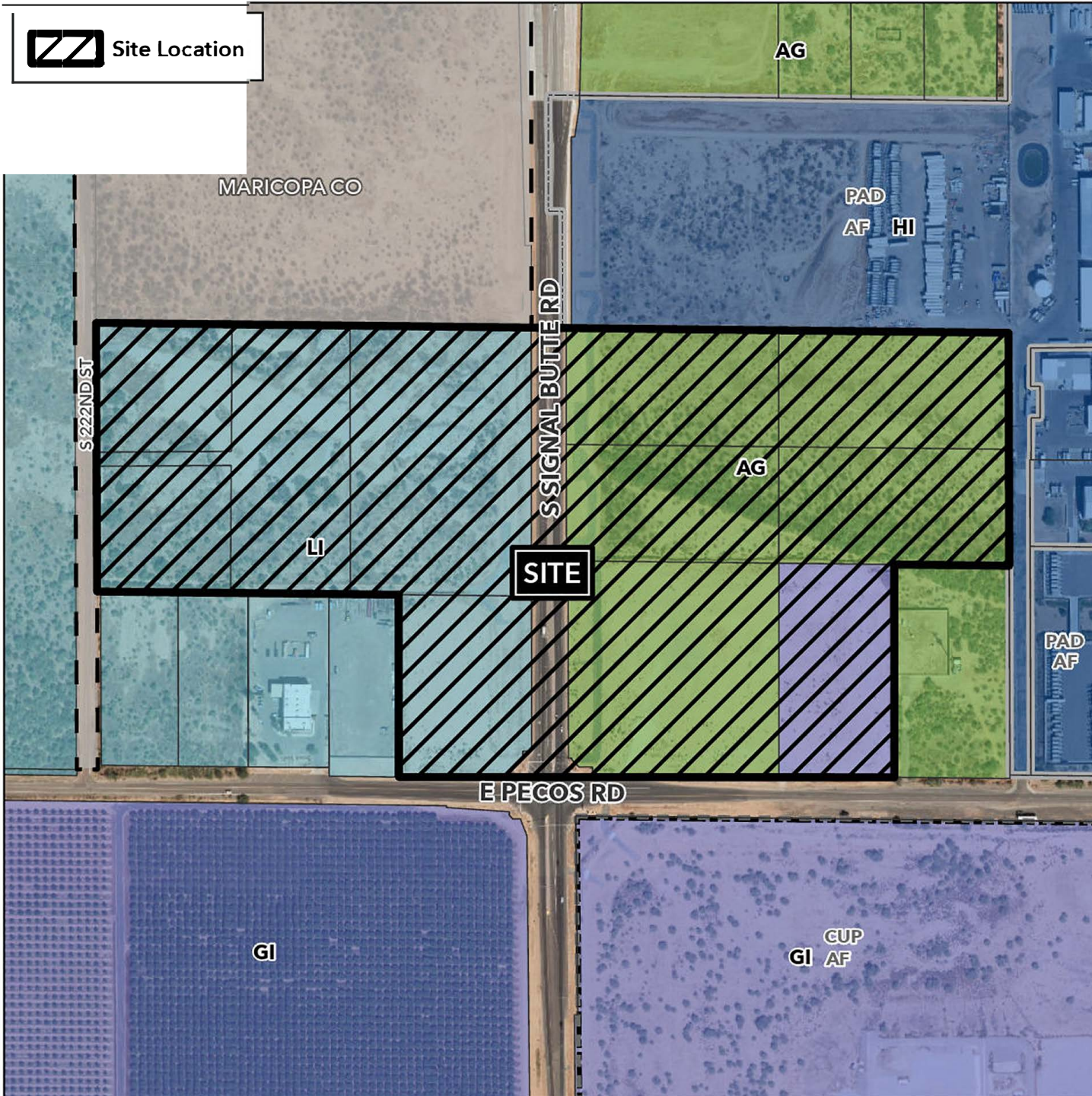


 Site Location



Case:

ZON24-00164

Site / Address:

(District 6). Within the 10700 to 11000 blocks of East Pecos Road (north side), and within the 6600 to 6800 blocks of South Signal Butte Road (both sides), and within the 6500 to 6800 blocks of South 222nd Street (east side). Located on the east and west side of South Signal Butte, on the north side of East Pecos Road. (62± acres).

Request:

Minor General Plan Amendment. This request will change the General Plan Character Area Type from Employment to Mixed Use Activity with a Regional Sub-type.

