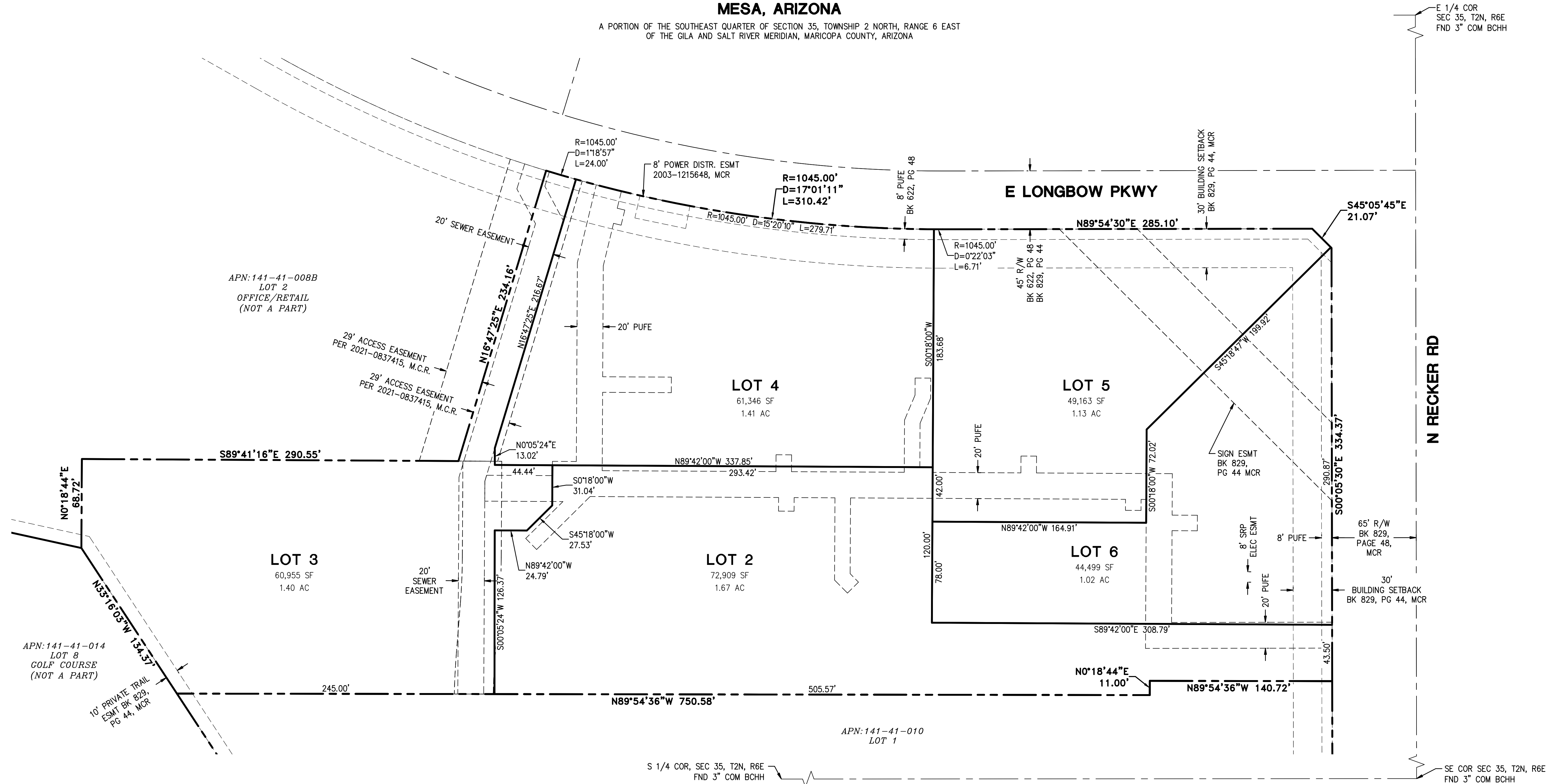


PRELIMINARY PLAT

DHI LONGBOW - LOTS 2-6

5937 E LONGBOW PARKWAY MESA, ARIZONA

A PORTION OF THE SOUTHEAST QUARTER OF SECTION 35, TOWNSHIP 2 NORTH, RANGE 6 EAST
OF THE GILA AND SALT RIVER MERIDIAN, MARICOPA COUNTY, ARIZONA



FLOOD PLAIN DESIGNATION

THE SUBJECT PROPERTY LIES WITHIN SHADED ZONE "X" WITH A DEFINITION OF: 0.2-PERCENT-ANNUAL-CHANCE FLOODPLAIN, AREAS OF 1-PERCENT-ANNUAL-CHANCE (BASE FLOOD) SHEET FLOW FLOODING WITH AVERAGE DEPTHS OF LESS THAN 1 FOOT, AREAS OF BASE FLOOD STREAM FLOODING WITH A CONTRIBUTING DRAINAGE AREA OF LESS THAN 1 SQUARE MILE, OR AREAS PROTECTED FROM THE BASE FLOOD BY LEVEES. NO BFES OR DEPTHS ARE SHOWN IN THIS ZONE, AND INSURANCE PURCHASE IS NOT REQUIRED. DESIGNATION DETERMINED BY FEMA FLOOD ZONE MAP 04013C2280L, PANEL NUMBER 2280 OF 4425, EFFECTIVE DATE OCTOBER 6, 2013.

BENCHMARK

BENCHMARK IS A FOUND CONCRETE NAIL WITH BRASS TAG IN THE TOP OF CURB ON THE SOUTHWEST CORNER OF RECKER ROAD & THOMAS ROAD.

ELEVATION: 1447.17'
DATUM: CITY OF MESA NAVD88

PLAN ELEVATIONS HAVE BEEN TRUNCATED 1400'.

BASIS OF BEARING

BASIS OF BEARING IS N00°05'30"W ALONG THE EAST LINE OF THE SOUTHEAST QUARTER OF SECTION 35, TOWNSHIP 2 NORTH, RANGE 6 EAST OF THE GILA AND SALT RIVER MERIDIAN, MARICOPA COUNTY, ARIZONA, BETWEEN THE MONUMENTS AS SHOWN HEREON.

LEGAL DESCRIPTION

THE LAND REFERRED TO HEREIN BELOW IS SITUATED IN THE COUNTY OF MARICOPA, STATE OF ARIZONA, AND IS DESCRIBED AS FOLLOWS:

LOT 4, OF LONGBOW BUSINESS PARK AND GOLF CLUB, ACCORDING TO THE PLAT OF RECORD IN THE OFFICE OF THE COUNTY RECORDER OF MARICOPA COUNTY, ARIZONA IN BOOK 829 OF MAPS, PAGE 44, THEREAFTER PLAT RATIFICATION RECORDED JULY 06, 2006 AS 2006-0905661 OF OFFICIAL RECORDS AND PLAT CORRECTION RECORDED JULY 06, 2006 AS 2006-0905662 OF OFFICIAL RECORDS.

AREA

LOT	AREA (SF)	AREA (AC)
2	72,909	1.67
3	60,955	1.40
4	61,346	1.41
5	49,163	1.13
6	44,499	1.02
TOTAL	288,872	6.63

OWNER/DEVELOPER

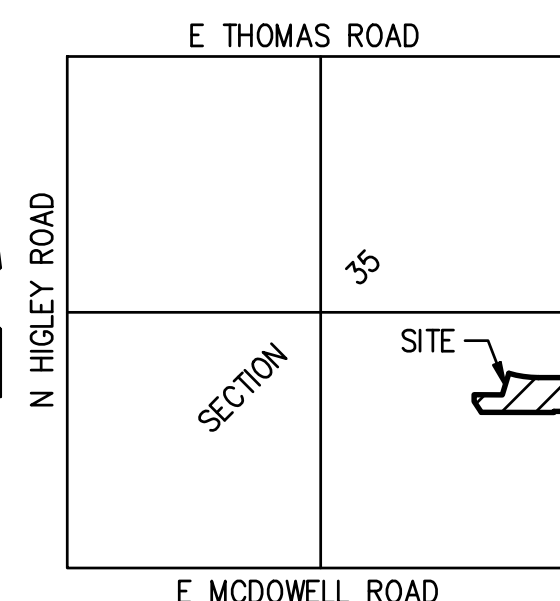
DHI COMMUNITIES
1341 HORTON CIRCLE
ARLINGTON, TEXAS 76011
PHONE: (817) 390-8212
CONTACT: CHRIS SACKS

ARCHITECT

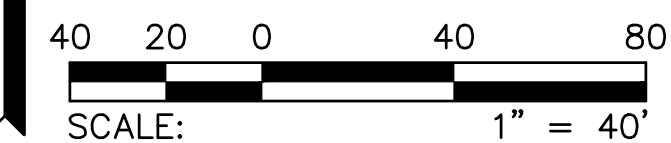
SPS+ ARCHITECTS, LLP
8681 EAST VIA DE NEGOCIO
SCOTTSDALE, AZ 85258
PHONE: (480) 991-0800
CONTACT: BRENT HEATON

ENGINEER

HILGARTWILSON, LLC
2141 E. HIGHLAND AVE. SUITE 250
PHOENIX, ARIZONA 85016
PHONE: (602) 490-0535
CONTACT: CASEY WHITEMAN



VICINITY MAP
NTS



REV:

HILGARTWILSON
HAS JOINED COLLIER'S ENGINEERING & DESIGN
2141 E. HIGHLAND AVE., STE. 250 | P: 602.490.0535 / F: 602.368.2436
PHOENIX, AZ 85016
www.hilgartwilson.com



DHI LONGBOW - LOTS 2-6

5937 E LONGBOW PARKWAY
MESA, ARIZONA 85215

PRELIMINARY PLAT

HILGARTWILSON	PROJ NO.: 2350
	DATE: 9/21/23
	SCALE: AS NOTED
	DRAWN: HW
	DESIGNED: JW
	APPROVED: CW

DWG. NO.
PPLAT

SHT. 1 OF 1