

Library Services

April 24, 2025

Library Director, Polly Bonnett
Management Assistant II, Tony Garvey

Fiscal Year 2025/26

Mesa Public Library supports lifelong learning, empowers individuals, and strengthens the community.



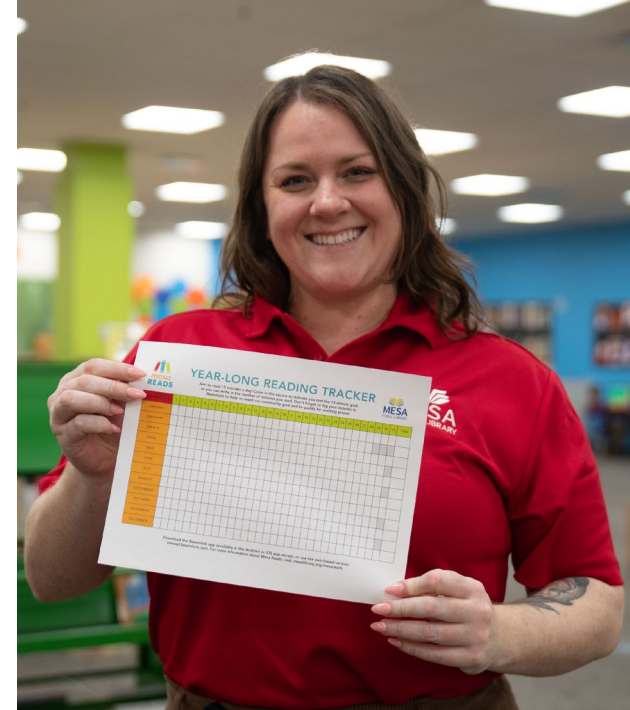
MPL Priorities/Objectives



2023 – 2026 Strategic Plan Priorities

Customer Experience
Community Literacy
Engagement and Access
Staff Support





Jan 1, 2025 – Dec 31, 2025



Gateway Library Beam Signing

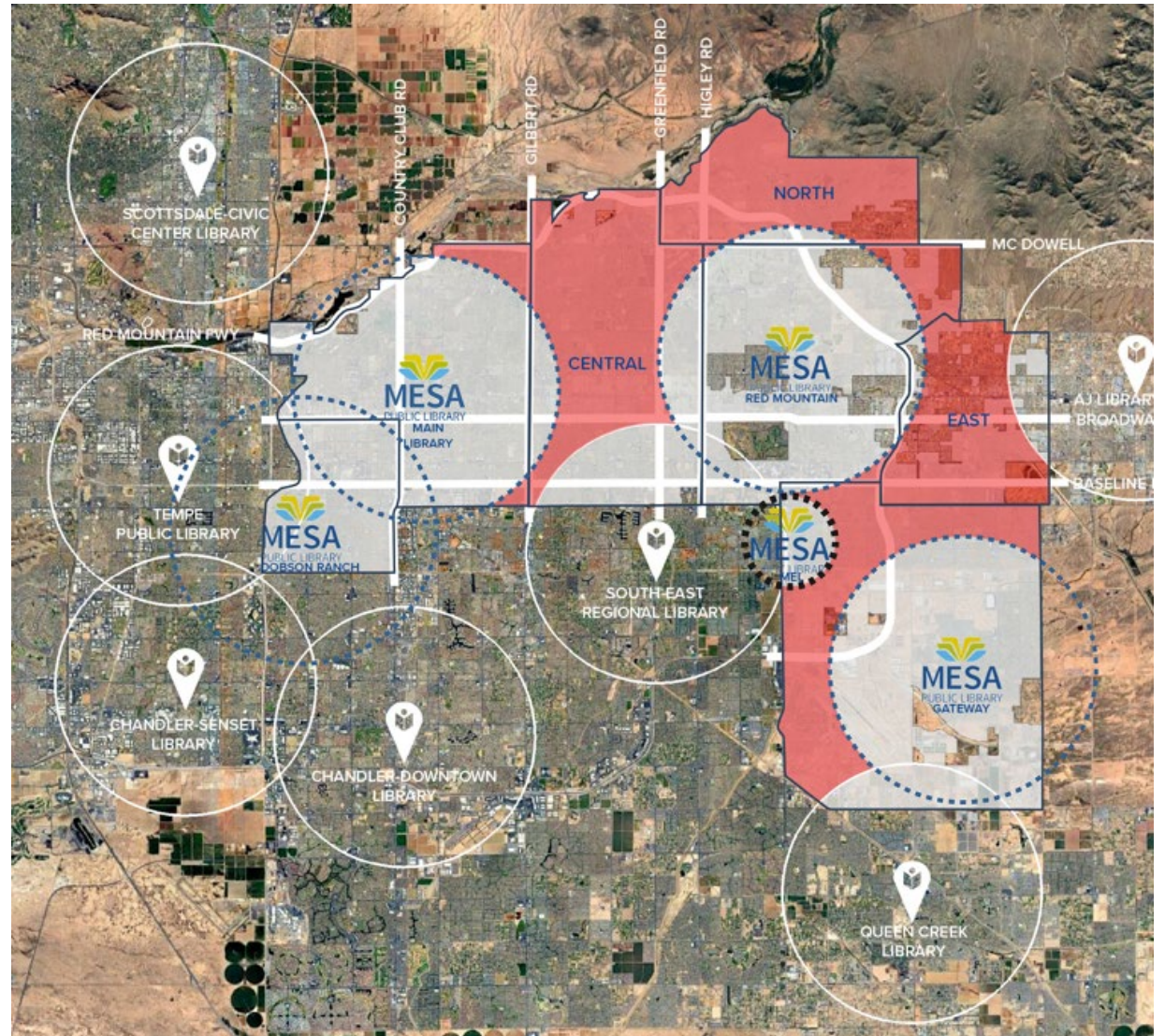


Read Runner



Master Planning

-Completion May 2025-





MPL Goes National

Engagement and Access - New Library Users



Objective: Continue and Increase Community Engagement with Library Services



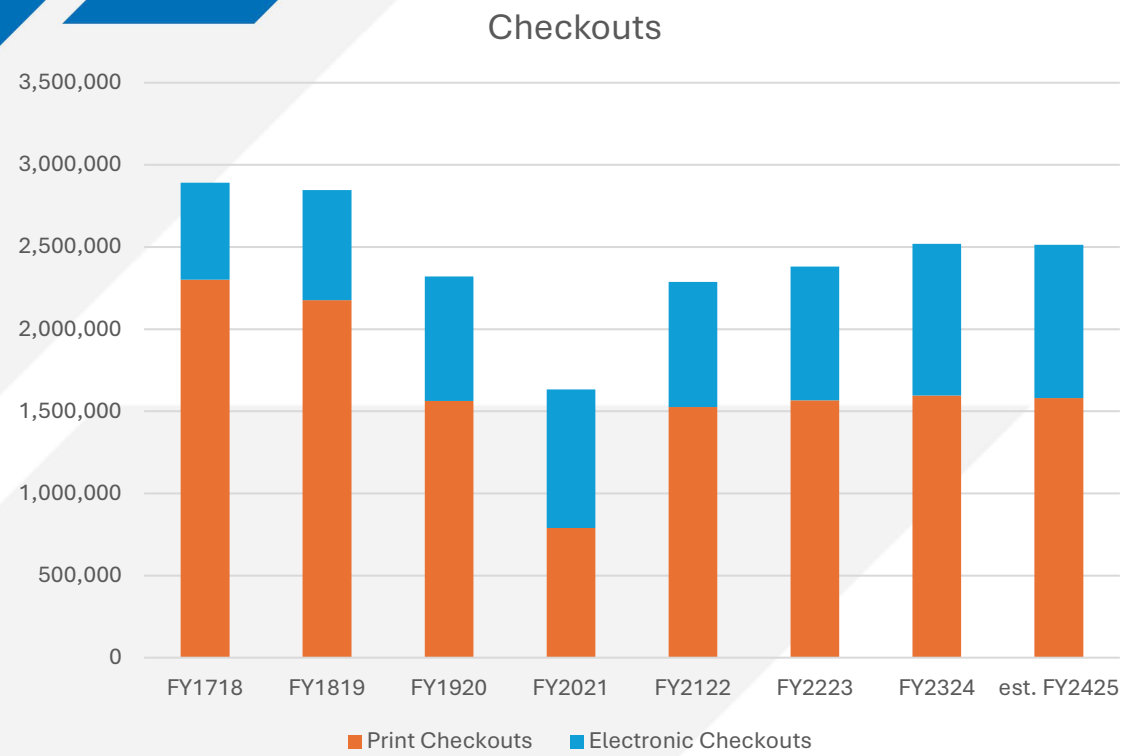
Library Cards Issued



Over 33,000 New Card Holders Projected in FY24/25



Community Literacy for All Learners - Book Checkouts



Objective: Provide programs, resources, and tools to build literacy skills in its many forms, for all ages

Over 2.5 Million Checkouts
Projected in FY24/25

Skilled & Talented Workforce

Neighborhoods & Placemaking

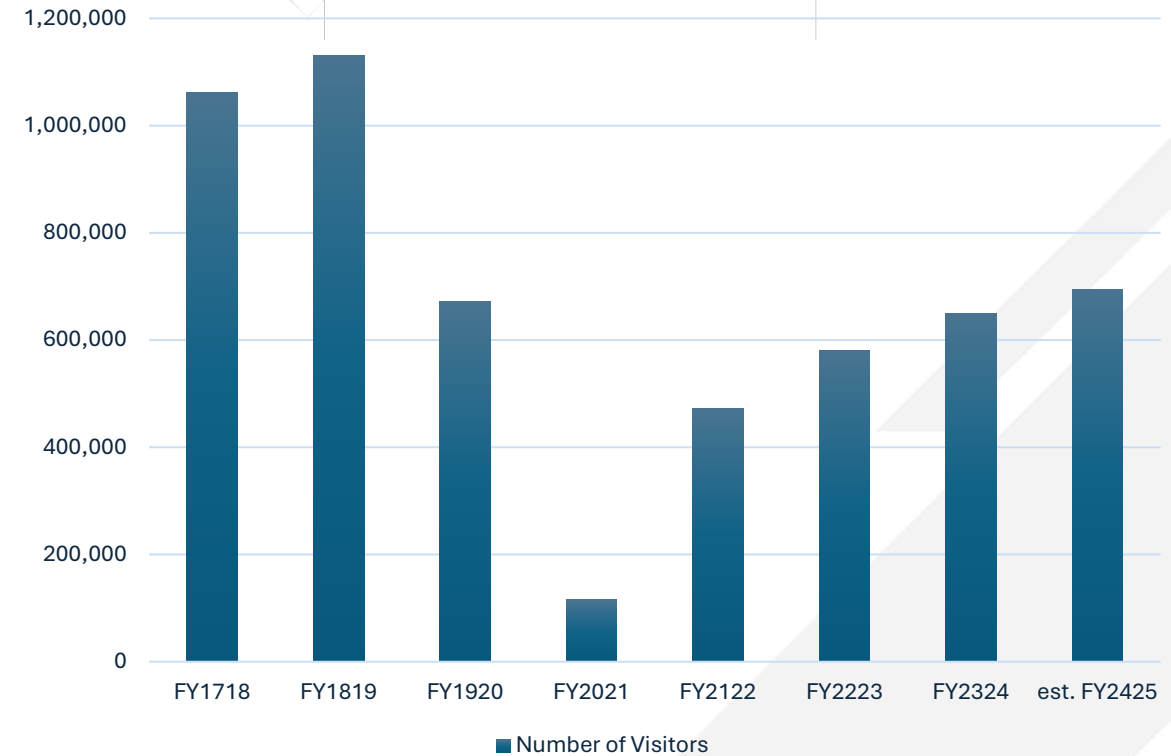
Strong Community Connections

Customer Experience - Library Visitors



Objective: Assess buildings to ensure safe and inclusive spaces

Library Visitors



Over 690k Visitors
Projected in FY24/25



Skilled & Talented
Workforce



Neighborhoods &
Placemaking

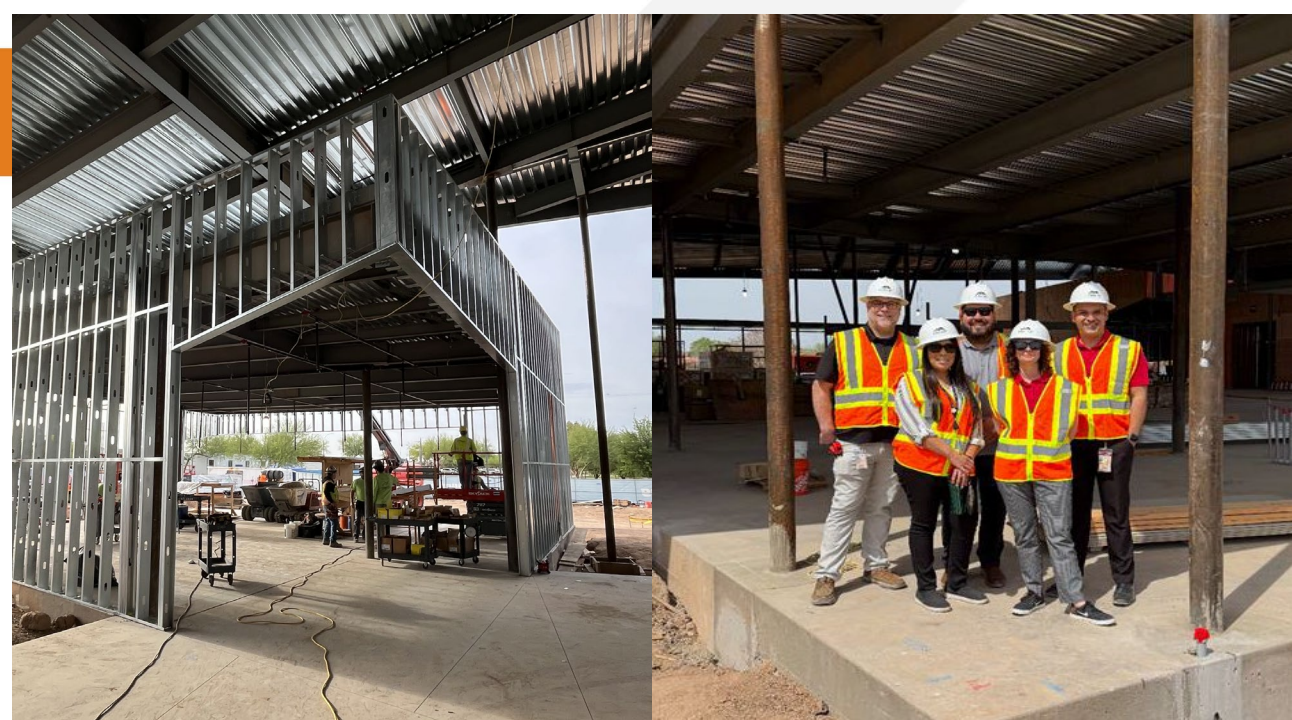


Strong Community
Connections

Gateway Library

Upcoming Milestones

- Jan – June 2025: Gateway staff hiring
- April – Aug 2025: Gateway Staff attends Community Outreach events
- July/Aug 2025: Construction completion
- Aug/Sept 2025: Branch staff and furniture move into Gateway Library
- Fall 2025: Grand Opening Celebration



Department Financial Summary



Core Business Process	FY 23/24 Year End Actuals	FY 24/25 Revised Budget	FY 24/25 Year End Estimate	FY 25/26 Proposed Budget
Library Resources	\$3.0	\$5.1	\$4.0	\$4.7
Library Programs and Services	\$5.8	\$9.9	\$6.5	\$9.6
Total	\$8.8	\$15.0	\$10.6	\$14.3

*Figures in millions,
rounded*

Base Budget Reductions

Reduction	FTE	Reduction Amount
Security Budget Overage – RM and GW	0	-\$10,400
Gateway Library Supplies and Equipment	0	-\$9,000
Google Ad Grant	0	-\$9,000
“Press Reader” Subscription	0	-\$26,000
VR Headset Licensing	0	-\$6,000
Dobson Ranch Library Page	-.5	-\$16,920
Red Mountain Library Page	-.5	-\$16,920
Total	-1	-\$94,240

Summer Reading 2025



COLOR  OUR WORLD.

Your Library's Summer Reading Program

June 1 – August 1, 2025

For Kids, Teens, and Adults!



COLOREA  NUESTRO MUNDO.

El Programa de Lectura de Verano de Su Biblioteca

1ro de Junio al 1ro de Agosto, 2025

¡Para niños, adolescentes y adultos!





mesa·az



THANK YOU!

MPL Budget Breakdown

Total Base Budget	\$11,249,649	%
Personnel Budget	\$8,528,568	75.8%
Operational Budget	\$2,721,081	24.2%

