



Design Review Board



DRB24-00860

McDonald's – Power and Elliot

Noah Bulson, Planning Technician

December 10, 2024



Request

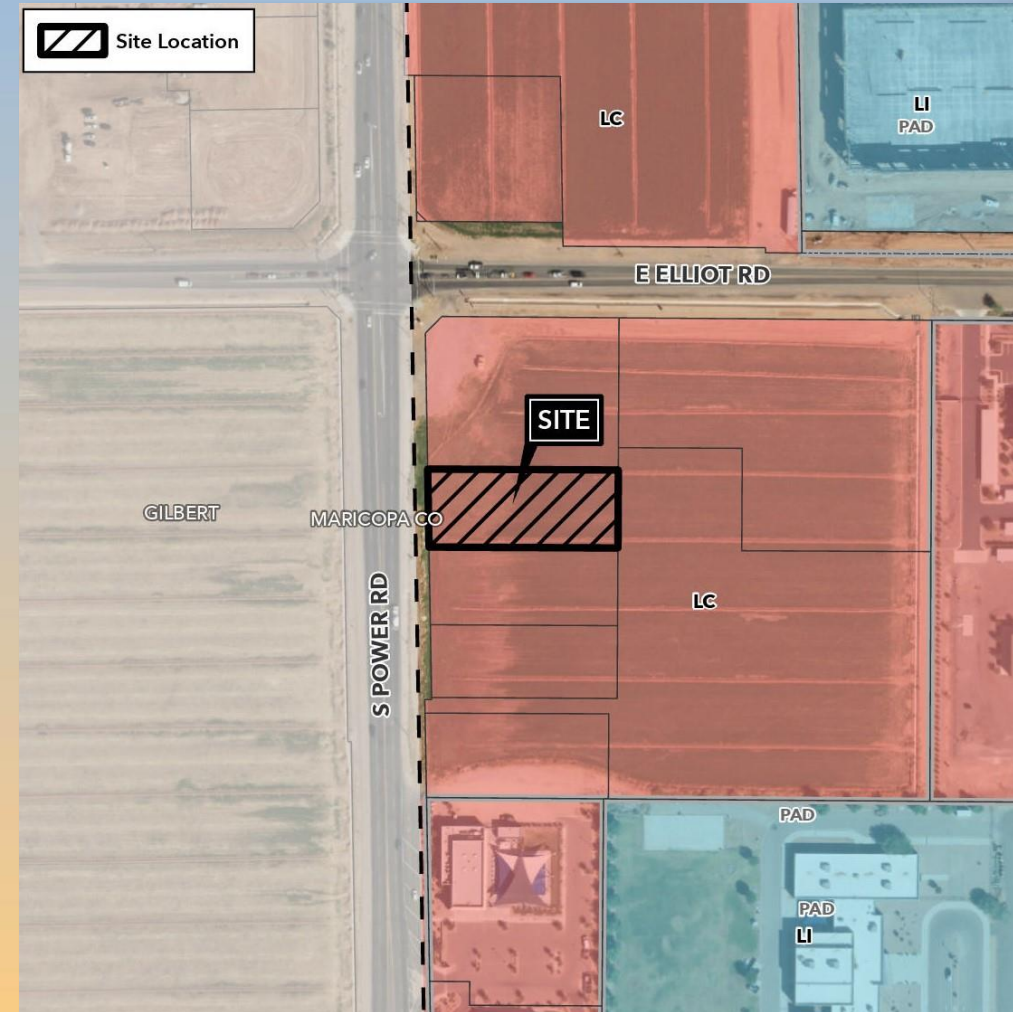
- Design Review
- For a Limited-Service Restaurant with Drive-Thru facilities





Location

- South of Elliot Road
- East of Power Road





Site Photo

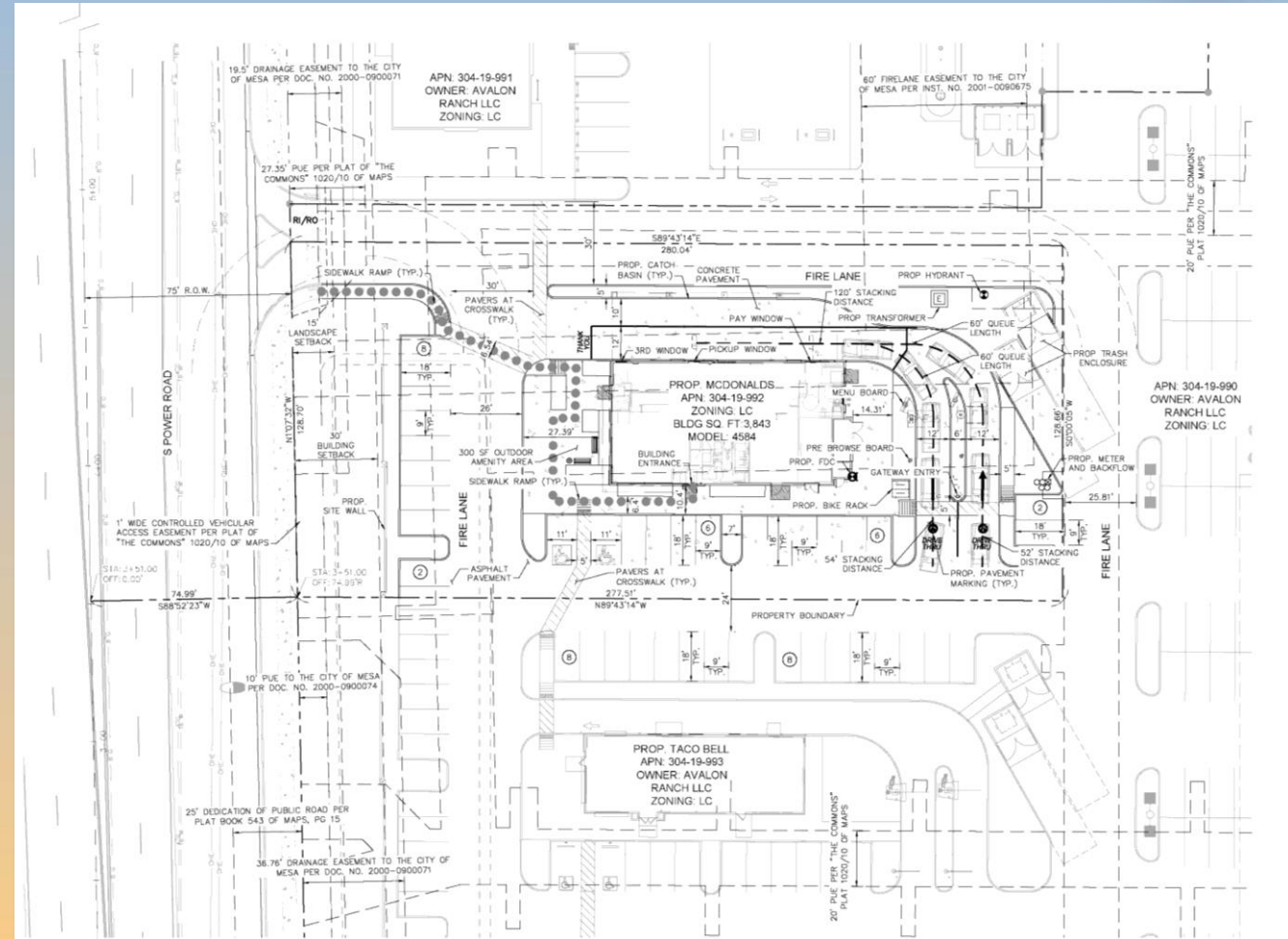


Looking east from Power Road



Site Plan

- 3,843 sq. ft. building
- 300 sq. ft. amenity area
- 38 parking spaces





Elevations





Elevations



ALL ROOFTOP EQUIPMENT SHALL BE FULLY SCREENED BY PARAPET WALL.





Color and Material Board

COLOR / MATERIAL LEGEND



STUCCO
SHERWIN WILLIAMS
COLOR: SW 7504 "KEYSTONE GRAY"
TO MATCH ALDI



CMU WAINSCOT:
SPEC BRICK "GARDNER BLEND"
TO MATCH ALDI



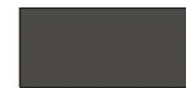
ALUMINUM COMPOSITE PANELS
OMEGA-LITE BY LAMINATORS, INC.
COLOR: BRIGHT SILVER
TO MATCH ALDI



NICHIHA FIBER CEMENT
EXTERIOR SIDING
COLOR: VINTAGEWOOD — BARK
TO MATCH ALDI



CMU TRIM
DUNN EDWARDS
DE 6213 "FINE GRAIN"



PREFINISHED METAL FASCIA
COLOR: RAL 7022



CANOPY/ ALPOLIC METAL PANEL
COLOR: SW IRON ORE (SW 7069)



ALUMINUM CANOPY
COLOR: WHITE



McD SIGN /UNDERSCORE
COLOR: GOLD



ALUMINUM DOOR/ WINDOW FRAME
COLOR: DARK BRONZE



Rendering





Findings

Staff is seeking your review and recommendation on the following:

- ✓ Proposed building elevations and landscape plan

Staff welcomes any feedback



Design Review Board