

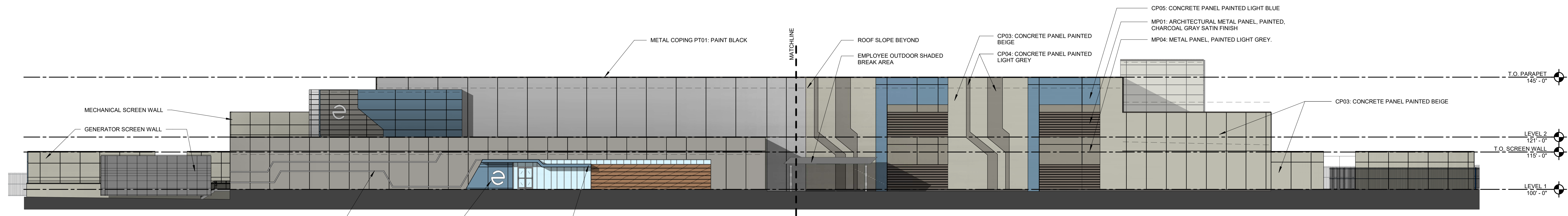
**OWNER**  
 EDGED  
 30 OLD KINGS HIGHWAY SOUTH, SUITE 1005  
 DARIEN, CT 06820

**ARCHITECT**  
 HKS, INC.  
 350 N SAINT PAUL ST, SUITE 100  
 DALLAS, TX 75201-4240

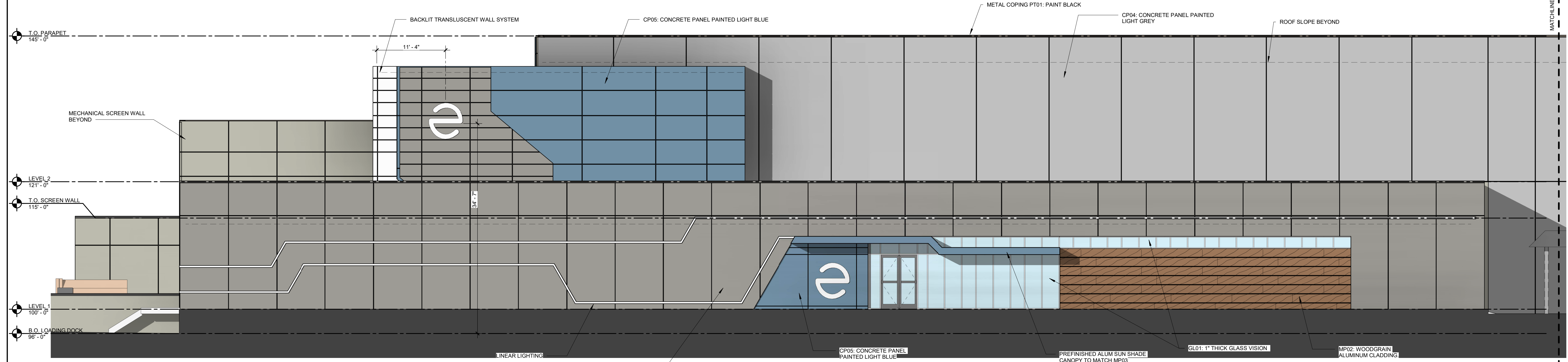
**STRUCTURE**  
 HKS, INC.  
 350 N SAINT PAUL ST, SUITE 100  
 DALLAS, TX 75201-4240

**MEP/FP**  
 TELIOS CORPORATION  
 146 PAYNE STREET  
 DALLAS, TX 75207

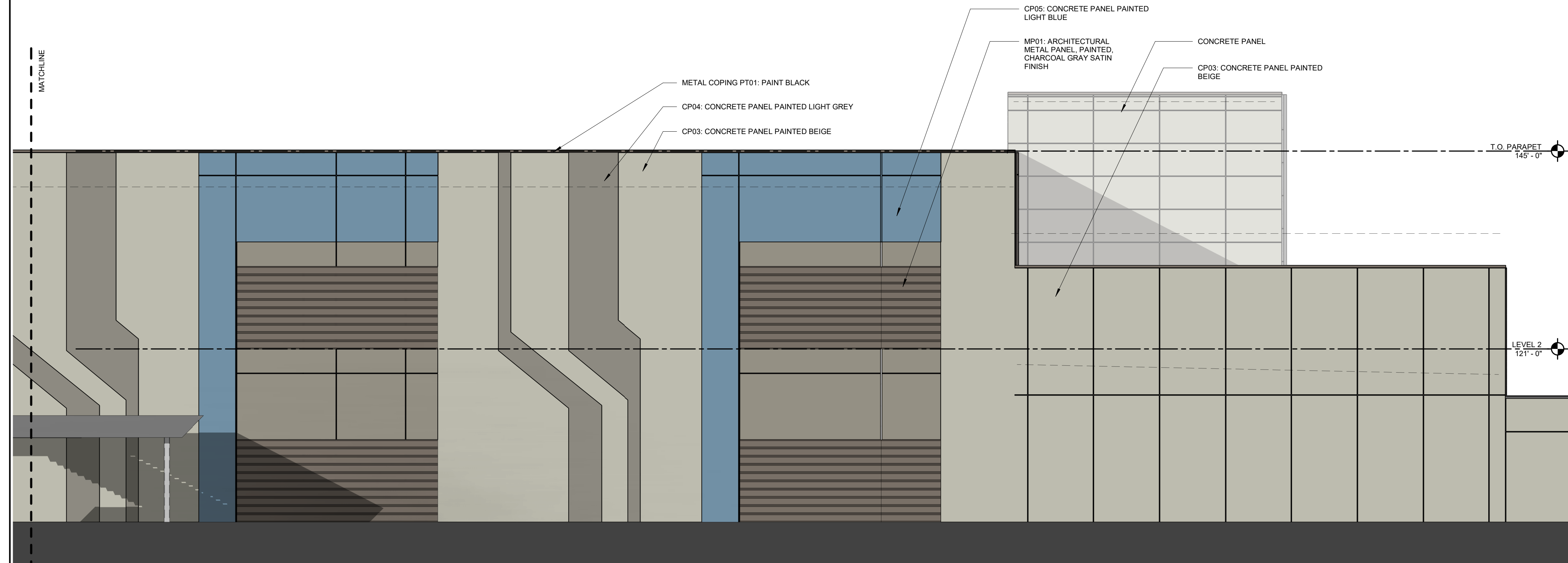
**CIVIL ENGINEER**  
 HILGART WILSON  
 2141 E. HIGHLAND AVE. STE. 275  
 PHOENIX, AZ 85016



**03 BUILDING ELEVATION - SOUTH**  
 1" = 20'-0"



**02 ENLARGED BUILDING ELEVATION - SOUTH**  
 1/8" = 1'-0"



**01 ENLARGED BUILDING ELEVATION - SOUTH**  
 1/8" = 1'-0"

## MATERIAL SPECIFICATIONS

<p><b>CP01</b></p> <p>a. MATERIAL TYPE: CONCRETE PANEL                  b. FINISH TYPE: PAINTED                  c. COLOR COATING: WHITE                  d. SATIN FINISH                  e. LOCATION: EXTERIOR WALLS</p>	<p><b>CP05</b></p> <p>a. MATERIAL TYPE: CONCRETE PANEL                  b. FINISH TYPE: PAINTED                  c. COLOR COATING: LIGHT BLUE                  d. SATIN FINISH                  e. LOCATION: EXTERIOR WALLS</p>	<p><b>MP04</b></p> <p>a. MATERIAL TYPE: ALUM. COMPOSITE PANEL                  b. FINISH TYPE: PREFINISHED, MATTE                  c. COLOR: LIGHT GREY (PER MANUFACTURER STANDARD SELECTION)</p>
<p><b>CP02</b></p> <p>a. MATERIAL TYPE: CONCRETE PANEL                  b. FINISH TYPE: PAINTED                  c. COLOR COATING: DARK GREY                  d. SATIN FINISH                  e. LOCATION: EXTERIOR WALLS</p>	<p><b>MP01</b></p> <p>a. MATERIAL TYPE: ARCHITECTURAL METAL PANEL                  b. FINISH TYPE: PAINTED                  c. COLOR COATING: CHARCOAL GRAY                  d. SATIN FINISH                  e. LOCATION: EXTERIOR METAL PANELS</p>	<p><b>GL01</b></p> <p>a. MATERIAL TYPE: INSULATED COATED GLASS VISION                  b. OVERALL THICKNESS: 1" IN NOMINAL                  c. AIR SPACE: 1/2"; ALUMINUM BLACK ARGON                  d. INBOARD LINTEL CLEAR HS: 1/4" THICK GLASS                  e. BASIS OF DESIGN 1" INSULATED LOW-E GLASS</p>
<p><b>CP03</b></p> <p>a. MATERIAL TYPE: CONCRETE PANEL                  b. FINISH TYPE: PAINTED                  c. COLOR COATING: BEIGE                  d. SATIN FINISH                  e. LOCATION: EXTERIOR WALLS</p>	<p><b>MP02</b></p> <p>a. MATERIAL TYPE: ALUM. COMPOSITE PANEL                  b. FINISH TYPE: PRINTED WOODGRAIN                  c. COLOR: DOUGLAS FIR                  d. LOCATION: OFFICE ENTRY</p>	<p><b>PT01</b></p> <p>a. MATERIAL TYPE: PAINT                  b. COLOR: BLACK                  c. FINISH: SEMI-GLOSS                  d. LOCATION: RAILINGS, TRIM, GATES, FENCE EXT HARDWARE</p>
<p><b>CP04</b></p> <p>a. MATERIAL TYPE: CONCRETE PANEL                  b. FINISH TYPE: PAINTED                  c. COLOR COATING: LIGHT GREY                  d. SATIN FINISH                  e. LOCATION: EXTERIOR WALLS</p>	<p><b>MP03</b></p> <p>a. MATERIAL TYPE: ALUM. COMPOSITE PANEL                  b. FINISH TYPE: PREFINISHED, MATTE                  c. COLOR: LIGHT BLUE (PER MANUFACTURER STANDARD SELECTION)</p>	<p><b>LLR01</b></p> <p>a. MATERIAL TYPE: 2" WIDE ALUM. REVEAL WITH INTEGRATED LED LIGHTING                  b. FINISH TYPE: ANODIZED                  c. COLOR COATING: CHARCOAL GRAY                  d. MATTE FINISH</p>

**INTERIM REVIEW ONLY**

These documents are incomplete, and are released for interim review only and are not intended for regulatory approval, permit, or construction purposes.

Architect: \_\_\_\_\_  
 Arch. Reg. No.: \_\_\_\_\_  
 Date: \_\_\_\_\_

REVISION

NO.	DESCRIPTION	DATE

HKS PROJECT NUMBER  
**26033.000**

DATE  
**09/25/2023**

ISSUE  
**DESIGN REVIEW**

SHEET TITLE  
**BUILDING ELEVATIONS**

SHEET NO.  
**SP.5**





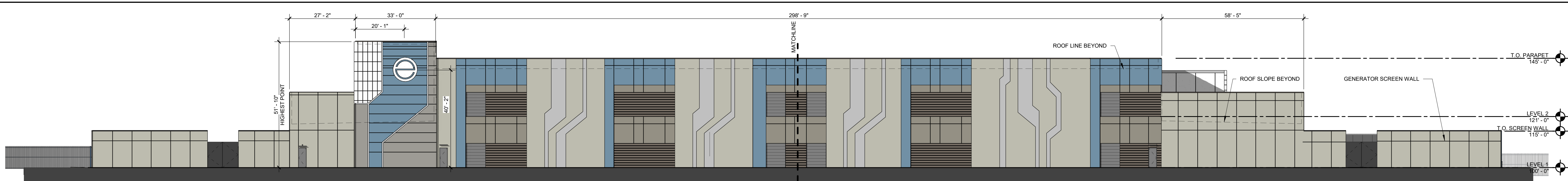
**OWNER**  
 EDGED  
 30 OLD KINGS HIGHWAY SOUTH, SUITE 1005  
 DARIEN, CT 06820

**ARCHITECT**  
 HKS, INC.  
 350 N SAINT PAUL ST, SUITE 100  
 DALLAS, TX 75201-4240

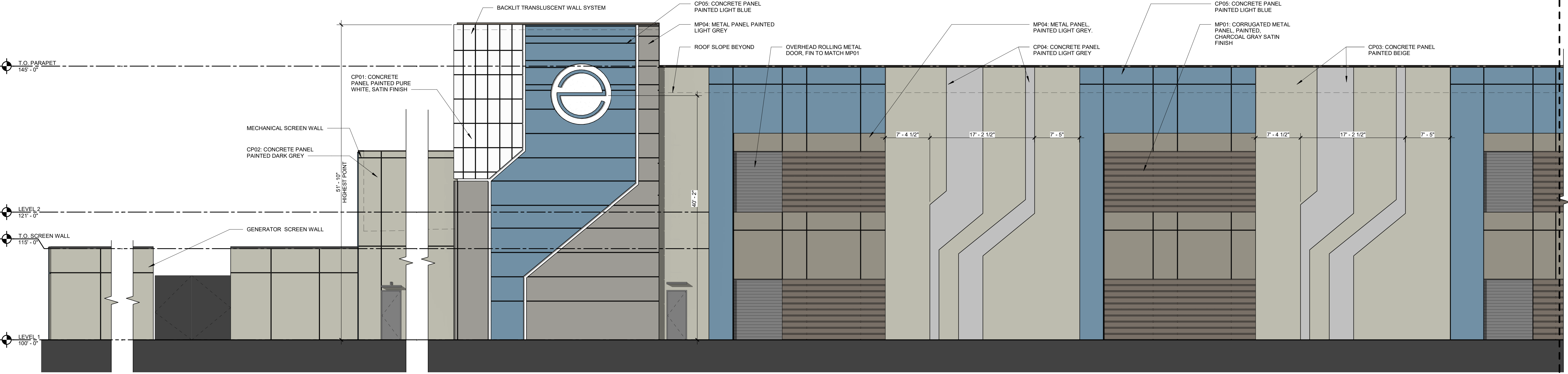
**STRUCTURE**  
 HKS, INC.  
 350 N SAINT PAUL ST, SUITE 100  
 DALLAS, TX 75201-4240

**MEP/FP**  
 TELIOS CORPORATION  
 146 PAYNE STREET  
 DALLAS, TX 75207

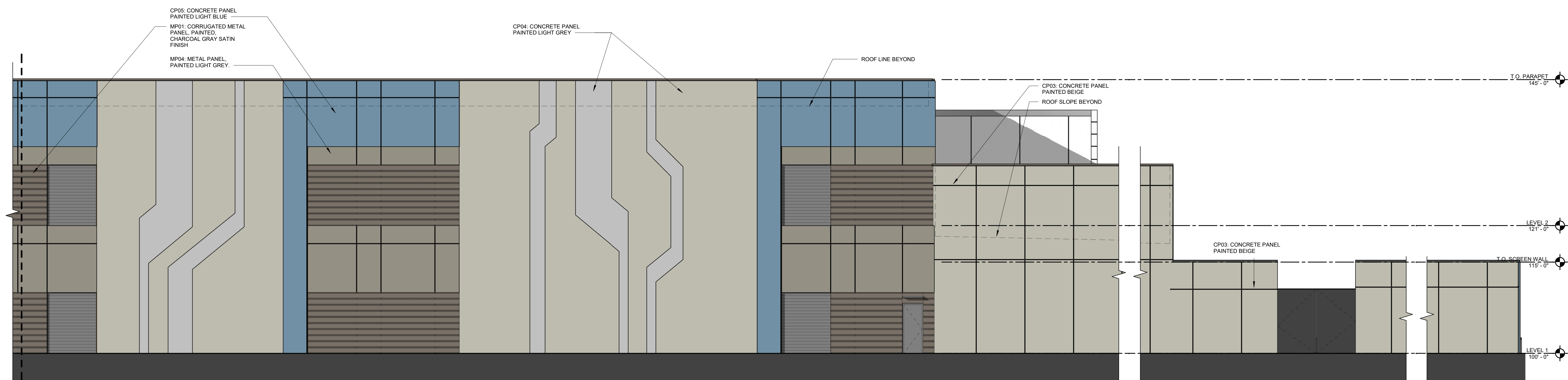
**CIVIL ENGINEER**  
 HILGART WILSON  
 2141 E. HIGHLAND AVE. STE. 275  
 PHOENIX, AZ 85016



**03 BUILDING ELEVATION - NORTH**  
 1" = 20'-0"



**02 ENLARGED BUILDING ELEVATION - NORTH**  
 1/8" = 1'-0"



**01 ENLARGED BUILDING ELEVATION - NORTH**  
 1/8" = 1'-0"

**INTERIM REVIEW ONLY**

These documents are incomplete, and are released for interim review only and are not intended for regulatory approval, permit, or construction purposes.

Architect: \_\_\_\_\_  
 Arch. Reg. No.: \_\_\_\_\_  
 Date: \_\_\_\_\_

**REVISION**

NO.	DESCRIPTION	DATE

HKS PROJECT NUMBER  
**26033.000**  
 DATE  
**09/25/2023**  
 ISSUE  
**DESIGN REVIEW**

SHEET TITLE  
**BUILDING ELEVATIONS**

SHEET NO.  
**SP.8**

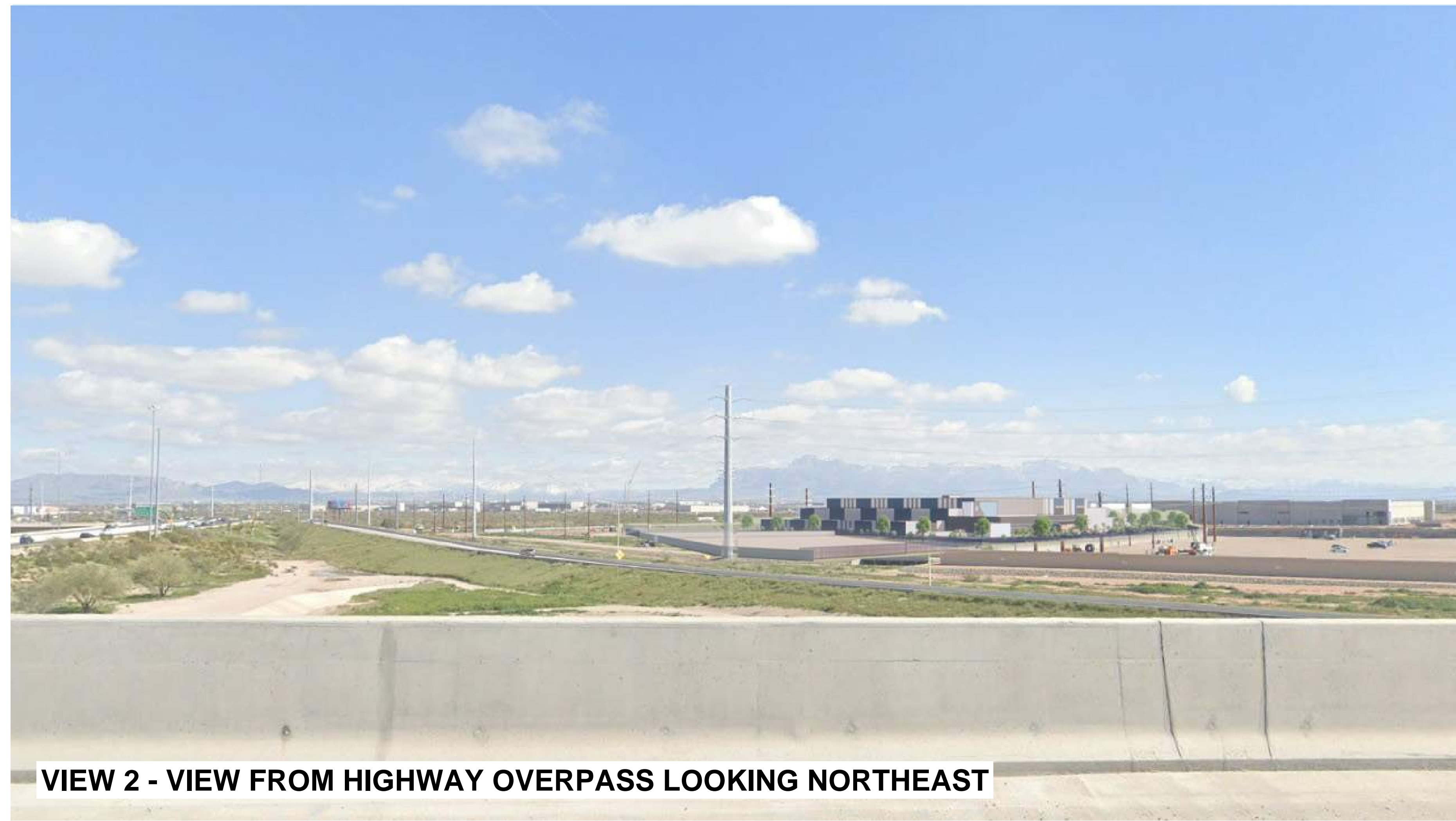
**OWNER**  
 EDGED  
 30 OLD KINGS HIGHWAY SOUTH, SUITE 1005  
 DARIEN, CT 06820

**ARCHITECT**  
 HKS, INC.  
 350 N SAINT PAUL ST, SUITE 100  
 DALLAS, TX 75201-4240

**STRUCTURE**  
 HKS, INC.  
 350 N SAINT PAUL ST, SUITE 100  
 DALLAS, TX 75201-4240

**MEP/FP**  
 TELIOS CORPORATION  
 146 PAYNE STREET  
 DALLAS, TX 75207

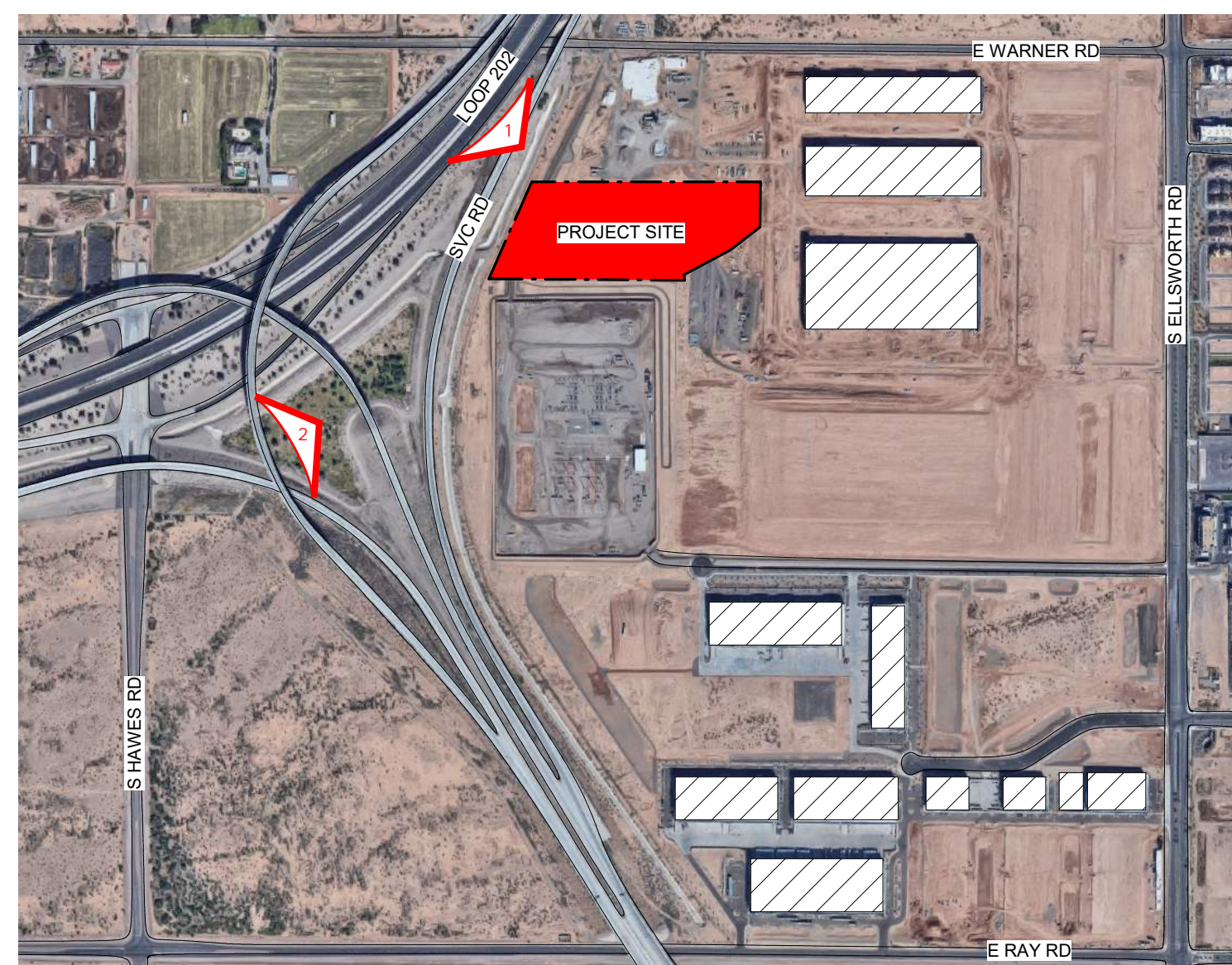
**CIVIL ENGINEER**  
 HILGART WILSON  
 2141 E. HIGHLAND AVE. STE. 275  
 PHOENIX, AZ 85016



**VIEW 2 - VIEW FROM HIGHWAY OVERPASS LOOKING NORTHEAST**



**VIEW 1 - VIEW FROM HIGHWAY 202**



**INTERIM REVIEW ONLY**

These documents are incomplete, and are released for interim review only and are not intended for regulatory approval, permit, or construction purposes.

Architect: \_\_\_\_\_  
 Arch. Reg. No.: \_\_\_\_\_  
 Date: \_\_\_\_\_

**REVISION**

NO.	DESCRIPTION	DATE

HKS PROJECT NUMBER  
**26033.000**  
 DATE  
**09/25/2023**  
 ISSUE  
**DESIGN REVIEW**

SHEET TITLE  
**PERSPECTIVE - STREET VIEWS**

SHEET NO.  
**SP.16**