

EXHIBIT C LEGAL DESCRIPTION PUFE ABANDONMENT

A PORTION OF THE PUFE RECORDED IN BOOK 342 OF MAPS, PAGE 24, RECORDS OF MARICOPA COUNTY, ARIZONA LOCATED IN THE NORTHWEST QUARTER OF SECTION 36, TOWNSHIP 1 NORTH, RANGE 6 EAST, OF THE GILA AND SALT RIVER MERIDIAN, MARICOPA COUNTY, ARIZONA MORE PARTICULARLY DESCRIBED AS FOLLOWS:

COMMENCING AT THE NORTHWEST CORNER OF SAID SECTION 36, FROM WHICH THE NORTH QUARTER CORNER OF SAID SECTION 36 BEARS NORTH 89°40'07" EAST, A DISTANCE OF 2640.56 FEET;

THENCE ALONG THE NORTH LINE OF SAID SECTION 36, NORTH 89°40'07" EAST, A DISTANCE OF 650.78 FEET;

THENCE LEAVING SAID NORTH LINE, SOUTH 00°19'41" EAST, A DISTANCE OF 636.36 FEET TO THE POINT OF BEGINNING;

THENCE NORTH 89°40'07" EAST, A DISTANCE OF 20.00 FEET;

THENCE SOUTH 00°19'53" EAST, A DISTANCE OF 318.80 FEET;

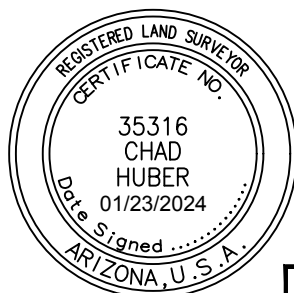
THENCE SOUTH 31°47'00" EAST, A DISTANCE OF 180.54 FEET;

THENCE SOUTH 89°40'07" WEST, A DISTANCE OF 23.44 FEET;

THENCE NORTH 31°47'00" WEST, A DISTANCE OF 173.80 FEET;

THENCE NORTH 00°19'53" WEST, A DISTANCE OF 324.56 FEET TO THE POINT OF BEGINNING.

SAID PARCEL CONTAINING 9,965 SQ. FT. OR 0.229 ACRES MORE OR LESS



CHAD W. HUBER
RLS 35316
7740 N. 16TH STREET, SUITE 300
PHOENIX, ARIZONA 85020
PH. 602-837-5511
chad.huber@kimley-horn.com

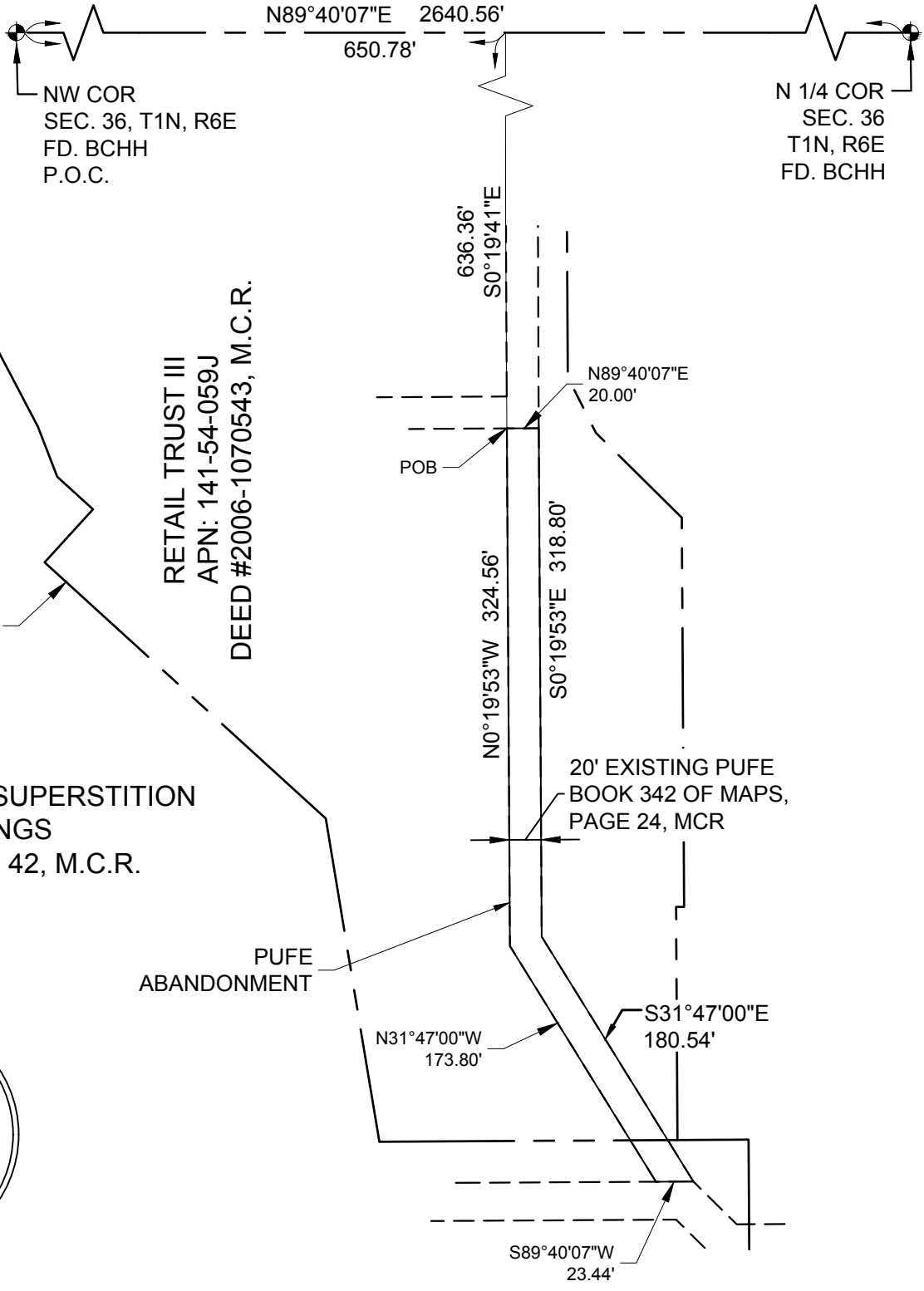
Kimley»Horn

7740 N. 16TH ST, Suite 300
PHOENIX, AZ 85020

Tel. No. (602) 837-5511

| Scale | Drawn by | Checked by | Date | Project No. | Sheet No. |
|-------|----------|------------|------------|-------------|-----------|
| N/A | CWH | CWH | 01/23/2024 | 091502440 | 1 OF 2 |

EXHIBIT C

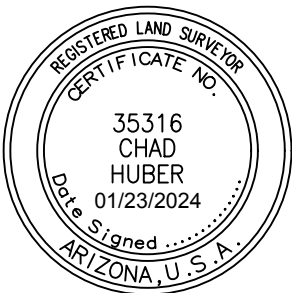


PARKLINKS AT SUPERSTITION
SPRINGS
BK. 407, PG. 42, M.C.R.

RETAIL TRUST III
APN: 141-54-059J
DEED #2006-1070543, M.C.R.

20' EXISTING PUFU
BOOK 342 OF MAPS,
PAGE 24, MCR

PUFU
ABANDONMENT



CHAD W. HUBER
RLS 35316
7740 N. 16TH STREET, SUITE 300
PHOENIX, ARIZONA 85020
PH. 602-837-5511
chad.huber@kimley-horn.com

Kimley»Horn

7740 N. 16TH ST, Suite 300
PHOENIX, AZ 85020

Tel. No. (602) 837-5511

| Scale | Drawn by | Checked by | Date | Project No. | Sheet No. |
|--------|----------|------------|------------|-------------|-----------|
| N.T.S. | CWH | CWH | 01/23/2024 | 091502440 | 2 OF 2 |