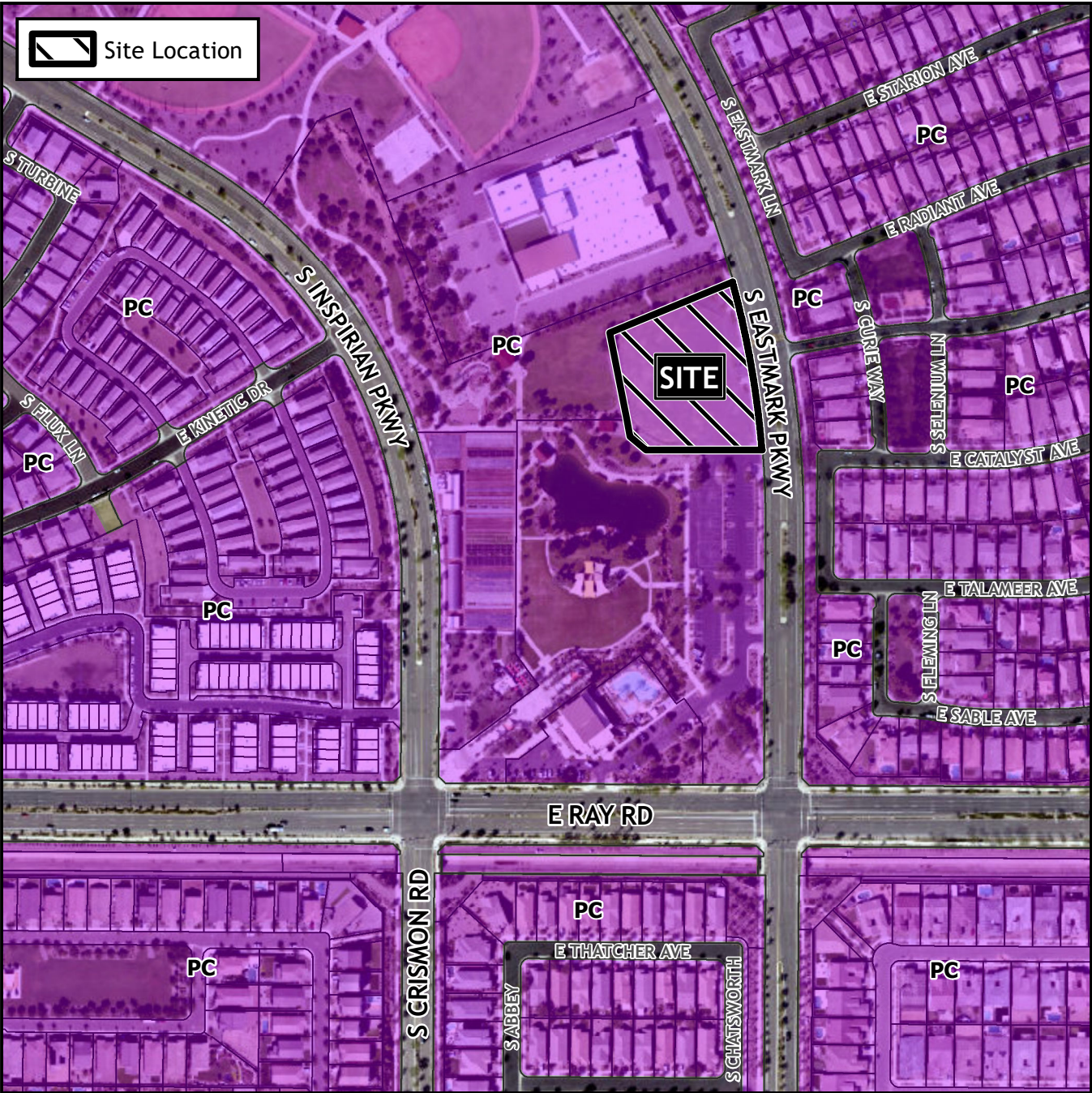


Design Review Vicinity Map: DRB22-01218



Case Details

Case:

DRB22-01218

Site / Address:

District 6. Within the 5000 to 5100 blocks of South Eastmark Parkway (west side). Located north of Ray Road and east of Crismon Road, on the west side of Eastmark Parkway. (7± acres).

Request:

Design Review for a public library



A horizontal number line with tick marks every 50 feet. The labels 0, 250, and 500 are placed above the tick marks. The word "Feet" is centered below the line.

