

RESOLUTION NO. 12087

A RESOLUTION OF THE CITY COUNCIL OF THE CITY OF MESA, MARICOPA COUNTY, ARIZONA, ABANDONING THROUGH EXTINGUISHMENT FIFTEEN (15) PUBLIC UTILITY AND FACILITIES EASEMENTS LOCATED AT 6935 SOUTH CRISMON ROAD.

WHEREAS, pursuant to Arizona Revised Statutes Title 28 §§ 7201-7215 and/or Mesa City Code Title 9, Chapter 10, the City Council has the authority to abandon, vacate or extinguish (collectively, hereafter, “abandon”) unnecessary roadway, right-of-way, or easements to which the City holds right or title to. Additionally, the City generally has the right to release restrictive covenants it holds on real property.

WHEREAS, the City Council has determined that fifteen (15) public utilities and facilities easements dedicated for temporary drainage basins on lots 1 through 5 of the Final Plat of the Cubes at Mesa Gateway, recorded in Book 1654 of Maps, Page 15, records of Maricopa County, Arizona, located at 6935 South Crismon Road, as hereafter described in **Exhibit A** (collectively, the “PUFEs”), are no longer needed.

WHEREAS Mesa City Code 9-10-2 permits the City Council to extinguish easements no longer needed by the City upon application and payment of the application fee.

NOW THEREFORE, BE IT RESOLVED BY THE CITY COUNCIL OF THE CITY OF MESA, MARICOPA COUNTY, ARIZONA, AS FOLLOWS:

Section 1: All rights of the City of Mesa in and to the PUFES are abandoned and deemed extinguished:

PLEASE REFER TO THE LEGAL DESCRIPTION AND DEPICTION ON **EXHIBIT A** ATTACHED HERETO AND MADE A PART HEREOF FOR THE EXTINGUISHED AREAS.

PASSED AND ADOPTED by the City Council of the City of Mesa, Maricopa County, Arizona, this 28th day of August, 2023.

APPROVED:

Mayor

ATTEST:

City Clerk

EXHIBIT "A"

LEGAL DESCRIPTION

THE CUBES @ MESA GATEWAY

ABANDONMENT OF PUBLIC UTILITY FACILITY EASEMENT # 1

ABANDONMENT OF A PUBLIC UTILITY FACILITY EASEMENT LOCATED ON LOT 5 IN THE FINAL PLAT OF THE CUBES AT MESA GATEWAY RECORDED IN BOOK 1654, PAGE 15, MARICOPA COUNTY RECORDS (MCR) AND LOCATED IN THE WEST HALF OF SECTION 2, TOWNSHIP 2 SOUTH, RANGE 7 EAST OF THE GILA AND SALT RIVER MERIDIAN, CITY OF MESA, MARICOPA COUNTY, ARIZONA, MORE PARTICULARLY DESCRIBED AS FOLLOWS:

COMMENCING AT THE SOUTHWEST CORNER OF SAID SECTION (MAG NAIL WITH TAG STAMPED LS 32222) FROM WHICH POINT THE WEST QUARTER CORNER (0.5" STEEL ROD) THEREOF BEARS N00°38'59"W, A DISTANCE OF 2643.39 FEET;

THENCE N00°38'59" W, ALONG THE WEST LINE OF THE SOUTHWEST QUARTER OF SAID SECTION, A DISTANCE OF 95.38 FEET;

THENCE N89°21'01"E, ACROSS THE PROPOSED RIGHT OF WAY, A DISTANCE OF 69.82 FEET TO THE POINT OF BEGINNING;

THENCE THE NEXT NINE (9) COURSES AND DISTANCES OVER SAID LOT:

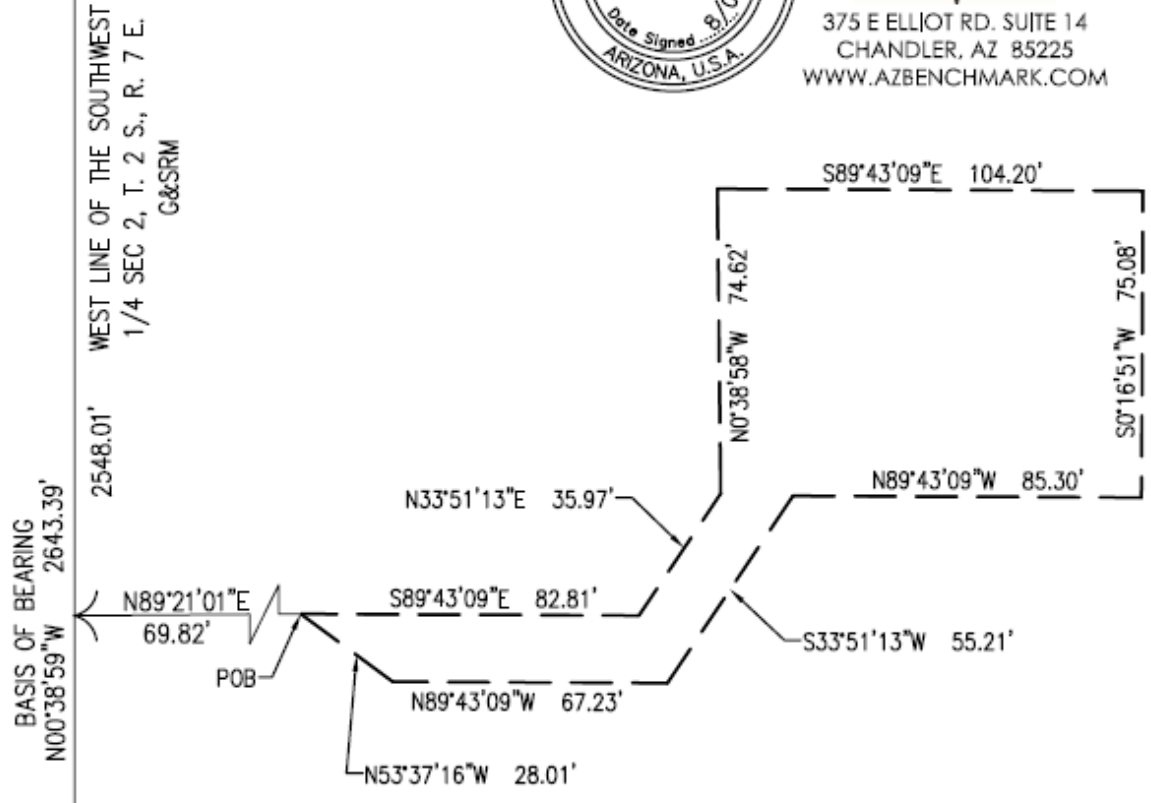
- 1) S89°43'09"E A DISTANCE OF 82.81 FEET.
- 2) N33°51'13"E A DISTANCE OF 35.97 FEET.
- 3) N00°38'58"W A DISTANCE OF 74.62 FEET.
- 4) S89°43'09"E A DISTANCE OF 104.20 FEET.
- 5) S00°16'51"W A DISTANCE OF 75.08 FEET.
- 6) N89°43'09"W A DISTANCE OF 85.30 FEET.
- 7) S33°51'13"W A DISTANCE OF 55.21 FEET.
- 8) N89°43'09"W A DISTANCE OF 67.23 FEET.
- 9) N53°37'16"W A DISTANCE OF 28.01 FEET TO THE POINT OF BEGINNING.



W 1/4 COR
 SEC 2 T2S, R7E
 FD 0.5" STEEL ROD




375 E ELLIOT RD. SUITE 14
 CHANDLER, AZ 85225
 WWW.AZBENCHMARK.COM



BASIS OF BEARING
 N00°38'59"W 2643.39'

WEST LINE OF THE SOUTHWEST
 1/4 SEC 2, T. 2 S., R. 7 E.
 G&SRM

2548.01'

95.38'

POC
 SW COR
 SEC 2 T2S, R7E
 FD MAG NAIL WITH TAG
 STAMPED LS 32222

SCALE:
 1"=40'
 SE 1/4
 SEC 2
 T. 2 S.
 R. 7 E.



EXHIBIT "A"

LEGAL DESCRIPTION

THE CUBES @ MESA GATEWAY

ABANDONMENT OF PUBLIC UTILITY FACILITY EASEMENT # 2

ABANDONMENT OF A PUBLIC UTILITY FACILITY EASEMENT LOCATED ON LOT 5 IN THE FINAL PLAT OF THE CUBES AT MESA GATEWAY RECORDED IN BOOK 1654, PAGE 15, MARICOPA COUNTY RECORDS (MCR) AND LOCATED IN THE WEST HALF OF SECTION 2, TOWNSHIP 2 SOUTH, RANGE 7 EAST OF THE GILA AND SALT RIVER MERIDIAN, CITY OF MESA, MARICOPA COUNTY, ARIZONA, MORE PARTICULARLY DESCRIBED AS FOLLOWS:

COMMENCING AT THE SOUTHWEST CORNER OF SAID SECTION (MAG NAIL WITH TAG STAMPED LS 32222) FROM WHICH POINT THE WEST QUARTER CORNER (0.5" STEEL ROD) THEREOF BEARS N00°38'59"W, A DISTANCE OF 2643.39 FEET;

THENCE N00°38'59" W, ALONG THE WEST LINE OF THE SOUTHWEST QUARTER OF SAID SECTION, A DISTANCE OF 380.04 FEET;

THENCE N89°21'01"E, ACROSS THE PROPOSED 65 FOOT RIGHT OF WAY, A DISTANCE OF 65.00 FEET TO THE POINT OF BEGINNING;

THENCE THE NEXT TWELVE (12) COURSES AND DISTANCES OVER SAID LOT:

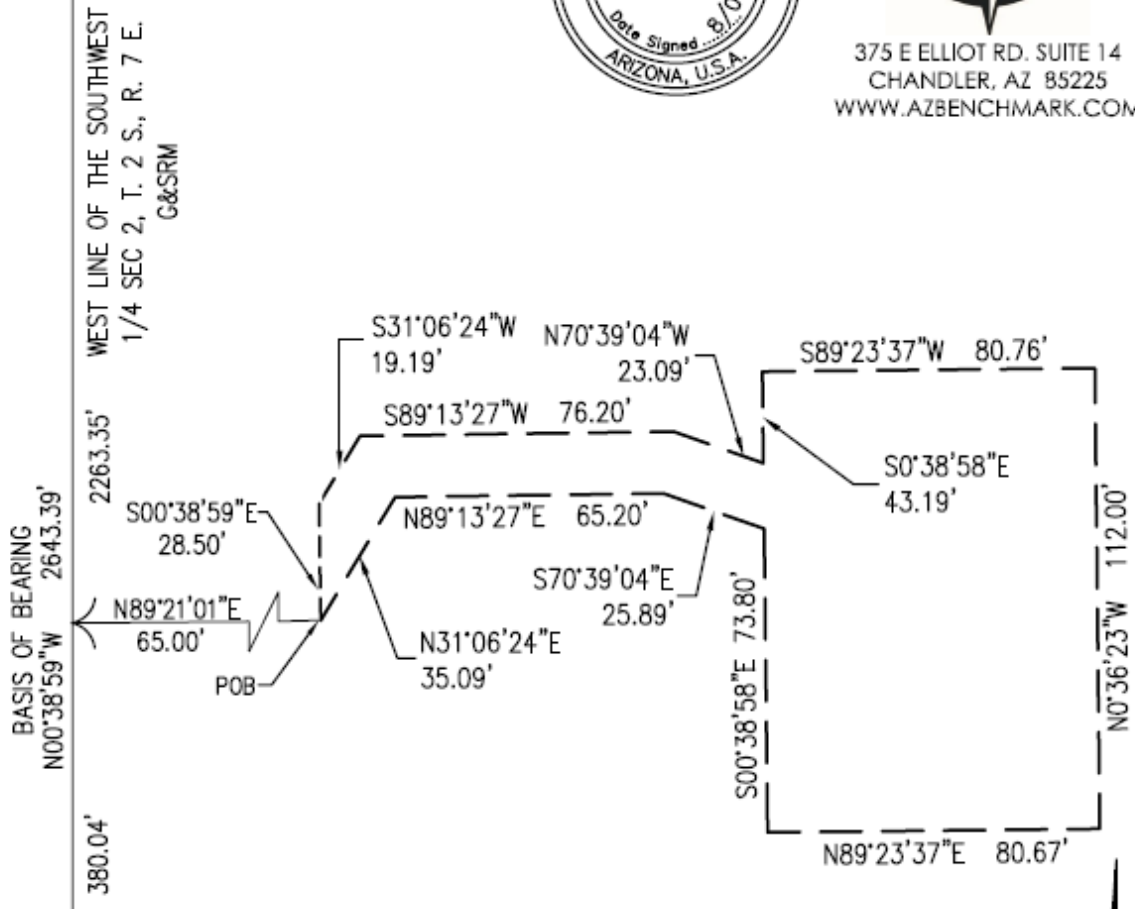
- 1) N31°06'24"E A DISTANCE OF 35.09 FEET.
- 2) N89°13'27"E A DISTANCE OF 65.20 FEET.
- 3) S70°39'04"E A DISTANCE OF 25.89 FEET.
- 4) S00°38'58"E A DISTANCE OF 73.80 FEET.
- 5) N89°23'37"E A DISTANCE OF 80.67 FEET.
- 6) N00°36'23"W A DISTANCE OF 112.00 FEET.
- 7) S89°23'37"W A DISTANCE OF 80.76 FEET.
- 8) S00°38'58"E A DISTANCE OF 43.19 FEET.
- 9) N70°39'04"W A DISTANCE OF 23.09 FEET.
- 10) S89°13'27"W A DISTANCE OF 76.20 FEET.
- 11) S31°06'24"W A DISTANCE OF 19.19 FEET.
- 12) S00°38'59"E A DISTANCE OF 28.50 FEET TO THE POINT OF BEGINNING.



W 1/4 COR
 SEC 2 T2S, R7E
 FD 0.5" STEEL ROD




375 E ELLIOT RD. SUITE 14
 CHANDLER, AZ 85225
 WWW.AZBENCHMARK.COM



POC
 SW COR
 SEC 2 T2S, R7E
 FD MAG NAIL WITH TAG
 STAMPED LS 32222

SCALE:
 1"=40'
 SE 1/4
 SEC 2
 T. 2 S.
 R. 7 E.



EXHIBIT "A"

LEGAL DESCRIPTION

THE CUBES @ MESA GATEWAY

ABANDONMENT OF PUBLIC UTILITY FACILITY EASEMENT # 3

ABANDONMENT OF A PUBLIC UTILITY FACILITY EASEMENT LOCATED ON LOT 5 IN THE FINAL PLAT OF THE CUBES AT MESA GATEWAY RECORDED IN BOOK 1654, PAGE 15, MARICOPA COUNTY RECORDS (MCR) AND LOCATED IN THE WEST HALF OF SECTION 2, TOWNSHIP 2 SOUTH, RANGE 7 EAST OF THE GILA AND SALT RIVER MERIDIAN, CITY OF MESA, MARICOPA COUNTY, ARIZONA, MORE PARTICULARLY DESCRIBED AS FOLLOWS:

COMMENCING AT THE SOUTHWEST CORNER OF SAID SECTION (MAG NAIL WITH TAG STAMPED LS 32222) FROM WHICH POINT THE WEST QUARTER CORNER (0.5" STEEL ROD) THEREOF BEARS N00°38'59"W, A DISTANCE OF 2643.39 FEET;

THENCE N00°38'59" W, ALONG THE WEST LINE OF THE SOUTHWEST QUARTER OF SAID SECTION, A DISTANCE OF 565.08 FEET;

THENCE N89°21'01"E, ACROSS THE PROPOSED 65 FOOT RIGHT OF WAY, A DISTANCE OF 65.00 FEET TO THE POINT OF BEGINNING;

THENCE THE NEXT EIGHT (8) COURSES AND DISTANCES OVER SAID LOT:

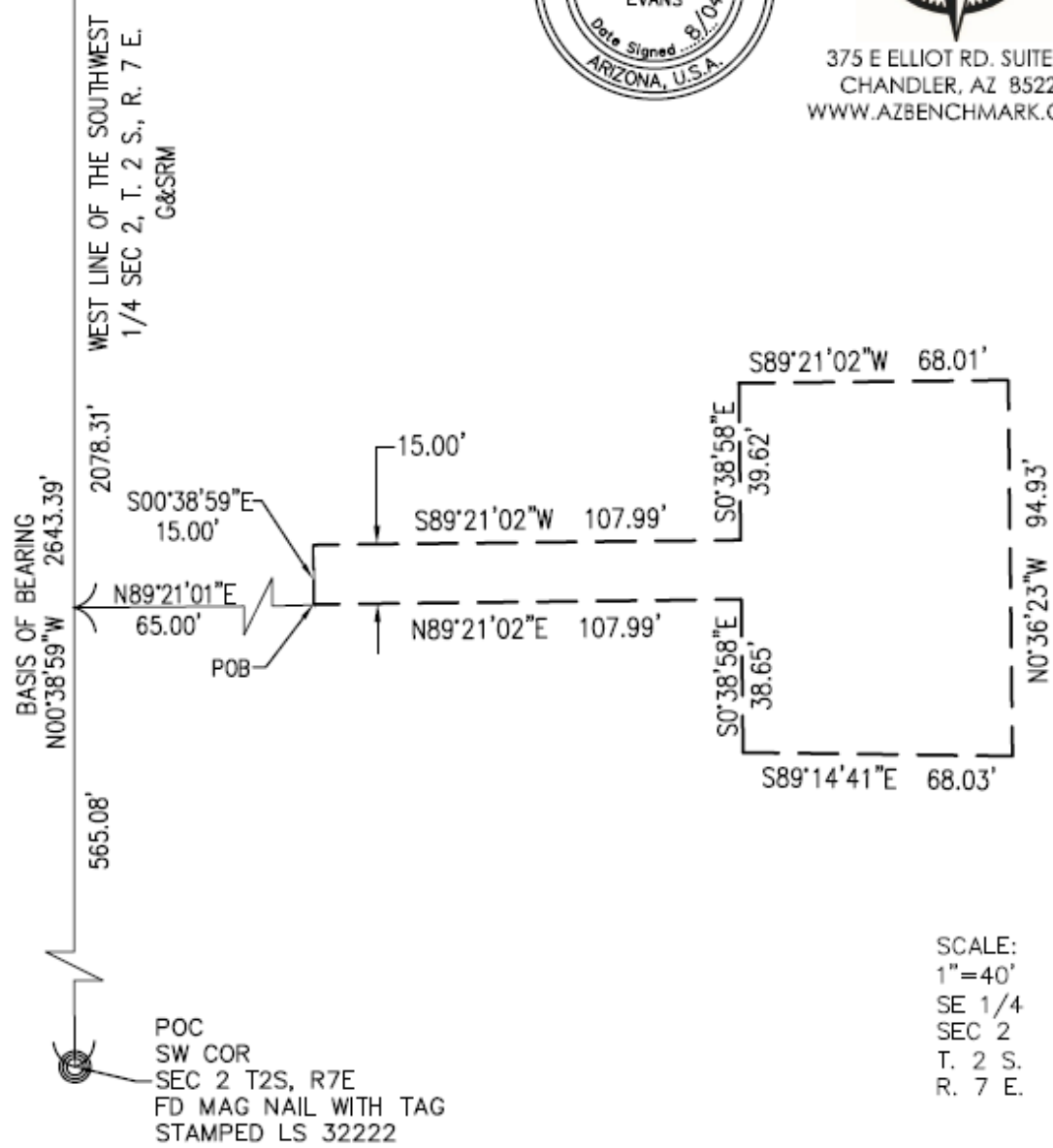
- 1) N89°21'02"E A DISTANCE OF 107.99 FEET.
- 2) S00°38'58"E A DISTANCE OF 38.65 FEET.
- 3) S89°14'41"E A DISTANCE OF 68.03 FEET.
- 4) N00°36'23"W A DISTANCE OF 94.93 FEET.
- 5) S89°21'02"W A DISTANCE OF 68.01 FEET.
- 6) S00°38'58"E A DISTANCE OF 39.62 FEET.
- 7) S89°21'02"W A DISTANCE OF 107.99 FEET.
- 8) S00°38'59"E A DISTANCE OF 15.00 FEET TO THE POINT OF BEGINNING.



W 1/4 COR
 SEC 2 T2S, R7E
 FD 0.5" STEEL ROD



375 E ELLIOT RD. SUITE 14
 CHANDLER, AZ 85225
 WWW.AZBENCHMARK.COM



POC
 SW COR
 SEC 2 T2S, R7E
 FD MAG NAIL WITH TAG
 STAMPED LS 32222

SCALE:
 1"=40'
 SE 1/4
 SEC 2
 T. 2 S.
 R. 7 E.

EXHIBIT "A"

LEGAL DESCRIPTION

THE CUBES @ MESA GATEWAY

ABANDONMENT OF PUBLIC UTILITY FACILITY EASEMENT # 4

ABANDONMENT OF A PUBLIC UTILITY FACILITY EASEMENT LOCATED ON LOT 5 IN THE FINAL PLAT OF THE CUBES AT MESA GATEWAY RECORDED IN BOOK 1654, PAGE 15, MARICOPA COUNTY RECORDS (MCR) AND LOCATED IN THE WEST HALF OF SECTION 2, TOWNSHIP 2 SOUTH, RANGE 7 EAST OF THE GILA AND SALT RIVER MERIDIAN, CITY OF MESA, MARICOPA COUNTY, ARIZONA, MORE PARTICULARLY DESCRIBED AS FOLLOWS:

COMMENCING AT THE SOUTHWEST CORNER OF SAID SECTION (MAG NAIL WITH TAG STAMPED LS 32222) FROM WHICH POINT THE WEST QUARTER CORNER (0.5" STEEL ROD) THEREOF BEARS N00°38'59"W, A DISTANCE OF 2643.39 FEET;

THENCE N00°38'59" W, ALONG THE WEST LINE OF THE SOUTHWEST QUARTER OF SAID SECTION, A DISTANCE OF 770.08 FEET;

THENCE N89°21'01"E, ACROSS THE PROPOSED 65 FOOT RIGHT OF WAY, A DISTANCE OF 65.00 FEET TO THE POINT OF BEGINNING;

THENCE THE NEXT EIGHT (8) COURSES AND DISTANCES OVER SAID LOT:

- 1) S65°01'57"E A DISTANCE OF 119.76 FEET.
- 2) S00°38'58"E A DISTANCE OF 49.03 FEET.
- 3) N89°23'37"E A DISTANCE OF 68.58 FEET.
- 4) N00°36'23"W A DISTANCE OF 94.00 FEET.
- 5) S89°23'37"W A DISTANCE OF 68.65 FEET.
- 6) S00°38'58"E A DISTANCE OF 28.34 FEET.
- 7) N65°01'57"W A DISTANCE OF 119.76 FEET.
- 8) S00°38'59"E A DISTANCE OF 16.64 FEET TO THE POINT OF BEGINNING.



W 1/4 COR
 SEC 2 T2S, R7E
 FD 0.5" STEEL ROD



375 E ELLIOT RD. SUITE 14
 CHANDLER, AZ 85225
 WWW.AZBENCHMARK.COM

WEST LINE OF THE SOUTHWEST
 1/4 SEC 2, T. 2 S., R. 7 E.
 G46833M31'

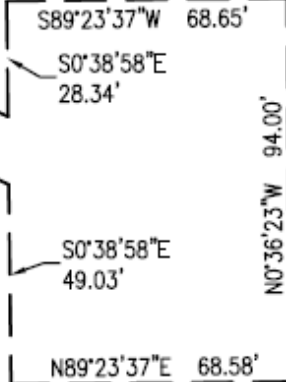
BASIS OF BEARING
 N00°38'59"W 2643.39'
 770.08'

S00°38'59"E
 16.64'

N89°21'01"E
 65.00'

POB

N65°01'57"W 119.76'
 S65°01'57"E 119.76'



POC
 SW COR
 SEC 2 T2S, R7E
 FD MAG NAIL WITH TAG
 STAMPED LS 32222

SCALE:
 1"=40'
 SE 1/4
 SEC 2
 T. 2 S.
 R. 7 E.



EXHIBIT "A"

LEGAL DESCRIPTION

THE CUBES @ MESA GATEWAY

ABANDONMENT OF PUBLIC UTILITY FACILITY EASEMENT # 5

ABANDONMENT OF A PUBLIC UTILITY FACILITY EASEMENT LOCATED ON LOT 4 AND 5 IN THE FINAL PLAT OF THE CUBES AT MESA GATEWAY RECORDED IN BOOK 1654, PAGE 15, MARICOPA COUNTY RECORDS (MCR) AND LOCATED IN THE WEST HALF OF SECTION 2, TOWNSHIP 2 SOUTH, RANGE 7 EAST OF THE GILA AND SALT RIVER MERIDIAN, CITY OF MESA, MARICOPA COUNTY, ARIZONA, MORE PARTICULARLY DESCRIBED AS FOLLOWS:

COMMENCING AT THE SOUTHWEST CORNER OF SAID SECTION (MAG NAIL WITH TAG STAMPED LS 32222) FROM WHICH POINT THE WEST QUARTER CORNER (0.5" STEEL ROD) THEREOF BEARS N00°38'59"W, A DISTANCE OF 2643.39 FEET;

THENCE N00°38'59" W, ALONG THE WEST LINE OF THE SOUTHWEST QUARTER OF SAID SECTION, A DISTANCE OF 1307.70 FEET;

THENCE N89°21'01"E, ACROSS THE PROPOSED 65 FOOT RIGHT OF WAY, A DISTANCE OF 65.00 FEET TO THE POINT OF BEGINNING;

THENCE THE NEXT EIGHT (8) COURSES AND DISTANCES OVER SAID LOT:

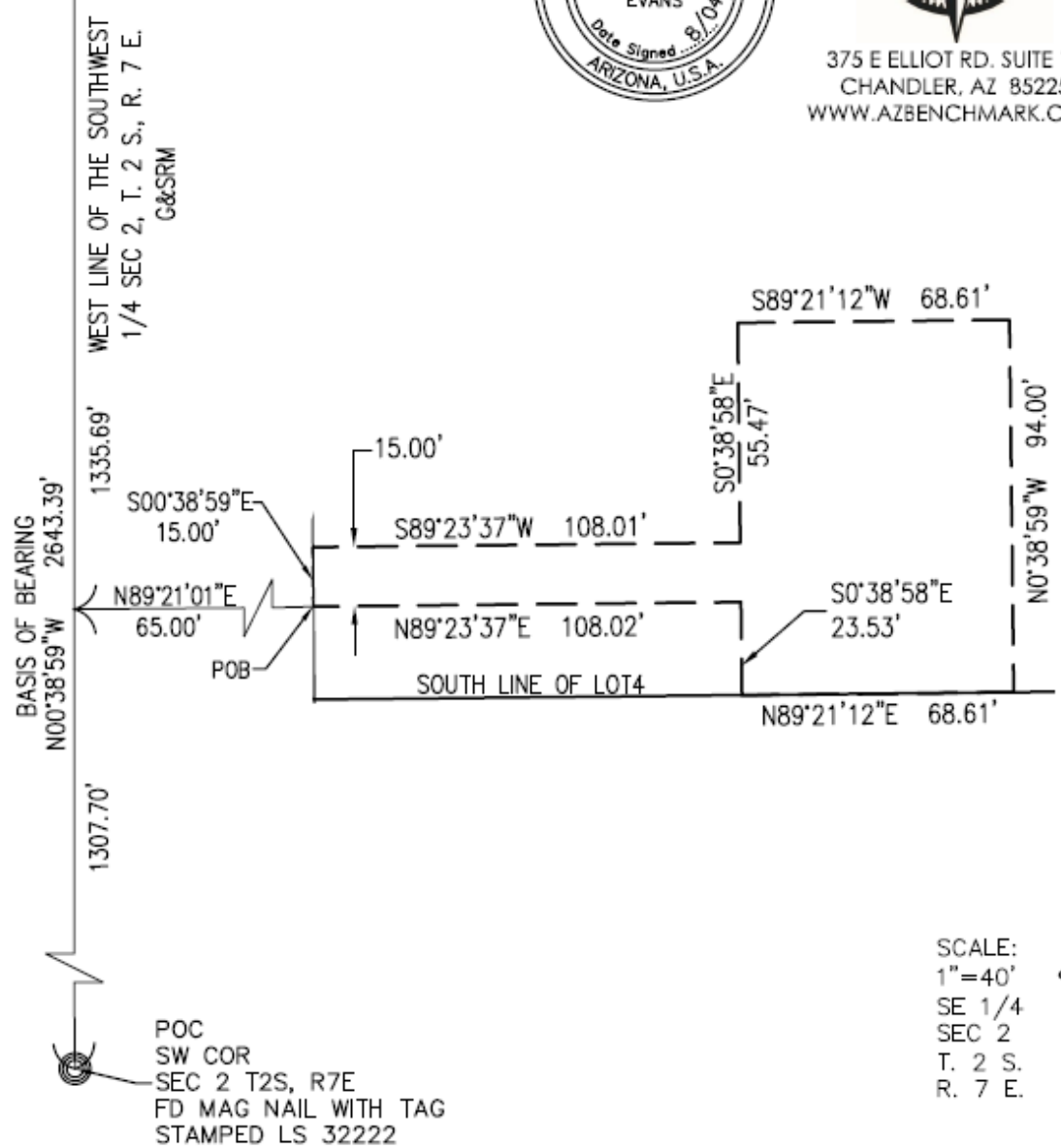
- 1) N89°23'37"E A DISTANCE OF 108.02 FEET.
- 2) S00°38'58"E A DISTANCE OF 23.53 FEET.
- 3) N89°21'12"E A DISTANCE OF 68.61 FEET.
- 4) N00°38'59"W A DISTANCE OF 94.00 FEET.
- 5) S89°21'12"W A DISTANCE OF 68.61 FEET.
- 6) S00°38'58"E A DISTANCE OF 55.47 FEET.
- 7) S89°23'37"W A DISTANCE OF 108.01 FEET.
- 8) S00°38'59"E A DISTANCE OF 15.00 FEET TO THE POINT OF BEGINNING.



W 1/4 COR
 SEC 2 T2S, R7E
 FD 0.5" STEEL ROD



375 E ELLIOT RD. SUITE 14
 CHANDLER, AZ 85225
 WWW.AZBENCHMARK.COM



SCALE:
 1"=40'
 SE 1/4
 SEC 2
 T. 2 S.
 R. 7 E.

EXHIBIT "A"

LEGAL DESCRIPTION

THE CUBES @ MESA GATEWAY

ABANDONMENT OF PUBLIC UTILITY FACILITY EASEMENT # 6

ABANDONMENT OF A PUBLIC UTILITY FACILITY EASEMENT LOCATED ON LOT 4 IN THE FINAL PLAT OF THE CUBES AT MESA GATEWAY RECORDED IN BOOK 1654, PAGE 15, MARICOPA COUNTY RECORDS (MCR) AND LOCATED IN THE WEST HALF OF SECTION 2, TOWNSHIP 2 SOUTH, RANGE 7 EAST OF THE GILA AND SALT RIVER MERIDIAN, CITY OF MESA, MARICOPA COUNTY, ARIZONA, MORE PARTICULARLY DESCRIBED AS FOLLOWS:

COMMENCING AT THE SOUTHWEST CORNER OF SAID SECTION (MAG NAIL WITH TAG STAMPED LS 32222) FROM WHICH POINT THE WEST QUARTER CORNER (0.5" STEEL ROD) THEREOF BEARS N00°38'59"W, A DISTANCE OF 2643.39 FEET;

THENCE N00°38'59" W, ALONG THE WEST LINE OF THE SOUTHWEST QUARTER OF SAID SECTION, A DISTANCE OF 1695.19 FEET;

THENCE N89°21'01"E, ACROSS THE PROPOSED 65 FOOT RIGHT OF WAY, A DISTANCE OF 65.00 FEET TO THE POINT OF BEGINNING;

THENCE THE NEXT TWELVE (12) COURSES AND DISTANCES OVER SAID LOT:

- 1) N37°34'43"E A DISTANCE OF 24.80 FEET.
- 2) N89°13'27"E A DISTANCE OF 75.82 FEET.
- 3) S72°07'18"E A DISTANCE OF 17.75 FEET.
- 4) S00°38'58"E A DISTANCE OF 58.47 FEET.
- 5) N89°21'01"E A DISTANCE OF 69.00 FEET.
- 6) N00°38'59"W A DISTANCE OF 94.00 FEET.
- 7) S89°21'01"W A DISTANCE OF 69.00 FEET.
- 8) S00°38'58"E A DISTANCE OF 19.71 FEET.
- 9) N72°07'18"W A DISTANCE OF 15.19 FEET.
- 10) S89°13'27"W A DISTANCE OF 85.54 FEET.
- 11) S37°34'43"W A DISTANCE OF 13.02 FEET.
- 12) S00°38'59"E A DISTANCE OF 24.24 FEET TO THE POINT OF BEGINNING.



W 1/4 COR
 SEC 2 T2S, R7E
 FD 0.5" STEEL ROD



375 E ELLIOT RD. SUITE 14
 CHANDLER, AZ 85225
 WWW.AZBENCHMARK.COM

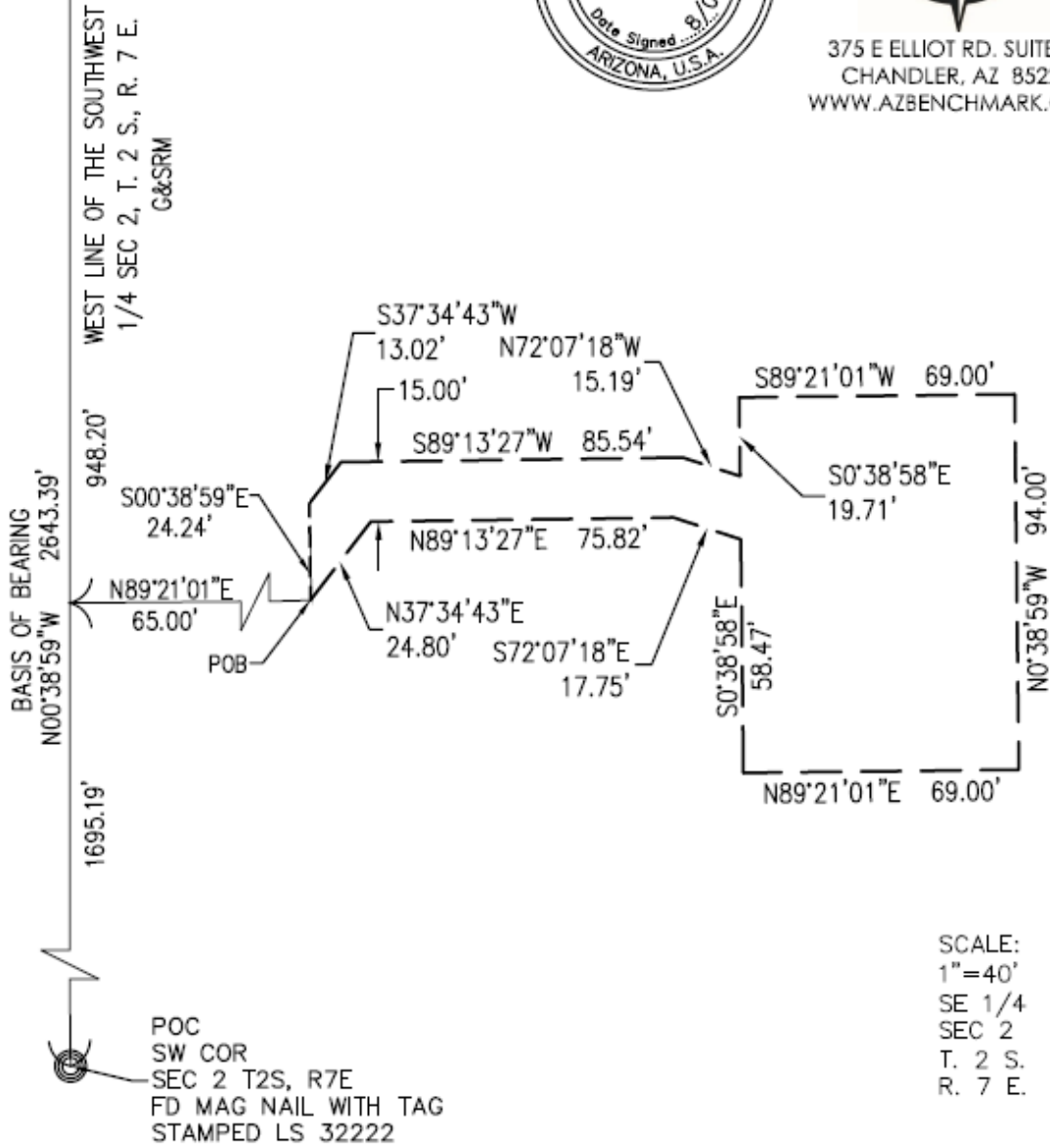


EXHIBIT "A"

LEGAL DESCRIPTION

THE CUBES @ MESA GATEWAY

ABANDONMENT OF PUBLIC UTILITY FACILITY EASEMENT # 7

ABANDONMENT OF A PUBLIC UTILITY FACILITY EASEMENT LOCATED ON LOT 4 IN THE FINAL PLAT OF THE CUBES AT MESA GATEWAY RECORDED IN BOOK 1654, PAGE 15, MARICOPA COUNTY RECORDS (MCR) AND LOCATED IN THE WEST HALF OF SECTION 2, TOWNSHIP 2 SOUTH, RANGE 7 EAST OF THE GILA AND SALT RIVER MERIDIAN, CITY OF MESA, MARICOPA COUNTY, ARIZONA, MORE PARTICULARLY DESCRIBED AS FOLLOWS:

COMMENCING AT THE SOUTHWEST CORNER OF SAID SECTION (MAG NAIL WITH TAG STAMPED LS 32222) FROM WHICH POINT THE WEST QUARTER CORNER (0.5" STEEL ROD) THEREOF BEARS N00°38'59"W, A DISTANCE OF 2643.39 FEET;

THENCE N00°38'59" W, ALONG THE WEST LINE OF THE SOUTHWEST QUARTER OF SAID SECTION, A DISTANCE OF 2194.14 FEET;

THENCE N89°21'01"E, ACROSS THE PROPOSED 65 FOOT RIGHT OF WAY, A DISTANCE OF 65.00 FEET TO THE POINT OF BEGINNING

THENCE THE NEXT EIGHT (8) COURSES AND DISTANCES OVER SAID LOT:

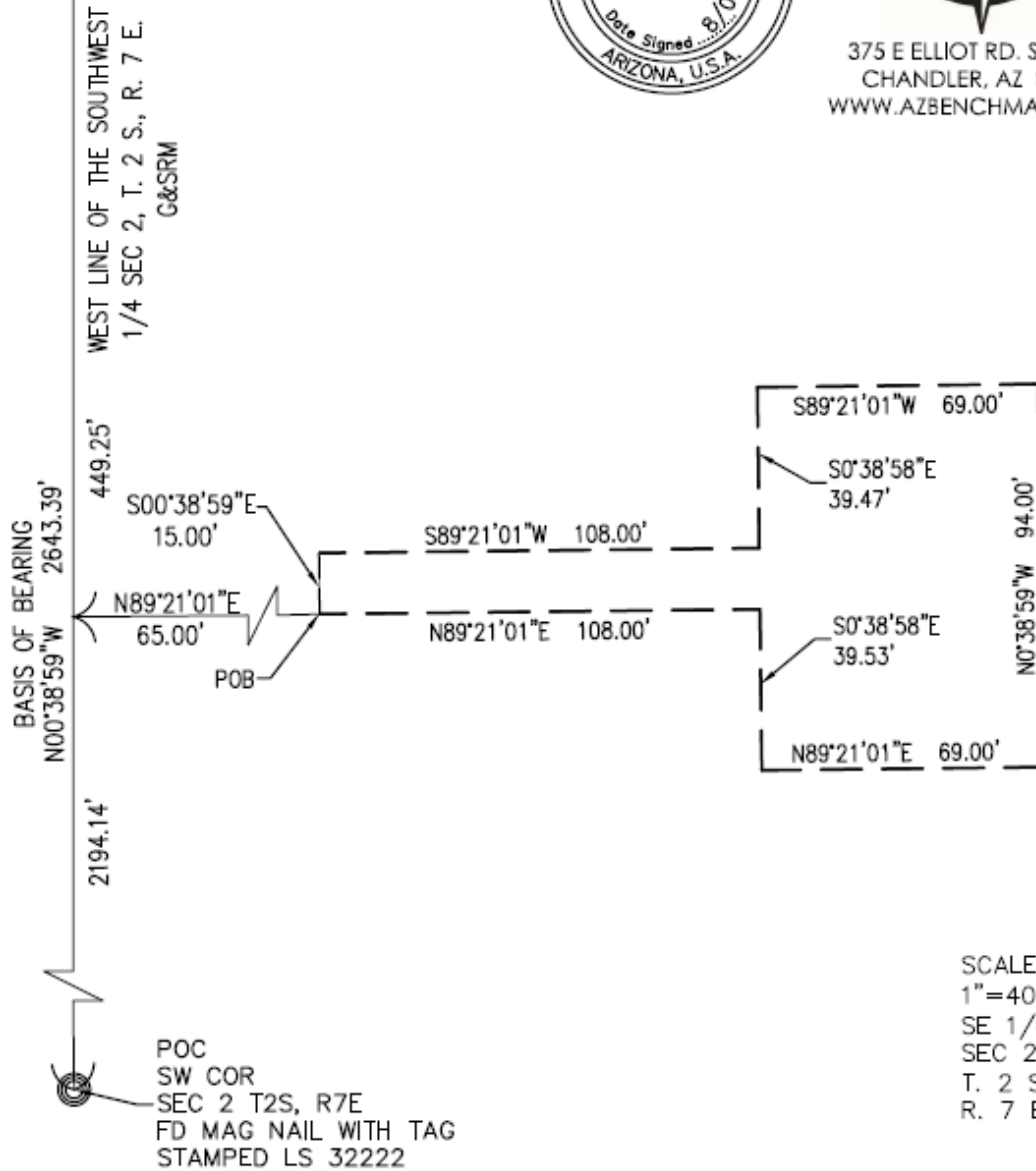
- 1) N89°21'01"E A DISTANCE OF 108.00 FEET.
- 2) S00°38'58"E A DISTANCE OF 39.53 FEET.
- 3) N89°21'01"E A DISTANCE OF 69.00 FEET.
- 4) N00°38'59"W A DISTANCE OF 94.00 FEET.
- 5) S89°21'01"W A DISTANCE OF 69.00 FEET.
- 6) S00°38'58"E A DISTANCE OF 39.47 FEET.
- 7) S89°21'01"W A DISTANCE OF 108.00 FEET.
- 8) S00°38'59"E A DISTANCE OF 15.00 FEET TO THE POINT OF BEGINNING.



W 1/4 COR
SEC 2 T2S, R7E
FD 0.5" STEEL ROD



375 E ELLIOT RD. SUITE 14
CHANDLER, AZ 85225
WWW.AZBENCHMARK.COM



SCALE:
1"=40'
SE 1/4
SEC 2
T. 2 S.
R. 7 E.



EXHIBIT "A"

LEGAL DESCRIPTION

THE CUBES @ MESA GATEWAY

ABANDONMENT OF PUBLIC UTILITY FACILITY EASEMENT # 8

ABANDONMENT OF A PUBLIC UTILITY FACILITY EASEMENT LOCATED ON LOT 3 IN THE FINAL PLAT OF THE CUBES AT MESA GATEWAY RECORDED IN BOOK 1654, PAGE 15, MARICOPA COUNTY RECORDS (MCR) AND LOCATED IN THE WEST HALF OF SECTION 2, TOWNSHIP 2 SOUTH, RANGE 7 EAST OF THE GILA AND SALT RIVER MERIDIAN, CITY OF MESA, MARICOPA COUNTY, ARIZONA, MORE PARTICULARLY DESCRIBED AS FOLLOWS:

COMMENCING AT THE SOUTHWEST CORNER OF SAID SECTION (MAG NAIL WITH TAG STAMPED LS 32222) FROM WHICH POINT THE WEST QUARTER CORNER (0.5" STEEL ROD) THEREOF BEARS N00°38'59"W, A DISTANCE OF 2643.39 FEET;

THENCE N00°38'59" W, ALONG THE WEST LINE OF THE SOUTHWEST QUARTER OF SAID SECTION, A DISTANCE OF 2553.78 FEET;

THENCE N89°21'01"E, ACROSS THE PROPOSED 65 FOOT RIGHT OF WAY, A DISTANCE OF 65.00 FEET TO THE POINT OF BEGINNING;

THENCE THE NEXT EIGHT (8) COURSES AND DISTANCES OVER SAID LOT:

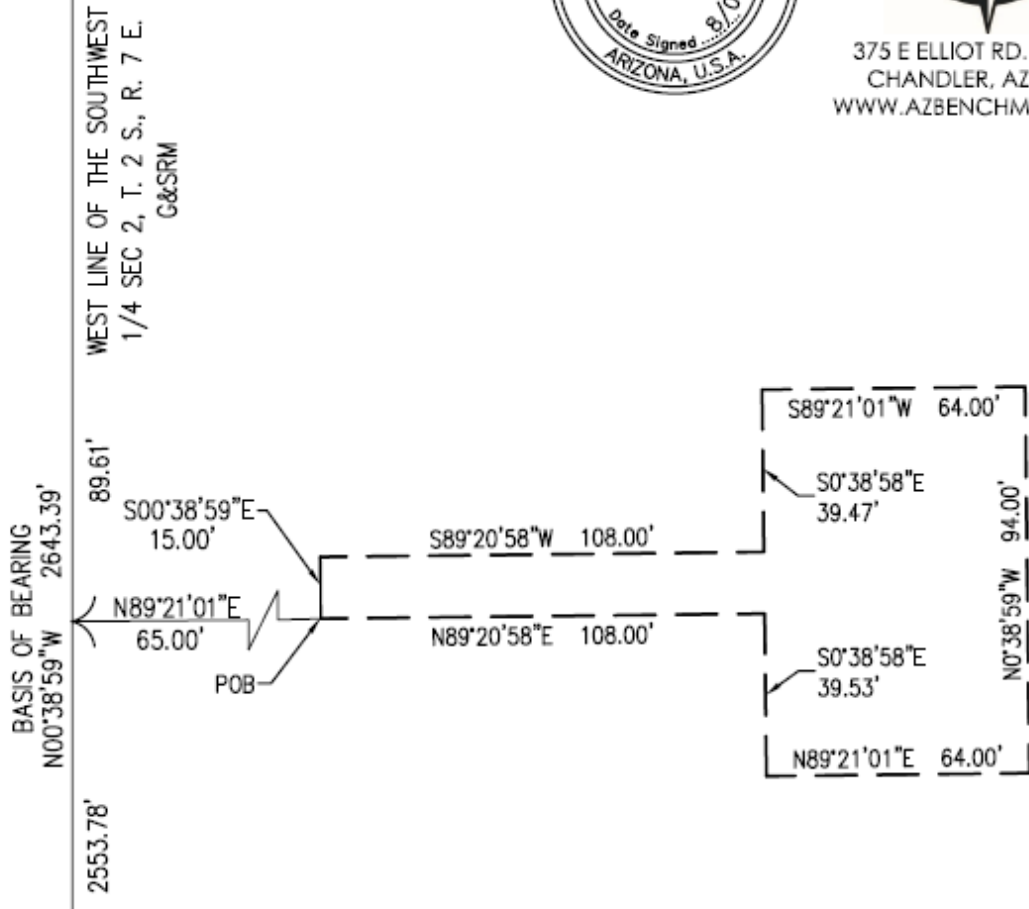
- 1) N89°20'58"E A DISTANCE OF 108.00 FEET.
- 2) S00°38'58"E A DISTANCE OF 39.53 FEET.
- 3) N89°21'01"E A DISTANCE OF 64.00 FEET.
- 4) N00°38'59"W A DISTANCE OF 94.00 FEET.
- 5) S89°21'01"W A DISTANCE OF 64.00 FEET.
- 6) S00°38'58"E A DISTANCE OF 39.47 FEET.
- 7) S89°20'58"W A DISTANCE OF 108.00 FEET.
- 8) S00°38'59"E A DISTANCE OF 15.00 FEET TO THE POINT OF BEGINNING.



W 1/4 COR
 SEC 2 T2S, R7E
 FD 0.5" STEEL ROD



375 E ELLIOT RD. SUITE 14
 CHANDLER, AZ 85225
 WWW.AZBENCHMARK.COM



SCALE:
 1"=40'
 SE 1/4
 SEC 2
 T. 2 S.
 R. 7 E.



EXHIBIT "A"

LEGAL DESCRIPTION

THE CUBES @ MESA GATEWAY

ABANDONMENT OF PUBLIC UTILITY FACILITY EASEMENT # 9

ABANDONMENT OF A PUBLIC UTILITY FACILITY EASEMENT LOCATED ON LOT 3 IN THE FINAL PLAT OF THE CUBES AT MESA GATEWAY RECORDED IN BOOK 1654, PAGE 15, MARICOPA COUNTY RECORDS (MCR) AND LOCATED IN THE WEST HALF OF SECTION 2, TOWNSHIP 2 SOUTH, RANGE 7 EAST OF THE GILA AND SALT RIVER MERIDIAN, CITY OF MESA, MARICOPA COUNTY, ARIZONA, MORE PARTICULARLY DESCRIBED AS FOLLOWS:

COMMENCING AT THE WEST QUARTER CORNER OF SAID SECTION (0.5" STEEL ROD) FROM WHICH POINT THE NORTHWEST CORNER (COTTON SPINDLE) THEREOF BEARS N00°36'23"W, A DISTANCE OF 2652.06 FEET;

THENCE N00°36'23"W, ALONG THE WEST LINE OF THE NORTHWEST QUARTER OF SAID SECTION, A DISTANCE OF 429.96 FEET;

THENCE N89°23'37"E, ACROSS THE PROPOSED 65 FOOT RIGHT OF WAY, A DISTANCE OF 65.00 FEET TO THE POINT OF BEGINNING;

THENCE THE NEXT EIGHT (8) COURSES AND DISTANCES OVER SAID LOT:

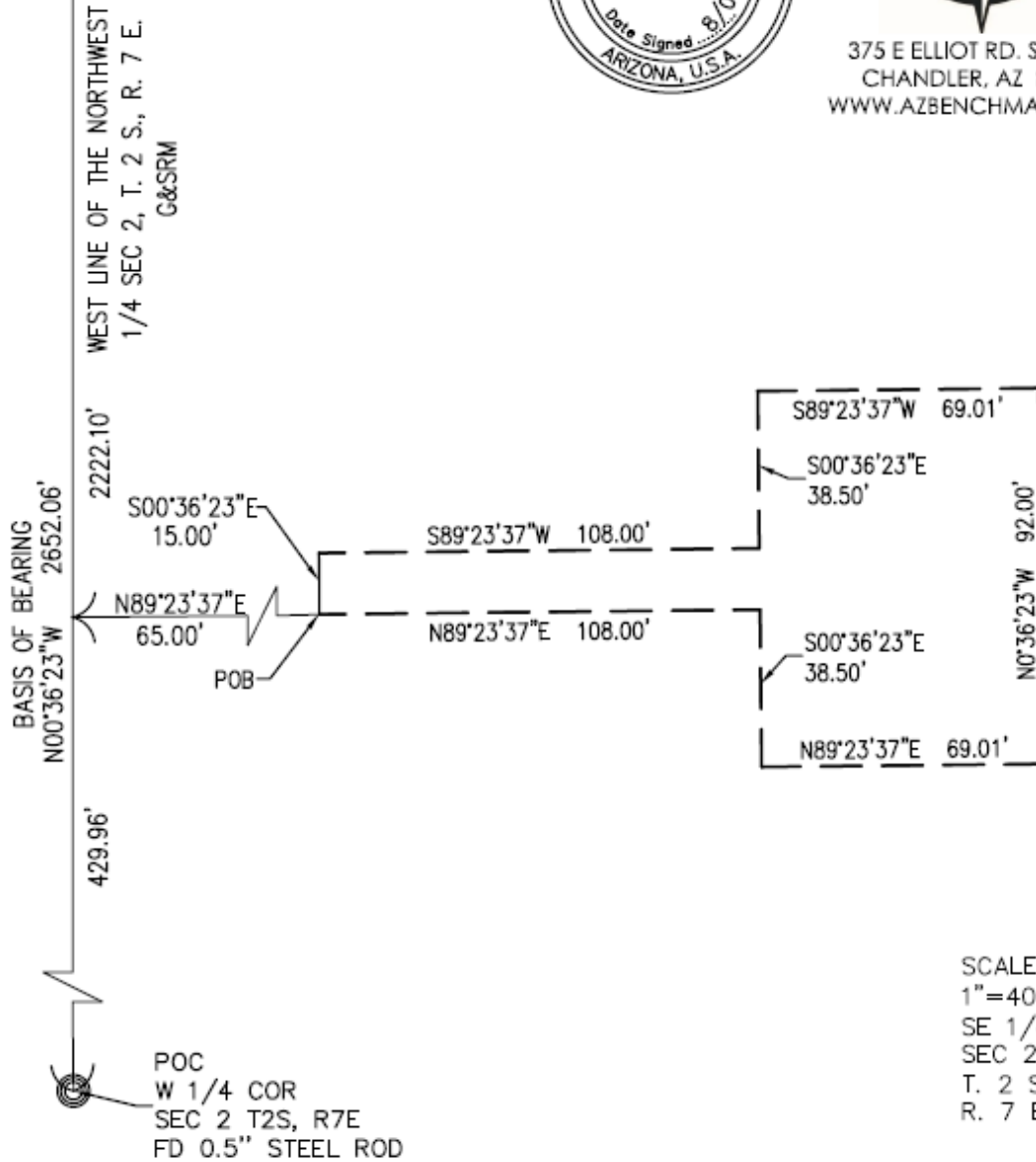
- 1) N89°23'37"E A DISTANCE OF 108.00 FEET.
- 2) S00°36'23"E A DISTANCE OF 38.50 FEET.
- 3) N89°23'37"E A DISTANCE OF 69.01 FEET.
- 4) N00°36'23"W A DISTANCE OF 92.00 FEET.
- 5) S89°23'37"W A DISTANCE OF 69.01 FEET.
- 6) S00°36'23"E A DISTANCE OF 38.50 FEET.
- 7) S89°23'37"W A DISTANCE OF 108.00 FEET.
- 8) S00°36'23"E A DISTANCE OF 15.00 FEET TO THE POINT OF BEGINNING.



NW COR
 SEC 2 T2S, R7E
 FD COTTON SPINDLE



375 E ELLIOT RD. SUITE 14
 CHANDLER, AZ 85225
 WWW.AZBENCHMARK.COM



SCALE:
 1"=40'
 SE 1/4
 SEC 2
 T. 2 S.
 R. 7 E.



EXHIBIT "A"

LEGAL DESCRIPTION

THE CUBES @ MESA GATEWAY

ABANDONMENT OF PUBLIC UTILITY FACILITY EASEMENT # 10

ABANDONMENT OF A PUBLIC UTILITY FACILITY EASEMENT LOCATED ON LOT 3 IN THE FINAL PLAT OF THE CUBES AT MESA GATEWAY RECORDED IN BOOK 1654, PAGE 15, MARICOPA COUNTY RECORDS (MCR) AND LOCATED IN THE WEST HALF OF SECTION 2, TOWNSHIP 2 SOUTH, RANGE 7 EAST OF THE GILA AND SALT RIVER MERIDIAN, CITY OF MESA, MARICOPA COUNTY, ARIZONA, MORE PARTICULARLY DESCRIBED AS FOLLOWS:

COMMENCING AT THE WEST QUARTER CORNER OF SAID SECTION (0.5" STEEL ROD) FROM WHICH POINT THE NORTHWEST CORNER (COTTON SPINDLE) THEREOF BEARS N00°36'23"W, A DISTANCE OF 2652.06 FEET;

THENCE N00°36'23"W, ALONG THE WEST LINE OF THE NORTHWEST QUARTER OF SAID SECTION, A DISTANCE OF 618.72 FEET;

THENCE N89°23'37"E, ACROSS THE PROPOSED 65 FOOT RIGHT OF WAY, A DISTANCE OF 65.00 FEET TO THE POINT OF BEGINNING;

THENCE THE NEXT EIGHT (8) COURSES AND DISTANCES OVER SAID LOT:

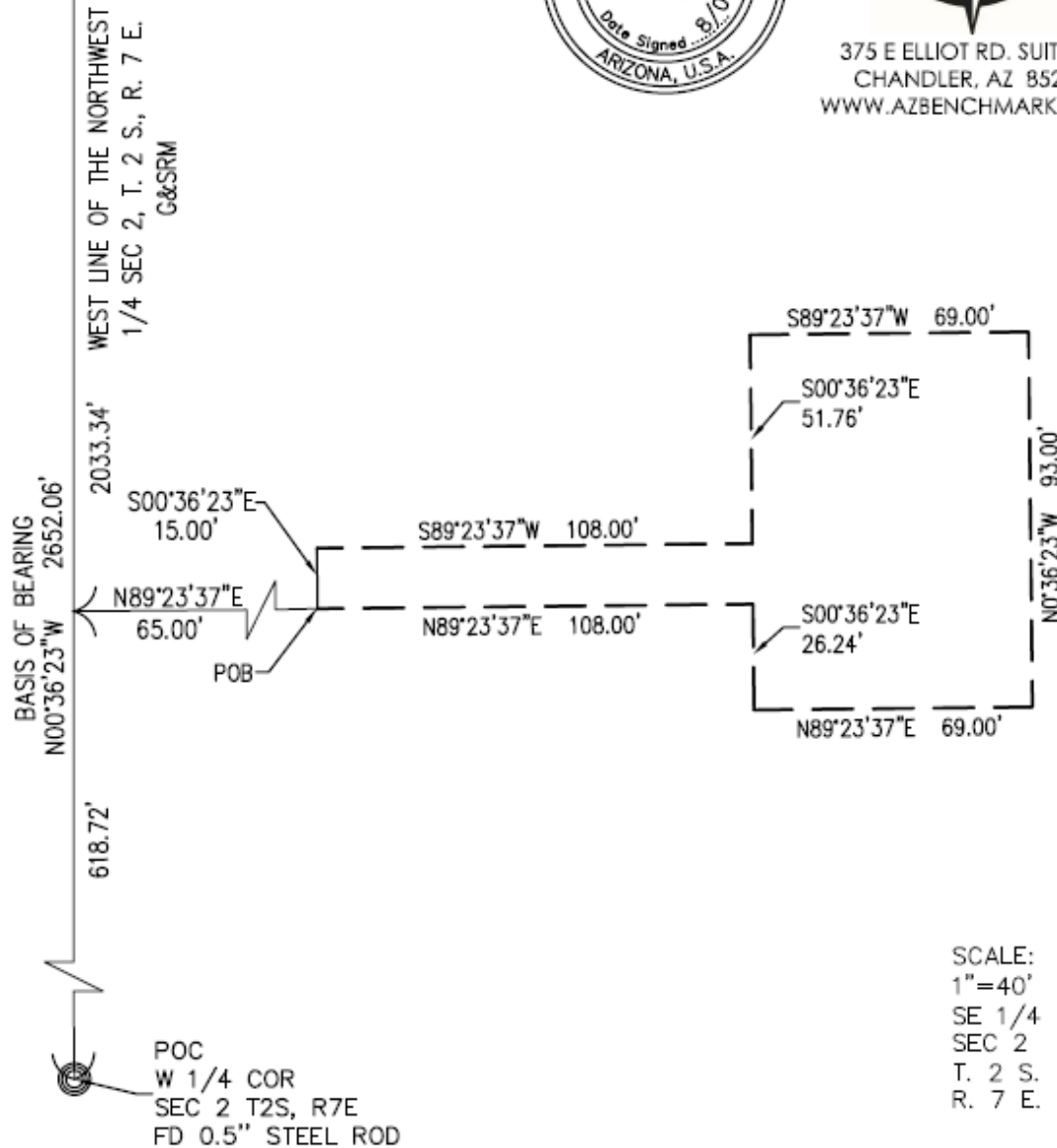
- 1) N89°23'37"E A DISTANCE OF 108.00 FEET.
- 2) S00°36'23"E A DISTANCE OF 26.24 FEET.
- 3) N89°23'37"E A DISTANCE OF 69.00 FEET.
- 4) N00°36'23"W A DISTANCE OF 93.00 FEET.
- 5) S89°23'37"W A DISTANCE OF 69.00 FEET.
- 6) S00°36'23"E A DISTANCE OF 51.76 FEET.
- 7) S89°23'37"W A DISTANCE OF 108.00 FEET.
- 8) S00°36'23"E A DISTANCE OF 15.00 FEET TO THE POINT OF BEGINNING.



NW COR
 SEC 2 T2S, R7E
 FD COTTON SPINDLE



375 E ELLIOT RD. SUITE 14
 CHANDLER, AZ 85225
 WWW.AZBENCHMARK.COM



SCALE:
 1"=40'
 SE 1/4
 SEC 2
 T. 2 S.
 R. 7 E.



EXHIBIT "A"

LEGAL DESCRIPTION

THE CUBES @ MESA GATEWAY

ABANDONMENT OF PUBLIC UTILITY FACILITY EASEMENT # 11

ABANDONMENT OF A PUBLIC UTILITY FACILITY EASEMENT LOCATED ON LOT 3 IN THE FINAL PLAT OF THE CUBES AT MESA GATEWAY RECORDED IN BOOK 1654, PAGE 15, MARICOPA COUNTY RECORDS (MCR) AND LOCATED IN THE WEST HALF OF SECTION 2, TOWNSHIP 2 SOUTH, RANGE 7 EAST OF THE GILA AND SALT RIVER MERIDIAN, CITY OF MESA, MARICOPA COUNTY, ARIZONA, MORE PARTICULARLY DESCRIBED AS FOLLOWS::

COMMENCING AT THE WEST QUARTER CORNER OF SAID SECTION (0.5" STEEL ROD) FROM WHICH POINT THE NORTHWEST CORNER (COTTON SPINDLE) THEREOF BEARS N00°36'23"W, A DISTANCE OF 2652.06 FEET;

THENCE N00°36'23"W, ALONG THE WEST LINE OF THE NORTHWEST QUARTER OF SAID SECTION, A DISTANCE OF 812.83 FEET;

THENCE N89°23'37"E, ACROSS THE PROPOSED 65 FOOT RIGHT OF WAY, A DISTANCE OF 65.00 FEET TO THE POINT OF BEGINNING;

THENCE THE NEXT TWELVE (12) COURSES AND DISTANCES OVER SAID LOT:

- 1) N82°07'25"E A DISTANCE OF 49.59 FEET.
- 2) N89°53'47"E A DISTANCE OF 83.87 FEET.
- 3) N09°26'21"E A DISTANCE OF 49.29 FEET.
- 4) N89°23'37"E A DISTANCE OF 30.21 FEET.
- 5) N00°36'23"W A DISTANCE OF 94.00 FEET.
- 6) S89°23'37"W A DISTANCE OF 63.93 FEET.
- 7) S00°36'23"E A DISTANCE OF 94.00 FEET.
- 8) N89°23'37"E A DISTANCE OF 33.95 FEET.
- 9) S09°26'21"W A DISTANCE OF 33.95 FEET.
- 10) S89°53'47"W A DISTANCE OF 72.12 FEET.
- 11) S82°07'25"W A DISTANCE OF 48.78 FEET.
- 12) S00°36'23"E A DISTANCE OF 15.12 FEET TO THE POINT OF BEGINNING.



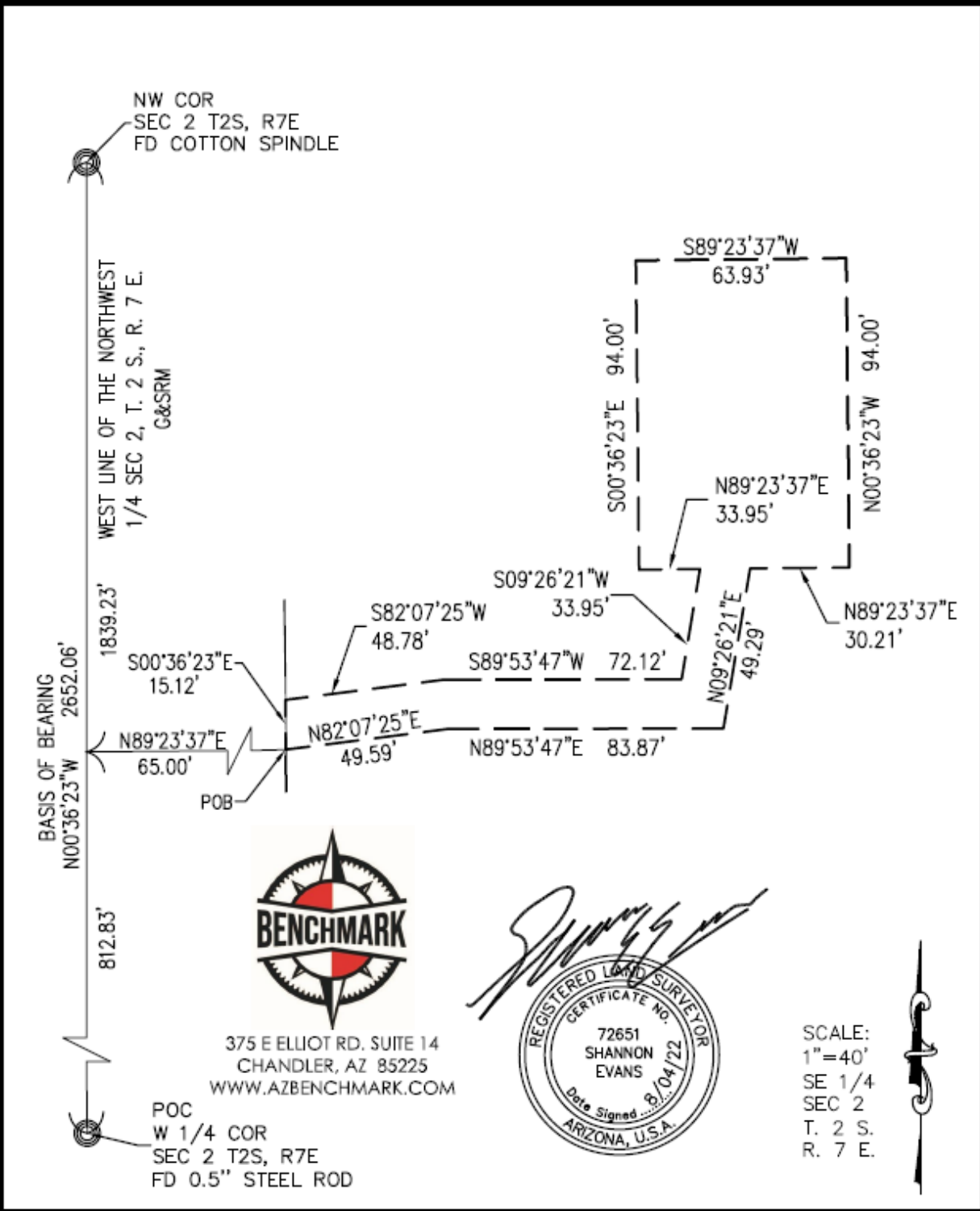


EXHIBIT "A"

LEGAL DESCRIPTION

THE CUBES @ MESA GATEWAY

ABANDONMENT OF PUBLIC UTILITY FACILITY EASEMENT # 12

ABANDONMENT OF A PUBLIC UTILITY FACILITY EASEMENT LOCATED ON LOT 2 IN THE FINAL PLAT OF THE CUBES AT MESA GATEWAY RECORDED IN BOOK 1654, PAGE 15, MARICOPA COUNTY RECORDS (MCR) AND LOCATED IN THE WEST HALF OF SECTION 2, TOWNSHIP 2 SOUTH, RANGE 7 EAST OF THE GILA AND SALT RIVER MERIDIAN, CITY OF MESA, MARICOPA COUNTY, ARIZONA, MORE PARTICULARLY DESCRIBED AS FOLLOWS:

COMMENCING AT THE WEST QUARTER CORNER OF SAID SECTION (0.5" STEEL ROD) FROM WHICH POINT THE NORTHWEST CORNER (COTTON SPINDLE) THEREOF BEARS N00°36'23"W, A DISTANCE OF 2652.06 FEET;

THENCE N00°36'23"W, ALONG THE WEST LINE OF THE NORTHWEST QUARTER OF SAID SECTION, A DISTANCE OF 1317.48 FEET;

THENCE N89°23'37"E, ACROSS THE PROPOSED 65 FOOT RIGHT OF WAY, A DISTANCE OF 65.00 FEET TO THE POINT OF BEGINNING;

THENCE THE NEXT EIGHT (8) COURSES AND DISTANCES OVER SAID LOT:

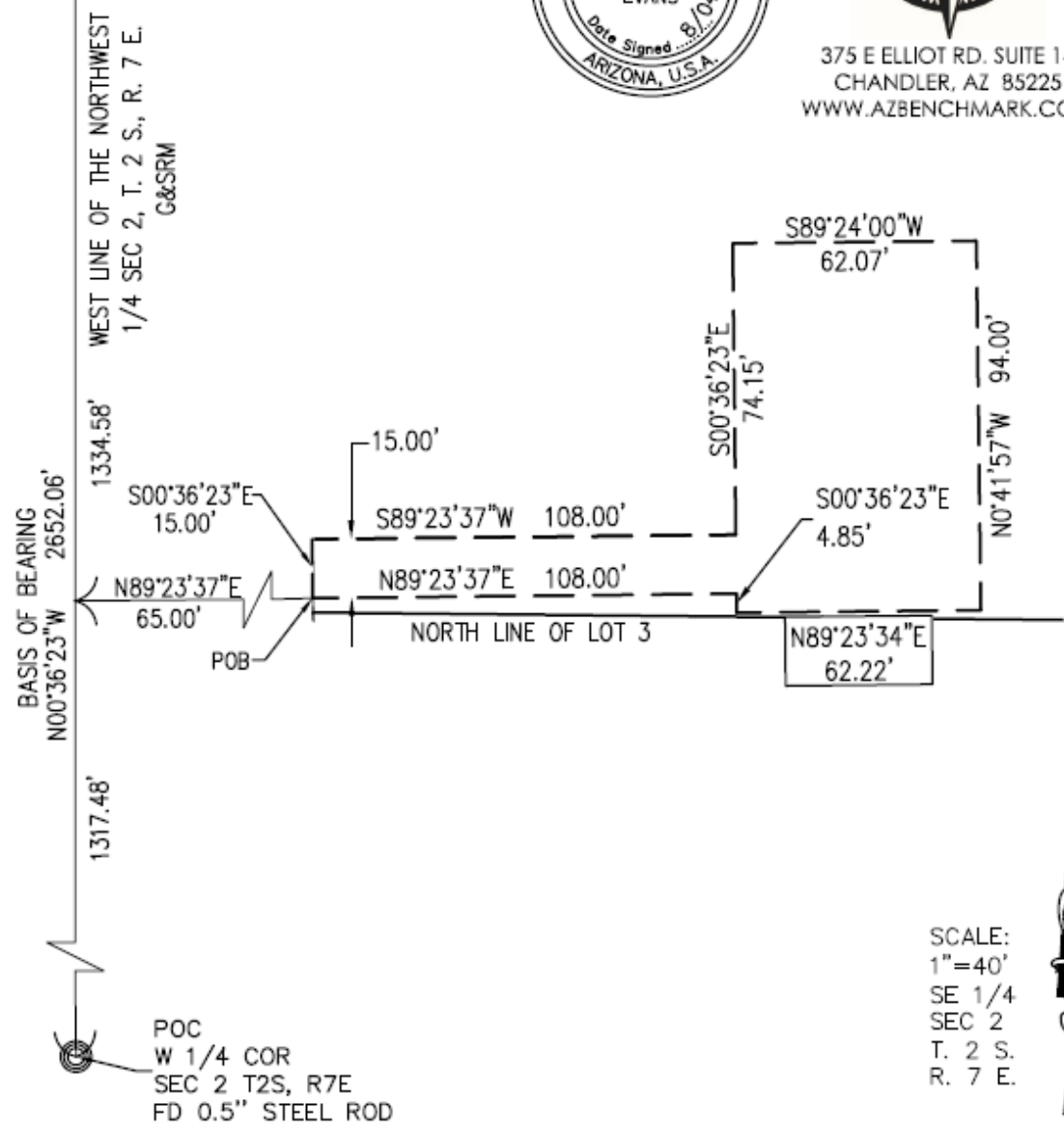
- 1) N89°23'37"E A DISTANCE OF 108.00 FEET.
- 2) S00°36'23"E A DISTANCE OF 4.85 FEET.
- 3) N89°23'34"E A DISTANCE OF 62.22 FEET.
- 4) N00°41'57"W A DISTANCE OF 94.00 FEET.
- 5) S89°24'00"W A DISTANCE OF 62.07 FEET.
- 6) S00°36'23"E A DISTANCE OF 74.15 FEET.
- 7) S89°23'37"W A DISTANCE OF 108.00 FEET.
- 8) S00°36'23"E A DISTANCE OF 15.00 FEET TO THE POINT OF BEGINNING.



NW COR
 SEC 2 T2S, R7E
 FD COTTON SPINDLE



375 E ELLIOT RD. SUITE 14
 CHANDLER, AZ 85225
 WWW.AZBENCHMARK.COM



SCALE:
 1" = 40'
 SE 1/4
 SEC 2
 T. 2 S.
 R. 7 E.

EXHIBIT "A"

LEGAL DESCRIPTION

THE CUBES @ MESA GATEWAY

ABANDONMENT OF PUBLIC UTILITY FACILITY EASEMENT # 13

ABANDONMENT OF A PUBLIC UTILITY FACILITY EASEMENT LOCATED ON LOT 2 IN THE FINAL PLAT OF THE CUBES AT MESA GATEWAY RECORDED IN BOOK 1654, PAGE 15, MARICOPA COUNTY RECORDS (MCR) AND LOCATED IN THE WEST HALF OF SECTION 2, TOWNSHIP 2 SOUTH, RANGE 7 EAST OF THE GILA AND SALT RIVER MERIDIAN, CITY OF MESA, MARICOPA COUNTY, ARIZONA, MORE PARTICULARLY DESCRIBED AS FOLLOWS:

COMMENCING AT THE WEST QUARTER CORNER OF SAID SECTION (0.5" STEEL ROD) FROM WHICH POINT THE NORTHWEST CORNER (COTTON SPINDLE) THEREOF BEARS N00°36'23"W, A DISTANCE OF 2652.06 FEET;

THENCE N00°36'23"W, ALONG THE WEST LINE OF THE NORTHWEST QUARTER OF SAID SECTION, A DISTANCE OF 1843.18 FEET;

THENCE N89°23'37"E, ACROSS THE PROPOSED 65 FOOT RIGHT OF WAY, A DISTANCE OF 65.00 FEET TO THE POINT OF BEGINNING;

THENCE THE NEXT EIGHT (8) COURSES AND DISTANCES OVER SAID LOT:

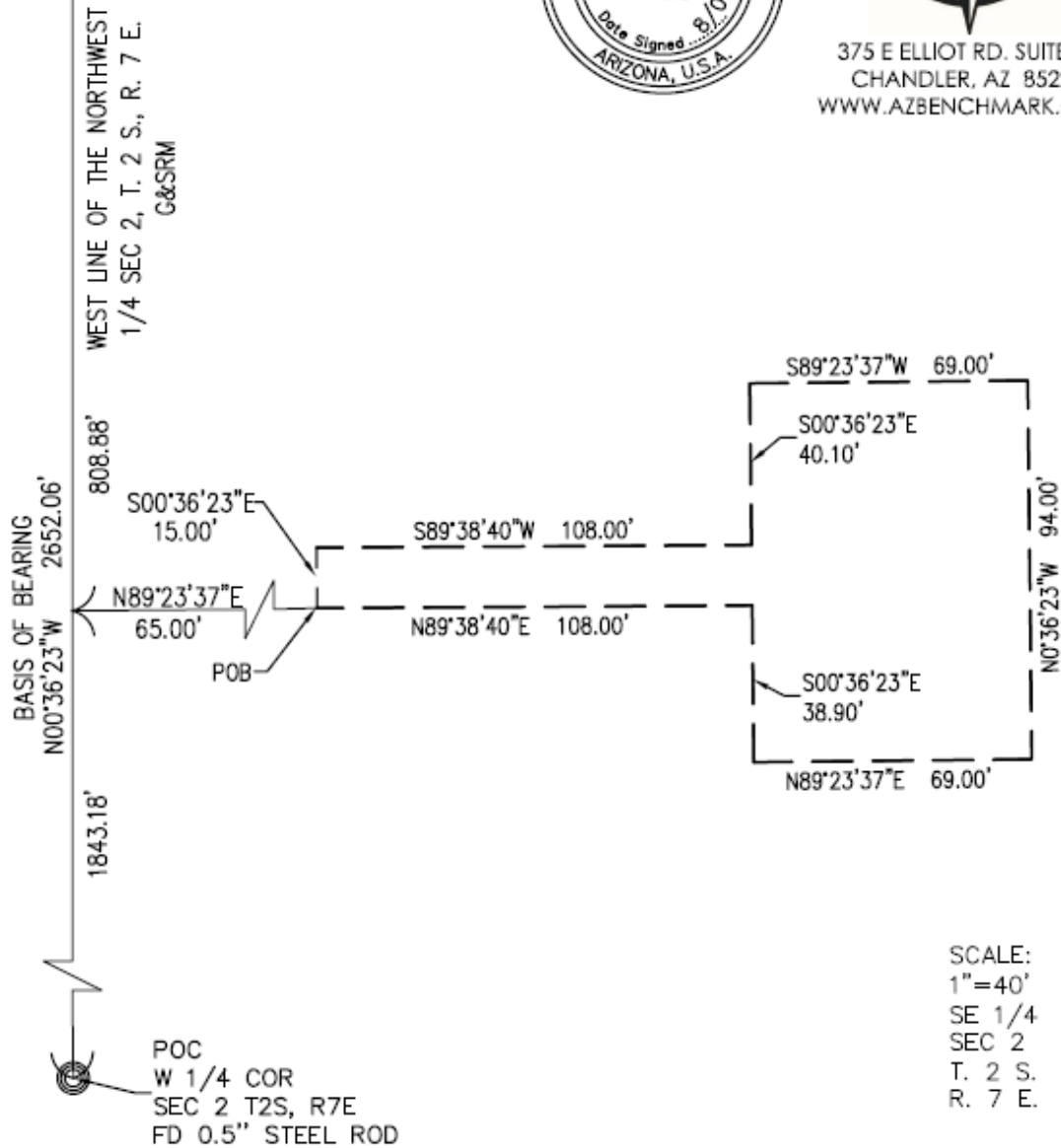
- 1) N89°38'40"E A DISTANCE OF 108.00 FEET.
- 2) S00°36'23"E A DISTANCE OF 38.90 FEET.
- 3) N89°23'37"E A DISTANCE OF 69.00 FEET.
- 4) N00°36'23"W A DISTANCE OF 94.00 FEET.
- 5) S89°23'37"W A DISTANCE OF 69.00 FEET.
- 6) S00°36'23"E A DISTANCE OF 40.10 FEET.
- 7) S89°38'40"W A DISTANCE OF 108.00 FEET.
- 8) S00°36'23"E A DISTANCE OF 15.00 FEET TO THE POINT OF BEGINNING.



NW COR
 SEC 2 T2S, R7E
 FD COTTON SPINDLE



375 E ELLIOT RD. SUITE 14
 CHANDLER, AZ 85225
 WWW.AZBENCHMARK.COM



SCALE:
 1"=40'
 SE 1/4
 SEC 2
 T. 2 S.
 R. 7 E.



EXHIBIT "A"

LEGAL DESCRIPTION

THE CUBES @ MESA GATEWAY

ABANDONMENT OF PUBLIC UTILITY FACILITY EASEMENT # 14

ABANDONMENT OF A PUBLIC UTILITY FACILITY EASEMENT LOCATED ON LOT 1 IN THE FINAL PLAT OF THE CUBES AT MESA GATEWAY RECORDED IN BOOK 1654, PAGE 15, MARICOPA COUNTY RECORDS (MCR) AND LOCATED IN THE WEST HALF OF SECTION 2, TOWNSHIP 2 SOUTH, RANGE 7 EAST OF THE GILA AND SALT RIVER MERIDIAN, CITY OF MESA, MARICOPA COUNTY, ARIZONA, MORE PARTICULARLY DESCRIBED AS FOLLOWS:

COMMENCING AT THE WEST QUARTER CORNER OF SAID SECTION (0.5" STEEL ROD) FROM WHICH POINT THE NORTHWEST CORNER (COTTON SPINDLE) THEREOF BEARS N00°36'23"W, A DISTANCE OF 2652.06 FEET;

THENCE N00°36'23"W, ALONG THE WEST LINE OF THE NORTHWEST QUARTER OF SAID SECTION, A DISTANCE OF 2155.34 FEET;

THENCE N89°23'37"E, ACROSS THE PROPOSED 65 FOOT RIGHT OF WAY, A DISTANCE OF 75.00 FEET TO THE POINT OF BEGINNING;

THENCE THE NEXT EIGHT (8) COURSES AND DISTANCES OVER SAID LOT:

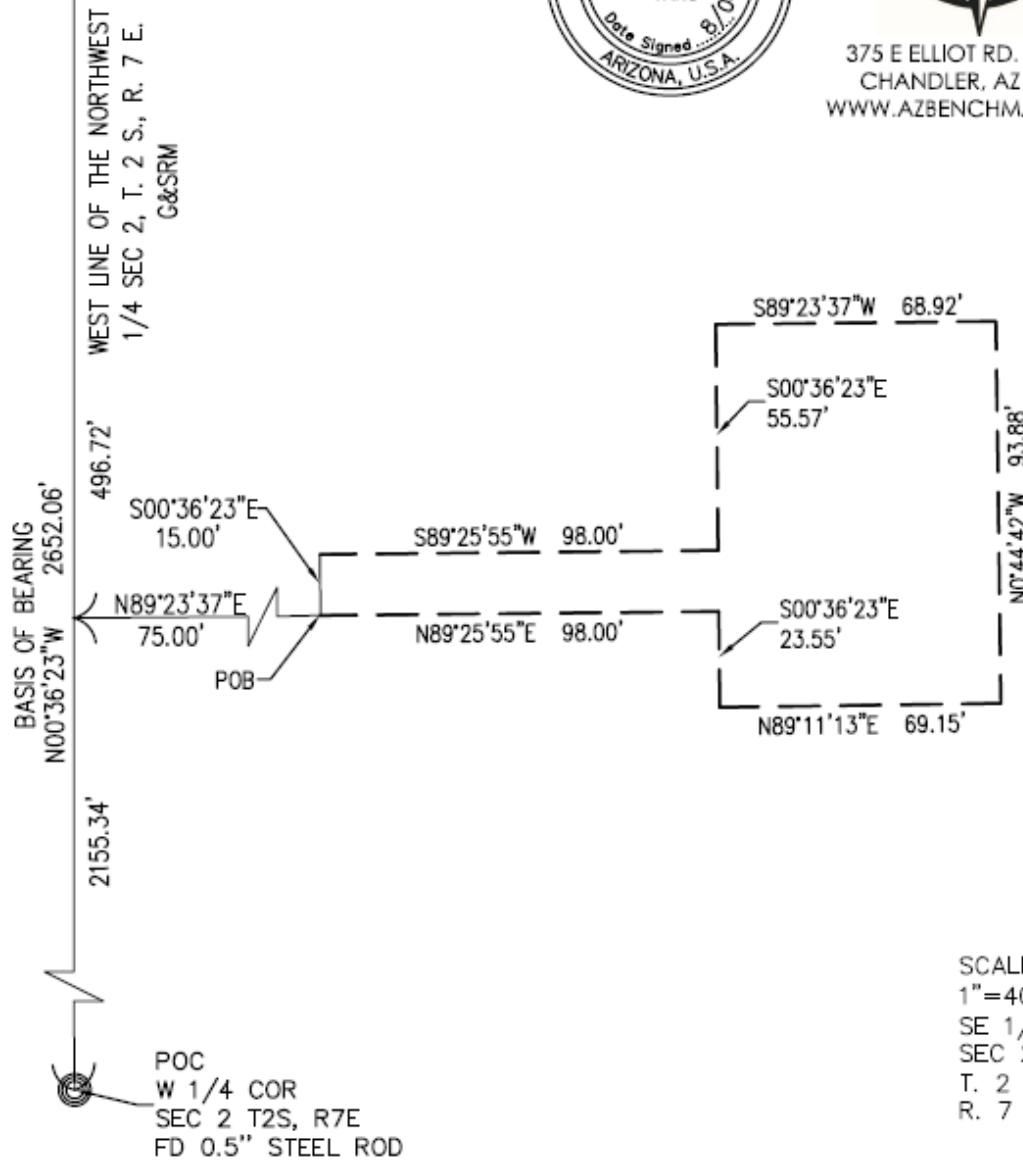
- 1) N89°25'55"E A DISTANCE OF 98.00 FEET.
- 2) S00°36'23"E A DISTANCE OF 23.55 FEET.
- 3) N89°11'13"E A DISTANCE OF 69.15 FEET.
- 4) N00°44'42"W A DISTANCE OF 93.88 FEET.
- 5) S89°23'37"W A DISTANCE OF 68.92 FEET.
- 6) S00°36'23"E A DISTANCE OF 55.57 FEET.
- 7) S89°25'55"W A DISTANCE OF 98.00 FEET.
- 8) S00°36'23"E A DISTANCE OF 15.00 FEET TO THE POINT OF BEGINNING.



NW COR
 SEC 2 T2S, R7E
 FD COTTON SPINDLE



375 E ELLIOT RD. SUITE 14
 CHANDLER, AZ 85225
 WWW.AZBENCHMARK.COM



SCALE:
 1" = 40'
 SE 1/4
 SEC 2
 T. 2 S.
 R. 7 E.



EXHIBIT "A"

LEGAL DESCRIPTION

THE CUBES @ MESA GATEWAY

ABANDONMENT OF PUBLIC UTILITY FACILITY EASEMENT # 15

ABANDONMENT OF A PUBLIC UTILITY FACILITY EASEMENT LOCATED ON LOT 1 IN THE FINAL PLAT OF THE CUBES AT MESA GATEWAY RECORDED IN BOOK 1654, PAGE 15, MARICOPA COUNTY RECORDS (MCR) AND LOCATED IN THE WEST HALF OF SECTION 2, TOWNSHIP 2 SOUTH, RANGE 7 EAST OF THE GILA AND SALT RIVER MERIDIAN, CITY OF MESA, MARICOPA COUNTY, ARIZONA, MORE PARTICULARLY DESCRIBED AS FOLLOWS:

COMMENCING AT THE WEST QUARTER CORNER OF SAID SECTION (0.5" STEEL ROD) FROM WHICH POINT THE NORTHWEST CORNER (COTTON SPINDLE) THEREOF BEARS N00°36'23"W, A DISTANCE OF 2652.06 FEET;

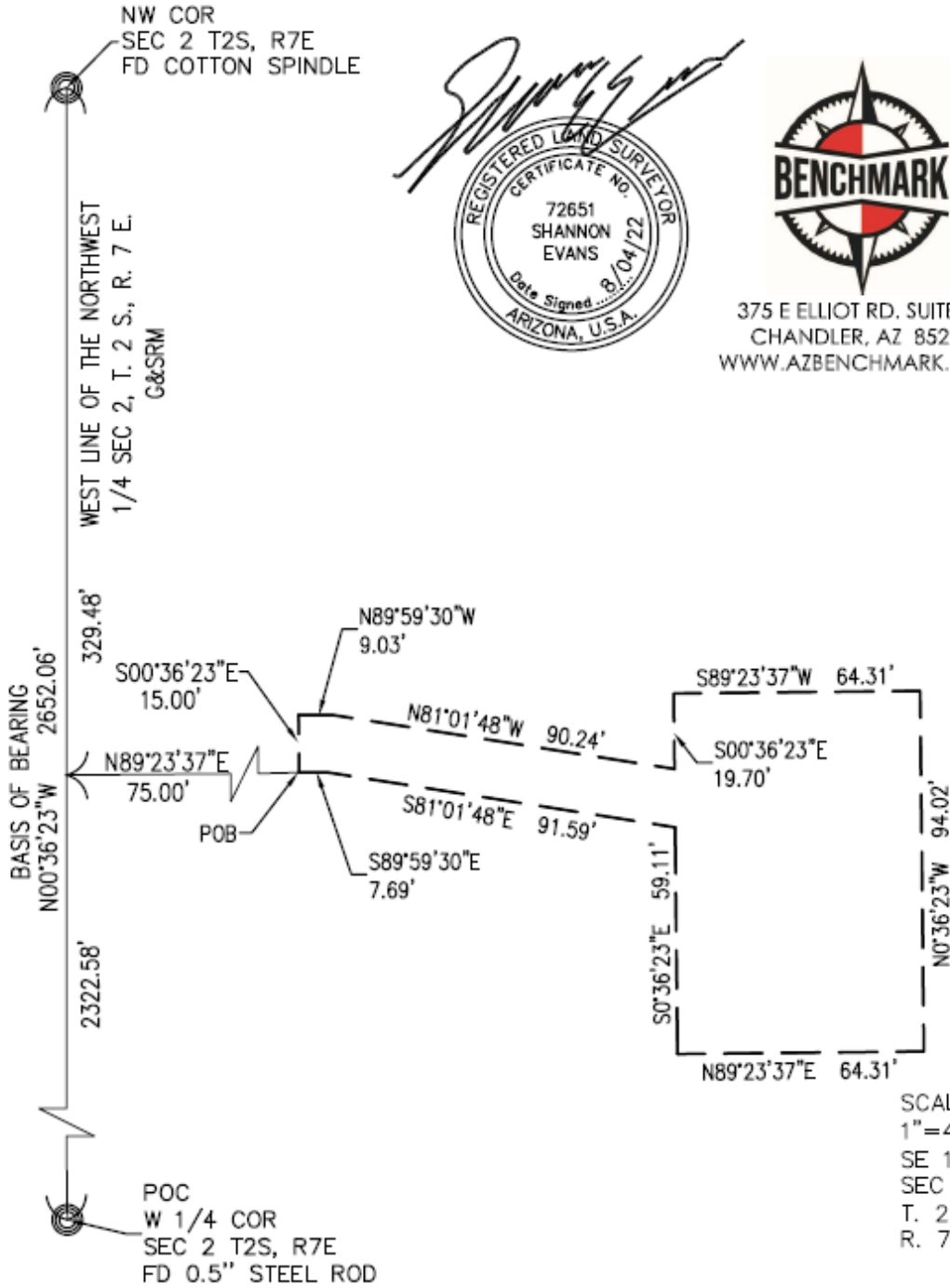
THENCE N00°36'23"W, ALONG THE WEST LINE OF THE NORTHWEST QUARTER OF SAID SECTION, A DISTANCE OF 2322.58 FEET;

THENCE N89°23'37"E, ACROSS THE PROPOSED 65 FOOT RIGHT OF WAY, A DISTANCE OF 75.00 FEET TO THE POINT OF BEGINNING;

THENCE THE NEXT TEN (10) COURSES AND DISTANCES OVER SAID LOT:

- 1) S89°59'30"E A DISTANCE OF 7.69 FEET.
- 2) S81°01'48"E A DISTANCE OF 91.59 FEET.
- 3) S00°36'23"E A DISTANCE OF 59.11 FEET.
- 4) N89°23'37"E A DISTANCE OF 64.31 FEET.
- 5) N00°36'23"W A DISTANCE OF 94.02 FEET.
- 6) S89°23'37"W A DISTANCE OF 64.31 FEET.
- 7) S00°36'23"E A DISTANCE OF 19.70 FEET.
- 8) N81°01'48"W A DISTANCE OF 90.24 FEET.
- 9) N89°59'30"W A DISTANCE OF 9.03 FEET.
- 10) S00°36'23"E A DISTANCE OF 15.00 FEET TO THE POINT OF BEGINNING.





375 E ELLIOT RD. SUITE 14
 CHANDLER, AZ 85225
 WWW.AZBENCHMARK.COM

SCALE:
 1" = 40'
 SE 1/4
 SEC 2
 T. 2 S.
 R. 7 E.

