



# FEES AND CHARGES RECOMMENDATIONS

---

Audit, Finance, and Enterprise Committee

---

Presenters: Kristi Griffin – Operations Budget Coordinator  
Samuel Schultz – Assistant Director, Management and Budget

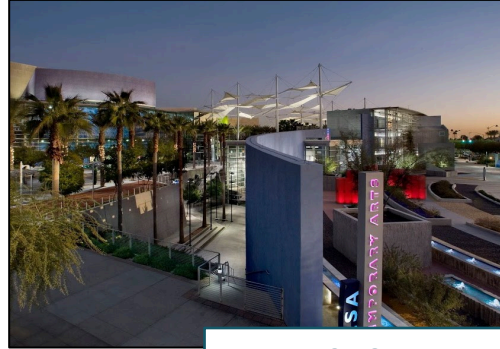
April 7, 2025



# *FEES AND CHARGES PROCESS AND RECOMMENDATION*

- Market comparisons conducted
- Cost of providing service and applicability of fee evaluated
- Full listing of recommended adjustments, additions, and deletions are included in the report
- Proposed effective date: July 1, 2025
- Estimated impact on revenue of all recommendations is an increase of \$515,539

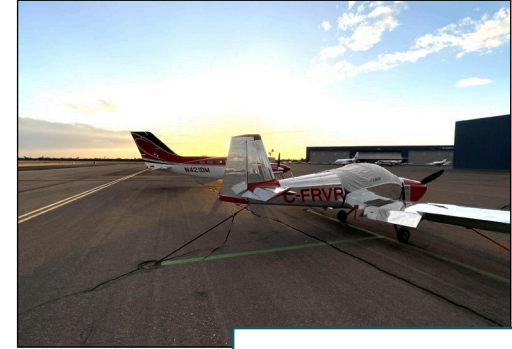
# DEPARTMENTS RECOMMENDING MODIFICATIONS



Arts & Culture



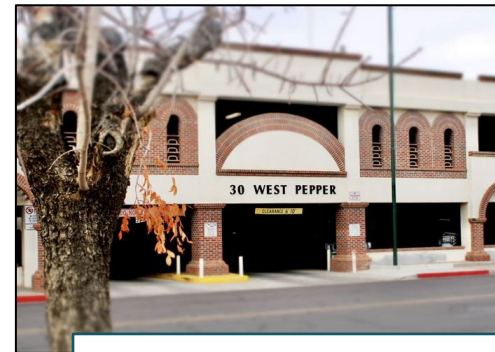
Development Services



Falcon Field



Municipal Court



Office of Urban Transformation



# ARTS & CULTURE



## RECOMMENDATION

- **Increase** Mesa Arts Center theaters Facility Use Fees by 5% to partially offset increasing costs of operations and building maintenance
- **Replace** Mesa Contemporary Arts (Lecture Hall) 4-hour and 8-hour period Facility Use Fees with:
  - Hourly \$100
  - Daily \$600
- **Increase** maximum of range for Ticket Handling Fee from \$7.00 to \$8.50
- **Increase** Mesa Contemporary Arts proposal fees from \$25 to \$50 per submission
- **Update** name from i.d.e.a. Museum to idea Museum
- **Update** name of Mesa Grande Cultural Park to Sce:dagĩ Mu:val Va'aki to reflect name change effective November 2024

**Total Estimated Fiscal Impact: \$136,299**



# *DEVELOPMENT SERVICES*

# *RECOMMENDATION*

- *Updates* to Development Services Fees
  - Removing retired impacts fees from the Utility Service Fee
- *Updates* to Planning Service Fees
  - Updating Annexation Equity Fee language
  - Modifying the “Zoning Administration Application Fees” fee category to “Pre-Plat”
  - Clarifying Zoning Designations exempt from fees
  - Standardizing language in the Fee Schedule
  - Adding Adaptive Reuse Permit Fee of \$1,000 per submission
    - Fiscal Impact: \$6,000

Total Estimated Fiscal Impact: \$6,000



# FALCON FIELD



## RECOMMENDATION

- Federal Aviation Administration (FAA) requires the City to make the Airport as financially self-sustaining as possible to receive federal grants
- **Increase** Hangar, Tie Down, and Storage Room rent by 8% for the next 3 years due to the following factors:
  - Inflationary cost increases in construction over the past 5 years
  - Current rental rates do not generate enough revenue to maintain the aircraft pavement in a safe condition
  - Revenue generated from long-term ground leases is currently subsidizing the cost to maintain pavement used exclusively by the City-owned hangar and tie down tenants
  - Fiscal Impact: \$141,996
- **New** Transfer Fee for Storage Room \$100 and Tie Downs \$50
  - Fiscal Impact: \$150

# FALCON FIELD



## RECOMMENDATION

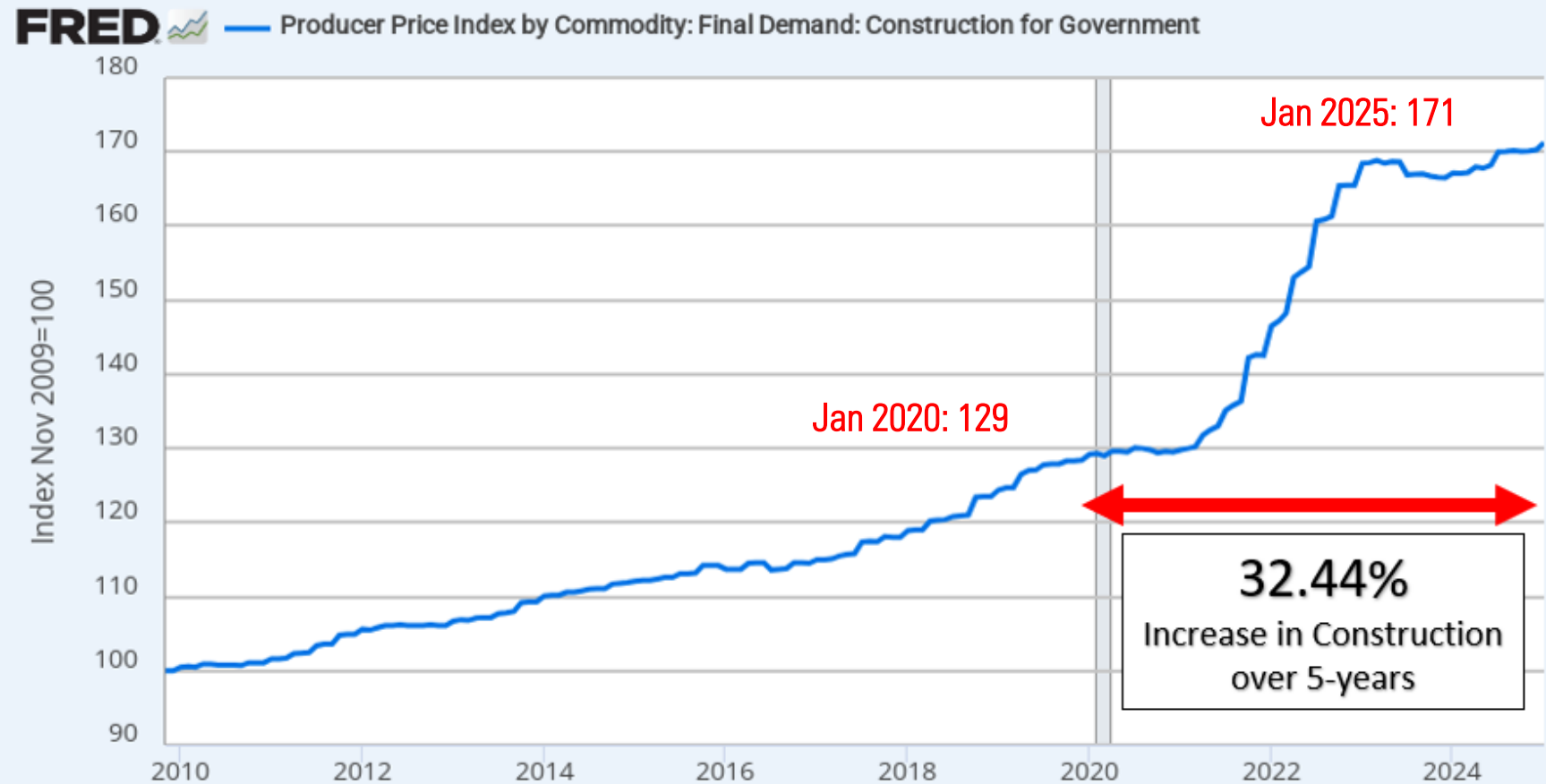
- ***Increase*** Hangar Transfer Fee
  - Tiered Rate depending on size of Hangar
  - Fiscal Impact: \$500
- ***Update*** Hangar Cleaning Deposit to Security Deposit
  - Tiered rate depending on size
  - Fiscal Impact: \$332
- ***Update*** Storage Room Security Deposit
- ***Replace*** Wait List fee with Application fee
  - Combined into one Facility Application fee (non-refundable and not applied to first month's rent)
  - Fiscal Impact: \$16,100
- Effective August 1, 2025

**Total Estimated Fiscal Impact: \$160,819**



# FALCON FIELD

## ST. LOUIS FEDERAL RESERVE PRODUCER PRICE INDEX GOVERNMENT CONSTRUCTION PRICE INDEX 2009-2025



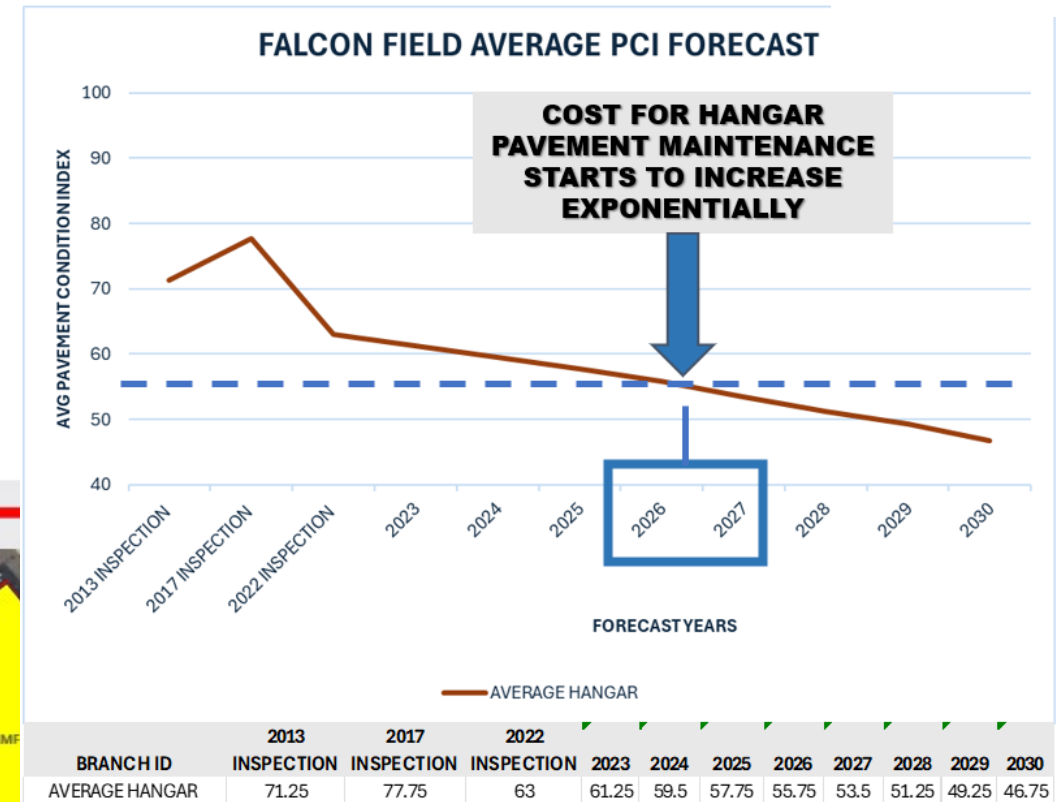
Source: U.S. Bureau of Labor Statistics via FRED®  
*Shaded areas indicate U.S. recessions.*

[myf.red/g/1E0dz](https://myf.red/g/1E0dz)



# FALCON FIELD

## 2022 FALCON FIELD AIRPORT PAVEMENT MANAGEMENT REPORT



Source: 2022 Falcon Field Airport Pavement Management Report, Applied Pavement Technology

# *MUNICIPAL COURT*



# *RECOMMENDATION*

- ***New*** Court Monitoring Fee
  - As outlined by proposed new Mesa Ordinance City Code Section 1-12-10 entitled "Court Monitoring Fee"
  - New fee for individuals sentenced to probation, or convicted of driving under the influence (DUI) \$70

Total Estimated Fiscal Impact: \$150,381



## *OFFICE OF URBAN TRANSFORMATION*

# *RECOMMENDATION*

- *Increase* Permitted Parking Rates
  - Increase for all monthly permitted parking spaces within City-owned parking garages and surface parking lots \$5/month
  - Includes surface parking, garage (shaded), and garage (unshaded roof and below grade)

Total Estimated Fiscal Impact: \$62,040

# *ADMINISTRATIVE FEE UPDATE*

## *RECOMMENDATION*

- *Moving* Federal & State Environmental Compliance Fee from Solid Waste Department to Environmental & Sustainability Department

Total Estimated Fiscal Impact: \$0







# *NEXT STEPS*

City Council to consider proposed fees and charges amendments on **June 16, 2025**.

If approved by City Council, fee & charges adjustments are effective **July 1, 2025**.



mesa·az