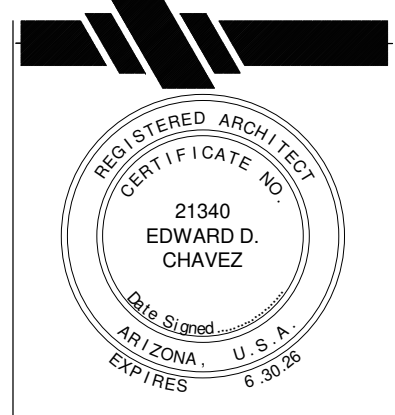


NOTES

1. ADA BATHROOM
2. OFFICE
3. 16'-0" CLG.
4. STEEL COLUMN-SEE STRUCTURAL PLANS, TYP.
5. 800 S.E.S. 5 PAC 3DIA.
6. METAL STUDS INTERIOR
7. GARAGE DOORS 14'-0" HIGH
8. 4 EVAP UNITS
9. 4 MIN SPLITS @ OFFICE
10. FIRE RESISTIVE PLUMBING PLANS
11. FLOOR LOCATION
12. PROVIDE LAYER OF 5/8" TYPE X GYPSUM WALLBOARD ON ALL WALLS AND CEILING OF UTILITY (F.D.C.) MECH. RMs. USE R-13 WALLS & R-38 CEILING BATT INSULATION
13. HIGH UNDOCS
14. PRE-FABRICATED METAL SHADE AWNINGS
15. TEMPERED GLASS UNIT
16. WINDOW ASSEMBLIES TO BE RATED TO MEET SECTION 761 OF IBC
17. DOOR ASSEMBLIES SHALL MEET MINIMUM REQUIREMENTS PER SECTION 765 OF IBC FOR HOUR RATED CONSTRUCTION
18. DOORS AN ACCESSIBLE ENTRANCE PER ACCESSIBLE SIDEWALK HARDWARE SHALL ALSO MEET ACCESSIBLE REQUIREMENTS

NOTES:

1. ADA BATHROOM
2. OFFICE
3. 16'-0" CLG.
4. STEEL COLUMN
5. 800 S.E.S. 5 PAC 3DIA.
6. METAL STUDS INTERIOR
7. GARAGE DOORS @ 14'-0" HGH
8. 4 EVAP UNITS
9. 4 MIN SPLITS @ OFFICE



CHAVEZ ASSOCIATES RETAINS ALL RIGHTS OF OWNERSHIP TO THIS DESIGN INCLUDING, BUT NOT LIMITED TO, THE RIGHT TO REUSE OR REPRODUCE ANY PART OF THIS DESIGN AND/OR DESIGN DOCUMENTS IN ANY MANNER WITHOUT THE WRITTEN CONSENT OF CHAVEZ ASSOCIATES. THESE DOCUMENTS ARE VALID ONLY IF THE SIGNATURE OF THE ARCHITECT IS PRESENT.

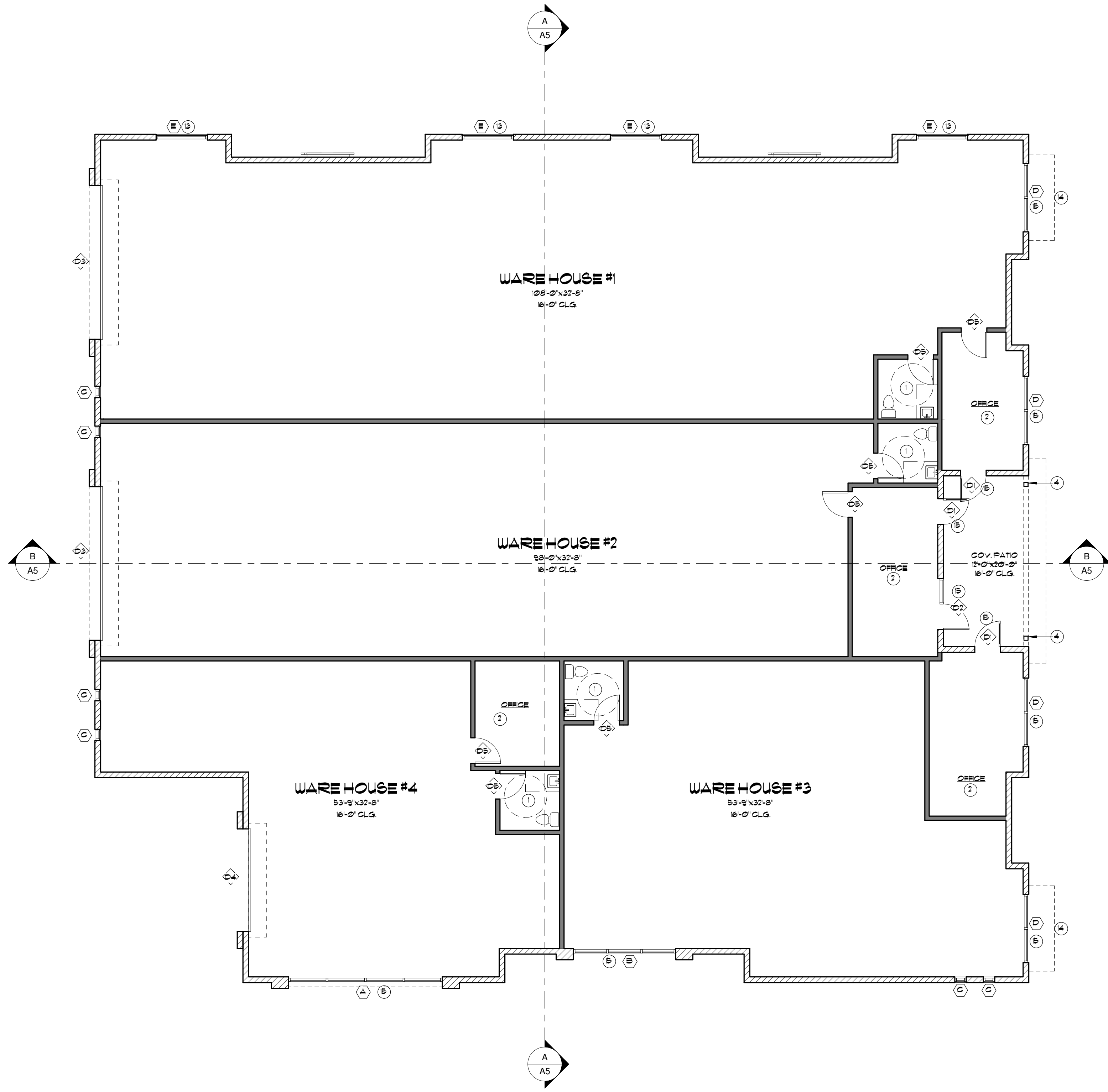
GLEN SCOTT LLC
1762 S. ATWOOD, MESA, AZ

EDWARD D. CHAVEZ
AIA, ARCHITECT
(602) 982-9600

CHAVEZ • AIA
ARCHITECTURE • DEVELOPMENT • COMMERCIAL • RESIDENTIAL • INTERIOR DESIGN
4720 EAST CHOLLA STREET PHOENIX, ARIZONA
602-483-9711 / 982-8800 / EMAIL: ECHAVEZ@ECHAVEZ.NET
SINCE 1972

BUILDING SQ. FTG.

| | | |
|---------------|------------|-------------------|
| WAREHOUSE #1 | FOOTPRINT: | 3,565 S.F. |
| WAREHOUSE #2 | FOOTPRINT: | 2,762 S.F. |
| WAREHOUSE #3 | FOOTPRINT: | 1,650 S.F. |
| WAREHOUSE #4 | FOOTPRINT: | 2,007 S.F. |
| TOTAL: | | 9,984 S.F. |



MAIN FLOOR PLAN

1/8" = 1'-0"

DOOR SCHEDULE

| DOOR NUMBER | FIRE RATING | DOOR DATA | | | FRAME DATA | | | | REMARKS | QTY |
|-------------|-------------|-----------|--------|--------|-------------|----------|------------|---|---------|-----|
| | | FINISH | WIDTH | HEIGHT | MAX. FACTOR | MAX. GLC | GLASS TYPE | GLASS | | |
| ① | NR | 3'-0" | 8'-0" | - | - | - | ALUMINUM | GLASS-TEMPERED | | 3 |
| ② | NR | 6'-0" | 8'-0" | - | - | - | ALUMINUM | 3'-0" GLASS DOOR w/ 3'-0" SDELIGHT-TEMPERED | | 1 |
| ③ | NR | 18'-0" | 14'-0" | - | - | - | ALUMINUM | GARAGE DOOR | | 2 |
| ④ | NR | 12'-0" | 14'-0" | - | - | - | ALUMINUM | GARAGE DOOR | | 1 |
| ⑤ | NR | 3'-0" | 8'-0" | - | - | - | ALUMINUM | | | 1 |

* PASSAGE HARDWARE w/ DEADBOLT DEADBOLT TO REMAIN UNLOCKED DURING BUSINESS HOURS. PROVIDE SELF-CLOSURE FRONT DOORS WILL HAVE THIS EXCEPT w/ HARDWARE PER PHOTO

- FR/VADY LOCK
- ▲ PASSAGE w/ PANIC HARDWARE
- PASSAGE
- ◆ PUSH AND PULL DOOR PLATES

WINDOW SCHEDULE

| WINDOW NUMBER | WINDOW SIZE | GLASS TYPE | MAX. U-FACTOR | MAX. SHGC | REMARKS | QUANTITY |
|---------------|---------------|------------|---------------|-----------|-------------------|----------|
| ① | 8'-0" x 2'-0" | NBL | 0.40 | 0.35 | FIXED-TEMPERED | 1 |
| ② | 2'-0" x 2'-0" | NBL | 0.40 | 0.35 | FIXED-TEMPERED | 1 |
| ③ | 14' x 8'-0" | NBL | 0.40 | 0.35 | FIXED | 6 |
| ④ | 8'-0" x 8'-0" | NBL | 0.40 | 0.35 | FIXED-TEMPERED | 4 |
| ⑤ | 8'-0" x 2'-0" | NBL | 0.40 | 0.35 | FIXED-HIGH WINDOW | 4 |

| | |
|------|-----------|
| DATE | layout |
| DATE | revisions |

JOB NUMBER

SHEET DESCRIPTION
MAIN FLOOR PLAN

DATE
JANUARY 23, 2025

