



# Design Review Board



# DRB23-00014

# Power Retail Development

Charlotte Bridges, Planner II

August 13, 2024



# Request

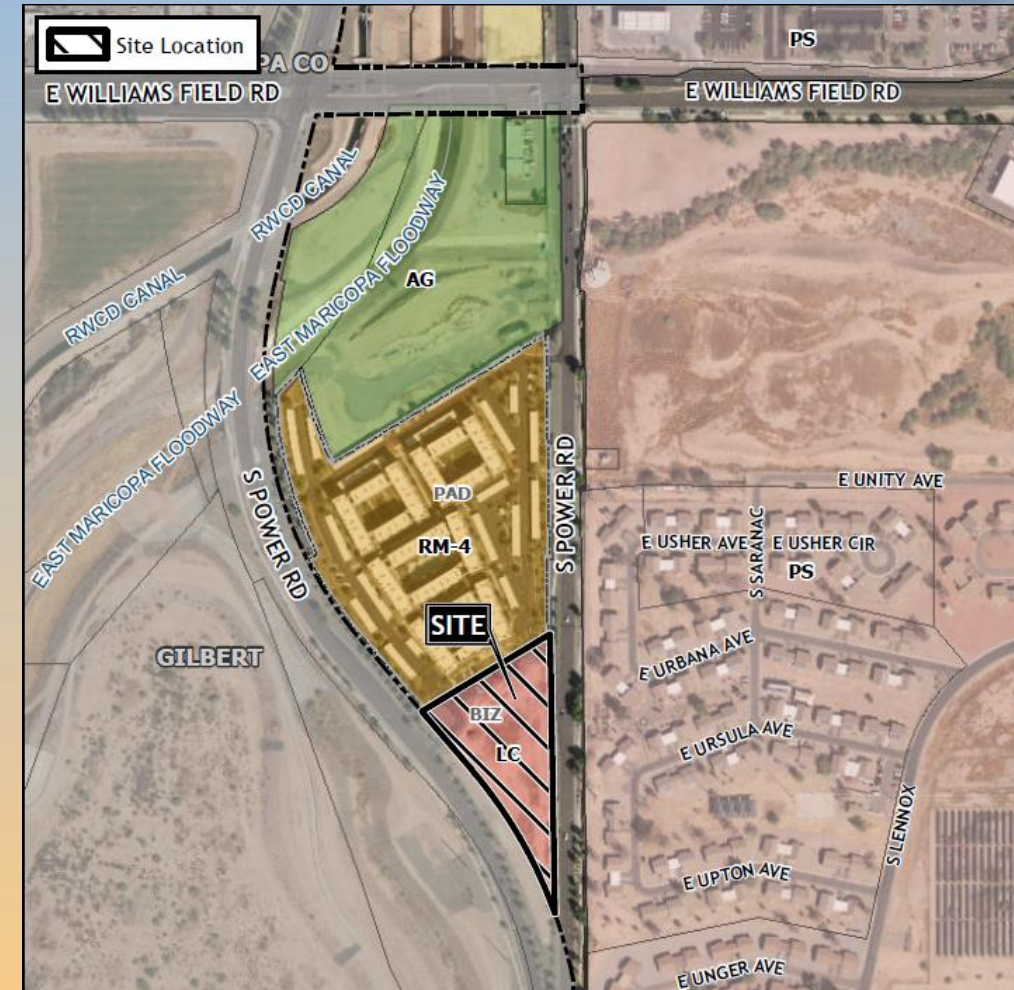
- Design Review
- To allow for commercial building with a drive-thru facility





# Location

- 6209 South Power Road
- South of Williams Field Road
- Between the northbound and southbound lanes of Power Road





# Site Photo



Looking east from southbound Power Road



# Site Photo

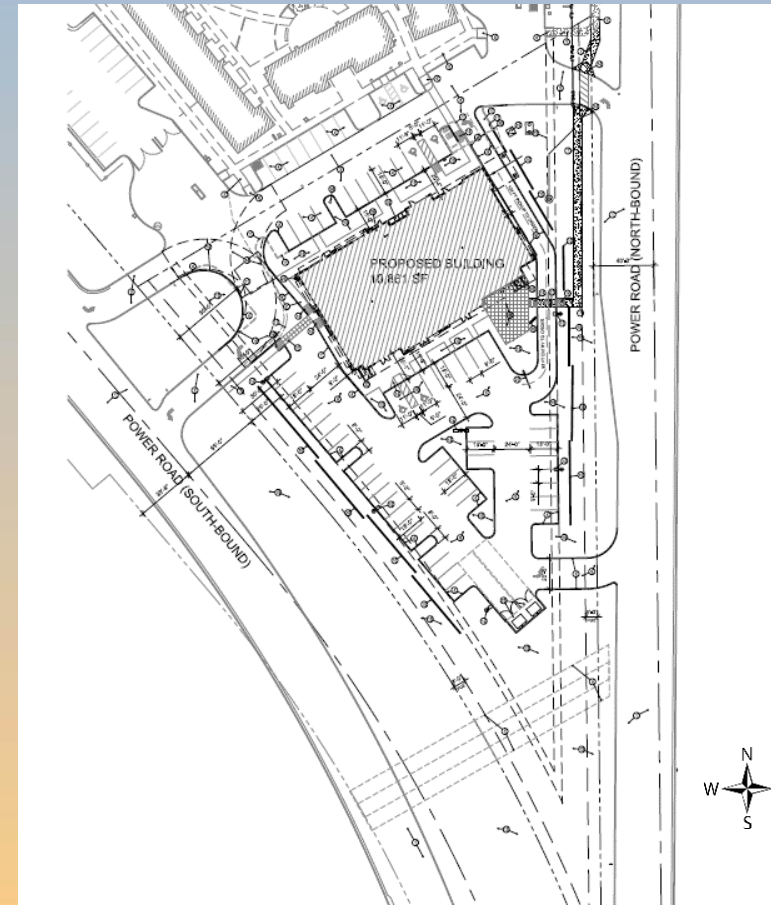


Looking northwest from southbound Power Road



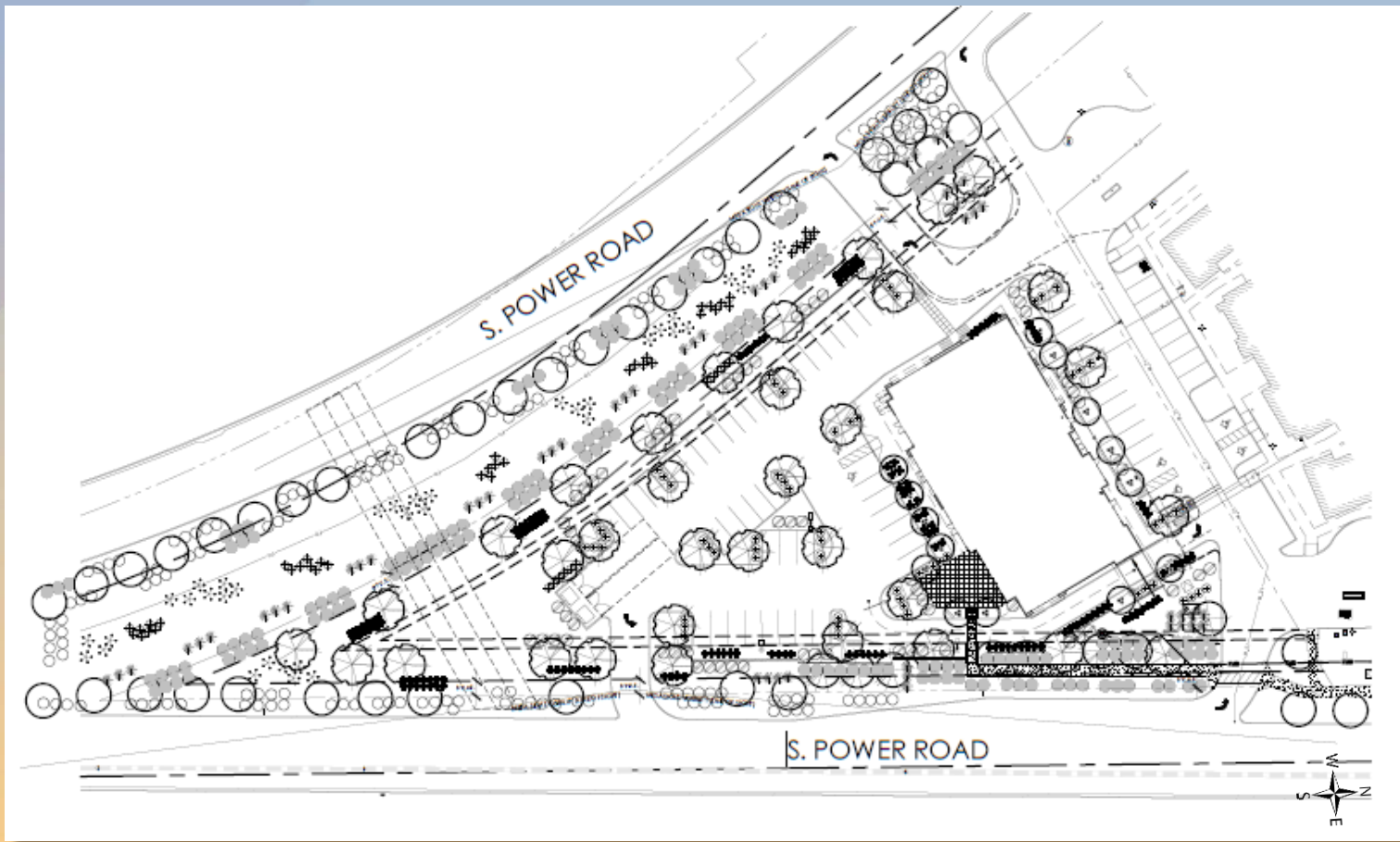
# Site Plan

- 10,861 square foot, multi-tenant building
- Drive-thru lane
- Access from southbound and northbound Power Road
- 61 parking spaces provided





# Landscape Plan



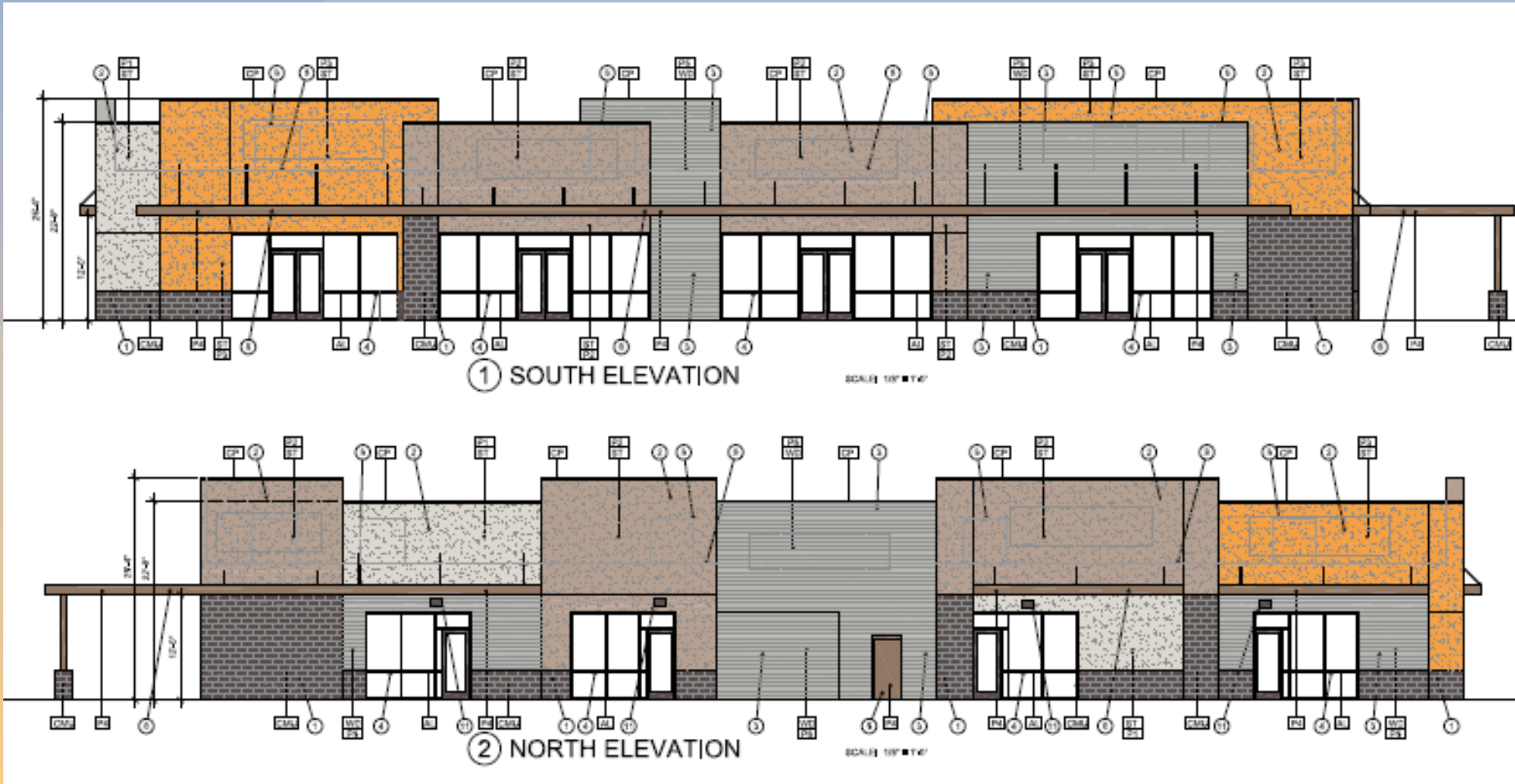
### LANDSCAPE LEGEND

	EXISTING TREE PROTECT FROM CONSTRUCTION		AGAVE DESMETIANA SMOOTH AGAVE 5 GALLON (52)
	EXISTING SHRUB PROTECT FROM CONSTRUCTION		MILLENERGIA 'REGAL MIST' REGAL MIST DEER GRASS 5 GALLON (143)
	CERCIDIUM HYBRID/ DESERT MUSEUM PALO VERDE 24" BOX (34)		EREMOPHILA MACULATA 'VALENTINE EMU BUSH' 5 GALLON (80)
	DALBERGIA SESOO SESOO TREE 24" BOX (18)		HESPERALOE PARVIFLORA RED YUCCA 5 GALLON (52)
	CAESALPYNIA CACALACO CASCALOTE 24" BOX (14)		CAESALPYNIA MEDICANA MEXICAN BIRD OF PARADISE 5 GALLON (37)
	EREMOPHILA GLABRA 'MINGENW GOLD' 5 GALLON (172)		1/2" SCREENED IRWING SLATE DECOMPOSED GRANITE 2" DEPTH IN ALL LANDSCAPE AREAS
	TRICOMA STANS YELLOW BELLS 5 GALLON (87)		





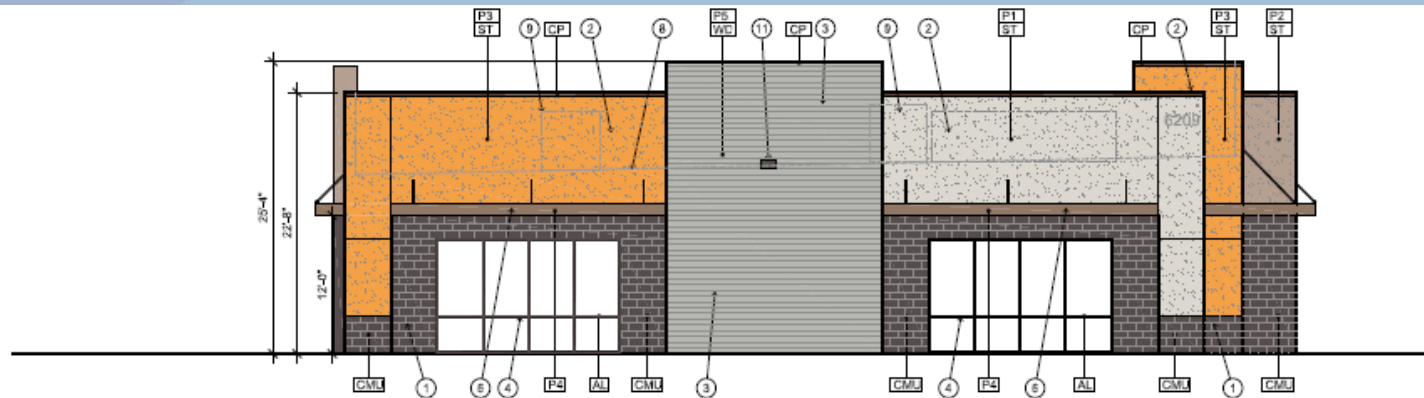
# Elevations



<u>SOUTH ELEVATION</u>		
TOTAL FACADE	3,428 SF	
STUCCO	1,453 SF	42.39%
WOOD SIDING	711 SF	20.74%
CMU	259 SF	7.56%
GLASS (STOREFRONT)	870 SF	25.38%
METAL CANOPY	135 SF	3.93%
<u>NORTH ELEVATION</u>		
TOTAL FACADE	3,453 SF	
STUCCO	1,616 SF	46.80%
WOOD SIDING	788 SF	22.82%
CMU	444 SF	12.86%
GLASS (STOREFRONT)	480 SF	13.90%
HM DOOR	21 SF	0.61%
METAL CANOPY	104 SF	3.01%
<u>WEST ELEVATION</u>		
TOTAL FACADE	1,953 SF	
STUCCO	749 SF	38.35%
WOOD SIDING	475 SF	24.32%
CMU	349 SF	17.88%
GLASS (STOREFRONT)	320 SF	16.38%
METAL CANOPY	60 SF	3.07%
<u>EAST ELEVATION</u>		
TOTAL FACADE	1,846 SF	
STUCCO	534 SF	28.90%
WOOD SIDING	680 SF	36.80%
CMU	400 SF	21.64%
GLASS (STOREFRONT)	182 SF	9.85%
METAL CANOPY	52 SF	2.81%

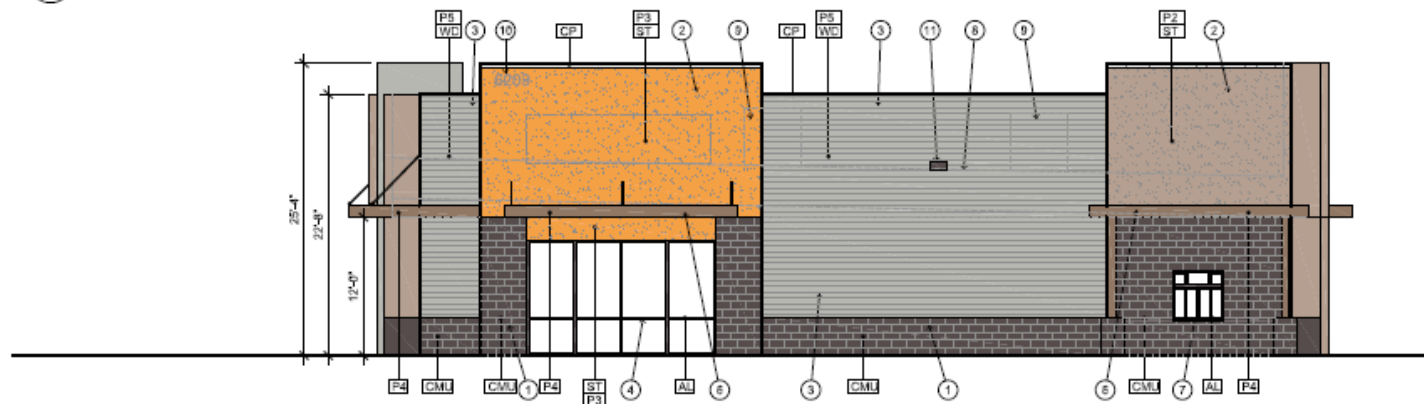


# Elevations



③ WEST ELEVATION

SCALE: 1/8" = 1'-0"



④ EAST ELEVATION

SCALE: 1/8" = 1'-0"

<u>SOUTH ELEVATION</u>		
TOTAL FACADE	3,428 SF	
STUCCO	1,453 SF	42.39%
WOOD SIDING	711 SF	20.74%
CMU	259 SF	7.56%
GLASS (STOREFRONT)	870 SF	25.38%
METAL CANOPY	135 SF	3.93%
<u>NORTH ELEVATION</u>		
TOTAL FACADE	3,453 SF	
STUCCO	1,616 SF	46.80%
WOOD SIDING	788 SF	22.82%
CMU	444 SF	12.86%
GLASS (STOREFRONT)	480 SF	13.90%
HM DOOR	21 SF	0.61%
METAL CANOPY	104 SF	3.01%
<u>WEST ELEVATION</u>		
TOTAL FACADE	1,953 SF	
STUCCO	749 SF	38.35%
WOOD SIDING	475 SF	24.32%
CMU	349 SF	17.88%
GLASS (STOREFRONT)	320 SF	16.38%
METAL CANOPY	60 SF	3.07%
<u>EAST ELEVATION</u>		
TOTAL FACADE	1,846 SF	
STUCCO	534 SF	28.90%
WOOD SIDING	680 SF	36.80%
CMU	400 SF	21.64%
GLASS (STOREFRONT)	182 SF	9.85%
METAL CANOPY	52 SF	2.81%



# Colors and Materials



**CMU**  
OldCastle-Echelon Smooth CMU  
Precision-Black Canyon



**P1**  
Sherwin Williams  
Drift of Mist SW9166



**P4**  
PPG Paints  
Bark 1007-7



**P5**  
Sherwin Williams  
Gray Clouds SW7658



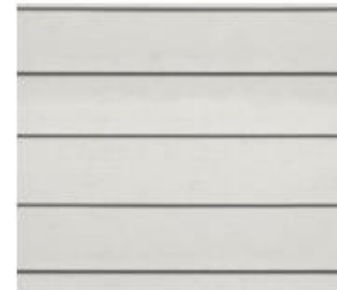
**P2**  
PPG Paints  
Nut Shell 14-02



**P3**  
PPG Paints  
Comucopia 1203-7



**CP**  
Metal Coping  
Burnished Slate



**WD**  
Allura Lap Siding  
Painted P5 – Gray Clouds SW7658



# Renderings





# Renderings





# Findings

Staff is seeking your review and recommendation on the following:

- ✓ Proposed building elevations and landscape design

***Staff welcomes any feedback***



# Design Review Board