

City of Mesa

Design Review Board

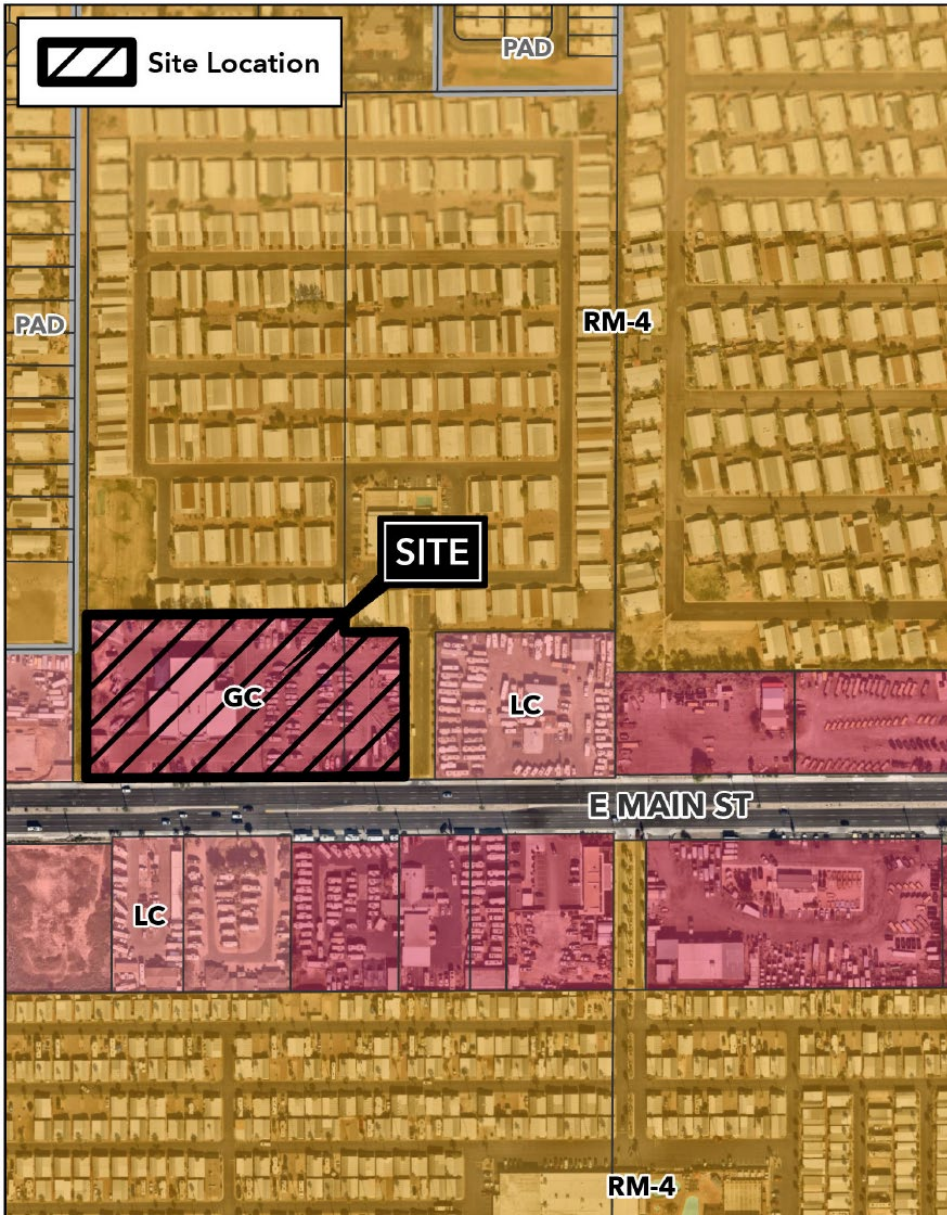
DRB25-00979
Century Marine

Sergio Solis, Planner I
Kellie Rorex, Senior Planner



Request

- Design Review for Alternative Compliance
- 20,400 ± square foot expansion to an existing Vehicle Sales and Service Facility



Location

- 3302 East Main Street
- 4± acre parcel
- North side of Main Street between Lindsay Road and Val Vista Drive



Site Photo



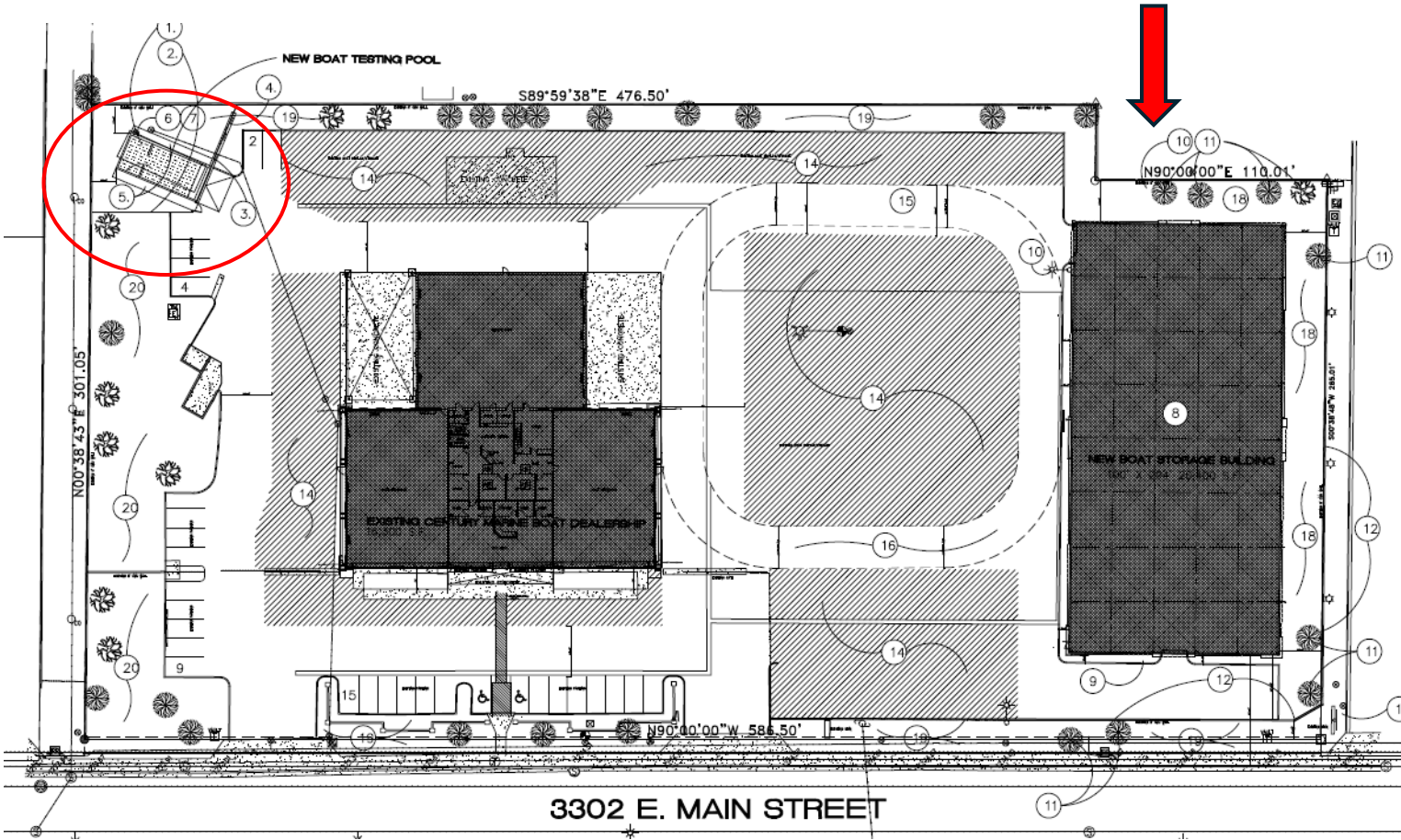
Looking north toward the site



Site Photo

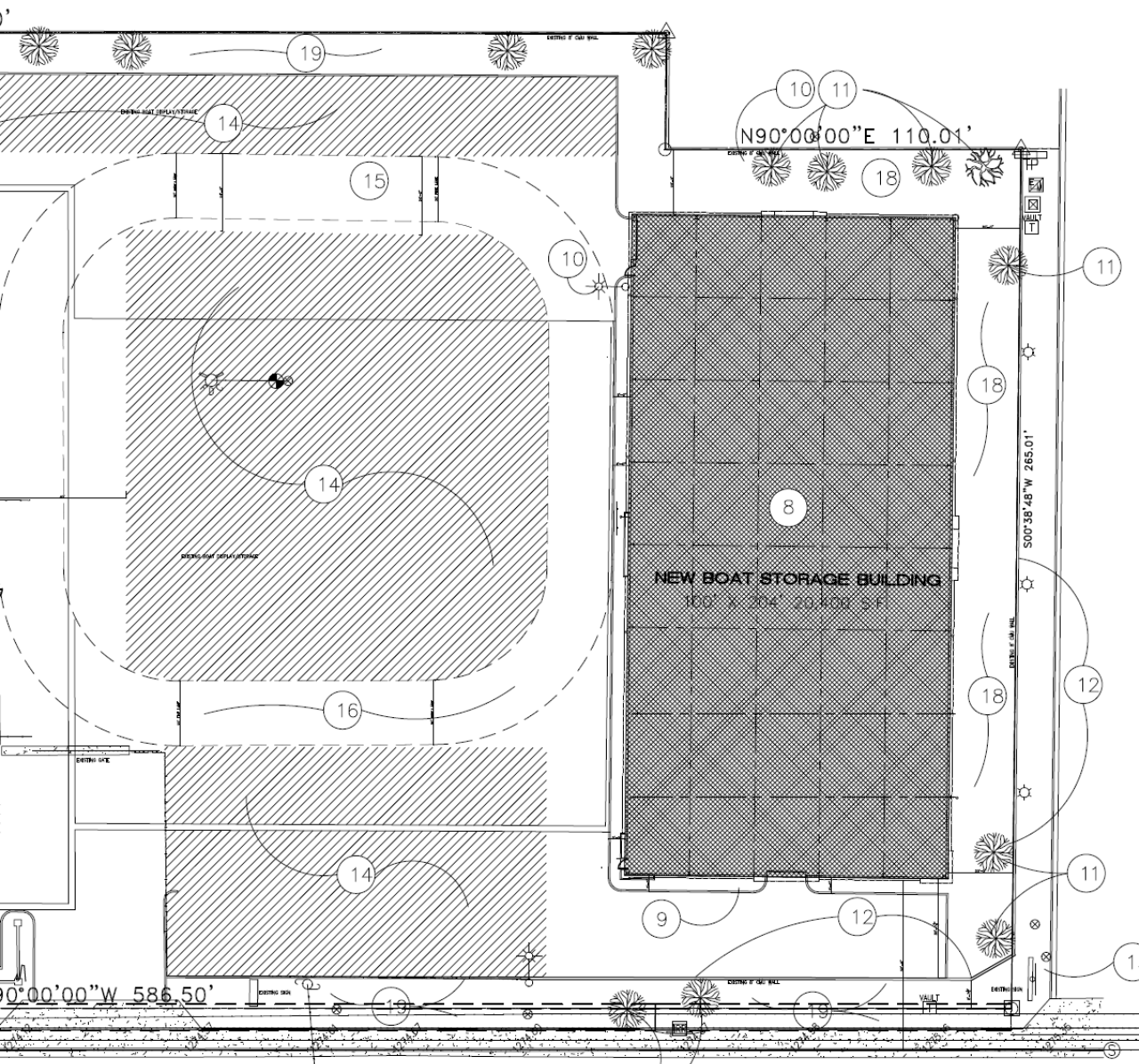


Looking west towards the site (eastern property boundary/Cypress Ln.)



Site Plan

- New 20,400 ± SF accessory building;
- Existing in-ground boat testing facility



Landscape Plan

- New 20' landscape yards adjacent to building

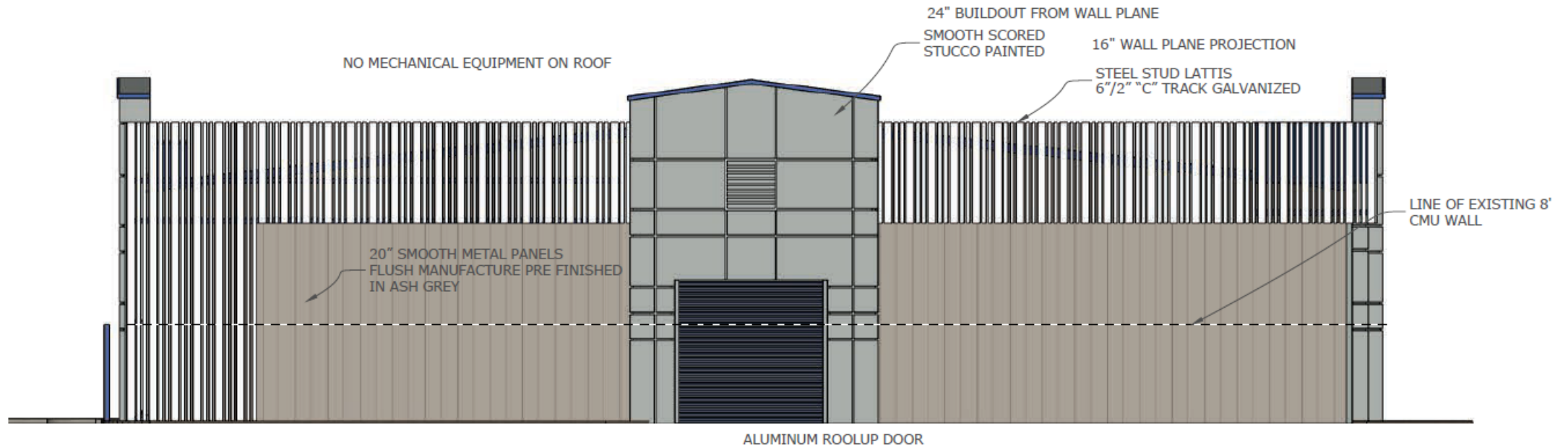


Alternative Compliance

- ✓ Materials. Primary facades shall incorporate at least three (3) different and distinct materials.
- ✓ Materials. Each primary building material shall cover no more than 50% of a publicly-visible façade.



Elevations



574 S.F.
34.4%
20" SMOOTH
STEEL PANEL
ASH GRAY



337 S.F.
20%
SCORED
STUCCO
SMOOTH
GRAY WOLF

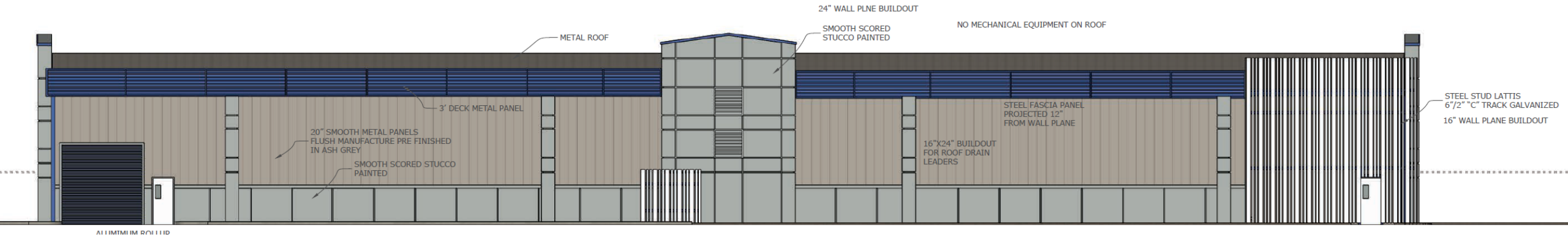



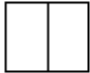
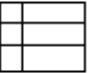


719 S.F.
43%
STEEL STUD
LATTIS
6"/2" "C"
TRACK-GALV.

South Elevation (Main St. view)



Elevations

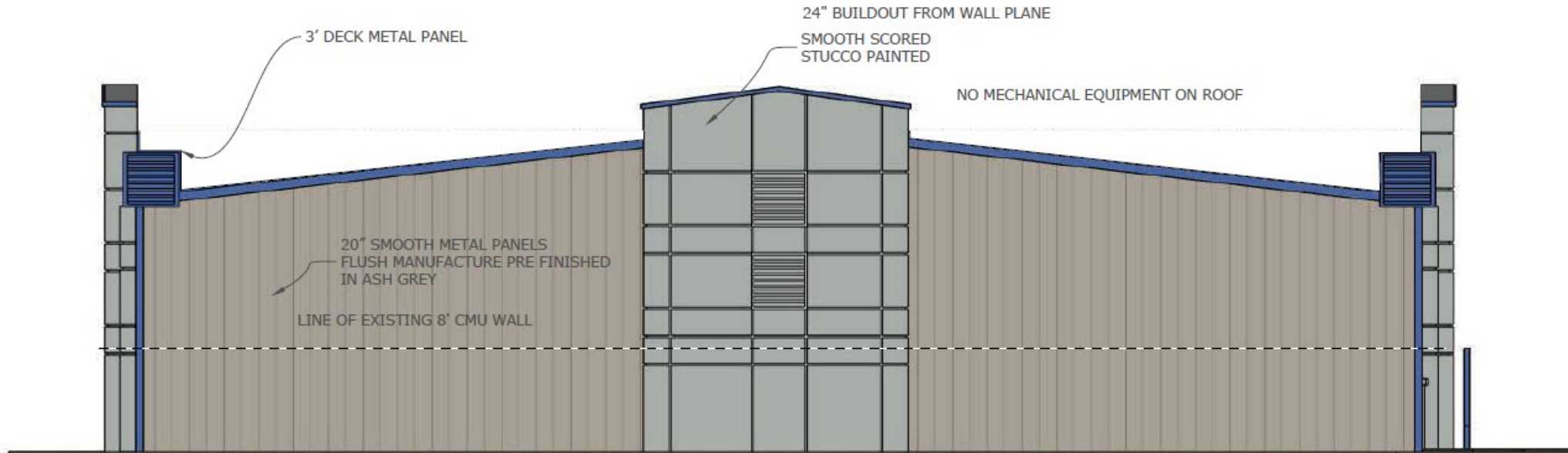





				
1920 S.F. 41%	918 S.F. 20.5%	631 S.F. 13.5%	620 S.F. 13.2%	481 S.F. 10.3%
20" SMOOTH STEEL PANEL ASH GRAY	STUCCO BASE SMOOTH CENTURY BLUE	SCORED STUCCO SMOOTH GRAY WOLF	3" DECK HORIZONTAL STEEL PANEL GALVANIZED	STEEL STUD LATTIS 6 1/2" "C" TRACK-GALV.

West Elevation



Elevations

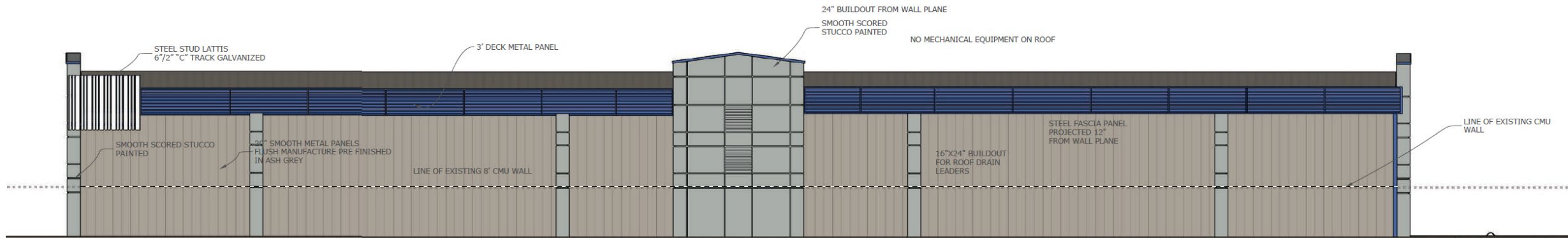


		
1036 S.F. 68%	423 S.F. 26%	32 S.F. 2%
20" SMOOTH STEEL PANEL ASH GRAY	3" DECK HORIZONTAL STEEL PANEL GALVANIZED	1.5" CORR. HORIZONTAL STEEL PANEL GALVANIZED

North Elevation

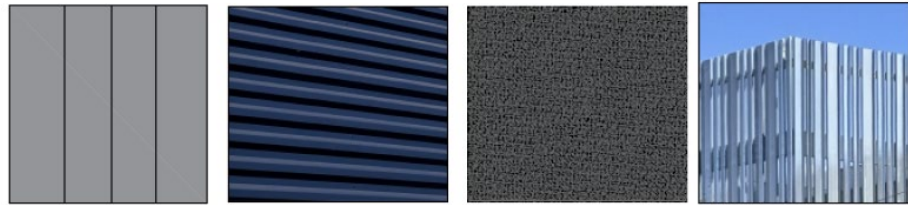


Elevations



1764 S.F. 58%	706 S.F. 23.2%	425 S.F. 14%	81 S.F. 02%
20" SMOOTH STEEL PANEL ASH GRAY	3" DECK HORIZONTAL STEEL PANEL GALVANIZED	SCORED STUCCO SMOOTH GRAY WOLF	STEEL STUD LATTIS 6"/2" "C" TRACK-GALV.

East Elevation



20" SMOOTH WALL PANEL
PRE-FINISHED STEEL
GENERAL STEEL-ASH GRAY

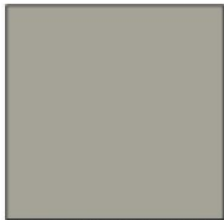
3" STEEL DECK PANEL
HORIZONTAL
PAINTED CENTURY BLUE

FRAMED ARCHITECTURAL BUILDOUT
SCORED STUCCO-SMOOTH FINISH
DE 6354-GRAY WOLF

STEEL STUD
LATTIS
8" / 2" "C"
TRACK-GALV.



STUCCO SMOOTH FINISH
DUN EDWARDS PAINT
CONCRETE JUNGLE
DEG R68



METAL PRE FINISHED SIDING
GENERAL STEEL
METAL PANEL
ASH GREY



METAL PANELS PAINTED
CENTURY BLUE
METAL STUD SCREEN WALLS
GALVANIZED FINISH

Materials & Colors

- Stucco – Smooth Finish
- Stucco – Scored
- Pre-Finished Steel
- Steel Stud Lattis



Renderings



Looking north from Main Street



Renderings

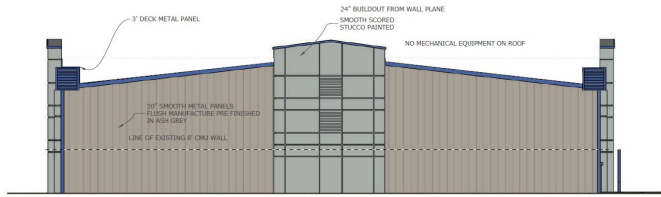


Looking east from the interior of the site



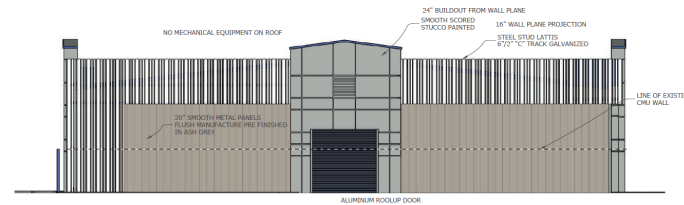
Alternative Compliance

North



of Materials: 2
Percentage: 68%

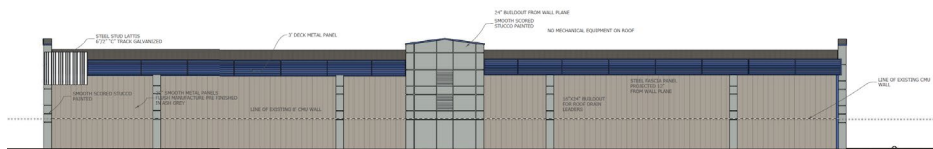
South



of Materials:
Meeting

Percentage:
Meeting

East



of Materials: 2
Percentage: 58%

West



of Materials:
Meeting

Percentage:
Meeting



Findings

Staff is seeking your review and recommendation on the following:

- ✓ Alternative Compliance

City of Mesa

Design Review Board



Landscape Plan

