

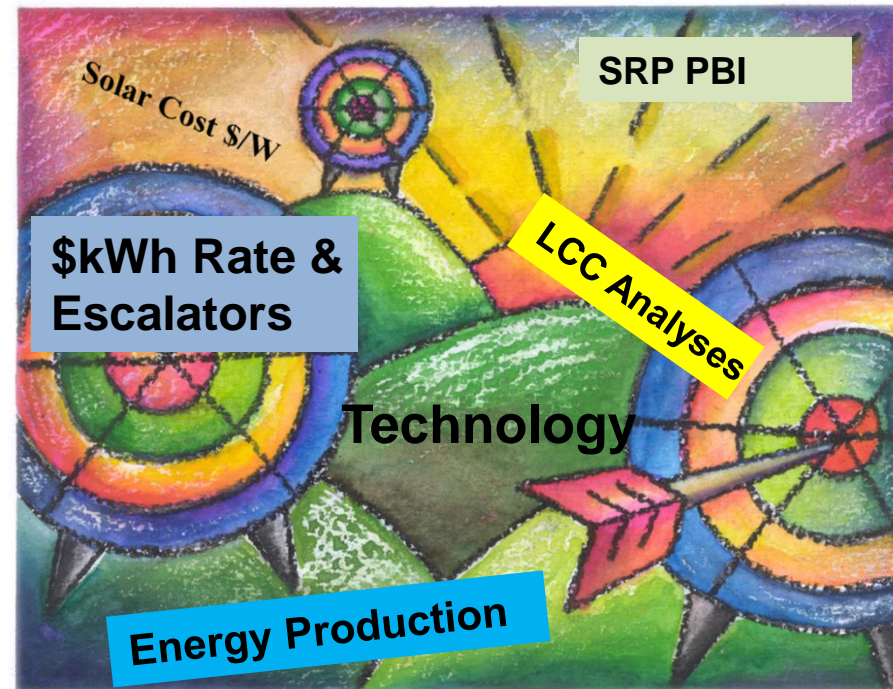
City Council Presentation

Proposed Solar Service Agreements

Christine Zielonka
Development & Sustainability Director
May 16, 2012

Agenda

- Background
- Solar Services Agreement (SSA)
- Proposed Locations
- SRP Incentives



Mesa Solar Bid Process



Used City of Chandler Request for Qualifications

- 12 Pre-Qualified Vendors

City of Mesa - REQUEST FOR PROPOSALS

- City Wide Solar Power Services
- Solar City and Kitchell Awarded
- 3 Year Term with a Possible Two Year Renewal

First Project Under Construction Fiesta PD

Mesa SSA



SSA – Solar Services Agreement

- Separate SSA for each site - system size, price per kilowatt hour (kWh), production guarantees
- Solar vendor installs, operates and maintains solar system and sells power
- Mesa purchases energy at a agreed upon rate
- Term 20 years

SRP Solar Program



PBI Customer Cap of 1 MW

Solar for Nonprofits Program

SRP has set aside funding for 5 megawatts (MW) of Production Based Incentive for schools, governments, and eligible non-profit customers for the Fiscal Year 2014 (May 1, 2013 - April 30, 2014).

The current incentive is \$0.04 per kWh for a total of 5 MW.

Progress towards the 5 MW goal is reflected in the



Updated May 6, 2013

SSA Highlights – Public Safety



Training Facility

- 130 kW System
- \$0.058/ kWh for 20 years with no escalator
- Current rate \$0.085/kWh
- Production 225,000 kWh Year 1 (~ 35% of estimated energy use)
- No upfront cost
- Savings between \$100K and \$200K over 20 years

Public Safety Training



SSA Highlights – Red Mountain Multi-Gen Center

- 305 kW System
- \$0.061/ kWh for 20 years with no escalator
- Current rate \$0.079/kWh
- Production 490,000 kWh Year 1 (~ 47% of estimated energy use)
- No upfront cost
- Savings between \$200K and \$300K over 20 years

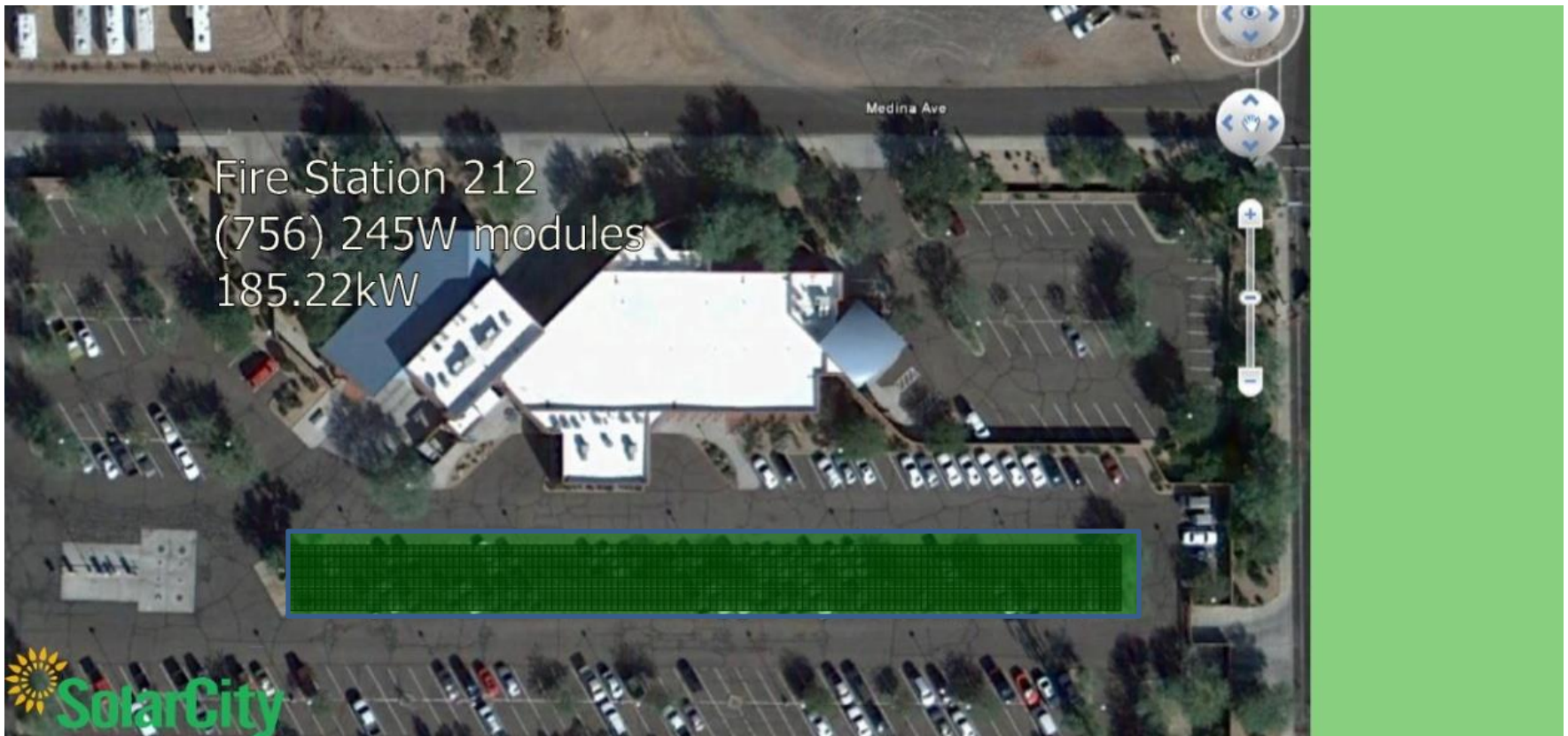
Red Mountain Multi-Generational Center



SSA Highlights – Fire Station 212

- 185 kW System
- \$0.067/ kWh for 20 years with no escalator
- Current rate \$0.077/kWh
- Production 300,000 kWh Year 1 (~ 72% of estimated energy use)
- No upfront cost
- Savings between \$100K and \$200K over 20 years

Fire Station 212



Fire Station 212
(756) 245W modules
185.22kW

Cost and Savings

	RM-MGC 305.3kW System	Pub Training 130.3 kW System	FS 212 185.2 kW System	Total
Annual Savings	\$4,700	\$8,700	\$8,900	\$22,300
20 Year Savings (*est .) SolarCity	\$293.5K	\$309.8	\$368.1	\$971.5

QUESTIONS?