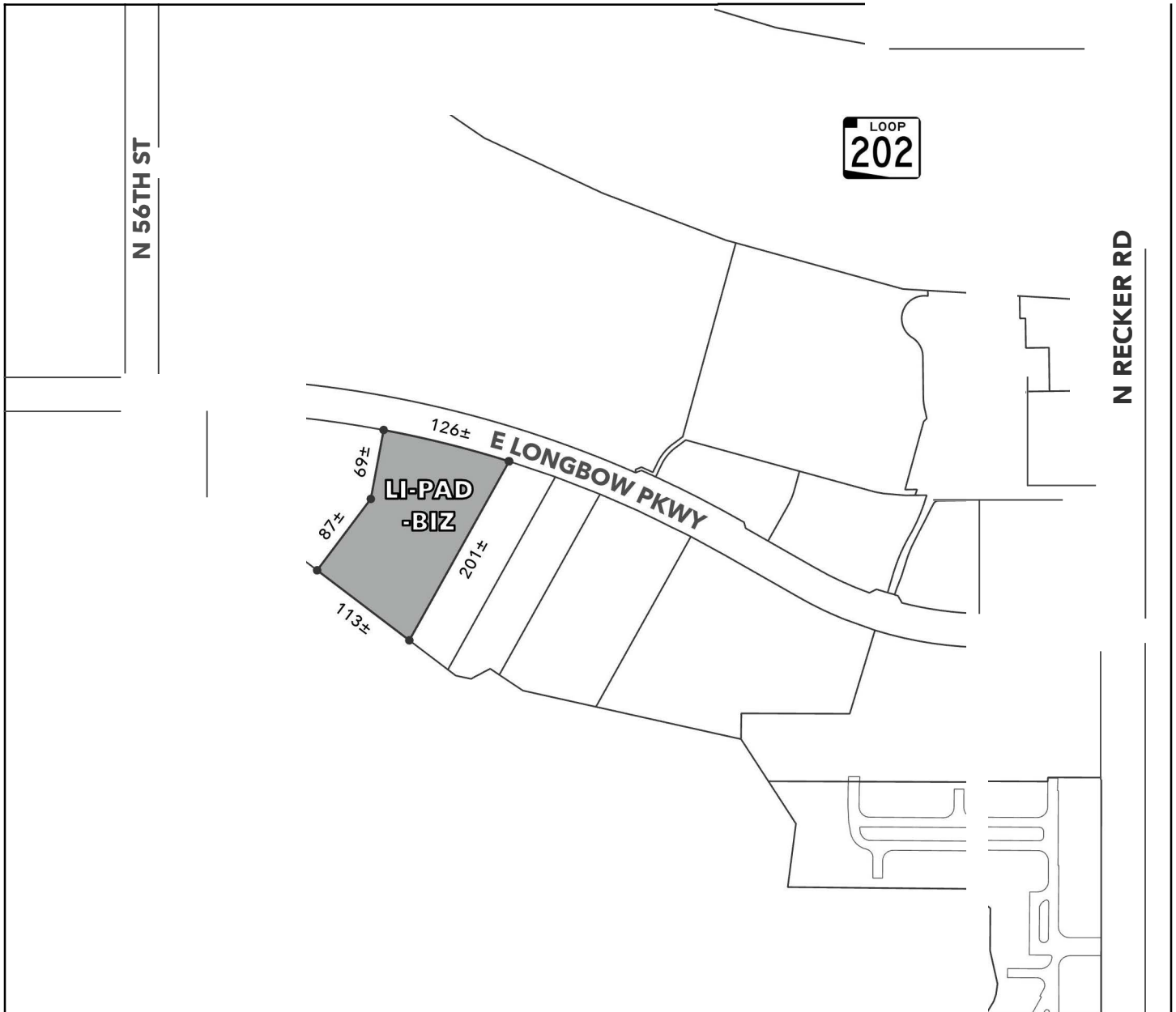


# OFFICIAL SUPPLEMENTARY ZONING MAP AMENDING THE CITY OF MESA ZONING MAP



CASE: ZON25-00917

ACREAGE: 3.4±

REQUEST: Rezone from Light Industrial with a Planned Area Development Overlay (LI-PAD) to Light Industrial with a Planned Area Development Overlay and Bonus Intensity Zone Overlay (LI-PAD-BIZ), Council Use Permit (CUP) and Site Plan Review. This request will allow for the development of an approximately 56,360± square foot hotel and future commercial development.

ORDINANCE: 6008

Please be advised that the attached zoning changes were approved by the Mesa City Council on May 4, 2026 by Ordinance #6008. If you have any questions concerning these changes, contact the City of Mesa Planning Division at 480-644-2385.