

Downtown Façade  
Improvement Program

**Jeff McVay**  
Manager of Downtown Transformation

**Anthony Rodriguez**  
Downtown Transformation Project  
Manager

**Bryce Albretsen**  
Engineering Sr. Civil Engineer

# PROGRAM OVERVIEW

---

- Preference for properties with colonnade
- Program Area: Country Club to Center, 1st St to 1st Ave
- City managed design and construction
- Historically sensitive design
- Private participants must contribute 5% of the total estimated direct construction cost





PROPERTIES





120 W Main St

121-123 W Main St

101 W Main St

# 101 W. MAIN



- 101 W. Main- One Oh One art gallery
- Would be part of removing colonnade from MacDonald to Robson



# 101 W. MAIN



99-114.4  
Mesa City Bank  
1900 s





# 120 W. MAIN ST

---



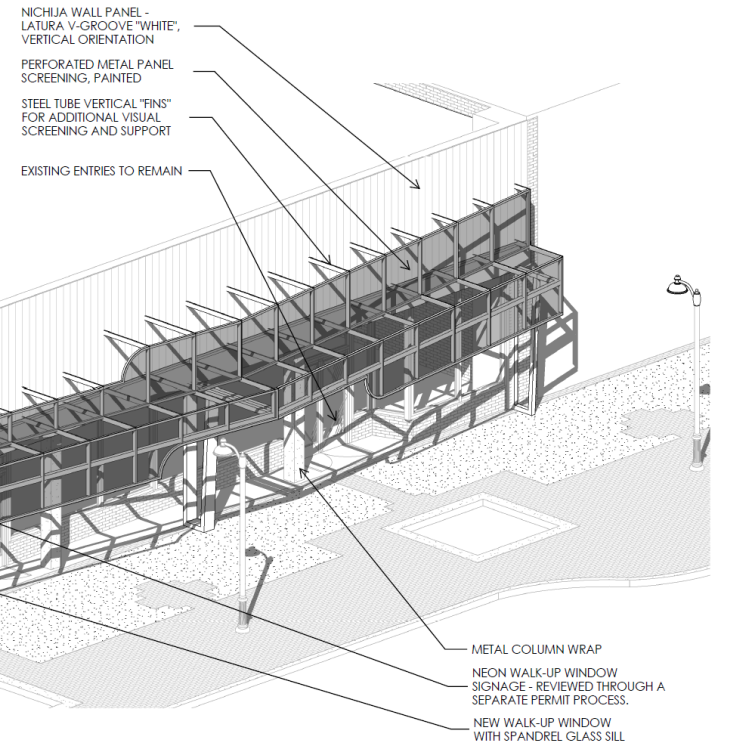
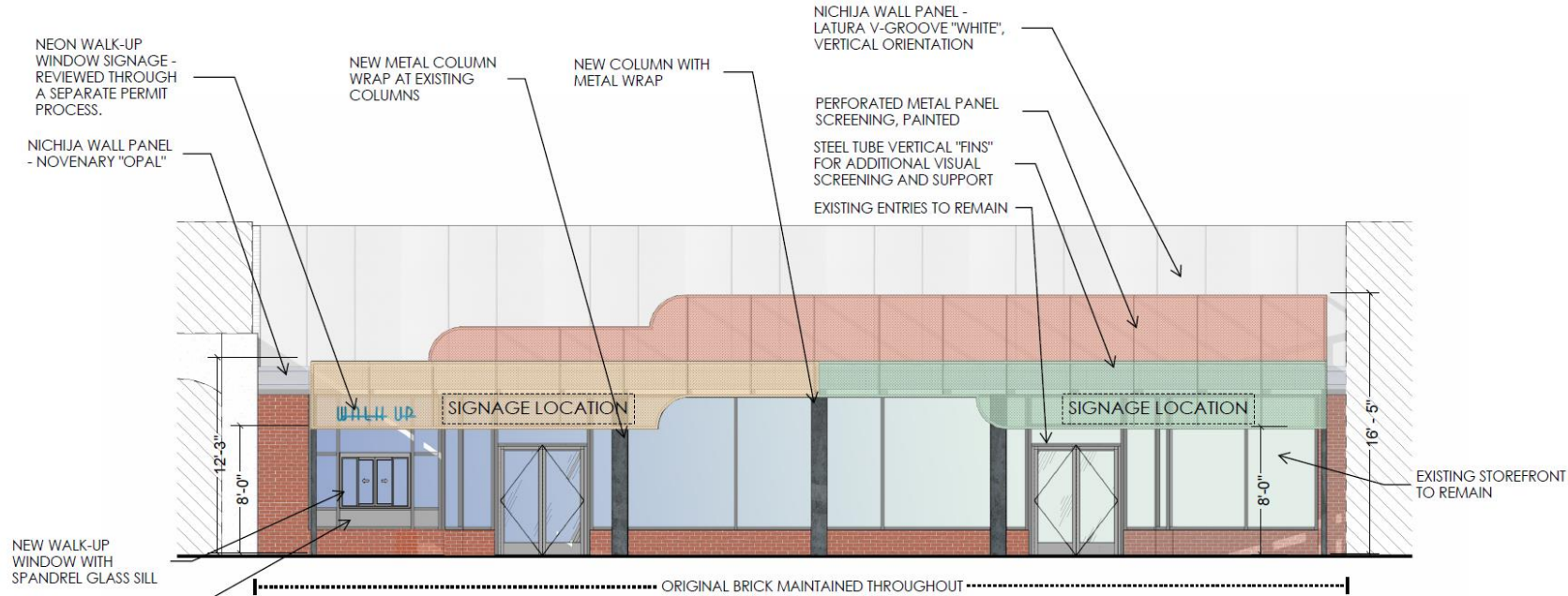
- 120 W. Main St- Tortoise and the Hare (lease signed)
- Colonnade already removed due to long-term maintenance issues



# 120 W. MAIN ST



# 120 W. MAIN ST





# 120 W. MAIN ST





# 113-123 W. MAIN ST



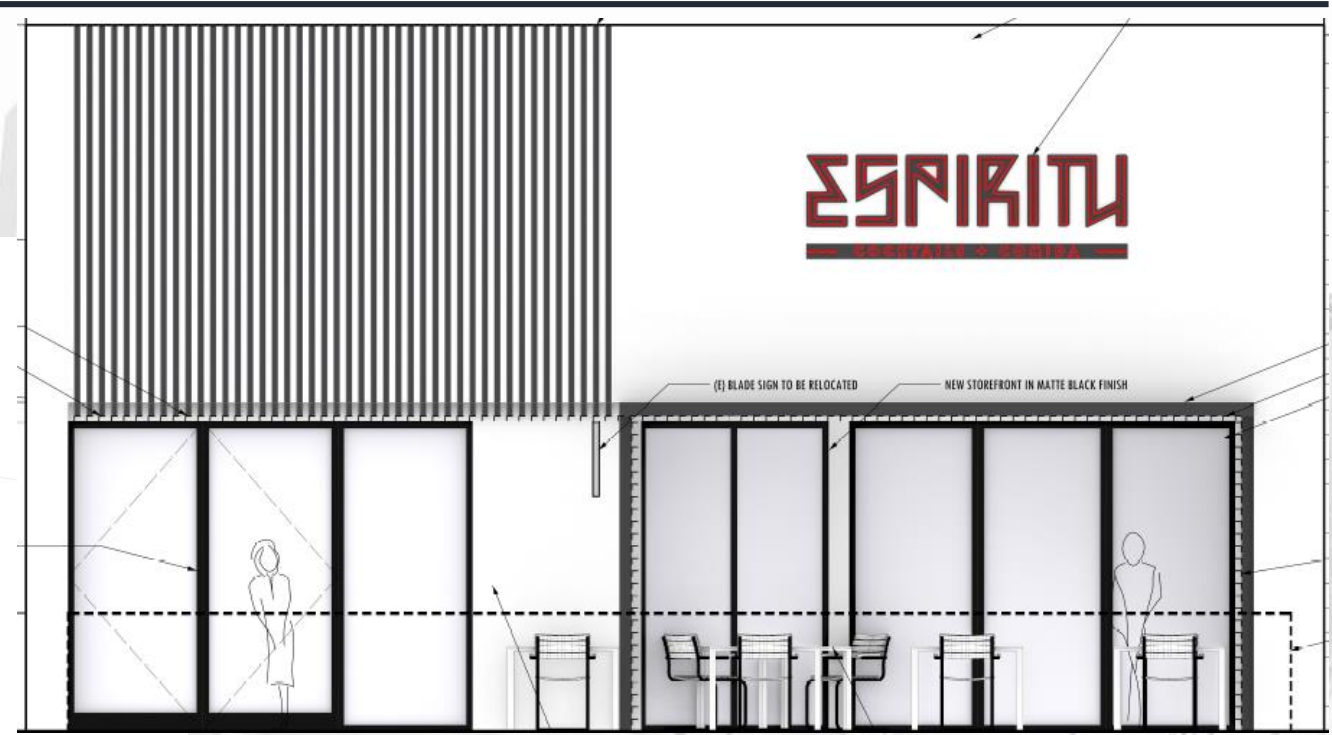
- 121-123 W. Main St- Espiritu
- Would be part of removing colonnade from MacDonald to Robson



# 113-123 W. MAIN ST



# 113-123 W. MAIN ST





A grayscale architectural rendering of a modern city street scene. In the foreground, a tram is moving from left to right, blurred to indicate motion. The street has multiple lanes, including a dedicated tram lane. On the left, there are traffic lights and a pedestrian crossing. In the background, there are several buildings, including a tall, ornate tower and a large, modern building with a glass facade. The overall scene is bright and clear, with a clean, modern aesthetic.

# QUESTIONS