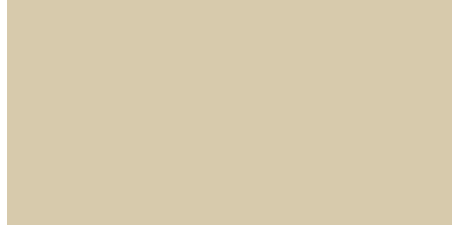


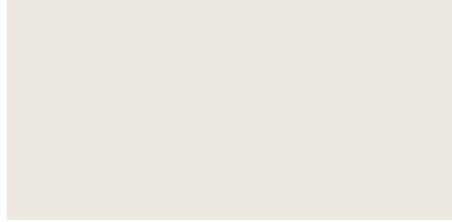
# MATERIALS LEGEND

---

**M1** **WALLS**  
PVDF COATING SANDSTONE  
E: 0.86 SRI: 71



**M2** **ROOF AND EAVES**  
PVDF COATING PEARL WHITE  
E: 0.89 SRI: 80



**M3** **DOORS AND OTHER ELEMENTS**  
PVDF COATING BROWNSTONE  
E: 0.86 SRI: 53



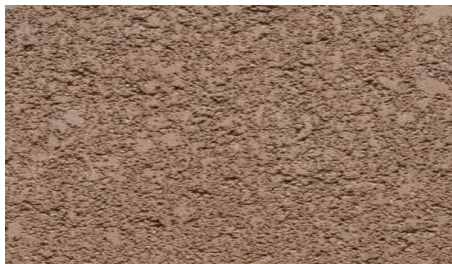
**M4** **WALLS**  
PVDF COATING  
CAMPER'S INN GREEN -  
SHERWIN WILLIAMS



**M5** **WALLS**  
PVDF COATING  
CAMPER'S INN ORANGE SUN -  
SHERWIN WILLIAMS



**S1** **TRASH ENCLOSURE, AND  
SITE WALLS**  
BOOT BROWN - ECHELON  
8" SMOOTH FACE CMU  
(R-13 CAVITY INSULATION)



## KEYNOTE

---

1 METAL ROOF PANEL

2 METAL WALL PANEL

An RV Maintenance Building for:  
**Little Dealer Little Prices of Mesa**

2038 N Country Club Dr,

Mesa, AZ 85201

---

### REVISIONS:

10.13.2025 PRELIMINARY PROGRESS

---

PRE-APP SUBMITTAL

---

PROJECT #

---

The drawings and written material herein constitute original work of the architect, and as intellectual property and instruments of service, are subject to copyright and may not be reproduced, distributed, published or used in any way without the express written consent of the architect.

© COPYRIGHT 2023

---

SHEET:

**MATERIAL  
BOARD**