

**ARCHICON**  
Architecture & Interiors, L.C.

5055 E WASHINGTON STREET  
SUITE 200  
PHOENIX, ARIZONA 85034  
(602) 222-4266  
FAX (602) 279-4305  
www.ARCHICON.COM

**CABANA ON POWER ROAD RETAIL CENTER**  
6209 S POWER ROAD  
MESA, ARIZONA

PROJECT NUMBER: 2466810-01  
PROJECT MANAGER: JEFF K  
DRAWN BY: JEFF K  
CHECKED BY: JEFF K

NO	REVISION	DATE

SHEET DESCRIPTION  
EXTERIOR ELEVATIONS



SHEET NO.

**A300**

ISSUE DATE: 24 MAY 2024

**KEYNOTES**

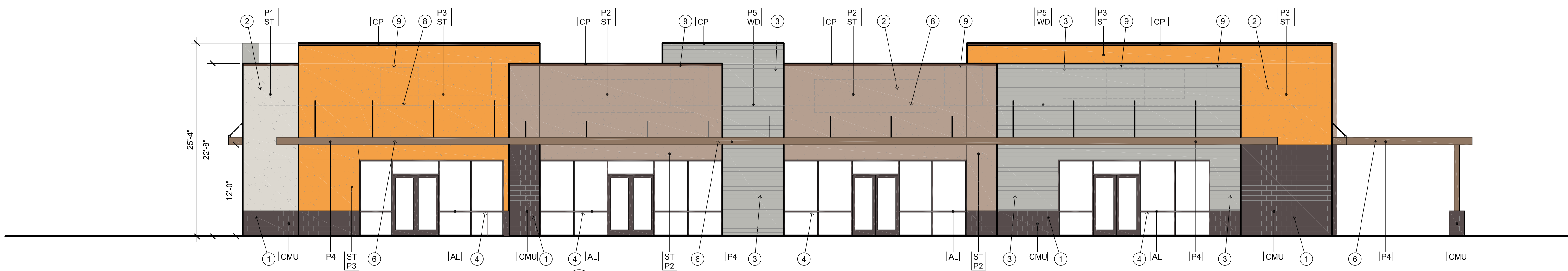
- 1 CMU VENEER WITH SEALER
- 2 STUCCO, SYNTHETIC FINISH AND INTEGRAL COLOR
- 3 WOOD SIDING, PAINTED
- 4 ALUMINUM STOREFRONT SYSTEM WITH INSULATED GLAZING
- 5 HOLLOW METAL DOOR AND FRAME, PAINTED.
- 6 STEEL CANOPY, PAINTED.
- 7 DRIVE-THRU WINDOW
- 8 LINE OF ROOF BEYOND (DASHED)
- 9 MECHANICAL UNIT BEYOND (DASHED)
- 10 ADDRESS NUMBERS
- 11 LIGHT FIXTURE

**GENERAL NOTES**

- 1 ALL DOWNSPOUTS WILL BE INTERNALIZED
- 2 ALL MECHANICAL UNITS WILL BE FULLY SCREENED

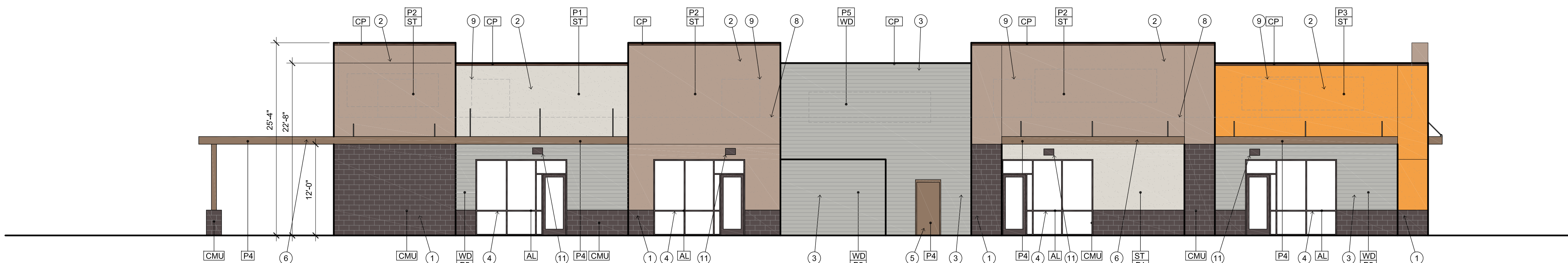
**MATERIALS AND COLORS**

- AL ALUMINUM STOREFRONT SYSTEM  
COLOR: DARK BRONZE
- CMU CONCRETE MASONRY UNIT  
MANUFACTURER: OLD CASTLE- ECHELON  
TYPE: PRECISION (SMOOTH)  
COLOR: BLACK CANYON
- P1 PAINT (STUCCO)  
MANUFACTURER: SHERWIN WILLIAMS  
COLOR: DRIFT OF MIST SW 9166
- P2 PAINT (STUCCO)  
MANUFACTURER: PPG PAINTS  
COLOR: NUT SHELL 14-02
- P3 PAINT (STUCCO)  
MANUFACTURER: PPG PAINTS  
COLOR: CORNUCOPIA 1203-7
- P4 PAINT (HM DOORS AND CANOPIES)  
MANUFACTURER: PPG PAINTS  
COLOR: BARK 1007-7
- P5 PAINT (WOOD SIDING)  
MANUFACTURER: SHERWIN WILLIAMS  
COLOR: GRAY CLOUDS SW 7658
- CP METAL COPING  
MANUFACTURER: PAC-CLAD OR EQUAL  
COLOR: BURNISHED SLATE
- ST STUCCO  
STIPPLED FINISH TEXTURE  
INTEGRAL COLOR
- WD ALLURA LAP SIDING  
6" EXPOSURE, SMOOTH  
COLOR: PRIMED. SEE ELEVATIONS FOR COLOR



**1 SOUTH ELEVATION**

SCALE: 1/8" = 1'-0"

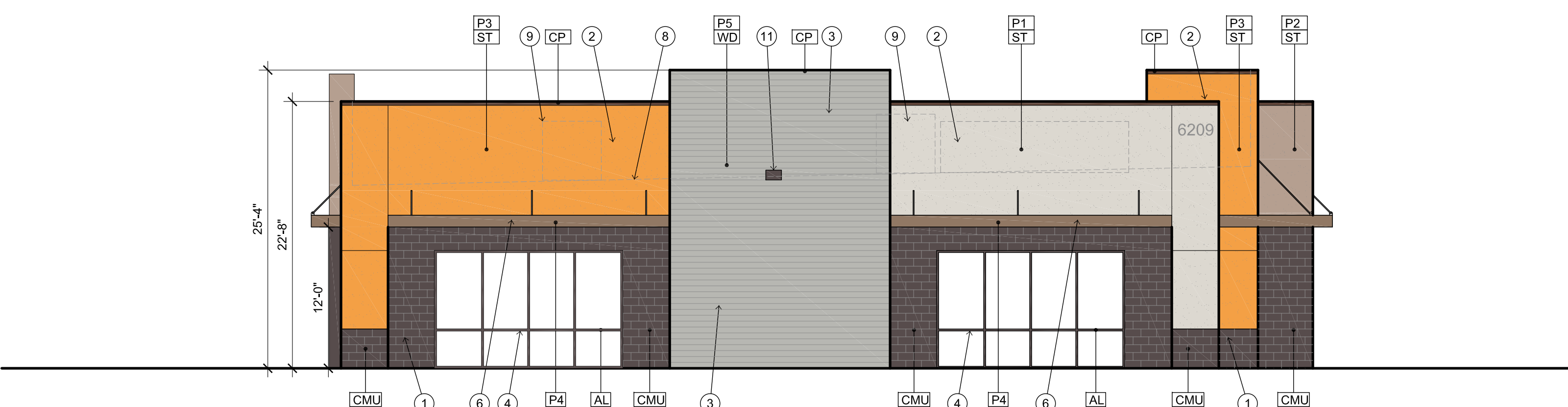


**2 NORTH ELEVATION**

SCALE: 1/8" = 1'-0"

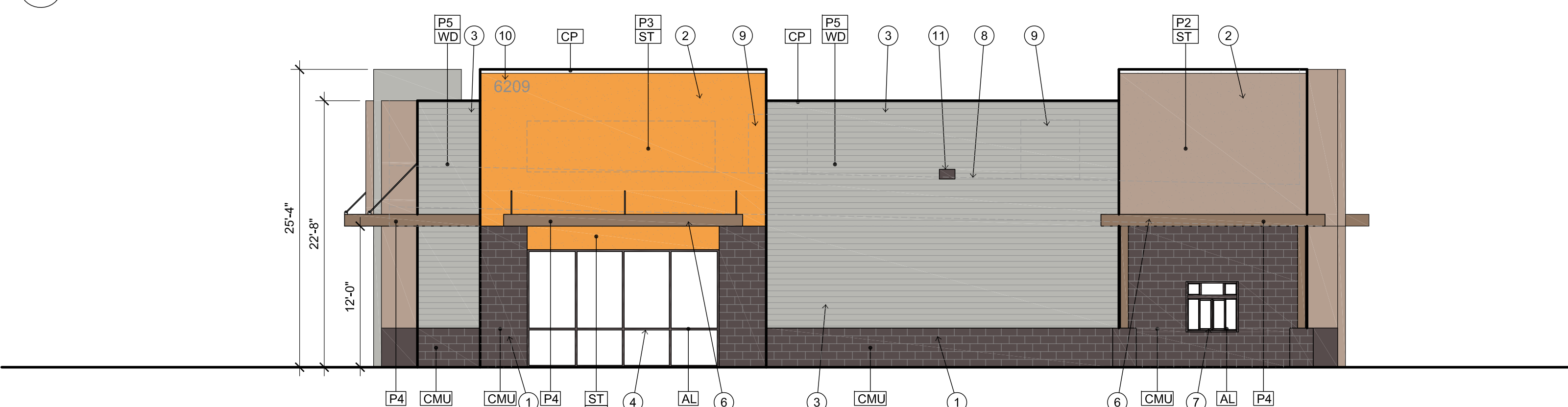
**ELEVATION MATERIAL CALCULATIONS**

SOUTH ELEVATION		
TOTAL FAÇADE	3,428 SF	
STUCCO	1,453 SF	42.39%
WOOD SIDING	711 SF	20.74%
CMU	259 SF	7.56%
GLASS (STOREFRONT)	870 SF	25.38%
METAL CANOPY	135 SF	3.93%
NORTH ELEVATION		
TOTAL FAÇADE	3,453 SF	
STUCCO	1,616 SF	46.80%
WOOD SIDING	788 SF	22.82%
CMU	444 SF	12.86%
GLASS (STOREFRONT)	480 SF	13.90%
HM DOOR	21 SF	0.61%
METAL CANOPY	104 SF	3.01%
WEST ELEVATION		
TOTAL FAÇADE	1,953 SF	
STUCCO	749 SF	38.35%
WOOD SIDING	475 SF	24.32%
CMU	349 SF	17.88%
GLASS (STOREFRONT)	320 SF	16.38%
METAL CANOPY	60 SF	3.07%
EAST ELEVATION		
TOTAL FAÇADE	1,848 SF	
STUCCO	534 SF	28.90%
WOOD SIDING	680 SF	36.80%
CMU	400 SF	21.64%
GLASS (STOREFRONT)	182 SF	9.85%
METAL CANOPY	52 SF	2.81%



**3 WEST ELEVATION**

SCALE: 1/8" = 1'-0"



**4 EAST ELEVATION**

SCALE: 1/8" = 1'-0"





## CABANA ON POWER ROAD RETAIL CENTER

EXTERIOR RENDERING - NORTH VIEW





## CABANA ON POWER ROAD RETAIL CENTER

EXTERIOR RENDERING - SOUTH VIEW