

field color

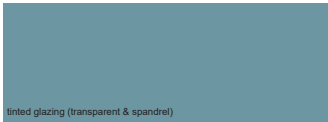
CONC-1

Description: Integrally color insulated concrete tilt-up panels.
 Manufacturer: Sokoman Colors
 Field Color: Alabaster
 Finish: smooth finish
 *Aircraft Silhouettes created by reveals set into tilt-up walls, lighter color as shown created by sand blasted surface treatment

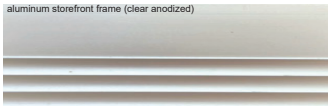


MP-1

Description: Aluminum metal panel rainscreen assembly
 Color: ValsparFluorpon Classic II 399C6724 Mica Grey
 Size: 16" wide flat panels



tinted glazing (transparent & spandrel)



aluminum storefront frame (clear anodized)

GL-1

Description: Insulated glazing unit in clear anodized aluminum frame
 Manufacturer: Vitro / Kawneer
 Color: Tinted glazing, Solarban 70(2) / Solexia



Southwest perspective, flight graphics integrated into tilt-up wall panels (final graphics TBD)



Southeast Perspective - looking at main entrance



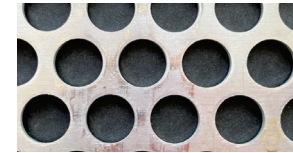
CMU-1

Description: Integrally colored ground face masonry with center score.
 Manufacturer: Trendstone
 Color: Palo Verde



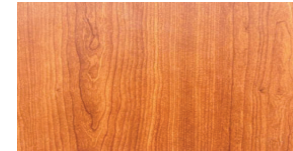
ACRY-1

Description: Colored acrylic panel at main entry.
 (Translucent - with back or top lighting)
 Manufacturer: Acrylite
 Color: Blue 5180-4



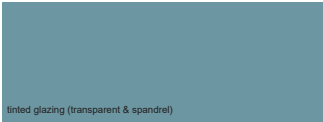
PERF-1

Description: Perforated panels at front canopy
 Manufacturer: McNichols
 Color: Clear Anodized Aluminum



WD-1

Description: Wall and soffit accent panels (metal panel with simulated wood grain pattern) at front entrance
 Manufacturer: Stonewood
 Color: Ashville Cherry



tinted glazing (transparent & spandrel)

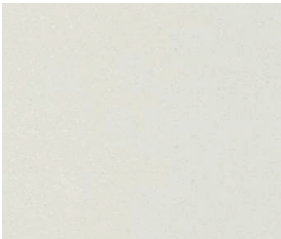


aluminum storefront frame (clear anodized)

GL-1
 Description: Insulated glazing unit in clear anodized aluminum frame
 Manufacturer: Vitro / Kawneer
 Color: Tinted glazing, Solarban 70(2) / Solexia



MP-1
 Description: Aluminum metal panel rainscreen assembly
 Color: ValsparFluorpon Classic II 399C6724 Mica Grey
 Size: 16" wide flat panels



HS-1
 Description: Vertical lifting fabric (roll-up) hangar doors
 Manufacturer: ASSA ABLOY (MegaDoor)
 Color: Bottom panel - Gray, remaining panels - Translucent



Northeast Perspective



MP-1
 Description: Aluminum metal panel rainscreen assembly
 Color: ValsparFluorpon Classic II 399C6724 Mica Grey
 Size: 16" wide flat panels



CONC-1
 Description: Integrally color insulated concrete tilt-up panels.
 Manufacturer: Soloman Colors
 Field Color: Alabaster
 Finish: smooth finish
**Aircraft Silhouettes created by reveals set into tilt-up walls, lighter color as shown created by sand blasted surface treatment*



Northwest Perspective



tinted glazing (transparent & spandrel)



aluminum storefront frame (clear anodized)

GL-1
 Description: Insulated glazing unit in clear anodized aluminum frame
 Manufacturer: Vitro / Kawneer
 Color: Tinted glazing, Solarban 70(2) / Solexia