

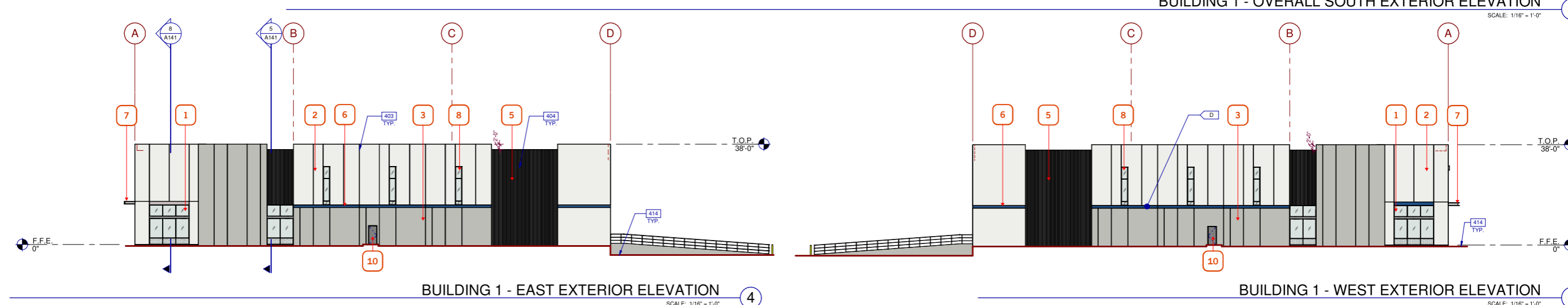
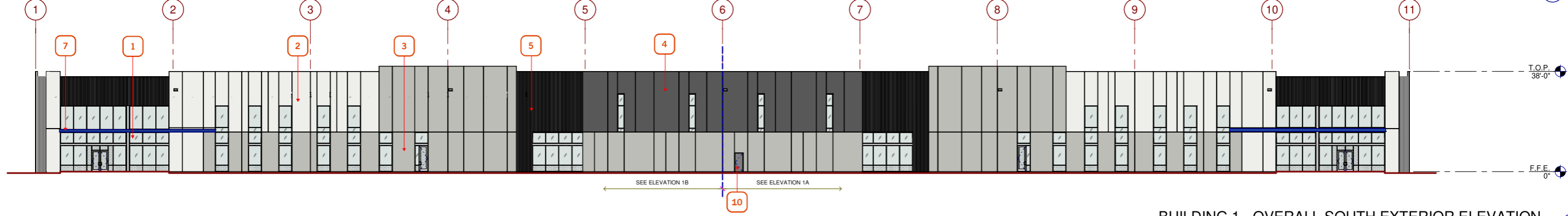
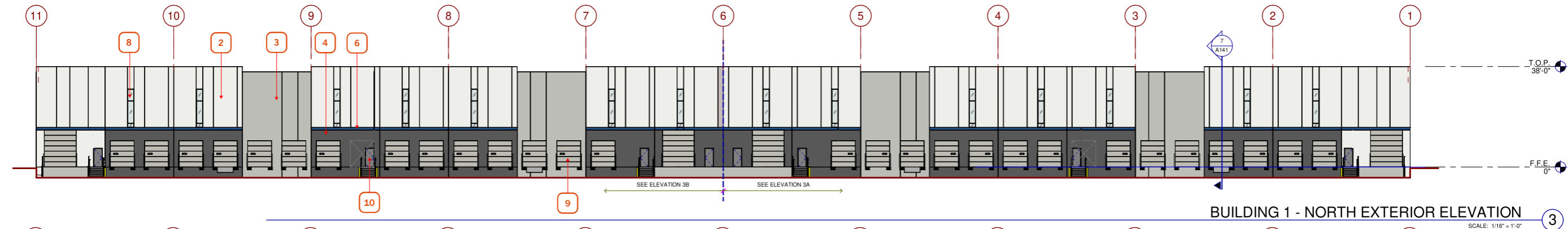
PECOS GATEWAY INDUSTRIAL

E PECOS ROAD
MESA, ARIZONA

CONCEPTUAL DESIGN
PHX22-0149-00
02.23.23

WARE MALCOMB





KEYNOTES

- | | | |
|--|---|--|
| <p>1 CLEAR ANODIZED ALUMINUM STOREFRONT SYSTEM W/ HIGH PERFORMANCE INSULATED GLAZING
8.8% MATERIAL COVERAGE</p> <p>2 CONCRETE TILT - UP PANEL WITH REVEALS AS SHOWN, PAINTED: SHERWIN WILLIAMS: EXTRA WHITE - SW 7006
35.3% MATERIAL COVERAGE</p> <p>3 CONCRETE TILT - UP PANEL WITH REVEALS AS SHOWN, PAINTED: SHERWIN WILLIAMS: ARGOS - SW 7065
26.3% MATERIAL COVERAGE</p> | <p>4 CONCRETE TILT - UP PANEL WITH REVEALS AS SHOWN, PAINTED: SHERWIN WILLIAMS: PEPPERCORN - SW 7674
11.8% MATERIAL COVERAGE</p> <p>5 FORMLINER, PAINTED: SHERWIN WILLIAMS: PEPPERCORN - SW 7674
8.6% MATERIAL COVERAGE</p> <p>6 ACCENT COLOR: SHERWIN WILLIAMS: FRANK BLUE - SW 6967
1.2% MATERIAL COVERAGE</p> | <p>7 CHANNEL BEAM CANOPY
0.2% MATERIAL COVERAGE</p> <p>8 CLERESTORY WINDOW
1.6% MATERIAL COVERAGE</p> <p>9 VERTICAL LIFT OVERHEAD DOOR
5.8% MATERIAL COVERAGE</p> <p>10 HOLLOW METAL DOOR
0.4% MATERIAL COVERAGE</p> |
|--|---|--|

KEYNOTES:

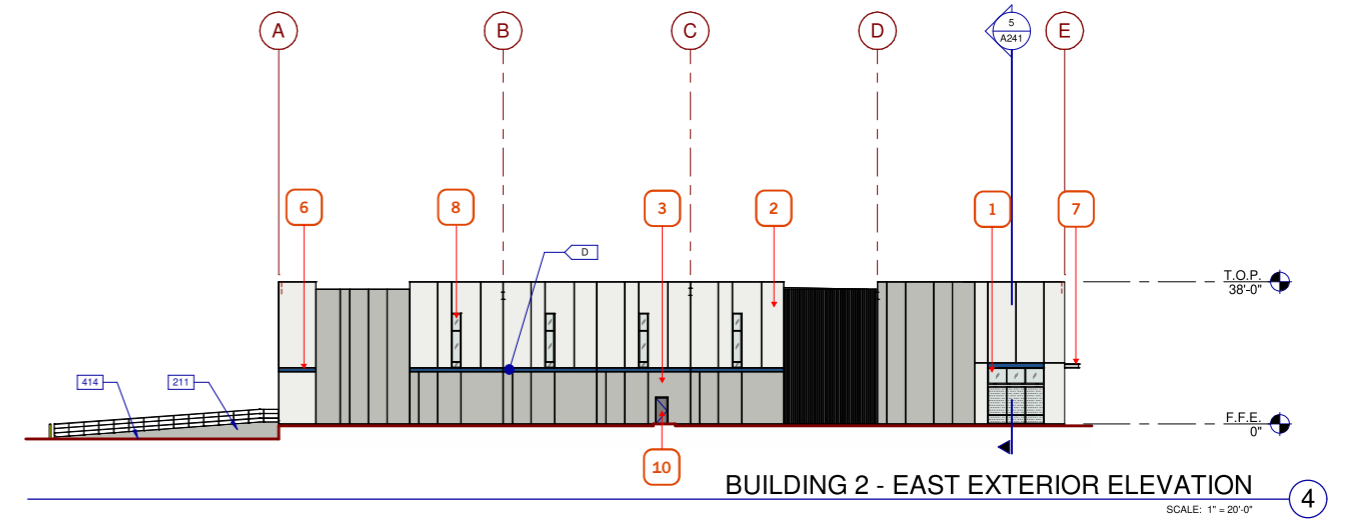
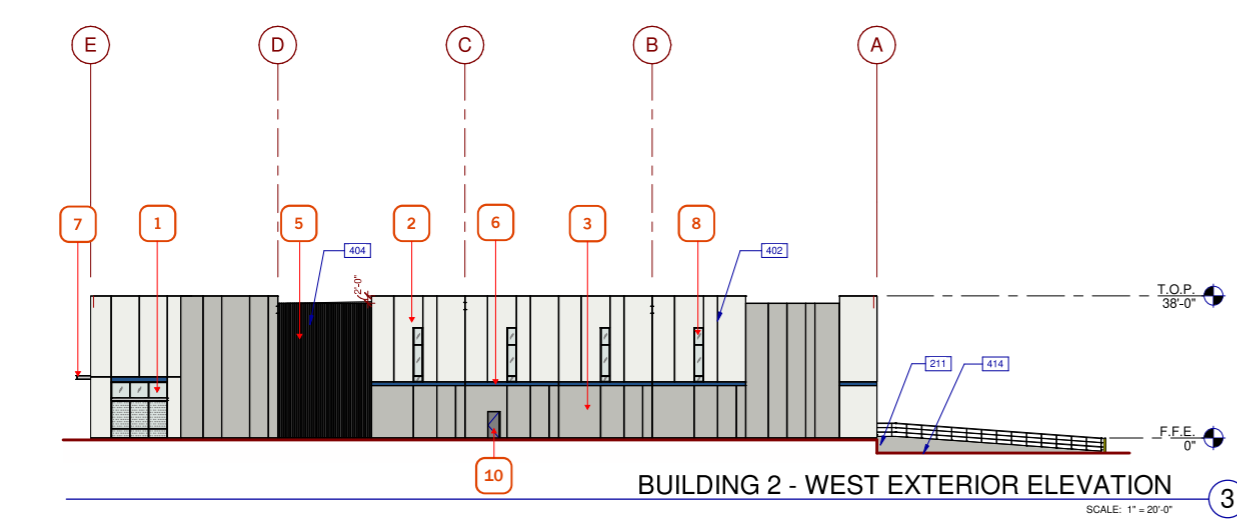
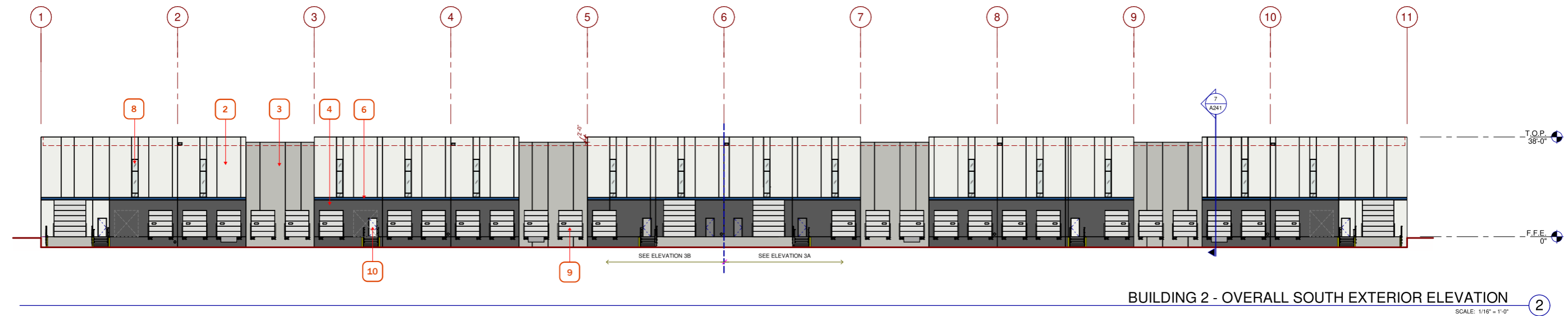
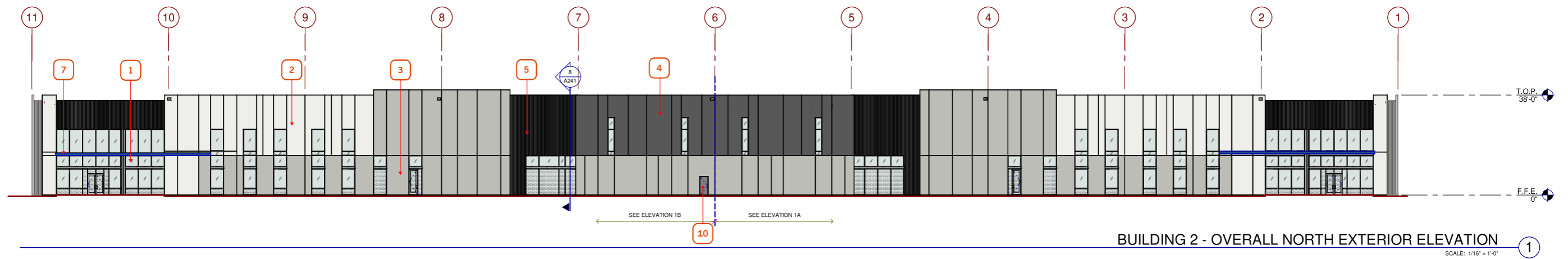
- SEE SHEET A010 FOR GENERAL NOTES
- 206 EXTERIOR STEEL STAIR, ALL COMPONENTS GALVANIZED.
 - 207 STEEL BOLLARD, CONCRETE-FILLED PAINTED SAFETY YELLOW.
 - 211 CONCRETE RAMP
 - 401 CONCRETE WALL, PAINTED.
 - 402 3/4" V-REVEAL.
 - 403 CONCRETE WALL JOINT.
 - 404 CONCRETE FORM LINER.
 - 408 SECONDARY SCUPPER.
 - 412 DOCK BUMPER.
 - 414 FINISH GRADE VARIES.
 - 415 LINE OF ROOF BEYOND.
 - 416 CLERESTORY WINDOW.
 - 418 KNOCKOUT PANEL.



This conceptual design is based upon a preliminary review of entitlement requirements and on unverified and possibly incomplete site and/or building information, and is intended merely to assist in exploring how the project might be developed. Signage shown is for illustrative purposes only and does not necessarily reflect municipal code compliance. All colors shown are for representative purposes only. Refer to material samples for actual color verification.

BUILDING 1 EXTERIOR ELEVATIONS
PECOS GATEWAY INDUSTRIAL
MESA, ARIZONA - PHX22-0149-00

WARE MALCOMB 02.23.23



KEYNOTES

- | | | |
|--|---|--|
| <p>1 CLEAR ANODIZED ALUMINUM STOREFRONT SYSTEM W/ HIGH PERFORMANCE INSULATED GLAZING
8.0% MATERIAL COVERAGE</p> <p>2 CONCRETE TILT - UP PANEL WITH REVEALS AS SHOWN, PAINTED: SHERWIN WILLIAMS: EXTRA WHITE - SW 7006
34.6% MATERIAL COVERAGE</p> <p>3 CONCRETE TILT - UP PANEL WITH REVEALS AS SHOWN, PAINTED: SHERWIN WILLIAMS: ARGOS - SW 7065
29.8% MATERIAL COVERAGE</p> | <p>4 CONCRETE TILT - UP PANEL WITH REVEALS AS SHOWN, PAINTED: SHERWIN WILLIAMS: PEPPERCORN - SW 7674
11.4% MATERIAL COVERAGE</p> <p>5 FORMLINER, PAINTED: SHERWIN WILLIAMS: PEPPERCORN - SW 7674
7.5% MATERIAL COVERAGE</p> <p>6 ACCENT COLOR: SHERWIN WILLIAMS: FRANK BLUE - SW 6967
1.2% MATERIAL COVERAGE</p> | <p>7 CHANNEL BEAM CANOPY
0.2% MATERIAL COVERAGE</p> <p>8 CLERESTORY WINDOW
1.6% MATERIAL COVERAGE</p> <p>9 VERTICAL LIFT OVERHEAD DOOR
5.3% MATERIAL COVERAGE</p> <p>10 HOLLOW METAL DOOR
0.4% MATERIAL COVERAGE</p> |
|--|---|--|

KEYNOTES:

SEE SHEET A010 FOR GENERAL NOTES

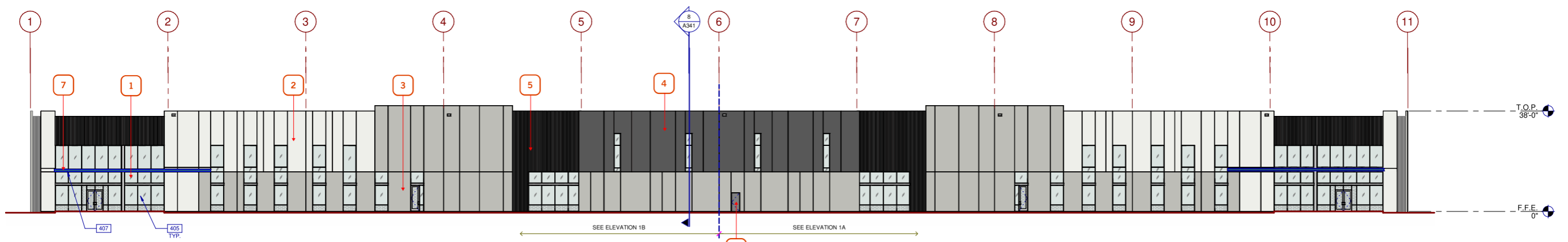
- 206 EXTERIOR STEEL STAIR, ALL COMPONENTS GALVANIZED.
- 207 STEEL BOLLARD, CONCRETE-FILLED PAINTED SAFETY YELLOW.
- 211 CONCRETE RAMP.
- 401 CONCRETE WALL, PAINTED.
- 402 3/4" V-REVEAL.
- 403 CONCRETE WALL JOINT.
- 404 CONCRETE FORM LINER.
- 408 SECONDARY SCUPPER.
- 412 DOCK BUMPER.
- 414 FINISH GRADE VARIES.
- 415 LINE OF ROOF BEYOND.
- 416 CLERESTORY WINDOW.
- 418 KNOCKOUT PANEL.



This conceptual design is based upon a preliminary review of entitlement requirements and on unverified and possibly incomplete site and/or building information, and is intended merely to assist in exploring how the project might be developed. Signage shown is for illustrative purposes only and does not necessarily reflect municipal code compliance. All colors shown are for representative purposes only. Refer to material samples for actual color verification.

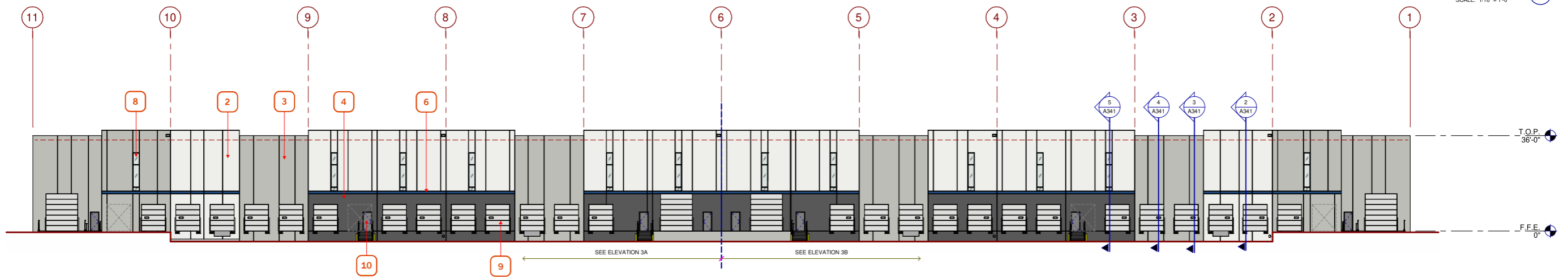
BUILDING 2 EXTERIOR ELEVATIONS
PECOS GATEWAY INDUSTRIAL
MESA, ARIZONA - PHX22-0149-00

WARE MALCOMB 02.23.23



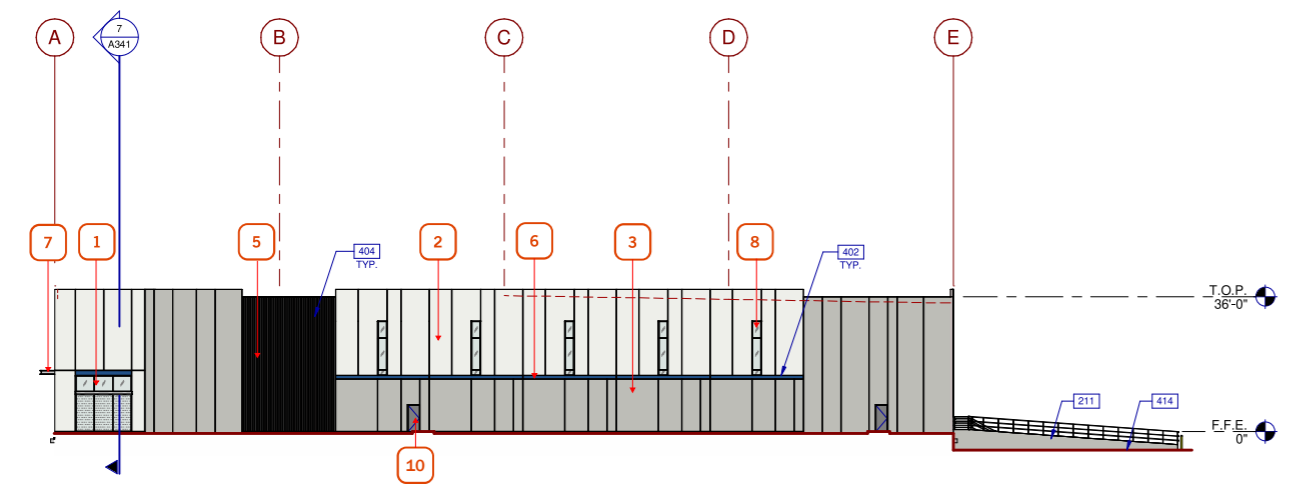
BUILDING 3 - OVERALL SOUTH EXTERIOR ELEVATION

SCALE: 1/16" = 1'-0"



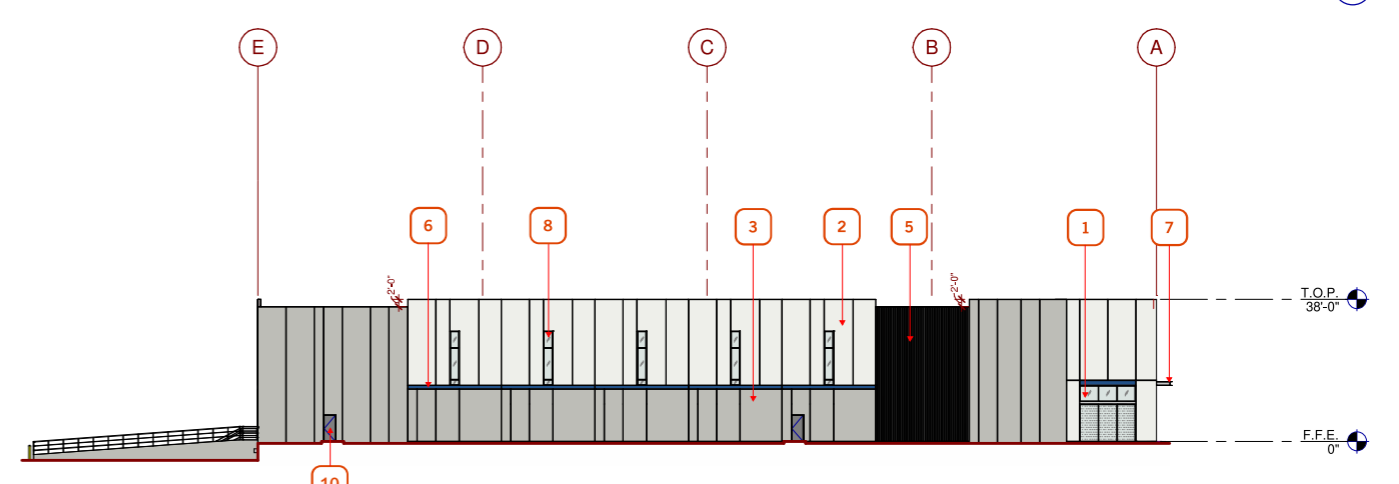
BUILDING 3 - OVERALL NORTH EXTERIOR ELEVATION

SCALE: 1/16" = 1'-0"



BUILDING 3 - EAST EXTERIOR ELEVATION

SCALE: 1" = 20'-0"



BUILDING 3 - WEST EXTERIOR ELEVATION

SCALE: 1" = 20'-0"

KEYNOTES

- | | | |
|--|--|--|
| <p>1 CLEAR ANODIZED ALUMINUM STOREFRONT SYSTEM W/ HIGH PERFORMANCE INSULATED GLAZING
7.7% MATERIAL COVERAGE</p> <p>2 CONCRETE TILT - UP PANEL WITH REVEALS AS SHOWN, PAINTED: SHERWIN WILLIAMS: EXTRA WHITE - SW 7006
30.5% MATERIAL COVERAGE</p> <p>3 CONCRETE TILT - UP PANEL WITH REVEALS AS SHOWN, PAINTED: SHERWIN WILLIAMS: ARGOS - SW 7065
37.2% MATERIAL COVERAGE</p> | <p>4 CONCRETE TILT - UP PANEL WITH REVEALS AS SHOWN, PAINTED: SHERWIN WILLIAMS: PEPPERCORN - SW 7674
8.9% MATERIAL COVERAGE</p> <p>5 FORMLINER, PAINTED: SHERWIN WILLIAMS: PEPPERCORN - SW 7674
7.3% MATERIAL COVERAGE</p> <p>6 ACCENT COLOR: SHERWIN WILLIAMS: FRANK BLUE - SW 6967
1.1% MATERIAL COVERAGE</p> | <p>7 CHANNEL BEAM CANOPY
0.2% MATERIAL COVERAGE</p> <p>8 CLERESTORY WINDOW
1.6% MATERIAL COVERAGE</p> <p>9 VERTICAL LIFT OVERHEAD DOOR
5.1% MATERIAL COVERAGE</p> <p>10 HOLLOW METAL DOOR
0.4% MATERIAL COVERAGE</p> |
|--|--|--|

KEYNOTES:

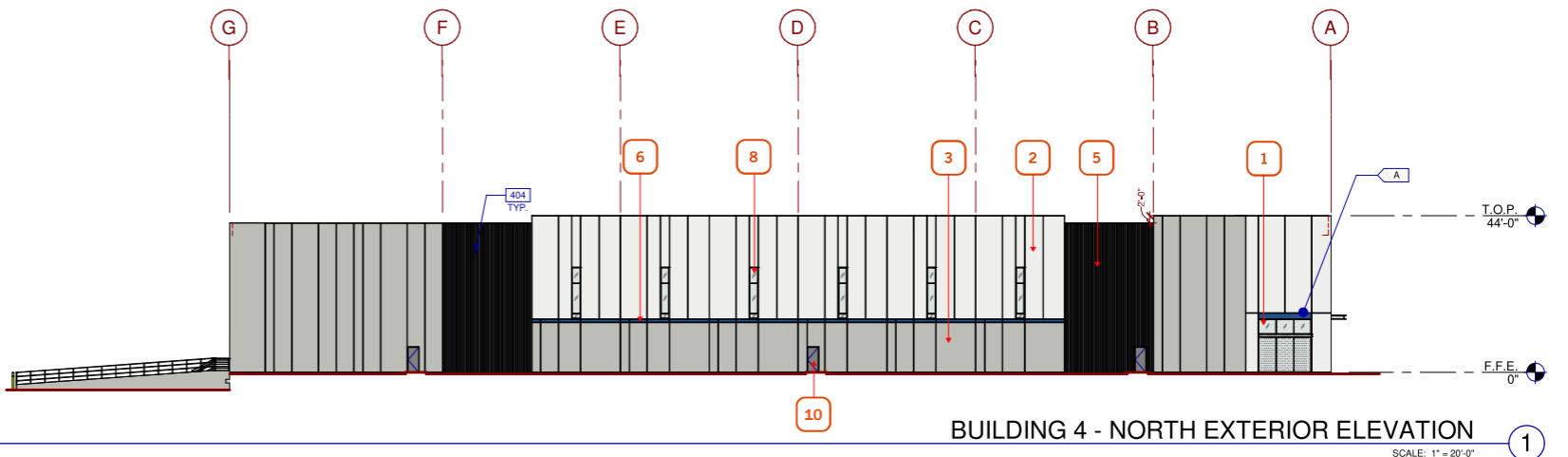
- SEE SHEET A010 FOR GENERAL NOTES
- 206 EXTERIOR STEEL STAIR, ALL COMPONENTS GALVANIZED.
 - 207 STEEL BOLLARD, CONCRETE-FILLED PAINTED SAFETY YELLOW.
 - 211 CONCRETE RAMP.
 - 401 CONCRETE WALL, PAINTED.
 - 402 3/4" V-REVEAL.
 - 403 CONCRETE WALL JOINT.
 - 404 CONCRETE FORM LINER.
 - 408 SECONDARY SCUPPER.
 - 412 DOCK BUMPER.
 - 414 FINISH GRADE VARIES.
 - 415 LINE OF ROOF BEYOND.
 - 416 CLERESTORY WINDOW.
 - 418 KNOCKOUT PANEL.



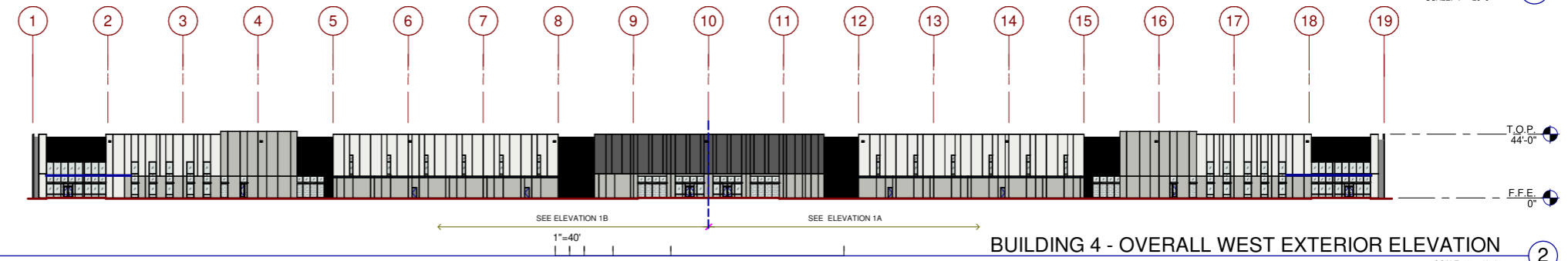
This conceptual design is based upon a preliminary review of entitlement requirements and on unverified and possibly incomplete site and/or building information, and is intended merely to assist in exploring how the project might be developed. Signage shown is for illustrative purposes only and does not necessarily reflect municipal code compliance. All colors shown are for representative purposes only. Refer to material samples for actual color verification.

BUILDING 3 EXTERIOR ELEVATIONS
PECOS GATEWAY INDUSTRIAL
MESA, ARIZONA - PHX22-0149-00

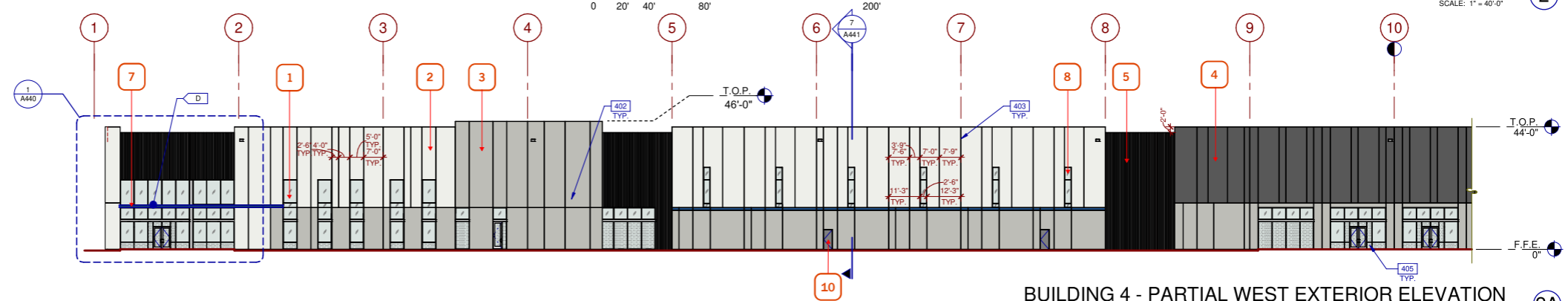
WARE MALCOMB 02.23.23



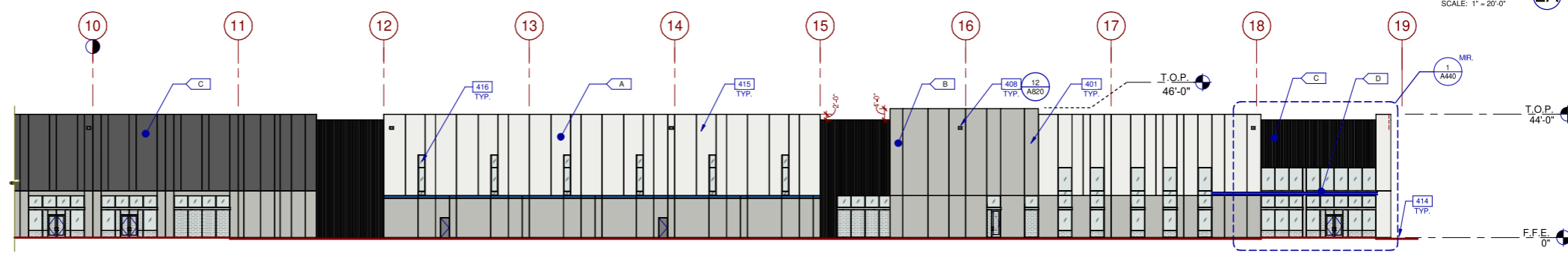
BUILDING 4 - NORTH EXTERIOR ELEVATION ①
SCALE: 1" = 20'-0"



BUILDING 4 - OVERALL WEST EXTERIOR ELEVATION ②
SCALE: 1" = 40'-0"



BUILDING 4 - PARTIAL WEST EXTERIOR ELEVATION ②A
SCALE: 1" = 20'-0"



BUILDING 4 - PARTIAL WEST EXTERIOR ELEVATION ②B
SCALE: 1" = 20'-0"

KEYNOTES

- | | | |
|---|--|---|
| <p>① CLEAR ANODIZED ALUMINUM STOREFRONT SYSTEM W/ HIGH PERFORMANCE INSULATED GLAZING
5.2% MATERIAL COVERAGE</p> <p>② CONCRETE TILT - UP PANEL WITH REVEALS AS SHOWN, PAINTED: SHERWIN WILLIAMS: EXTRA WHITE - SW 7006
38.5% MATERIAL COVERAGE</p> <p>③ CONCRETE TILT - UP PANEL WITH REVEALS AS SHOWN, PAINTED: SHERWIN WILLIAMS: ARGOS - SW 7065
28.3% MATERIAL COVERAGE</p> | <p>④ CONCRETE TILT - UP PANEL WITH REVEALS AS SHOWN, PAINTED: SHERWIN WILLIAMS: PEPPERCORN - SW 7674
11.3% MATERIAL COVERAGE</p> <p>⑤ FORMLINER, PAINTED: SHERWIN WILLIAMS: PEPPERCORN - SW 7674
8.7% MATERIAL COVERAGE</p> <p>⑥ ACCENT COLOR: SHERWIN WILLIAMS: FRANK BLUE - SW 6967
0.6% MATERIAL COVERAGE</p> | <p>⑦ CHANNEL BEAM CANOPY
0.1% MATERIAL COVERAGE</p> <p>⑧ CLERESTORY WINDOW
1.7% MATERIAL COVERAGE</p> <p>⑨ VERTICAL LIFT OVERHEAD DOOR
5.2% MATERIAL COVERAGE</p> <p>⑩ HOLLOW METAL DOOR
0.4% MATERIAL COVERAGE</p> |
|---|--|---|

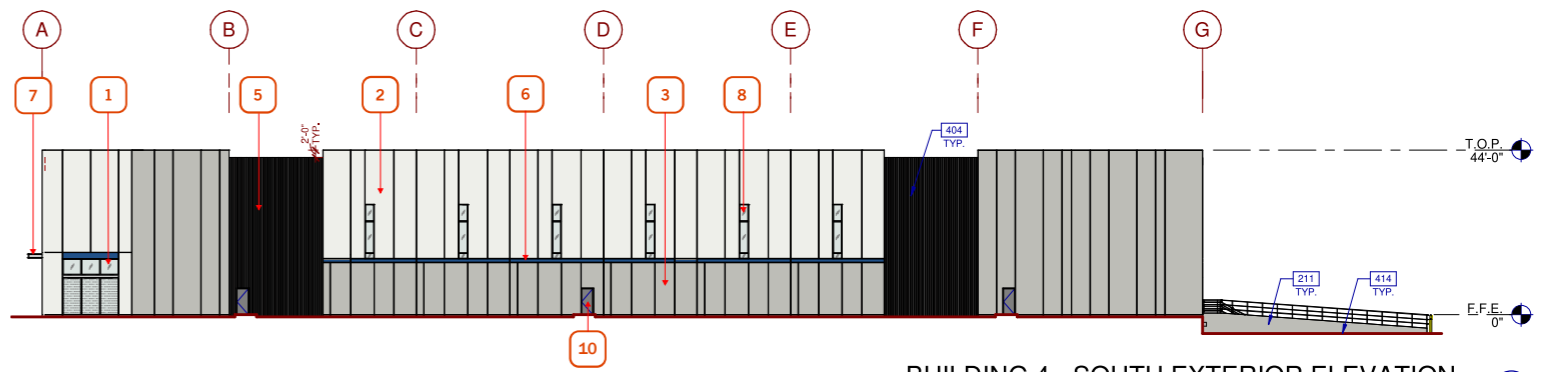
- KEYNOTES:**
- SEE SHEET A010 FOR GENERAL NOTES
- 206 EXTERIOR STEEL STAIR, ALL COMPONENTS GALVANIZED.
 - 207 STEEL BOLLARD, CONCRETE-FILLED PAINTED SAFETY YELLOW.
 - 211 CONCRETE RAMP.
 - 401 CONCRETE WALL, PAINTED.
 - 402 3/4" V-REVEAL.
 - 403 CONCRETE WALL JOINT.
 - 404 CONCRETE FORM LINER.
 - 408 SECONDARY SCUPPER.
 - 412 DOCK BUMPER.
 - 414 FINISH GRADE VARIES.
 - 415 LINE OF ROOF BEYOND.
 - 416 CLERESTORY WINDOW.
 - 418 KNOCKOUT PANEL.



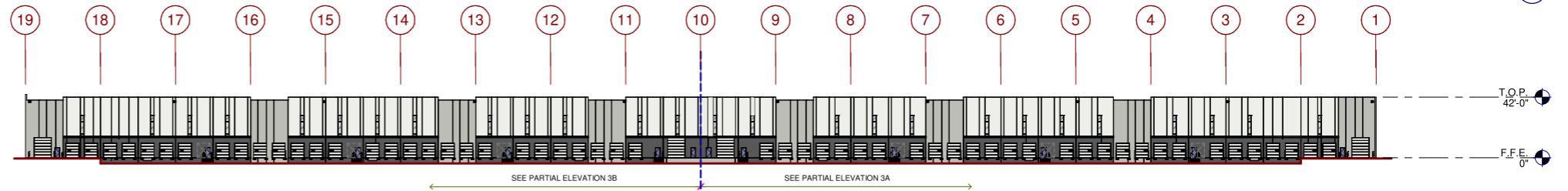
This conceptual design is based upon a preliminary review of entitlement requirements and on unverified and possibly incomplete site and/or building information, and is intended merely to assist in exploring how the project might be developed. Signage shown is for illustrative purposes only and does not necessarily reflect municipal code compliance. All colors shown are for representative purposes only. Refer to material samples for actual color verification.

BUILDING 4 EXTERIOR ELEVATIONS
PECOS GATEWAY INDUSTRIAL
MESA, ARIZONA - PHX22-0149-00

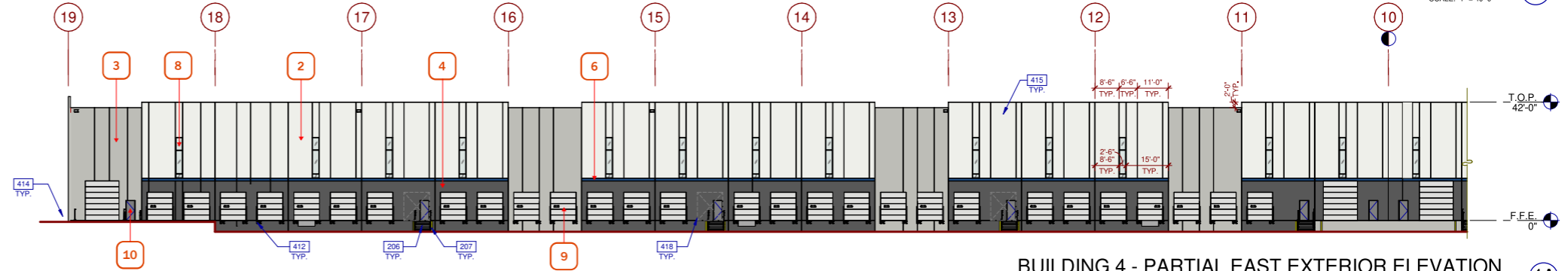
WARE MALCOMB 02.23.23



BUILDING 4 - SOUTH EXTERIOR ELEVATION 3
SCALE: 1" = 20'-0"



BUILDING 4 - OVERALL EAST EXTERIOR ELEVATION 4
SCALE: 1" = 40'-0"



BUILDING 4 - PARTIAL EAST EXTERIOR ELEVATION 4A
SCALE: 1" = 20'-0"



BUILDING 4 - PARTIAL EAST EXTERIOR ELEVATION 4B
SCALE: 1" = 20'-0"

KEYNOTES

- | | | |
|---|---|--|
| <p>1 CLEAR ANODIZED ALUMINUM STOREFRONT SYSTEM W/ HIGH PERFORMANCE INSULATED GLAZING</p> <p>2 CONCRETE TILT - UP PANEL WITH REVEALS AS SHOWN, PAINTED: SHERWIN WILLIAMS: EXTRA WHITE - SW 7006</p> <p>3 CONCRETE TILT - UP PANEL WITH REVEALS AS SHOWN, PAINTED: SHERWIN WILLIAMS: ARGOS - SW 7065</p> | <p>4 CONCRETE TILT - UP PANEL WITH REVEALS AS SHOWN, PAINTED: SHERWIN WILLIAMS: PEPPERCORN - SW 7674</p> <p>5 FORMLINER, PAINTED: SHERWIN WILLIAMS: PEPPERCORN - SW 7674</p> <p>6 ACCENT COLOR: SHERWIN WILLIAMS: FRANK BLUE - SW 6967</p> | <p>7 CHANNEL BEAM CANOPY</p> <p>8 CLERESTORY WINDOW</p> <p>9 VERTICAL LIFT OVERHEAD DOOR</p> <p>10 HOLLOW METAL DOOR</p> |
|---|---|--|

- KEYNOTES:**
- SEE SHEET A410 FOR GENERAL NOTES
- 206 EXTERIOR STEEL STAIR, ALL COMPONENTS GALVANIZED.
 - 207 STEEL BOLLARD, CONCRETE-FILLED PAINTED SAFETY YELLOW.
 - 211 CONCRETE RAMP.
 - 401 CONCRETE WALL, PAINTED.
 - 402 3/4" V-REVEAL.
 - 403 CONCRETE WALL JOINT.
 - 404 CONCRETE FORM LINER.
 - 408 SECONDARY SCUPPER.
 - 412 DOCK BUMPER.
 - 414 FINISH GRADE VARIES.
 - 415 LINE OF ROOF BEYOND.
 - 416 CLERESTORY WINDOW.
 - 418 KNOCKOUT PANEL.



This conceptual design is based upon a preliminary review of entitlement requirements and on unverified and possibly incomplete site and/or building information, and is intended merely to assist in exploring how the project might be developed. Signage shown is for illustrative purposes only and does not necessarily reflect municipal code compliance. All colors shown are for representative purposes only. Refer to material samples for actual color verification.

BUILDING 4 EXTERIOR ELEVATIONS
PECOS GATEWAY INDUSTRIAL
MESA, ARIZONA - PHX22-0149-00