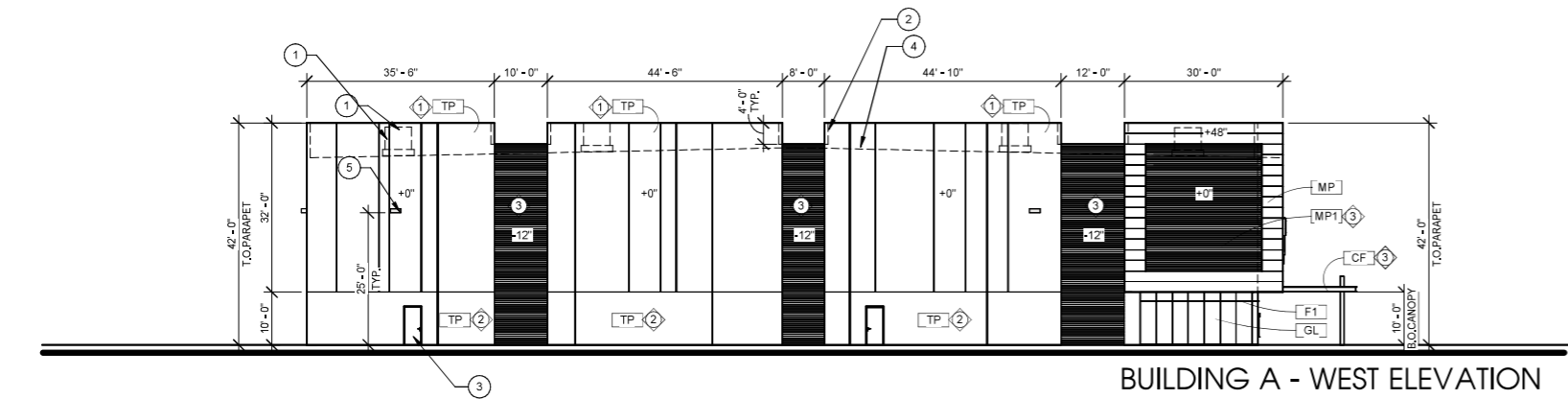
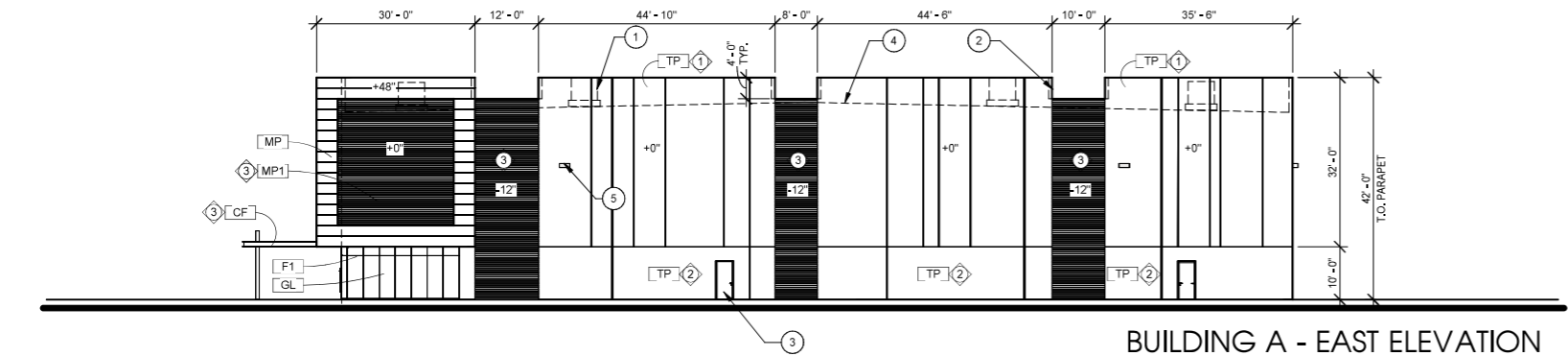


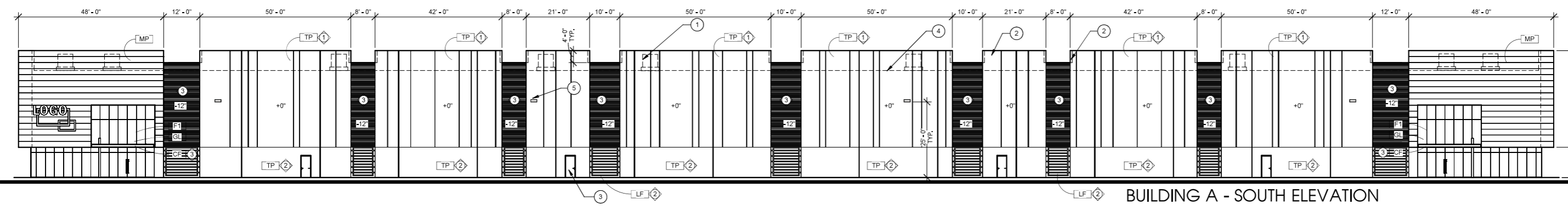
BUILDING A - NORTH ELEVATION



BUILDING A - WEST ELEVATION



BUILDING A - EAST ELEVATION



BUILDING A - SOUTH ELEVATION

MATERIAL AREA CALCULATIONS:

NORTH ELEVATION:	
CONCRETE TILT	20,752 SF 100%
TOTAL	20,752 SF 100%
WEST ELEVATION:	
CONCRETE TILT	6,413 SF 84%
CANOPY FRAME	22 SF 0%
GLAZING	223 SF 3%
METAL PANEL (MP)	431 SF 6%
METAL PANEL (MP1)	528 SF 7%
TOTAL	7,617 SF 100%
EAST ELEVATION:	
CONCRETE TILT	6,413 SF 84%
CANOPY FRAME	22 SF 0%
GLAZING	223 SF 3%
METAL PANEL (MP)	431 SF 6%
METAL PANEL (MP1)	528 SF 7%
TOTAL	7,617 SF 100%
SOUTH ELEVATION:	
CONCRETE TILT	16,960 SF 78%
CANOPY FRAME	58 SF 1%
GLAZING	1,366 SF 6%
METAL PANEL (MP)	2,484 SF 11%
LATTICE FRAME	860 SF 4%
TOTAL	21,728 SF 100%

GENERAL NOTES

- ALL SIGNAGE UNDER SEPARATE PERMIT.
- SEE STRUCTURAL FOR LINTEL INFORMATION.
- SEE DOOR SCHEDULE FOR DOOR HEIGHTS.
- SEE STRUCTURAL FOR CONTROL JOINTS.

MATERIAL SAMPLE APPROVAL

- PRIOR TO ORDERING, G.C. TO PROVIDE INDIVIDUAL SAMPLES OF ALL BUILDING COLORS AND MATERIALS FOR REVIEW AND APPROVAL BY THE ARCHITECT AND OWNER. (ie, PAINTED CMU, ETC.)
- ALL INDIVIDUAL SAMPLES TO BE PRESENTED AT ONE TIME, ONSITE IN SIZES OF NO LESS THAN 12" X 12".

MATERIAL KEY

MATERIAL	DESCRIPTION
[TP]	CONCRETE TILT PANEL
[MP]	PRE-FINISHED ARCHITECTURAL METAL PANEL - BERRIDGE "ZINC GRAY"
[MP1]	ARCHITECTURAL METAL PANEL - METAL SALES T10-B, PAINTED
[CF]	CANOPY FRAME, PAINTED
[CP]	CANOPY DECK - HAT CHANNEL, PAINTED
[LF]	LATTICE FRAME - 3" TUBE STEEL, PAINTED

(X) ELEVATIONS KEYNOTES

- FULLY SCREENED FUTURE MECHANICAL UNIT, TYP.
- 24" PARAPET RETURN - TYPICAL
- HOLLOW METAL DOOR, TYP.
- LINE OF ROOF BEYOND
- WALL PACK LIGHTING, TYP. - SEE ELECTRICAL AND PHOTOMETRIC DRAWINGS
- OVERHEAD ROLL-UP DOOR - SEE DOOR SCHEDULE

COLOR KEY

KEY	MANUF. - DUNN EDWARDS	COLOR NAME
①	'LACE VEIL'	DE6372
②	'LEGENDARY GRAY'	DE6369
③	'FLUORESCENT LIME'	DE5517

KEY	MATERIAL	NOTE
⬢	BOLLARDS	
⬢	SES	POWDER COAT TO MATCH ADJACENT WALL, BY VENDOR
⬢	TRANSFORMER	POWDER COAT TO MATCH ADJACENT WALL, BY VENDOR

- PROVIDE PRIMER AND FINISH COATS IN ACCORDANCE WITH SPECIFICATION SECTIONS 09 91 13 - EXTERIOR PAINTING, 09 91 23 - INTERIOR PAINTING.
- SEALANTS FOR PROJECTS TO MATCH ADJACENT MATERIAL COLORS - NO WHITE OR OFF WHITE COLORS.
- G.C. IS RESPONSIBLE FOR SUBMITTING ALL PRE-MANUFACTURED MATERIALS AND COLORS TO ARCHITECT FOR REVIEW AND APPROVAL. G.C. TO OBTAIN APPROVAL FROM UTILITY COMPANY BEFORE PAINTING TRANSFORMER.

STOREFRONT/GLAZING KEY

MATERIAL	COLOR
FRAMES [F1]	PRE-FINISHED STOREFRONT MANUF. ARCADIA 'BRONZE'
GLAZING [GL]	GLAZING 1" INSULATED BLUE REFLECTIVE

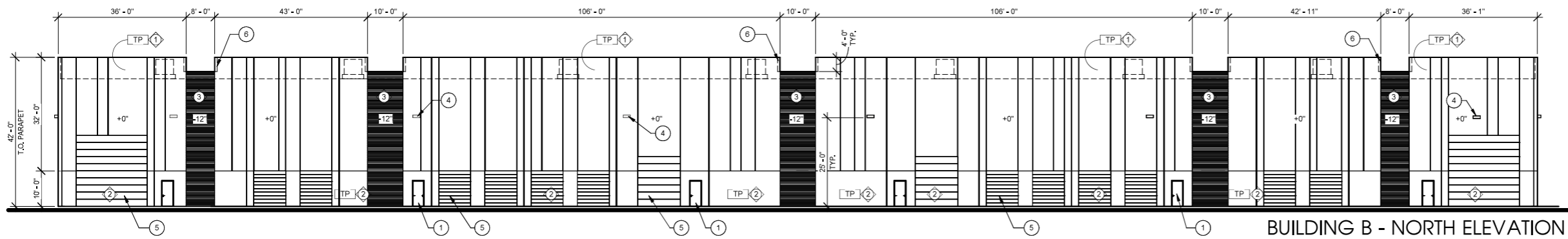
INSULATED GLAZING SYSTEM SPECIFICATION:

VITRO ARCHITECTURA GLASS OR EQUAL - 1" INSULATED GLAZING SYSTEM
 U-FACTOR: 0.29
 SOLAR HEAT GAIN COEFFICIENT (SHGC): 0.17
 OUTBOARD: 1/4" PPG SOLAR BLUE WITH SOLARCOOL REFLECTIVE (SRF #1)
 AIRSPACE: 1/2" (AIR FILLED)
 INBOARD: 1/4" PPG SOLARBAN 60 ON CLEAR (SRF #3)

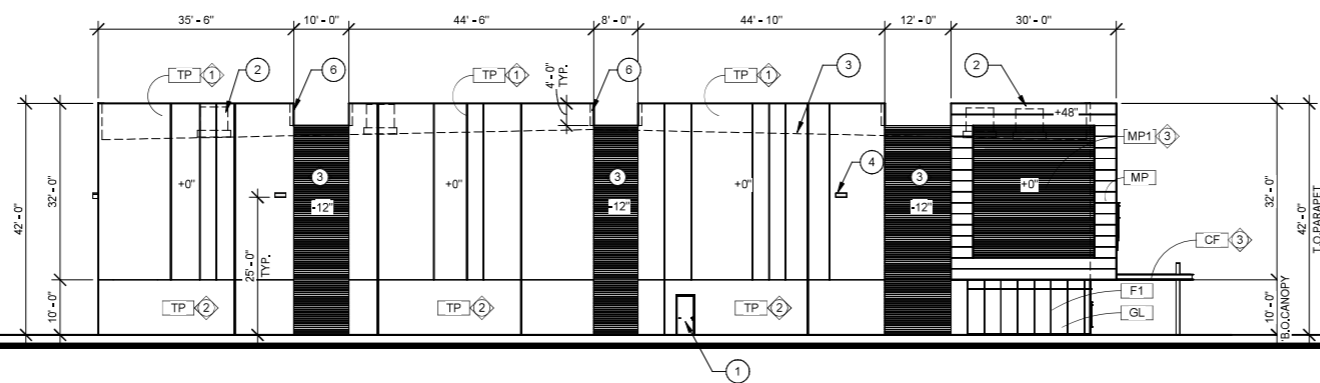
- 'S' AT WINDOW LOCATIONS INDICATES SPANDREL PANELS.
- SEE WINDOW TYPES FOR LOCATIONS OF TEMPERED GLASS.

MATERIAL AREA CALCULATIONS:

CONCRETE TILT	17,288 SF	100%
TOTAL	17,288 SF	100%



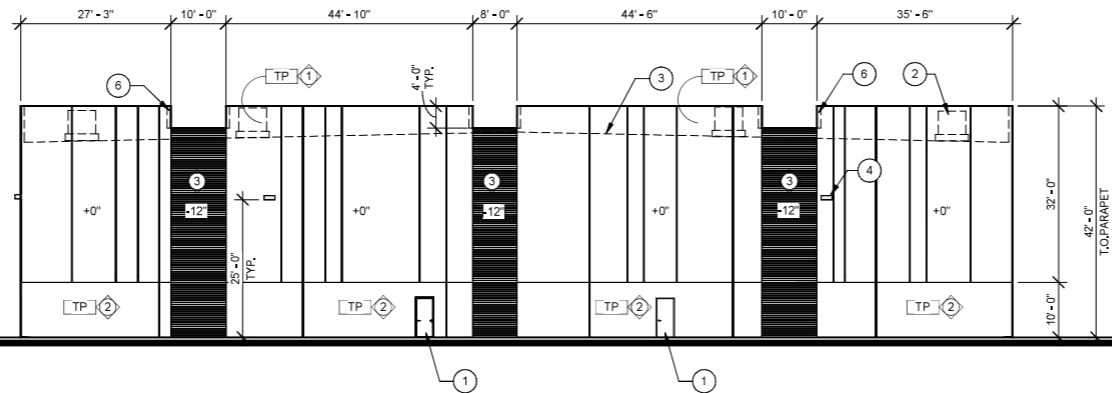
BUILDING B - NORTH ELEVATION



BUILDING B - WEST ELEVATION

MATERIAL AREA CALCULATIONS:

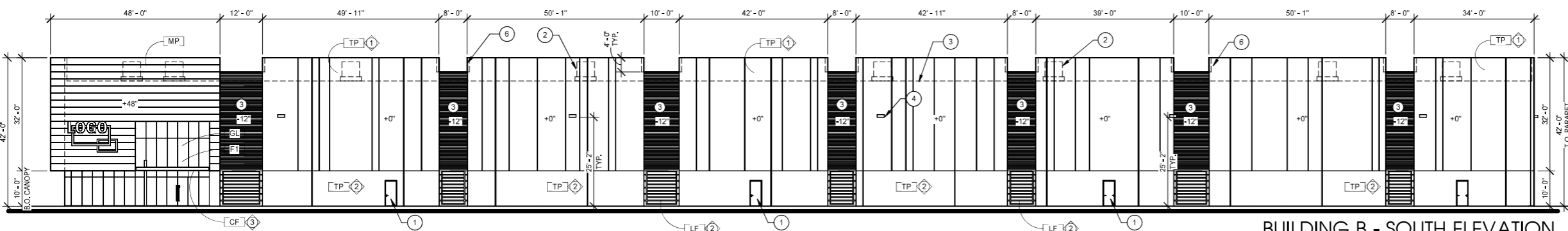
CONCRETE TILT	6,413 SF	84%
CANOPY FRAME	22 SF	0%
GLAZING	223 SF	3%
METAL PANEL (MP)	431 SF	6%
METAL PANEL (MP1)	528 SF	7%
TOTAL	7,617 SF	100%



BUILDING B - EAST ELEVATION

MATERIAL AREA CALCULATIONS:

CONCRETE TILT	7,448 SF	100%
TOTAL	7,448 SF	100%



BUILDING B - SOUTH ELEVATION

MATERIAL AREA CALCULATIONS:

CONCRETE TILT	15,969 SF	77%
CANOPY FRAME	53 SF	1%
GLAZING	1,366 SF	7%
METAL PANEL (MP)	2,484 SF	12%
LATTICE FRAME	640 SF	3%
TOTAL	19,917 SF	100%

GENERAL NOTES

- ALL SIGNAGE UNDER SEPARATE PERMIT.
- SEE STRUCTURAL FOR UNTEL INFORMATION.
- SEE DOOR SCHEDULE FOR DOOR HEIGHTS.
- SEE STRUCTURAL FOR CONTROL JOINTS.

MATERIAL SAMPLE APPROVAL

- PRIOR TO ORDERING, G.C. TO PROVIDE INDIVIDUAL SAMPLES OF ALL BUILDING COLORS AND MATERIALS FOR REVIEW AND APPROVAL BY THE ARCHITECT AND OWNER. (i.e. PAINTED CMU, ETC.)
- ALL INDIVIDUAL SAMPLES TO BE PRESENTED AT ONE TIME, ONSITE IN SIZES OF NO LESS THAN 12" X 12".

MATERIAL KEY

MATERIAL	DESCRIPTION
[TP]	CONCRETE TILT PANEL
[MP]	PRE-FINISHED ARCHITECTURAL METAL PANEL - BERRIDGE 'ZINC GRAY'
[MP1]	ARCHITECTURAL METAL PANEL - METAL SALES T10-B, PAINTED
[CF]	CANOPY FRAME, PAINTED
[CP]	CANOPY DECK - HAT CHANNEL, PAINTED
[LF]	LATTICE FRAME - 3" TUBE STEEL, PAINTED

COLOR KEY

KEY	MANUF. - DUNN EDWARDS COLOR NAME
①	'LACE VEIL' DE6372
②	'LEGENDARY GRAY' DE6369
③	'FLUORESCENT LIME' DE5517

KEY	MATERIAL	NOTE
⬢	BOLLARDS	
⬢	SES	POWDER COAT TO MATCH ADJACENT WALL, BY VENDOR
⬢	TRANSFORMER	POWDER COAT TO MATCH ADJACENT WALL, BY VENDOR

- PROVIDE PRIMER AND FINISH COATS IN ACCORDANCE WITH SPECIFICATION SECTIONS 09 91 13 - EXTERIOR PAINTING, 09 91 23 - INTERIOR PAINTING.
- SEALANTS FOR PROJECTS TO MATCH ADJACENT MATERIAL COLORS - NO WHITE OR OFF WHITE COLORS.
- G.C. IS RESPONSIBLE FOR SUBMITTING ALL PRE-MANUFACTURED MATERIALS AND COLORS TO ARCHITECT FOR REVIEW AND APPROVAL.
- G.C. TO OBTAIN APPROVAL FROM UTILITY COMPANY BEFORE PAINTING TRANSFORMER.

STOREFRONT/GLAZING KEY

MATERIAL	COLOR
FRAMES [F1]	PRE-FINISHED STOREFRONT MANUF. ARCADIA 'BRONZE'
GLAZING [GL]	GLAZING 1" INSULATED BLUE REFLECTIVE

INSULATED GLAZING SYSTEM SPECIFICATION:

VITRO ARCHITECTURA GLASS OR EQUAL - 1" INSULATED GLAZING SYSTEM

U-FACTOR: 0.29
SOLAR HEAT GAIN COEFFICIENT (SHGC) : 0.17

OUTBOARD: 1/4" PPG SOLAR BLUE WITH SOLARCOOL REFLECTIVE (SRF #1)

AIRSPACE: 1/2" (AIR FILLED)

INBOARD: 1/4" PPG SOLARBAN 60 ON CLEAR (SRF #3)

- 'S' AT WINDOW LOCATIONS INDICATES SPANDREL PANELS.
- SEE WINDOW TYPES FOR LOCATIONS OF TEMPERED GLASS.

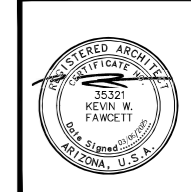
(X) ELEVATIONS KEYNOTES

- HOLLOW METAL DOOR, TYP.
- FULLY SCREENED FUTURE MECHANICAL UNIT, TYP.
- LINE OF ROOF BEYOND
- WALL PACK LIGHTING, TYP. - SEE ELECTRICAL AND PHOTOMETRIC DRAWINGS
- OVERHEAD ROLL-UP DOOR - SEE DOOR SCHEDULE
- 24" PARAPET RETURN - TYPICAL



CAWLEY ARCHITECTS
730 N. 52nd St, Ste. 203
Phoenix, Arizona 85008
P 602.393.5060

CawleyArchitects.com



EASTMARK INDUSTRIAL DEVELOPMENT

4140 SIGNAL BUTTE ROAD
MESA, AZ 85212

DATE
SITE PLAN REVIEW / DR SUBMITTAL 11-25-2024
SITE PLAN REVIEW 2ND SUBMITTAL 01-13-2025
SITE PLAN REVIEW 3RD SUBMITTAL 02-24-2025
SITE PLAN REVIEW 4TH SUBMITTAL 03-06-2025

DRAWN BY: LE

OWNERSHIP OF DOCUMENTS:
This drawing, including the architectural concept design and data, is an instrument of service and shall remain the property of Cawley Architects Inc. The drawing is for use at the location described herein and shall not be used in other locations. Any other use or release of these drawings may result in civil damages.

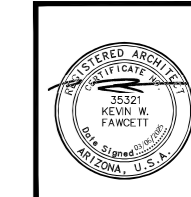
DISCREPANCIES AND CONFLICTS:
All discrepancies found in these documents or conflicts between these documents and field conditions shall be reported to Cawley Architects Inc. for resolution before the commencement of the work.

EXTERIOR ELEVATIONS

Project: 24062
AB7.1

EXTERIOR ELEVATIONS

1/16" = 1'-0"
0' 1' 8' 16' 32'



GENERAL NOTES

1. ALL SIGNAGE UNDER SEPARATE PERMIT.
2. SEE STRUCTURAL FOR UNTEL INFORMATION.
3. SEE DOOR SCHEDULE FOR DOOR HEIGHTS.
4. SEE STRUCTURAL FOR CONTROL JOINTS.

MATERIAL SAMPLE APPROVAL

1. PRIOR TO ORDERING, G.C. TO PROVIDE INDIVIDUAL SAMPLES OF ALL BUILDING COLORS AND MATERIALS FOR REVIEW AND APPROVAL BY THE ARCHITECT AND OWNER. (ie. PAINTED CMU, ETC.)
2. ALL INDIVIDUAL SAMPLES TO BE PRESENTED AT ONE TIME, ONSITE IN SIZES OF NO LESS THAN 12" X 12".

MATERIAL KEY

MATERIAL	DESCRIPTION
TP	CONCRETE TILT PANEL
CF	CANOPY FRAME, PAINTED
CD	CANOPY DECK - HAT CHANNEL, PAINTED
MC	PRE-FINISHED ARCHITECTURAL METAL CLADDING
MP	PRE-FINISHED ARCHITECTURAL METAL PANEL - BERRIDGE "ZINC GRAY"
LF	LATTICE FRAME - 3" TUBE STEEL, PAINTED

COLOR KEY

KEY	MANUF. - DUNN EDWARDS COLOR NAME:
1	'LACE VEIL' DE6372
2	'LEGENDARY GRAY' DE6369
3	'GOLDFINCH' SW6905
4	'FILTERED RAYS' DE5438

KEY	MATERIAL	NOTE
◇	BOLLARDS	
◇	SES	POWDER COAT TO MATCH ADJACENT WALL, BY VENDOR
◇	TRANSFORMER	POWDER COAT TO MATCH ADJACENT WALL, BY VENDOR

1. PROVIDE PRIMER AND FINISH COATS IN ACCORDANCE WITH SPECIFICATION SECTIONS 09 91 13 - EXTERIOR PAINTING, 09 91 23 - INTERIOR PAINTING.
2. SEALANTS FOR PROJECTS TO MATCH ADJACENT MATERIAL COLORS - NO WHITE OR OFF WHITE COLORS.
3. G.C. IS RESPONSIBLE FOR SUBMITTING ALL PRE-MANUFACTURED MATERIALS AND COLORS TO ARCHITECT FOR REVIEW AND APPROVAL.
4. G.C. TO OBTAIN APPROVAL FROM UTILITY COMPANY BEFORE PAINTING TRANSFORMER.

STOREFRONT / GLAZING KEY

MATERIAL	COLOR
FRAMES F1	PRE-FINISHED STOREFRONT 'BRONZE' MANUF. ARCADIA
GLAZING G1	1" INSULATED BLUE REFLECTIVE

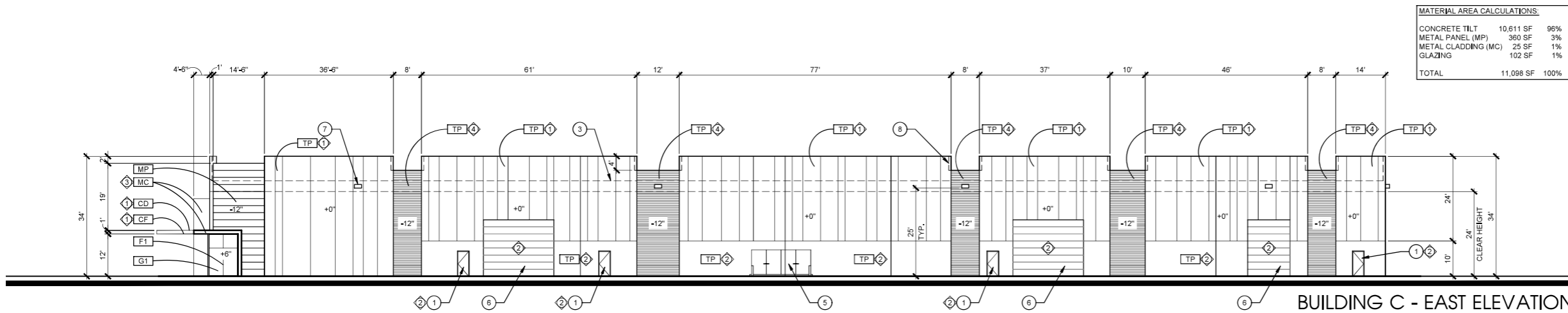
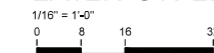
INSULATED GLAZING SYSTEM SPECIFICATION
VITRO ARCHITECTURA GLASS OR EQUAL - 1" INSULATED GLAZING SYSTEM
U-FACTOR: 0.29
SOLAR HEAT GAIN COEFFICIENT (SHGC): 0.17
OUTBOARD: 1/4" PPG SOLAR BLUE WITH SOLARCOOL REFLECTIVE (SRF #1)
AIRSPACE: 1/2" (AIR FILLED)
INBOARD: 1/4" PPG SOLARBAN 60 ON CLEAR (SRF #3)

1. 'S' AT WINDOW LOCATIONS INDICATES SPANDREL PANELS.
2. SEE WINDOW TYPES FOR LOCATIONS OF TEMPERED GLASS.

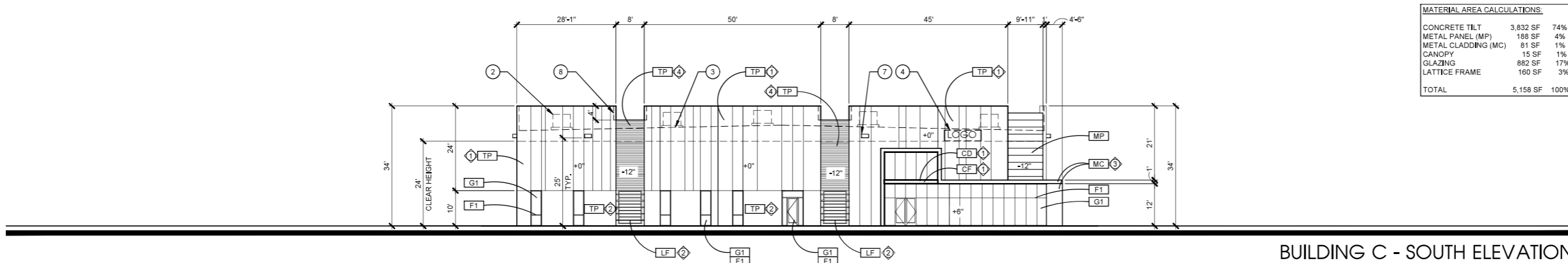
SHEET KEYNOTES

- 1 HOLLOW METAL DOOR - TYPICAL
- 2 FULLY SCREENED FUTURE MECHANICAL UNIT - TYP.
- 3 LINE OF ROOF BEYOND
- 4 SIGNAGE BY OTHERS VIA SEPARATE PERMIT
- 5 SERVICE ENTRANCE SECTION (S.E.S.) - SEE ELECTRICAL DRAWINGS
- 6 OVERHEAD ROLL-UP DOOR - TYP.
- 7 WALL PACK LIGHTING, TYP. - SEE ELECTRICAL AND PHOTOMETRIC DRAWINGS
- 8 24" PARAPET RETURN - TYPICAL

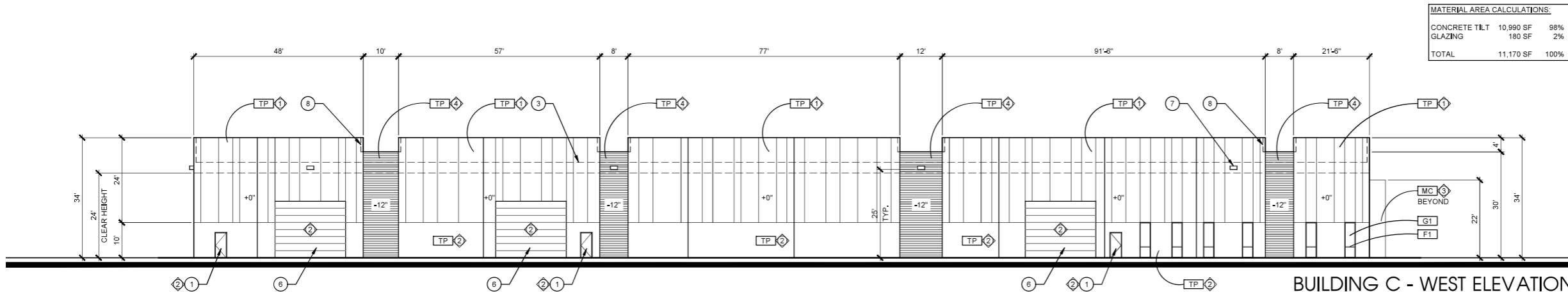
EXTERIOR ELEVATIONS



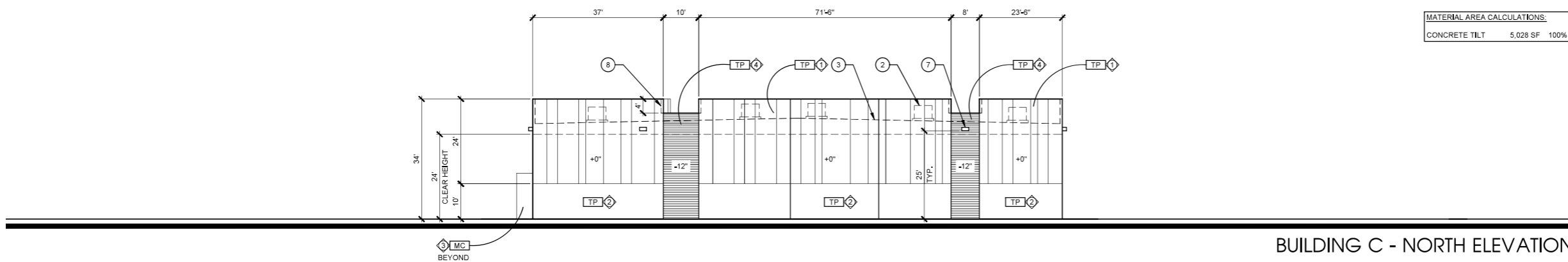
BUILDING C - EAST ELEVATION



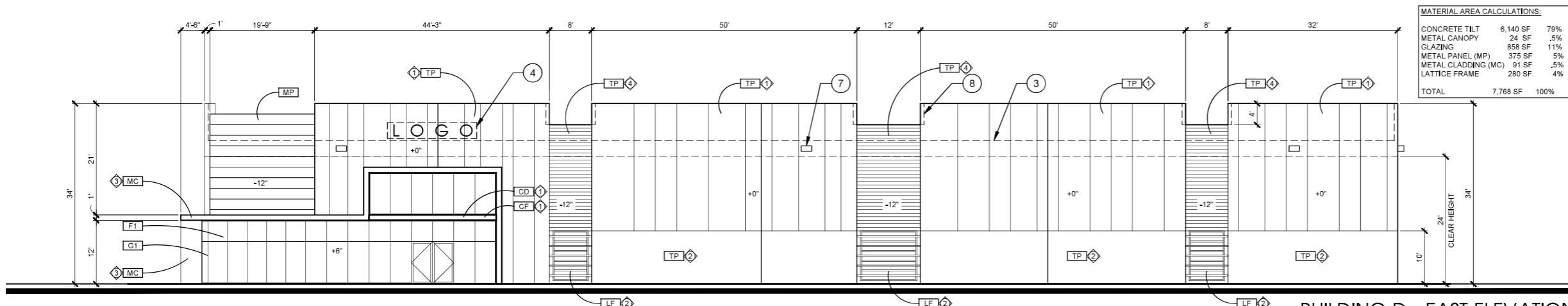
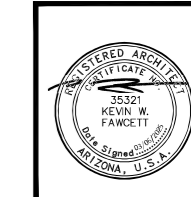
BUILDING C - SOUTH ELEVATION



BUILDING C - WEST ELEVATION



BUILDING C - NORTH ELEVATION



MATERIAL AREA CALCULATIONS:

CONCRETE TILT	6,140 SF	79%
METAL CANOPY	24 SF	.5%
GLAZING	858 SF	11%
METAL PANEL (MP)	375 SF	5%
METAL CLADDING (MC)	91 SF	.5%
LATTICE FRAME	280 SF	4%
TOTAL	7,768 SF	100%

- GENERAL NOTES**
1. ALL SIGNAGE UNDER SEPARATE PERMIT.
 2. SEE STRUCTURAL FOR UNTEL INFORMATION.
 3. SEE DOOR SCHEDULE FOR DOOR HEIGHTS.
 4. SEE STRUCTURAL FOR CONTROL JOINTS.

- MATERIAL SAMPLE APPROVAL**
1. PRIOR TO ORDERING, G.C. TO PROVIDE INDIVIDUAL SAMPLES OF ALL BUILDING COLORS AND MATERIALS FOR REVIEW AND APPROVAL BY THE ARCHITECT AND OWNER. (ie. PAINTED CMU, ETC.)
 2. ALL INDIVIDUAL SAMPLES TO BE PRESENTED AT ONE TIME, ON-SITE IN SIZES OF NO LESS THAN 12" X 12".

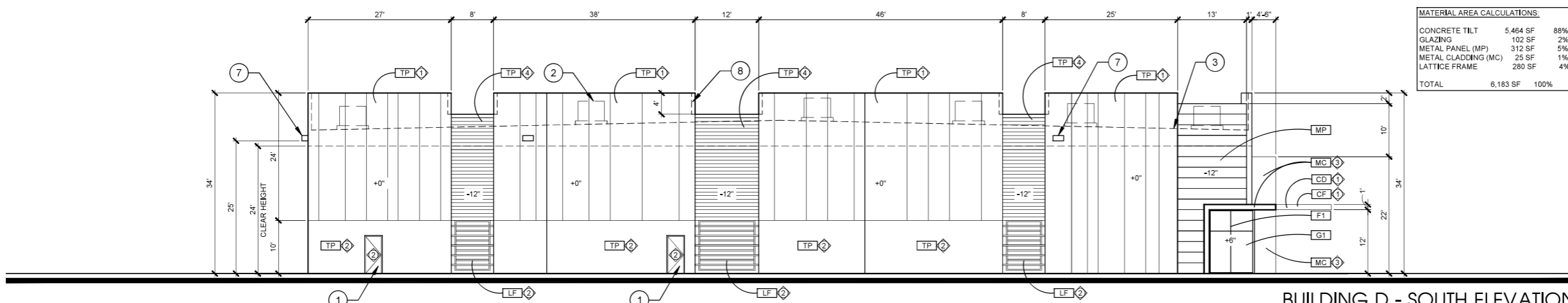
MATERIAL KEY

MATERIAL	DESCRIPTION
TP	CONCRETE TILT PANEL
CF	CANOPY FRAME, PAINTED
CD	CANOPY DECK - HAT CHANNEL, PAINTED
MC	PRE-FINISHED ARCHITECTURAL METAL CLADDING
MP	PRE-FINISHED ARCHITECTURAL METAL PANEL - BERRIDGE "ZINC GRAY"
LF	LATTICE FRAME - 3" TUBE STEEL, PAINTED

COLOR KEY

KEY	MANUF. - DUNN EDWARDS	COLOR NAME
1		'LACE VEIL' DE6372
2		'LEGENDARY GRAY' DE6369
3		'HOT JAZZ' DEA107
4		'POMEGRANATE' DE5090

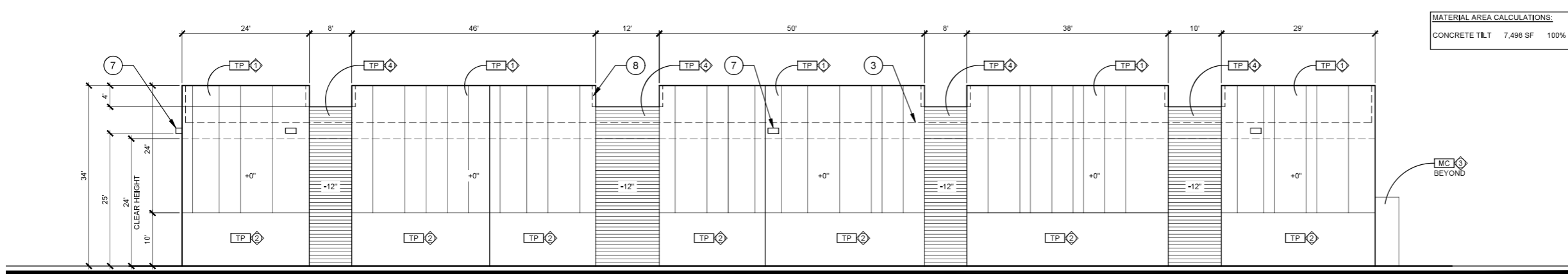
KEY	MATERIAL	NOTE
1	BOLLARDS	
2	SES	POWDER COAT TO MATCH ADJACENT WALL, BY VENDOR
3	TRANSFORMER	POWDER COAT TO MATCH ADJACENT WALL, BY VENDOR



MATERIAL AREA CALCULATIONS:

CONCRETE TILT	5,464 SF	88%
GLAZING	102 SF	2%
METAL PANEL (MP)	312 SF	5%
METAL CLADDING (MC)	25 SF	1%
LATTICE FRAME	280 SF	4%
TOTAL	6,183 SF	100%

1. PROVIDE PRIMER AND FINISH COATS IN ACCORDANCE WITH SPECIFICATION SECTIONS 09 91 13 - EXTERIOR PAINTING, 09 91 23 - INTERIOR PAINTING.
2. SEALANTS FOR PROJECTS TO MATCH ADJACENT MATERIAL COLORS - NO WHITE OR OFF WHITE COLORS.
3. G.C. IS RESPONSIBLE FOR SUBMITTING ALL PRE-MANUFACTURED MATERIALS AND COLORS TO ARCHITECT FOR REVIEW AND APPROVAL.
4. G.C. TO OBTAIN APPROVAL FROM UTILITY COMPANY BEFORE PAINTING TRANSFORMER.



MATERIAL AREA CALCULATIONS:

CONCRETE TILT	7,498 SF	100%
---------------	----------	------

STOREFRONT / GLAZING KEY

MATERIAL	COLOR	
FRAMES	F1	PRE-FINISHED STOREFRONT 'BRONZE' MANUF. ARCADIA
GLAZING	G1	1" INSULATED BLUE REFLECTIVE

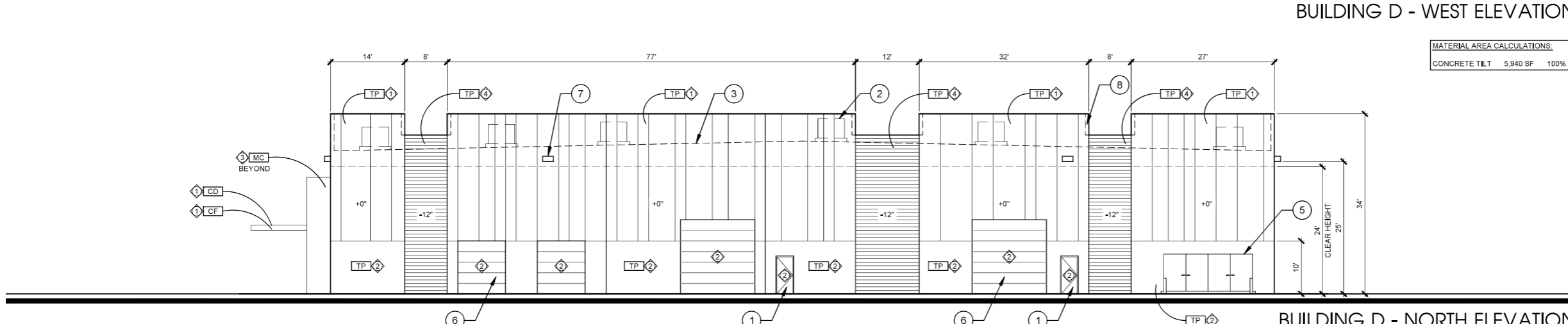
INSULATED GLAZING SYSTEM SPECIFICATION

VITRO ARCHITECTURA GLASS OR EQUAL - 1" INSULATED GLAZING SYSTEM

U-FACTOR: 0.29
SOLAR HEAT GAIN COEFFICIENT (SHGC): 0.17

OUTBOARD: 1/4" PPG SOLAR BLUE WITH SOLARCOOL REFLECTIVE (SRF #1)
AIRSPACE: 1/2" (AIR FILLED)
INBOARD: 1/4" PPG SOLARBAN 80 ON CLEAR (SRF #3)

1. 'S' AT WINDOW LOCATIONS INDICATES SPANDREL PANELS.
2. SEE WINDOW TYPES FOR LOCATIONS OF TEMPERED GLASS.



MATERIAL AREA CALCULATIONS:

CONCRETE TILT	5,940 SF	100%
---------------	----------	------

- SHEET KEYNOTES**
- 1 HOLLOW METAL DOOR - TYPICAL
 - 2 FULLY SCREENED FUTURE MECHANICAL UNIT - TYP.
 - 3 LINE OF ROOF BEYOND
 - 4 SIGNAGE BY OTHERS VIA SEPARATE PERMIT
 - 5 SERVICE ENTRANCE SECTION (S.E.S.) - SEE ELECTRICAL DRAWINGS
 - 6 OVERHEAD ROLL-UP DOOR - TYP.
 - 7 WALL PACK LIGHTING, TYP. - SEE ELECTRICAL AND PHOTOMETRIC DRAWINGS
 - 8 24" PARAPET RETURN - TYPICAL

EXTERIOR ELEVATIONS

3/32" = 1'-0"







