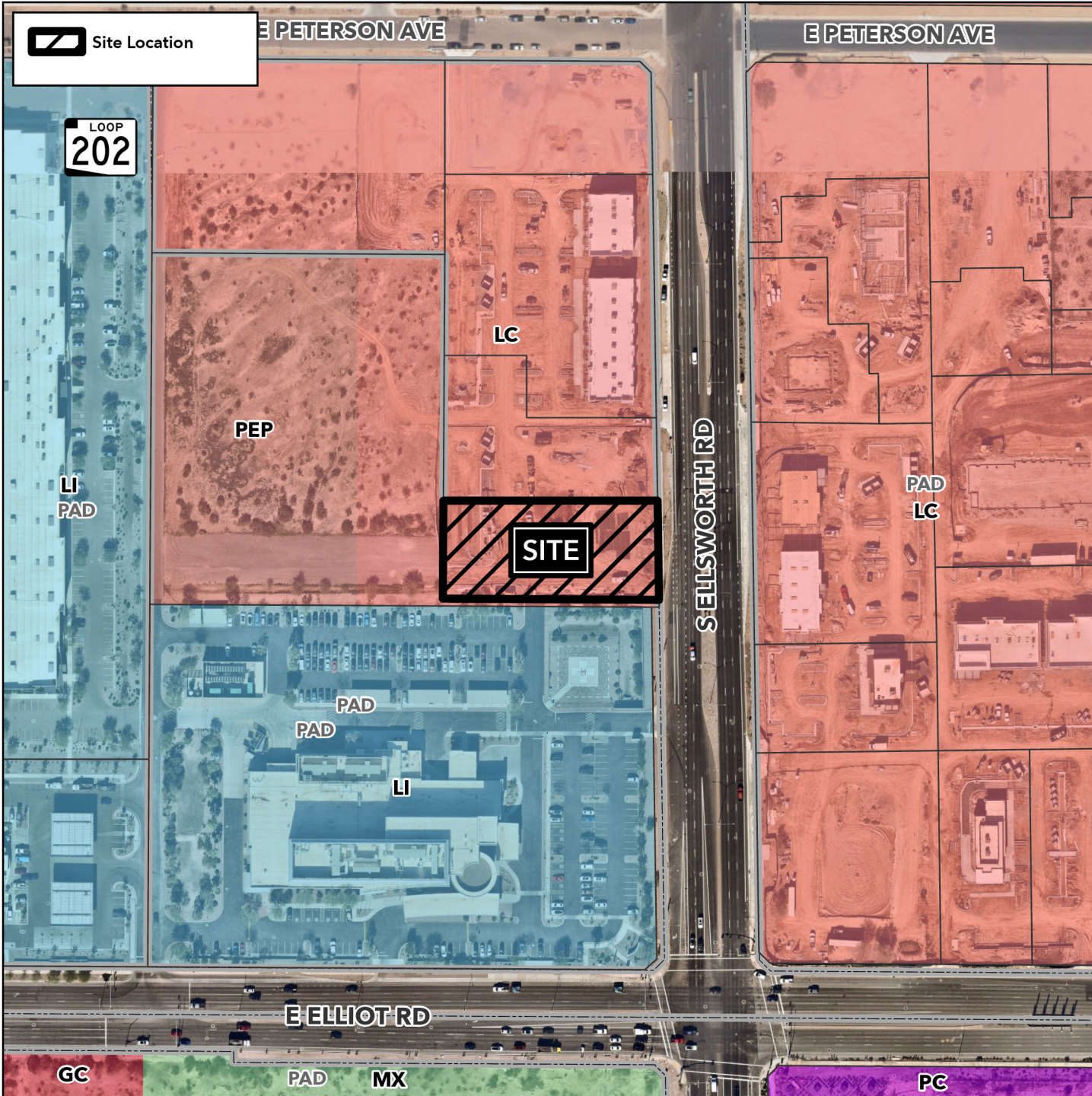


Design Review Vicinity Map: DRB25-00972

Case Details



Case:

DRB25-00972

Site / Address:

(District 6) 0.9± acres located approximately 500± feet north of the northwest corner of South Ellsworth Road and East Elliott Road.

Request:

Design Review to allow for the development of an approximately 4,897 square foot Minor Automobile/Vehicle Service facility.

