



Liquor License Map

City of Mesa Tax & Licensing

Requesting Approval:



ROCHESTERS FAMILY DINING AND SPORTSBAR

721 S ROCHESTER

License Type:

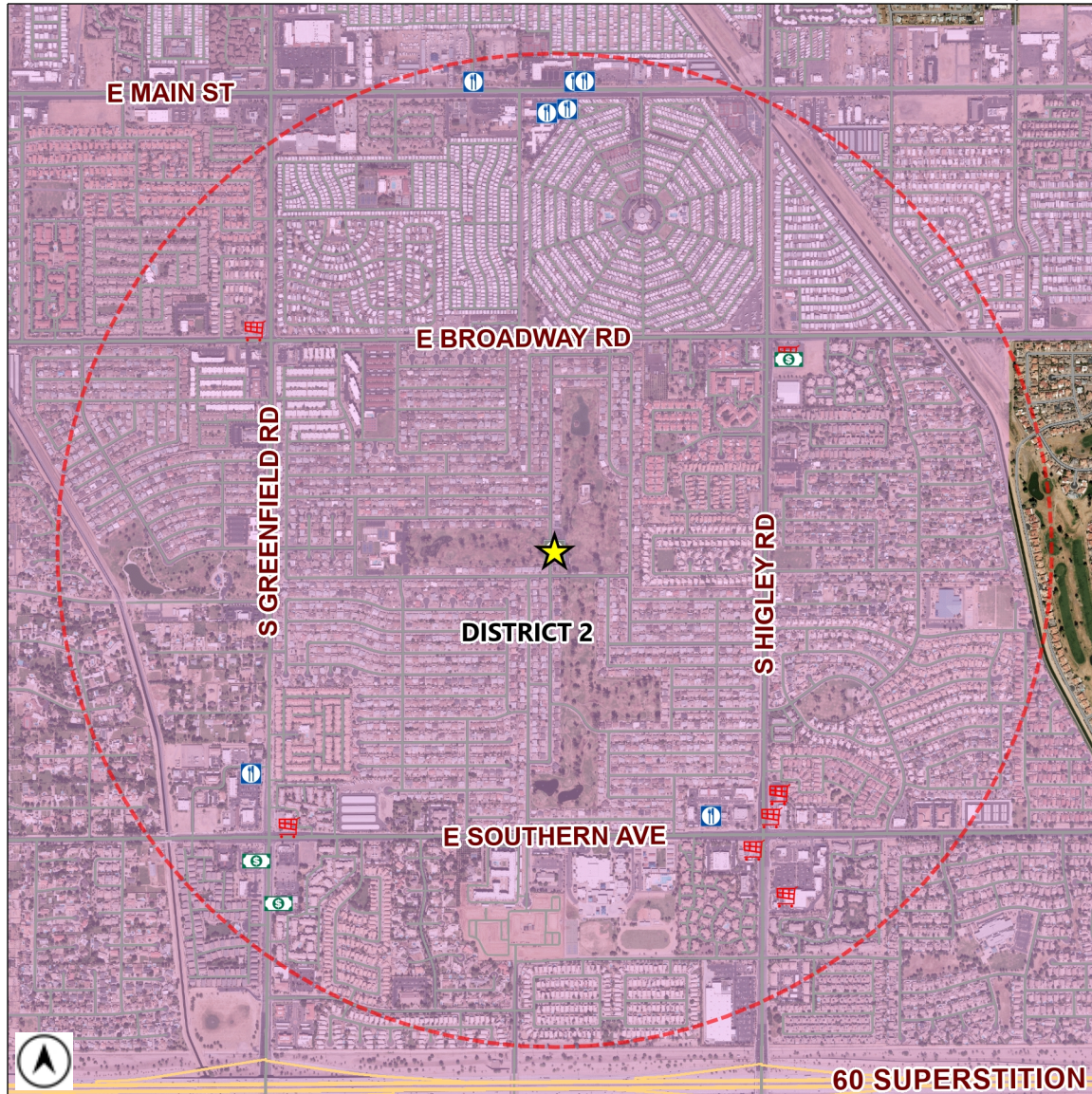
BEER / WINE BAR (PEND)

License Number:

LICA25-20499

Estimated Population (1 Mile): **13728**

Source: MAG ACS 2013-2017 5 year data



| | | | | | | | | | | | |
|--|-------------------------------------|---|--|-----------------------------|---|--|--------------------------------|---|--|----------------------|---|
| | BAR | 0 | | CLUB | 0 | | HOTEL-MOTEL | 0 | | MICRO-BREWERY | 0 |
| | BAR (PEND) | 0 | | CLUB (PEND) | 0 | | HOTEL-MOTEL (PEND) | 0 | | MICRO-BREWERY (PEND) | 0 |
| | BEER / WINE BAR | 1 | | CONVEYANCE | 0 | | IN-STATE PRODUCER | 0 | | RESTAURANT | 8 |
| | BEER / WINE BAR (PEND) | 0 | | CONVEYANCE (PEND) | 0 | | IN-STATE PRODUCER (PEND) | 0 | | RESTAURANT (PEND) | 1 |
| | BEER / WINE STORE | 8 | | DOMESTIC FARM WINERY | 0 | | LIQUOR STORE | 3 | | WHOLESALE | 0 |
| | BEER / WINE STORE (PEND) | 0 | | DOMESTIC FARM WINERY (PEND) | 0 | | LIQUOR STORE (PEND) | 0 | | WHOLESALE (PEND) | 0 |
| | BEER / WINE STORE / SAMPLING | 0 | | GOVERNMENT | 0 | | LIQUOR STORE / SAMPLING | 0 | | | |
| | BEER / WINE STORE / SAMPLING (PEND) | 0 | | GOVERNMENT (PEND) | 0 | | LIQUOR STORE / SAMPLING (PEND) | 0 | | 1 MILE BUFFER | |

Total Count: 21 liquor licenses