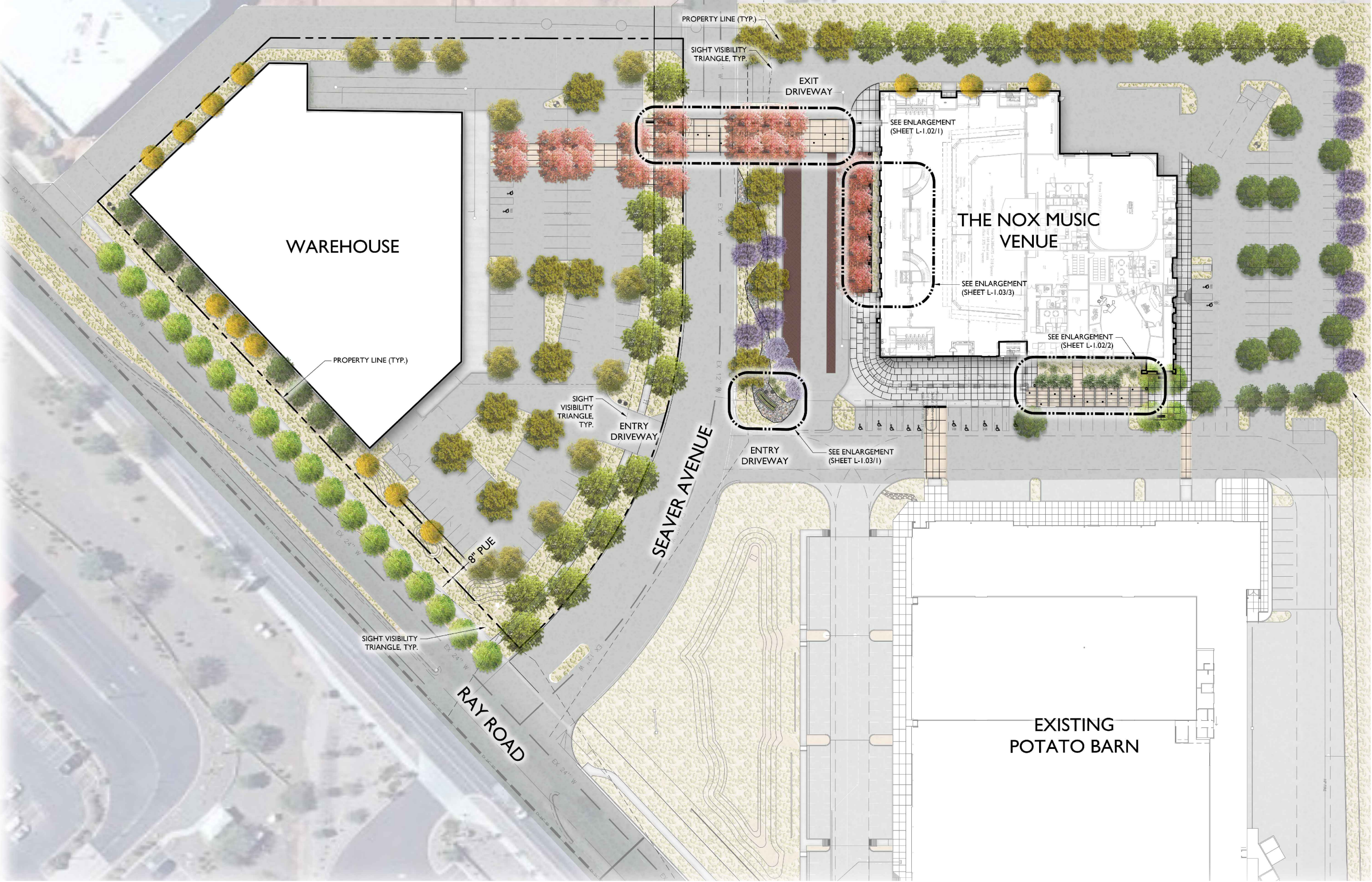
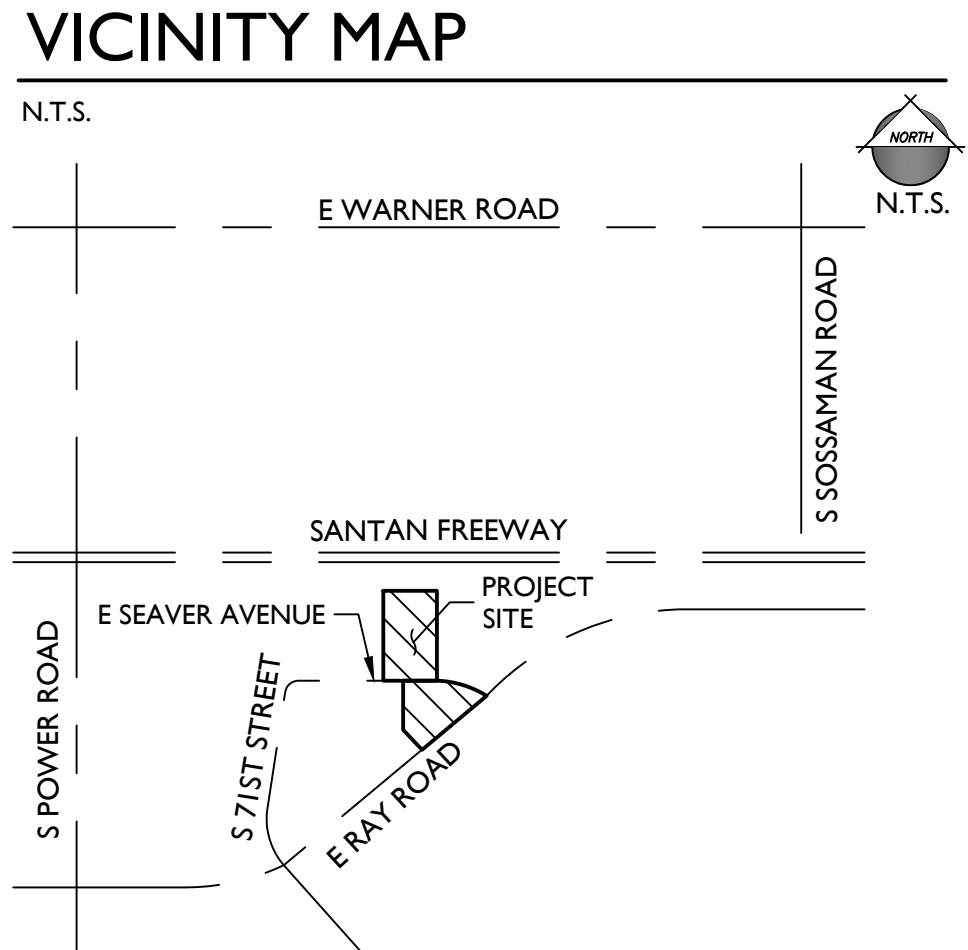


# THE NOX

## Music Performance Venue

7244 E Seaver Ave  
Mesa, Arizona 85212



**SHEET INDEX**

SHEET #	SHEET TITLE	PAGE #
L-CS	Cover Sheet	1
L-DS	Design Standards and Principles	2
L-1.01	Illustrative Master Plan	3
L-1.02 - L-1.03	Enlargement Plans	4-5
L-2.01 - L-2.03	Landscape Plan	6-8
L-3.01	Plant Imagery	9
L-4.01 - L-4.02	Color and Materials Imagery	10-11

### Preliminary Design Package

Submitted: October 21st, 2024  
Re-Submitted: November 12, 2024

**PROJECT TEAM**

**DEVELOPER:**  
**STREAMLINE DEVELOPMENT, LLC**  
1234 S. Power Rd. Suite 150  
Mesa, AZ 85206  
TEL: (480) 553-8787  
Contact: David J. Hrizak  
djh@thestreamlinecompanies.com

**ARCHITECT:**  
**ADAPTIVE ARCHITECTS**  
1630 S. Stapley Drive #229  
Mesa, AZ 85204  
(480) 655-0632  
Contact: Vincent Di Bella, AIA, CSI  
vince@adaptivearchitectsinc.com

**LANDSCAPE ARCHITECT:**  
**EPS GROUP, INC.**  
1130 N Alma School Rd, Suite 120  
Mesa, AZ 85201  
TEL: (480) 503-2250  
CONTACT: Tom Snyder, RLA  
tom.snyder@epsgroupinc.com

**CIVIL ENGINEER:**  
**EPS GROUP, INC.**  
1130 N Alma School Rd, Suite 120  
Mesa, AZ 85201  
TEL: (480) 503-2250  
CONTACT: Taylor Bills, PE  
taylor.bills@epsgroupinc.com

**IRRIGATION DESIGN:**  
**HINES INC.**  
323 W. Drake Rd, Suite 204  
Fort Collins, CO 80526  
(480) 710-7474  
Contact: Nate Hines  
nate@hinesinc.com

**STRUCTURAL ENGINEER:**  
**PH STRUCTURAL, INC.**  
2812 N. Norwalk, Suite 114  
Mesa, AZ 85215  
(480) 854-3343  
Contact: Dominic Petrocelli, PE  
dominic@phstructural.com

Phase: Design Review

**THE NOX**  
Music Performance Venue  
7244 E. Seaver Ave, Mesa, AZ 85212

Project Number: 2201	Revision Date: AS1 1 REVDAT2 REVDAT3 REVDAT4	Sheet Number: <b>L-CS</b>
Date: 11/12/2024		

S:\Projects\2022\22-0943\landscapes\Drawings\preliminary\plans\22-0943 - L-CS - Cover Sheet.dwg 11.12.24 2:06pm ABuckley

# DESIGN STANDARDS & PRINCIPLES for THE NOX

## Design Problem

How do we design a space that promotes a music inspired venue that blends modern living with an old-world Chicago theme in the desert?

## Design Solution

Provide a landscape that immerses the user into the music scene upon arrival to the venue through the use of different hardscape materials and planting that create a unique and cohesive experience.

## Design Narrative & Principles

The Nox is approximately a 3-acre new entertainment, commercial project that will provide the City of Mesa a music venue that blends an Old Chicago vibe to the valley. There will be a direct connection to the existing Potato Barn that has previously housed music nights for locals to come and enjoy. In addition this venue will be in close proximity to Phoenix-Mesa Gateway Airport and the 202 freeway, making this a suitable location for users to easily access.

- Create a pedestrian experience through wayfinding as you arrive to the venue that blends itself to the overall theme of Old Chicago with focal points, colorful landscape and site material choices.
- Create a space that connects the architectural elements to the outdoor environment through the use of cohesive materials and colors.
- Provide thought-out spatial programming that attributes to the musical nature of the venue whilst blending the native desert environment through a landscape palette that brings the Midwest feel to the desert.
- Provide moments of musical elements that are incorporated into the hardscape and landscape design for users to feel immersed in the music scene.



To distill the essence of this project and the design direction, we chose these five words or phrases to guide the process.

1. Cohesive Theme
2. Connectivity
3. Wayfinding
4. Musical
5. Old Chicago Vibe

Phase Design Review		
THE NOX Music Performance Venue 7244 E. Seaver Ave, Mesa, AZ 85212		
Project Number: 2201	Revision Date: AS1 1 REVDAT2 REVDAT3 REVDAT4	Sheet Number: <b>L-DS</b>
Date: 11/12/2024		

### KEYNOTES

- |                                 |                       |
|---------------------------------|-----------------------|
| ① SIDEWALK                      | ⑩ PARKING             |
| ② ENTRANCE PLAZA                | ⑪ LANDSCAPE AREA      |
| ③ OUTDOOR GATHERING PATIO       | ⑫ TRASH ENCLOSURE     |
| ④ PEDESTRIAN PROMENADE/CROSSING | ⑬ DECORATIVE PLANTERS |
| ⑤ ENTRY SIGNAGE                 | ⑭ SERVICE YARD        |
| ⑥ BENCH                         | ⑮ LOADING DOCK        |
| ⑦ TREE GRATE                    | ⑯ LANDSCAPE BERM      |
| ⑧ LITTER RECEPTACLE             | ⑰ PARKING SCREEN WALL |
| ⑨ VALET PARKING                 |                       |

### MATERIALS LEGEND

SYMBOL	ITEM	SIZE & COLOR
	Decomposed Granite with Planting	1/2" Screened - 2" deep Color: Mahogany
	Angular Rock	3"-8" Color: Mahogany
	Integral Concrete Paving	Color: Omaha Tan
	Standard Concrete Paving	Color: Standard Grey
	Pedestrian Brick Pavers	
	Vehicular Brick Pavers	

### PLANT LEGEND

SYMBOL	SCIENTIFIC NAME	COMMON NAME	SIZE
<b>TREES</b>			
	Acacia farnesiana	Sweet Acacia	24" Box
	Acacia salicina	Willow Acacia	24" Box
	Bauhinia lunarioides	Anacacho Orchid Tree	24" Box
	Bauhinia purpurea	Purple Orchid Tree	24" Box
	Caesalpinia cacalaco 'Smoothie'	Thornless Cascalote	24" Box
	Fraxinus velutina 'Fan Tex'	Fan Tex Ash	24" Box
	Olea europaea 'Swan Hill'	'Swan Hill' Olive	24" Box
	Pistacia x 'Red Push'	Red Push Pistache	36" Box
	Phoenix roebelenii	Pygmy Palm	24" Box
	Quercus virginiana	Cathedral Live Oak	36" Box
	Ulmus parvifolia	Chinese Evergreen Elm	24" Box
	Vitex agnus-castus	Chaste Tree	24" Box

### SHRUBS/ACCENTS

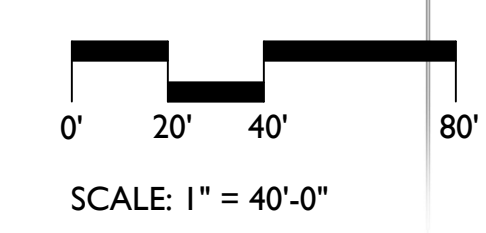
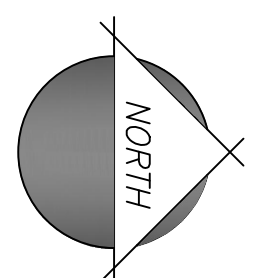
SYMBOL	COMMON NAME	SIZE
	Twin Flowered Agave	5 Gal
	Medicinal Aloe	5 Gal
	Blonde Ambition	5 Gal
	Bougainvillea Vine	5 Gal
	Red Bird of Paradise	5 Gal
	'Valentine' Emu Bush	5 Gal
	San Marcos Hibiscus	5 Gal
	Brakelights Red Yucca	5 Gal
	Mexican Honeysuckle	5 Gal
	Rio Bravo Sage	5 Gal
	'Regal Mist' Muhly	5 Gal
	Lady's Slipper	5 Gal
	Cape Plumbago	5 Gal
	Mexican Petunia	5 Gal
	Sparky Tacoma	5 Gal

### GROUNDCOVERS

SYMBOL	COMMON NAME	SIZE
	Trailing Purple Lantana	1 Gal
	New Gold Lantana	1 Gal
	Yellow Dot	1 Gal
	Katie Ruella	1 Gal
	Dwarf Elephant Food	5 Gal



S:\Projects\2022\22-0943\landscape\Drawings\preliminary plans\22-0943 - L-1-01 - Illustrative Plan.dwg 11.12.24 2:08pm ABuckley



		Phase	Design Review
		<b>THE NOX</b> Music Performance Venue 7244 E. Seaver Ave, Mesa, AZ 85212	
Project Number:	Revision Date:	Sheet Number:	
2201	ASI 1 REVDAT2 REVDAT3 REVDAT4	<b>L-1.01</b>	
Date:	11/12/2024		

### KEYNOTES

- |                                 |                       |
|---------------------------------|-----------------------|
| ① SIDEWALK                      | ⑫ TRASH ENCLOSURE     |
| ② ENTRANCE PLAZA                | ⑬ FIRE HYDRANT (TYP.) |
| ③ OUTDOOR GATHERING PATIO       | ⑭ SERVICE YARD        |
| ④ PEDESTRIAN PROMENADE/CROSSING | ⑮ LOADING DOCK        |
| ⑤ ENTRY SIGNAGE                 | ⑯ LANDSCAPE BERM      |
| ⑥ BENCH                         | ⑰ PARKING SCREEN WALL |
| ⑦ TREE GRATE                    |                       |
| ⑧ LITTER RECEPTACLE             |                       |
| ⑨ VALET PARKING                 |                       |
| ⑩ PARKING                       |                       |
| ⑪ LANDSCAPE AREA                |                       |

### MATERIALS LEGEND

SYMBOL	ITEM	SIZE & COLOR
	Decomposed Granite with Planting	1/2" Screened - 2" deep Color: Mahogany
	Angular Rock	3"-8" Color: Mahogany
	Integral Concrete Paving	Color: Omaha Tan
	Standard Concrete Paving	Color: Standard Grey
	Pedestrian Brick Pavers	
	Vehicular Brick Pavers	

### PLANT LEGEND

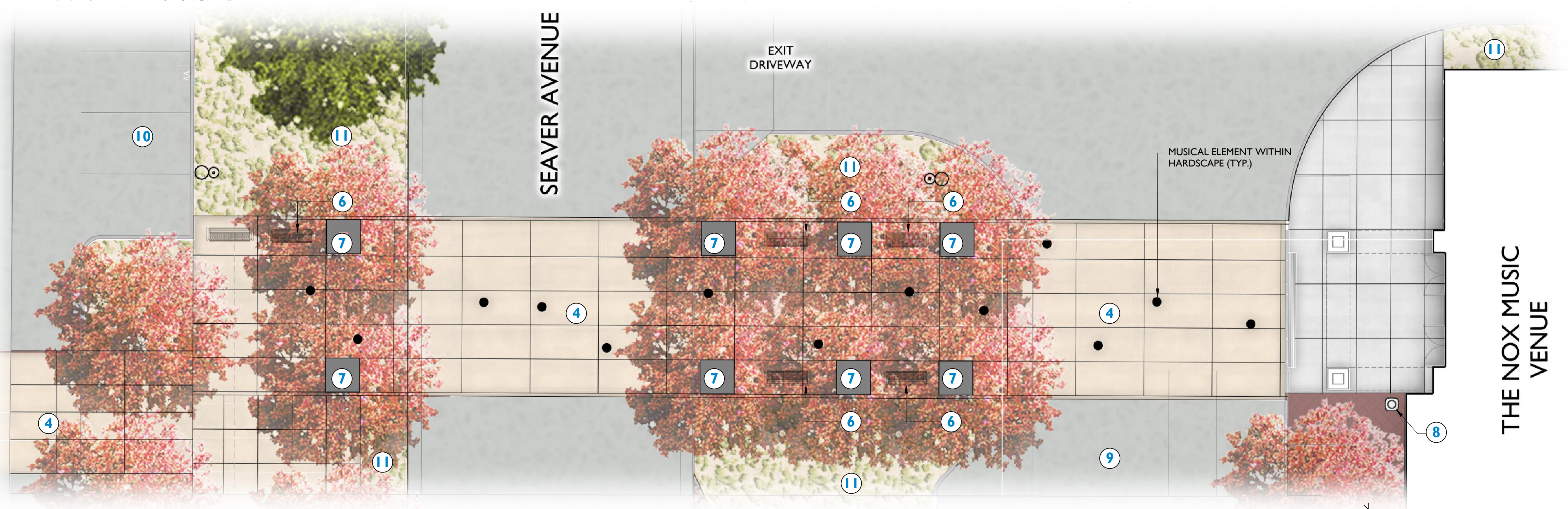
SYMBOL	SCIENTIFIC NAME	COMMON NAME	SIZE
<b>TREES</b>			
	Acacia farnesiana	Sweet Acacia	24" Box
	Acacia salicina	Willow Acacia	24" Box
	Bauhinia lunarioides	Anacacho Orchid Tree	24" Box
	Bauhinia purpurea	Purple Orchid Tree	24" Box
	Caesalpinia cacalaco 'Smoothie'	Thornless Cascalote	24" Box
	Fraxinus velutina 'Fan Tex'	Fan Tex Ash	24" Box
	Olea europaea 'Swan Hill'	'Swan Hill' Olive	24" Box
	Pistacia x 'Red Push'	Red Push Pistache	36" Box
	Phoenix roebelenii	Pygmy Palm	24" Box
	Quercus virginiana	Cathedral Live Oak	36" Box
	Ulmus parvifolia	Chinese Evergreen Elm	24" Box
	Vitex agnus-castus	Chaste Tree	24" Box

### SHRUBS/ACCENTS

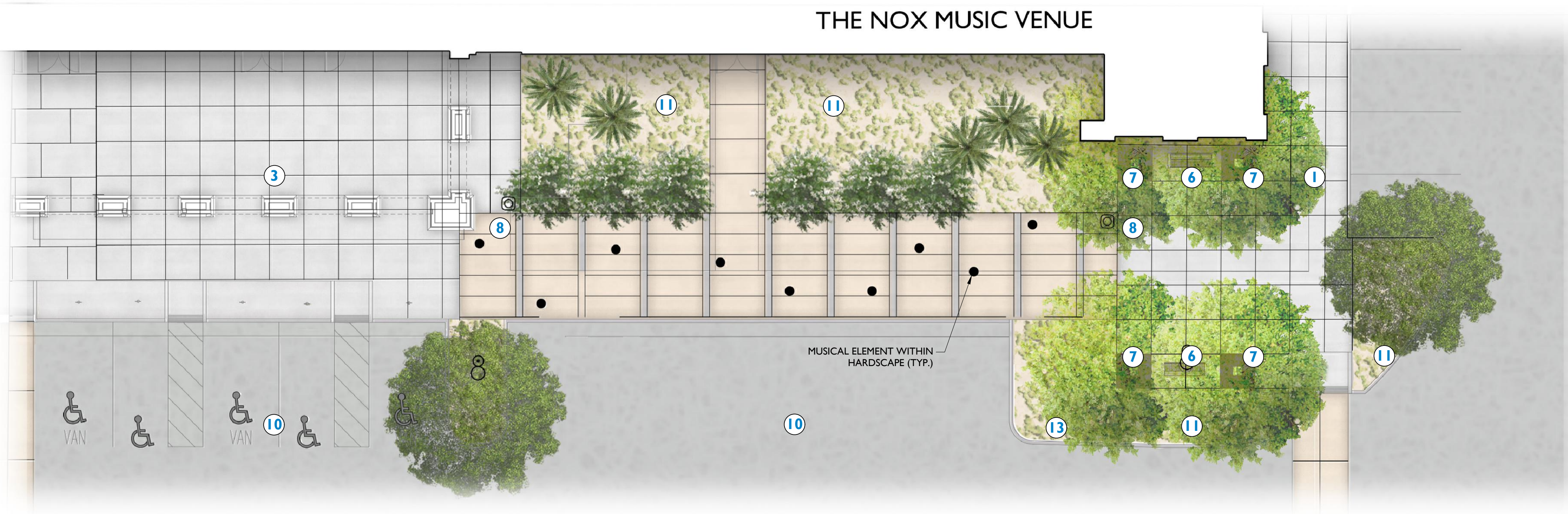
SYMBOL	COMMON NAME	SIZE
	Twin Flowered Agave	5 Gal
	Medicinal Aloe	5 Gal
	Blonde Ambition	5 Gal
	Bougainvillea Vine	5 Gal
	Red Bird of Paradise	5 Gal
	'Valentine' Emu Bush	5 Gal
	San Marcos Hibiscus	5 Gal
	Brakelights Red Yucca	5 Gal
	Mexican Honeysuckle	5 Gal
	Rio Bravo Sage	5 Gal
	'Regal Mist' Muhly	5 Gal
	Lady's Slipper	5 Gal
	Cape Plumbago	5 Gal
	Mexican Petunia	5 Gal
	Sparky Tacoma	5 Gal

### GROUNDCOVERS

SYMBOL	COMMON NAME	SIZE
	Trailing Purple Lantana	1 Gal
	New Gold Lantana	1 Gal
	Yellow Dot	1 Gal
	Katie Ruella	1 Gal
	Dwarf Elephant Food	5 Gal



**1 PEDESTRIAN PROMENADE/CROSSING ENLARGEMENT**  
Scale: 1'-0" = 10'-0"



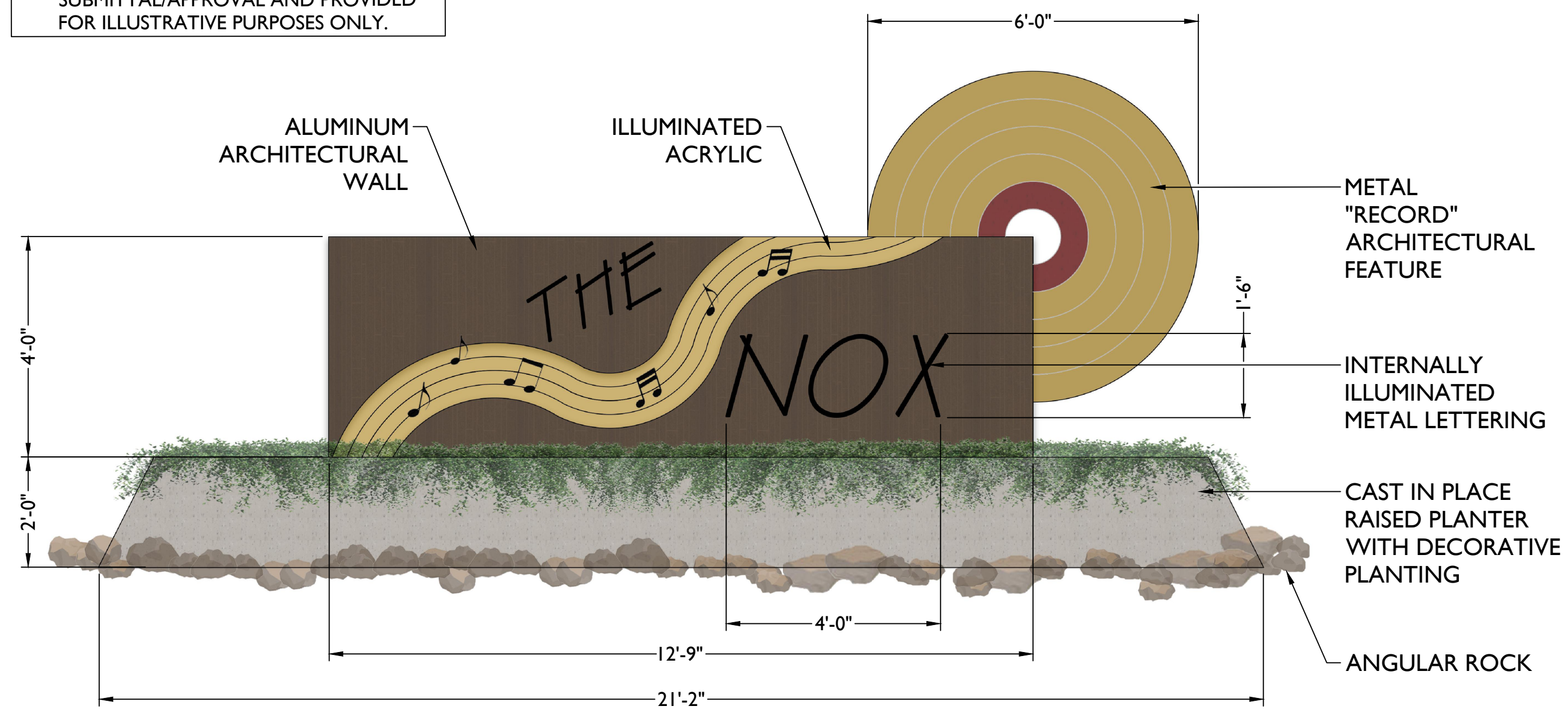
**2 EAST PROMENADE ENLARGEMENT**  
Scale: 1'-0" = 10'-0"

		Phase
		Design Review
<b>THE NOX</b> Music Performance Venue 7244 E. Seaver Ave, Mesa, AZ 85212		
Project Number: <b>2201</b>	Revision Date: ASI 1 REVDAT2 REVDAT3 REVDAT4	Sheet Number: <b>L-1.02</b>
Date: <b>11/12/2024</b>		



**1 ENTRY MONUMENT ENLARGEMENT**  
Scale: 1/2" = 10'-0"

**NOTE:**  
1. SIGN LOCATION AND DESIGN TO BE DETERMINED UNDER SEPARATE SUBMITTAL/APPROVAL AND PROVIDED FOR ILLUSTRATIVE PURPOSES ONLY.



**2 ENTRY MONUMENT ELEVATION**  
Scale: 1/2" = 1'-0"

**MATERIALS LEGEND**

SYMBOL	ITEM	SIZE & COLOR
	Decomposed Granite with Planting	1/2" Screened - 2" deep Color: Mahogany
	Angular Rock	3"-8" Color: Mahogany
	Integral Concrete Paving	Color: Omaha Tan
	Standard Concrete Paving	Color: Standard Grey
	Pedestrian Brick Pavers	
	Vehicular Brick Pavers	

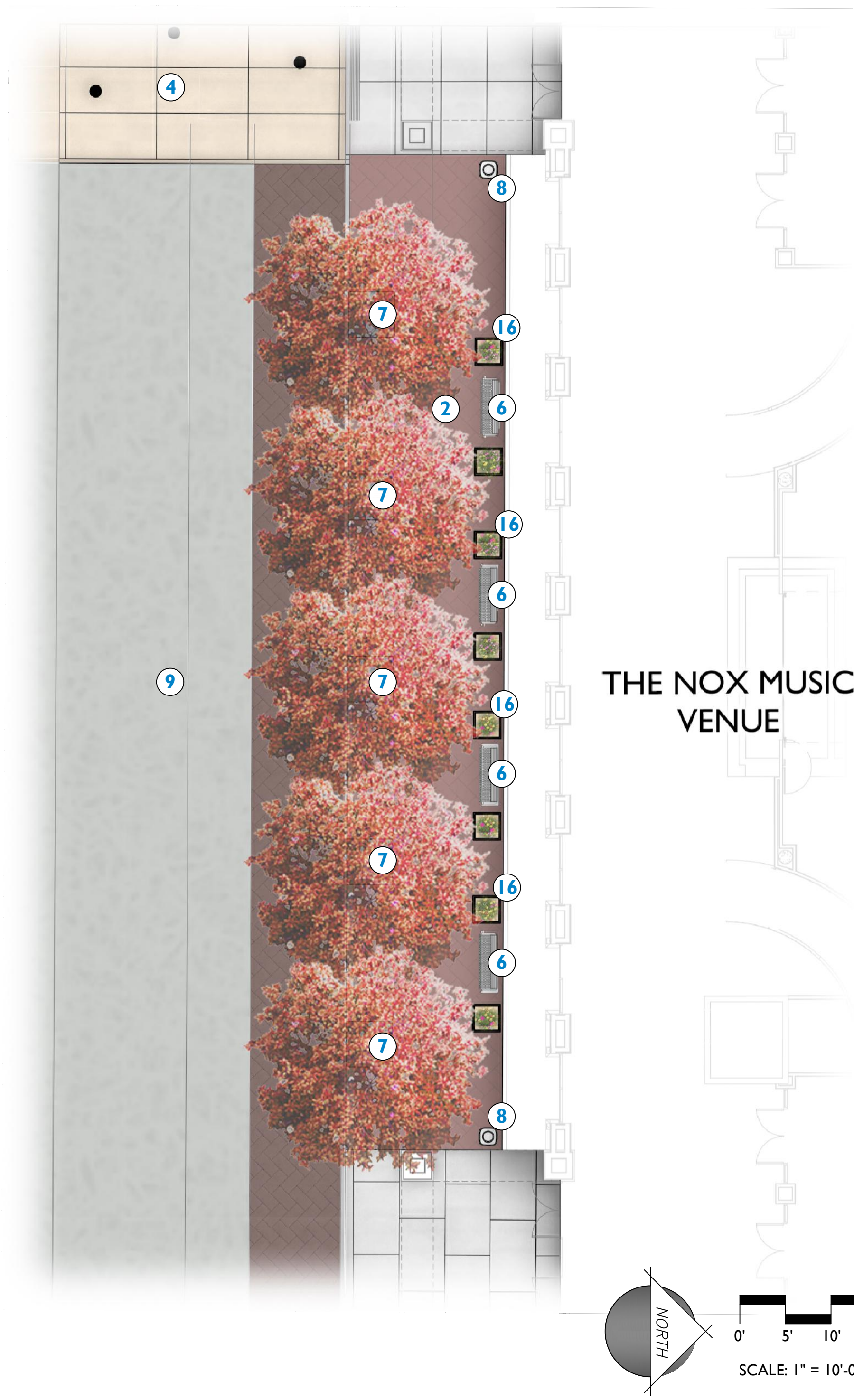
**PLANT LEGEND**

SYMBOL	SCIENTIFIC NAME	COMMON NAME	SIZE
<b>TREES</b>			
	Acacia farnesiana	Sweet Acacia	24" Box
	Acacia salicina	Willow Acacia	24" Box
	Bauhinia lunaroides	Anacacho Orchid Tree	24" Box
	Bauhinia purpurea	Purple Orchid Tree	24" Box
	Caesalpinia cacalaco 'Smoothie'	Thornless Cascalote	24" Box
	Fraxinus velutina 'Fan Tex'	Fan Tex Ash	24" Box
	Olea europaea 'Swan Hill'	'Swan Hill' Olive	24" Box
	Pistacia x 'Red Push'	Red Push Pistache	36" Box
	Phoenix roebelenii	Pygmy Palm	24" Box
	Quercus virginiana	Cathedral Live Oak	36" Box
	Ulmus parvifolia	Chinese Evergreen Elm	24" Box
	Vitex agnus-castus	Chaste Tree	24" Box

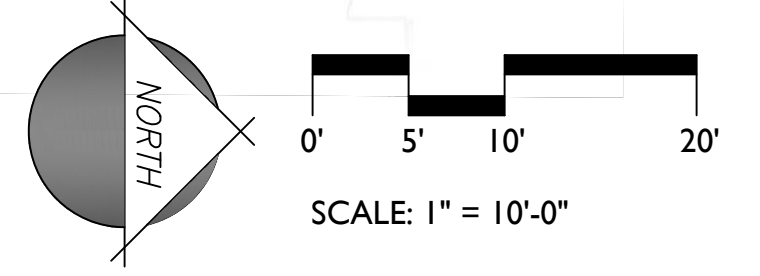
SYMBOL	COMMON NAME	SIZE
<b>SHRUBS/ACCENTS</b>		
	Agave geminiflora	Twin Flowered Agave 5 Gal
	Aloe barbadensis	Medicinal Aloe 5 Gal
	Bouteloua gracilis	Blonde Ambition 5 Gal
	Bougainvillea species	Bougainvillea Vine 5 Gal
	Caesalpinia pulcherrima	Red Bird of Paradise 5 Gal
	Eremophila maculata 'Valentine'	'Valentine' Emu Bush 5 Gal
	Gossypium harknessii	San Marcos Hibiscus 5 Gal
	Hesperaloe parviflora 'Brakelights'	Brakelights Red Yucca 5 Gal
	Justicia spicigera	Mexican Honeysuckle 5 Gal
	Leucophyllum langmaniae 'Rio Bravo'	Rio Bravo Sage 5 Gal
	Muhlenbergia capillaris 'Regal Mist'	'Regal Mist' Muhly 5 Gal
	Pedilanthus macrocarpus	Lady's Slipper 5 Gal
	Plumbago auriculata	Cape Plumbago 5 Gal
	Ruella brittoniana	Mexican Petunia 5 Gal
	Tecoma x 'Sparky'	Sparky Tacoma 5 Gal

SYMBOL	COMMON NAME	SIZE
<b>GROUNDCOVERS</b>		
	Lantana montevidensis	Trailing Purple Lantana 1 Gal
	Lantana x 'New Gold'	New Gold Lantana 1 Gal
	Sphagneticola trilobata	Yellow Dot 1 Gal
	Ruella brittoniana 'Katie'	Katie Ruella 1 Gal
	Portulacaria afra minima	Dwarf Elephant Food 5 Gal

KEYNOTE	DESCRIPTION
1	SIDEWALK
2	ENTRANCE PLAZA
3	OUTDOOR GATHERING PATIO
4	PEDESTRIAN PROMENADE/CROSSING
5	ENTRY SIGNAGE
6	BENCH
7	TREE GRATE
8	LITTER RECEPTACLE
9	VALET PARKING
10	PARKING
11	LANDSCAPE AREA
12	TRASH ENCLOSURE
13	FIRE HYDRANT (TYP.)
14	SERVICE YARD
15	LOADING DOCK
16	DECORATIVE PLANTER
17	PARKING SCREEN WALL



**3 ENTRANCE PLAZA ENLARGEMENT**  
Scale: 1/2" = 10'-0"



Phase  
Design Review

**THE NOX**  
Music Performance Venue  
7244 E. Seaver Ave, Mesa, AZ 85212

Project Number: <b>2201</b>	Revision Date: AS1 1 REVDATE2 REVDATE3 REVDATE4	Sheet Number: <b>L-1.03</b>
Date: 11/12/2024		

S:\Projects\2022\22-0943\landscape\preliminary plans\22-0943 - L-1.03 - Entrance - Plans.dwg 11.12.24 2:09pm ABuckley

### LANDSCAPE DATA

GROSS SITE AREA	354,885 SF (8.1 ACRES)
LANDSCAPE AREA	55,344 S.F
LANDSCAPE COVERAGE	16%

### CITY OF MESA PLANT DATA

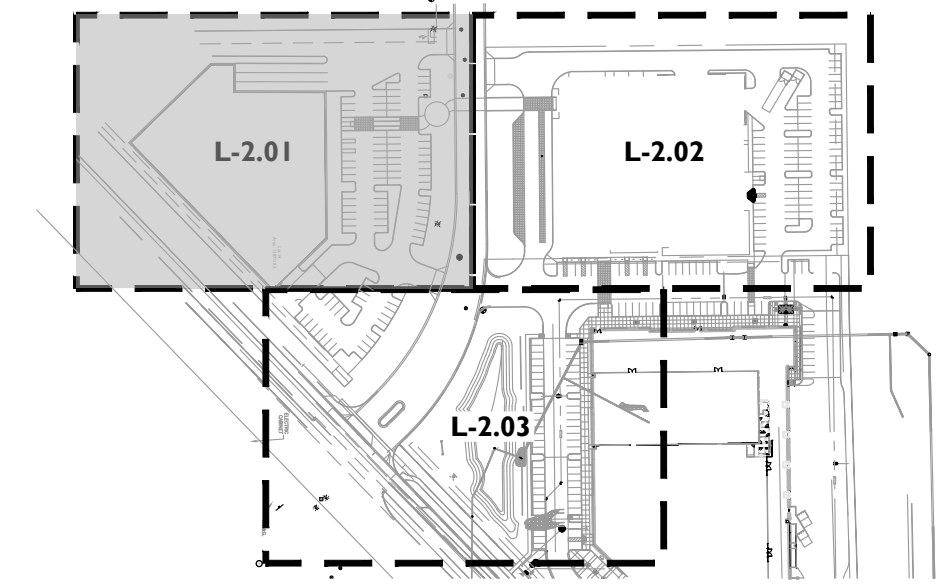
RAY ROAD FRONTAGE (470 L.F.)	REQUIRED	PROVIDED
1 TREE & 6 SHRUBS PER 25 L.F. OF STREET FRONTAGE	19 TREES 113 SHRUBS	19 TREES 113 SHRUBS
SEAVER AVE FRONTAGE (416 L.F.)	REQUIRED	PROVIDED
1 TREE & 6 SHRUBS PER 25 L.F. OF STREET FRONTAGE	17 TREES 100 SHRUBS	17 TREES 100 SHRUBS
PROPERTY PERIMETER 763 L.F.)	REQUIRED	PROVIDED
3 NON DECIDUOUS TREE PER 100 L.F.	23 TREES 152 SHRUBS	23 TREES 152 SHRUBS

FOUNDATION BASE (1,819 L.F.)	REQUIRED	PROVIDED
1 TREE PER 50 L.F. OF EXTERIOR BUILDING WALL	36 TREES	36 TREES
10% OF FOUNDATION BASE TREES TO BE 36" BOX SIZE TREES	4 TREES	26 TREES
TREE SIZE (SITE WIDE)	REQUIRED	PROVIDED
36" BOX (25% MIN.)	38 TREES	44 TREES
24" BOX (50% MIN.)	76 TREES	107 TREES
		<b>TOTAL: 151</b>

### MATERIALS LEGEND

SYMBOL	ITEM	SIZE & COLOR	QTY
	Decomposed Granite with Planting	1/2" Screened - 2" deep Color: Mahogany	63,750 SF
	Angular Rock	3"-8" Color: Mahogany	1,589 SF

### KEY MAP

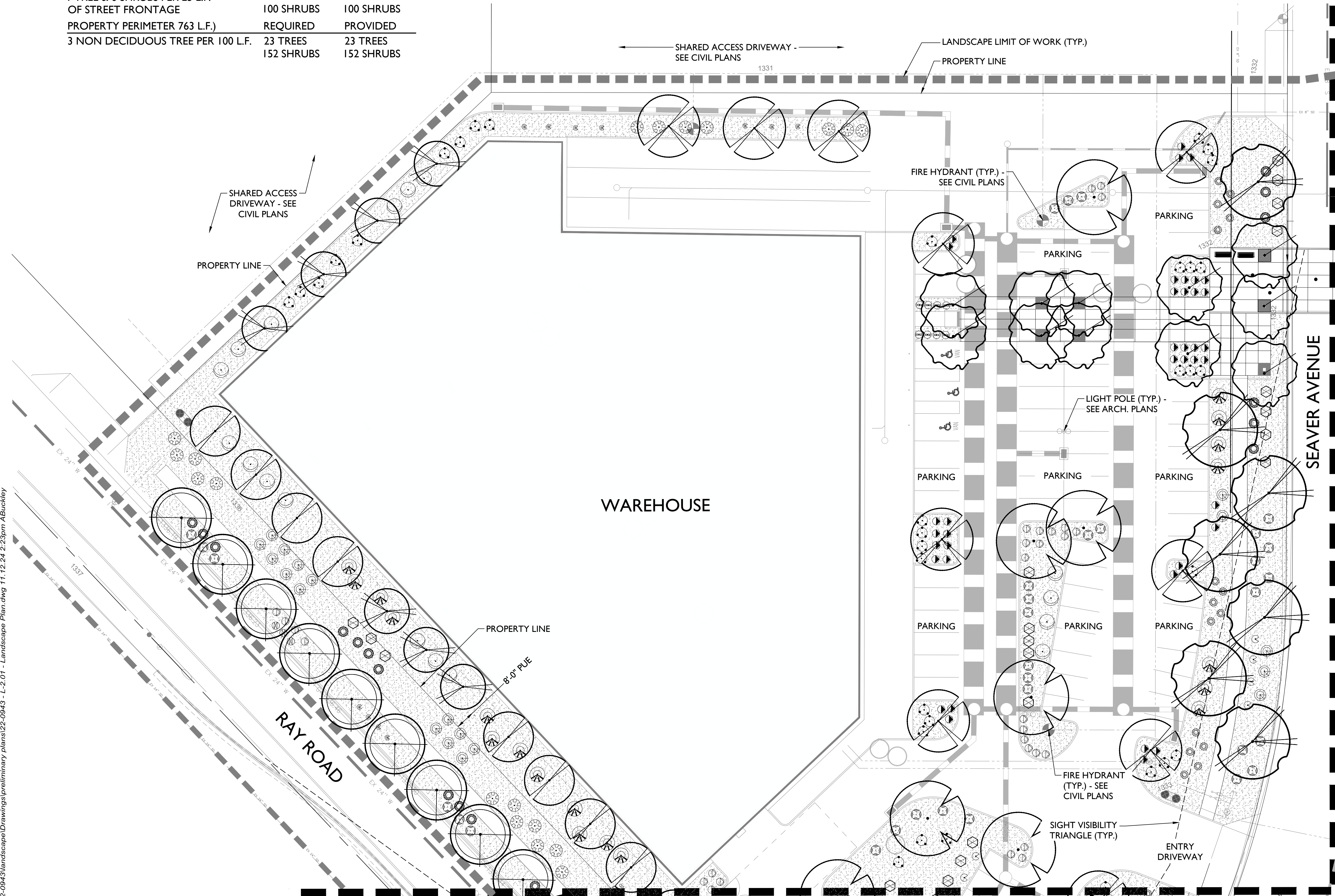


### PLANT LEGEND

SYMBOL	SCIENTIFIC NAME	COMMON NAME	SIZE	QTY
<b>TREES</b>				
	<i>Acacia farnesiana</i>	Sweet Acacia	24" Box	13
	<i>Acacia salicina</i>	Willow Acacia	24" Box	11
	<i>Bauhinia lunarioides</i>	Anacacho Orchid Tree	24" Box	6
	<i>Bauhinia purpurea</i>	Purple Orchid Tree	24" Box	3
	<i>Caesalpinia cacalaco</i> 'Smoothie'	Thornless Cascalote	24" Box	13
	<i>Fraxinus velutina</i> 'Fan Tex'	Fan Tex Ash	24" Box	18
	<i>Olea europaea</i> 'Swan Hill'	'Swan Hill' Olive	24" Box	15
	<i>Pistacia</i> x 'Red Push'	Red Push Pistache	36" Box	22
	<i>Phoenix roebelenii</i>	Pygmy Palm	24" Box	15
	<i>Quercus virginiana</i>	Cathedral Live Oak	36" Box	22
	<i>Ulmus parvifolia</i>	Chinese Evergreen Elm	24" Box	22
	<i>Vitex agnus-castus</i>	Chaste Tree	24" Box	13

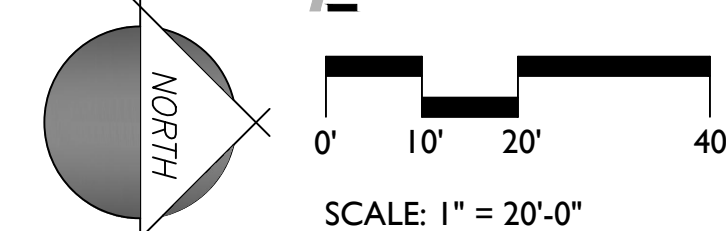
SYMBOL	SCIENTIFIC NAME	COMMON NAME	SIZE	QTY
<b>SHRUBS/ACCENTS</b>				
	<i>Agave geminiflora</i>	Twin Flowered Agave	5 Gal	14
	<i>Aloe barbadensis</i>	Medicinal Aloe	5 Gal	45
	<i>Bouteloua gracilis</i>	Blonde Ambition	5 Gal	78
	<i>Bougainvillea</i> species	Bougainvillea Vine	5 Gal	17
	<i>Caesalpinia pulcherrima</i>	Red Bird of Paradise	5 Gal	38
	<i>Eremophila macuata</i> 'Valentine'	'Valentine' Emu Bush	5 Gal	74
	<i>Gossypium harknessii</i>	San Marcos Hibiscus	5 Gal	53
	<i>Hesperaloe parviflora</i> 'Brakelights'	Brakelights Red Yucca	5 Gal	28
	<i>Justicia spicigera</i>	Mexican Honeysuckle	5 Gal	46
	<i>Leucophyllum langmaniae</i> 'Rio Bravo'	Rio Bravo Sage	5 Gal	48
	<i>Muhlenbergia capillaris</i> 'Regal Mist'	'Regal Mist' Muhly	5 Gal	51
	<i>Pedilanthus macrocarpus</i>	Lady's Slipper	5 Gal	8
	<i>Plumbago auriculata</i>	Cape Plumbago	5 Gal	28
	<i>Ruella brittoniana</i>	Mexican Petunia	5 Gal	94
	<i>Tecoma</i> x 'Sparky'	Sparky Tacoma	5 Gal	65

SYMBOL	SCIENTIFIC NAME	COMMON NAME	SIZE	QTY
<b>GROUNDCOVERS</b>				
	<i>Lantana montevidensis</i>	Trailing Purple Lantana	1 Gal	72
	<i>Lantana</i> x 'New Gold'	New Gold Lantana	1 Gal	121
	<i>Sphagneticola trilobata</i>	Yellow Dot	1 Gal	45
	<i>Ruella brittoniana</i> 'Katie'	Katie Ruella	1 Gal	74
	<i>Portulacaria afra minima</i>	Dwarf Elephant Food	5 Gal	11



MATCHLINE: SHEET L-2.02

MATCHLINE: SHEET L-2.03



Phase  
**Design Review**

**THE NOX**  
Music Performance Venue  
7244 E. Seaver Ave, Mesa, AZ 85212

Project Number:  
**2201**

Date:  
**11/12/2024**

Revision Date:

- ASI 1
- REVDATE2
- REVDATE3
- REVDATE4

Sheet Number:  
**L-2.01**

S:\Projects\2022\12-0943\landscape\Drawings\preliminary plans\22-0943 - L-2.01 - Landscape Plan.dwg 11.12.24 2:23pm ABuckley

**LANDSCAPE DATA**

GROSS SITE AREA	354,885 SF (8.1 ACRES)
LANDSCAPE AREA	55,344 S.F
LANDSCAPE COVERAGE	16%

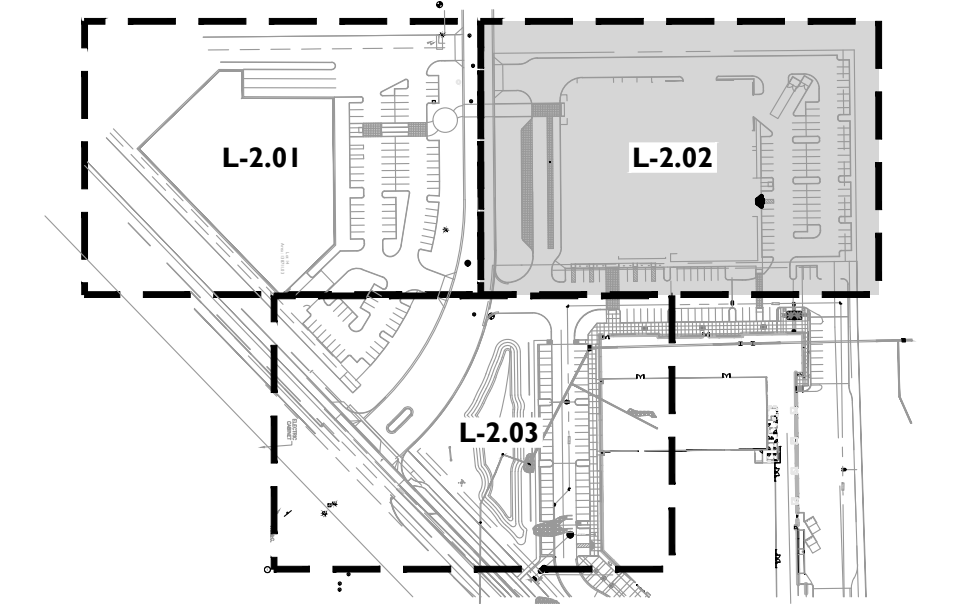
**CITY OF MESA PLANT DATA**

RAY ROAD FRONTAGE (470 L.F.)	REQUIRED	PROVIDED	FOUNDATION BASE (1,819 L.F.)	REQUIRED	PROVIDED
1 TREE & 6 SHRUBS PER 25 L.F. OF STREET FRONTAGE	19 TREES	19 TREES	1 TREE PER 50 L.F. OF EXTERIOR BUILDING WALL	36 TREES	36 TREES
SEAVER AVE FRONTAGE (416 L.F.)	REQUIRED	PROVIDED	10% OF FOUNDATION BASE TREES TO BE 36" BOX SIZE TREES	4 TREES	26 TREES
1 TREE & 6 SHRUBS PER 25 L.F. OF STREET FRONTAGE	17 TREES	17 TREES	TREE SIZE (SITE WIDE)	REQUIRED	PROVIDED
PROPERTY PERIMETER 763 L.F.)	100 SHRUBS	100 SHRUBS	36" BOX (25% MIN.)	38 TREES	44 TREES
3 NON DECIDUOUS TREE PER 100 L.F.	23 TREES	23 TREES	24" BOX (50% MIN.)	76 TREES	107 TREES
	152 SHRUBS	152 SHRUBS			
					<b>TOTAL: 151</b>

**MATERIALS LEGEND**

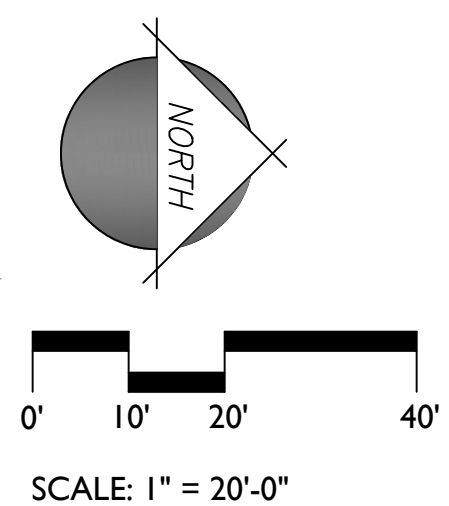
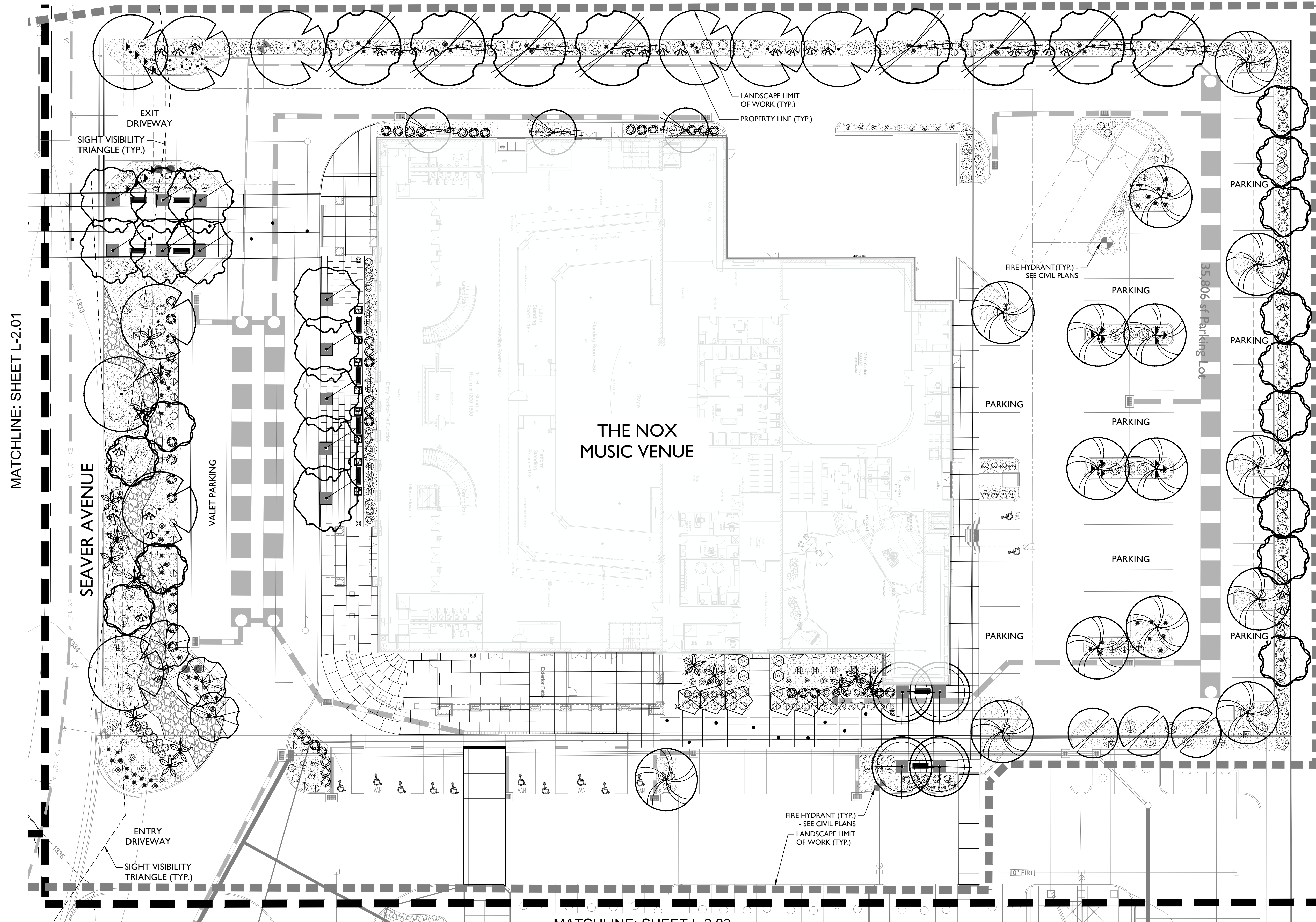
SYMBOL	ITEM	SIZE & COLOR	QTY
	Decomposed Granite with Planting	1/2" Screened - 2" deep Color: Mahogany	63,750 SF
	Angular Rock	3"-8" Color: Mahogany	1,589 SF

**KEY MAP**



**PLANT LEGEND**

SYMBOL	SCIENTIFIC NAME	COMMON NAME	SIZE	QTY
<b>TREES</b>				
	<i>Acacia farnesiana</i>	Sweet Acacia	24" Box	13
	<i>Acacia salicina</i>	Willow Acacia	24" Box	11
	<i>Bauhinia lunarioides</i>	Anacacho Orchid Tree	24" Box	6
	<i>Bauhinia purpurea</i>	Purple Orchid Tree	24" Box	3
	<i>Caesalpinia cacalaco</i> 'Smoothie'	Thornless Cascalote	24" Box	13
	<i>Fraxinus velutina</i> 'Fan Tex'	Fan Tex Ash	24" Box	18
	<i>Olea europaea</i> 'Swan Hill'	'Swan Hill' Olive	24" Box	15
	<i>Pistacia</i> x 'Red Push'	Red Push Pistache	36" Box	22
	<i>Phoenix roebelenii</i>	Pygmy Palm	24" Box	15
	<i>Quercus virginiana</i>	Cathedral Live Oak	36" Box	22
	<i>Ulmus parvifolia</i>	Chinese Evergreen Elm	24" Box	22
	<i>Vitex agnus-castus</i>	Chaste Tree	24" Box	13
<b>SHRUBS/ACCENTS</b>				
	<i>Agave geminiflora</i>	Twin Flowered Agave	5 Gal	14
	<i>Aloe barbadensis</i>	Medicinal Aloe	5 Gal	45
	<i>Bouteloua gracilis</i>	Blonde Ambition	5 Gal	78
	<i>Bougainvillea</i> species	Bougainvillea Vine	5 Gal	17
	<i>Caesalpinia pulcherrima</i>	Red Bird of Paradise	5 Gal	38
	<i>Eremophila macuata</i> 'Valentine'	'Valentine' Emu Bush	5 Gal	74
	<i>Gossypium harknessii</i>	San Marcos Hibiscus	5 Gal	53
	<i>Hesperaloe parviflora</i> 'Brakelights'	Brakelights Red Yucca	5 Gal	28
	<i>Justicia spicigera</i>	Mexican Honeysuckle	5 Gal	46
	<i>Leucophyllum langmaniae</i> 'Rio Bravo'	Rio Bravo Sage	5 Gal	48
	<i>Muhlenbergia capillaris</i> 'Regal Mist'	'Regal Mist' Muhly	5 Gal	51
	<i>Pedilanthus macrocarpus</i>	Lady's Slipper	5 Gal	8
	<i>Plumbago auriculata</i>	Cape Plumbago	5 Gal	28
	<i>Ruellia brittoniana</i>	Mexican Petunia	5 Gal	94
	<i>Tecoma</i> x 'Sparky'	Sparky Tacoma	5 Gal	65
<b>GROUNDCOVERS</b>				
	<i>Lantana montevidensis</i>	Trailing Purple Lantana	1 Gal	72
	<i>Lantana</i> x 'New Gold'	New Gold Lantana	1 Gal	121
	<i>Sphagneticola trilobata</i>	Yellow Dot	1 Gal	45
	<i>Ruellia brittoniana</i> 'Katie'	Katie Ruellia	1 Gal	74
	<i>Portulacaria afra</i> minima	Dwarf Elephant Food	5 Gal	11



40702  
THOMAS E.  
SNYDER

Phase  
**Design Review**

**THE NOX**  
Music Performance Venue  
7244 E. Seaver Ave, Mesa, AZ 85212

Project Number: <b>2201</b>	Revision Date: ▲ ASI 1 ▲ REVDATE2 ▲ REVDATE3 ▲ REVDATE4	Sheet Number: <b>L-2.02</b>
Date: <b>11/12/2024</b>		

S:\Projects\2022\22-0943\landscape\Drawings\preliminary plans\22-0943 - L-2.01 - Landscape Plan.dwg 11.12.24 2:23pm ABuckley

### LANDSCAPE DATA

GROSS SITE AREA	354,885 SF (8.1 ACRES)
LANDSCAPE AREA	55,344 S.F
LANDSCAPE COVERAGE	16%

### CITY OF MESA PLANT DATA

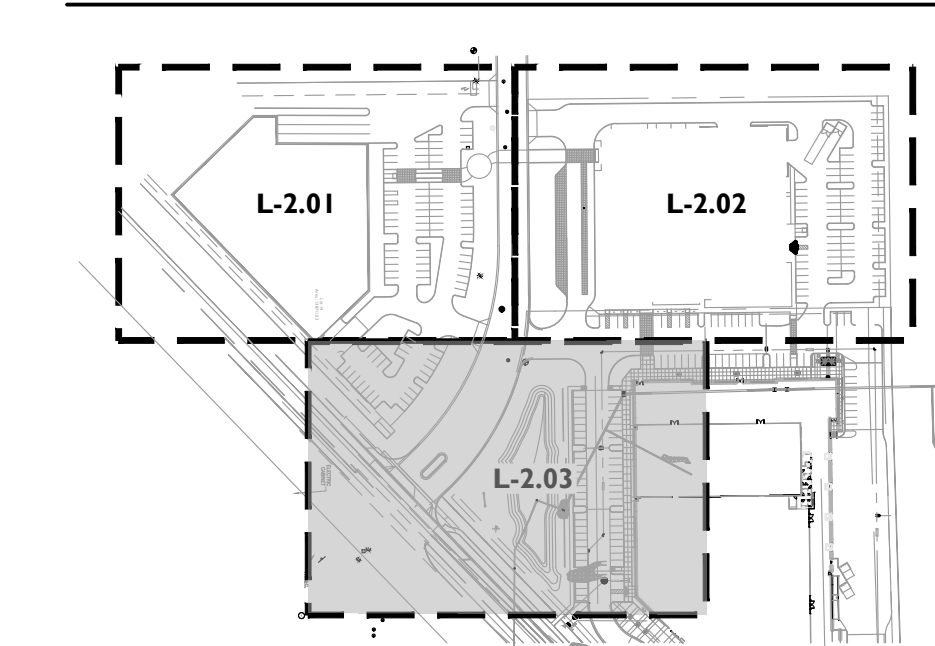
RAY ROAD FRONTAGE (470 L.F.)	REQUIRED	PROVIDED
1 TREE & 6 SHRUBS PER 25 L.F. OF STREET FRONTAGE	19 TREES 113 SHRUBS	19 TREES 113 SHRUBS
SEAVER AVE FRONTAGE (416 L.F.)	REQUIRED	PROVIDED
1 TREE & 6 SHRUBS PER 25 L.F. OF STREET FRONTAGE	17 TREES 100 SHRUBS	17 TREES 100 SHRUBS
PROPERTY PERIMETER 763 L.F.)	REQUIRED	PROVIDED
3 NON DECIDUOUS TREE PER 100 L.F.	23 TREES 152 SHRUBS	23 TREES 152 SHRUBS

FOUNDATION BASE (1,819 L.F.)	REQUIRED	PROVIDED
1 TREE PER 50 L.F. OF EXTERIOR BUILDING WALL	36 TREES	36 TREES
10% OF FOUNDATION BASE TREES TO BE 36" BOX SIZE TREES	4 TREES	26 TREES
TREE SIZE (SITE WIDE)	REQUIRED	PROVIDED
36" BOX (25% MIN.)	38 TREES	44 TREES
24" BOX (50% MIN.)	76 TREES	107 TREES
		TOTAL: 151

### MATERIALS LEGEND

SYMBOL	ITEM	SIZE & COLOR	QTY
	Decomposed Granite with Planting	1/2" Screened - 2" deep Color: Mahogany	63,750 SF
	Angular Rock	3"-8" Color: Mahogany	1,589 SF

### KEY MAP

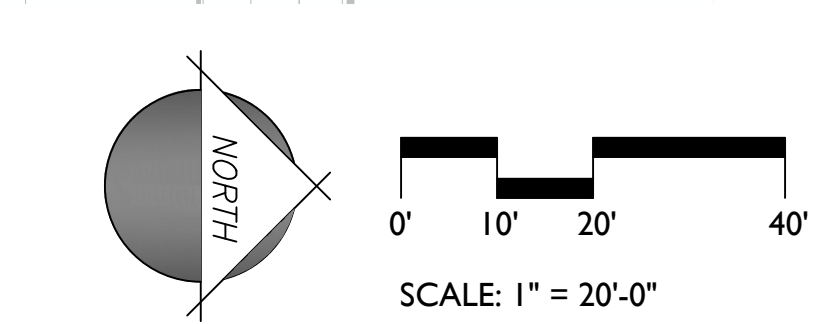
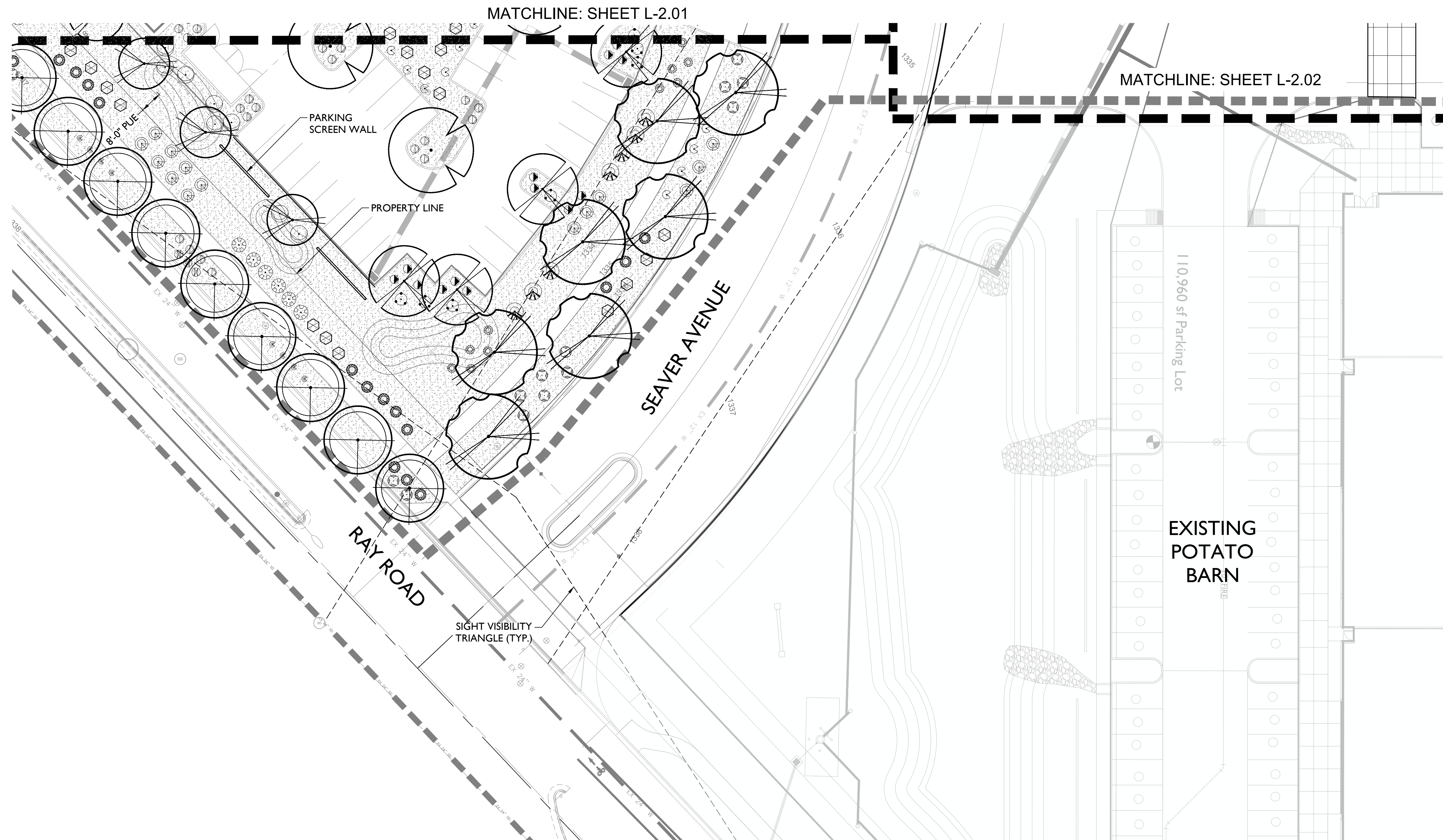


### PLANT LEGEND

SYMBOL	SCIENTIFIC NAME	COMMON NAME	SIZE	QTY
<b>TREES</b>				
	Acacia farnesiana	Sweet Acacia	24" Box	13
	Acacia salicina	Willow Acacia	24" Box	11
	Bauhinia lunarioides	Anacacho Orchid Tree	24" Box	6
	Bauhinia purpurea	Purple Orchid Tree	24" Box	3
	Caesalpinia cacalaco 'Smoothie'	Thornless Cascalote	24" Box	13
	Fraxinus velutina 'Fan Tex'	Fan Tex Ash	24" Box	18
	Olea europaea 'Swan Hill'	'Swan Hill' Olive	24" Box	15
	Pistacia x 'Red Push'	Red Push Pistache	36" Box	22
	Phoenix roebelenii	Pygmy Palm	24" Box	15
	Quercus virginiana	Cathedral Live Oak	36" Box	22
	Ulmus parvifolia	Chinese Evergreen Elm	24" Box	22
	Vitex agnus-castus	Chaste Tree	24" Box	13

SYMBOL	COMMON NAME	SIZE	QTY
<b>SHRUBS/ACCENTS</b>			
	Agave geminiflora	Twin Flowered Agave	5 Gal 14
	Aloe barbadensis	Medicinal Aloe	5 Gal 45
	Bouteloua gracilis	Blonde Ambition	5 Gal 78
	Bougainvillea species	Bougainvillea Vine	5 Gal 17
	Caesalpinia pulcherrima	Red Bird of Paradise	5 Gal 38
	Eremophila macuata 'Valentine'	'Valentine' Emu Bush	5 Gal 74
	Gossypium harknessii	San Marcos Hibiscus	5 Gal 53
	Hesperaloe parviflora 'Brakelights'	Brakelights Red Yucca	5 Gal 28
	Justicia spicigera	Mexican Honeysuckle	5 Gal 46
	Leucophyllum langmaniae 'Rio Bravo'	Rio Bravo Sage	5 Gal 48
	Muhlenbergia capillaris 'Regal Mist'	'Regal Mist' Muhly	5 Gal 51
	Pedilanthus macrocarpus	Lady's Slipper	5 Gal 8
	Plumbago auriculata	Cape Plumbago	5 Gal 28
	Ruellia brittoniana	Mexican Petunia	5 Gal 94
	Tecoma x 'Sparky'	Sparky Tacoma	5 Gal 65

SYMBOL	COMMON NAME	SIZE	QTY
<b>GROUNDCOVERS</b>			
	Lantana montevidensis	Trailing Purple Lantana	1 Gal 72
	Lantana x 'New Gold'	New Gold Lantana	1 Gal 121
	Sphagneticola trilobata	Yellow Dot	1 Gal 45
	Ruellia brittoniana 'Katie'	Katie Ruella	1 Gal 74
	Portulacaria afra minima	Dwarf Elephant Food	5 Gal 11



40702  
THOMAS E. SNYDER  
11.8.20

Phase  
Design Review

**THE NOX**  
Music Performance Venue  
7244 E. Seaver Ave, Mesa, AZ 85212

Project Number: <b>2201</b>	Revision Date: AS1 1 REVDATE2 REVDATE3 REVDATE4	Sheet Number: <b>L-2.03</b>
Date: 11/12/2024		

S:\Projects\2022\22-0943\landscape\Drawings\preliminary plans\22-0943 - L-2.01 - Landscape Plan.dwg 11.12.24 2:23pm ABuckley



# LANDSCAPE IMAGERY CHARACTER - TREES



SWEET ACACIA  
*Acacia farnesiana*



WILLOW ACACIA  
*Acacia salicina*



ANACACHO ORCHID TREE  
*Bauhinia lunarioides*



PURPLE ORCHID TREE  
*Bauhinia purpurea*



THORNLESS CASCALOTE  
*Caesalpinia cacalaco 'Smoothie'*



FAN TEX ASH  
*Fraxinus velutina 'Fan Tex'*



'SWAN HILL' OLIVE  
*Olea europaea 'Swan Hill'*



RED PUSH PISTACHE  
*Pistachia chinensis 'Red Push'*



PYGMY PALM  
*Phoenix roebelenii*



CATHEDRAL LIVE OAK  
*Quercus virginiana*



CHINESE EVERGREEN ELM  
*Ulmus parvifolia*



CHASTE TREE  
*Vitex agnus-castus*

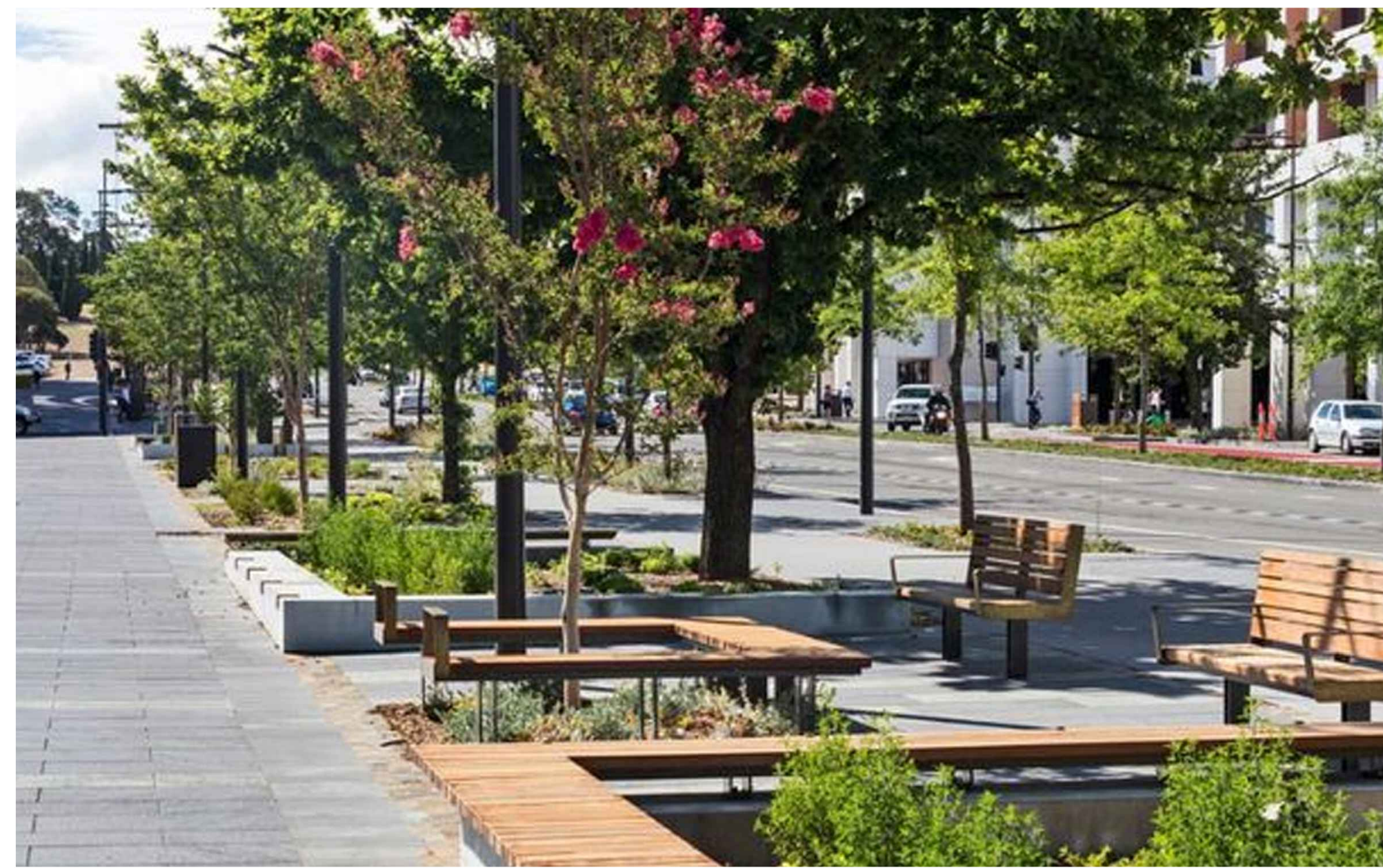
S:\Projects\2022\22-0943\landscapes\Drawings\preliminary\plans\22-0943 - L-3.01 - Landscape Imagery Character.dwg 11/12/24 2:10pm ABuckley

		Phase
		Design Review
<b>THE NOX</b> Music Performance Venue 7244 E. Seaver Ave, Mesa, AZ 85212		
Project Number:	Revision Date:	Sheet Number:
2201	ASI 1 REVDAT2 REVDAT3 REVDAT4	L-3.01
Date:		
11/12/2024		

# COLOR & MATERIAL CHARACTER



MUSIC DRIVEN DESIGN ELEMENTS



TREE LINED PLAZA WITH SEATING



PEDESTRIAN PROMENADE WITH ALLEY OF TREES



DECORATIVE PEDESTRIAN WALKWAYS



ENTRY MONUMENT WITH MODERN MATERIALITY

S:\Projects\2022\22-0943\landscapes\preliminary plans\22-0943 - L-4-01 - Color and Material Character.dwg 11.12.24 2:11pm ABuckley

		Phase
		Design Review
<b>THE NOX</b> Music Performance Venue 7244 E. Seaver Ave, Mesa, AZ 85212		
Project Number:	Revision Date:	Sheet Number:
2201	ASI 1 REVDATE2 REVDATE3 REVDATE4	L-4.01
Date:	11/12/2024	

# COLOR & MATERIAL CHARACTER



LANDSCAPE BENCH  
BRONZE



DECORATIVE PLANTERS WITH ACCENT PLANTING



INTEGRAL COLORED CONCRETE



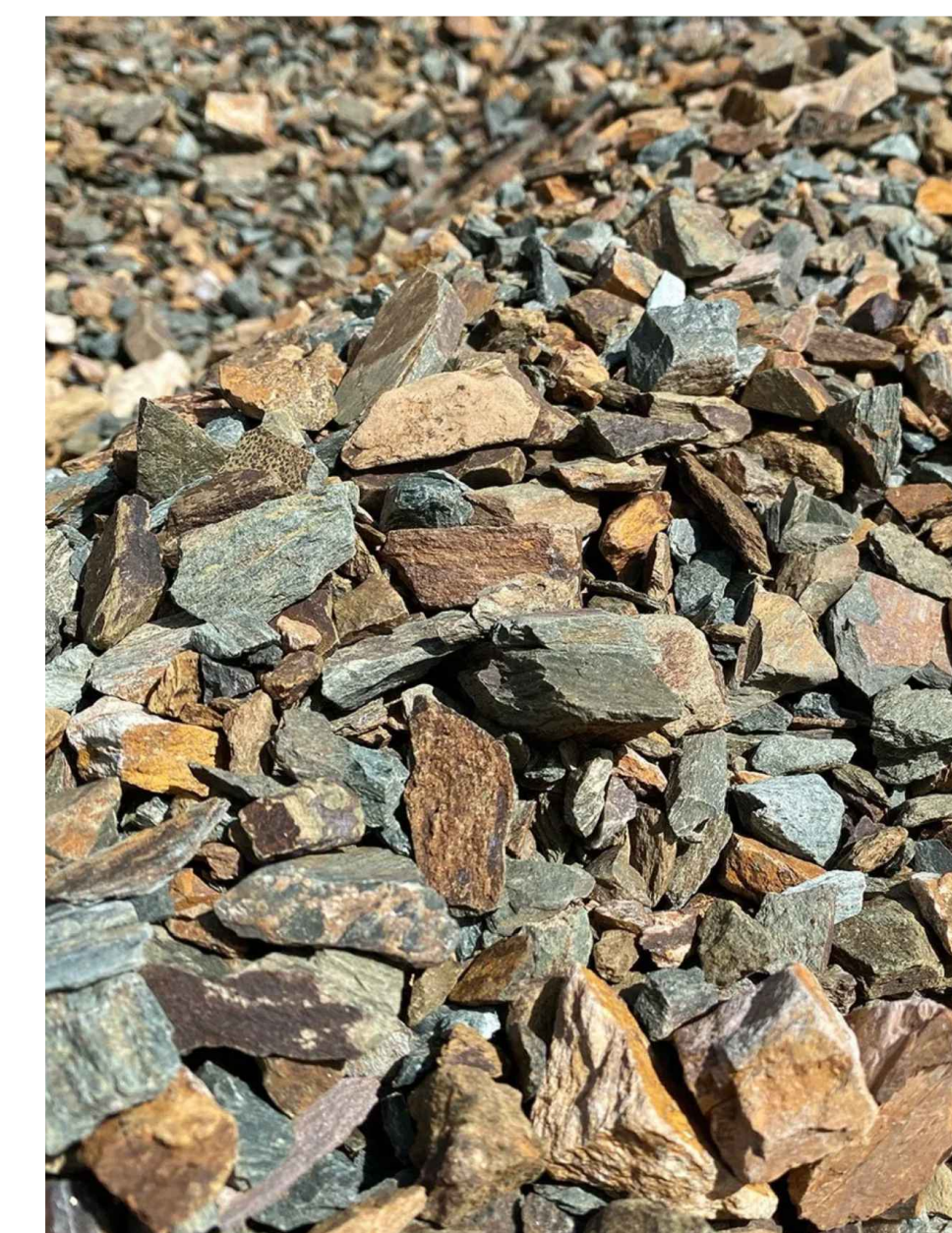
TREE GRATE



STANDARD CONCRETE PAVING  
GRAY



BRICK PAVERS



ANGULAR ROCK  
MAHOGANY

S:\Projects\2022\22-0943\landscapes\preliminary plans\22-0943 - L-4-01 - Color and Material Character.dwg 11.12.24 2:11pm ABuckley

		Phase
		Design Review
<b>THE NOX</b> Music Performance Venue 7244 E. Seaver Ave, Mesa, AZ 85212		
Project Number:	Revision Date:	Sheet Number:
2201	ASI 1	<b>L-4.02</b>
Date:	REVDATE2	
11/12/2024	REVDATE3	
	REVDATE4	