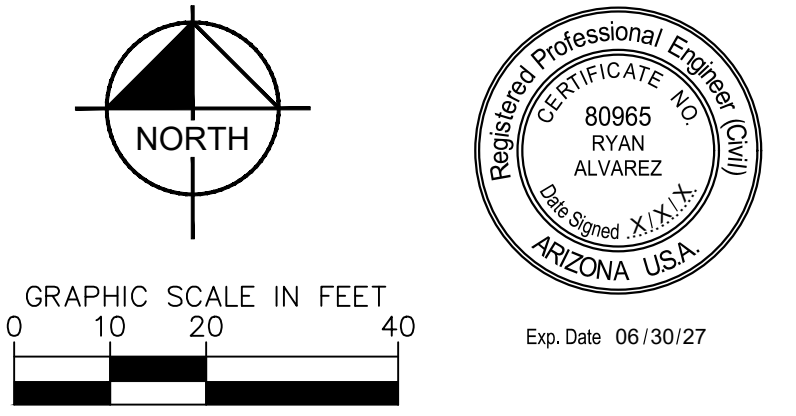
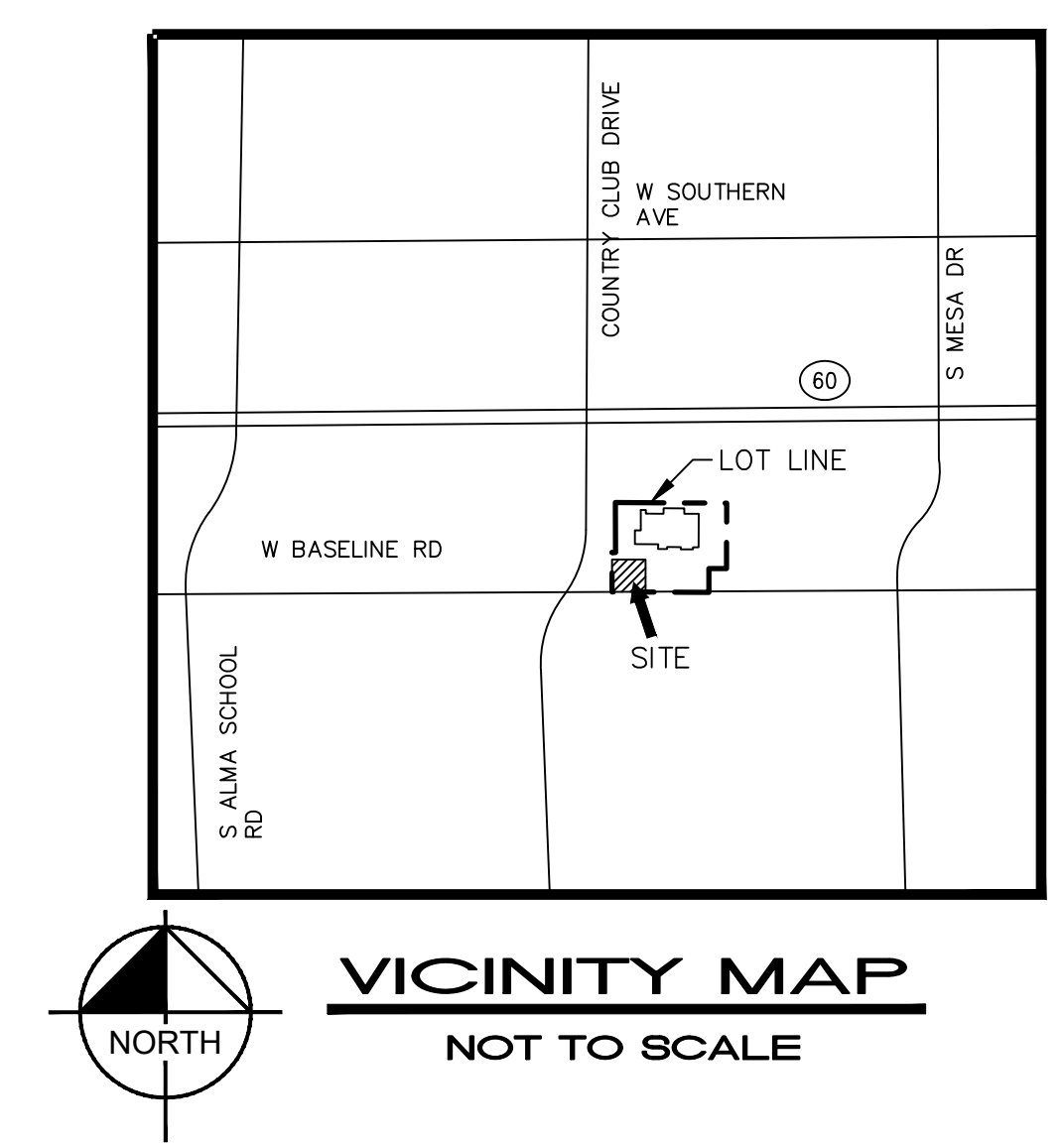
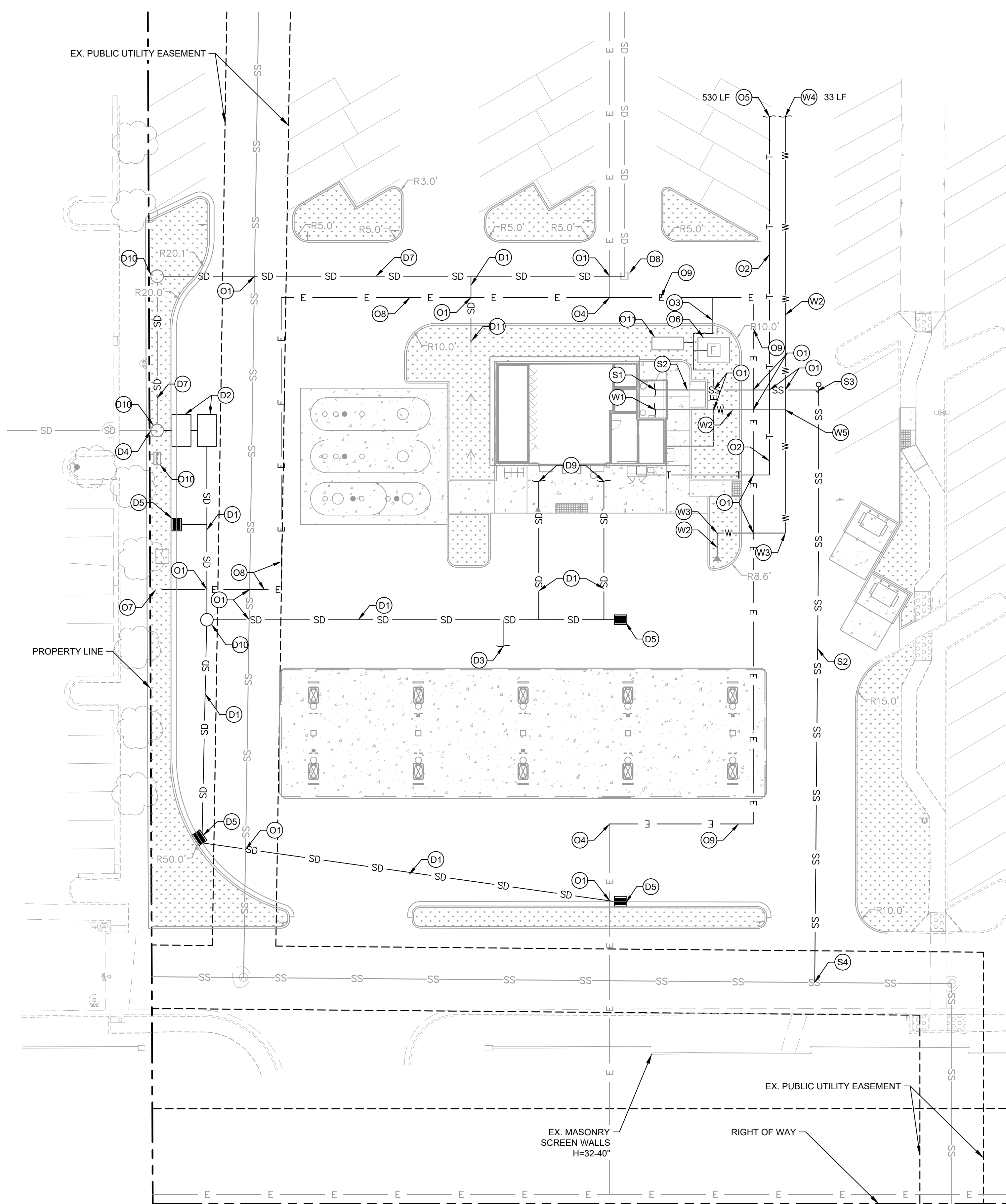


LEGEND

	PROPERTY LINE
	EASEMENT LINE
	PROPOSED CONTOUR
	EXISTING CONTOUR
	RIDGE LINE
	GRADING LIMITS
	PROPOSED STORM DRAIN LINE
	EXISTING STORM DRAIN LINE
	FINISH FLOOR ELEVATION
	FLOWLINE
	LIP OF GUTTER
	TOP OF CURB
	FINISH SURFACE
	EXISTING GRADE
	PROPOSED GRADE
	HEAVY DUTY ASPALT PAVING
	LANDSCAPING
	CONCRETE PAVEMENT
	TRUNCATED DOMES
	PROPOSED SLOPE
	PROPOSED DRAIN INLET
	PROPOSED SWALE

WALMART FUEL STATION - STORE #3799
330 W BASELINE RD, MESA, AZ 85210
FINAL PRELIMINARY GRADING PLAN





LEGEND

---	PROPERTY LINE
- - -	EASEMENT LINE
E E	EXISTING UNDERGROUND ELECTRICAL LINE
SS	EXISTING UNDERGROUND SEWER LINE
T	PROPOSED TELECOMMUNICATION LINE
W	PROPOSED WATER LINE
SS	PROPOSED SEWER LINE
E E	PROPOSED UNDERGROUND ELECTRICAL LINE
SD	PROPOSED STORM DRAIN PIPE
SD	EXISTING STORM DRAIN LINE
->	PROPOSED SWALE
M.A.G.	MARICOPA ASSOCIATION OF GOVERNMENTS
■	PROPOSED DRAIN INLET

- #### SEWER
- (S1) BUILDING POINT OF CONNECTION (5-FT FROM BUILDING FACE). REFER TO MEP PLANS FOR CONTINUATION.
 - (S2) INSTALL 4" SDR-PVC SEWER LATERAL.
 - (S3) INSTALL 4" SDR-PVC 90 DEGREE BEND WITH DEAD END SANITARY SEWER CLEANOUT.
 - (S4) POINT OF CONNECTION FOR SANITARY SEWER LINE.

- #### DOMESTIC WATER
- (W1) 1.5" BUILDING POINT OF CONNECTION (5-FT FROM BUILDING FACE). REFER TO PLUMBING PLANS FOR CONTINUATION.
 - (W2) INSTALL 1.5" SCHEDULE 40 DOMESTIC WATER PIPE.
 - (W3) INSTALL 1.5" SCHEDULE 40 90 DEGREE BEND.
 - (W4) POINT OF CONNECTION FOR WATER LINE.
 - (W5) PROPOSED 1.5" X 1.5" X 1.5" WATERLINE TEE.

- #### OTHER UTILITY NOTES
- (O1) PROPOSED UTILITY CROSSING.
 - (O2) PROPOSED FIBER OPTIC CONDUIT 3" DIRECTIONAL BORE OR APPROVED EQUAL WITH PULL BOXES EVERY 300' TO EXISTING WALMART SUPERCENTER FROM KIOSK.
 - (O3) PROPOSED CONDUIT FOR 400 AMP ELECTRIC SERVICE. REFER TO UTILITY COMPANY PLAN/REQUIREMENTS FOR MORE INFORMATION.
 - (O4) PROPOSED ELECTRIC CONDUIT TIE INTO EXISTING SERVICE.
 - (O5) PROPOSED TELECOMMUNICATION TIE INTO EXISTING SERVICE ALONG NORTH SIDE OF WALMART PROPERTY.
 - (O6) PROPOSED TRANSFORMER.
 - (O7) PROPOSED AIR/WATER PEDESTAL.
 - (O8) 1" ELECTRICAL CONDUIT.
 - (O9) PROPOSED REROUTE OF ELECTRICAL LINE AROUND BUILDING AND CANOPY.
 - (O10) PROPOSED VAPOR RECOVERY UTILITY.
 - (O11) PROPOSED STANDARD ELECTRICAL SYSTEM.

- #### STORM DRAIN
- (D1) PROPOSED STORM DRAIN PIPE.
 - (D2) PROPOSED ENVIBRO 80 FILTRATION SYSTEM.
 - (D3) PROPOSED CANOPY ROOF DRAIN CONNECTION.
 - (D4) POINT OF CONNECTION FOR STORM DRAIN LINE.
 - (D5) PROPOSED TYPE A CATCH BASIN PER M.A.G. STANDARD DETAIL 530.
 - (D7) PROPOSED REROUTE OF EXISTING 36" STORM DRAIN LINE AROUND BUILDING.
 - (D8) EXISTING STORM DRAIN INLET TO BE USED.
 - (D9) PROPOSED CONNECTION FOR ROOF DRAINAGE.
 - (D10) PROPOSED STORM DRAIN MANHOLE.
 - (D11) PROPOSED 6" LANDSCAPE AREA DRAIN.

WALMART FUEL STATION - STORE #3799
330 W BASELINE RD, MESA, AZ 85210
FINAL PRELIMINARY UTILITY PLAN

