

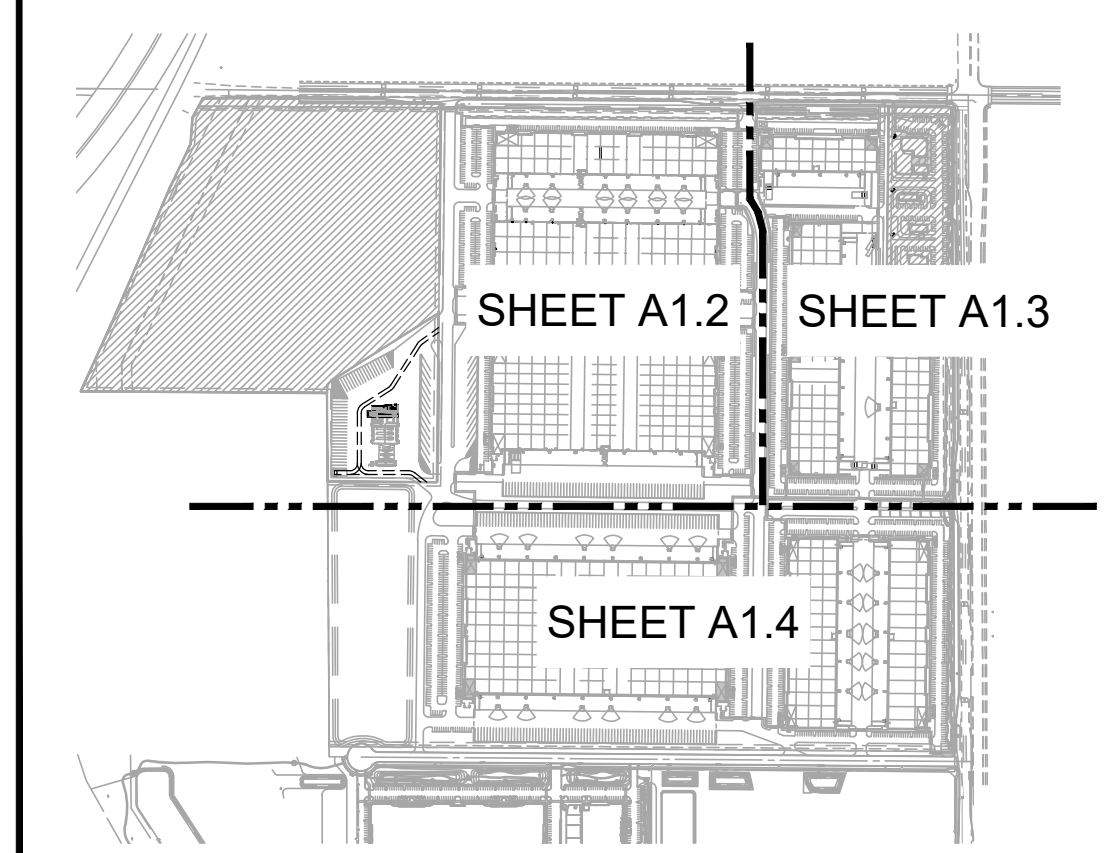
SITE PLAN KEYNOTES

- 1 PROPERTY LINE, (———)
- 2 SET BACK (- - - - -)
- 3 ADA PARKING STALL, SEE 9/A6.0
- 4 9'-0" x 18'-0" TYPICAL PARKING STALL
- 5 6'-0" WIDE SIDEWALK
- 6 NEW PARKING STRIPING TO MATCH CITY STANDARDS
- 7 RETENTION BASIN, SEE CIVIL
- 8 FIRE PUMP/RISER ROOM
- 9 8' HIGH CMU SCREEN WALL, SEE 7/A6.0
- 10 3' HIGH CMU SCREEN WALL, SEE 7/A6.0
- 11 ROLLING ACCESS GATE
- 12 PROPOSED MONUMENT SIGN LOCATION, UNDER SEPARATE PERMIT.
- 13 TRASH ENCLOSURE, SEE 11/A6.0, A6.1 & A6.2
- 14 6' WIDE PEDESTRIAN CROSSWALK WITH ENHANCED STREET PAVERS, SEE DETAIL 11/A6.2.
- 15 10'-0" WIDE SIDEWALK
- 16 MANUAL SWINGING GATE W/ EMERGENCY FIRE ACCESS KNOX BOX & FIRE LANE ACCESS GATE SIGNAGE PER LOCAL CODE REQUIREMENTS
- 17 NEW VEHICLE MAINTENANCE FACILITY UNDER SEPARATE PERMIT.
- 18 TRASH ENCLOSURE, SEE SHEET A6.1 & 4/A6.2
- 19 SOLID WASTE COLLECTION VEHICLE PATH, PER CITY OF MESA STANDARD DETAIL M-62.01.
- 20 DIESEL STORAGE TANKS
- 21 ELECTRICAL TRANSFORMER AND EQUIPMENT.

SITE LEGEND

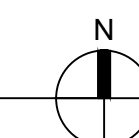
- ▲ DOCK HIGH TRUCK DOOR
- GRADE LEVEL TRUCK DOOR
- |||| BICYCLE RACK

KEY PLAN



PARTIAL SITE PLAN

SCALE: 1"=90'-0"



WARE MALCOMB
Leading Design for Commercial Real Estate

architecture
planning
interiors
graphics
civil engineering
10 eledman
frederick malcomb 92618
p 949.868.1528
f 949.868.1581

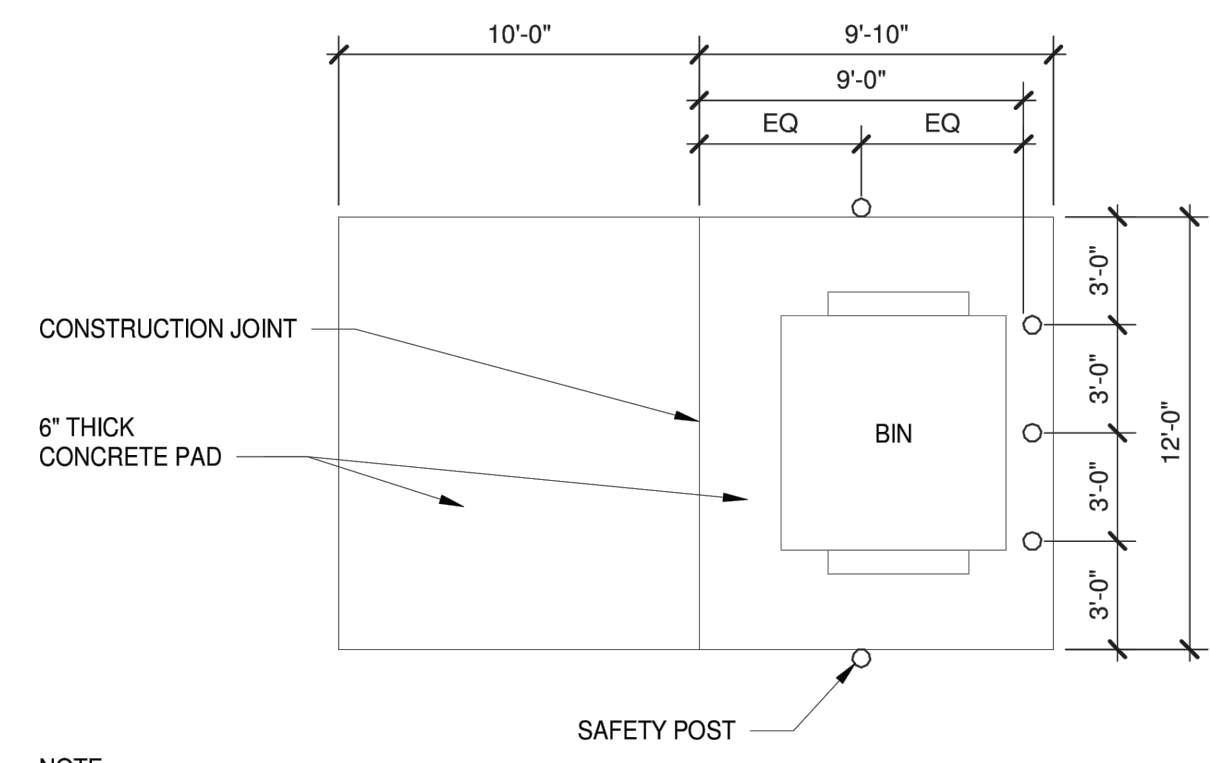


SCANNEL WARNER GATEWAY
202 INDUSTRIAL PARK
8833 E. WARNER ROAD
MESA, ARIZONA 85003

DATE	REMARKS
2021-09-07	MESA DESIGN REVIEW BD. SUBMISS.
2021-10-11	MESA DRB RESUBMITTAL
2022-04-13	MESA DRB UPDATE/SRP
2023-02-06	SITE REVISION / DRB AMENDMENT
2	2023-03-13 CITY COMMENTS
3	2023-04-17 CITY COMMENTS

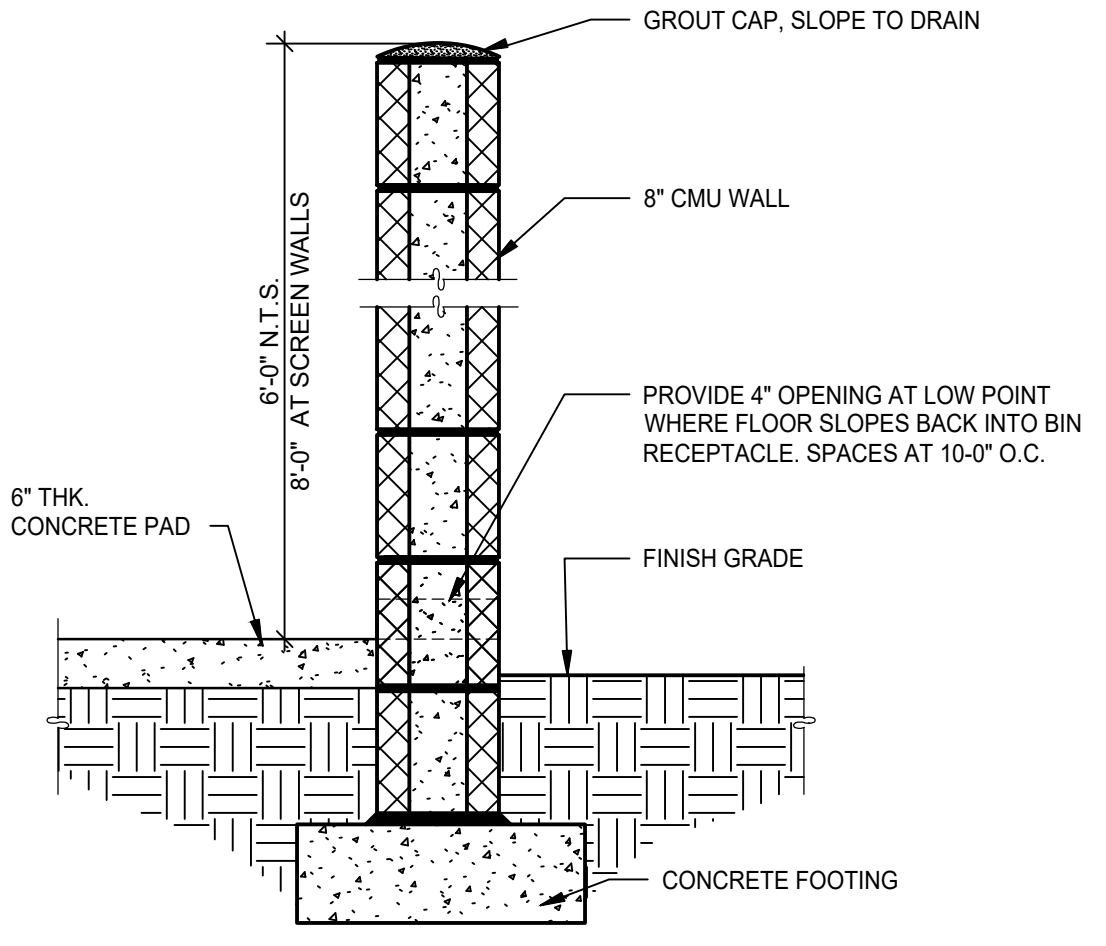
PA / PM: R. SOUTH
DRAWN BY: JD
JOB NO.: PHX21-0031

SHEET
A1.2

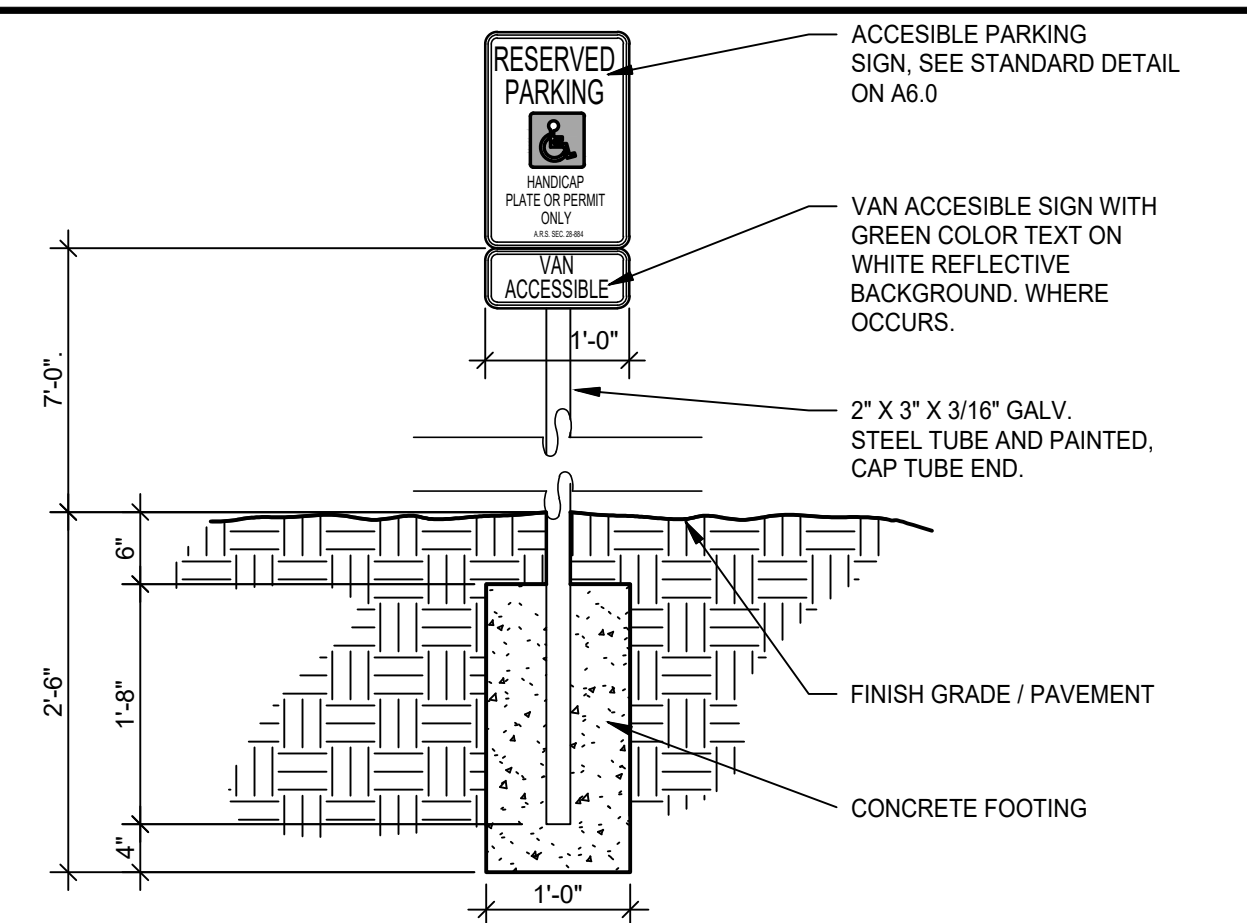


NOTE:
ENCLOSURE BUILT TO CITY STANDARDS. REFER TO CITY OF MESA STANDARD DETAIL M-62.02.1 FOR MORE INFORMATION

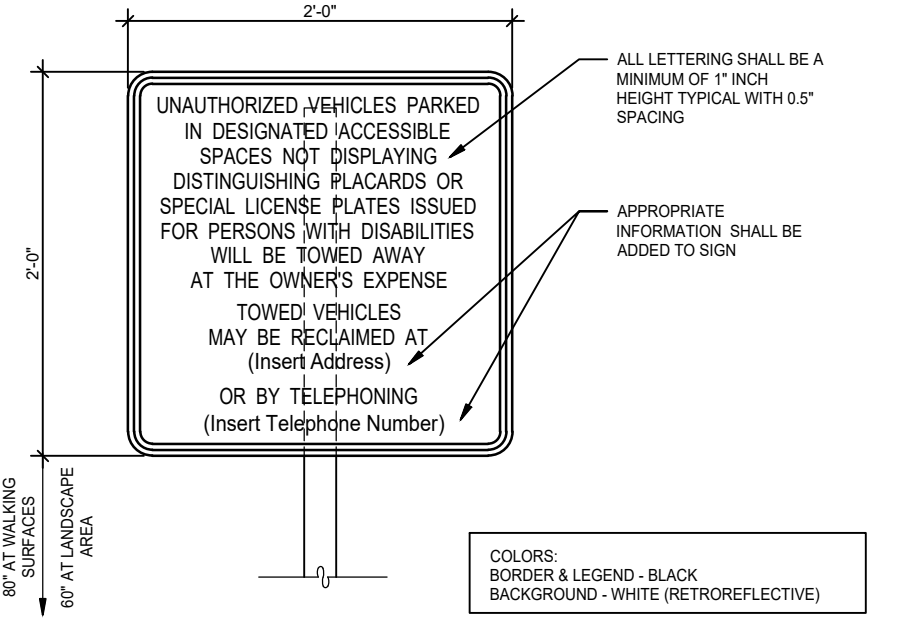
SINGLE BOLLARD TRASH ENCLOSURE 11
SCALE: 1" = 1'-0"



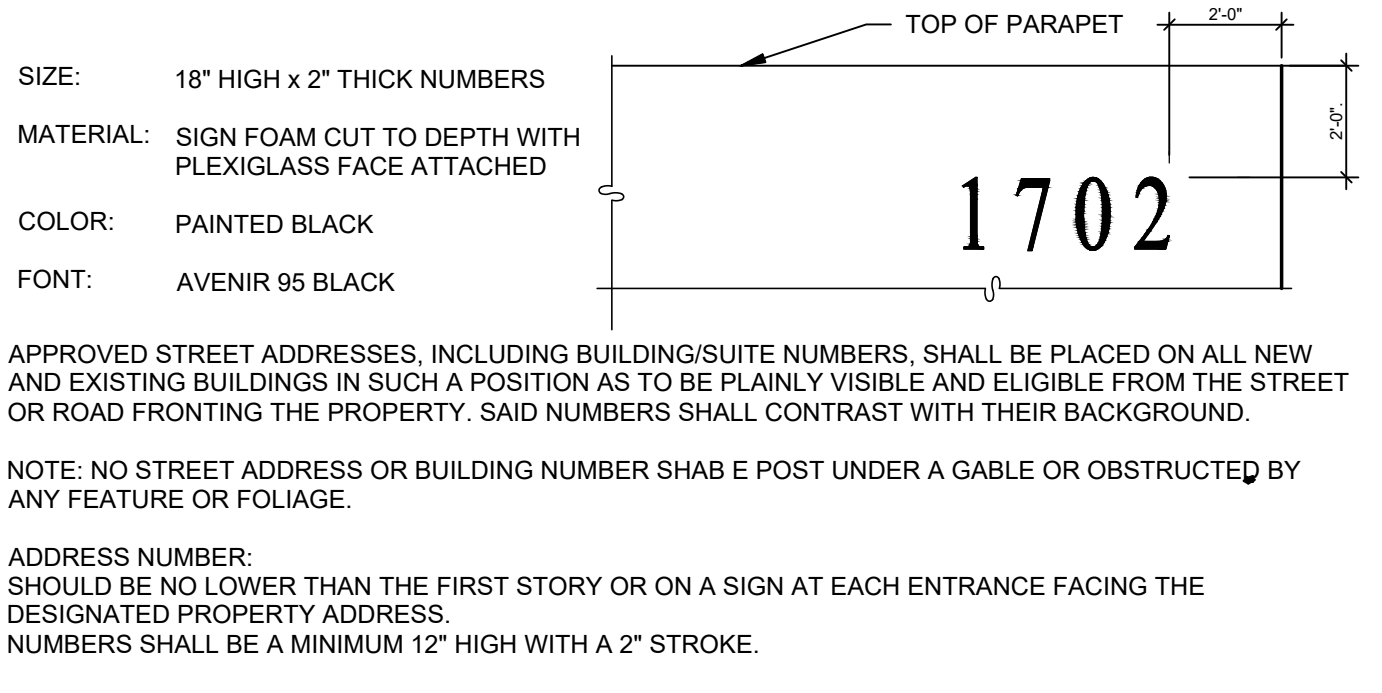
MASONRY TRASH WALL 8
SCALE: 1" = 1'-0"



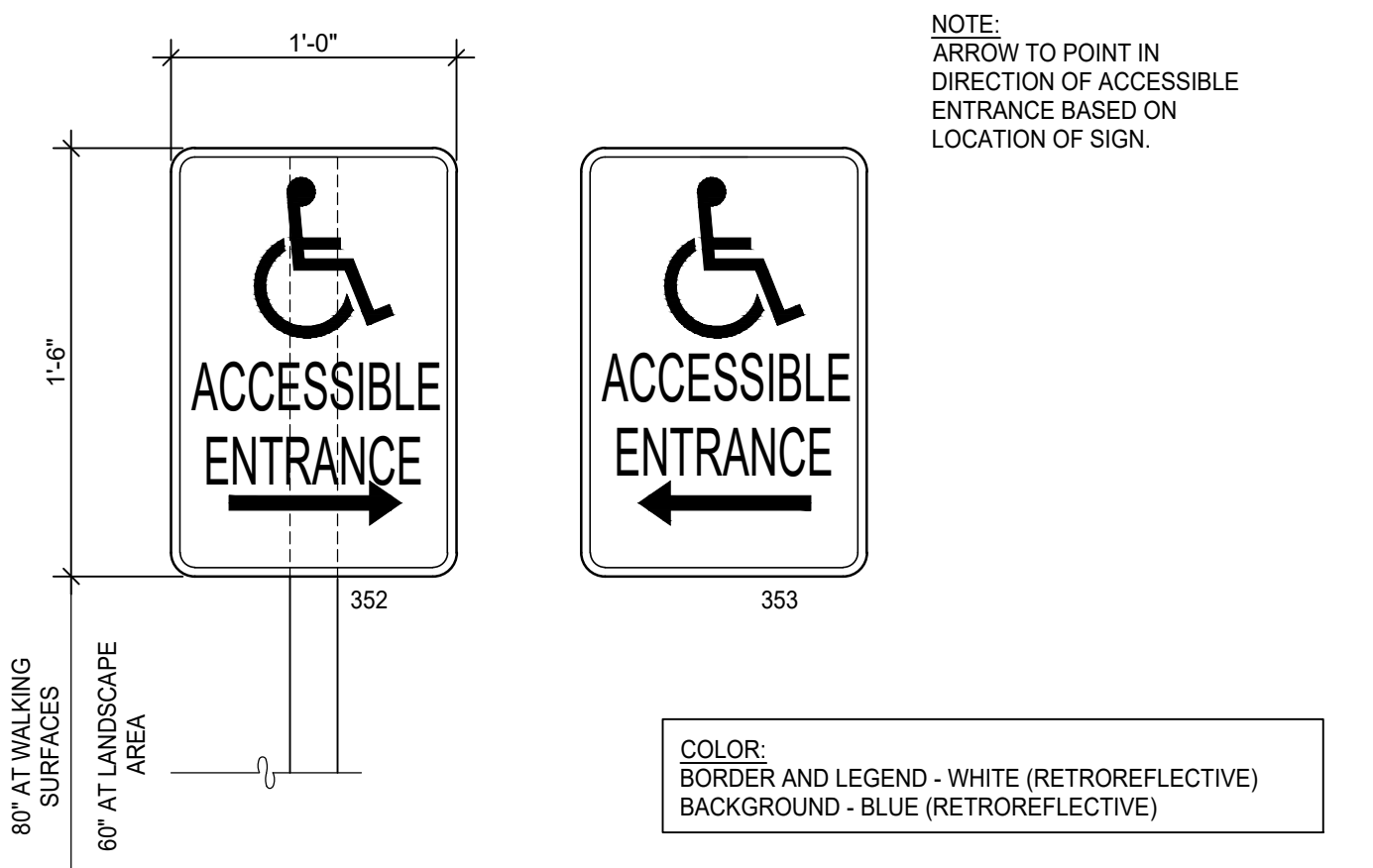
VAN ACCESSIBLE SIGNAGE 5
SCALE: 3/4" = 1'-0"



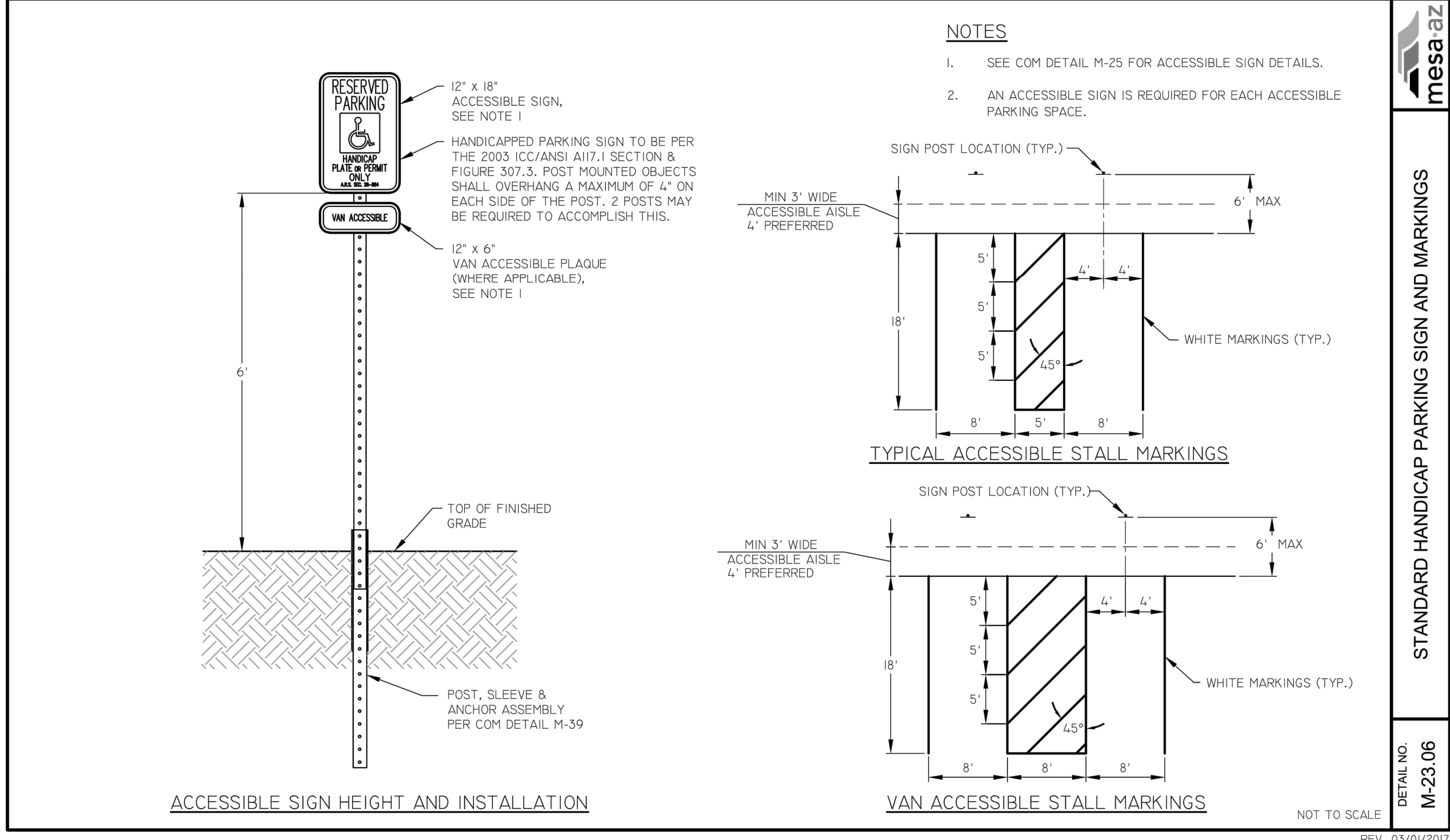
UNAUTHORIZED VEHICLE SIGNAGE 1
SCALE: 1" = 1'-0"



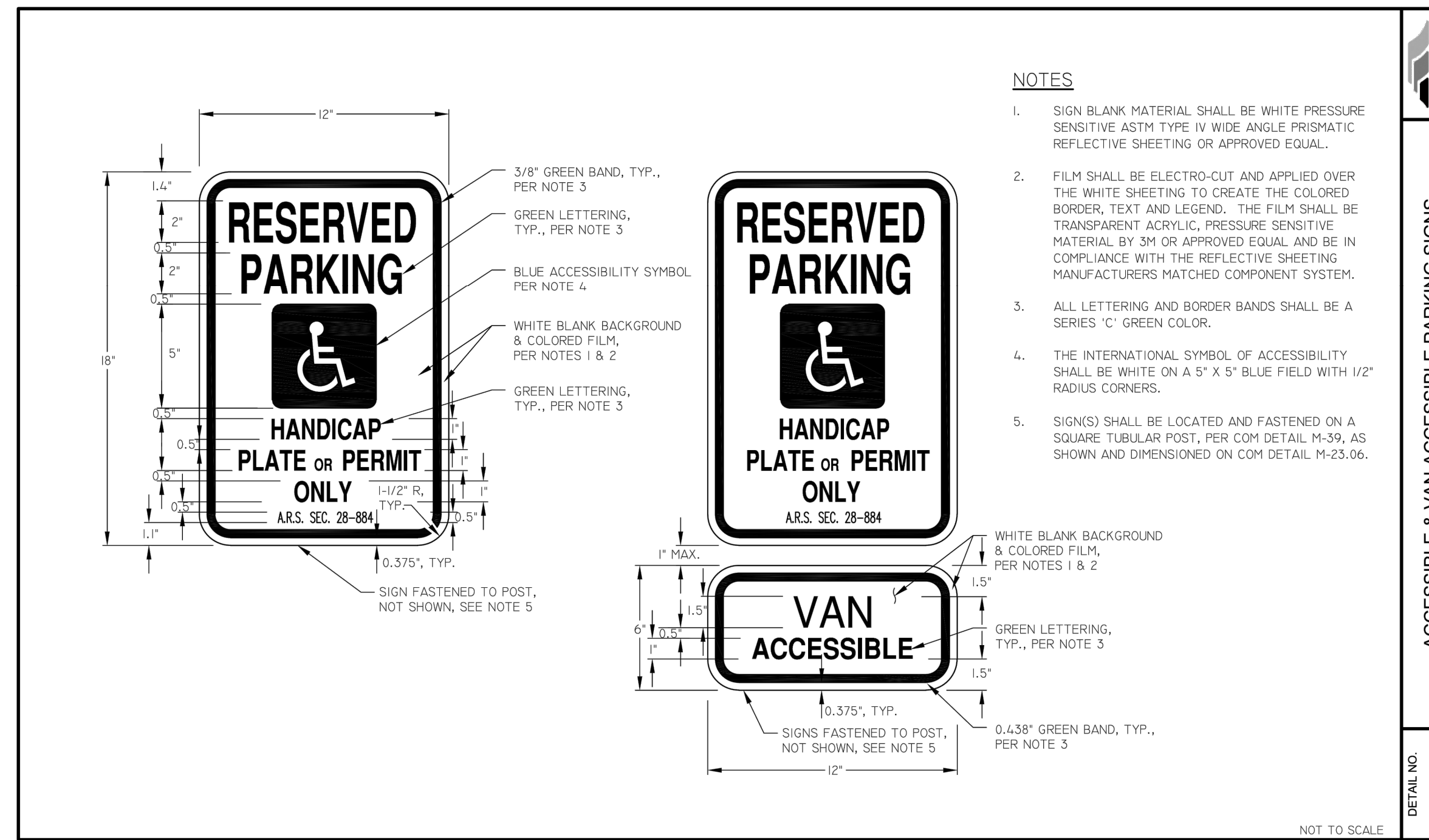
BUILDING ADDRESS NUMBERS 6
SCALE: 1/8" = 1'-0"



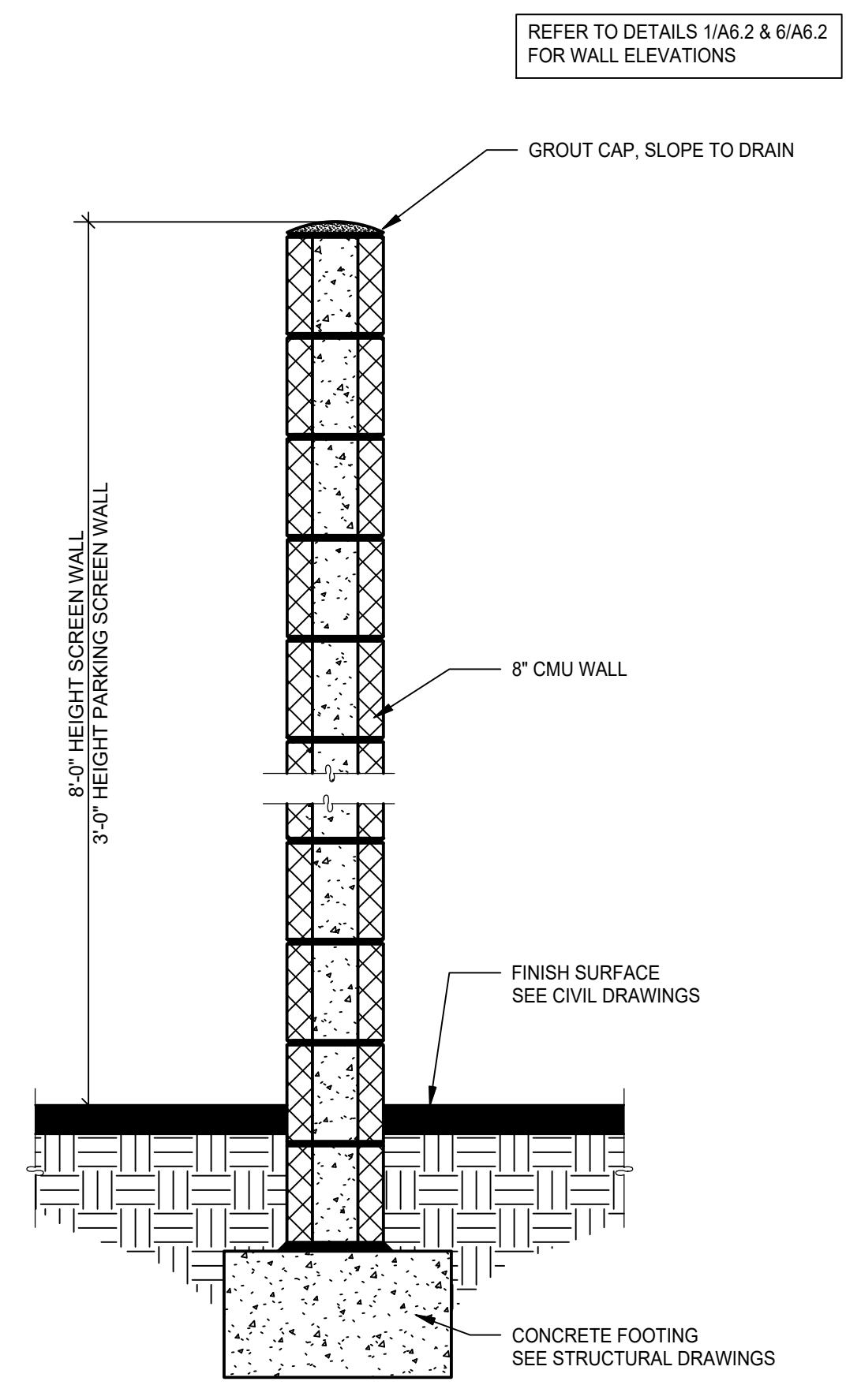
ACCESSIBLE DIRECTION SIGN 2
SCALE: 1 1/2" = 1'-0"



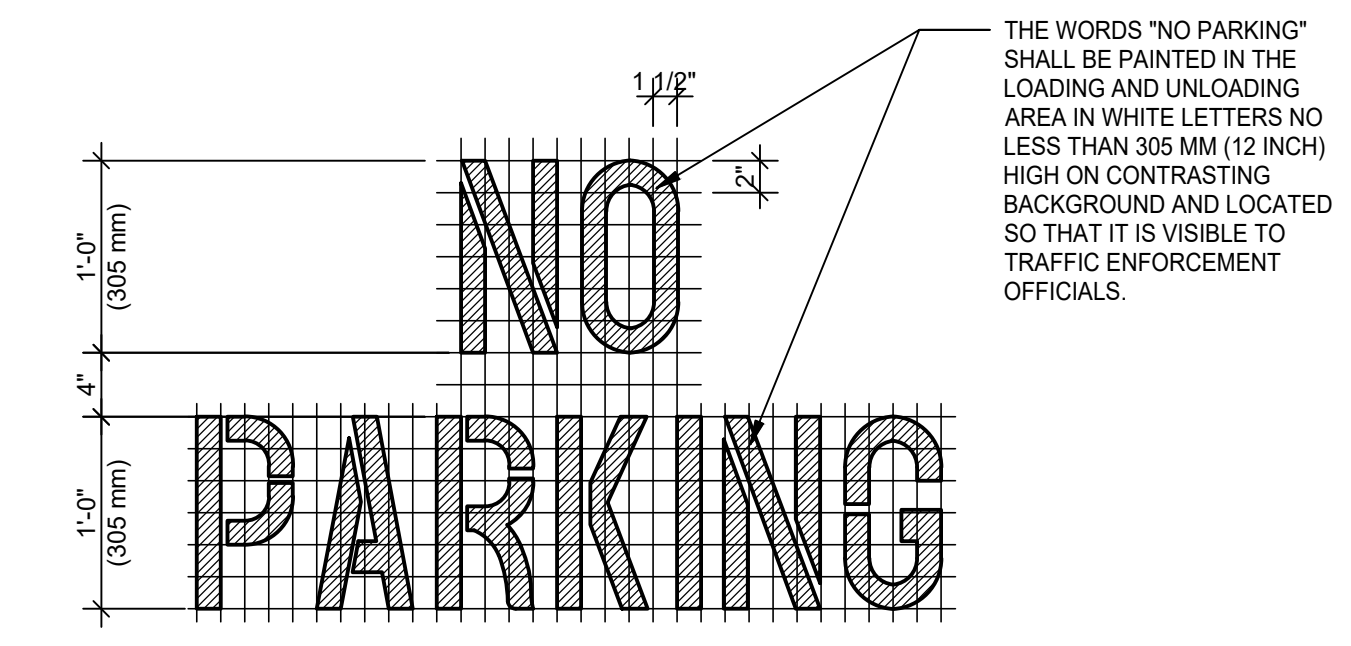
C.O.M. ACCESSIBLE PARKING 9
SCALE: NTS



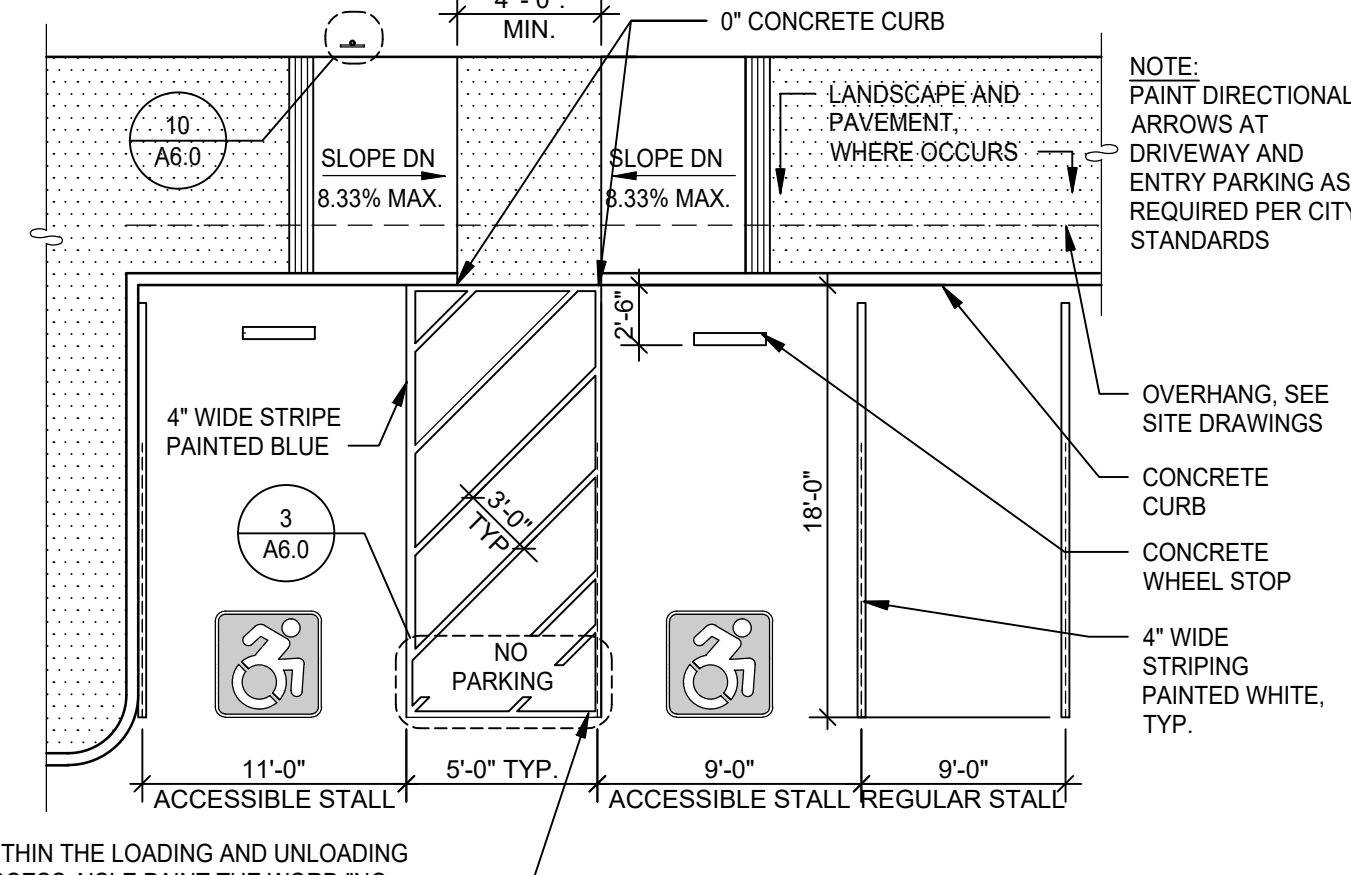
C.O.M. ACCESSIBLE PARKING SIGN 10
SCALE: NTS



MASONRY SCREEN WALL 7
SCALE: 1" = 1'-0"



"NO PARKING" PAVEMENT MARKING 3
SCALE: 1" = 1'-0"



TYPICAL PARKING STALLS 4
SCALE: 1/8" = 1'-0"

WARE MALCOMB
Leading Design for Commercial Real Estate

architecture
planning
interiors
graphics
civil engineering
10 eledrum
frederic malcolm
paul malcolm
p949.863.1581

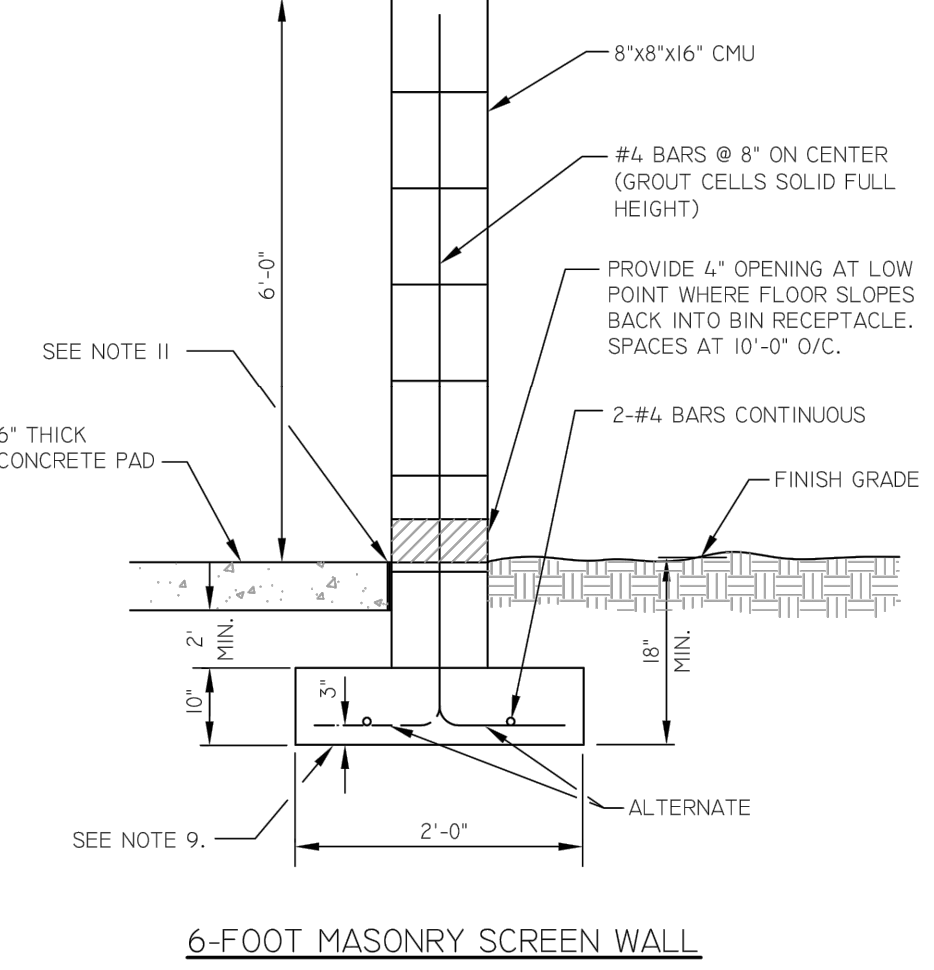


SCANNEL WARNER GATEWAY
202 INDUSTRIAL PARK
8833 E. WARNER ROAD
MESA, ARIZONA 85003

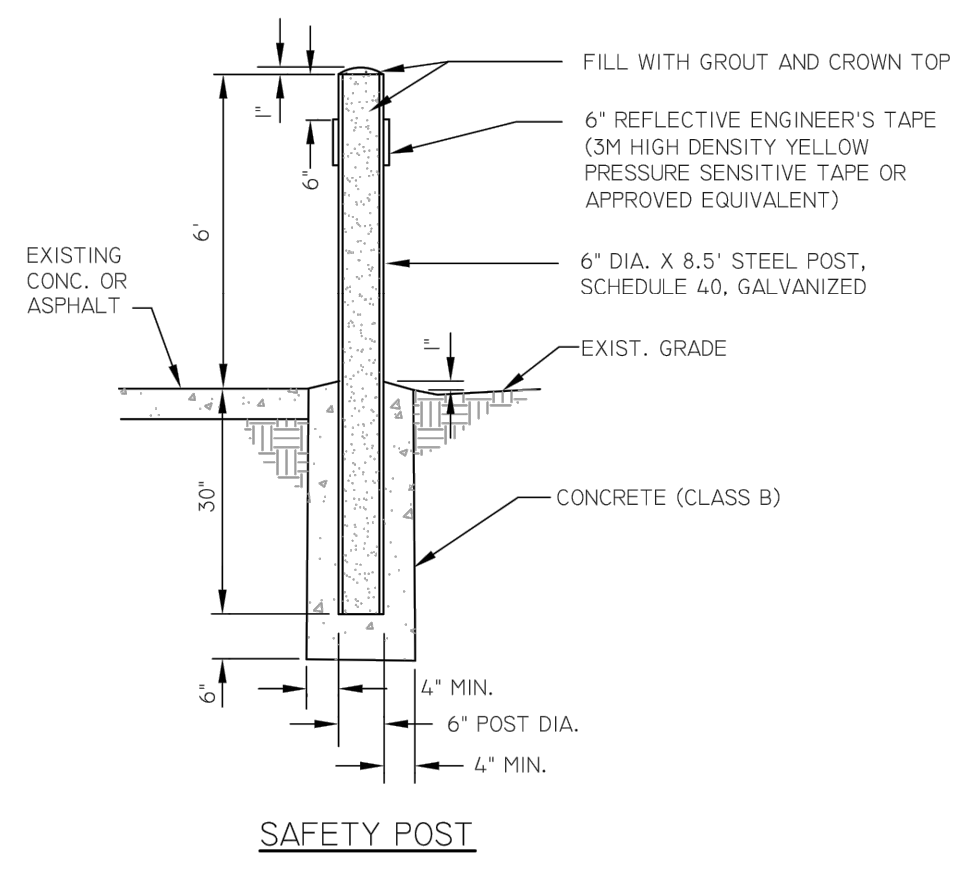
DATE	REVISIONS	REMARKS
2021-09-07	MESA DESIGN REVIEW	BD. SUBMISS.
2021-10-11	MESA DRB RESUBMITTAL	
2022-04-13	MESA DRB UPDATE/DRP	
2023-02-06	SITE REVISION / DRB AMENDMENT	1
2023-03-13	CITY COMMENTS	2

PA / PM: R. SOUTH
DRAWN BY: JD
JOB NO.: PHX21-0031

SHEET
A6.0
FILED 10 MAR 2023



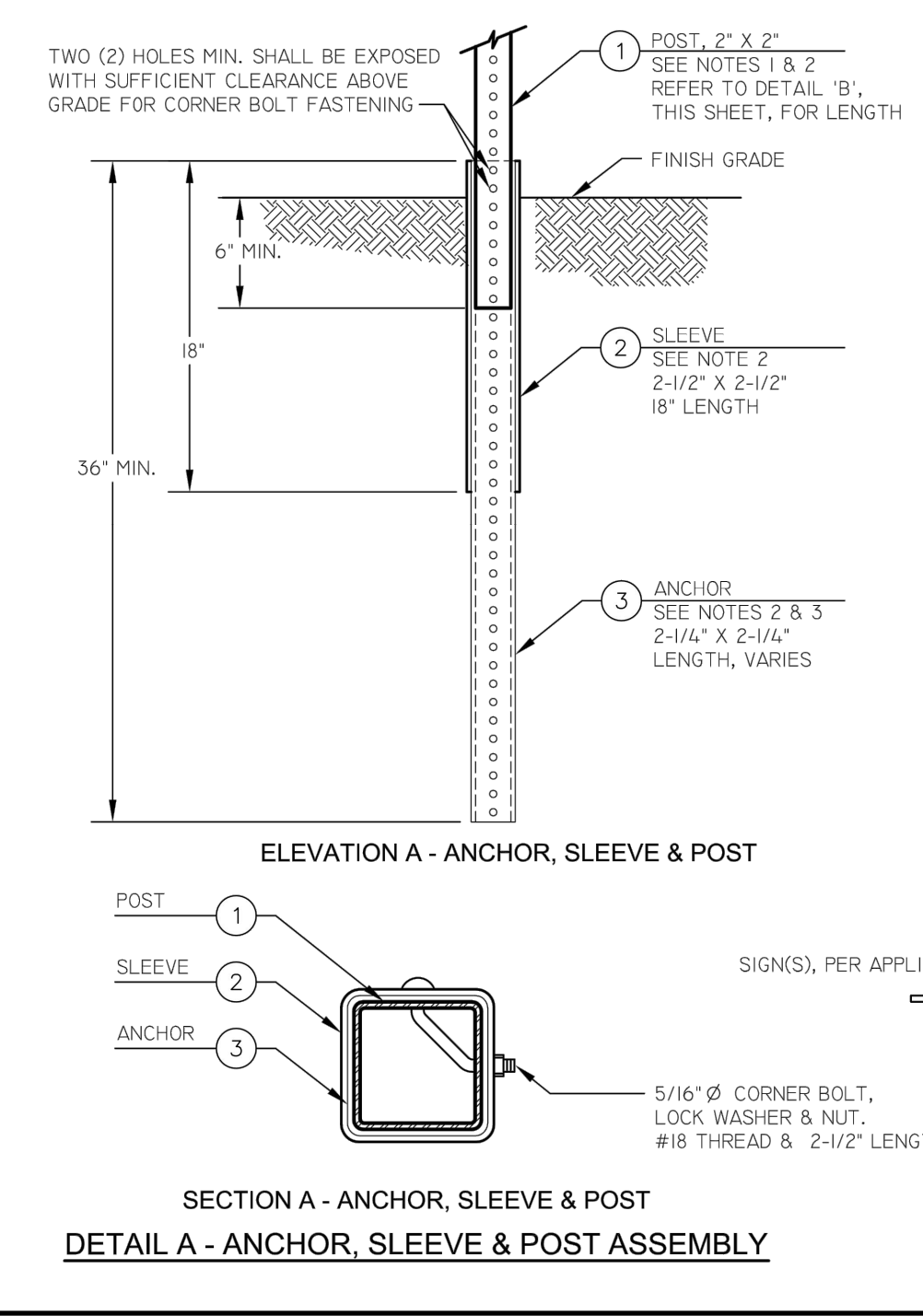
6-FOOT MASONRY SCREEN WALL



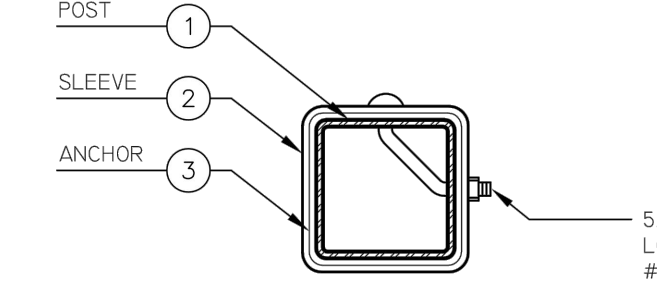
SAFETY POST

SEE M-62.04.2 FOR REFERENCED NOTES

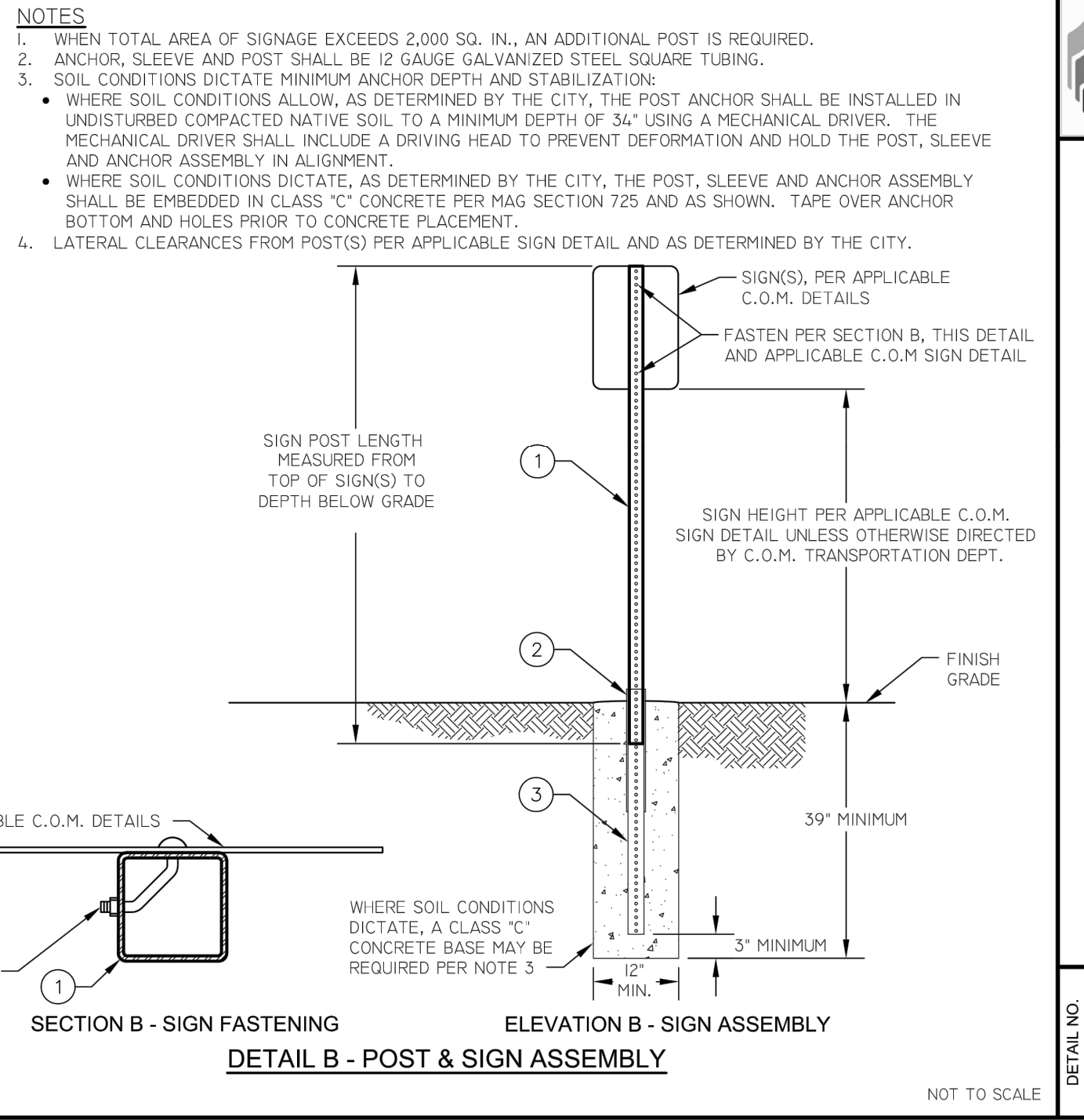
mesa **BIN ENCLOSURE SCREEN WALL, SAFETY POST AND GATE STANDARDS**
 DETAIL NO. M-62.04.1
 REV. 01/31/14
 NOT TO SCALE



ELEVATION A - ANCHOR, SLEEVE & POST



SECTION A - ANCHOR, SLEEVE & POST



ELEVATION B - SIGN ASSEMBLY

DETAIL B - POST & SIGN ASSEMBLY

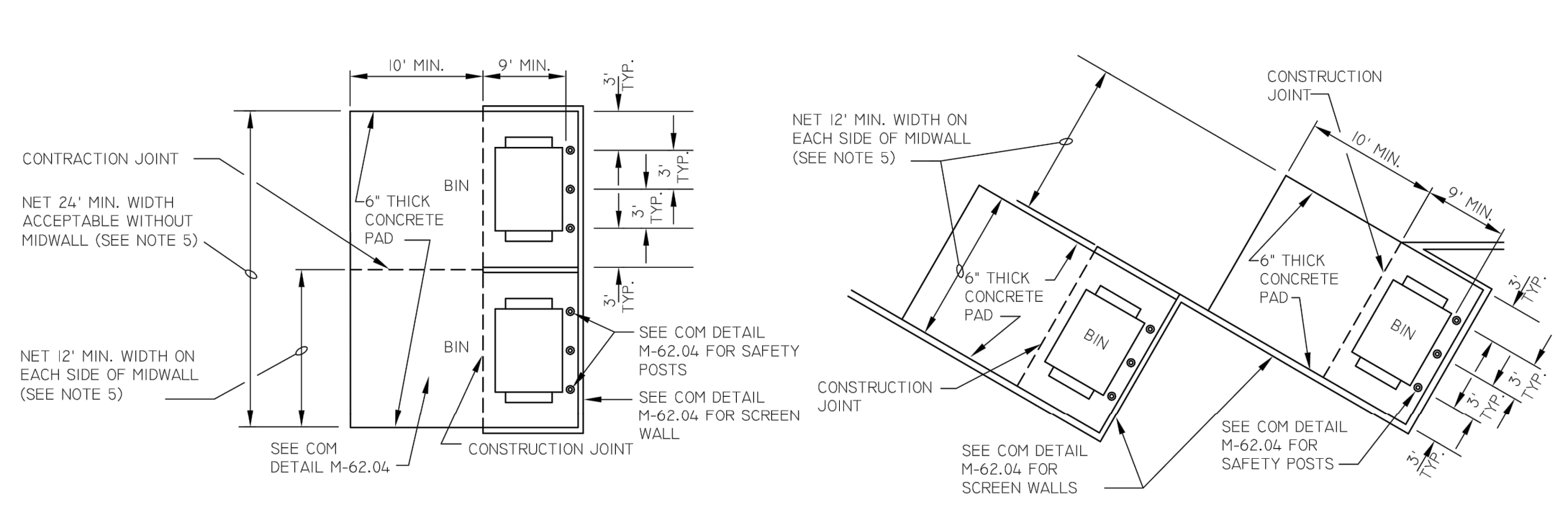
mesa **SIGN POST INSTALLATION (SQUARE TUBING)**
 DETAIL NO. M-39
 REV. 02/04/15
 NOT TO SCALE

NOTES

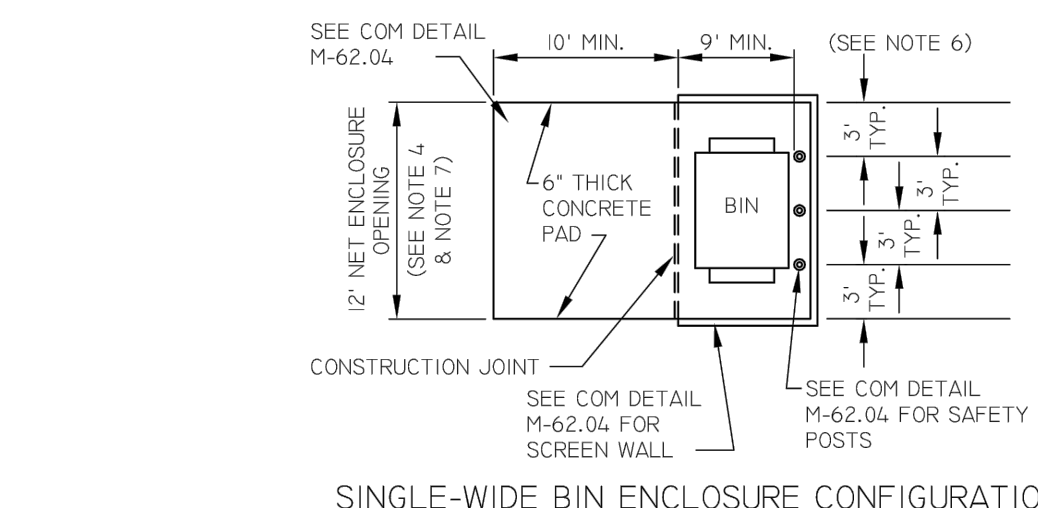
- TRASH AND RECYCLING BIN AREA SHALL BE SCREENED WITH A SIX FOOT (6') MASONRY WALL PER COM DETAIL M-62.04.1.
- BIN ENCLOSURE TO BE A MINIMUM OF 3 FEET FROM ANY NON-COMBUSTIBLE PLANNED OR EXISTING STRUCTURE AT ITS CLOSEST POINT, AND 5 FEET FROM ANY COMBUSTIBLE PLANNED OR EXISTING STRUCTURE AT ITS CLOSEST POINT (PER UNIFORM FIRE CODE 1103.2.2).
- BINS THAT ARE VISIBLE FROM A PUBLIC ROADWAY SHALL HAVE ENCLOSURE GATES THAT SCREEN THE BINS FROM PUBLIC VIEW.
- GATES SHALL BE INSTALLED SO THERE IS A NET BIN ENCLOSURE OPENING OF 12 FEET PER BIN. GATES, HINGES, AND MOUNTING HARDWARE SHALL NOT INTRUDE UPON MINIMUM NET ENCLOSURE OPENING.
- GATES, HINGES, SAFETY POSTS, AND MOUNTING HARDWARE SHALL BE INSTALLED SO THERE IS A MINIMUM 9 FOOT DEPTH CREATED WITHIN EACH ENCLOSURE.
- EACH ENCLOSURE GATE SHALL HAVE DROP PINS INSTALLED AND HOLES DRILLED IN THE CONCRETE AT BOTH THE OPEN AND CLOSED POSITIONS TO PREVENT GATES FROM CLOSING INTO THE COLLECTION VEHICLE.
- BIN ENCLOSURES SHALL HAVE (3) 6" DIAMETER STEEL SAFETY POSTS INSTALLED IN THE BACK OF THE ENCLOSURE ONLY PER COM DETAIL M-62.04.1.
- SAFETY POSTS SHALL HAVE A HEIGHT OF 6 FEET OR BE EQUAL TO THE HEIGHT OF THE BACK SCREEN WALL OF THE ENCLOSURE. SAFETY POSTS SHALL BE PLACED A MINIMUM OF 4' FROM THE WALL.
- USE CLASS "A" CONCRETE AS PER SECTION 725 EXCEPT AS NOTED IN SAFETY POST DETAIL ON COM DETAIL M-62.04.1.
- STEEL REINFORCEMENT SHALL BE GRADE 40.
- EXPANSION JOINT FILLER SHALL BE 1/2" BITUMINOUS TYPE PREFORMED EXPANSION JOINT FILLER ASTM D-1751.
- EXTERIOR FINISH OF 6 FOOT MASONRY SCREEN WALLS SHALL BE COORDINATED ARCHITECTURALLY WITH PRIMARY BUILDING FINISHES.
- SOIL BELOW THE WALL FOOTER AND CONCRETE PAD SHALL BE COMPACTED TO A DEPTH OF 6 INCHES AND TO A MINIMUM DRY DENSITY OF 90% IN ACCORDANCE WITH ASTM D-2922 AND D-3017, AFTER ADJUSTMENT FOR ROCK CORRECTION.
- STANDARDS FOR SOLID WASTE VEHICLE ACCESS ARE ADDRESSED IN COM DETAIL M-62.01.
- STANDARDS FOR SINGLE, DOUBLE, AND TRIPLE-WIDE BIN ENCLOSURES ARE ADDRESSED IN COM DETAILS M-62.02 AND M-62.03.

SEE M-62.04.1 FOR REFERENCED NOTES

mesa **BIN ENCLOSURE SCREEN WALL, SAFETY POST AND GATE STANDARDS - NOTES**
 DETAIL NO. M-62.04.2
 REV. 01/31/14
 NOT TO SCALE



DOUBLE-WIDE BIN ENCLOSURE CONFIGURATIONS



SINGLE-WIDE BIN ENCLOSURE CONFIGURATION

SEE M-62.02.2 FOR REFERENCED NOTES

mesa **SINGLE AND DOUBLE-WIDE BIN ENCLOSURES**
 DETAIL NO. M-62.02.1
 REV. 09/26/16
 NOT TO SCALE

NOTES

- ALL COMMERCIAL PROPERTIES SHALL BE DESIGNED WITH ENCLOSURES TO ACCOMMODATE (1) REFUSE AND (2) RECYCLING ENCLOSURE FOR EVERY 20,000 SQUARE FEET OF BUILDING SPACE. RESTAURANTS WHICH ARE DESIGNED ON A SINGLE PAD SHALL HAVE A MINIMUM (1) REFUSE AND (2) RECYCLING ENCLOSURE. THE ENCLOSURES CAN BE SET UP AS DOUBLES OR SINGLES TO MAXIMIZE THE USE OF THE PROPERTY.
- MULTI-UNIT RESIDENTIAL DEVELOPMENTS SHALL BE DESIGNED WITH EITHER SINGLE OR DOUBLE-WIDE ENCLOSURES FOR TRASH AND AT LEAST ONE TRIPLE-WIDE ENCLOSURE FOR RECYCLING.
- COMPACTORS CAN BE USED IN DEVELOPMENTS WHERE THE EMPLOYEES LOAD AND ACTIVATE THE COMPACTING EQUIPMENT. DEVELOPMENTS THAT ALLOW CUSTOMERS OR RESIDENTS ACCESS TO THE COMPACTING EQUIPMENT WILL NOT BE APPROVED. MARICOPA COUNTY REGULATIONS (MARICOPA COUNTY ENVIRONMENTAL HEALTH CODE CHAPTER 2, SECTION 5, REGULATION 4 (A)) REQUIRE TWICE PER WEEK COLLECTION IF FOOD WASTE IS PLACED INTO CONTAINERS.
- THE NUMBER OF BIN ENCLOSURES NEEDED DEPENDS ON THE SIZE OF THE DEVELOPMENT. TYPICALLY, TOTAL VOLUME NEEDS CAN BE CALCULATED BASED ON ONE HALF-CUBIC YARD PER LIVING UNIT PER WEEK. FOR EXAMPLE, A DEVELOPMENT WITH 240 UNITS X .5 YARDS = 120 YARDS PER WEEK OR 10 TRASH BINS (6 YARD) SERVICED TWO TIMES PER WEEK (10 X 6 X 2 = 120 YARDS).
- SINGLE-WIDE BIN ENCLOSURES SHALL HAVE A NET ENCLOSURE OPENING OF 12 FEET.
- DOUBLE-WIDE BIN ENCLOSURES SHALL HAVE A NET ENCLOSURE OPENING OF 24 FEET WITHOUT MIDWALLS. ALTHOUGH NOT PREFERRED, DOUBLE WIDE BIN ENCLOSURES CAN BE DESIGNED WITH MIDWALLS WITH A NET ENCLOSURE OPENING OF 12 FEET ON EACH SIDE OF MIDWALL.
- GATES, HINGES, SAFETY POSTS, & MOUNTING HARDWARE SHALL BE INSTALLED SO THERE IS A MIN. 9 FOOT DEPTH CREATED WITHIN EACH ENCLOSURE.
- GATES, HINGES AND MOUNTING HARDWARE SHALL NOT INTRUDE UPON MINIMUM NET ENCLOSURE OPENING SO THERE IS A MINIMUM 12' WIDTH WITHIN EACH ENCLOSURE. DOUBLE ENCLOSURE GATES MUST BE ABLE TO OPEN SIMULTANEOUSLY.
- BIN ENCLOSURES ARE TO BE ANGLED NO MORE THAN 30 DEGREES FROM THE CENTER LINE OF THE SOLID WASTE COLLECTION VEHICLE ROUTE.
- BINS THAT ARE VISIBLE FROM A PUBLIC ROADWAY SHALL HAVE ENCLOSURE GATES THAT SCREEN THE BINS FROM PUBLIC VIEW.
- BIN ENCLOSURES TO BE A MINIMUM OF 3 FEET FROM ANY NON-COMBUSTIBLE PLANNED OR EXISTING STRUCTURE AT ITS CLOSEST POINT; 5 FEET FROM ANY COMBUSTIBLE PLANNED OR EXISTING STRUCTURE AT ITS CLOSEST POINT (PER UNIFORM FIRE CODE 1103.2.2).
- STANDARDS FOR SOLID WASTE VEHICLE ACCESS ARE ADDRESSED IN COM DETAIL M-62.03.
- STANDARDS FOR BIN ENCLOSURE SCREEN WALLS, SAFETY POSTS, AND GATES ARE ADDRESSED IN COM DETAIL M-62.04.
- STANDARDS FOR PROPERTIES APPROVED FOR BARREL SERVICE ARE ADDRESSED IN COM DETAIL M-62.05.
- RESTAURANTS MUST PROVIDE A SEPARATE ENCLOSED AREA TO ACCOMMODATE THEIR GREASE TRAP. THIS DESIGNATED AREA MUST NOT INTERFERE WITH THE TRASH/RECYCLING COLLECTION.
- SOLID WASTE ENCLOSURES MAY INCLUDE WATER CONNECTIONS & DRAINS TO FACILITATE CLEANING OF DUMPSTERS. THESE SHOULD BE LOCATED TO NOT IMPEDE THE ENCLOSURE OPENING (AND GATING IF REQUIRED). ADDITIONAL ITEMS SUCH AS LANDSCAPING CONTROL BOXES AND LIGHTING MAY BE POSITIONED ON THE OUTSIDE OF THE ENCLOSURE WALLS.
- TREE PLANTING SHOULD NOT TAKE PLACE WITHIN TEN (10) FEET OF THE BIN ENCLOSURE AND SHOULD BE SPACED SO AS NOT TO CREATE AN AERIAL OBSTRUCTION FOR THE BIN DUMPING AT THE FINAL FULL GROWTH DIMENSIONS.

mesa **SINGLE AND DOUBLE-WIDE BIN ENCLOSURES - NOTES**
 DETAIL NO. M-62.02.2
 REV. 02/10/2015

DATE	REVISION	REMARKS
2021-09-07	MESA DESIGN	REVIEW BD. SUBMISS.
2021-10-11	MESA DRB	RESUBMITTAL
2022-04-13	MESA DRB	UPDATE /SRP
1	2023-02-06	CITY REVISION / DRB AMENDMENT
2	2023-03-13	CITY COMMENTS

PA / PM: R. SOUTH
 DRAWN BY: JD
 JOB NO.: PHX21-0031

SHEET
A6.1
 FILED: 10 MAR 2023



SCANNEL WARNER GATEWAY
 202 INDUSTRIAL PARK
 8833 E. WARNER ROAD
 MESA, ARIZONA 85003

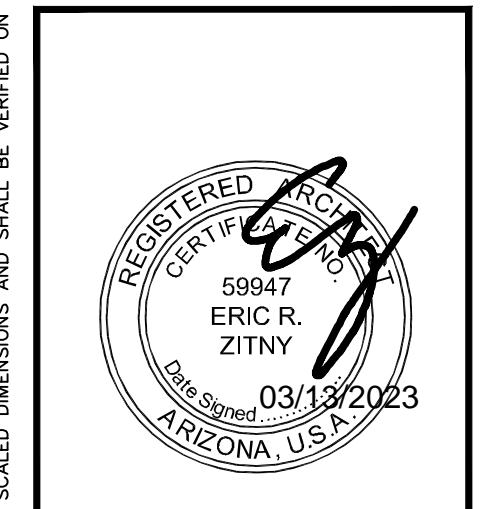
WARE MALCOMB
 Leading Design for Commercial Real Estate

architecture
 planning
 interiors
 graphics
 civil engineering

10 eledrum
 17001
 948 948 0128
 949 863 1581

WARE MALCOMB
 Leading Design for Commercial Real Estate

architecture
 planning
 interiors
 graphics
 civil engineering
 10 eledrum
 drive, suite 100
 phoenix, az 85012
 f 480.863.1581

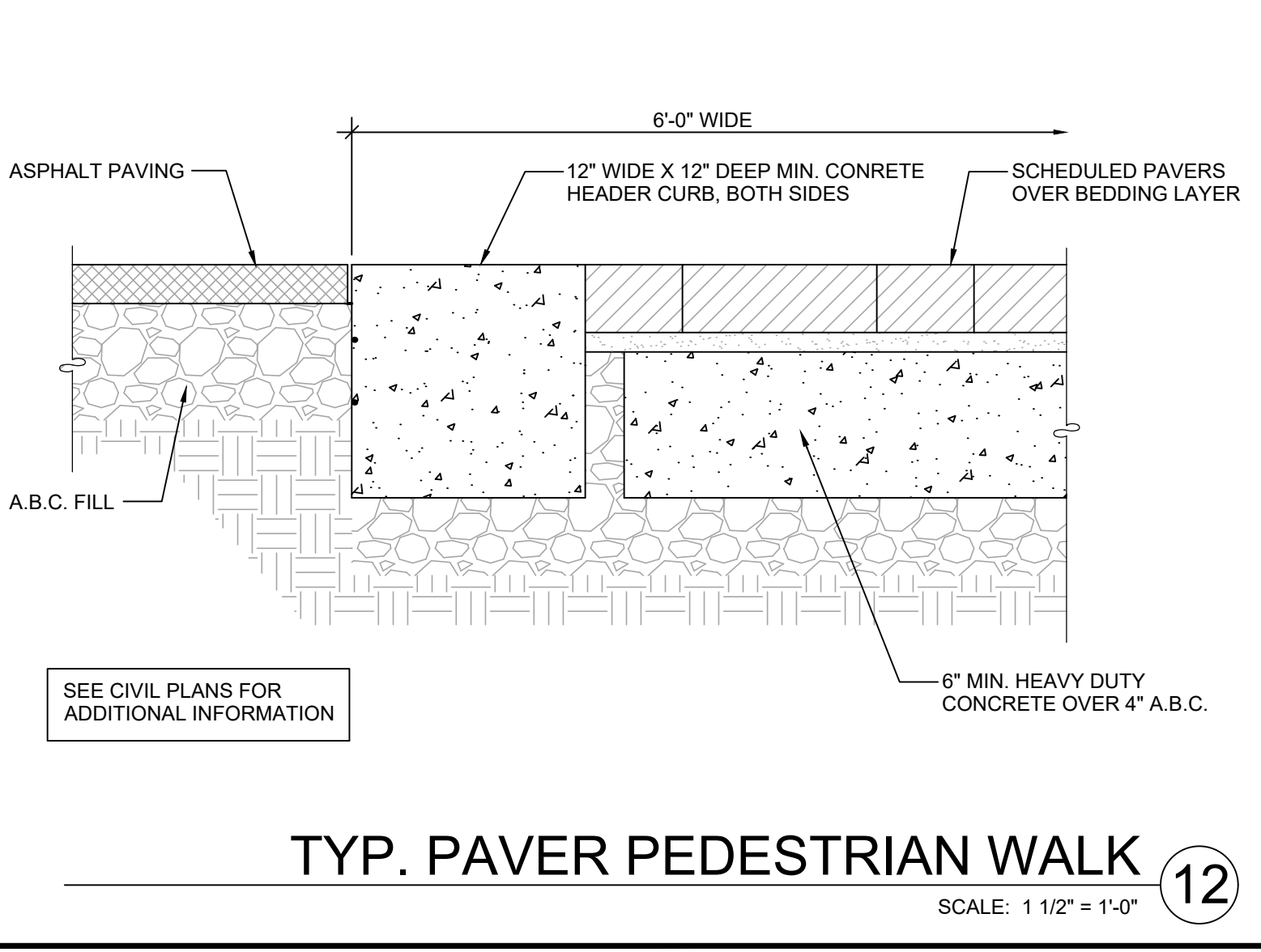
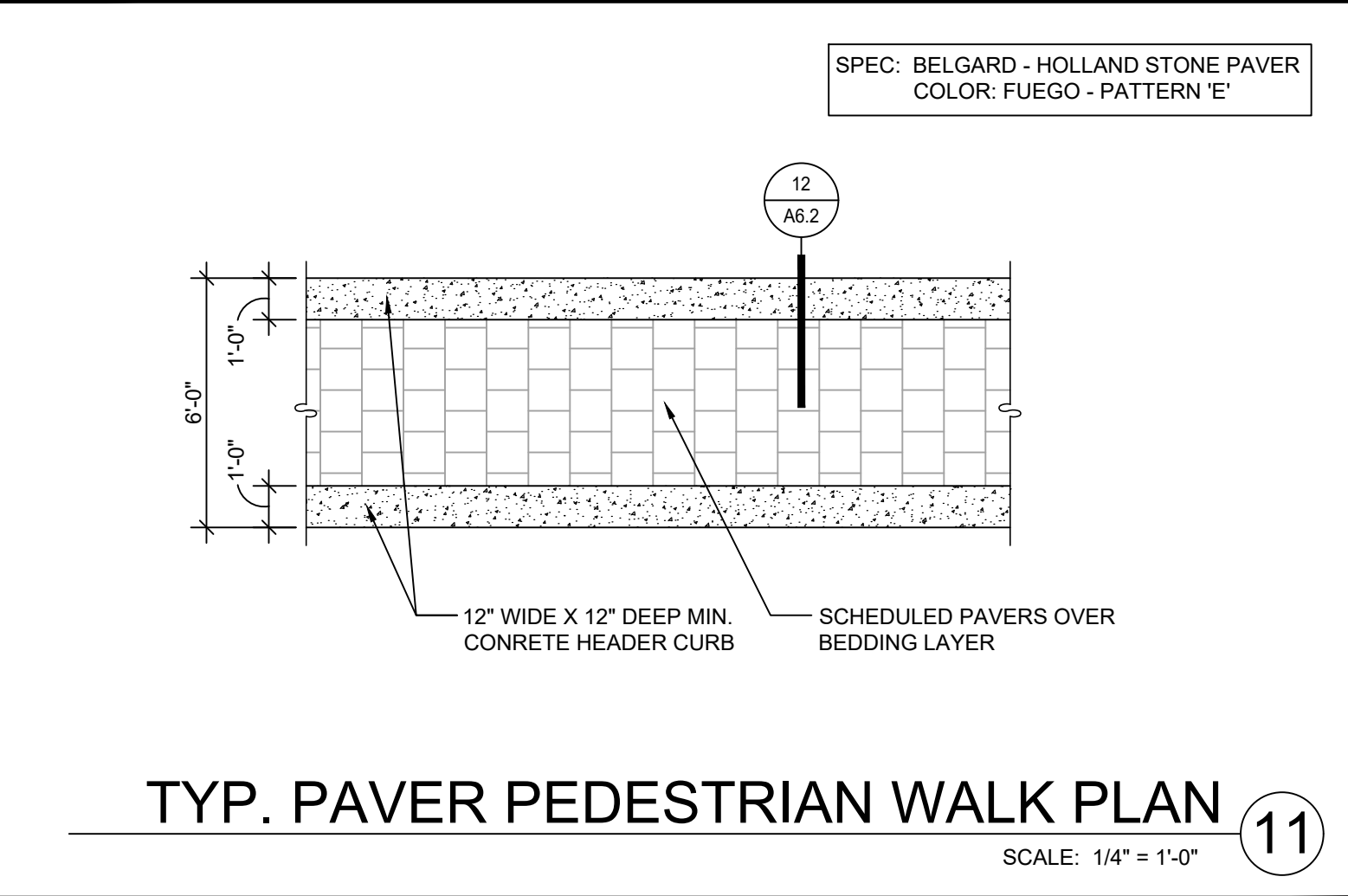
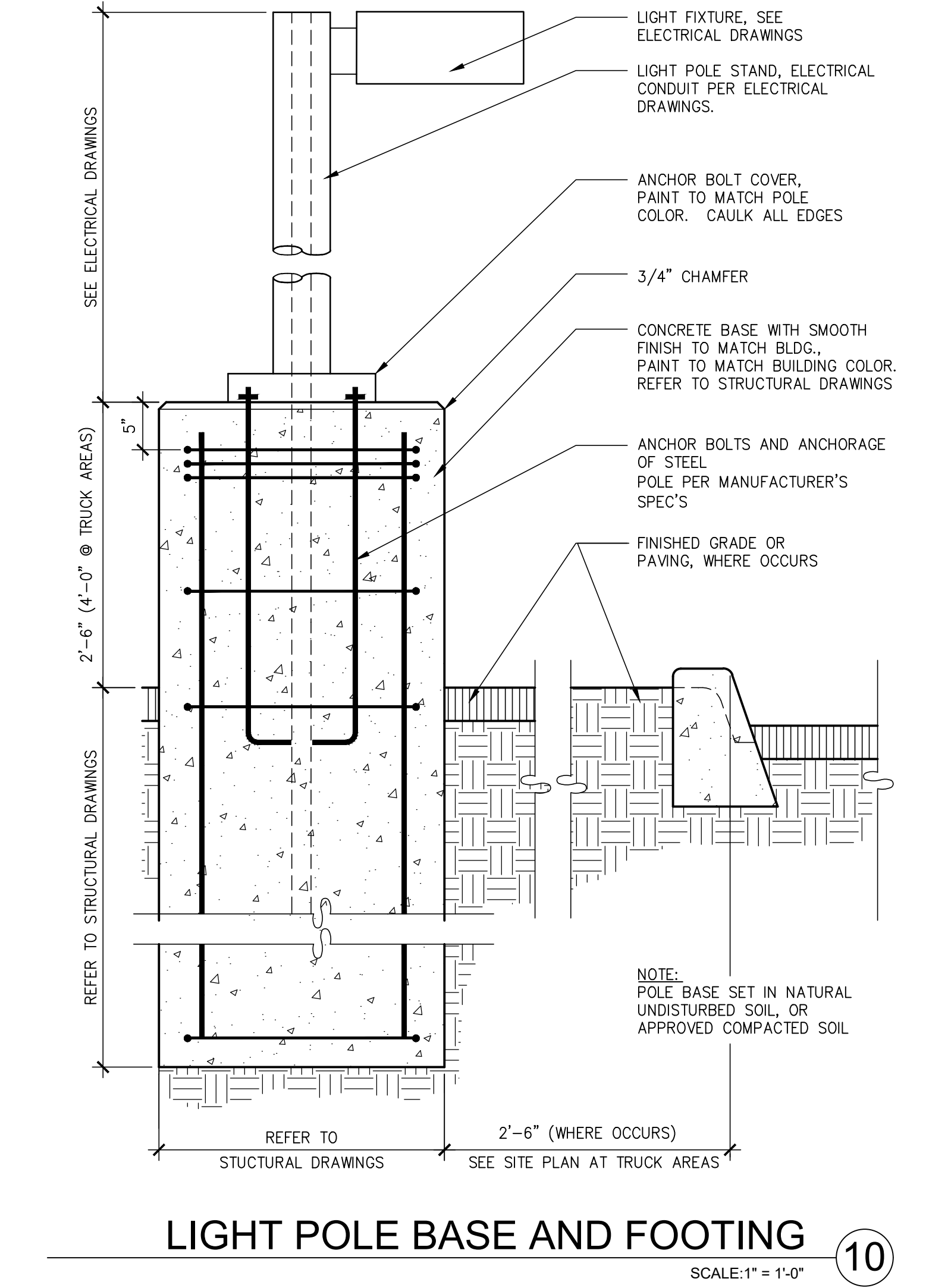
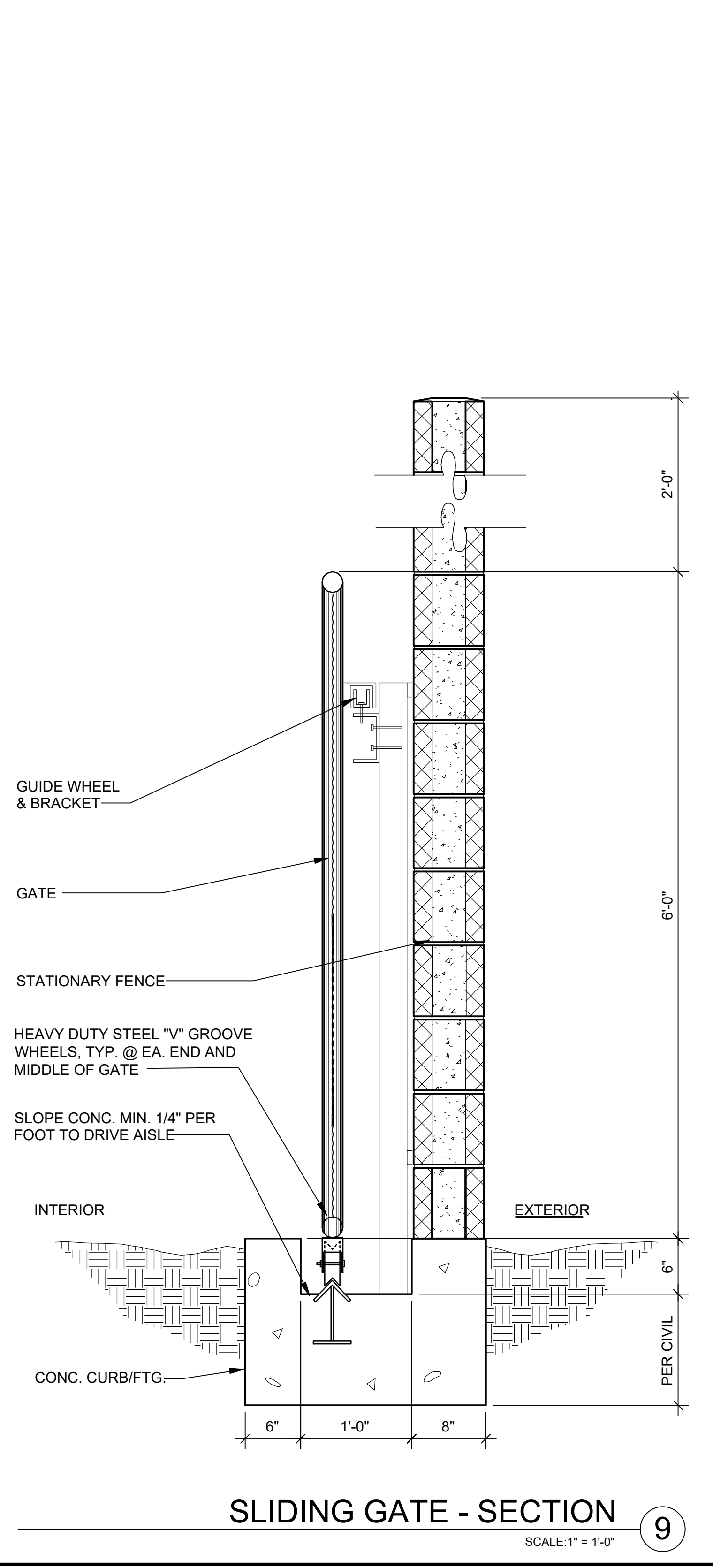
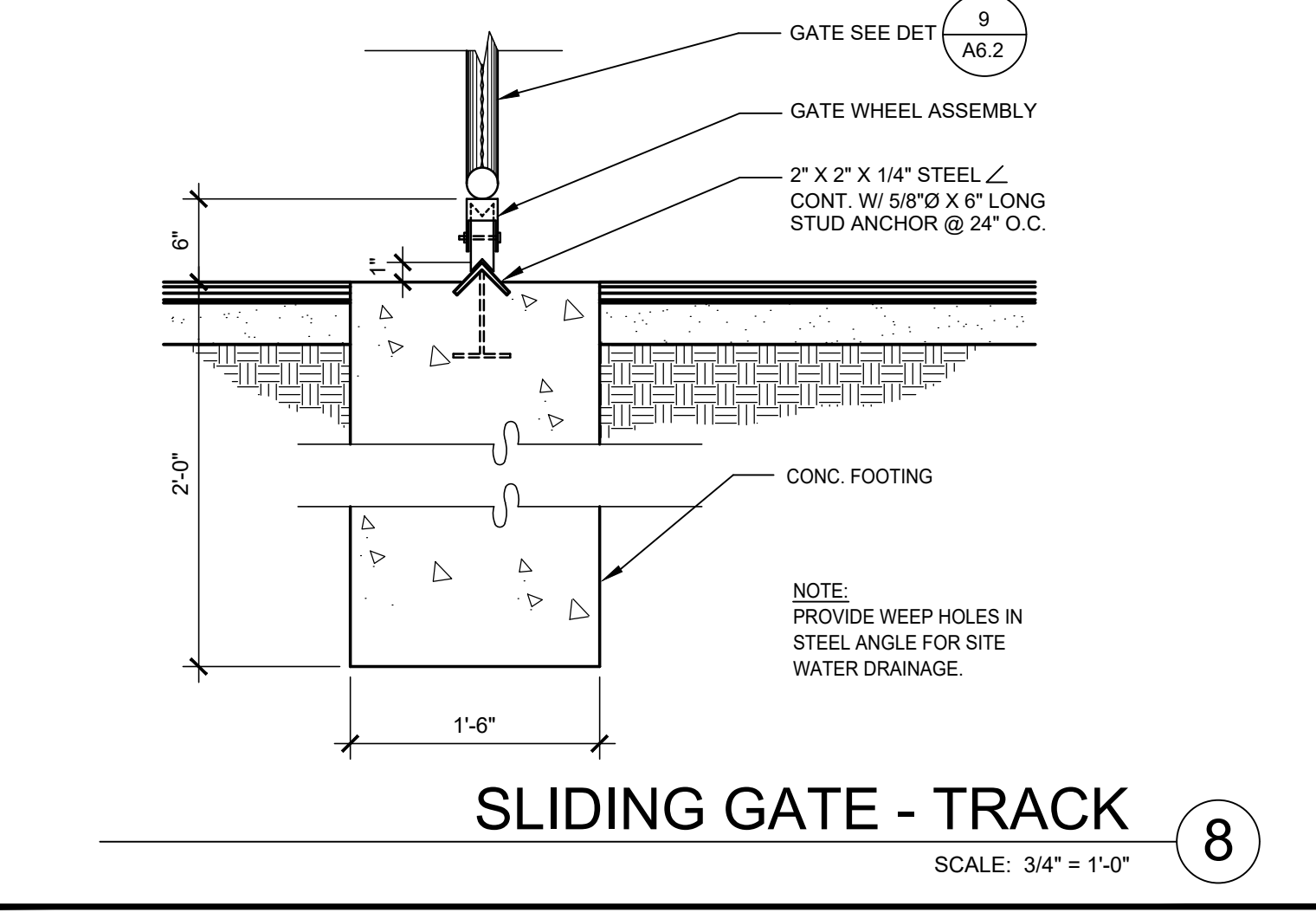
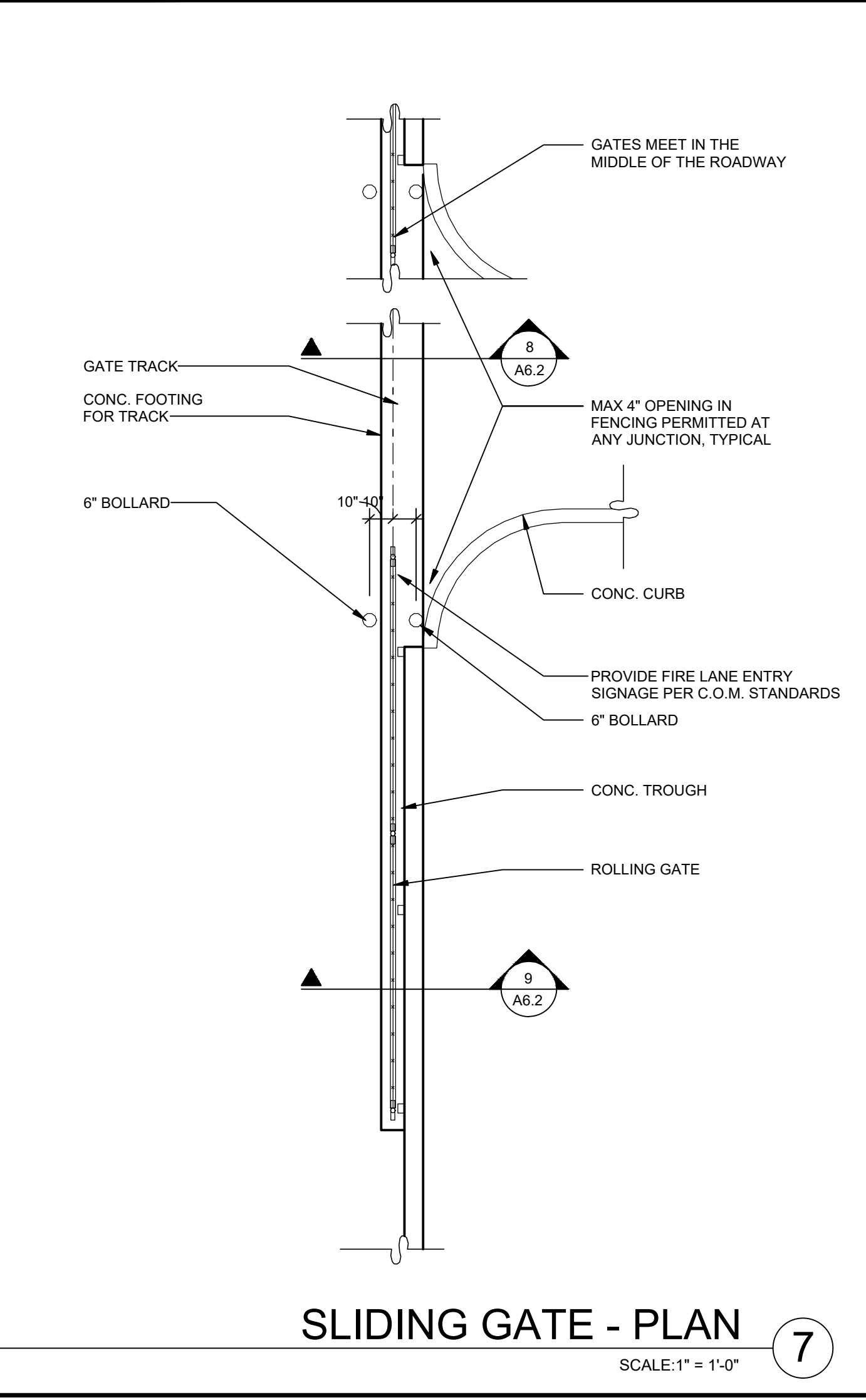
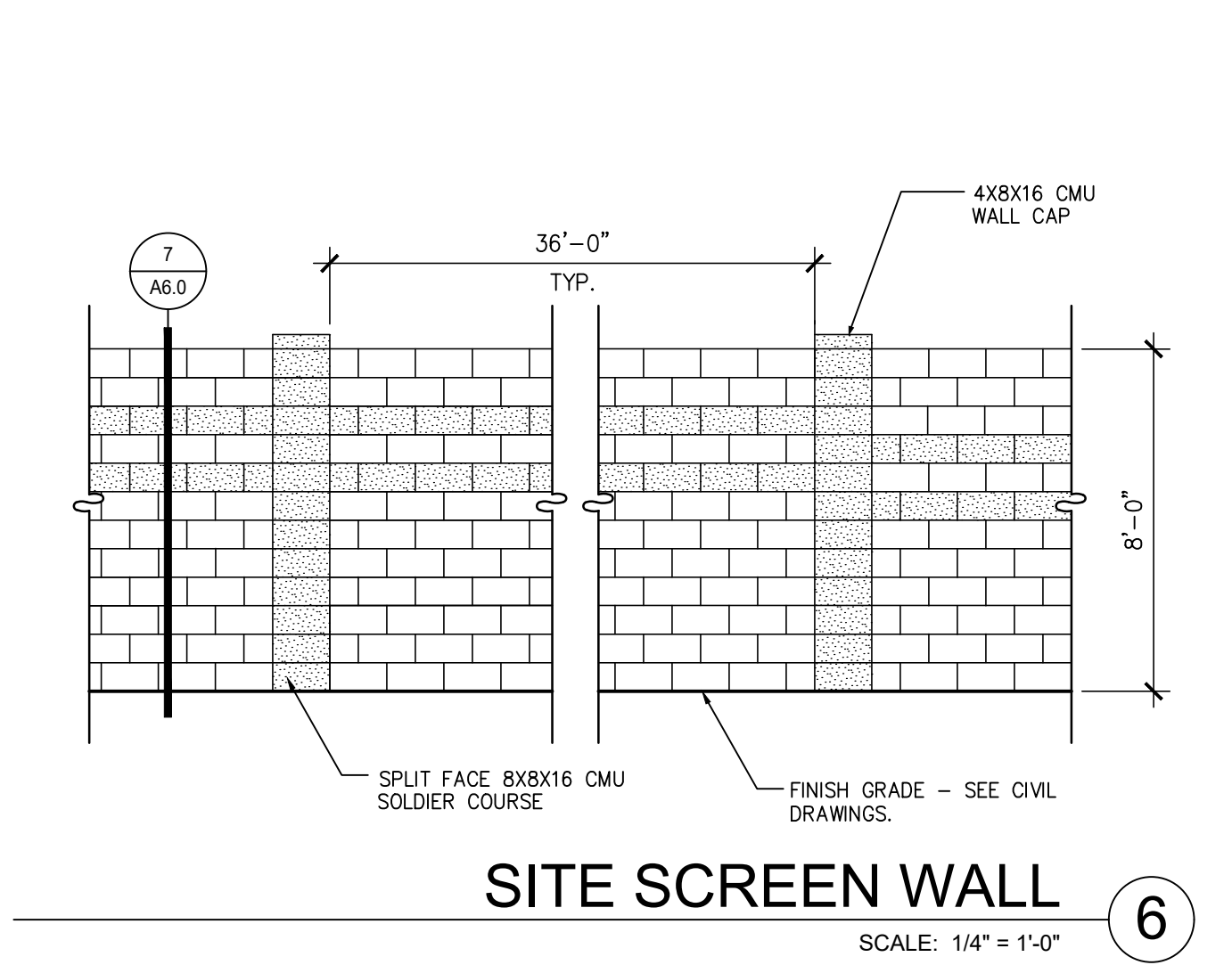
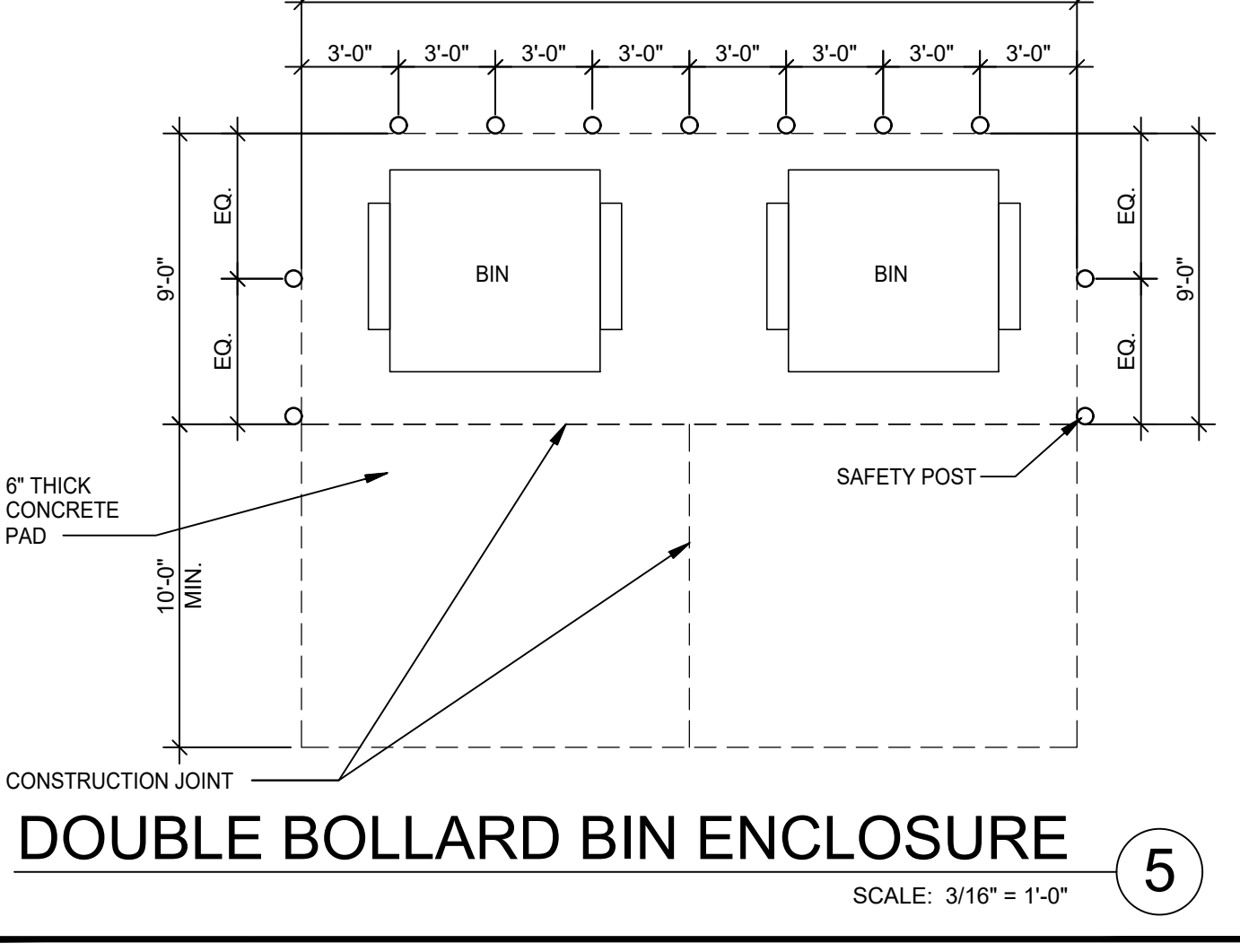
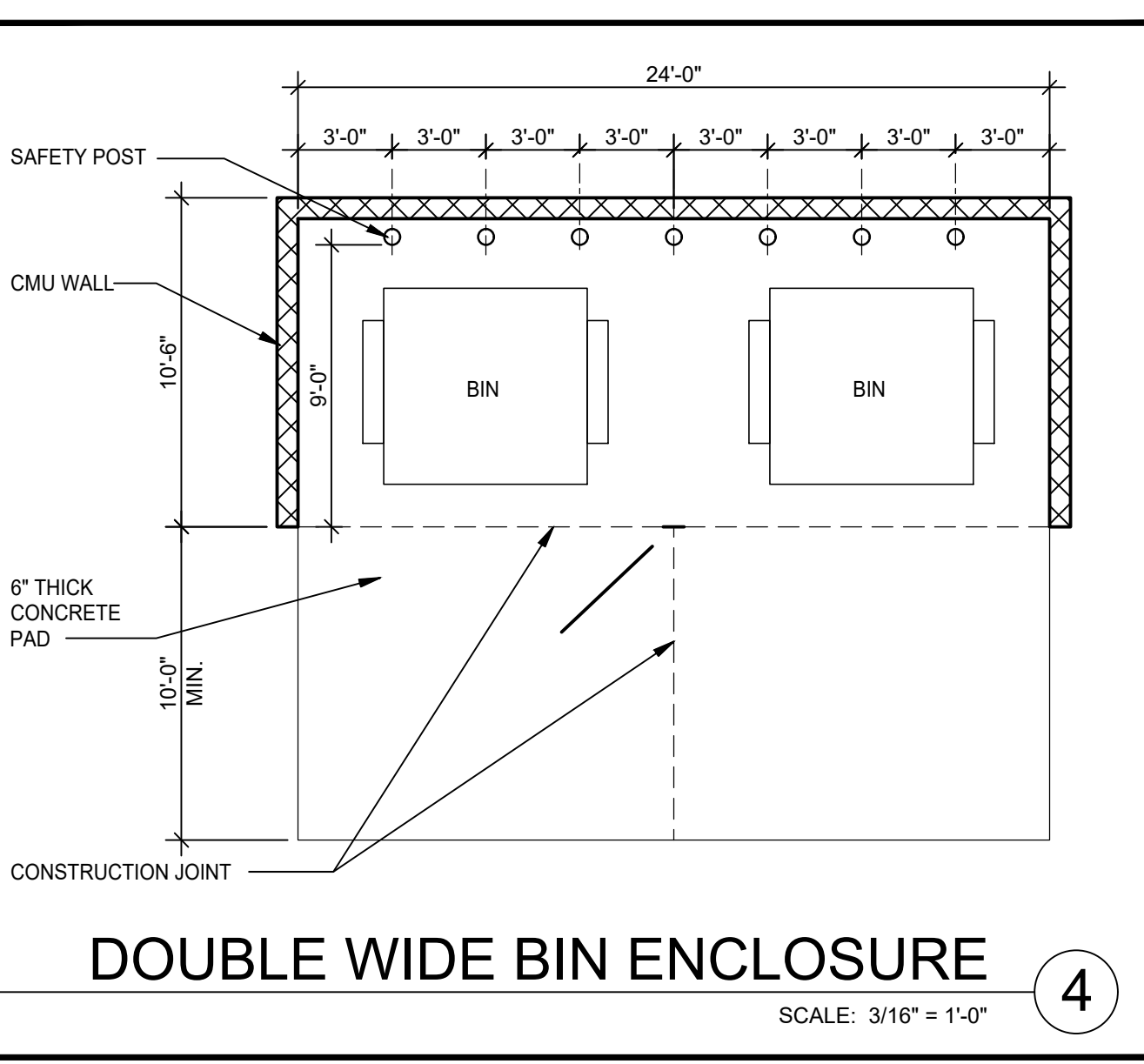
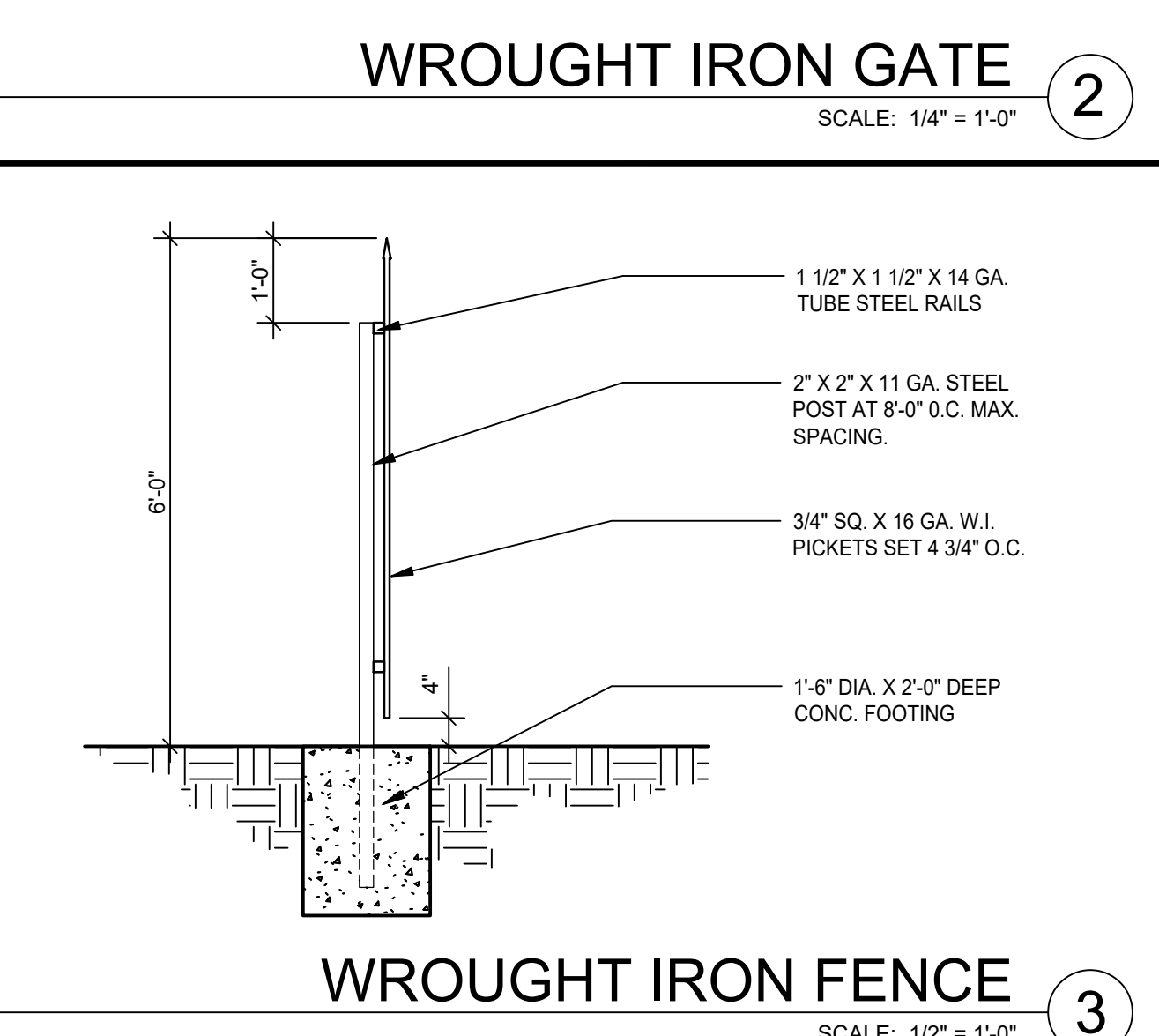
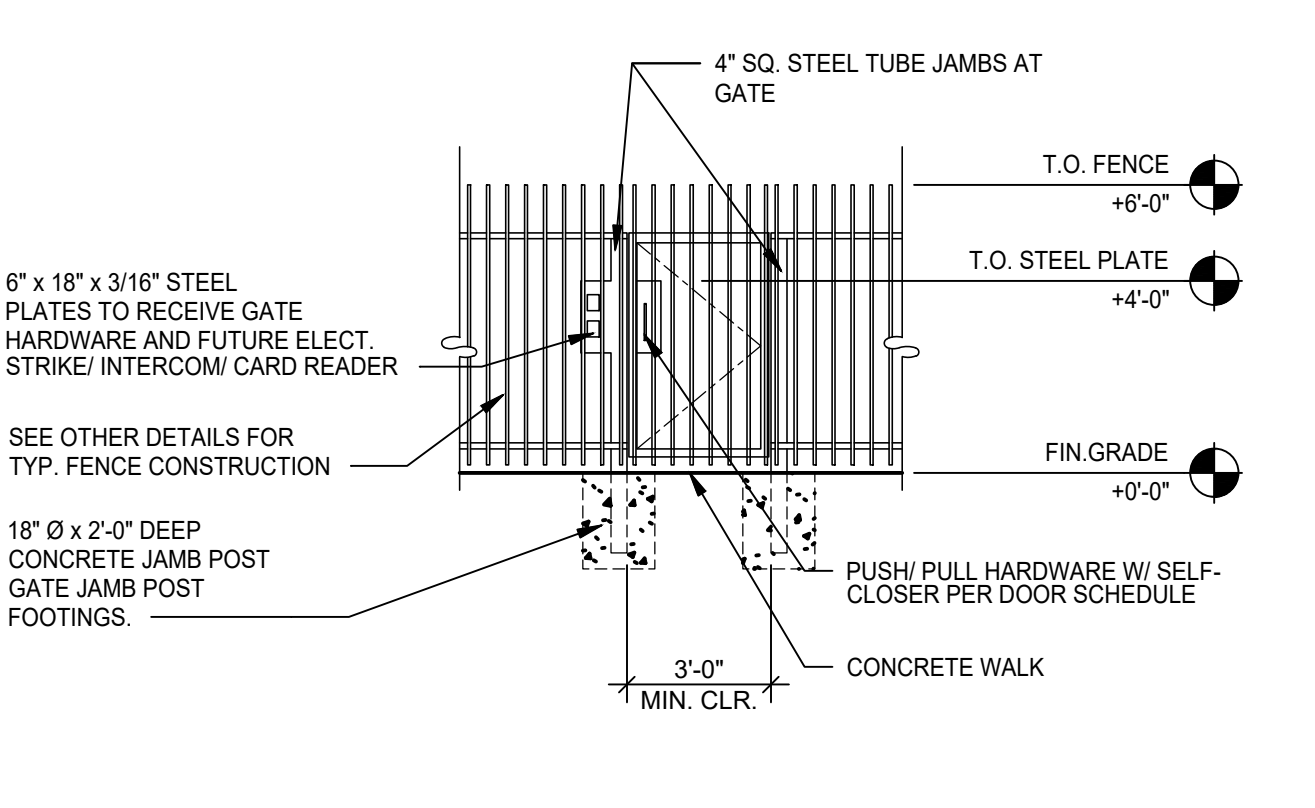
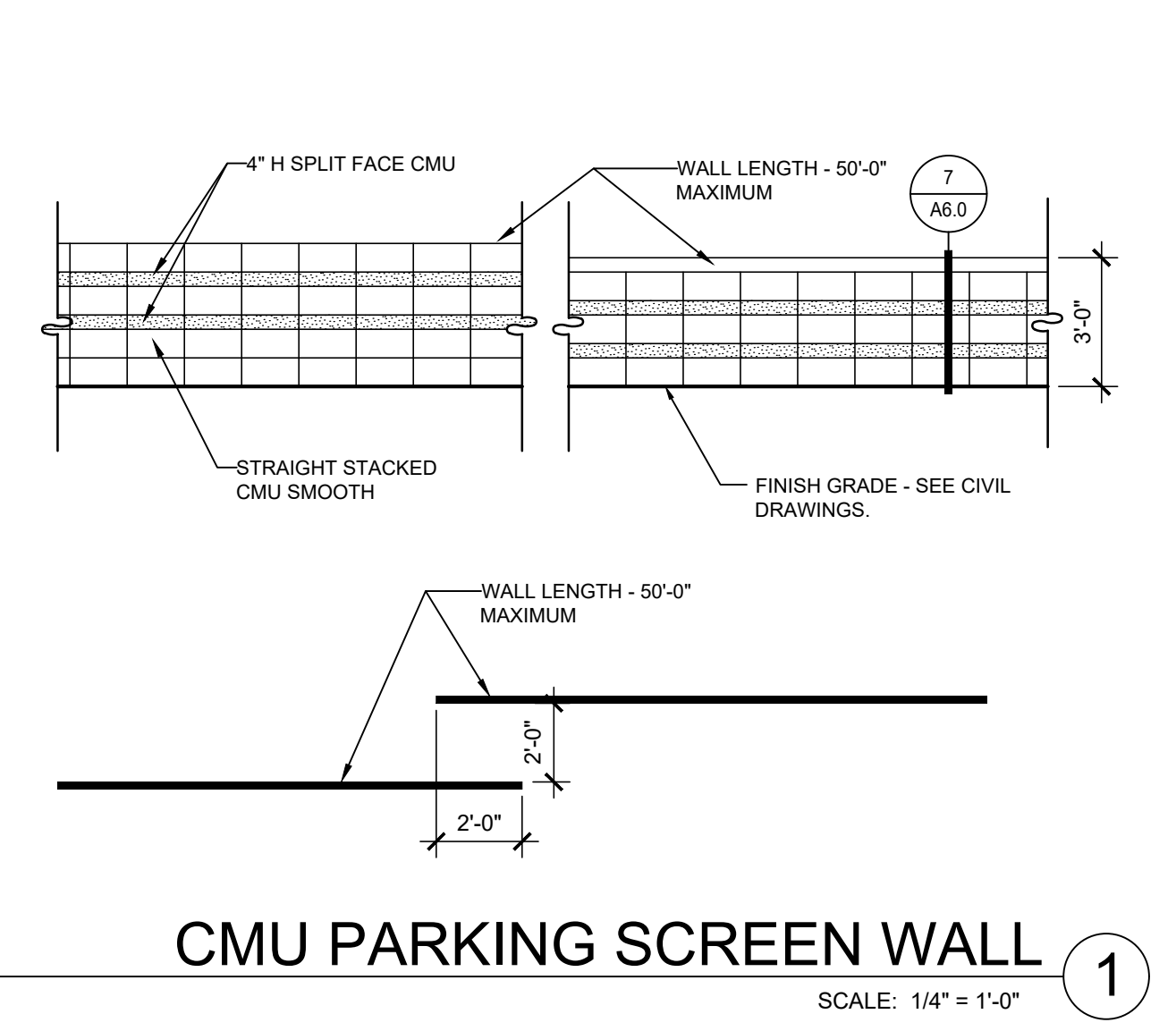


SCANNEL WARNER GATEWAY
 202 INDUSTRIAL PARK
 8833 E. WARNER ROAD
 MESA, ARIZONA 85003

DATE	REVISIONS	REMARKS
2021-09-07	MESA DESIGN	REVIEW BD. SUBMISS.
2021-10-11	MESA DRB	RESUBMITTAL
2022-04-13	MESA DRB	UPDATE/DRP
2023-02-06	SITE REVISION	DRB AMENDMENT
2023-03-13	CITY COMMENTS	

PA / PM: R. SOUTH
 DRAWN BY: CG
 JOB NO.: PHX21-0031

SHEET
A6.2
 FILED 10 MAR 2023



W:\PHX\21\0031\01\Architectural\Cad\Sysco\0031_A6.2_Details.dwg