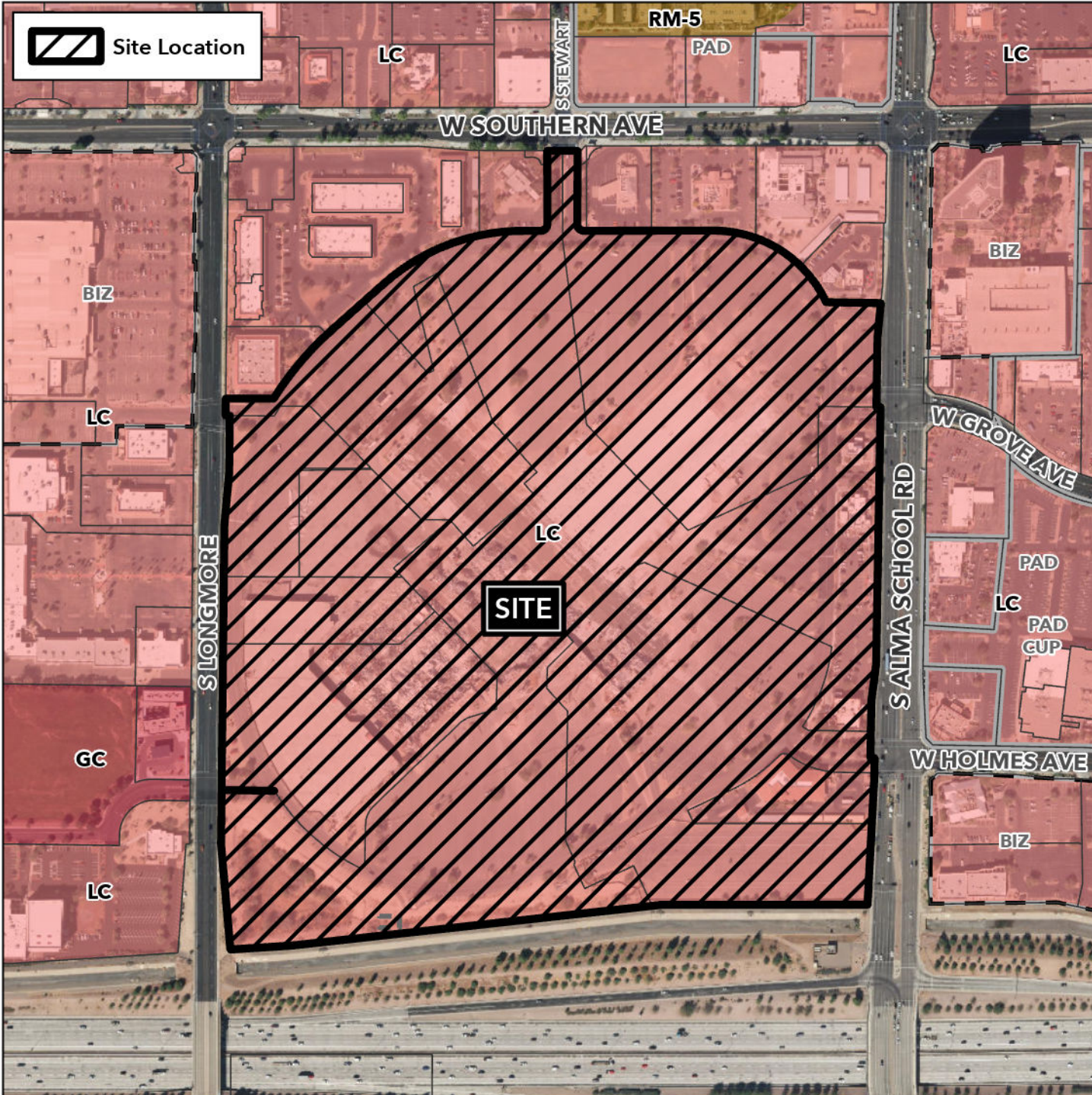


# Planning and Zoning Vicinity Map: ZON23-00859

# Case Details



### Case:

ZON23-00859

### Site / Address:

(District 3) Within the 1300 to 1600 blocks of South Longmore (east side), within the 1300 block of West Southern Avenue (south side), and within the 1200 to 1600 blocks of South Alma School Road (west side). Located south of Southern Avenue and west of Alma School Road. (80± acres).

### Request:

Rezone from Limited Commercial (LC) to Infill Development District-2 (ID-2). This request will allow for a mixed-use development.

