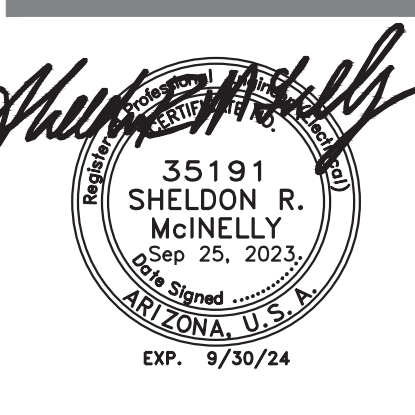


D-Series Size 0 LED Area Luminaire. Specifications: EPA: 0.44 ft² (0.44 m²), Length: 26.18" (66.5 cm), Width: 14.06" (35.2 cm), Height H1: 2.26" (5.7 cm), Height H2: 7.46" (19.0 cm), Weight: 23 lbs (10.4 kg). Ordering Information table with columns for Series, LEDs, Color temperature, Color Rendering Index, Distribution, Voltage, Mounting, and Shipped included.

D-Series Size 1 LED Wall Luminaire. Specifications: Width: 13-3/4" (34.9 cm), Depth: 10" (25.4 cm), Height: 6-3/8" (16.2 cm), Weight: 12 lbs (5.4 kg). Back Box (BBW, E20WC) dimensions: Width: 13-3/4" (34.9 cm), Depth: 4" (10.2 cm), Height: 6-3/8" (16.2 cm), Weight: 5 lbs (2.3 kg). Ordering Information table with columns for Series, LEDs, Drive Current, Color temperature, Distribution, Voltage, Mounting, and Control Options.

Pinnacle Design Inc logo and address: 1048 N. 44th St. #200 Phoenix, AZ 85008 602.952.8585 www.pdi-az.com



COPYRIGHT PINNACLE DESIGN, INC. 2023

Schedule table with columns: Symbol, Label, Quantity, Manufacturer, Catalog Number, Description, Number Lamps, Lumens Per Lamp, Light Loss Factor, and Wattage. Lists various luminaire models and their specifications.

LITHONIA LIGHTING LDN6 STATIC WHITE. Features & Specifications: INTENDED USE, CONSTRUCTION, OPTICS, A+ CABLE LUMINAIRE, UGR, ELECTRICAL, LUMEN MAINTENANCE, LISTINGS, BUY AMERICAN ACT, WARRANTY. Performance Data table for LDN6 3500K AR LSS (8CRI) with columns for Nominal Lumens, Lumens, Wattage, and Lm/W. Includes photometric diagrams for Open and Wallwash beam patterns and dimensions.

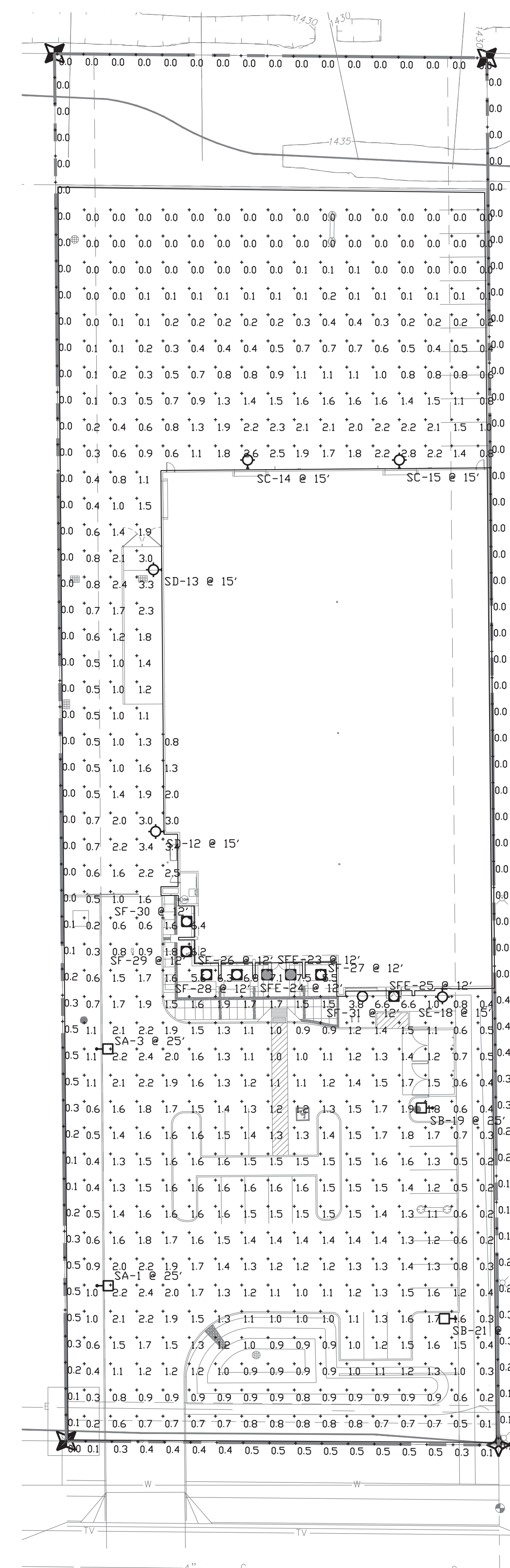
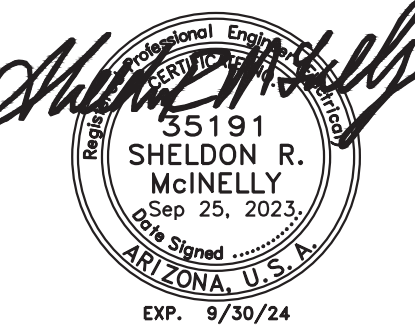
SIGNAL BUTTE MESA, AZ 85212

PROJECT #: 23.019.0 DATE: 9.29.23 DRAWN BY: REV # DATE DESCRIPTION

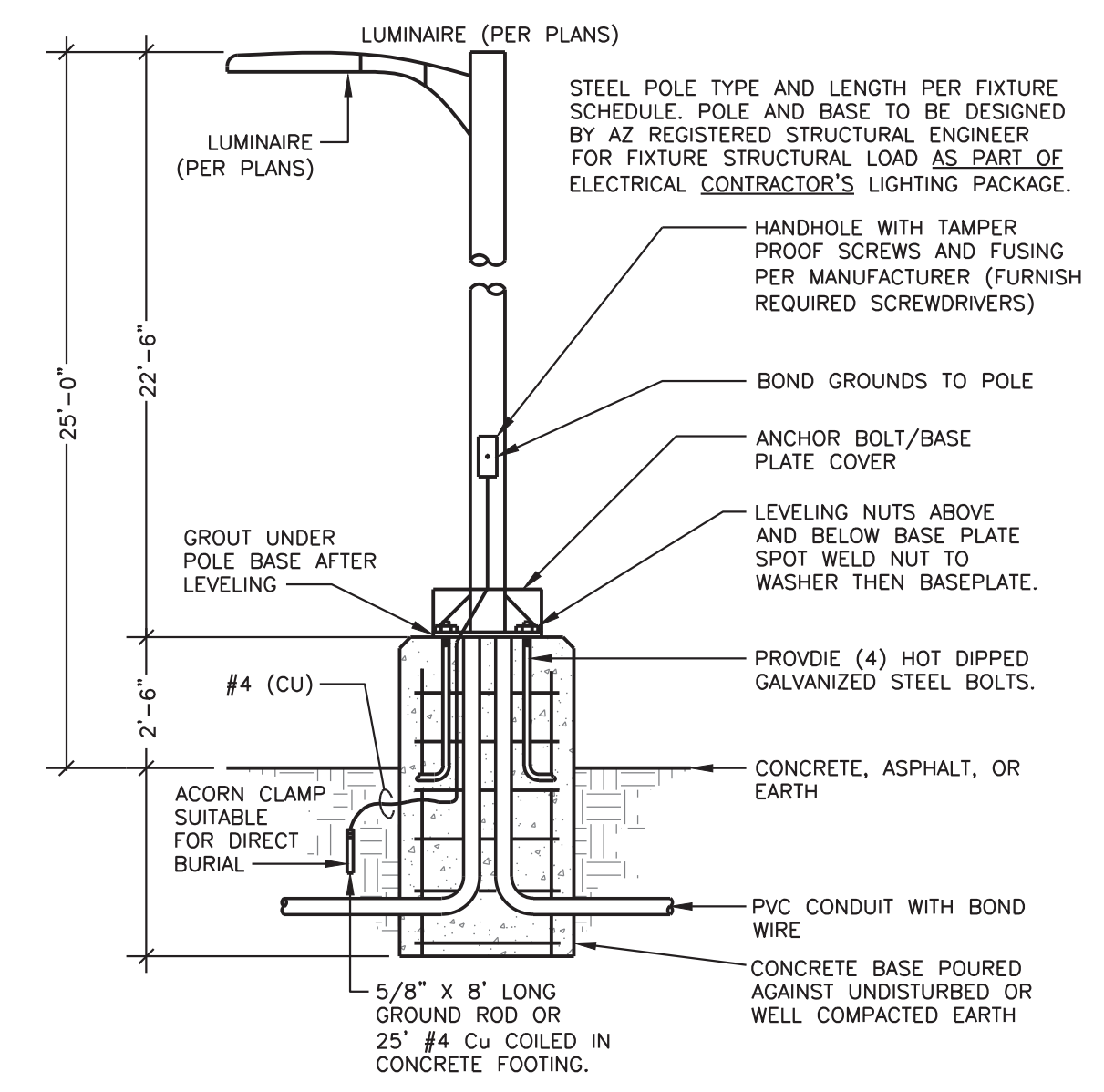
AKRIBIS ENGINEERING, L.L.C. 3231 SOUTH COUNTRY CLUB WAY, STE. 102 TEMPE, ARIZONA 85282 P: (602) 393-0201 F: (602) 393-0202 DRAWN BY: SM CHECKED BY: SM JOB NUMBER: 23229

PHOTOMETRIC DETAIL PH-2 PLEASE RECYCLE logo

File=C:\2023\23229 - Signal Butte Shell\23229 PH-1 PH-2.dwg Date Printed=Sep 25, 2023 9:53:30AM Printed By=Traci



PHOTOMETRIC PLAN
SCALE: 1" = 30'-0"



TYPICAL POLE BASE DETAIL
SCALE: NONE

Statistics						
Description/Symbol	Avg	Min	Max/Min	Avg/Min	Max	
Property	1.1 fc	0.0 fc	N/A	N/A	7.5 fc	
Prop Line	0.1 fc	0.0 fc	N/A	N/A	0.5 fc	

Luminaire Locations					
No.	Label	X	Y	MH	Orientation
3	SA	12.38	149.62	25.00	90.00
12	SD	37.09	232.39	15.00	270.45
13	SD	36.24	332.39	15.00	270.45
14	SC	70.48	370.49	15.00	360.00
15	SC	127.48	370.00	15.00	360.00
18	SF	143.29	172.52	15.00	180.00
19	SB	138.97	126.85	25.00	270.00
21	SB	147.55	46.78	25.00	270.00
23	SFE	85.06	179.73	12.00	0.00
24	SFE	76.84	179.73	12.00	0.00
25	SFE	124.82	170.74	12.00	0.00
26	SF	64.93	179.42	12.00	0.00
27	SF	96.86	179.38	12.00	0.00
28	SF	93.40	179.42	12.00	0.00
29	SF	45.84	186.38	12.00	0.00
30	SF	45.84	198.08	12.00	0.00
31	SF	112.62	170.74	12.00	0.00
1	SA	12.69	58.56	25.00	90.00

SIGNAL BUTTE
MESA, AZ 85212

PROJECT # 23.019.0
DATE: 9.29.23
DRAWN BY:
REV # DATE DESCRIPTION

AKRIBIS
ENGINEERING, L.L.C.
3231 SOUTH COUNTRY CLUB WAY, STE. 102 TEMPE, ARIZONA 85282
P: (602) 393-0201 F: (602) 393-0202
DRAWN BY: SM CHECKED BY: SM JOB NUMBER: 23229

SITE
PHOTOMETRIC
PLAN

PH-1
PLEASE RECYCLE