



# Design Review Board



# DRB24-00898

## Downtown Façade

### 130 W Main

Emily Johnson, Planner I

November 12, 2024



# Request

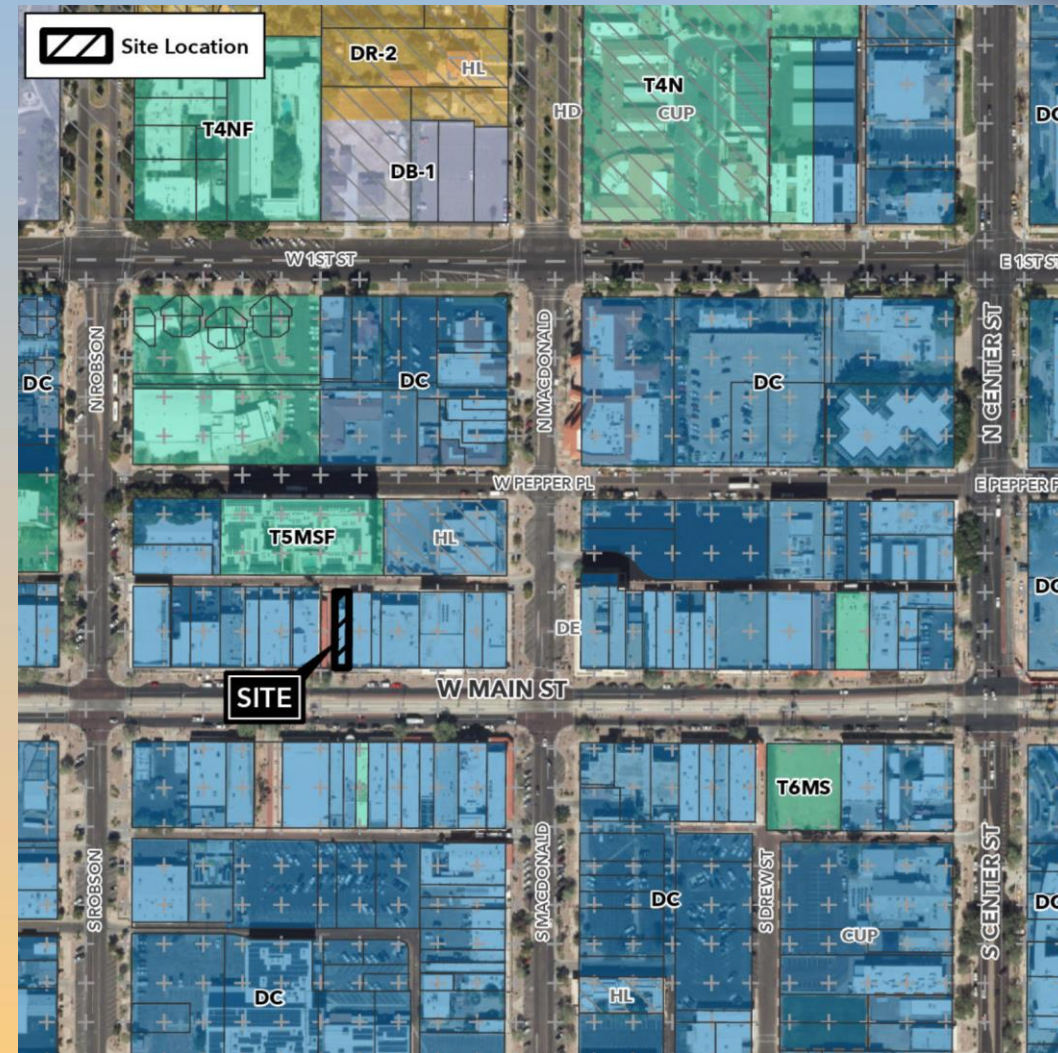
- Design Review
- Downtown façade improvement to existing storefront





# Location

- North side of Main Street
- West of Center Street
- East of Country Club Drive





# Site Photo

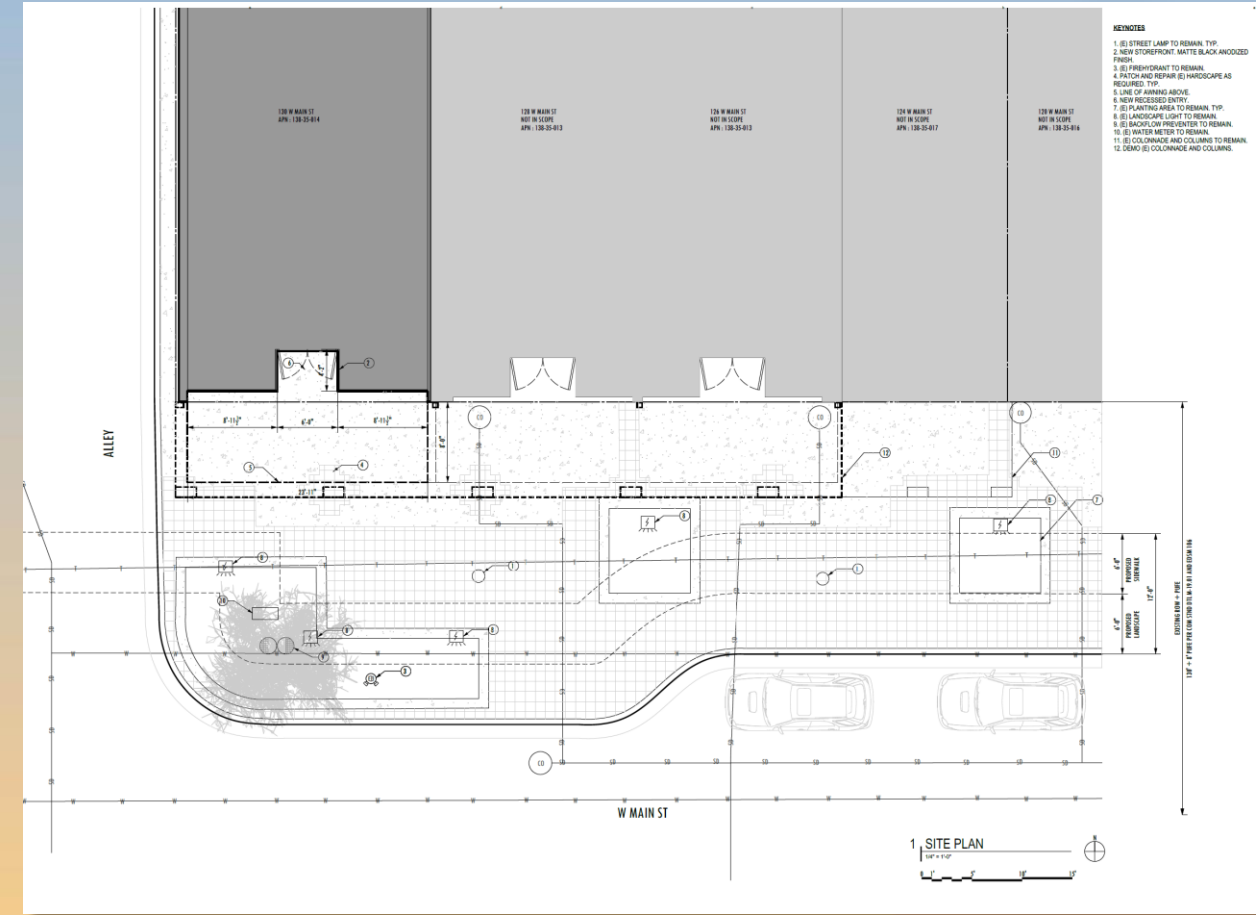


Looking north from Main Street



# Site Plan

- Remove existing colonnade
- Increase building footprint with 4'-2" recessed entry
- New storefront with double doors
- 8' steel awning
- Polycarbonate panels backlit with LED strips with steel header





# Elevations





# Elevations







# Material Board

**BLACK ANODIZED ALUMINUM**

- STOREFRONT

**BLACK TIE (DE6357)**

- STEEL TRELIS  
- STEEL TIE BACKS

**COLD WIND (DE6351)**

- ALL STUCCO

**CLEAR-WHITE POLYCARBONATE**

- TRANSLUCENT PANELS



# Findings

Staff is seeking your review and recommendation on the following:

- ✓ Proposed façade improvement

***Staff welcomes any feedback***



# Design Review Board



# Historic Photos





# Context Photos





# Context Photos



**Status**

- ▼ Future
- ▼ Current
- ▼ Reviewed



N COUNTRY CL

N MORRIS

N ROBSON

N MACDONALD

N CENTER ST

S COUNTRY CLUB DR

S MORRIS

S ROBSON

S MACDONALD

S CENTER ST

W 1ST ST

E 1ST ST

T4NF

DC

DC

DC

T5MSF

W PEPPER PL

HL

150

136

130

128

126

120

104

18

W MAIN ST

DE

155

149

137

121

119

117

113

101

47

45

T6MS

DC

T5MS

W MAHONEY AVE

DC

DC

CUP

W 1ST AVE

E 1ST AVE