

ELEVATION: (C.O.M. DATUM)

### GENERAL NOTES

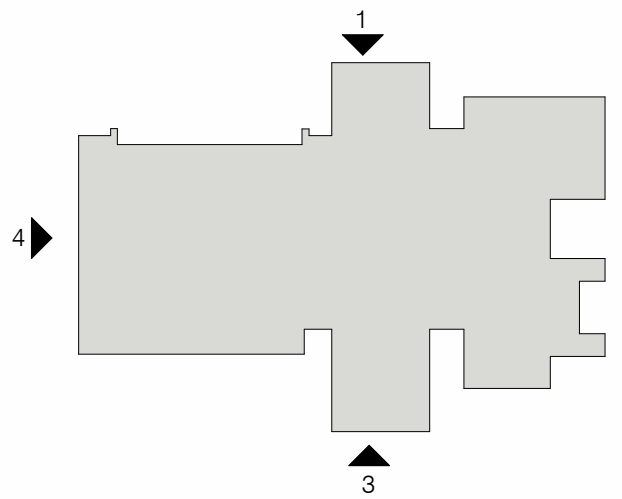
1. INFORM THE ARCHITECT OF ANY DISCREPANCIES BEFORE BEGINNING WORK.
2. ALL SIGNAGE UNDER SEPARATE SUBMITTAL AND PERMIT
3. PROVIDE CONTINUOUS CAULK MATCHED COLORING AT TRANSITION OF ALL DISSIMILAR MATERIALS.
4. CONTRACTOR SHALL CONFIRM AND MARK ALL UNDERGROUND AND OVERHEAD UTILITIES PRIOR TO START OF WORK
5. ALL DIMENSIONS ARE TO MASONRY, CONCRETE, OR STUD FRAMING.
6. CONTRACTOR TO MATCH ALL CAULKING/EXPANSION MATERIAL COLOR TO ADJACENT WALL.

### MATERIAL LEGEND

#	DESCRIPTION
M1	METAL ROOFING MANF: ATAS COLOR: CLASSIC BRONZE
M2	CONCRETE MASONRY UNIT - MESA STONE MANF: SUPERLITE COLOR: MOJAVE BROWN GROUT/SEALANT: COLOR MATCH
M3	CONCRETE MASONRY UNIT - MESA STONE MANF: SUPERLITE COLOR: BLACK MOUNTAIN GROUT/SEALANT: COLOR MATCH
M4	METAL CLADDING, 6" WIDE PLANKS W/ 1/2" GAP MANF: ATAS COLOR: ANCHOR GREY TRIM: COLOR MATCH
M5	DOOR/WINDOW FRAME MANF: TBD COLOR: REDWOOD (07)
M6	APARATUS BAY DOORS MANF: TIGER DRYLAC POWDER COATINGS COLOR: REDWOOD (07)
M7	GLAZING MANUFACTURER: PPG COLOR: SOLARBAN 70 (2) SOLARGRAY

### KEYNOTES

### KEY PLAN

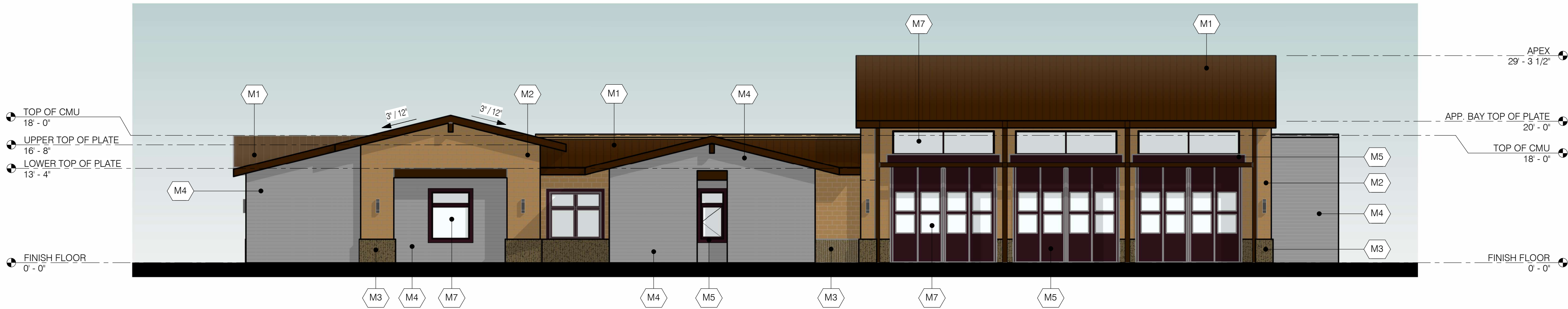


**Perlman**  
Architects of Arizona

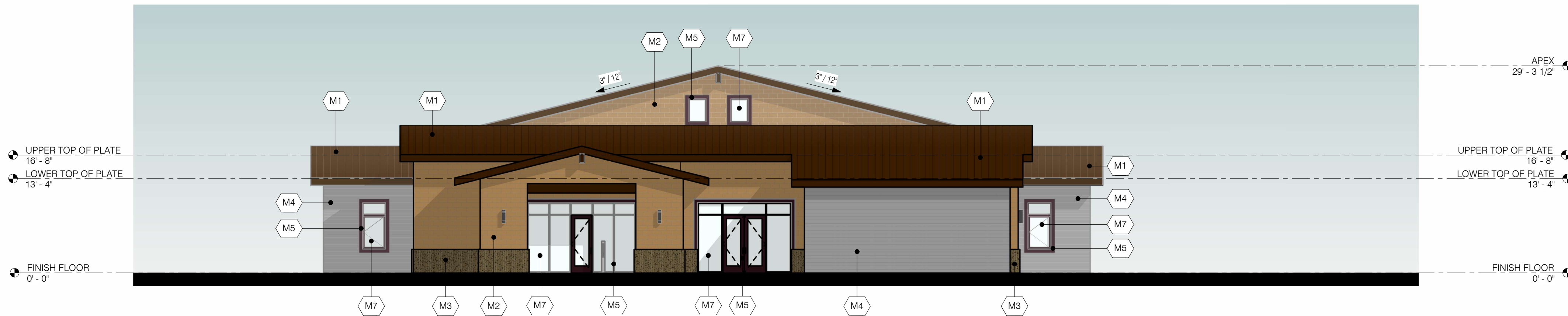


EXPIRES: 12-31-2027  
DRAWN BY: JD  
ENGINEER: JR  
APPROVED BY: JR  
ACTIVITY: C10120  
PROJ. NO.:

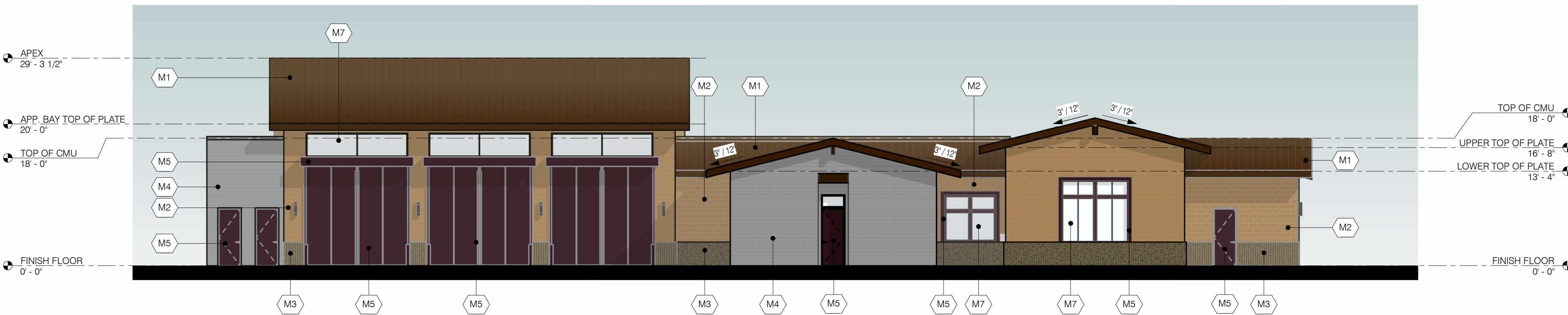
CITY OF MESA  
ENGINEERING DEPARTMENT  
MESA FIRE-MEDICAL STATION NO. 205  
730 S. GREENFIELD RD., MESA 85206  
DRAWING  
**EXTERIOR ELEVATIONS**  
A9.1  
SHEET  
33 OF 49  
CATALOG NUMBER:



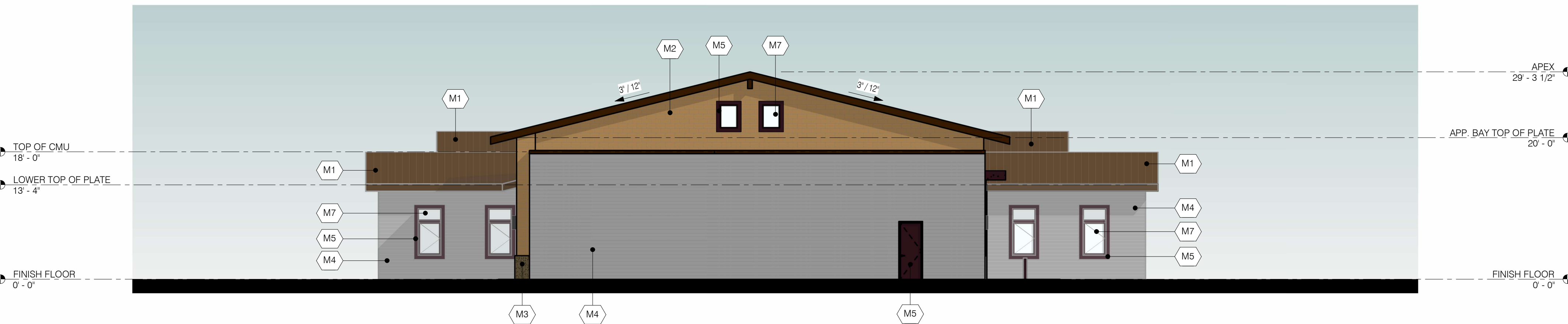
1 EXTERIOR ELEVATION - NORTH  
1" = 10'-0"



2 EXTERIOR ELEVATION - EAST  
1" = 10'-0"



3 EXTERIOR ELEVATION - SOUTH  
1" = 10'-0"



4 EXTERIOR ELEVATION - WEST  
1" = 10'-0"