

Technology Mesa Update

*A collaboratory designed to accelerate the growth
of small businesses in Arizona.*

May 15th 2012





Strategic Initiative

Economic Development Strategic Initiative:



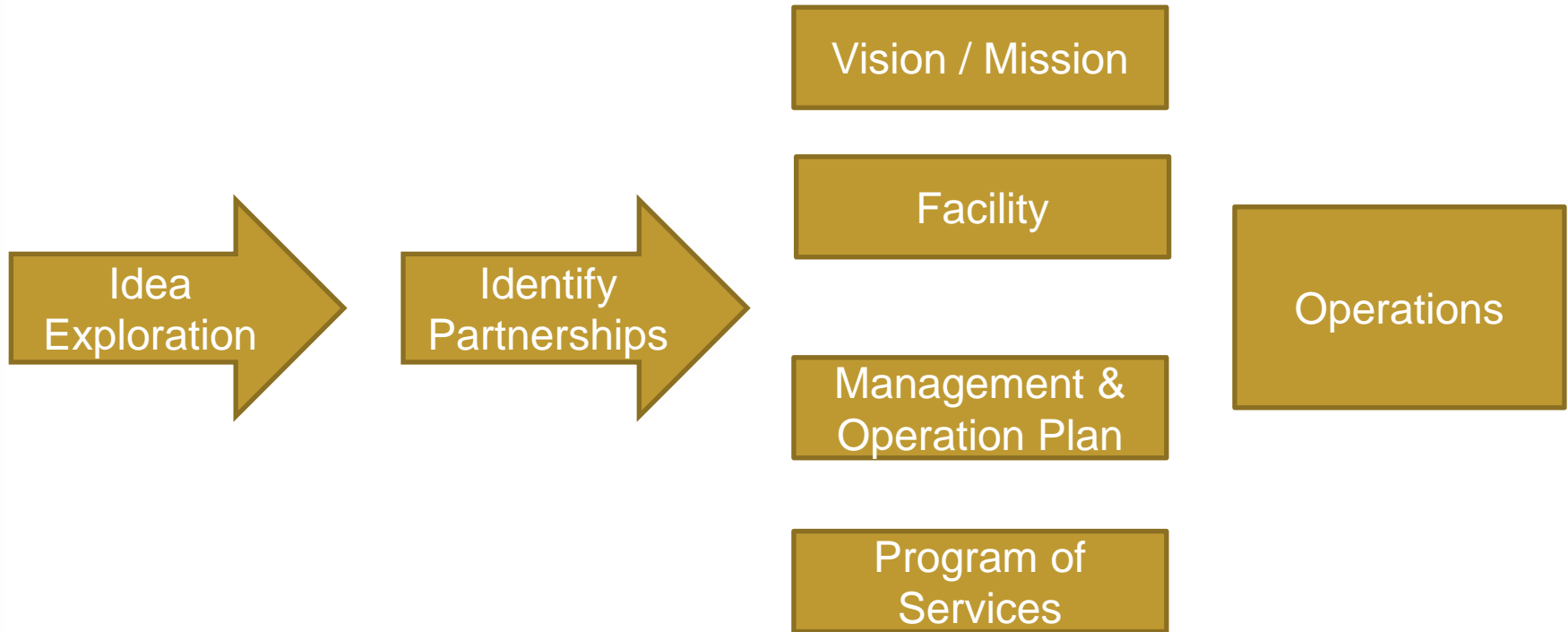
“A new focus on entrepreneurial development of new businesses”

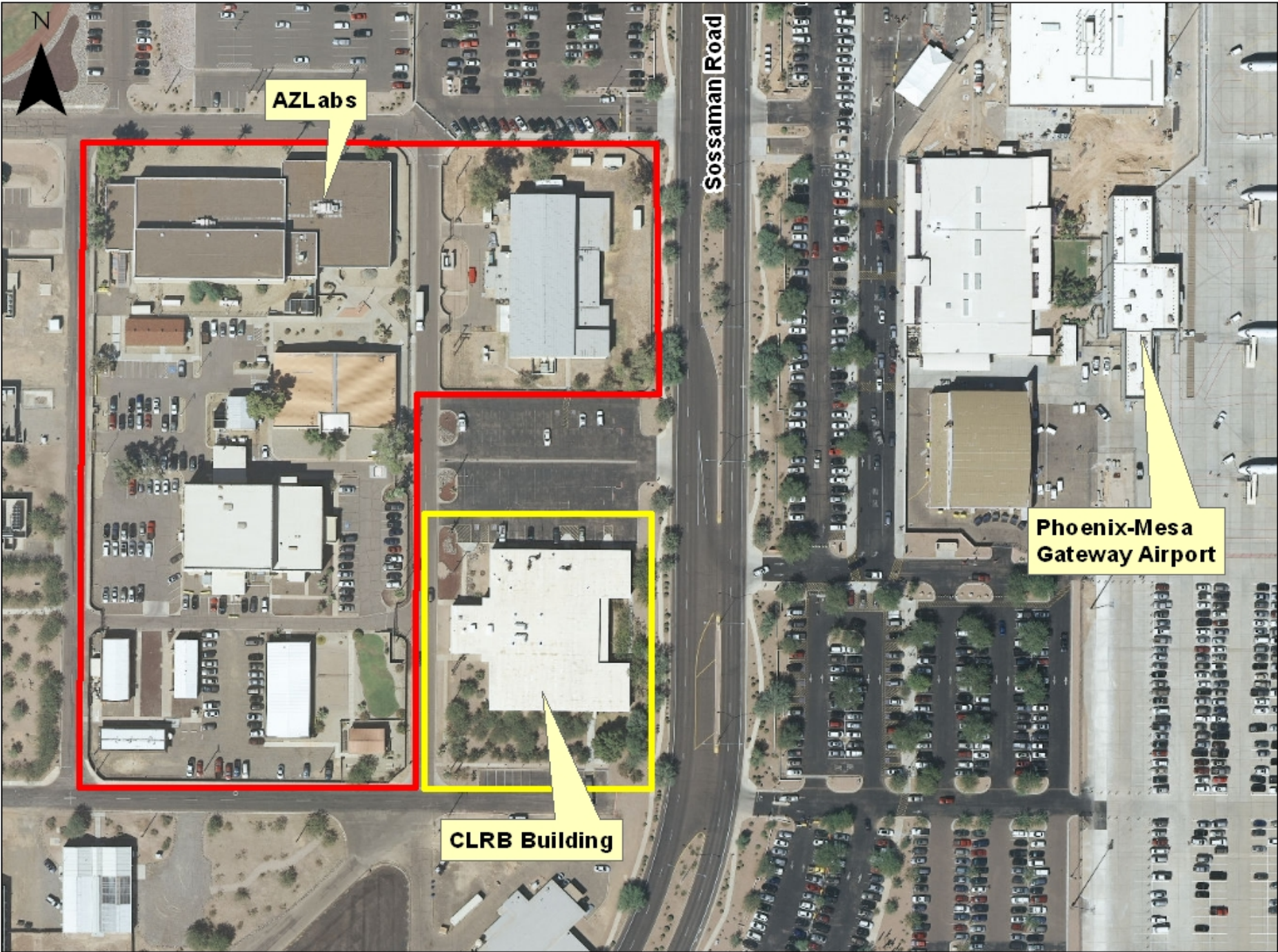
“A focus on development/growth of small business as an engine for our economy”

“Further development of ASU Poly as a business accelerator”



Development Process





AZLabs

Sossaman Road

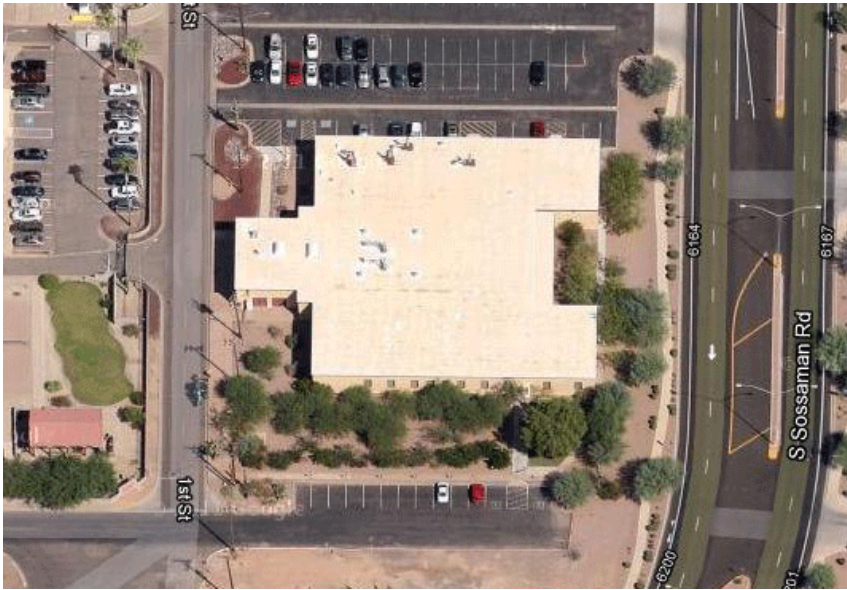
**Phoenix-Mesa
Gateway Airport**

CLRB Building



Facility Update

- **ASU identified an opportunity for the Accelerator in the CLR B Building adjacent to AZLabs**
- **Currently negotiating with ASU to lease approximately 6,400 SF**
- **\$72,000 allocated in 2012-2013 budget for facility improvements and operations**



Aerial View - Looking North



Ground View Of South Entrance



Ground View Of South Entrance



Ground View – East Side of Building





Recent Related Activity

- **January 2012 – Mesa attended inaugural meeting of the Arizona Business Incubator Association**
- **March 2012 – Small Business Development Center (SBDC) hired a Procurement Specialist for the Mesa Procurement Technical Assistance Center**



Around the Valley

- February 2012 - Chandler Innovations announces 25,000 SF expansion
- March 2012 – Gateway Community College opens \$6 million business incubator
- May 2012 – Peoria City Council approves \$1.6 million annual operating plan for bioscience incubator



Next Steps

- **Finalize negotiations with ASU for space**
- **Develop Management and Operations Plan**

Questions/Comments

