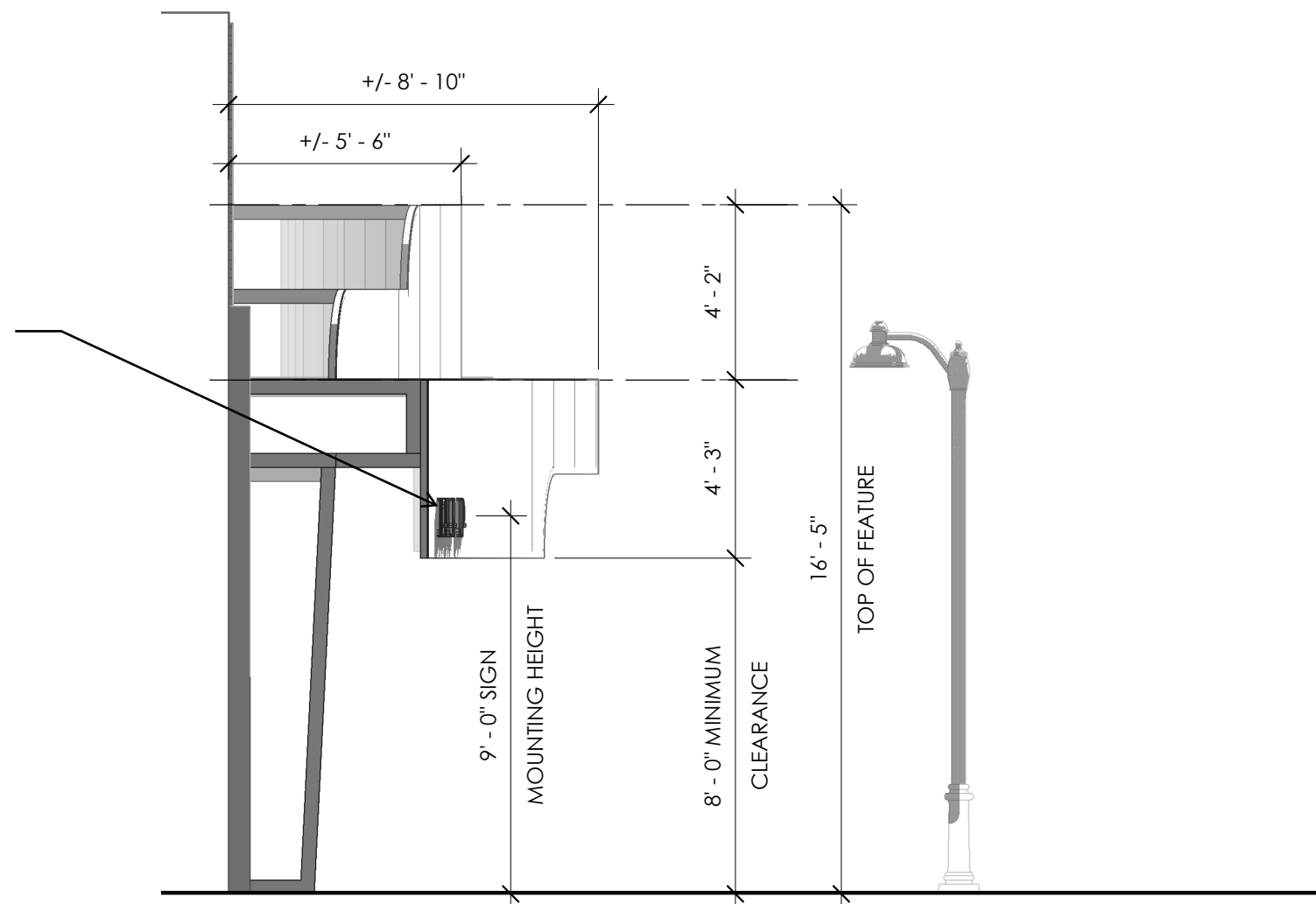


SIGN TO BE REVIEWED
THROUGH A SEPARATE
PERMITTING PROCESS

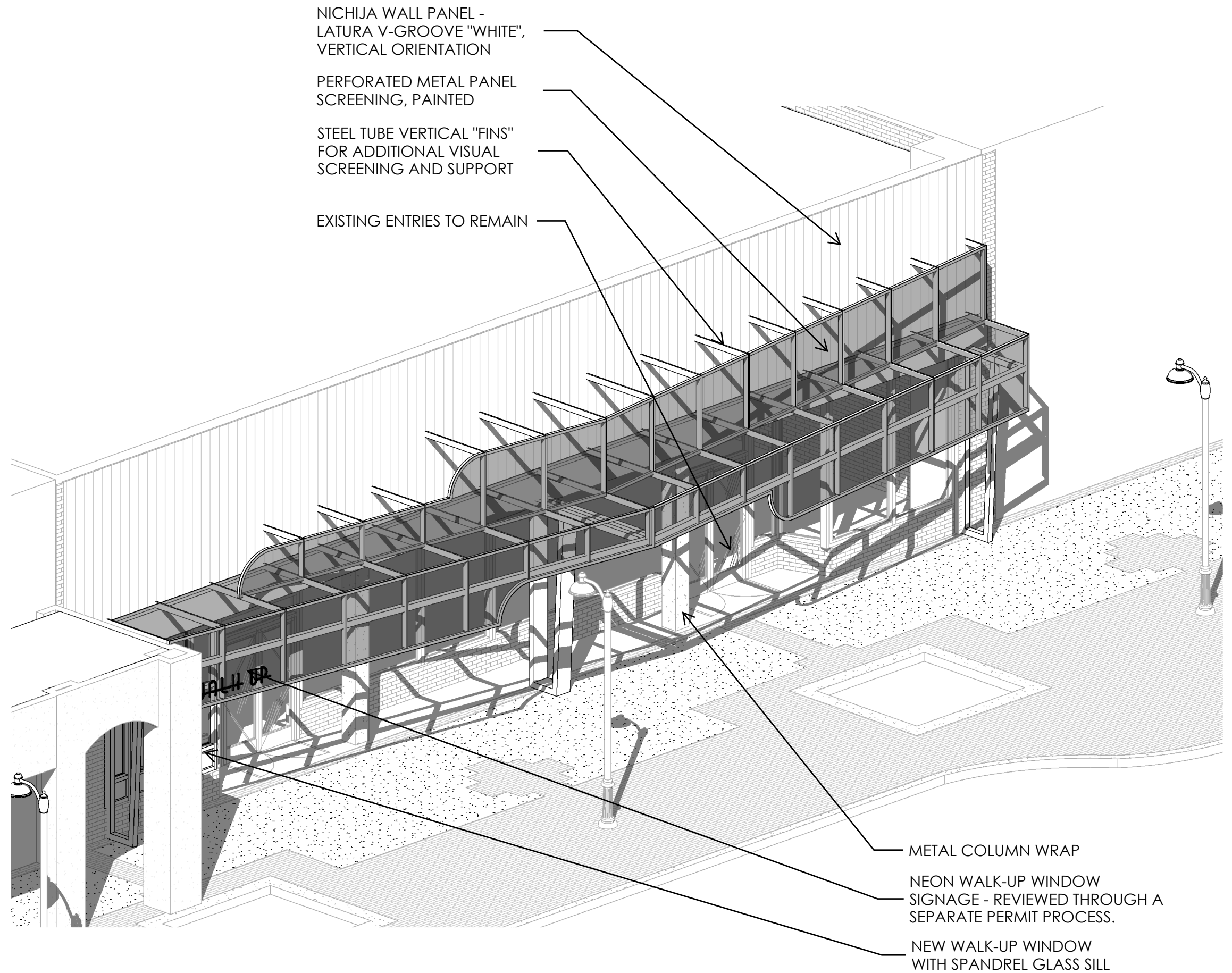


CITY OF MESA
DOWNTOWN MESA FACADES | 120 W MAIN ST
SCALE: 1/4" = 1'-0"

ARCHITECTS & ENGINEERS, INC

WEST ELEVATION

2024



NICHIIJA WALL PANEL -
LATURA V-GROOVE "WHITE",
VERTICAL ORIENTATION

PERFORATED METAL PANEL
SCREENING, PAINTED

STEEL TUBE VERTICAL "FINS"
FOR ADDITIONAL VISUAL
SCREENING AND SUPPORT

EXISTING ENTRIES TO REMAIN

METAL COLUMN WRAP

NEON WALK-UP WINDOW
SIGNAGE - REVIEWED THROUGH A
SEPARATE PERMIT PROCESS.

NEW WALK-UP WINDOW
WITH SPANDREL GLASS SILL



CITY OF MESA
DOWNTOWN MESA FACADES | 120 W MAIN ST
SCALE: N/A

ARCHITECTS & ENGINEERS, INC

AXONOMETRIC DRAWING

2024/08/29



GLHN

ARCHITECTS & ENGINEERS, INC

CITY OF MESA
DOWNTOWN MESA FACADES | 120 W MAIN ST
SCALE: NO SCALE

RENDER

2024/08/29