

Housing and Homelessness

Trends, Impacts and Programs

Katie Gentry, Regional Homelessness Program Manager
Ed Wessing, Assistant Police Chief
Lindsey Balinkie, Deputy Director Community Services

City Council Study Session
October 12, 2023

Maricopa Association of Governments

Katie Gentry, Regional Homelessness Program Manager





HOUSING DATA



OVERVIEW OF PRESENTATION

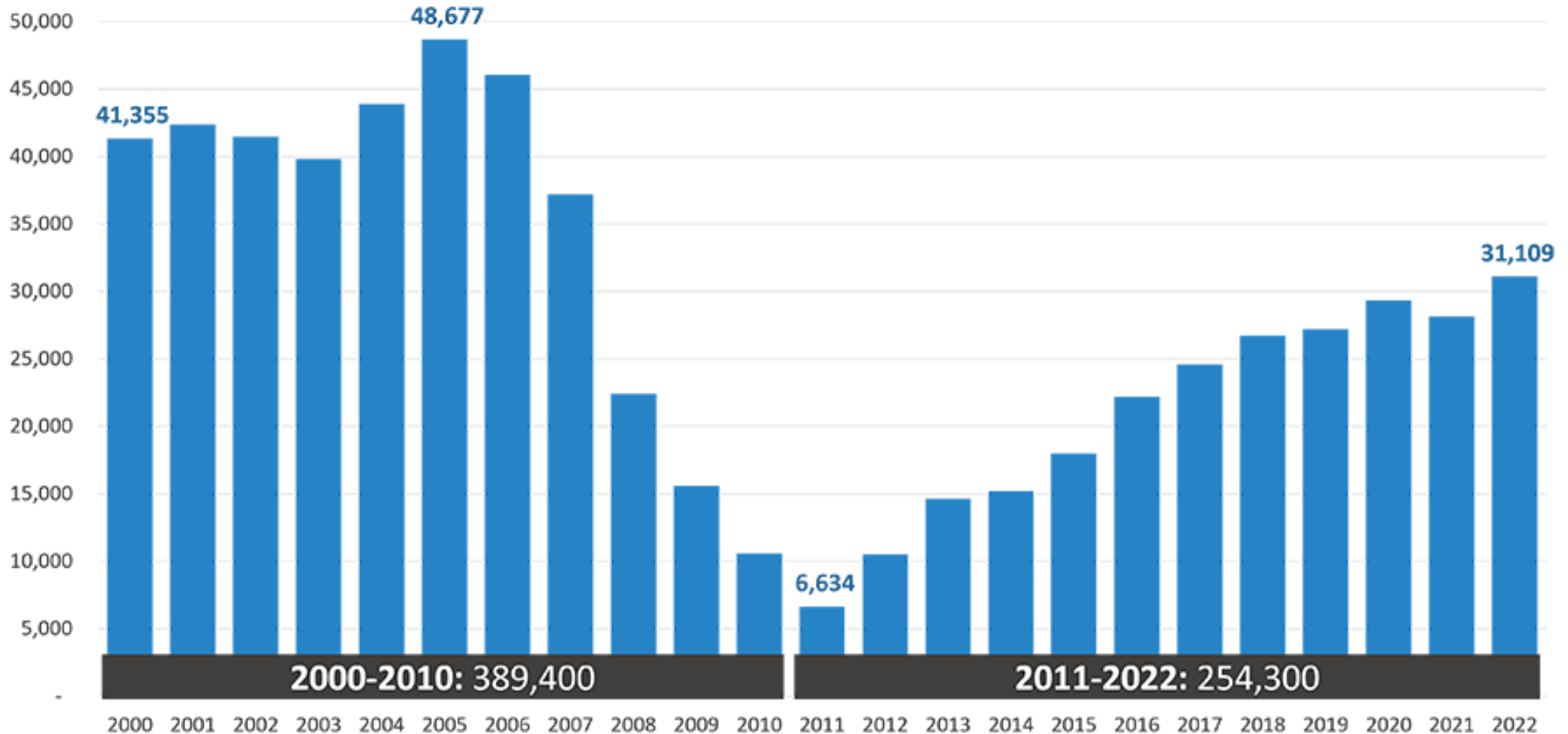
State of Housing

- Decreasing Housing Availability
- Increasing Rents
- Increasing Evictions
- Increasing Homelessness

Housing attainability and other economic or situational issues contributes to the increase in homelessness.



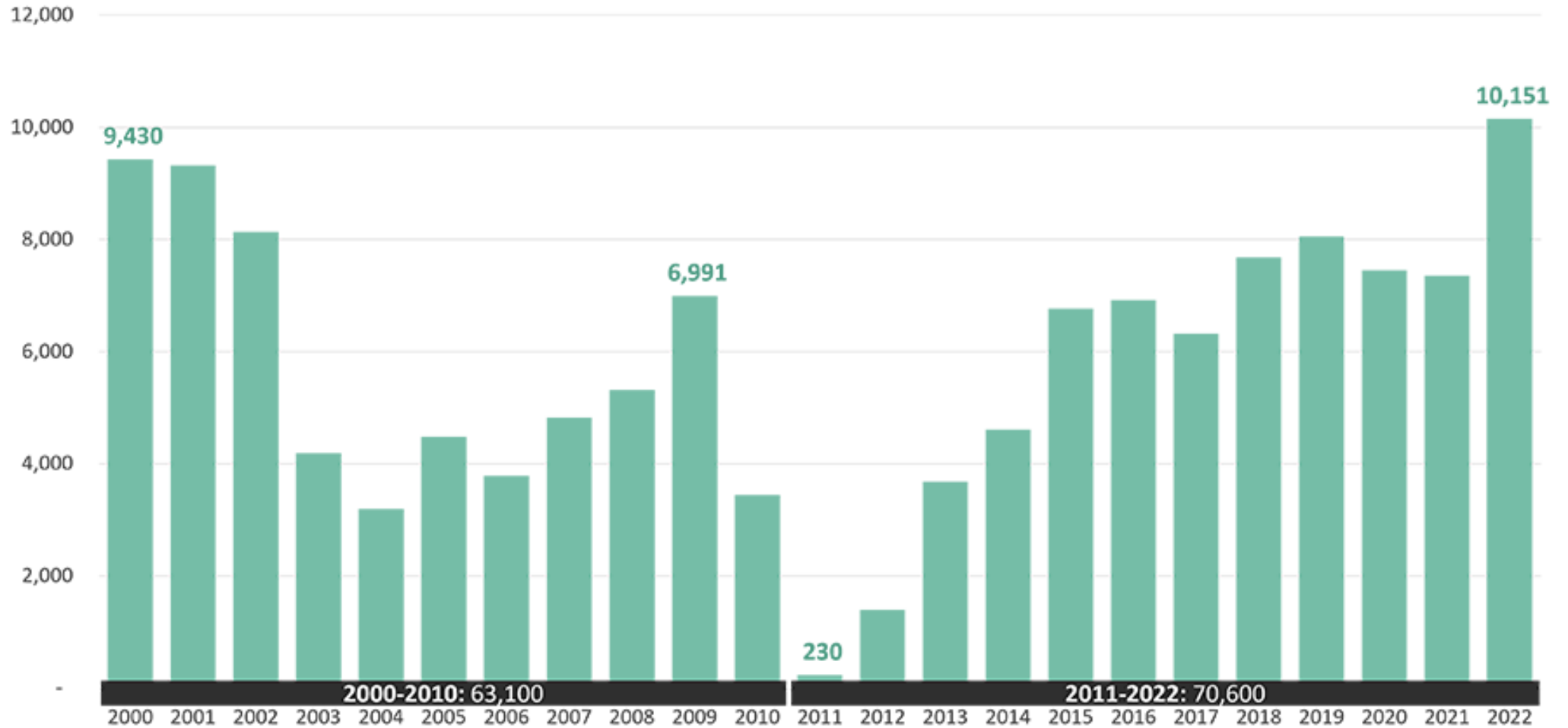
Total Residential Completions, 2000-2022 (Maricopa County)



Source: Maricopa Association of Governments

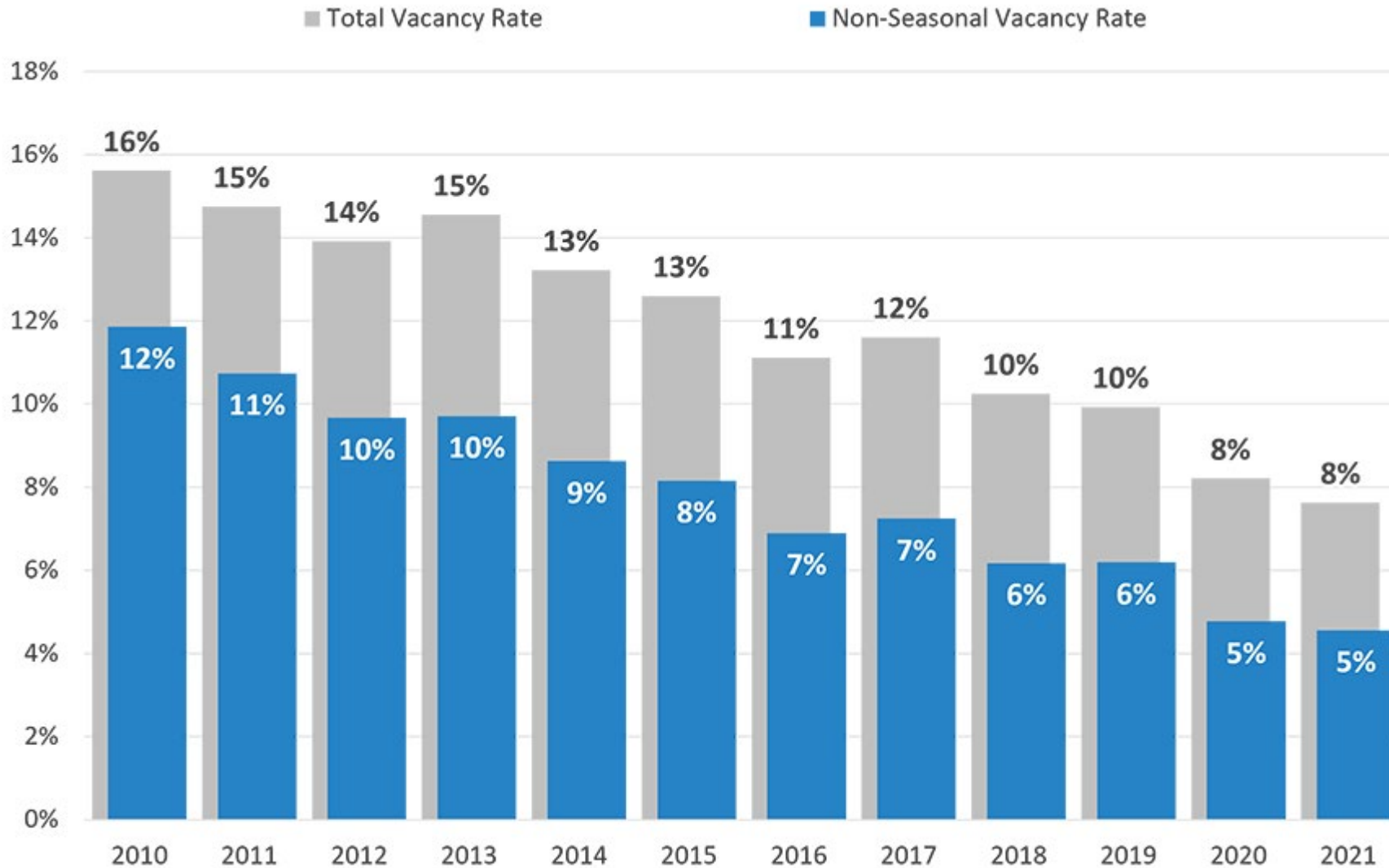


Apartment Residential Completions, 2000-2022 (Maricopa County)



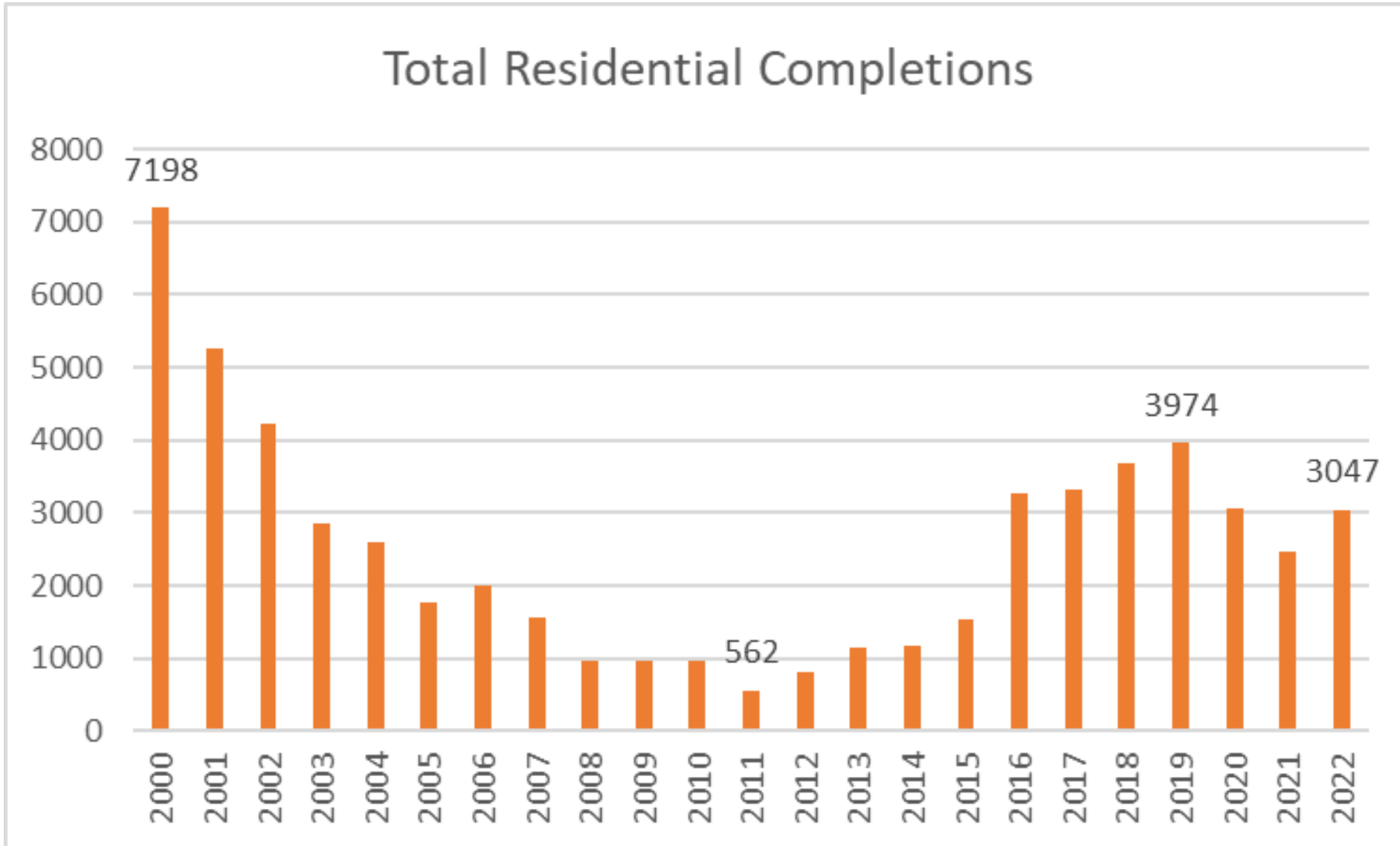
Source: Maricopa Association of Governments

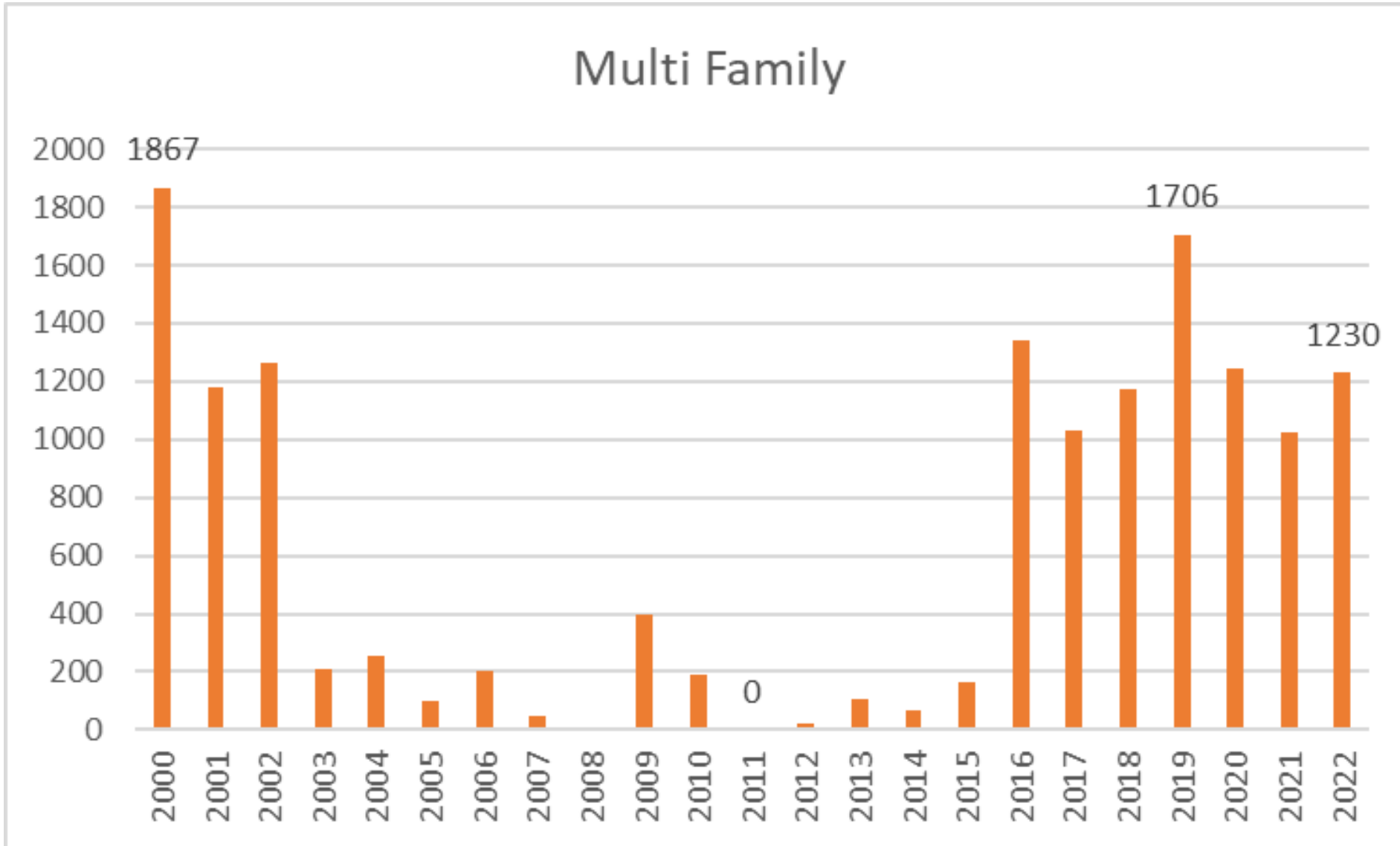




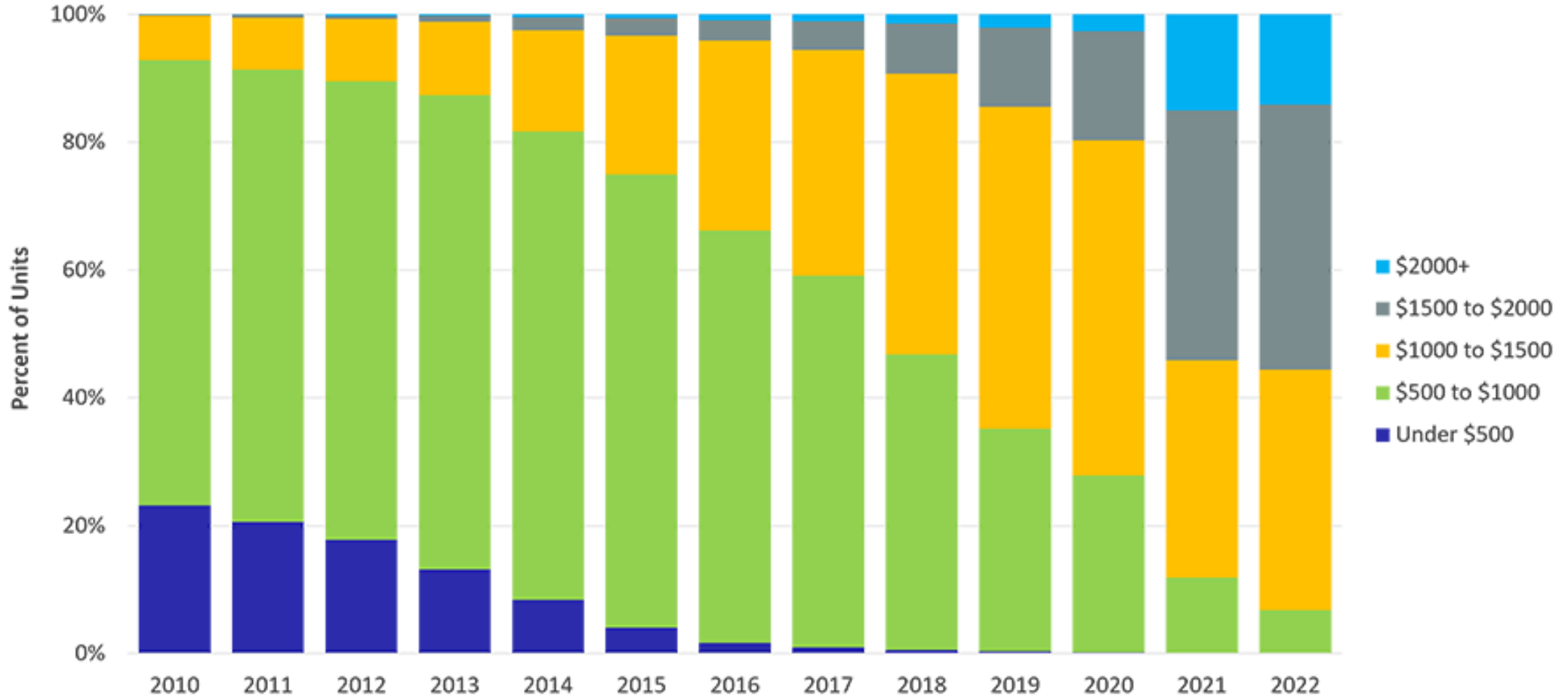
Source: U.S. Census Bureau, American Community Survey





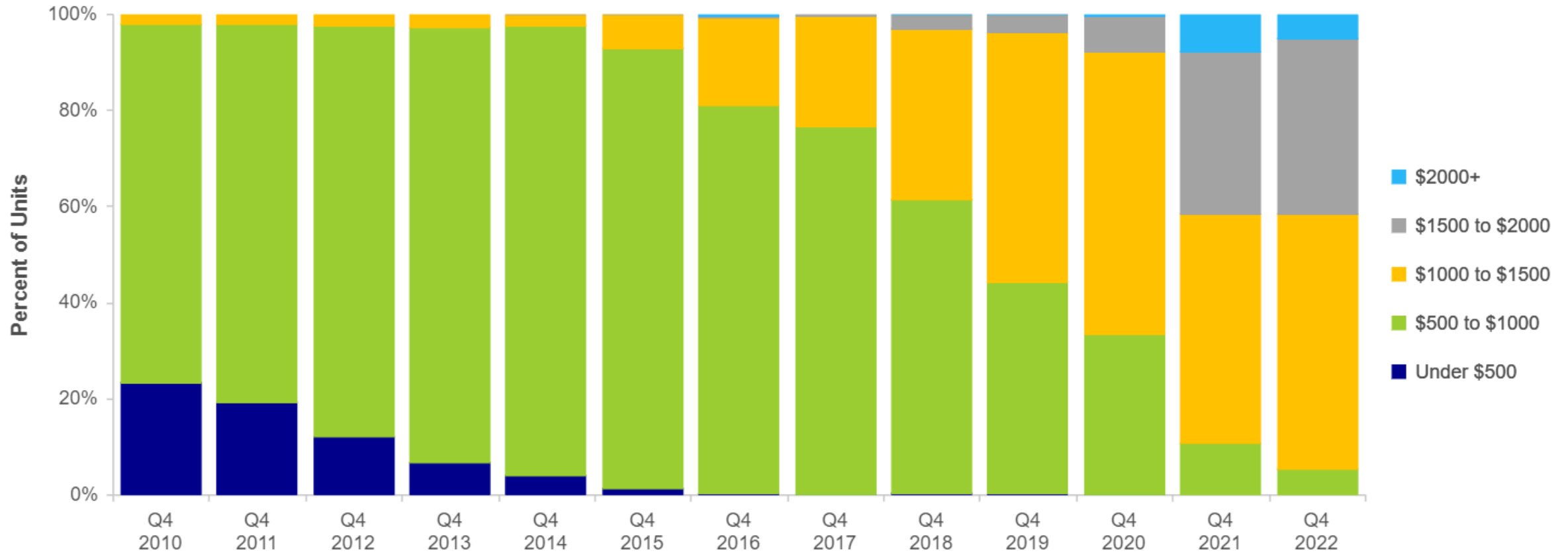


Apartment Rent, 2010-2022



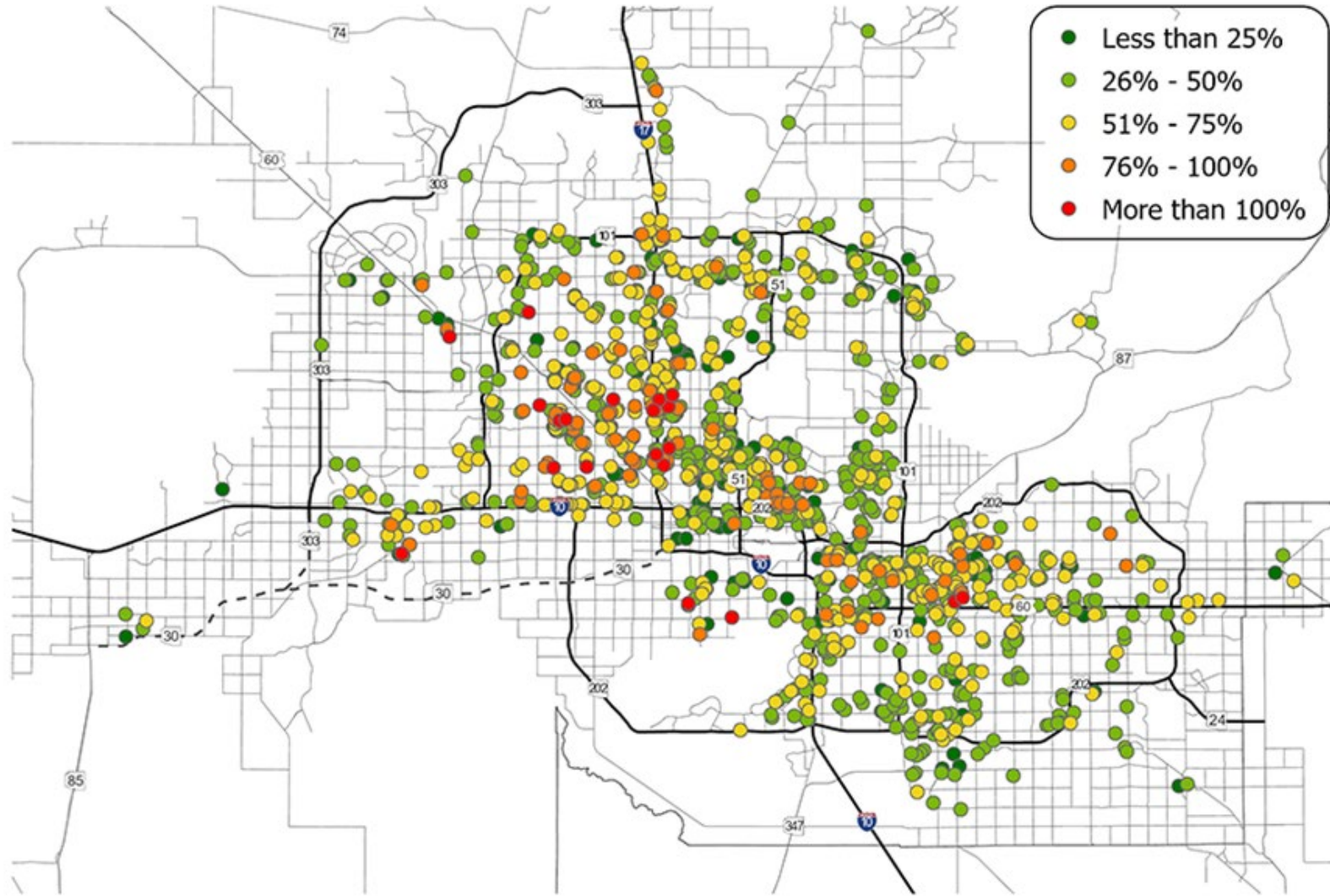
Source: RealData, Inc.





Source: RealData, Inc (50+ unit complexes only)

CHANGE IN RENT BY LOCATION



Change in Apartment Rent, Q4 2018 – Q4 2022

Source: Real Data (only includes complexes with 50 or more units)

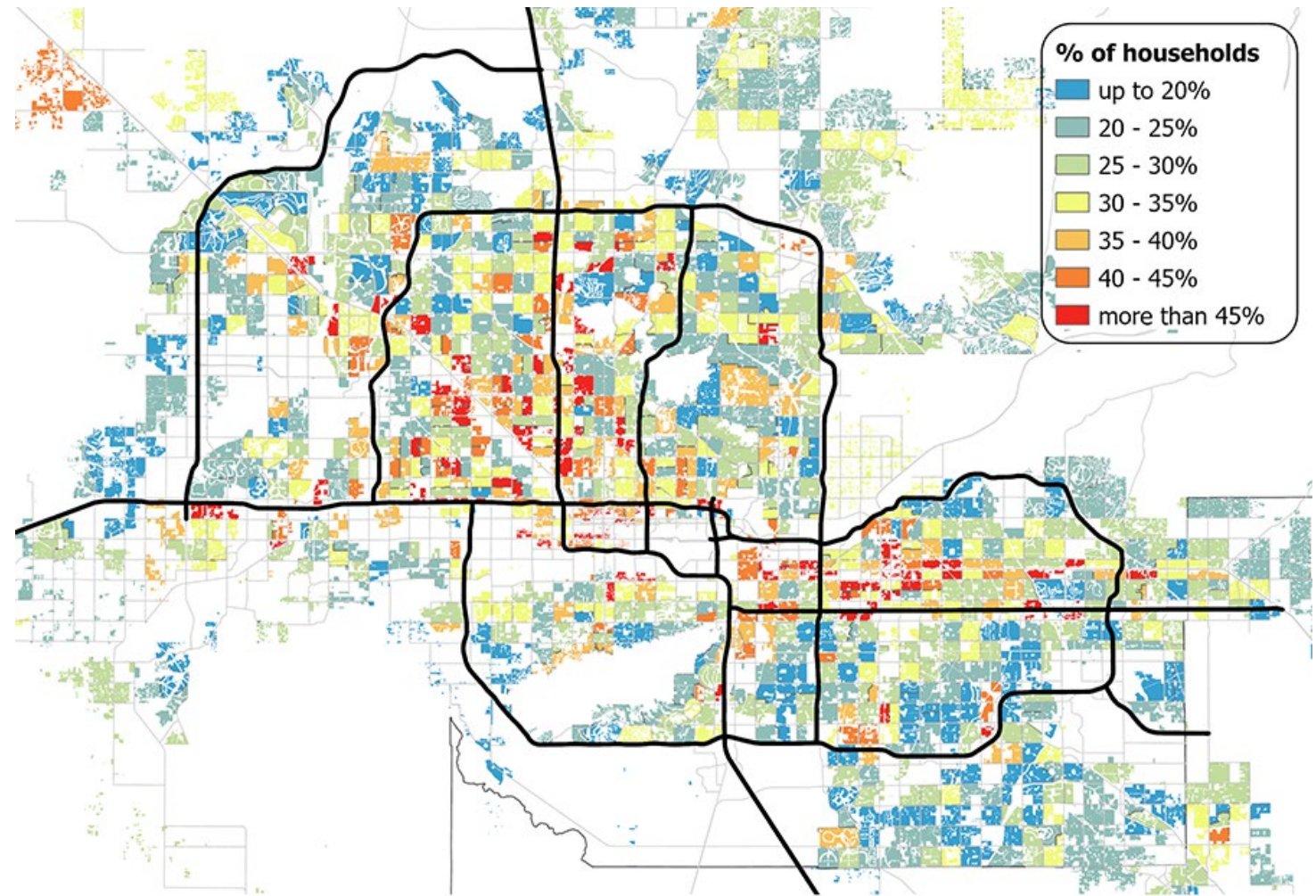
	Median Home Price	2-bedroom Rent	1-bedroom rent	Nurse	Police Officer	Firefighter	Middle School Teacher	Construction Worker	Wait Staff	Retail Worker
2020	\$308,000	\$1,200	\$1,046	\$80,609	\$73,786	\$48,298	\$47,799	\$47,034	\$34,940	\$26,843
2023	\$465,000	\$1,575	\$1,310	\$83,762	\$79,927	\$56,609	\$50,596	\$49,901	\$38,950	\$31,175

Buy
Rent 2-bedroom
Rent 1-bedroom
Neither

- *Median Income Earners priced out of buying*
- *Median Income Earners priced out of renting most one-bedroom and two-bedroom units*

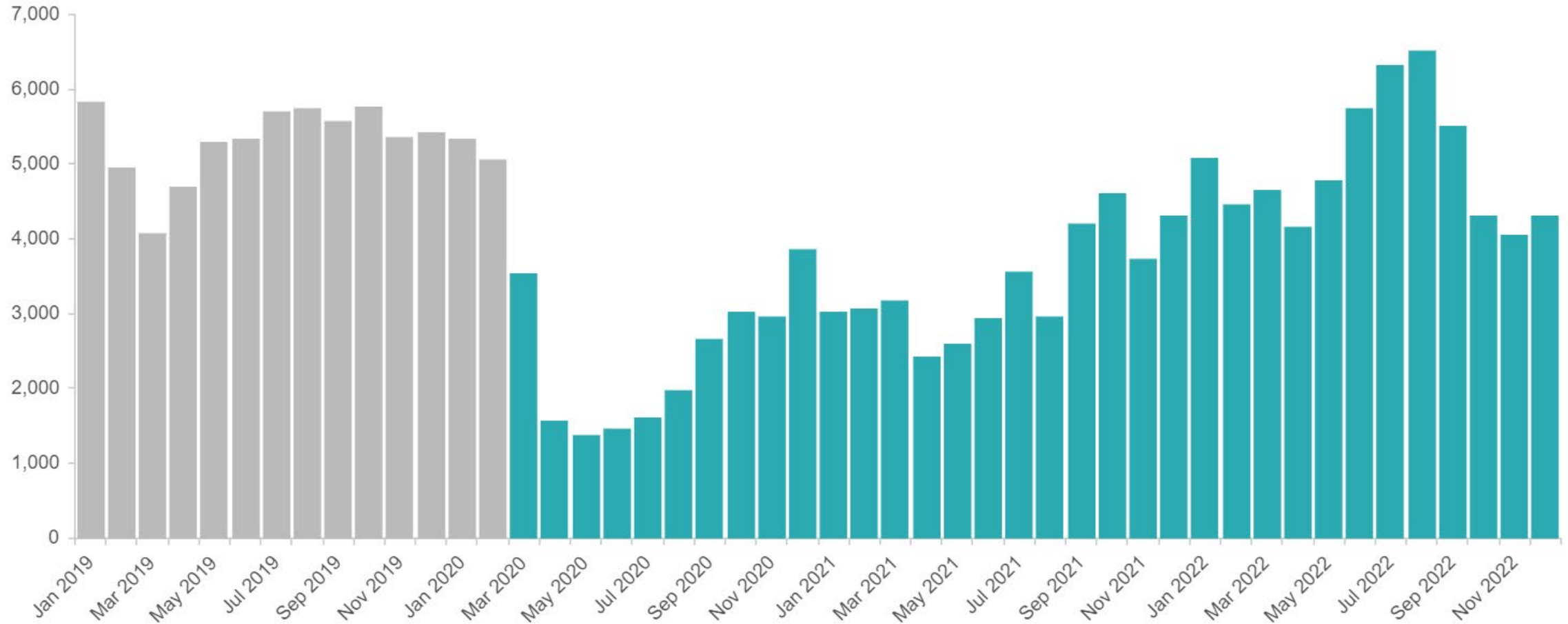
Income spent on housing

- **548,000** households spend 30% or more
- **256,000** households spend 50% or more



Source: American Community Survey (2017-2021)

January 2019 to December 2022

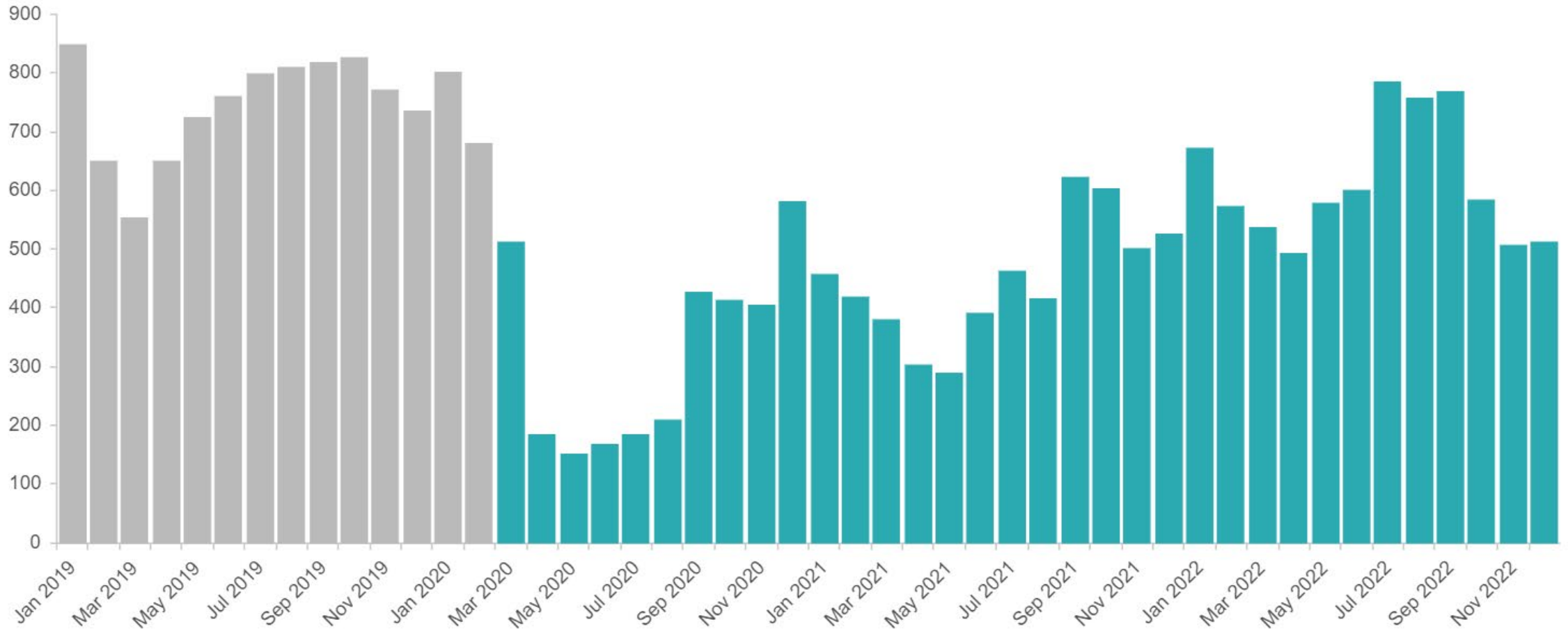


Source: Maricopa County Justice Courts*

Note: On this chart, gray represents pre-COVID numbers



January 2019 to December 2022

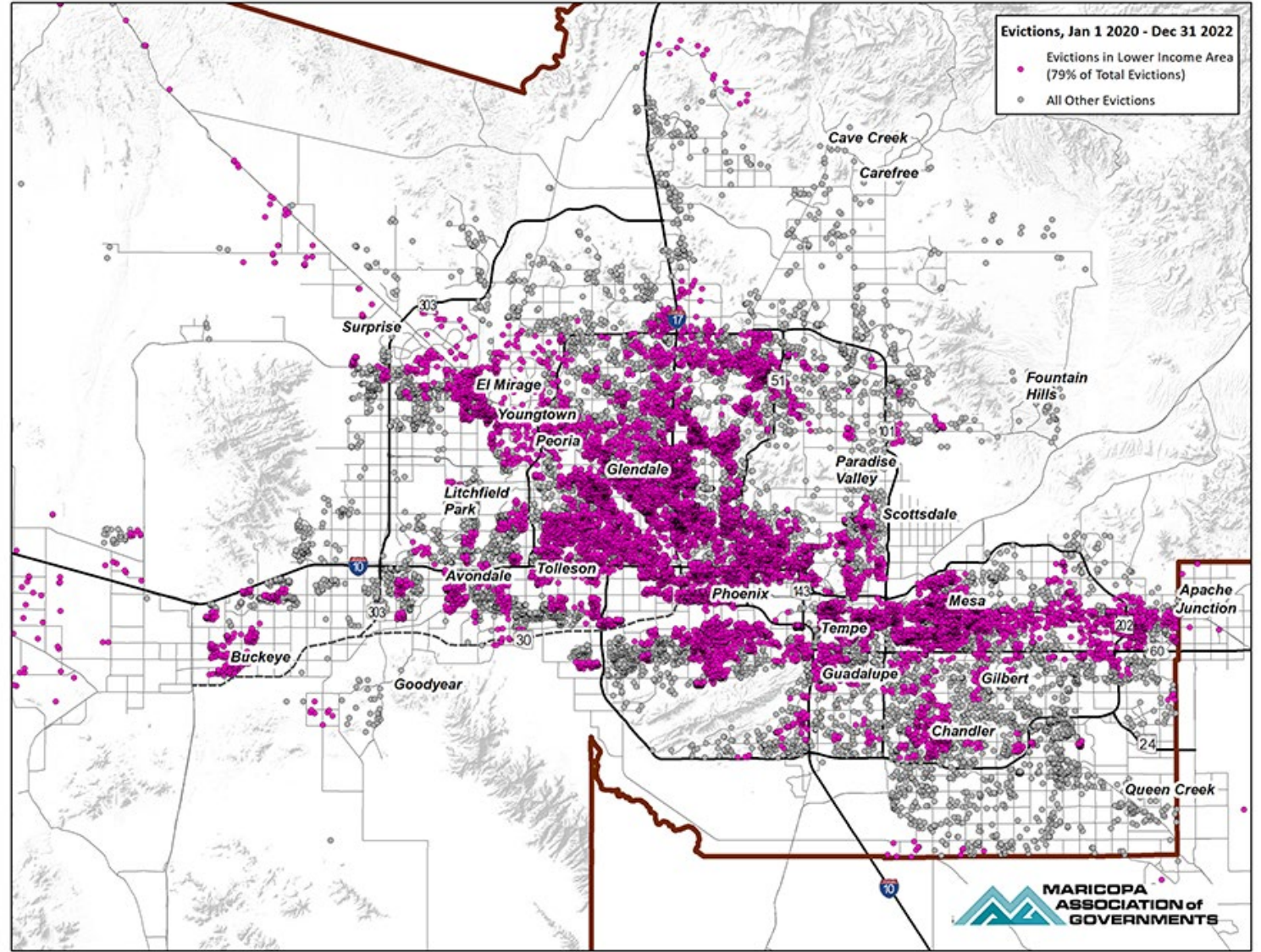


Source: Maricopa County Justice Courts*

Note: On this chart, gray represents pre-COVID numbers



79% of evictions are in lower income areas



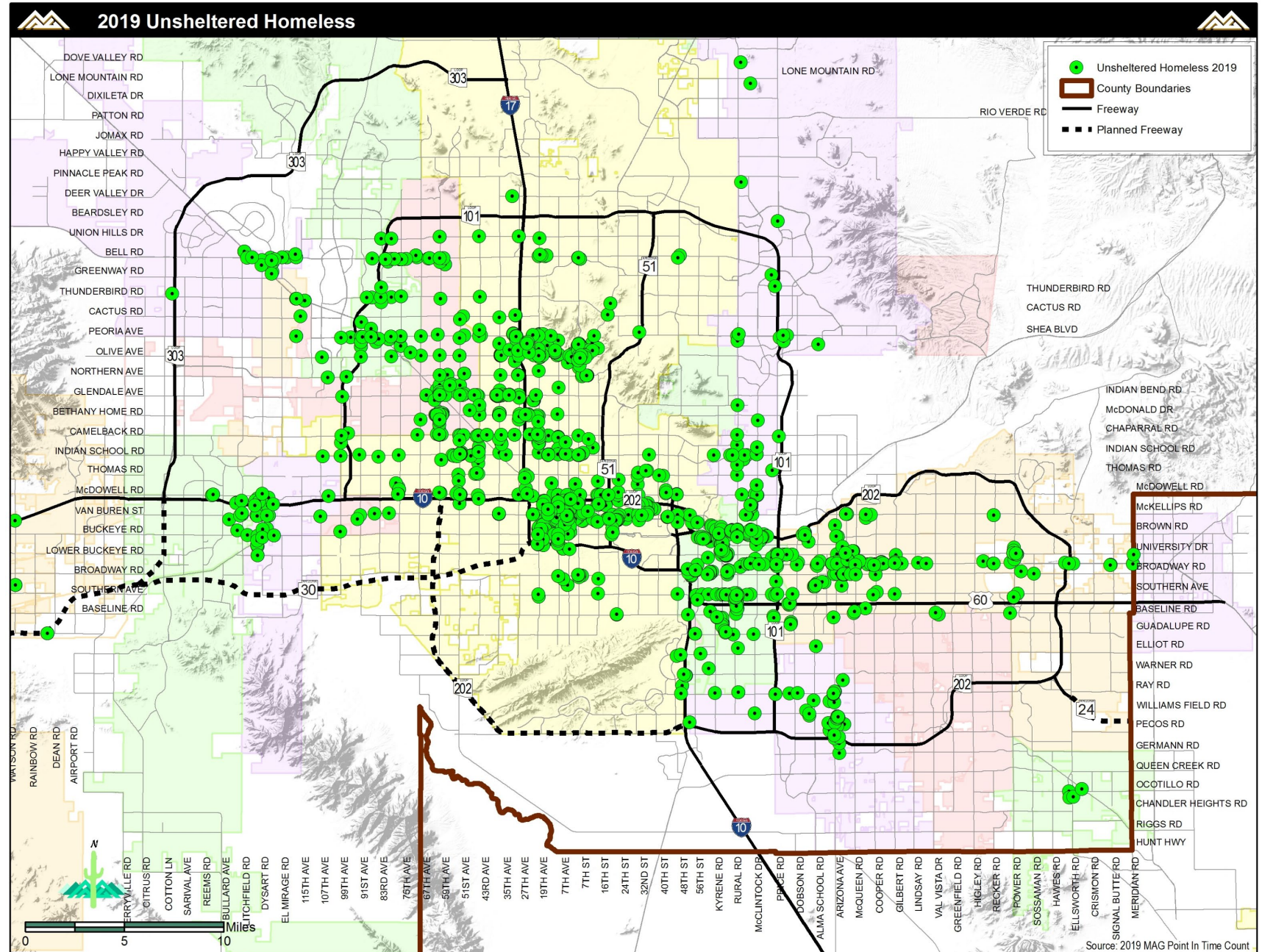
Source: Maricopa County Justice Courts; U.S. Census Bureau, American Community Survey (ACS)

HOMELESSNESS DATA



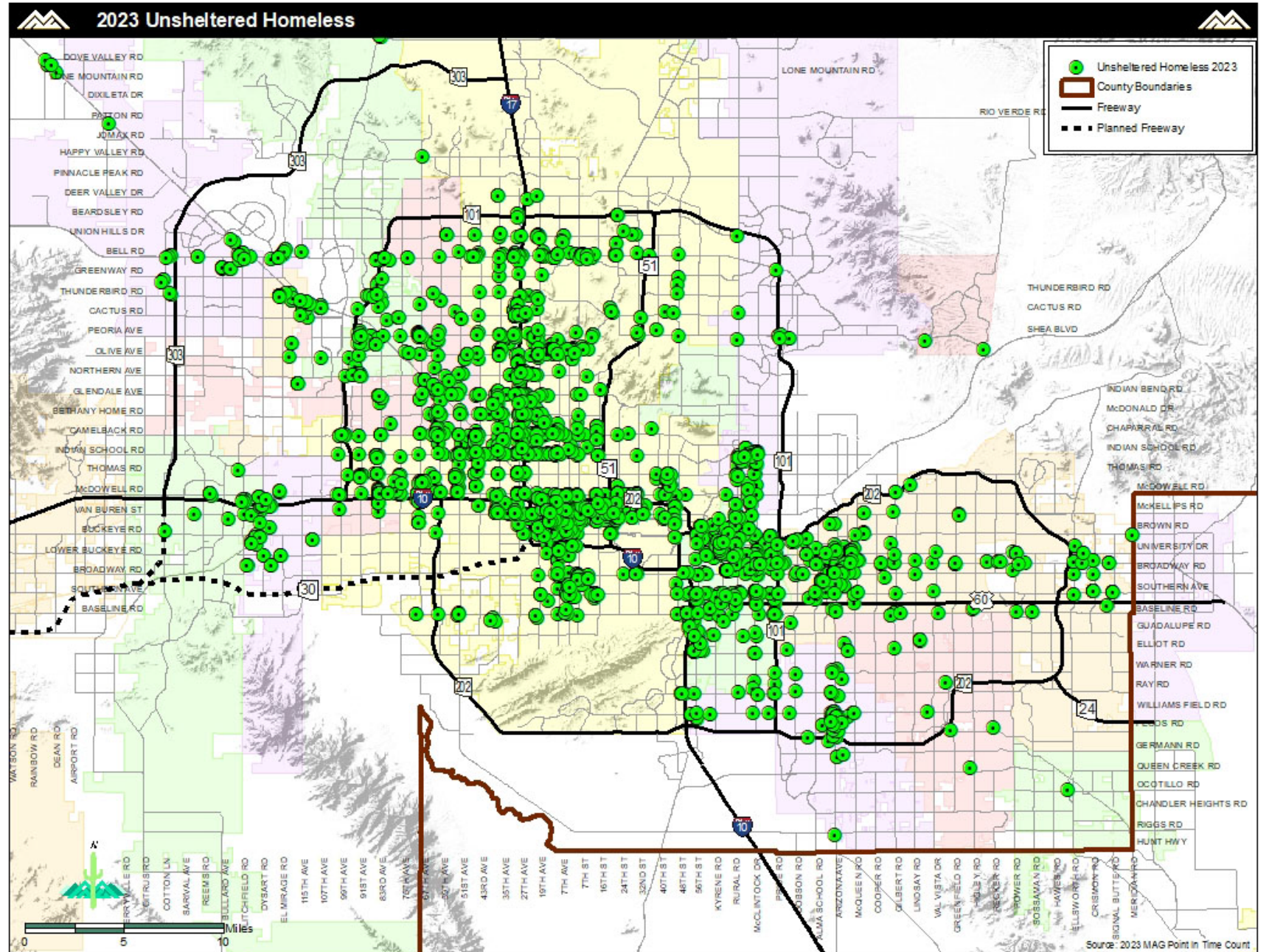
In 2019, found 3188 people sleeping outside countywide.

That number was 1,053 in 2014.



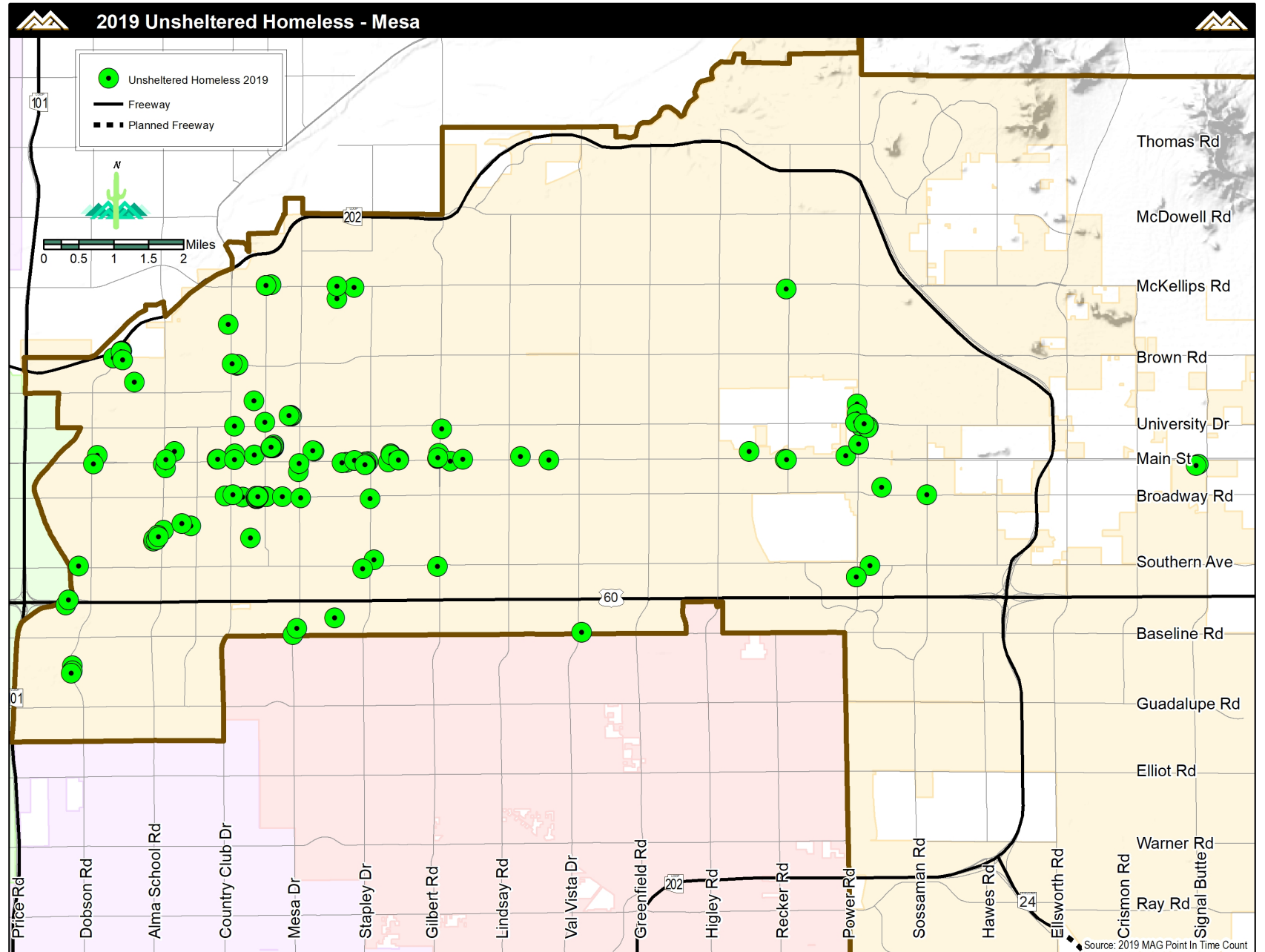
In 2023, we counted 4,908 people sleeping outside countywide.

Notable: 121 fewer people found than in 2022.



In 2019, 206 people sleeping outside.

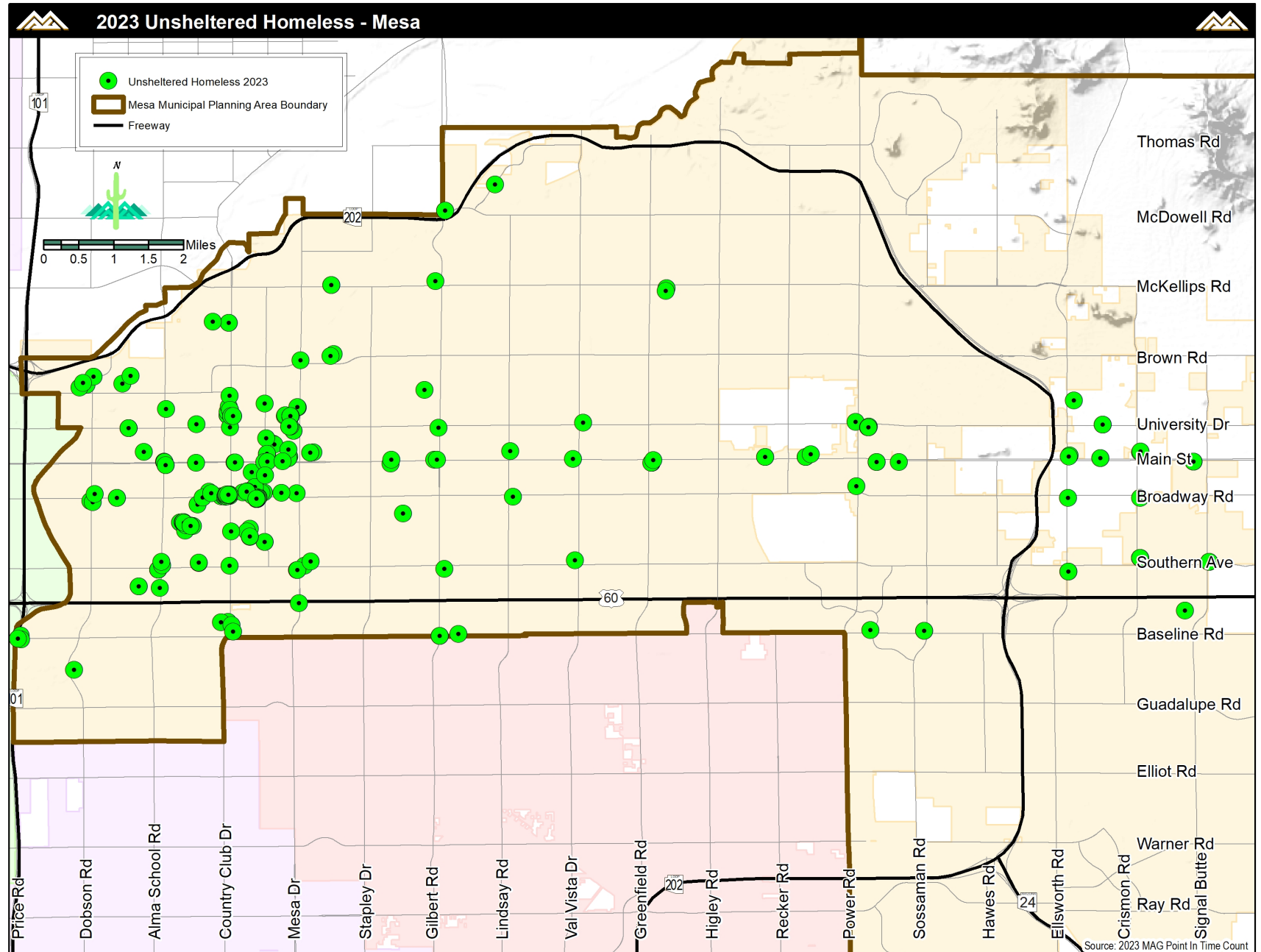
In 2014, that number was 55.



In 2023, 366 people found sleeping outside in Mesa.

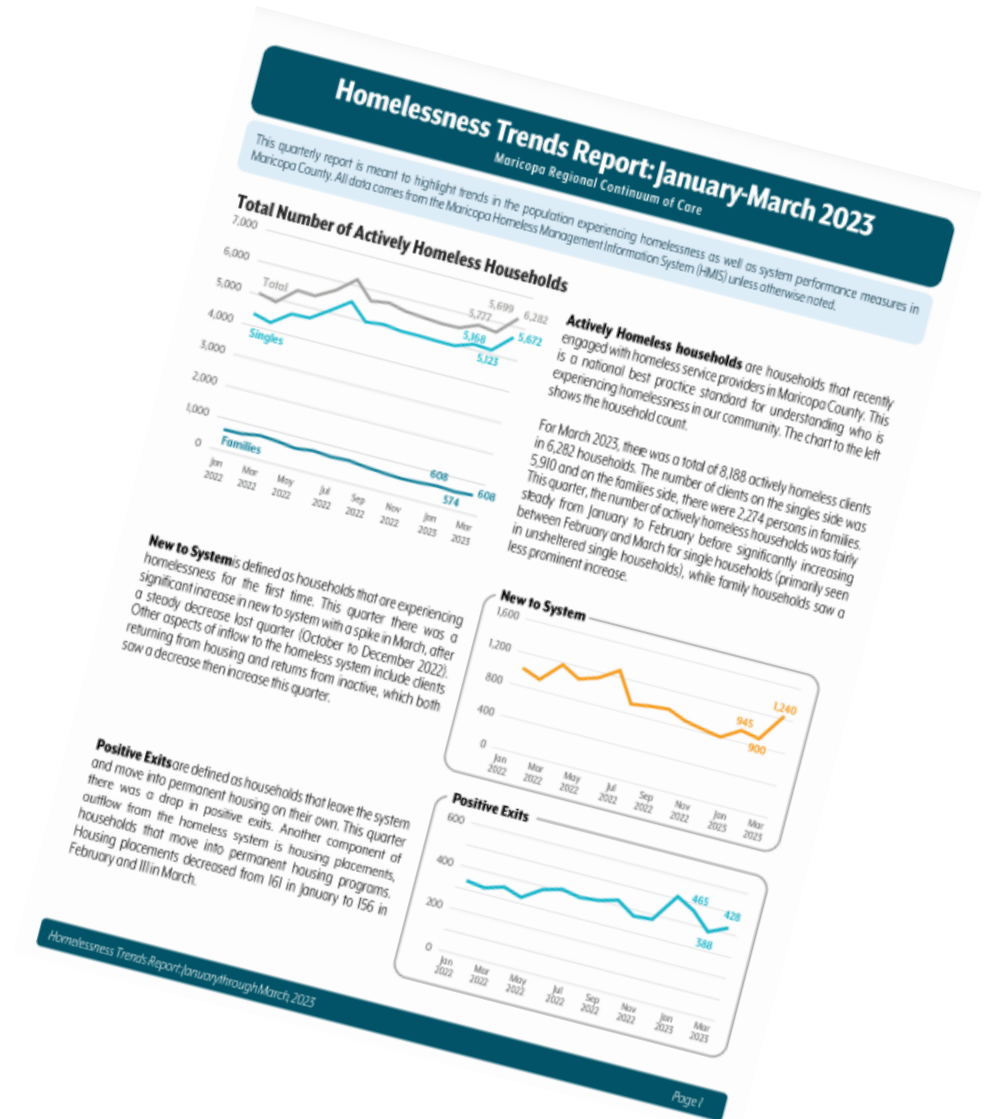
Five years prior, that number was 206.

Notable: 2023 saw a reduction of people found sleeping outside. Down from 451 in 2022.



- Quarterly Report showing trends in homelessness data
- Based on data from the Homeless Management Information System (HMIS)

<https://azmag.gov/Programs/Homelessness/Data/Homelessness-Trends>



- In June 2023 - 6,349 households experiencing homelessness made up of 8,405 people
- 34% increase in households since June 2021



- **19** people coming into homelessness for every **10** people finding housing
- On average, **970** new households coming in each month
- **28,603** unique people have been served in the past year



- **Across the region, there are not enough shelter beds compared to the need**
- **Family waitlist is currently 7 weeks long to get into shelter**
- **Since 2020, increased shelter by 44%; majority of shelter is in Phoenix**

Katie Gentry

Maricopa Association of Governments
kgentry@azmag.gov, 602-452-5092

<https://azmag.gov/Homelessness>



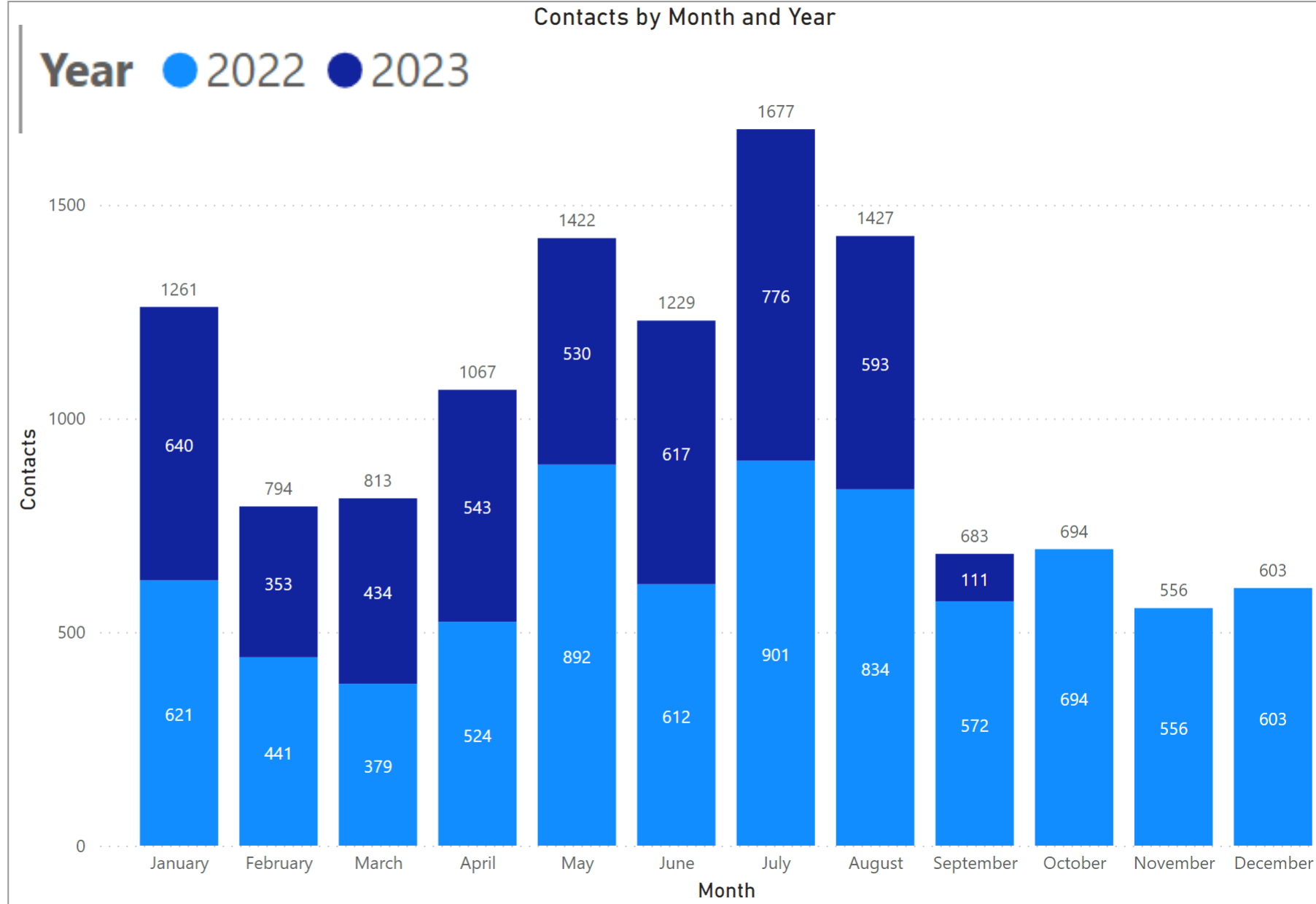
Mesa Police Department

Ed Wessing, Assistant Police Chief



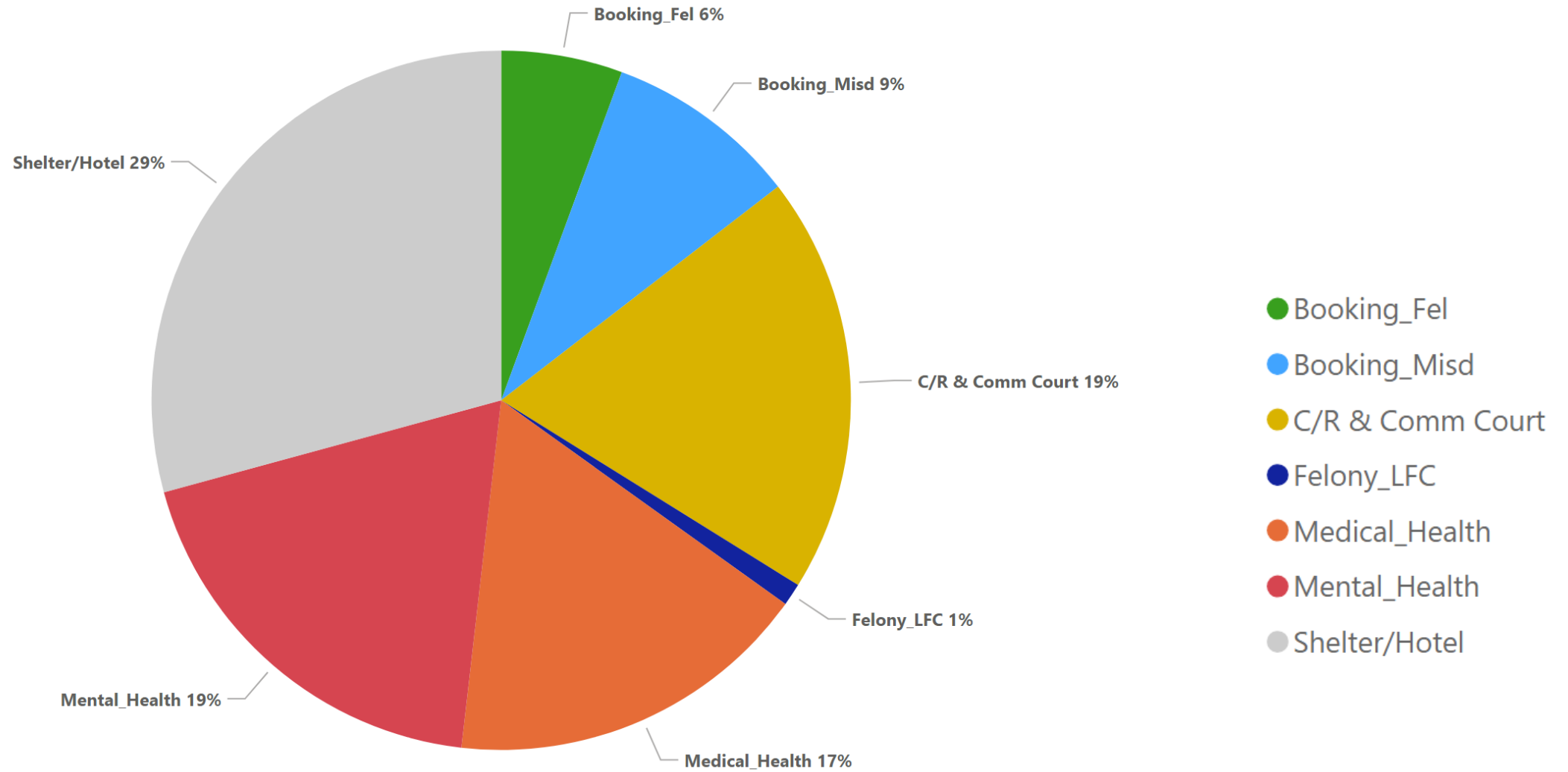
Homeless Related Project Stats

12K Total Contacts	
5581 Total Human & Judicial Services	46%
3636 Total Human Services	65%
1945 Total Judicial Services	35%



Homeless Related Project Stats

Contacts by Percentage of Total



Mesa Police Homeless Related Calls

HOMELESS RELATED COMPARED MONTHLY BY DISTRICT

DISTRICT	JAN	FEB	MAR	APRIL	MAY	JUNE	JULY	AUG	SEPT	OCT	NOV	DEC	% CHANGE
CENTRL	401	319	340	355	293	362	375	223	444				99%
FIESTA	214	205	237	201	185	191	172	118	231				96%
REDMTN	217	222	204	164	170	175	192	130	189				45%
SUPER	216	192	189	202	197	205	202	130	133				2%
TOTAL	1048	938	970	922	845	933	941	601	997	0	0	0	66%

2023 YTD HOMELESS RELATED COMPARED TO TOTAL CFS BY DISTRICT

DISTRICT	HR	OVERALL	%
CENTRL	3112	55919	6%
FIESTA	1754	47032	4%
REDMTN	1663	48813	3%
SUPER	1666	53319	3%
TOTAL	8195	205083	4%

Community Services

Office of Homeless Solutions

Lindsey Balinkie, Deputy Director Community Services

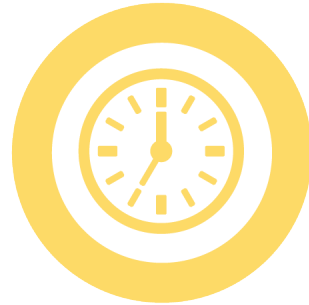
Mesa's Pathway to Housing

Since 2020



EMERGENCY

Up to 90 days.
 Immediate shelter.
 Safety. Respect.
 Stabilization.
 Housing Plan.
 Services.



STABILIZATION

Up to 120 days.
 Congregate.
 More rules and responsibilities.
 Health and employment focus.



BRIDGE TO SUCCESS

Varied number of days.
 Demonstrated success or new to homelessness.
 Bridge housing. Connect to housing vouchers and services.



RENTAL ASSISTANCE

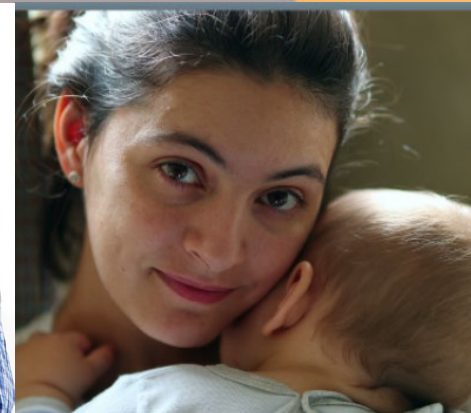
1+ years
 Step before independence.
 Rental assistance.
 Housing vouchers.



INDEPENDENCE

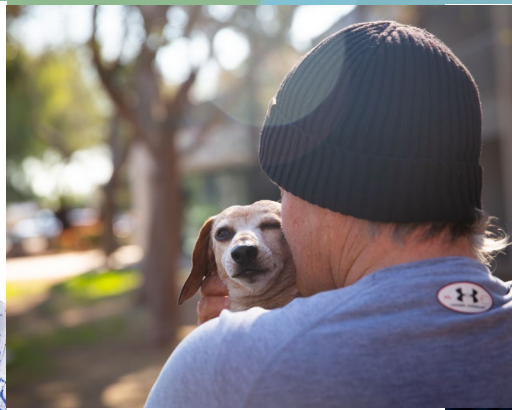
Move to complete independence.
 Affordable rental or home ownership.

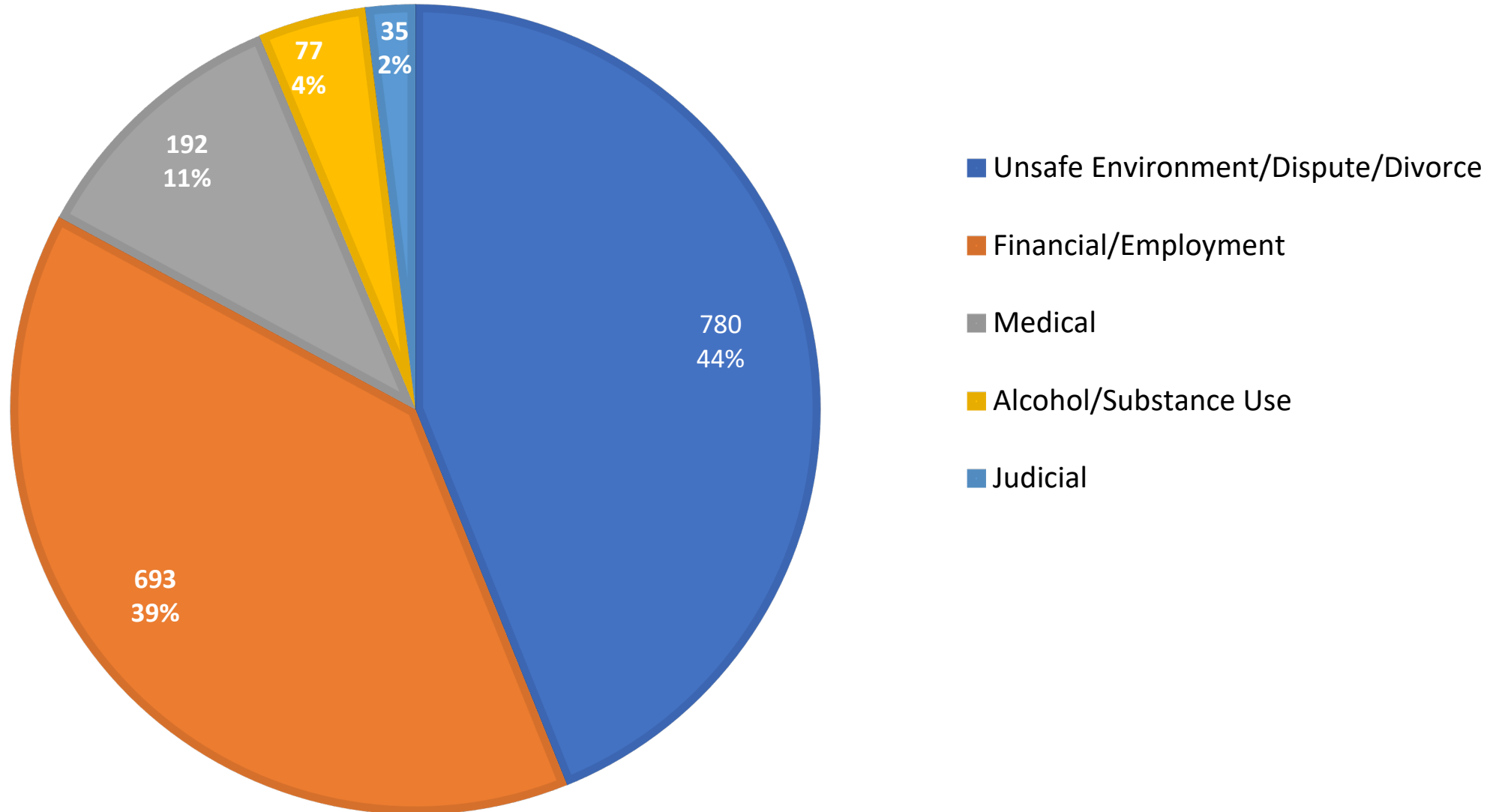
- Program has existed for 3 years in Mesa
- Temporary housing program for people experiencing homelessness
- Referrals from Mesa Police, Fire, Parks
- Allows City to enforce urban camping
- Mesa's most vulnerable individuals are served
- Closed campus
- Case management to connect to services
- Rules and requirements
- Up to 90-day stay



Who we serve

- 1,871 clients served
- 64% of clients report one or more disability, 39% have physical disabilities
- 21% are survivors of domestic violence
- 12% are aged 62+
- 49% women
- 276 families
- 19% are youth under 18
- 16% employed at time of entry
- 7% pet owners
- 73% successfully graduate





- Homeless Shelter
- Housing (with Voucher/Support)
- Housing (with family/friend)
- Self-Paid Housing
- Bridge Housing
- Medical/Long-Term Care Facility/Group Home

73% successfully graduate to the next step in their housing plan

Data from August 23 – September 28

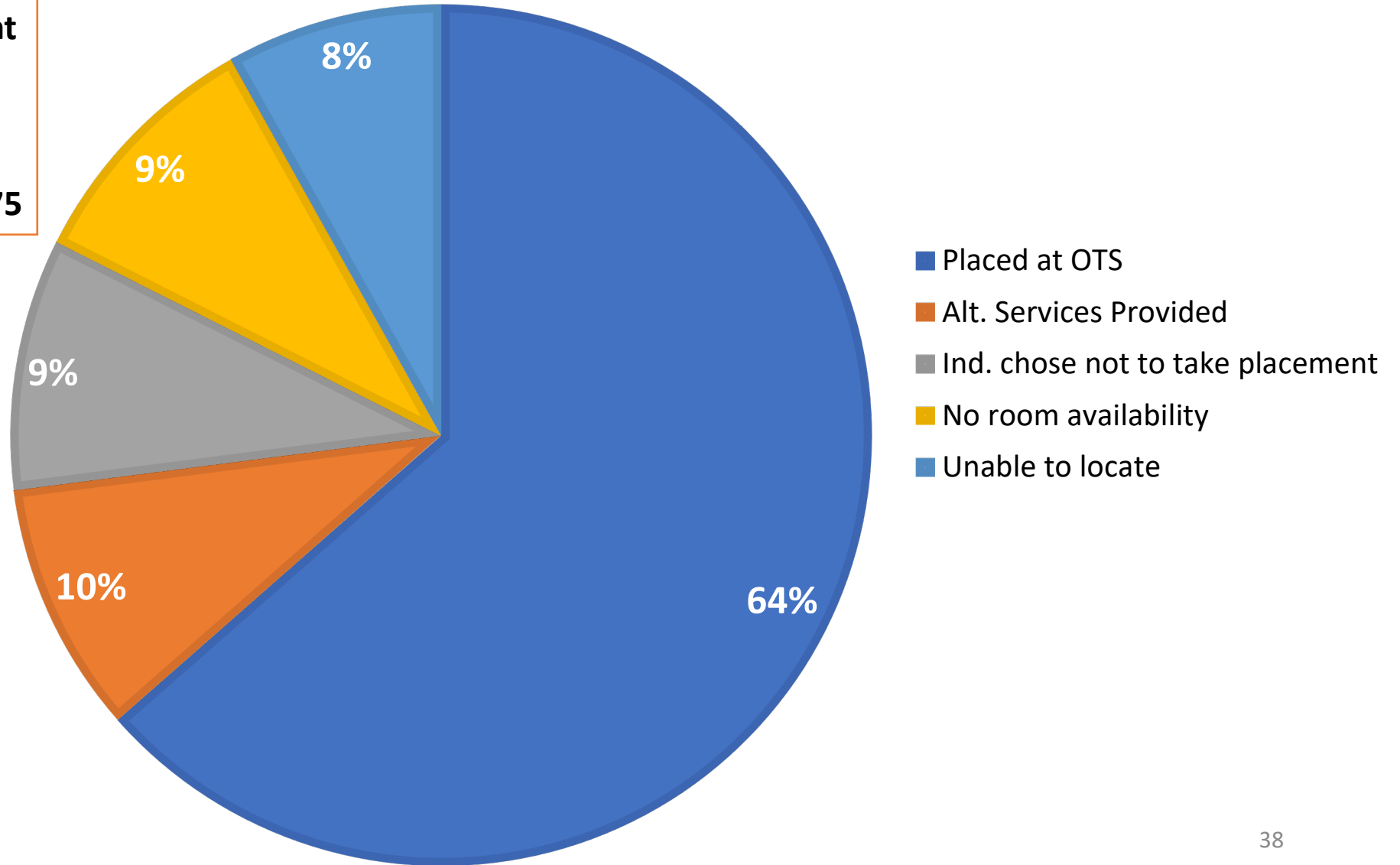
Calls for Service by Department

Park Rangers: 37

Police: 36

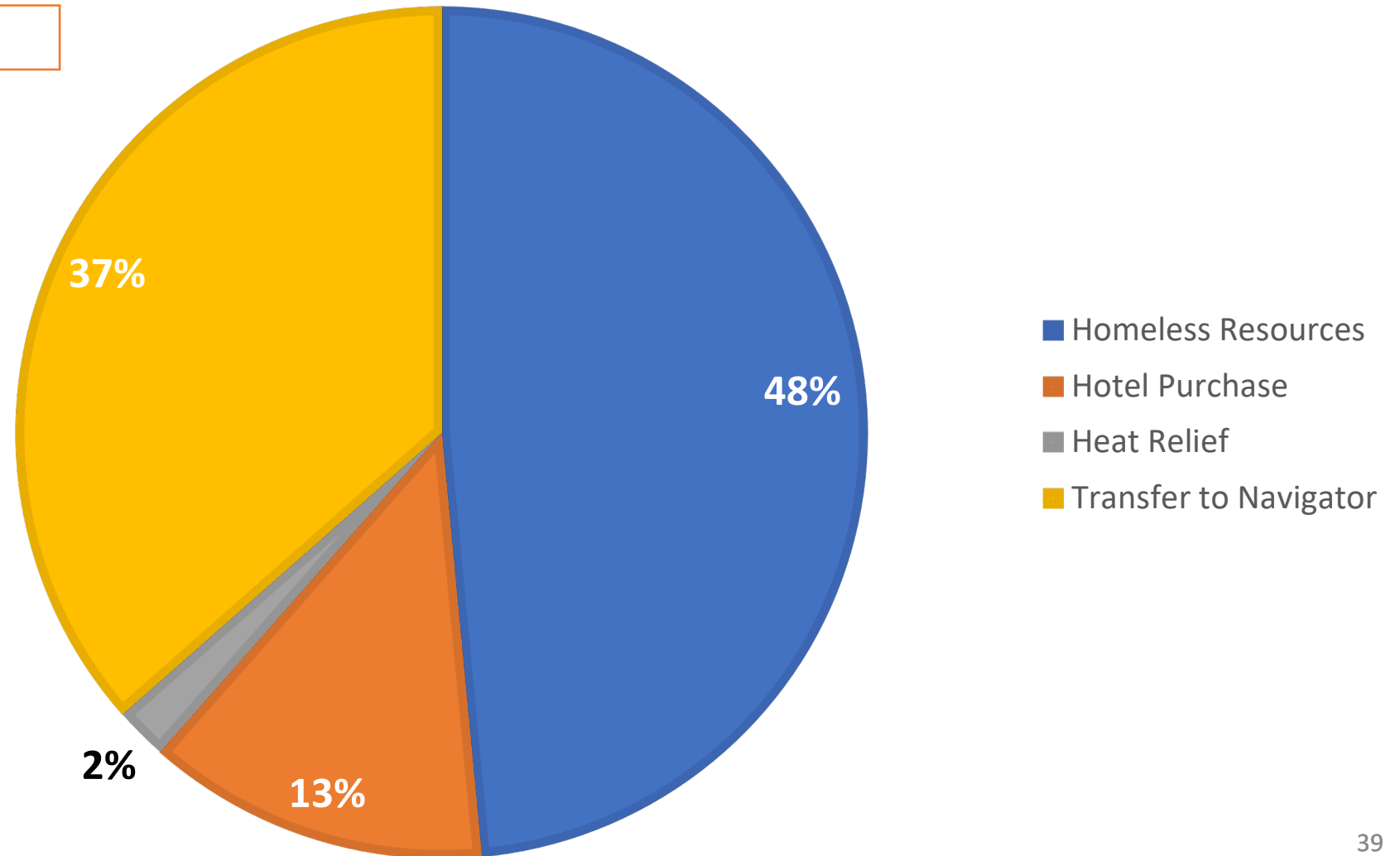
Fire: 2

Total Calls : 75



TOTAL NUMBER OF CALLS RECEIVED DATA FROM JULY 2023 – SEPTEMBER 2023

Total Calls for Service: 689



- We have a crisis in homelessness: 10 housed – 19 newly homeless.
- Pandemic exasperated evictions; resulted in more first-time homelessness and cost-burdened households.
- Economic impacts have been hard on everyone; harder on lower-income communities.
- Median income earners are priced out of renting most one-bedroom and two-bedroom units in today's market.
- Need more local and regional temporary housing strategies that respond to existing homelessness AND strategies to predict and prevent future homelessness.

Homelessness continues to increase; residents citywide want the city to help address/reduce homelessness.

Influx of federal funding and new services is helping Mesa make some progress; not enough - still need more shelter beds.

- Phoenix has more than 80% of the shelter beds in the region.

Police and Park Rangers seeing success in the field— building relationships and using human services vs. only enforcement.

Mesa still one of the most affordable cities in the region; need more attainable housing options and prevention programs and services.

Questions?



mesa·az