

PROPOSED CONSTRUCTION:
537 S. PASADENA
MESA, 85210

PREPARED FOR:
MR VAN KIRK

PREPARED BY:
DESIGN PROFILE, INC.
427 WEST 5TH STREET
MESA, ARIZONA 85201
(480) 461-8810

NOTES

A. COMPLY WITH ALL PROVISIONS AND REQUIREMENT OF MESA BUILDING CODE (MBC) CHAPTER 33- SAFEGUARDS DURING CONSTRUCTION, MESA FIRE CODE (MFC) CHAPTER 33 FIRE SAFETY DURING CONSTRUCTION AND DEMOLITION, AND NFPA 241 FOR ITEMS NOT SPECIFICALLY ADDRESSED BY MFC CHAPTER 33 FIRE APPARATUS ACCESS ROADS ARE ESSENTIAL DURING CONSTRUCTION TO ALLOW EMERGENCY RESPONSE TO THE SITE FOR BOTH FIRE AND MEDICAL EMERGENCIES. ACCESS ROADS SHALL BE IN PLACE PRIOR TO START OF VERTICAL CONSTRUCTION. IT IS IMPORTANT TO DEVELOP ACCESS ROADS AT AN EARLY STAGE OF CONSTRUCTION TO ALLOW FOR FIRE DEPARTMENT ACCESS TO THE SITE IN THE CASE OF FIRE OR INJURY.

B. REQUIRED FIRE APPARATUS ACCESS ROAD DURING CONSTRUCTION OR DEMOLITION SHALL COMPLY WITH MESA FIRE AND MEDICAL DEPARTMENT STANDARD DETAIL FPD 330.1. THE ACCESS ROAD SHALL BE A MINIMUM OF 20 FEET WIDE OF ALL-WEATHER DRIVING SURFACE, GRADED TO DRAIN STANDING WATER AND ENGINEERED TO BEAR THE IMPOSED LOADS OF FIRE APPARATUS (78,000 LBS/24,000 LBS FRONT AXLE, 54,000 LBS. REAR AXLE) WHEN ROADS ARE WET.

THE ACCESS ROAD SHALL EXTEND TO WITHIN 200 FEET OF ANY COMBUSTIBLE MATERIALS AND/OR ANY LOCATION ON THE JOBSITE WHERE ANY PERSON(S) SHALL BE WORKING FOR A MINIMUM OF 4 CONTINUOUS HOURS IN ANY DAY. A CLEARLY MARKED "FIRE DEPARTMENT ACCESS", IN RED LETTERS, SHALL BE PROVIDED AT THE ENTRY TO THE ACCESS ROAD.

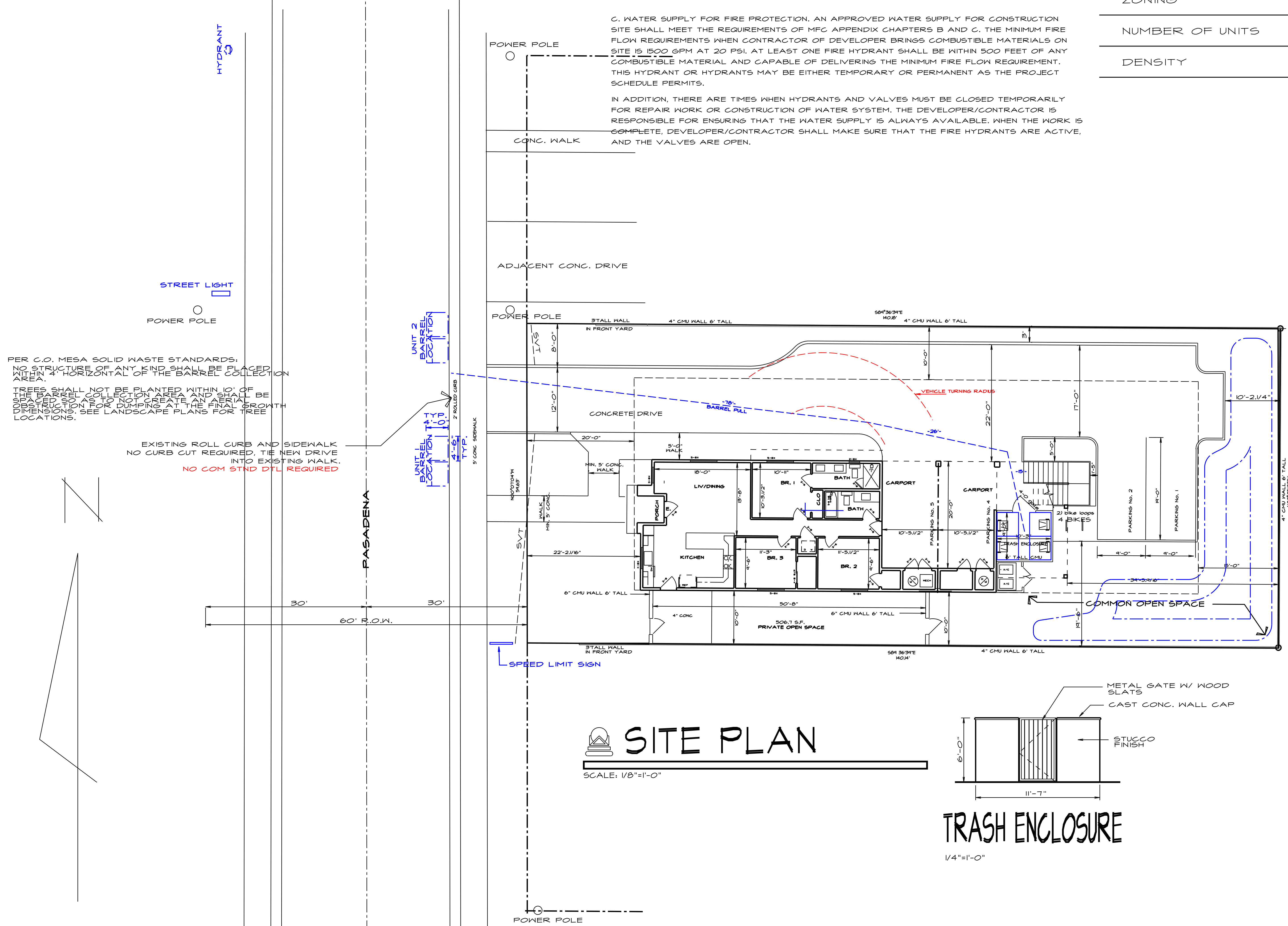
ALL OPEN TRENCHES SHALL HAVE STEEL PLATES CAPABLE OF MAINTAINING THE INTEGRITY OF THE ACCESS ROAD DESIGN WHEN THESE TRENCHES CROSS AN ACCESS ROAD.

THESE ACCESS ROADS MAY BE TEMPORARY OR PERMANENT. THIS POLICY APPLIES ONLY DURING CONSTRUCTION AND/OR DEMOLITION. PERMANENT ACCESS PER THE MFC SHALL BE IN PLACE PRIOR TO ANY FINAL INSPECTION OR CERTIFICATE OF OCCUPANCY.

C. WATER SUPPLY FOR FIRE PROTECTION. AN APPROVED WATER SUPPLY FOR CONSTRUCTION SITE SHALL MEET THE REQUIREMENTS OF MFC APPENDIX CHAPTERS B AND C. THE MINIMUM FIRE FLOW REQUIREMENTS WHEN CONTRACTOR OF DEVELOPER BRINGS COMBUSTIBLE MATERIALS ON SITE IS 1500 GPM AT 20 PSI. AT LEAST ONE FIRE HYDRANT SHALL BE WITHIN 500 FEET OF ANY COMBUSTIBLE MATERIAL AND CAPABLE OF DELIVERING THE MINIMUM FIRE FLOW REQUIREMENT. THIS HYDRANT OR HYDRANTS MAY BE EITHER TEMPORARY OR PERMANENT AS THE PROJECT SCHEDULE PERMITS.

IN ADDITION, THERE ARE TIMES WHEN HYDRANTS AND VALVES MUST BE CLOSED TEMPORARILY FOR REPAIR WORK OR CONSTRUCTION OF WATER SYSTEM. THE DEVELOPER/CONTRACTOR IS RESPONSIBLE FOR ENSURING THAT THE WATER SUPPLY IS ALWAYS AVAILABLE. WHEN THE WORK IS COMPLETE, DEVELOPER/CONTRACTOR SHALL MAKE SURE THAT THE FIRE HYDRANTS ARE ACTIVE, AND THE VALVES ARE OPEN.

TOTAL LOT S.F.	7984 S.F. (.18 ACRES)
LOT COVERAGE	5146 S.F. (64.5%)
BUILDING COVERAGE	1997 S.F. (25%)
MAIN UNIT OPEN SPACE	506.7 S.F.
UPPER UNIT OPEN SPACE	200 S.F. (ON DECK)
COMMON OPEN SPACE	987 S.F.
PARKING SPACES	5 REQUIRED - 4 PROVIDED
ZONING	RM-2
NUMBER OF UNITS	2
DENSITY	EQUAL TO 11 UNITS PER ACRE



PER C.O. MESA SOLID WASTE STANDARDS:
 NO STRUCTURE OF ANY KIND SHALL BE PLACED WITHIN 4' HORIZONTAL OF THE BARREL COLLECTION AREA.
 TREES SHALL NOT BE PLANTED WITHIN 10' OF THE BARREL COLLECTION AREA AND SHALL BE SPACED SO AS TO NOT CREATE AN AERIAL PROTECTION FOR DUMPING AT THE FINAL GROWTH DIMENSIONS. SEE LANDSCAPE PLANS FOR TREE LOCATIONS.
 EXISTING ROLL CURB AND SIDEWALK NO CURB CUT REQUIRED. THE NEW DRIVE INTO EXISTING WALK. NO CON STND DFL REQUIRED.

SITE PLAN

SCALE: 1/8"=1'-0"

TRASH ENCLOSURE

1/4"=1'-0"

WATER FIXTURE UNIT CALCULATION

TOTAL DEVELOPED LENGTH OF THE WATER LINE, FROM THE WATER METER TO THE FURTHEST WATER-USING OUTLET 135' FEET.

TYPE OF FIXTURE	HOT	COLD	COMB.	NUMBER OF FIXTURES	TOTAL FIXTURE UNITS
BDET	1.0	1.0	1.4	0	0.0
PWC TANK TYPE	1.0	2.2	2.2	0	0.0
SHOWER	1.0	1.4	1.4	0	0.0
TUB/SHWR	1.0	1.4	1.4	0	0.0
LAVATORY	0.5	0.7	0.7	1	1.4
KITCHEN SINK	1.0	1.4	1.4	0	0.0
DISHWASHER	1.4	1.4	1.4	0	0.0
REK BSK SINK	0.5	0.7	0.7	0	0.0
HOSE BIB #	-	2.5	2.5	2	5.0
URILET SINK	1.0	1.4	1.4	0	0.0
LAUNDRY SINK	1.0	1.4	1.4	0	0.0
CLOTHES WASHER	1.0	1.4	1.4	2	1.4
DVAP COOLER	-	1.4	1.4	0	0.0
ICE MAKER	-	0.5	0.5	0	0.0
FULL BATH GROUP	1.5	2.1	3.6	4	14.4
HALF BATH GROUP	0.5	2.5	2.6	0	0.0
KITCHEN GROUP	1.4	1.6	2.5	0	5.0
LAUNDRY GROUP	1.2	1.2	2.5	0	0.0
TOTAL FIXTURE UNITS = 21.2					
PIPE SIZE	UNIT VALUE				
3/4"	1 X				
1/2"	2 X				
3/4"	3 X				
1"	0 X				

WATER SUPPLY OUTLETS FOR ITEMS NOT SHOWN ABOVE SHALL BE COMPUTED AT THEIR MAXIMUM DEMAND OR ACCORDING TO THE SIZE OF THE SUPPLY PIPE AS LISTED ABOVE. (WHICHEVER IS GREATER)

*REGARDLESS OF ACTUAL NUMBER OF HOSE BIBS, ONLY A MAXIMUM OF TWO ARE COUNTED.

WATER METER SIZE: 3/4"
 SUPPLY SIZE: 1"

DRAINAGE FIXTURE UNITS = 32
 SEWER SIZE: 4"

DATE: 09/27/23
 1 REVISION
 2 REVISION
 3 REVISION
 IRC

JOB NAME: PASADENA DUPLEX
 537 S. Pasadena

DESIGN PROFILE

WEBSITE/EMAIL
 www.designprofile.com
 (480) 461-8810

ARIZONA
 427 WEST 5TH STREET
 MESA, ARIZONA 85201
 (480) 461-8810