



BUILDING TYPE 1 - FRONT ELEVATION

SURFACE AREA: 5,678 SF
PRIMARY MATERIAL - 4,081 SF (72%) STUCCO WHITE, LIGHT GRAY AND DARK GRAY
2ND PRIMARY MATERIAL - 1,597 SF (28%) FIBER CEMENT LAP SIDING



BUILDING TYPE 1 - LEFT SIDE ELEVATION

SURFACE AREA: 2,540 SF
PRIMARY MATERIAL - 1,880 SF (74%) STUCCO WHITE, LIGHT GRAY AND DARK GRAY
2ND PRIMARY MATERIAL - 660 SF (26%) FIBER CEMENT LAP SIDING



BUILDING TYPE 1 - RIGHT SIDE ELEVATION

SURFACE AREA: 2,540 SF
PRIMARY MATERIAL - 1,880 SF (74%) STUCCO WHITE, LIGHT GRAY AND DARK GRAY
2ND PRIMARY MATERIAL - 660 SF (26%) FIBER CEMENT LAP SIDING



BUILDING TYPE 1 - REAR ELEVATION

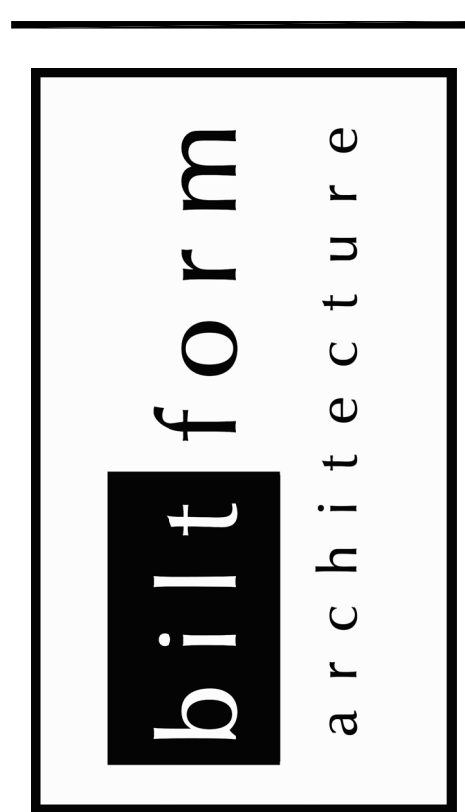
SURFACE AREA: 5,680 SF
PRIMARY MATERIAL - 4,230 SF (74%) STUCCO WHITE, LIGHT GRAY AND DARK GRAY
2ND PRIMARY MATERIAL - 1,450 SF (26%) FIBER CEMENT LAP SIDING

- ELEVATION KEY NOTES:** (#)
1. PARAPET CAP WITH STUCCO SAND FINISH
 2. EXTERIOR STUCCO FINISH SYSTEM - SAND FINISH
 3. FAUX WOOD PLANK VENEER
 4. FOAM HEADER PROFILE
 5. FOAM WINDOW SURROUND WITH STUCCO SAND FINISH
 6. LINE OF ROOF DECK
 7. VERTICAL FOAM PROFILE WITH STUCCO SAND FINISH
 8. FRAME COLUMN WITH STUCCO FINISH
 9. METAL RAILING
 10. STONE VENEER
 11. HORIZONTAL FOAM BANDING WITH STUCCO SAND FINISH
 12. GARAGE DOOR PER PLAN
 13. WOOD FRAMED PATIO WALL
 14. VINYL WINDOW PER PLAN. INSTALL PER FLASHING AND WATERPROOF DETAILS
 15. STUCCO CONTROL JOINT
 16. DOOR
 17. STAIRS
 18. BALCONY RAILING
 19. STOREFRONT DOOR/WINDOW
 20. LIGHT FIXTURE LOCATION
 21. BBQ STATION WITH STUCCO SAND FINISH
 22. DECORATIVE MASONRY
 23. STEEL GATE AT TRASH ENCLOSURE
 24. LOCATIONS OF MECHANICAL EQUIPMENT
 25. FIBER CEMENT WINDOW TRIM.

- GENERAL NOTES:**
- A. SEE SITE PLAN FOR FIRE RISER AND METER PACK LOCATIONS PER BUILDING
 - B. FOR ADDITIONAL PATIO WALL LAYOUTS AND INFORMATION SEE LANDSCAPE PLANS, SITE PLAN & DETAILS.
 - C. SEE SECTIONS FOR ADDITIONAL HEIGHT INFO.
 - D. WINDOW HEADER HEIGHTS TO BE AT 8'-0" A.F.F. TYP. - U.N.O. UNLESS NOTED OTHERWISE
 - E. HORIZONTAL CONTROL JOINTS AT FINISH FLOOR LINE AND VERTICAL CONTROL JOINTS AT OPENINGS - TYP. AT ALL EXTERIOR ELEVATIONS
 - F. PROVIDE WEEP MECHANISM AT ALL STUCCO TRANSITIONS FROM VERTICAL TO HORIZONTAL WALL CONDITIONS
 - G. ROOF-MOUNTED EQUIPMENT SCREENING IS CONSTRUCTED AS AN ENCOMPASSING MONOLITHIC UNIT. THE HEIGHT OF THE SCREENING ELEMENT EQUALS OR EXCEEDS THE HEIGHT OF THE STRUCTURE'S TALLEST PIECE OF INSTALLED EQUIPMENT.
 - H. GROUND-MOUNTED EQUIPMENT FACING A STREET OR NOT OTHERWISE SEPARATED FROM THE STREET BY INTERVENING BUILDING(S) IS SCREENED TO A HEIGHT OF AT LEAST 12 INCHES ABOVE THE EQUIPMENT. SCREENING DEVICES CONSIST OF DECORATIVE WALLS WITH SUPPLEMENTAL PLANT MATERIALS INCLUDING TREES, SHRUBS AND GROUNDCOVERS. FOR SCREEN WALLS THAT ARE 3 FEET IN HEIGHT OR LOWER, VEGETATIVE MATERIALS ARE SUBSTITUTED FOR 50 PERCENT OF THE SCREENING DEVICE.
 - I. WALL-MOUNTED EQUIPMENT, INCLUDING BUT NOT LIMITED TO ELECTRICAL METERS, ELECTRICAL DISTRIBUTION CABINETS, SERVICE ENTRY SECTION (SES), FIRE SPRINKLER EQUIPMENT AND SIMILAR VALVES AND CABINETS THAT FACE A STREET, OR PUBLIC PARKING AND ARE NOT RECESSED AND/OR SEPARATED FROM THE STREET BY INTERVENING BUILDING(S) ARE SCREENED, INCORPORATING ELEMENTS OF THE BUILDING DESIGN, E.G. SHAPE, COLOR, TEXTURE AND MATERIAL. VEGETATIVE MATERIALS ARE SUBSTITUTED FOR UP TO 50 PERCENT OF THE SCREENING DEVICES WHEN USED IN CONJUNCTION WITH SCREEN WALLS THAT ARE 3 FEET IN HEIGHT OR LOWER.

EXTERIOR COLOR SCHEME:			
1	STUCCO COLOR 1	DUNN EDWARDS DET648 WHITE PICKET FENCE	
2	STUCCO COLOR 2	SHERWIN WILLIAMS SW7017 DORIAN GRAY	
3	STUCCO COLOR 3	SHERWIN WILLIAMS SW7019 GAUNTLET GRAY	
4	NOT USED		
5	WINDOWS AND PATIO DOOR FRAMES	WHITE	
6	STOREFRONTS AND EXTERIOR DOORS	BRONZE	
7	FAUX WOOD PLANK VENEER	WOODSTONE PRE-FINISHED FIBER CEMENT LAP SIDING WARM ESPRESSO	
8	NOT USED		
9	METAL RAILINGS / GATES / CARPORTS	DUNN EDWARDS DE6357 BLACK TIE	
10	GARAGE DOOR METAL PANEL	SHERWIN WILLIAMS SW7019 GAUNTLET GRAY	
11	GARAGE DOOR METAL PANEL	DUNN EDWARDS DET648 WHITE PICKET FENCE	

* SEE COLOR AND MATERIALS BOARD



biltform architecture
group, LLC.
11460 north cave creek road . suite 11
phoenix . arizona 85020
Phone 602.285.9200 Fax 602.285.9229

PRELIMINARY
NOT FOR
CONSTRUCTION

ASCEND at LONGBOW HIGHPOINT
MIXED USE PROJECT
CITY OF MESA, ARIZONA

Phone: (817) 390-9264

D.R. HORTON
America's Builder

1341 Horton Circle
Arlington, Texas 76001

REVISIONS:	
1	
2	
3	
4	

REZONE SUBMITTAL

JOB NO: 21-031
DATE: SEPTEMBER 7, 2021
SCALE: 1/8" = 1'-0"
SHEET NO:

A5.5C-MF
BLDG TYPE 01 - 26 PLEX

© BILTFORM ARCHITECTURE GROUP, INC.



SURFACE AREA: 2,685 SF
PRIMARY MATERIAL - 1,991 SF (74%) STUCCO WHITE, LIGHT GRAY AND DARK GRAY
2ND PRIMARY MATERIAL - 694 SF (26%) FIBER CEMENT LAP SIDING



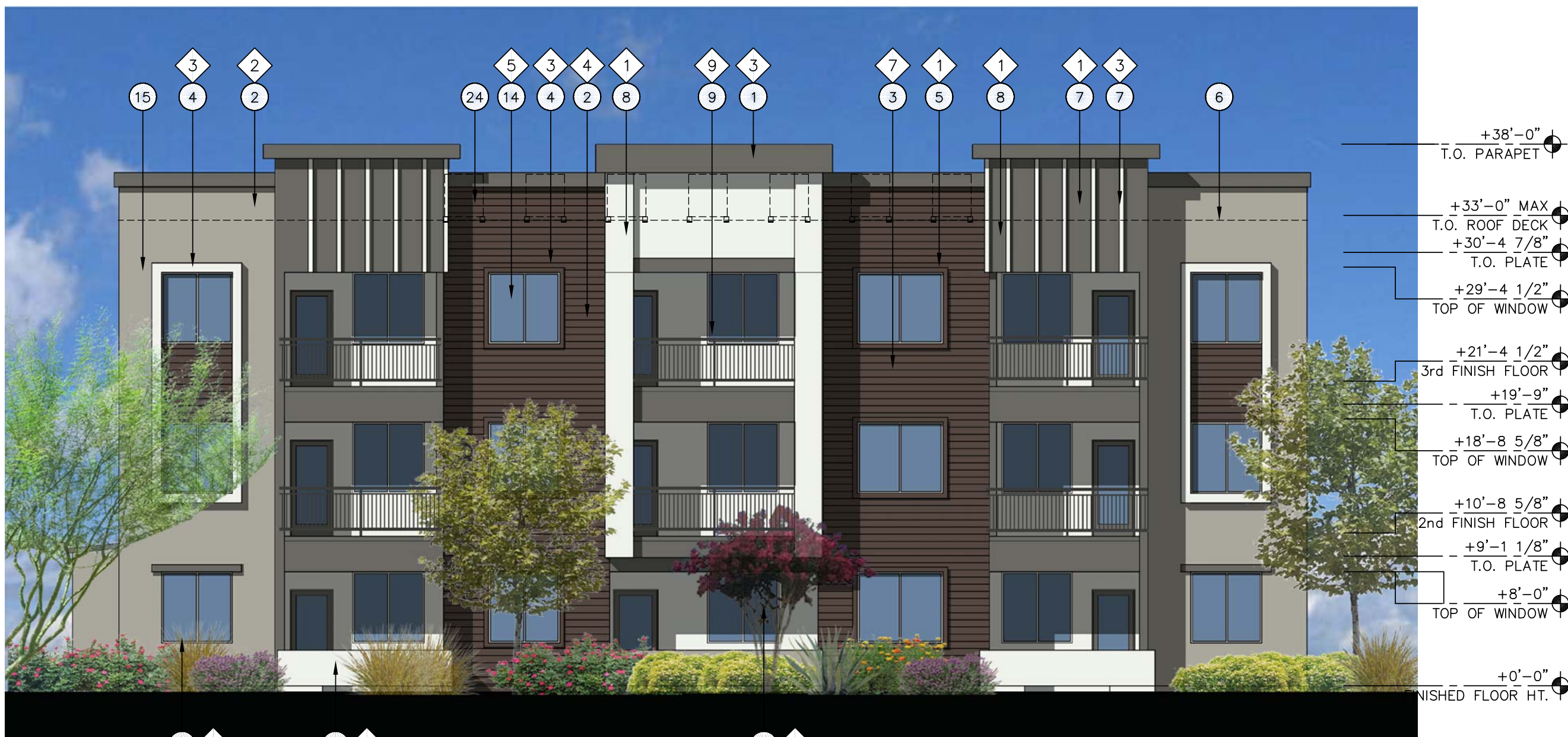
BUILDING TYPE 2 - LEFT SIDE ELEVATION

SURFACE AREA: 2,420 SF
PRIMARY MATERIAL - 1,760 SF (73%) STUCCO WHITE, LIGHT GRAY AND DARK GRAY
2ND PRIMARY MATERIAL - 660 SF (27%) FIBER CEMENT LAP SIDING



BUILDING TYPE 2 - RIGHT SIDE ELEVATION

SURFACE AREA: 2,420 SF
PRIMARY MATERIAL - 1,760 SF (73%) STUCCO WHITE, LIGHT GRAY AND DARK GRAY
2ND PRIMARY MATERIAL - 660 SF (27%) FIBER CEMENT LAP SIDING



BUILDING TYPE 2 - REAR ELEVATION

SURFACE AREA: 2,550 SF
PRIMARY MATERIAL - 1,859 SF (73%) STUCCO WHITE, LIGHT GRAY AND DARK GRAY
2ND PRIMARY MATERIAL - 692 SF (27%) FIBER CEMENT LAP SIDING

ELEVATION KEY NOTES: (#)
1. PARAPET CAP WITH STUCCO SAND FINISH
2. EXTERIOR STUCCO FINISH SYSTEM - SAND FINISH
3. FAUX WOOD PLANK VENEER
4. FOAM HEADER PROFILE
5. FOAM WINDOW SURROUND WITH STUCCO SAND FINISH
6. LINE OF ROOF DECK
7. VERTICAL FOAM PROFILE WITH STUCCO SAND FINISH
8. FRAME COLUMN WITH STUCCO FINISH
9. METAL RAILING
10. STONE VENEER
11. HORIZONTAL FOAM BANDING WITH STUCCO SAND FINISH
12. GARAGE DOOR PER PLAN.
13. WOOD FRAMED PATIO WALL
14. VINYL WINDOW PER PLAN. INSTALL PER FLASHING AND WATERPROOF DETAILS
15. STUCCO CONTROL JOINT
16. DOOR
17. STAIRS
18. BALCONY RAILING
19. STOREFRONT DOOR/WINDOW
20. LIGHT FIXTURE LOCATION
21. BBO STATION WITH STUCCO SAND FINISH
22. DECORATIVE MASONRY
23. STEEL GATE AT TRASH ENCLOSURE
24. LOCATIONS OF MECHANICAL EQUIPMENT
25. FIBER CEMENT WINDOW TRIM.

GENERAL NOTES:
A. SEE SITE PLAN FOR FIRE RISER AND METER PACK LOCATIONS PER BUILDING
B. FOR ADDITIONAL PATIO WALL LAYOUTS AND INFORMATION SEE LANDSCAPE PLANS, SITE PLAN & DETAILS.
C. SEE SECTIONS FOR ADDITIONAL HEIGHT INFO.
D. WNDOW HEADER HEIGHTS TO BE AT 8'-0" A.F.F. TYP. - U.N.O. UNLESS NOTED OTHERWISE
E. HORIZONTAL CONTROL JOINTS AT FINISH FLOOR LINE AND VERTICAL CONTROL JOINTS AT OPENINGS - TYP. AT ALL EXTERIOR ELEVATIONS
F. PROVIDE WEEP MECHANISM AT ALL STUCCO TRANSITIONS FROM VERTICAL TO HORIZONTAL WALL CONDITIONS
G. ROOF-MOUNTED EQUIPMENT SCREENING IS CONSTRUCTED AS AN ENCOMPASSING MONOLITHIC UNIT. THE HEIGHT OF THE SCREENING ELEMENT EQUALS OR EXCEEDS THE HEIGHT OF THE STRUCTURE'S TALLEST PIECE OF INSTALLED EQUIPMENT.
H. GROUND-MOUNTED EQUIPMENT FACING A STREET OR NOT OTHERWISE SEPARATED FROM THE STREET BY INTERVENING BUILDING(S) IS SCREENED TO A HEIGHT OF AT LEAST 12 INCHES ABOVE THE EQUIPMENT. SCREENING DEVICES CONSIST OF DECORATIVE WALLS WITH SUPPLEMENTAL PLANT MATERIALS INCLUDING TREES, SHRUBS AND GROUNDCOVERS. FOR SCREEN WALLS THAT ARE 3 FEET IN HEIGHT OR LOWER, VEGETATIVE MATERIALS ARE SUBSTITUTED FOR 50 PERCENT OF THE SCREENING DEVICE.
I. WALL-MOUNTED EQUIPMENT, INCLUDING BUT NOT LIMITED TO ELECTRICAL METERS, ELECTRICAL DISTRIBUTION CABINETS, SERVICE ENTRY SECTION (SES), FIRE SPRINKLER EQUIPMENT AND SIMILAR VALVES AND CABINETS THAT FACE A STREET, OR PUBLIC PARKING AND ARE NOT RECESSED AND/OR SEPARATED FROM THE STREET BY INTERVENING BUILDING(S) ARE SCREENED, INCORPORATING ELEMENTS OF THE BUILDING DESIGN, E.G. SHAPE, COLOR, TEXTURE AND MATERIAL. VEGETATIVE MATERIALS ARE SUBSTITUTED FOR UP TO 50 PERCENT OF THE SCREENING DEVICES WHEN USED IN CONJUNCTION WITH SCREEN WALLS THAT ARE 3 FEET IN HEIGHT OR LOWER.

EXTERIOR COLOR SCHEME:		
1	STUCCO COLOR 1	DUNN EDWARDS DET648 WHITE PICKET FENCE
2	STUCCO COLOR 2	SHERWIN WILLIAMS SW7017 DORIAN GRAY
3	STUCCO COLOR 3	SHERWIN WILLIAMS SW7019 GAUNTLET GRAY
4	NOT USED	
5	WINDOWS AND PATIO DOOR FRAMES	WHITE
6	STOREFRONTS AND EXTERIOR DOORS	BRONZE
7	FAUX WOOD PLANK VENEER	WOODSTONE. PRE-FINISHED FIBER CEMENT LAP SIDING WARM ESPRESSO
8	NOT USED	
9	METAL RAILINGS / GATES / CARPORTS	DUNN EDWARDS DE6357 BLACK TIE
10	GARAGE DOOR METAL PANEL	SHERWIN WILLIAMS SW7019 GAUNTLET GRAY
11	GARAGE DOOR METAL PANEL	DUNN EDWARDS DET648 WHITE PICKET FENCE

* SEE COLOR AND MATERIALS BOARD



biltform architecture
group, LLC.
11460 north cave creek road . suite 11
phoenix . arizona 85020
Phone 602.285.9200 Fax 602.285.9229

PRELIMINARY
NOT FOR
CONSTRUCTION

ASCEND at LONGBOW HIGHPOINT
MIXED USE PROJECT
CITY OF MESA, ARIZONA

Phone: (617) 390-8264

D.R. HORTON
America's Builder

1341 Horton Circle
Arlington, Texas 76001

REVISIONS:
1
2
3
4
REZONE SUBMITTAL
JOB NO: 21-031
DATE: SEPTEMBER 7, 2021
SCALE: 1/8" = 1'-0"
SHEET NO:

A6.5-MF
BLDG TYPE 02 - 13 PLEX

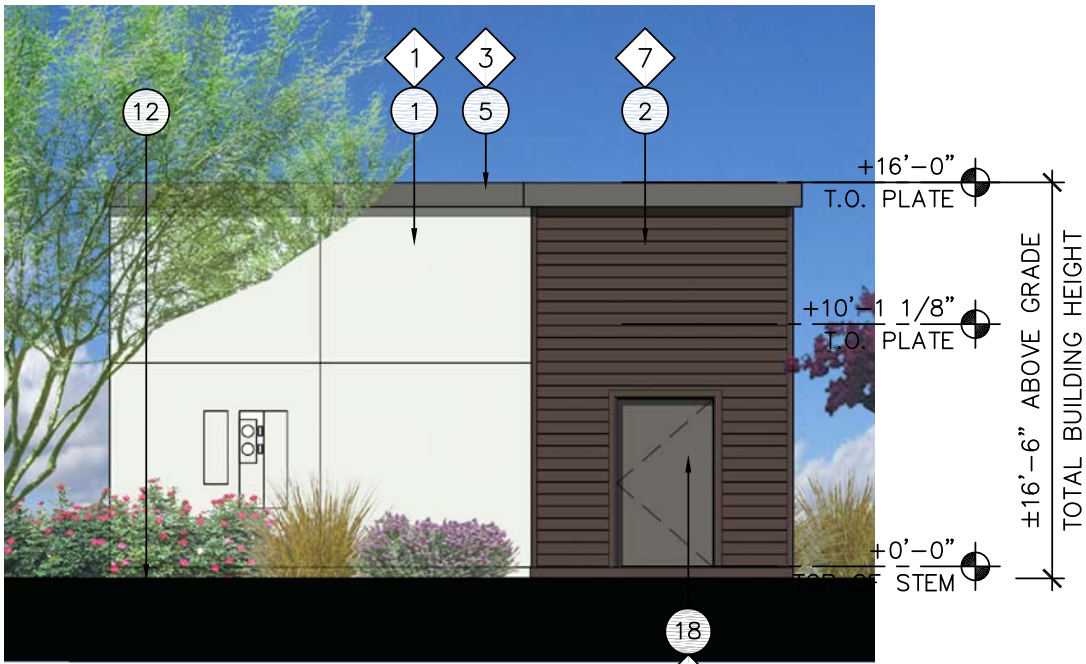
© BILTFORM ARCHITECTURE GROUP, INC.



4 RIGHT SIDE ELEVATION

SURFACE AREA: 521 SF
PRIMARY MATERIAL - 343 SF (66%)
STUCCO WHITE, LIGHT GRAY AND DARK GRAY

2ND PRIMARY MATERIAL - 178 SF (34%)
FAUX WOOD PLANK VENEER



3 REAR ELEVATION

SURFACE AREA: 456 SF
PRIMARY MATERIAL - 292 SF (64%)
STUCCO WHITE, LIGHT GRAY AND DARK GRAY.

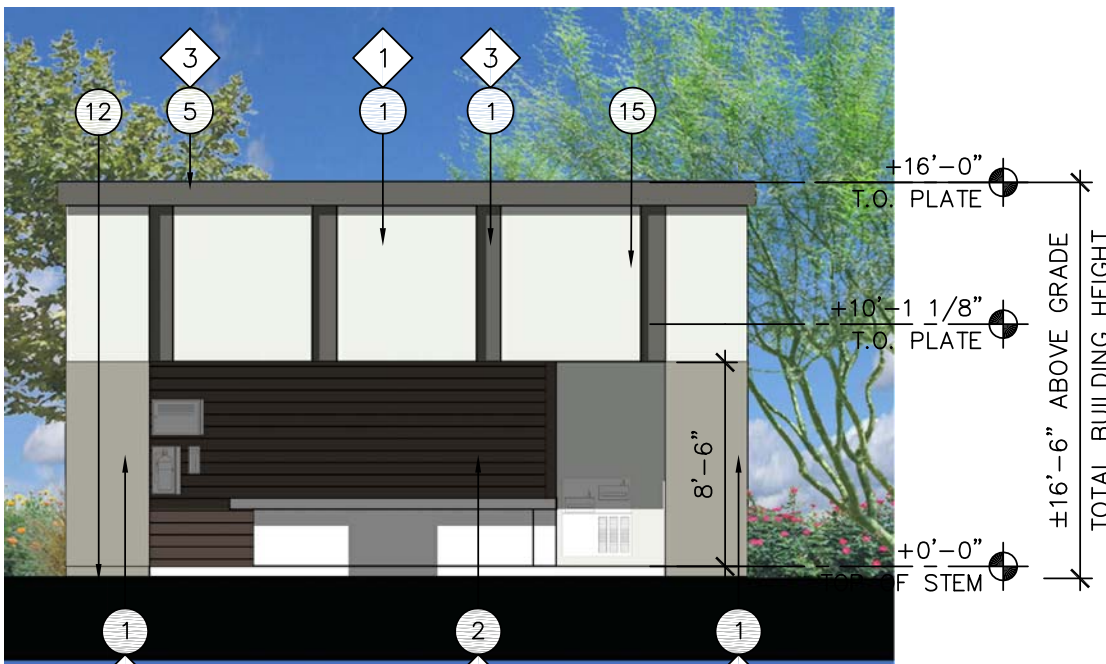
2ND PRIMARY MATERIAL - 164 SF (36%)
FAUX WOOD PLANK VENEER



2 LEFT SIDE ELEVATION

SURFACE AREA: 521 SF
PRIMARY MATERIAL - 343 SF (66%)
STUCCO WHITE, LIGHT GRAY AND DARK GRAY

2ND PRIMARY MATERIAL - 178 SF (34%)
FAUX WOOD PLANK VENEER



1 FRONT ELEVATION

SURFACE AREA: 456 SF
PRIMARY MATERIAL - 312 SF (68%)
STUCCO WHITE, LIGHT GRAY AND DARK GRAY

2ND PRIMARY MATERIAL - 144 SF (32%)
FAUX WOOD PLANK VENEER



BUILDING TYPE 3 - FRONT ELEVATION

SURFACE AREA: 1,712 SF
PRIMARY MATERIAL - 1,281 SF (75%)
STUCCO WHITE, LIGHT GRAY AND DARK GRAY

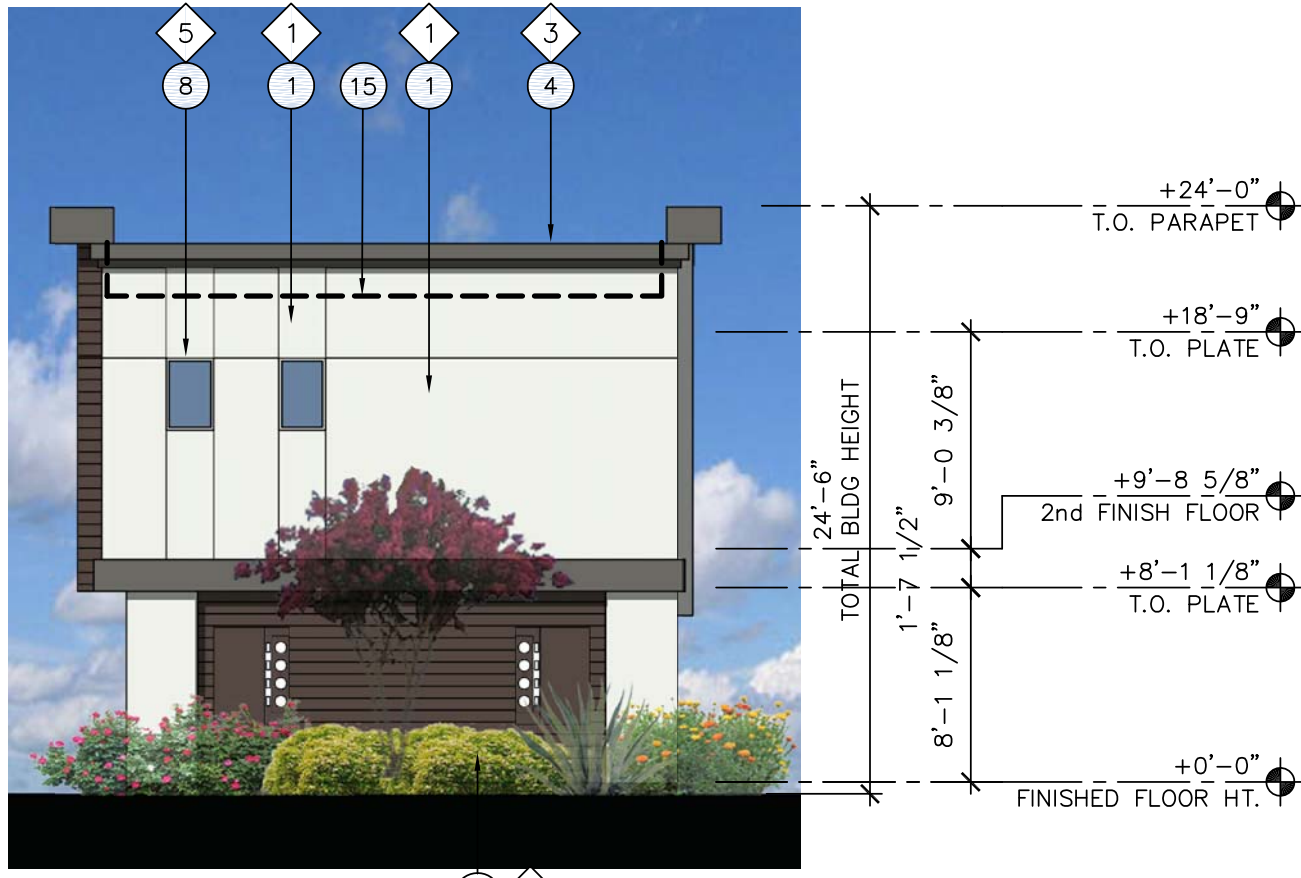
2ND PRIMARY MATERIAL - 431 SF (25%)
FAUX WOOD PLANK VENEER.



BUILDING TYPE 3 - REAR ELEVATION

SURFACE AREA: 1,703 SF
PRIMARY MATERIAL - 1,180 SF (69%)
STUCCO WHITE, LIGHT GRAY AND DARK GRAY

2ND PRIMARY MATERIAL - 523 SF (31%)
FAUX WOOD PLANK VENEER.



BUILDING TYPE 3 - RIGHT ELEVATION

SURFACE AREA: 577 SF
PRIMARY MATERIAL - 425 SF (74%)
STUCCO WHITE, LIGHT GRAY AND DARK GRAY

2ND PRIMARY MATERIAL - 152 SF (26%)
FAUX WOOD PLANK VENEER.



BUILDING TYPE 3 - LEFT ELEVATION

SURFACE AREA: 577 SF
PRIMARY MATERIAL - 425 SF (74%)
STUCCO WHITE, LIGHT GRAY AND DARK GRAY

2ND PRIMARY MATERIAL - 152 SF (26%)
FAUX WOOD PLANK VENEER.

ELEVATION KEY NOTES: #

1. EXTERIOR STUCCO SYSTEM - SAND FINISH
2. FAUX WOOD PLANKS
3. NOT USED
4. STEPPED PARAPET CAP WITH STUCCO SAND FINISH
5. WALL CAP WITH STUCCO SAND FINISH
6. METAL RAILING
7. PAINTED METAL CANOPY/LARGE OVERHANG
8. ALUMINUM OR VINYL FRAME WINDOW
9. SCREEN WALL, STAIRS BEYOND
10. METAL GARAGE DOOR
11. ALUMINUM STOREFRONT SYSTEM
12. FINISH GRADE
13. BREEZEWAY BEYOND
14. METAL STAIR SYSTEM WITH CONCRETE TREADS
15. LINE OF ROOF BEYOND, ALL PARAPETS HIGHER THAN ROOF MOUNTED EQUIPMENT.
16. STUCCO CONTROL/EXPANSION JOINT
17. ALUMINUM OR VINYL FRAME SLIDING GLASS DOOR
18. DOOR(S)
19. ALUMINUM STOREFRONT DOOR
20. EXTERIOR LIGHT FIXTURES
21. STUCCO OVER PATIO WALL - SAND FINISH
22. RECESSED WINDOW
23. ENTRY STATEMENT

GENERAL NOTES:

- A. SEE SITE PLAN FOR FIRE RISER AND METER PACK LOCATIONS PER BUILDING
- B. FOR ADDITIONAL PATIO WALL LAYOUTS AND INFORMATION SEE LANDSCAPE PLANS, SITE PLAN & DETAILS.
- C. SEE SECTIONS FOR ADDITIONAL HEIGHT INFO.
- D. WINDOW HEADER HEIGHTS TO BE AT 8'-0" A.F.F. TYP. - U.N.O. UNLESS NOTED OTHERWISE
- E. HORIZONTAL CONTROL JOINTS AT FINISH FLOOR LINE AND VERTICAL CONTROL JOINTS AT OPENINGS - TYP. AT ALL EXTERIOR ELEVATIONS
- F. PROVIDE WEEP MECHANISM AT ALL STUCCO TRANSITIONS FROM VERTICAL TO HORIZONTAL WALL CONDITIONS
- G. ROOF-MOUNTED EQUIPMENT SCREENING IS CONSTRUCTED AS AN ENCOMPASSING MONOLITHIC UNIT. THE HEIGHT OF THE SCREENING ELEMENT EQUALS OR EXCEEDS THE HEIGHT OF THE STRUCTURE'S TALLEST PIECE OF INSTALLED EQUIPMENT.
- H. GROUND-MOUNTED EQUIPMENT FACING A STREET OR NOT OTHERWISE SEPARATED FROM THE STREET BY INTERVENING BUILDING(S) IS SCREENED TO A HEIGHT OF AT LEAST 12 INCHES ABOVE THE EQUIPMENT. SCREENING DEVICES CONSIST OF DECORATIVE WALLS WITH SUPPLEMENTAL PLANT MATERIALS INCLUDING TREES, SHRUBS AND GROUNDCOVERS. FOR SCREEN WALLS THAT ARE 3 FEET IN HEIGHT OR LOWER, VEGETATIVE MATERIALS ARE SUBSTITUTED FOR 50 PERCENT OF THE SCREENING DEVICE.
- I. WALL-MOUNTED EQUIPMENT, INCLUDING BUT NOT LIMITED TO ELECTRICAL METERS, ELECTRICAL DISTRIBUTION CABINETS, SERVICE ENTRY SECTION (SES), FIRE SPRINKLER EQUIPMENT AND SIMILAR VALVES AND CABINETS THAT FACE A STREET, OR PUBLIC PARKING AND ARE NOT RECESSED AND/OR SEPARATED FROM THE STREET BY INTERVENING BUILDING(S) ARE SCREENED, INCORPORATING ELEMENTS OF THE BUILDING DESIGN, E.G. SHAPE, COLOR, TEXTURE AND MATERIAL. VEGETATIVE MATERIALS ARE SUBSTITUTED FOR UP TO 50 PERCENT OF THE SCREENING DEVICES WHEN USED IN CONJUNCTION WITH SCREEN WALLS THAT ARE 3 FEET IN HEIGHT OR LOWER.

EXTERIOR COLOR SCHEME:

1	STUCCO COLOR 1	DUNN EDWARDS DE1648 WHITE PICKET FENCE
2	STUCCO COLOR 2	SHERWIN WILLIAMS SW7017 DORIAN GRAY
3	STUCCO COLOR 3	SHERWIN WILLIAMS SW7019 GAUNTLET GRAY
4	NOT USED	
5	WINDOWS AND PATIO DOOR FRAMES	WHITE
6	STOREFRONTS AND EXTERIOR DOORS	BRONZE
7	FAUX WOOD PLANK VENEER	WOODSTONE PRE-FINISHED FIBER CEMENT LAP SIDING WARM ESPRESSO
8	NOT USED	
9	METAL RAILINGS / GATES / CARPORTS	DUNN EDWARDS DE6357 BLACK TIE
10	GARAGE DOOR METAL PANEL	SHERWIN WILLIAMS SW7019 GAUNTLET GRAY
11	GARAGE DOOR METAL PANEL	DUNN EDWARDS DE1648 WHITE PICKET FENCE

* SEE COLOR AND MATERIALS BOARD

biltform
architecture

biltform architecture
group, LLC.

11460 north cave creek road, suite 11
phoenix, arizona 85020
Phone 602.285.9200 Fax 602.285.9229

PRELIMINARY
NOT FOR
CONSTRUCTION

ASCEND at LONGBOW HIGHPOINT
MIXED USE PROJECT
CITY OF MESA, ARIZONA

Phone: (617) 390-8264

D-R HORTON
America's Builder

1341 Horton Circle
Arlington, Texas 76001

REVISIONS:

1		
2		
3		
4		

REZONE SUBMITTAL

JOB NO: 21-031
DATE: SEPTEMBER 7, 2021
SCALE: 1/8" = 1'-0"
SHEET NO:

A7.3C



ELEVATION - CLUBHOUSE - FRONT

SURFACE AREA: 1,881 SF
PRIMARY MATERIAL - 1,301 SF (69%)
STUCCO WHITE, LIGHT AND DARK GRAY
2ND PRIMARY MATERIAL - 580 SF (31%)
FAUX WOOD PLANK



ELEVATION - CLUBHOUSE - RIGHT SIDE

SURFACE AREA: 1,821 SF
PRIMARY MATERIAL - 1,301 SF (75%)
STUCCO WHITE, LIGHT AND DARK GRAY
2ND PRIMARY MATERIAL - 520 SF (28%)
FAUX WOOD PLANK



ELEVATION - CLUBHOUSE - REAR

SURFACE AREA: 2,030 SF
PRIMARY MATERIAL - 1,511 SF (74%)
STUCCO WHITE, LIGHT AND DARK GRAY
2ND PRIMARY MATERIAL - 519 SF (26%)
FAUX WOOD PLANK



ELEVATION - CLUBHOUSE - LEFT SIDE

SURFACE AREA: 1,939 SF
PRIMARY MATERIAL - 1,449 SF (75%)
STUCCO WHITE, LIGHT AND DARK GRAY
2ND PRIMARY MATERIAL - 490 SF (25%)
FAUX WOOD PLANK

ELEVATION KEY NOTES: (#)

1. EXTERIOR STUCCO SYSTEM - SAND FINISH
2. STUCCO SAND FINISH OVER FRAMED PARAPET.
3. FOAM PARAPET CAP WITH STUCCO SAND FINISH.
4. POP-OUT WITH STUCCO SAND FINISH.
5. FAUX WOOD PLANK VENEER.
6. METAL RAILING.
7. PAINTED METAL AWNING.
8. ALUMINUM OR VINYL FRAMED WINDOW UNIT.
9. ROOF SCUPPER.
10. METAL SCUPPER AT BALCONY.
11. ROOF LEADER DISCHARGE.
12. ALUMINUM STOREFRONT SYSTEM.
13. FINISH GRADE.
14. BREEZEWAY BEYOND.
15. OVERHEAD GARAGE DOOR WITH TEMPERED WINDOWS (WHERE OCCURS).
16. STUCCO CONTROL JOINT.
17. ALUMINUM SLIDING GLASS DOOR.
18. SINGLE LITE DOOR
19. HOLLOW METAL DOOR(S) AND FRAME - PAINTED.
20. EXTERIOR LIGHT FIXTURES.
21. FAUX STONE VENEER.
22. 2 x 6 FRAMED WALL CAP.
23. 6" HIGH METAL SECURITY GATE.
24. BUILDING ID ALIGNED WITH TOPS OF WINDOWS.
25. EXTERIOR LIGHTING FIXTURE LOCATION PER ELECTRICAL SITE LIGHTING PLAN. (WHERE OCCURS)
26. LINE OF ROOF DECK
27. LOCATION OF MECHANICAL EQUIPMENT

GENERAL NOTES:

- A. SEE SITE PLAN FOR FIRE RISER AND METER PACK LOCATIONS PER BUILDING
- B. FOR ADDITIONAL PATIO WALL LAYOUTS AND INFORMATION SEE LANDSCAPE PLANS, SITE PLAN & DETAILS.
- C. SEE SECTIONS FOR ADDITIONAL HEIGHT INFO.
- D. WINDOW HEADER HEIGHTS TO BE AT 8'-0" A.F.F. TYP. - U.N.O. UNLESS NOTED OTHERWISE
- E. HORIZONTAL CONTROL JOINTS AT FINISH FLOOR LINE AND VERTICAL CONTROL JOINTS AT OPENINGS - TYP. AT ALL EXTERIOR ELEVATIONS
- F. PROVIDE WEEP MECHANISM AT ALL STUCCO TRANSITIONS FROM VERTICAL TO HORIZONTAL WALL CONDITIONS
- G. ROOF-MOUNTED EQUIPMENT SCREENING IS CONSTRUCTED AS AN ENCOMPASSING MONOLITHIC UNIT. THE HEIGHT OF THE SCREENING ELEMENT EQUALS OR EXCEEDS THE HEIGHT OF THE STRUCTURE'S TALLEST PIECE OF INSTALLED EQUIPMENT.
- H. GROUND-MOUNTED EQUIPMENT FACING A STREET OR NOT OTHERWISE SEPARATED FROM THE STREET BY INTERVENING BUILDING(S) IS SCREENED TO A HEIGHT OF AT LEAST 12 INCHES ABOVE THE EQUIPMENT. SCREENING DEVICES CONSIST OF DECORATIVE WALLS WITH SUPPLEMENTAL PLANT MATERIALS INCLUDING TREES, SHRUBS AND GROUNDCOVERS. FOR SCREEN WALLS THAT ARE 3 FEET IN HEIGHT OR LOWER, VEGETATIVE MATERIALS ARE SUBSTITUTED FOR 50 PERCENT OF THE SCREENING DEVICE.
- I. WALL-MOUNTED EQUIPMENT, INCLUDING BUT NOT LIMITED TO ELECTRICAL METERS, ELECTRICAL DISTRIBUTION CABINETS, SERVICE ENTRY SECTION (SES), FIRE SPRINKLER EQUIPMENT AND SIMILAR VALVES AND CABINETS THAT FACE A STREET, OR PUBLIC PARKING AND ARE NOT RECESSED AND/OR SEPARATED FROM THE STREET BY INTERVENING BUILDING(S) ARE SCREENED, INCORPORATING ELEMENTS OF THE BUILDING DESIGN, E.G. SHAPE, COLOR, TEXTURE AND MATERIAL. VEGETATIVE MATERIALS ARE SUBSTITUTED FOR UP TO 50 PERCENT OF THE SCREENING DEVICES WHEN USED IN CONJUNCTION WITH SCREEN WALLS THAT ARE 3 FEET IN HEIGHT OR LOWER.

EXTERIOR COLOR SCHEME:		
1	STUCCO COLOR 1	DUNN EDWARDS DE1648 WHITE PICKET FENCE
2	STUCCO COLOR 2	SHERWIN WILLIAMS SW7017 DORIAN GRAY
3	STUCCO COLOR 3	SHERWIN WILLIAMS SW7019 GAUNTLET GRAY
4	NOT USED	
5	WINDOWS AND PATIO DOOR FRAMES	WHITE
6	STOREFRONTS AND EXTERIOR DOORS	BRONZE
7	FAUX WOOD PLANK VENEER	WOODSTONE PRE-FINISHED FIBER CEMENT LAP-SIDING WARM ESPRESSO
8	NOT USED	
9	METAL RAILINGS / GATES / CARPORTS	DUNN EDWARDS DE6357 BLACK TIE
10	GARAGE DOOR METAL PANEL	SHERWIN WILLIAMS SW7019 GAUNTLET GRAY
11	GARAGE DOOR METAL PANEL	DUNN EDWARDS DE1648 WHITE PICKET FENCE

* SEE COLOR AND MATERIALS BOARD



biltform architecture
group, LLC.

11460 north cave creek road . suite 11
phoenix . arizona 85020
Phone 602.285.9200 Fax 602.285.9229

PRELIMINARY
NOT FOR
CONSTRUCTION

ASCEND at LONGBOW HIGHPOINT
MIXED USE PROJECT
CITY OF MESA, ARIZONA

Phone (617) 390-8264

D.R. HORTON
America's Builder

1341 Horton Circle
Arlington, Texas 76001

REVISIONS:

1		
2		
3		
4		

REZONE SUBMITTAL

JOB NO: 21-031

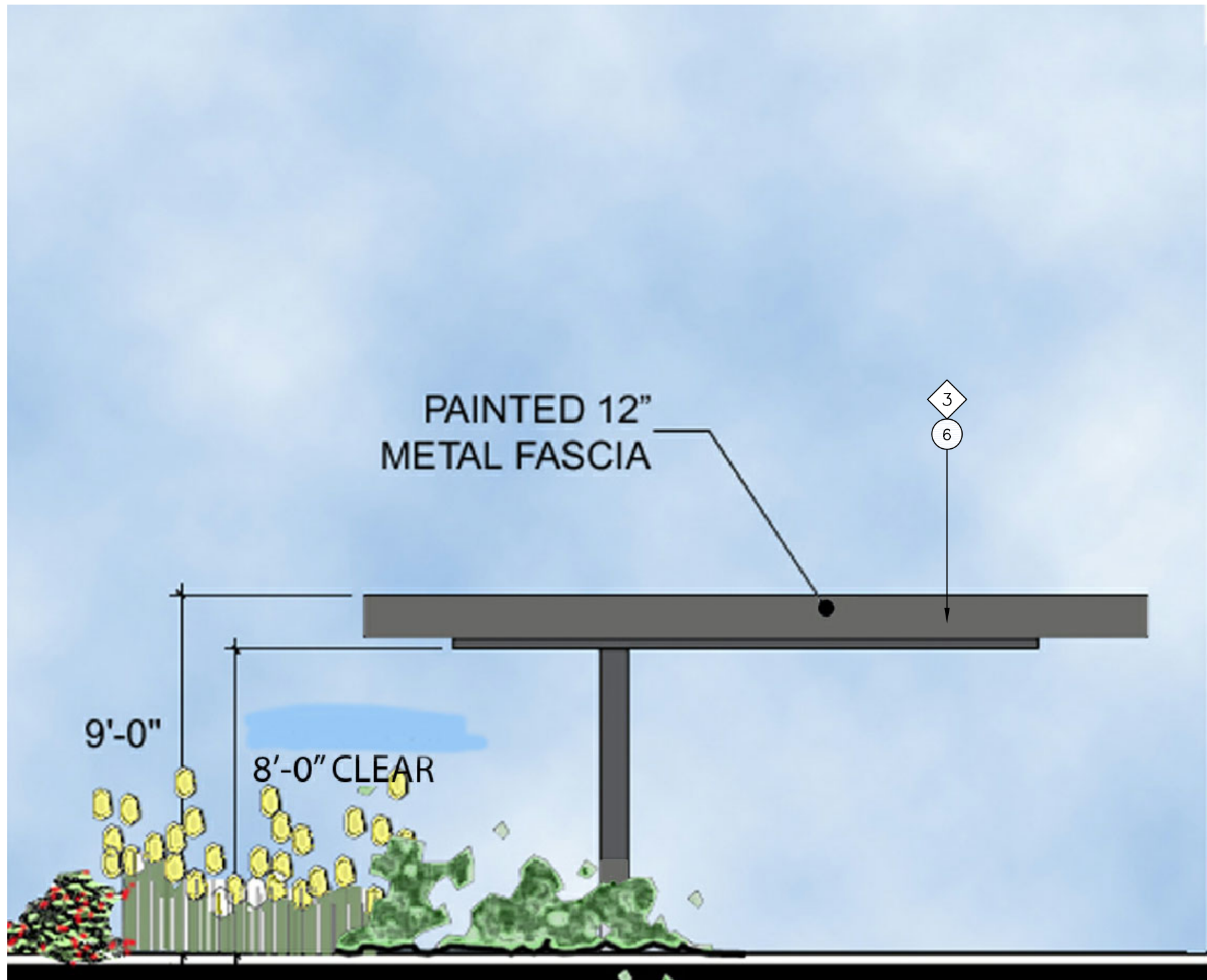
DATE: SEPTEMBER 7, 2021

SCALE: 1/8" = 1'-0"

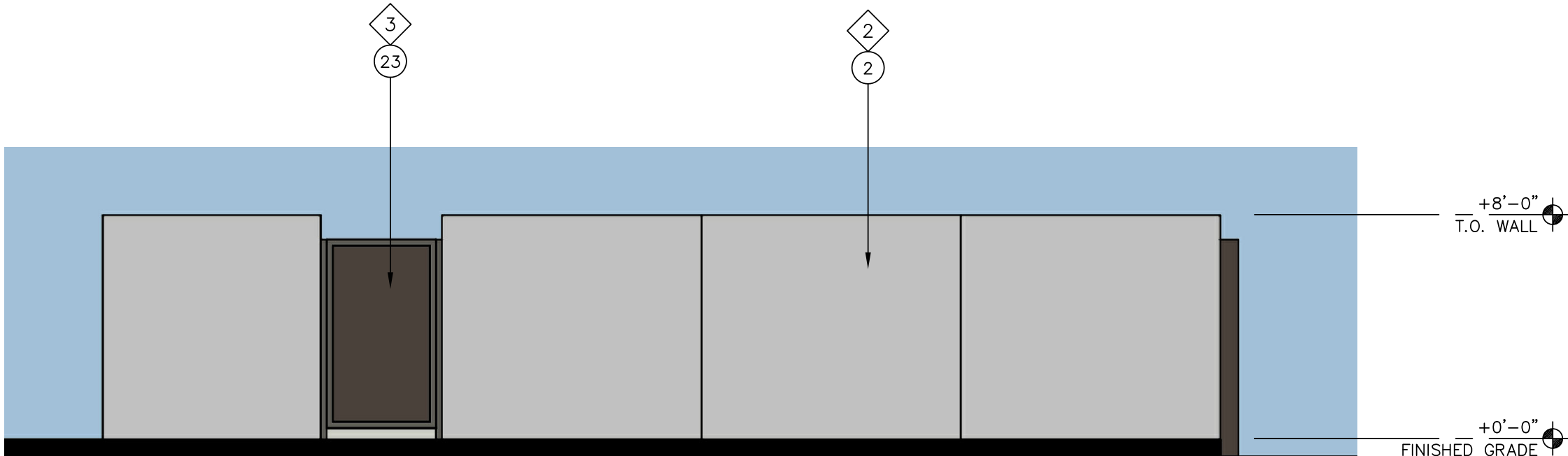
SHEET NO:

A8.4-CH
CLUBHOUSE

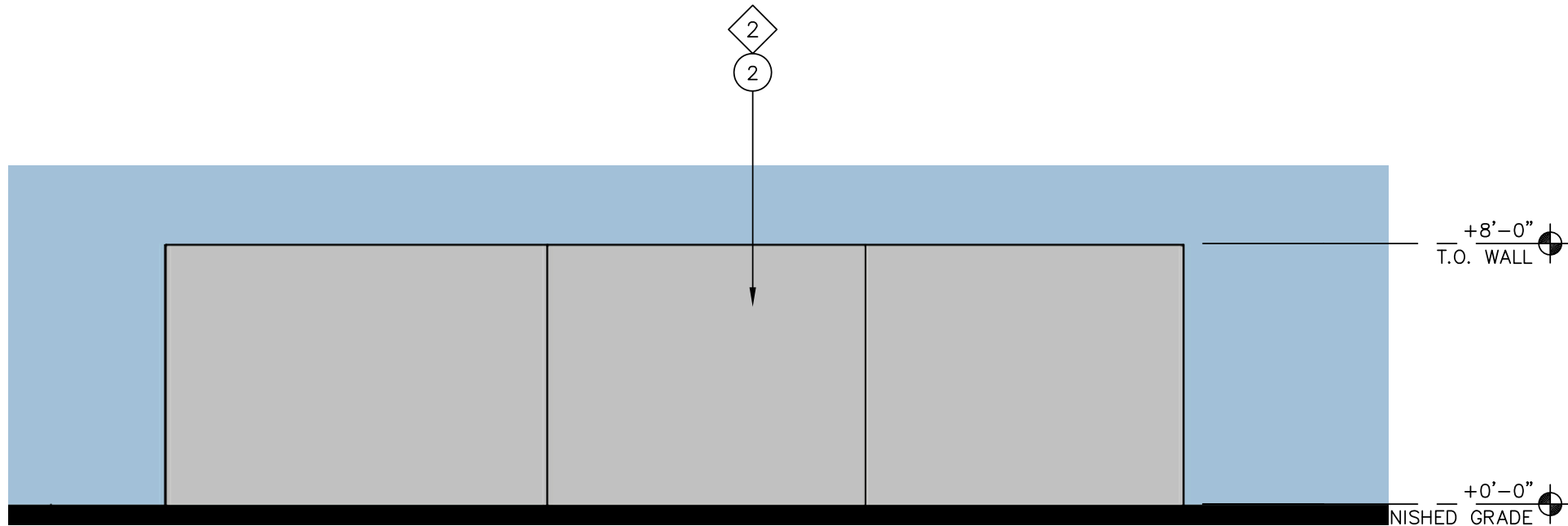
© BILTFORM ARCHITECTURE GROUP, INC.



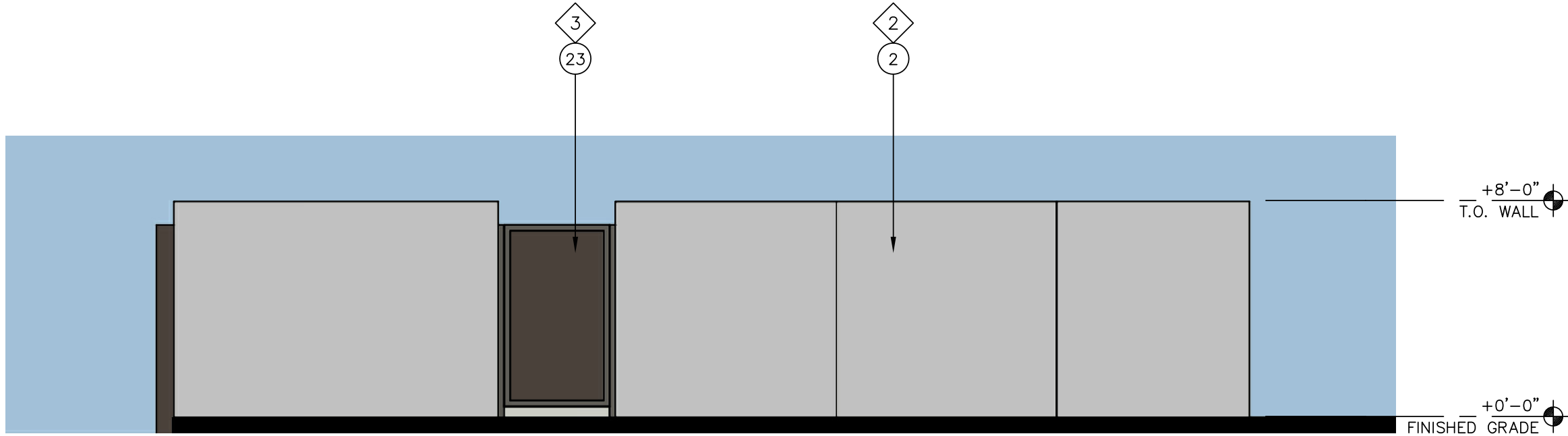
TYPICAL CARPORT ELVATION



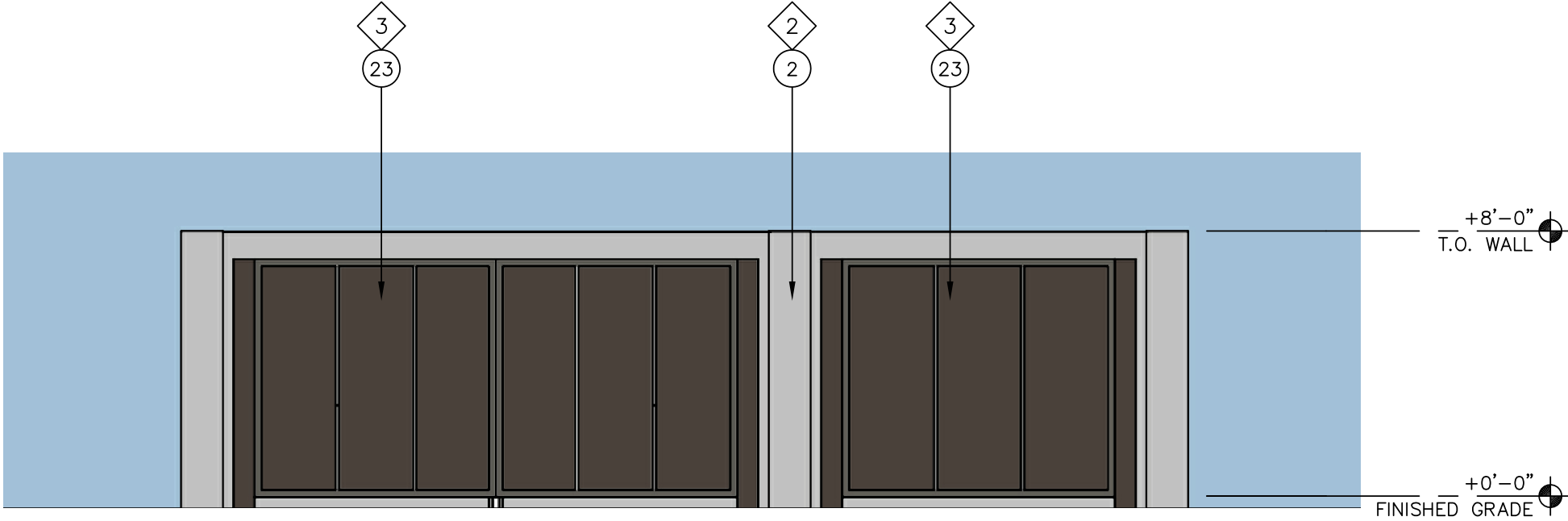
TRASH ENCLOSURE - LEFT ELEVATION



TRASH ENCLOSURE - REAR ELEVATION



TRASH ENCLOSURE - RIGHT ELEVATION



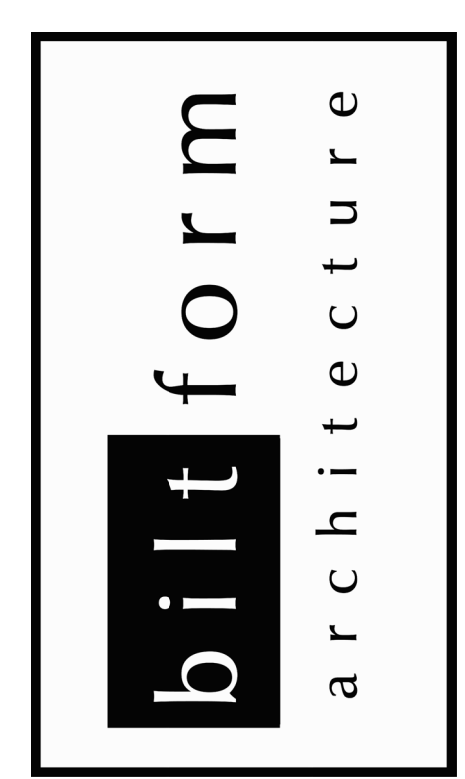
TRASH ENCLOSURE - FRONT ELEVATION

ELEVATION KEY NOTES: (#)	
1.	PARAPET CAP WITH STUCCO SAND FINISH
2.	EXTERIOR STUCCO FINISH SYSTEM – SAND FINISH
3.	FAUX WOOD PLANK VENEER
4.	FOAM HEADER PROFILE
5.	FOAM WINDOW SURROUND WITH STUCCO SAND FINISH
6.	LINE OF ROOF DECK
7.	VERTICAL FOAM PROFILE WITH STUCCO SAND FINISH
8.	FRAME COLUMN WITH STUCCO FINISH
9.	METAL RAILING
10.	STONE VENEER
11.	HORIZONTAL FOAM BANDING WITH STUCCO SAND FINISH
12.	GARAGE DOOR PER PLAN.
13.	WOOD FRAMED PATIO WALL
14.	VINYL WINDOW PER PLAN. INSTALL PER FLASHING AND WATERPROOF DETAILS
15.	STUCCO CONTROL JOINT
16.	DOOR
17.	STAIRS
18.	BALCONY RAILING
19.	STOREFRONT DOOR/WINDOW
20.	LIGHT FIXTURE LOCATION
21.	BBQ STATION WITH STUCCO SAND FINISH
22.	DECORATIVE MASONRY
23.	STEEL GATE AT TRASH ENCLOSURE
24.	LOCATIONS OF MECHANICAL EQUIPMENT
25.	FIBER CEMENT WINDOW TRIM.

GENERAL NOTES:	
A.	SEE SITE PLAN FOR FIRE RISER AND METER PACK LOCATIONS PER BUILDING
B.	FOR ADDITIONAL PATIO WALL LAYOUTS AND INFORMATION SEE LANDSCAPE PLANS, SITE PLAN & DETAILS.
C.	SEE SECTIONS FOR ADDITIONAL HEIGHT INFO.
D.	WINDOW HEADER HEIGHTS TO BE AT 8'-0" A.F.F. TYP. – U.N.O. UNLESS NOTED OTHERWISE
E.	HORIZONTAL CONTROL JOINTS AT FINISH FLOOR LINE AND VERTICAL CONTROL JOINTS AT OPENINGS – TYP. AT ALL EXTERIOR ELEVATIONS
F.	PROVIDE WEEP MECHANISM AT ALL STUCCO TRANSITIONS FROM VERTICAL TO HORIZONTAL WALL CONDITIONS
G.	ROOF-MOUNTED EQUIPMENT SCREENING IS CONSTRUCTED AS AN ENCOMPASSING MONOLITHIC UNIT. THE HEIGHT OF THE SCREENING ELEMENT EQUALS OR EXCEEDS THE HEIGHT OF THE STRUCTURE'S TALLEST PIECE OF INSTALLED EQUIPMENT.
H.	GROUND-MOUNTED EQUIPMENT FACING A STREET OR NOT OTHERWISE SEPARATED FROM THE STREET BY INTERVENING BUILDING(S) IS SCREENED TO A HEIGHT OF AT LEAST 12 INCHES ABOVE THE EQUIPMENT. SCREENING DEVICES CONSIST OF DECORATIVE WALLS WITH SUPPLEMENTAL PLANT MATERIALS INCLUDING TREES, SHRUBS AND GROUNDCOVERS. FOR SCREEN WALLS THAT ARE 3 FEET IN HEIGHT OR LOWER, VEGETATIVE MATERIALS ARE SUBSTITUTED FOR 50 PERCENT OF THE SCREENING DEVICE.
I.	WALL-MOUNTED EQUIPMENT, INCLUDING BUT NOT LIMITED TO ELECTRICAL METERS, ELECTRICAL DISTRIBUTION CABINETS, SERVICE ENTRY SECTION (SES), FIRE SPRINKLER EQUIPMENT AND SIMILAR VALVES AND CABINETS THAT FACE A STREET, OR PUBLIC PARKING AND ARE NOT RECESSED AND/OR SEPARATED FROM THE STREET BY INTERVENING BUILDING(S) ARE SCREENED, INCORPORATING ELEMENTS OF THE BUILDING DESIGN, E.G. SHAPE, COLOR, TEXTURE AND MATERIAL. VEGETATIVE MATERIALS ARE SUBSTITUTED FOR UP TO 50 PERCENT OF THE SCREENING DEVICES WHEN USED IN CONJUNCTION WITH SCREEN WALLS THAT ARE 3 FEET IN HEIGHT OR LOWER.

EXTERIOR COLOR SCHEME:		
1	STUCCO COLOR 1	DUNN EDWARDS DET648 WHITE PICKET FENCE
2	STUCCO COLOR 2	SHERWIN WILLIAMS SW7017 DORIAN GRAY
3	STUCCO COLOR 3	SHERWIN WILLIAMS SW7019 GAUNTLET GRAY
4	NOT USED	
5	WINDOWS AND PATIO DOOR FRAMES	WHITE
6	STOREFRONTS AND EXTERIOR DOORS	BRONZE
7	FAUX WOOD PLANK VENEER	WOODSTONE PRE-FINISHED FIBER CEMENT LAP SIDING WARM ESPRESSO
8	NOT USED	
9	METAL RAILINGS / GATES / CARPORTS	DUNN EDWARDS DE6357 BLACK TIE
10	GARAGE DOOR METAL PANEL	SHERWIN WILLIAMS SW7019 GAUNTLET GRAY
11	GARAGE DOOR METAL PANEL	DUNN EDWARDS DET648 WHITE PICKET FENCE

* SEE COLOR AND MATERIALS BOARD



biltform architecture group, LLC.
11460 north cave creek road , suite 11
phoenix , arizona 85020
Phone 602.285.9200 Fax 602.285.9229

PRELIMINARY
NOT FOR
CONSTRUCTION

ASCEND at LONGBOW HIGHPOINT
MIXED USE PROJECT
CITY OF MESA, ARIZONA

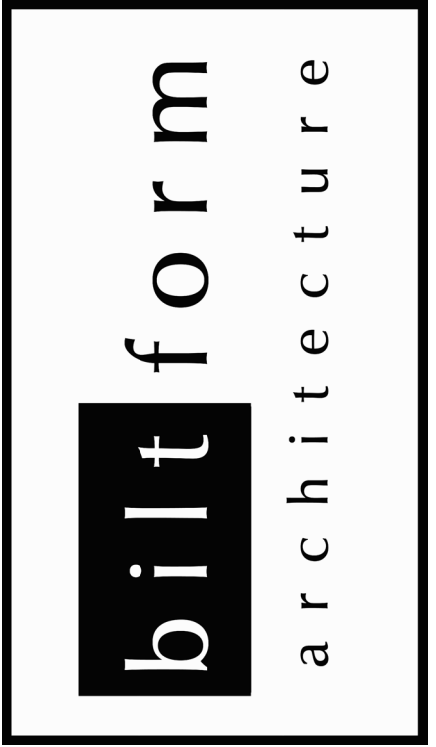
Phone: (617) 390-8264

D.R. HORTON
America's Builder

1341 Horton Circle
Arlington, Texas 76001

REVISIONS:	
1	
2	
3	
4	
REZONE SUBMITTAL	
JOB NO:	21-031
DATE:	SEPTEMBER 7, 2021
SCALE:	1/4" = 1'-0"
SHEET NO:	

A13.1C-TE
TRASH ENCLOSURE / CARPORT



biltform architecture
group, LLC.
11460 north cave creek road - suite 11
phoenix - arizona 85020
Phone 602.285.9200 Fax 602.285.9229

PRELIMINARY
NOT FOR
CONSTRUCTION

ASCEND at LONGBOW HIGHPOINT
MIXED USE PROJECT
CITY OF MESA, ARIZONA

Phone: (617) 390-8264

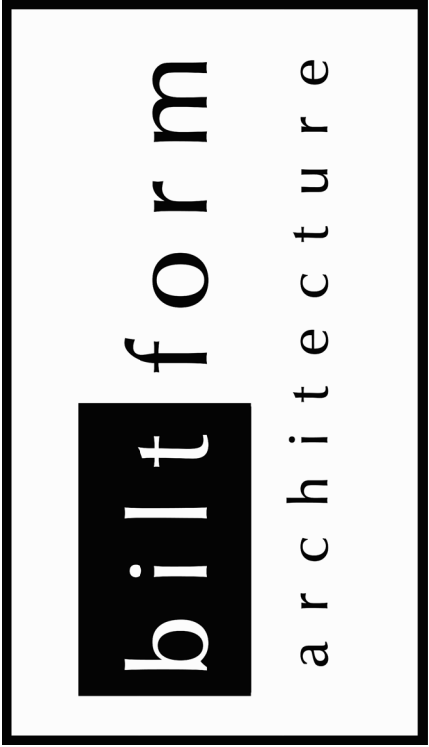
D.R. HORTON
America's Builder

1341 Horton Circle
Arlington, Texas 76001

REVISIONS:	
△	
△	
△	
△	
REZONE SUBMITTAL	
JOB NO:	21-031
DATE:	SEPTEMBER 7, 2021
SCALE:	N.T.S.
SHEET NO:	

A11.1C
RENDERING

TANDEM PARKING EXHIBIT



biltform architecture
group, LLC.
11460 north cave creek road, suite 11
phoenix, arizona 85020
Phone 602.285.9200 Fax 602.285.9229

PRELIMINARY
NOT FOR
CONSTRUCTION

ASCEND at LONGBOW HIGHPOINT
MIXED USE PROJECT
CITY OF MESA, ARIZONA

Phone: (617) 390-8264

D.R. HORTON
America's Builder

1341 Horton Circle
Arlington, Texas 76011

REVISIONS:	
1	
2	
3	
4	
REZONE SUBMITTAL	
JOB NO:	21-031
DATE:	SEPTEMBER 7, 2021
SCALE:	N.T.S.
SHEET NO:	

MULTI-FAMILY RETAIL INTERFACE EXHIBIT

A11.2C
RENDERING