

# EXHIBIT A LEGAL DESCRIPTION PUFE ABANDONMENT

A PORTION OF THE PUFE RECORDED IN DOCUMENT NO. 2000-0224802, RECORDS OF MARICOPA COUNTY, ARIZONA LOCATED IN THE NORTHWEST QUARTER OF SECTION 36, TOWNSHIP 1 NORTH, RANGE 6 EAST, OF THE GILA AND SALT RIVER MERIDIAN, MARICOPA COUNTY, ARIZONA MORE PARTICULARLY DESCRIBED AS FOLLOWS:

COMMENCING AT THE NORTHWEST CORNER OF SAID SECTION 36, FROM WHICH THE NORTH QUARTER CORNER OF SAID SECTION 36 BEARS NORTH 89°40'07" EAST, A DISTANCE OF 2640.56 FEET;

THENCE ALONG THE NORTH LINE OF SAID SECTION 36, NORTH 89°40'07" EAST, A DISTANCE OF 569.51 FEET;

THENCE LEAVING SAID NORTH LINE, SOUTH 00°19'53" EAST, A DISTANCE OF 641.39 FEET TO THE POINT OF BEGINNING;

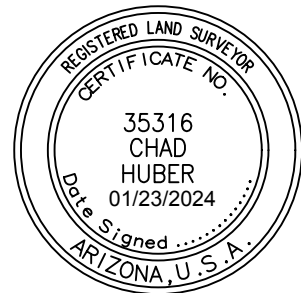
THENCE SOUTH 45°16'12" EAST, A DISTANCE OF 28.30 FEET;

THENCE SOUTH 00°17'25" EAST, A DISTANCE OF 173.80 FEET;

THENCE NORTH 45°09'07" WEST, A DISTANCE OF 28.36 FEET;

THENCE NORTH 00°17'25" WEST, A DISTANCE OF 173.72 FEET TO THE POINT OF BEGINNING.

SAID PARCEL CONTAINING 3,476 SQ. FT. OR 0.079 ACRES MORE OR LESS



CHAD W. HUBER  
RLS 35316  
7740 N. 16TH STREET, SUITE 300  
PHOENIX, ARIZONA 85020  
PH. 602-837-5511  
chad.huber@kimley-horn.com

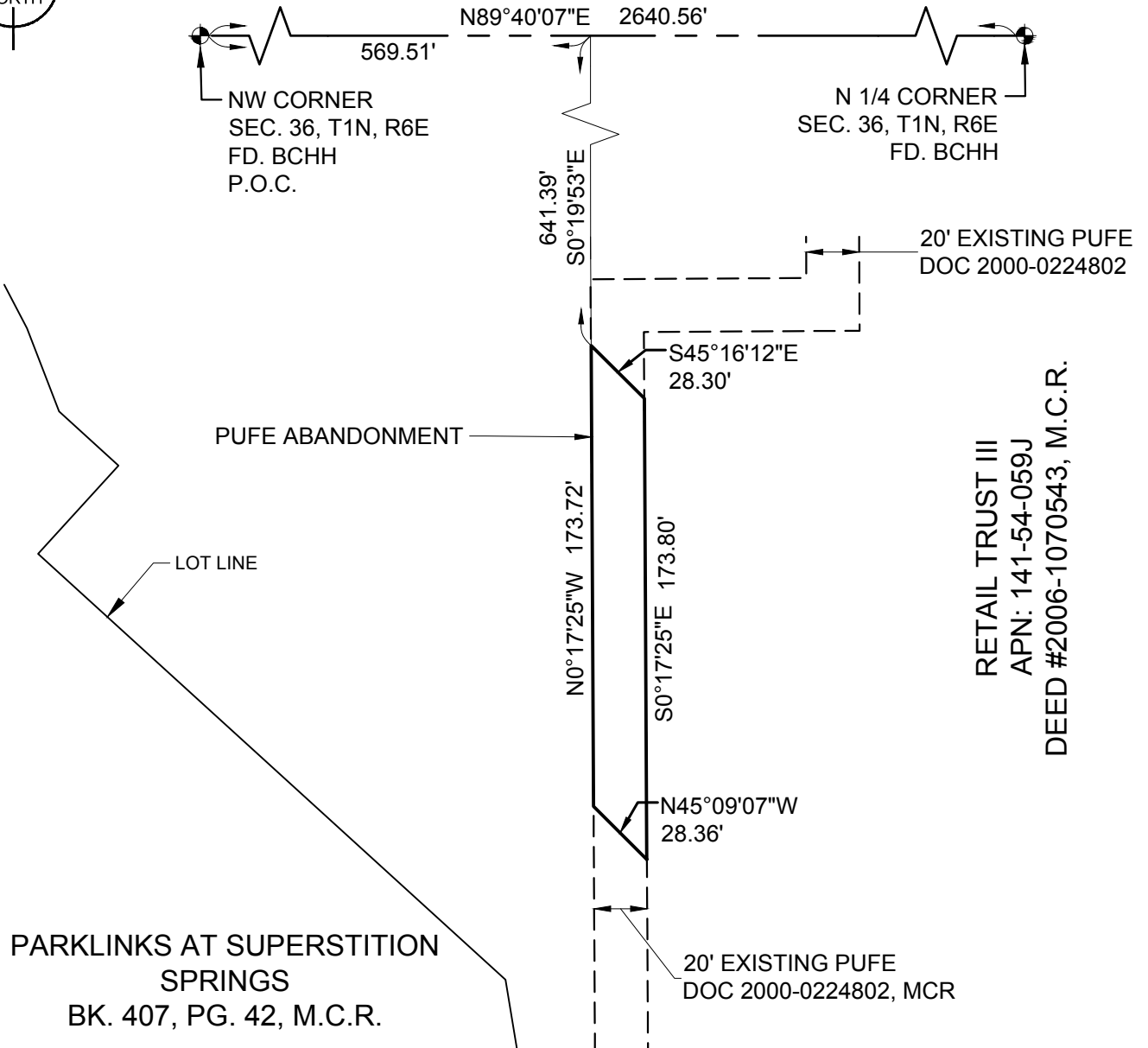
## Kimley»Horn

7740 N. 16TH ST, Suite 300  
PHOENIX, AZ 85020

Tel. No. (602) 837-5511

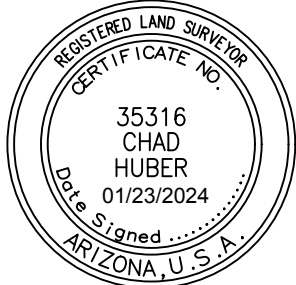
Scale	Drawn by	Checked by	Date	Project No.	Sheet No.
N/A	CWH	CWH	01/23/2024	091502440	1 OF 2

# EXHIBIT A



PARKLINKS AT SUPERSTITION  
SPRINGS  
BK. 407, PG. 42, M.C.R.

RETAIL TRUST III  
APN: 141-54-059J  
DEED #2006-1070543, M.C.R.



CHAD W. HUBER  
RLS 35316  
7740 N. 16TH STREET, SUITE 300  
PHOENIX, ARIZONA 85020  
PH. 602-837-5511  
chad.huber@kimley-horn.com

**Kimley»Horn**  
7740 N. 16TH ST, Suite 300  
PHOENIX, AZ 85020  
Tel. No. (602) 837-5511

Scale	Drawn by	Checked by	Date	Project No.	Sheet No.
N.T.S.	CWH	CWH	01/23/2024	091502440	2 OF 2