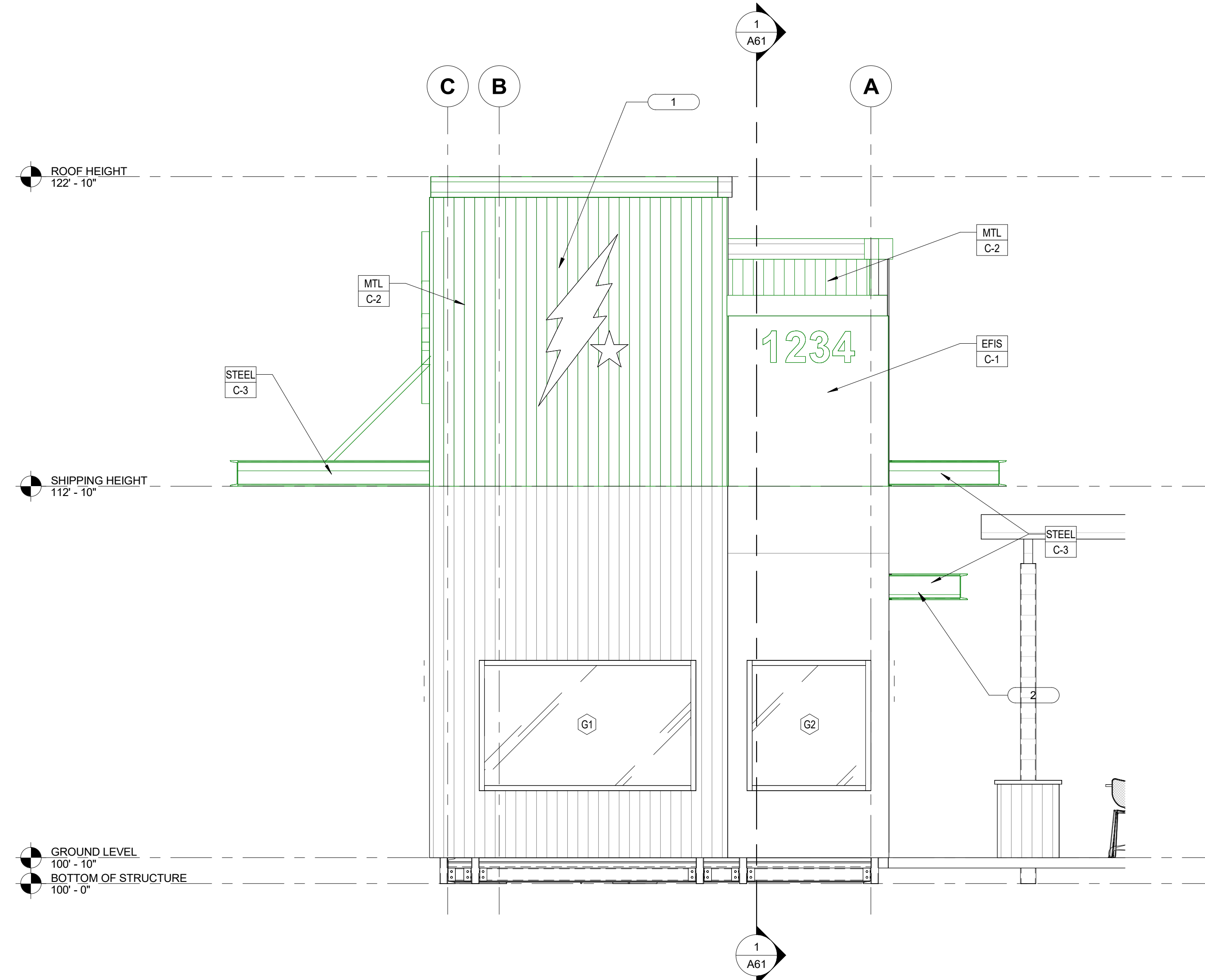


1 Elevation 1 - a
3/8" = 1'-0"



2 Elevation 2 - a
3/8" = 1'-0"

MATERIALS & FINISH SCHEDULE:

X	MATERIAL	#	FINISH/COLOR
EFIS	DRYVIT W/ TERRAZO STONE FINISH	C-1	EVEREST BY DRYVIT
MTL	7.2 WESTERN RIB METAL SIDING	C-2	CORTEN AZP RAW (PAINTED)
HARDI	JAMES HARDIE "HARI PLANK" SMOOTH LAP SIDING WITH 8" EXPOSURE AND 3.5" HARDI TRIM AT CORNERS	C-3	PAINTED SHERWIN WILLIAMS SW 6258 TRICORN BLACK WITH SATIN FINISH
STEEL	STEEL I-BEAM		

GENERAL NOTES:

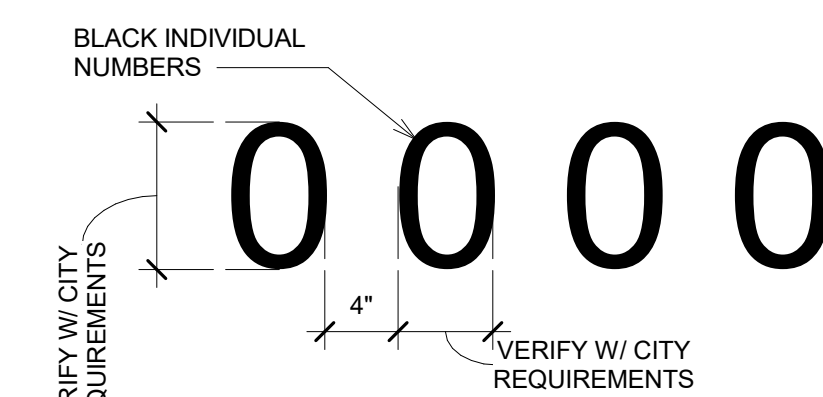
- FINISHES ARE ALSO REQUIRED AT PORTIONS OF UNDERSIDE, INSIDE FACE OF PARAPETS, AND SOFFITS EXPOSED TO PUBLIC VIEW.
- THE REFERENCE ELEVATION MARKED WITH REPRESENTS VERTICAL HEIGHTS RELATIVE TO INTERIOR FLOOR DATUM ASSUMED AT 100'-0", CW/ CIVIL FOR ACTUAL FLOOR ELEVATION.
- ALL MATERIAL SYMBOLS ARE FOR REPRESENTATION ONLY. CONTRACTOR IS RESPONSIBLE FOR DETERMINING PROPER COURSING, ETC.
- LOCATION FOR ADDRESS SIGNAGE TO BE INSTALLED AS REQUIRED AND APPROVED BY THE CITY OF CALDWELL, ID.
- ALL ROOFTOP EQUIPMENT TO BE SCREENED BY WALLS OR EQUIPMENT SCREENS.
- COORDINATE LOCATION OF KNOXBOX WITH FIRE MARSHALL.
- PROVIDE AND INSTALL SEALANT AS NEEDED AT ALL MATERIAL/SURFACE/FINISH JOINTS TO CREATE WEATHER TIGHT SEAL. EXTERIOR CAULK COLOR TO MATCH ADJACENT MATERIAL COLOR.
- PROVIDE CONTINUOUS SEALANT AROUND ALL PENETRATIONS, ELECTRICAL LIGHTING, AND OTHER SURFACE MOUNTED COMPONENTS.

SHEET NOTES:

- EVERYTHING ABOVE 12'-10" SHALL BE INSTALLED ON SITE BY FACTORY
- AWNINGS TO BE INSTALLED ON SITE BY FACTORY

SCOPE DESIGNATION LEGEND

- BLUE LINES AND NOTES: WORK TO BE PERFORMED ON SITE BY GENERAL CONTRACTOR (GC) AND INSPECTED IN FIELD BY LOCAL AHJ
- BLACK LINES AND NOTES: WORK TO BE PERFORMED IN FACTORY AND INSPECTED AT FACTORY BY THIRD PARTY INSPECTION AS REQUIRED BY AHJ
- GREEN LINES AND NOTES: WORK TO BE PERFORMED ON SITE BY FACTORY AND INSPECTED IN FIELD BY LOCAL AHJ



NOTE: VERIFY ADDRESS WITH CITY OF _____ REQUIREMENTS.

3 BUILDING ADDRESS SIGNAGE
1 1/2" = 1'-0"

200 BROAD STREET
BOISE, IDAHO
PHONE: 208-343-4635 • FAX: 208-343-1858
PROPERTY OF THE ARCHITECT/ENGINEER. THESE DRAWINGS AND SPECIFICATIONS SHALL NOT BE REPRODUCED OR TRANSMITTED IN ANY FORM OR BY ANY MEANS, ELECTRONIC OR MECHANICAL, INCLUDING PHOTOCOPYING, RECORDING, OR BY ANY INFORMATION STORAGE AND RETRIEVAL SYSTEM. WITHOUT THE WRITTEN CONSENT OF CSHQA OR ITS AFFILIATES.
Copyright © 2024

200 BROAD STREET
BOISE, ID 83702
PHONE: (208) 343-4635 • FAX: (208) 343-1858
http://www.cshqa.com

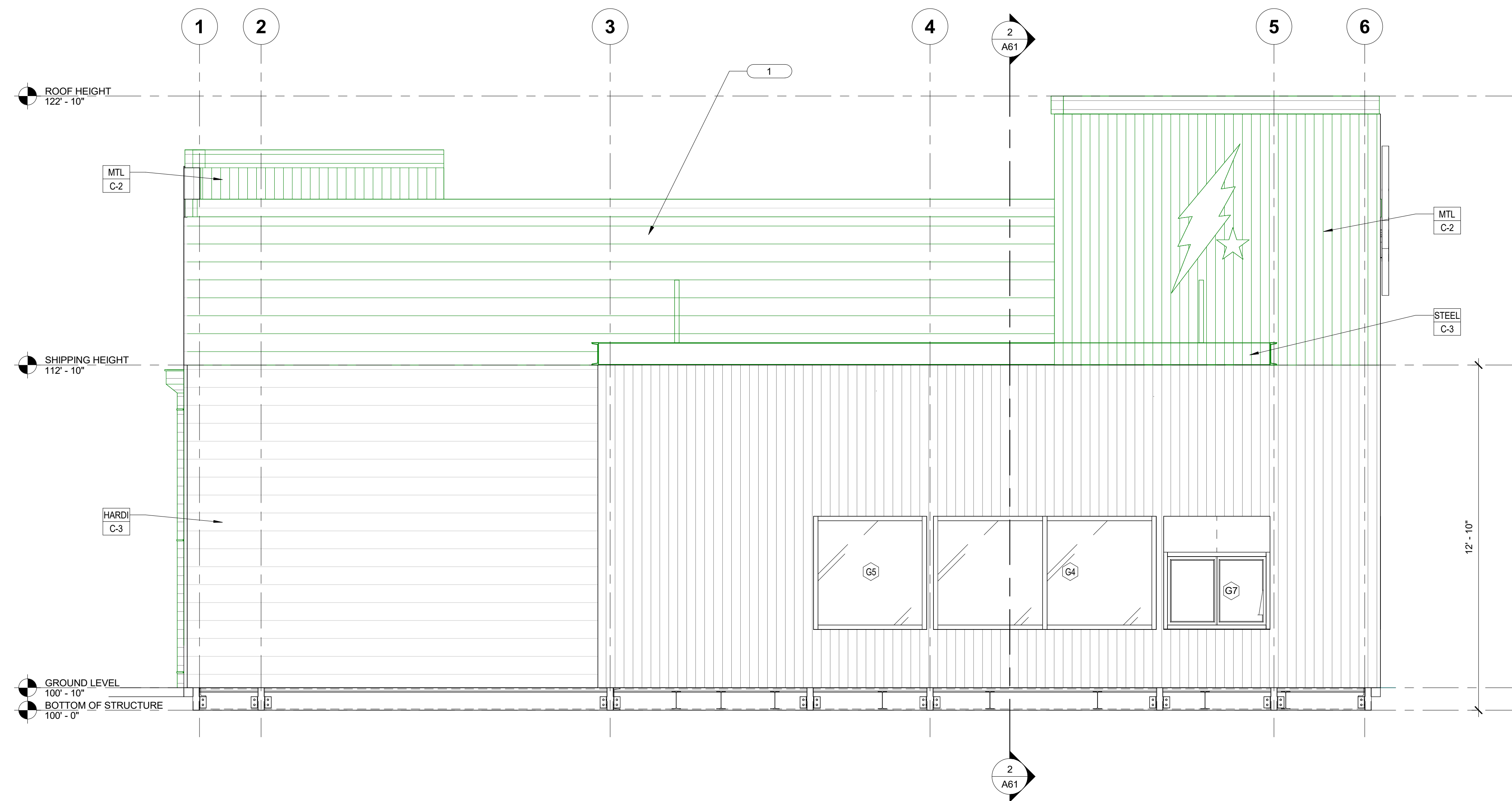
BLACK ROCK COFFEE BAR MODULAR
COUNTRY CLUB & SOUTHERN
1050 COUNTRY CLUB DR. MESA, AZ 85210
CSHOA

PERMIT SET

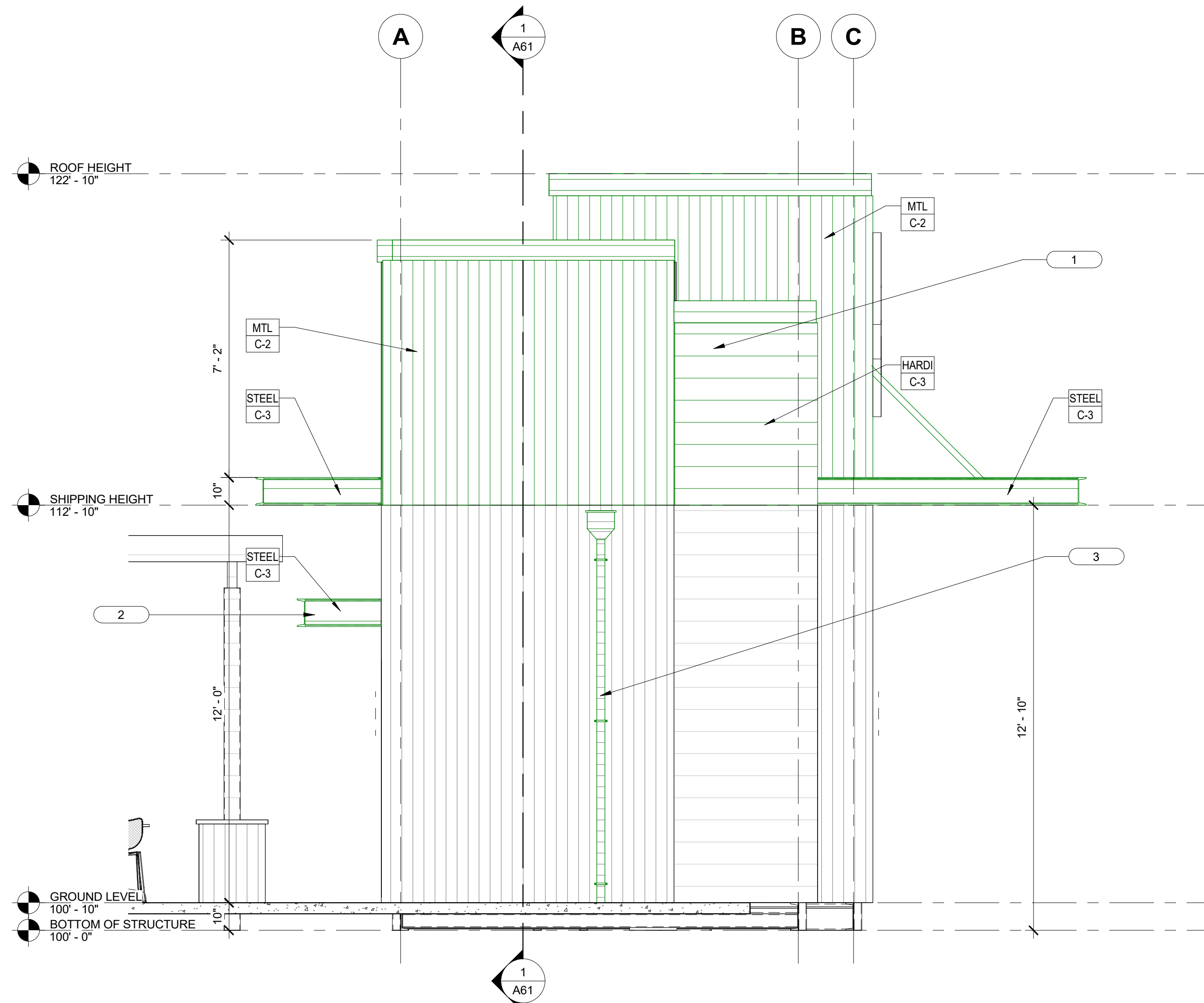
PROJECT 23319.009	DATE 09-20-24
DRAWN LMV	CHECKED JMO

SHEET TITLE
EXTERIOR ELEVATIONS

SHEET
A51
ORIGINAL SHEET SIZE
24" x 36"



1 Elevation 3 - a
3/8" = 1'-0"



2 Elevation 4 - a
3/8" = 1'-0"

MATERIALS & FINISH SCHEDULE:

X	MATERIAL	#	FINISH/COLOR
EFIS	DRYVIT W/ TERRAEO STONE FINISH	C-1	EVEREST BY DRYVIT
MTL	7.2 WESTERN RIB METAL SIDING	C-2	CORTEN AZP RAW (PAINTED)
HARDI	JAMES HARDIE "HARI PLANK" SMOOTH LAP SIDING WITH 8" EXPOSURE AND 3.5" HARDI TRIM AT CORNERS	C-3	PAINTED SHERWIN WILLIAMS SW 6258 TRICORN BLACK WITH SATIN FINISH
STEEL	STEEL I-BEAM		

GENERAL NOTES:

- FINISHES ARE ALSO REQUIRED AT PORTIONS OF UNDERSIDE, INSIDE FACE OF PARAPETS, AND SOFFITS EXPOSED TO PUBLIC VIEW.
- THE REFERENCE ELEVATION MARKED WITH REPRESENTS VERTICAL HEIGHTS RELATIVE TO INTERIOR FLOOR DATUM ASSUMED AT 100'-0", CW/ CIVIL FOR ACTUAL FLOOR ELEVATION.
- ALL MATERIAL SYMBOLS ARE FOR REPRESENTATION ONLY. CONTRACTOR IS RESPONSIBLE FOR DETERMINING PROPER COURSING, ETC.
- LOCATION FOR ADDRESS SIGNAGE TO BE INSTALLED AS REQUIRED AND APPROVED BY THE CITY OF CALDWELL, ID.
- ALL ROOFTOP EQUIPMENT TO BE SCREENED BY WALLS OR EQUIPMENT SCREENS.
- COORDINATE LOCATION OF KNOXBOX WITH FIRE MARSHALL.
- PROVIDE AND INSTALL SEALANT AS NEEDED AT ALL MATERIAL/SURFACE/FINISH JOINTS TO CREATE WEATHER TIGHT SEAL. EXTERIOR CAULK COLOR TO MATCH ADJACENT MATERIAL COLOR.
- PROVIDE CONTINUOUS SEALANT AROUND ALL PENETRATIONS, ELECTRICAL LIGHTING, AND OTHER SURFACE MOUNTED COMPONENTS.

SHEET NOTES:

- EVERYTHING ABOVE 12'-10" SHALL BE INSTALLED ON SITE BY FACTORY
- AWNINGS TO BE INSTALLED ON SITE BY FACTORY
- SCUPPER AND DOWNSPOUT TO BE INSTALLED ON SITE BY FACTORY.

SCOPE DESIGNATION LEGEND

- BLUE LINES AND NOTES: WORK TO BE PERFORMED ON SITE BY GENERAL CONTRACTOR (GC) AND INSPECTED IN FIELD BY LOCAL AHJ
- BLACK LINES AND NOTES: WORK TO BE PERFORMED IN FACTORY AND INSPECTED AT FACTORY BY THIRD PARTY INSPECTION AS REQUIRED BY AHJ
- GREEN LINES AND NOTES: WORK TO BE PERFORMED ON SITE BY FACTORY AND INSPECTED IN FIELD BY LOCAL AHJ

200 BROAD STREET
BOISE, IDAHO
PHONE: 208-343-4635 • FAX: 208-343-1858
PROPERTY OF THE ARCHITECT/ENGINEER/INTERIOR DESIGNER AND SHALL REMAIN THE PROPERTY OF THE ARCHITECT/ENGINEER/INTERIOR DESIGNER. THESE DRAWINGS AND SPECIFICATIONS SHALL NOT BE REPRODUCED, COPIED, OR TRANSMITTED IN ANY FORM OR BY ANY MEANS, ELECTRONIC OR MECHANICAL, INCLUDING PHOTOCOPYING, RECORDING, OR BY ANY INFORMATION STORAGE AND RETRIEVAL SYSTEM, WITHOUT THE WRITTEN CONSENT OF CSHQA OR ITS AFFILIATES.
Copyright © 2024

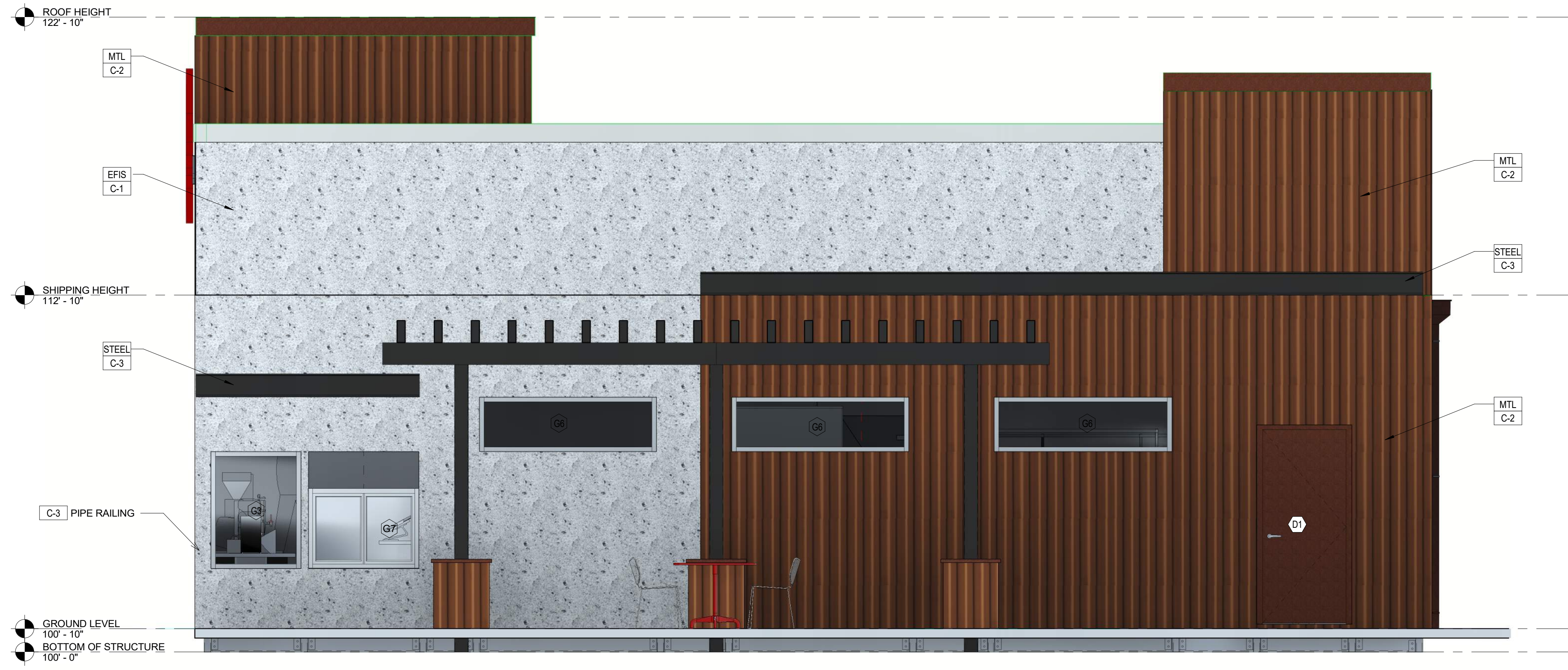
BLACK ROCK COFFEE BAR MODULAR
COUNTRY CLUB & SOUTHERN
1050 COUNTRY CLUB DR. MESA, AZ 85210
200 BROAD STREET
BOISE, ID 83702
(208) 343-4635 • FAX (208) 343-1858
http://www.cshqa.com

PERMIT SET

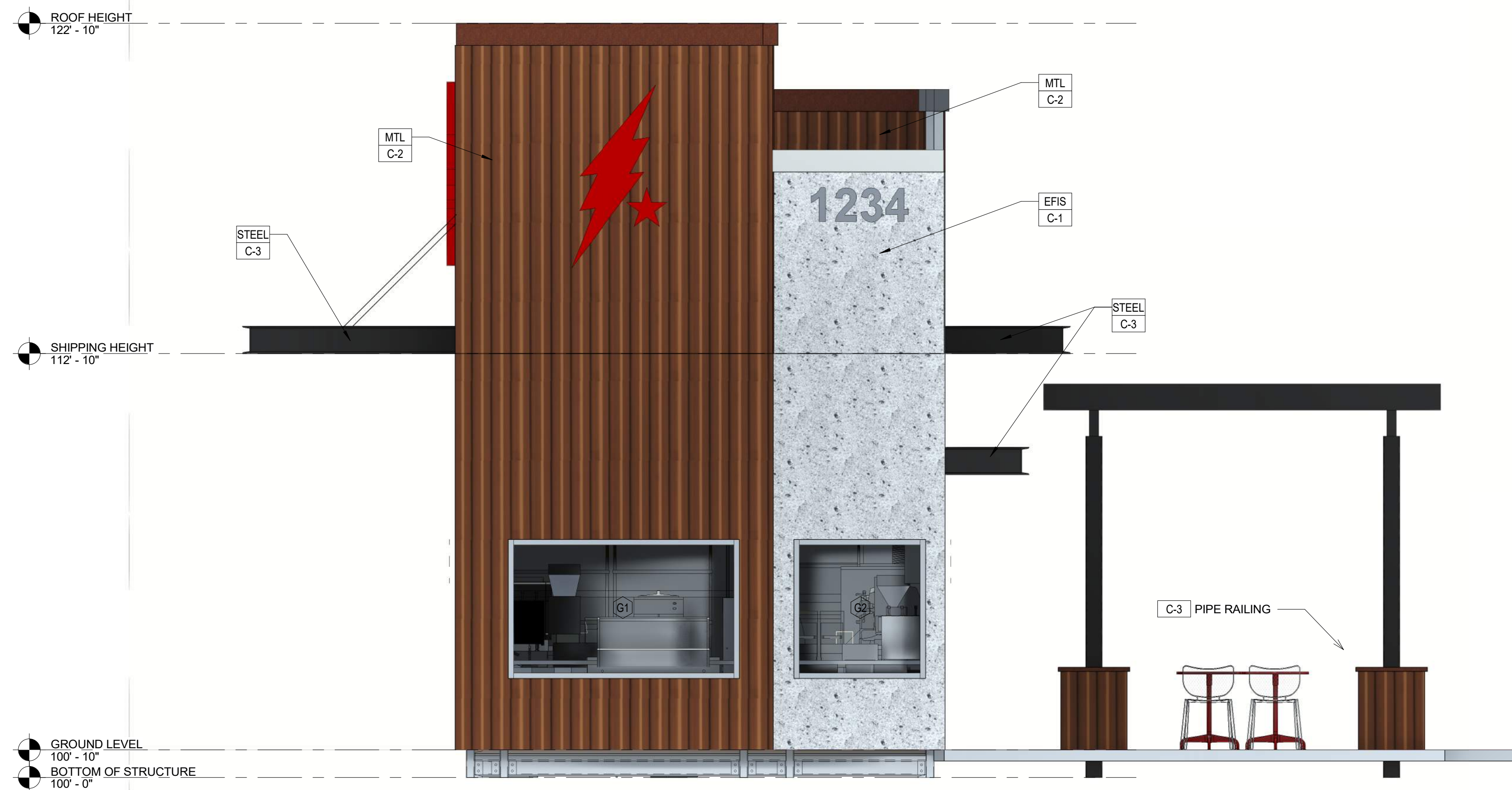
PROJECT 23319.009	DATE 09-20-24
DRAWN LMV	CHECKED JMO

SHEET TITLE
EXTERIOR ELEVATIONS

SHEET
A52
ORIGINAL SHEET SIZE
24" x 36"



1 NORTH ELEVATION
3/8" = 1'-0"



2 EAST ELEVATION
3/8" = 1'-0"

MATERIALS & FINISH SCHEDULE:

X	MATERIAL	#	FINISH/COLOR
EFIS	DRYVIT W/ TERRAEO STONE FINISH	C-1	EVEREST BY DRYVIT
MTL	7.2 WESTERN RIB METAL SIDING	C-2	CORTEN AZP RAW (PAINTED)
HARDI	JAMES HARDIE "HARI PLANK" SMOOTH LAP SIDING WITH 8" EXPOSURE AND 3.5" HARDI TRIM AT CORNERS	C-3	PAINTED SHERWIN WILLIAMS SW 6258 TRICORN BLACK WITH SATIN FINISH
STEEL	STEEL I-BEAM		

GENERAL NOTES:

- FINISHES ARE ALSO REQUIRED AT PORTIONS OF UNDERSIDE, INSIDE FACE OF PARAPETS, AND SOFFITS EXPOSED TO PUBLIC VIEW.
- THE REFERENCE ELEVATION MARKED WITH REPRESENTS VERTICAL HEIGHTS RELATIVE TO INTERIOR FLOOR DATUM ASSUMED AT 100'-0", CW/ CIVIL FOR ACTUAL FLOOR ELEVATION.
- ALL MATERIAL SYMBOLS ARE FOR REPRESENTATION ONLY. CONTRACTOR IS RESPONSIBLE FOR DETERMINING PROPER COURSING, ETC.
- LOCATION FOR ADDRESS SIGNAGE TO BE INSTALLED AS REQUIRED AND APPROVED BY THE CITY OF CALDWELL, ID.
- ALL ROOFTOP EQUIPMENT TO BE SCREENED BY WALLS OR EQUIPMENT SCREENS.
- COORDINATE LOCATION OF KNOXBOX WITH FIRE MARSHALL.
- PROVIDE AND INSTALL SEALANT AS NEEDED AT ALL MATERIAL/SURFACE/FINISH JOINTS TO CREATE WEATHER TIGHT SEAL. EXTERIOR CAULK COLOR TO MATCH ADJACENT MATERIAL COLOR.
- PROVIDE CONTINUOUS SEALANT AROUND ALL PENETRATIONS, ELECTRICAL LIGHTING, AND OTHER SURFACE MOUNTED COMPONENTS.

MATERIAL	WEST		SOUTH		EAST		NORTH		TOTAL	
	SF	%	SF	%	SF	%	SF	%	SF	%
TOTAL ELEVATION AREA	325	100%	872	100%	325	100%	872	100%	2394	100%
GLAZED DOORS AND WINDOWS	0	0.0%	0	0.0%	46	14.2%	68	7.8%	114	4.8%
NON-GLAZED DOORS AND WINDOWS	0	0.0%	69	7.9%	0	0.0%	25	2.9%	94	3.9%
TOTAL (GLAZED/NON-GLAZED DOORS AND WINDOWS)	0	0.0%	69	7.9%	46	14.2%	93	10.7%	208	8.7%
EIFS (C-1 EVEREST)	0	0.0%	0	0.0%	74	22.8%	346	39.7%	420	17.5%
WESTERN RIB (C-2 CORTEN AZP RAW)	223	68.6%	398	45.6%	182	56.0%	368	42.2%	1171	48.9%
JAMES HARDIE LAP SIDING (C-3 BLACK)	76	23.4%	348	39.9%	0	0.0%	0	0.0%	424	17.7%
TOTAL (WALL MATERIALS)	299	92.0%	746	85.6%	256	78.8%	714	81.9%	2015	84.2%
PAINTED METAL TRIM (WHITE)	0	0.0%	0	0.0%	3	0.9%	23	2.6%	26	1.1%
PAINTED METAL TRIM (BROWN)	12	3.7%	15	1.7%	10	3.1%	14	1.6%	51	2.1%
PAINTED METAL TRIM (BLACK)	14	4.3%	42	4.8%	10	3.1%	28	3.2%	94	3.9%
TOTAL (PAINTED METAL TRIM)	26	8.0%	57	6.5%	23	7.1%	65	7.5%	171	7.1%

200 BROAD STREET
BOISE, IDAHO
PHONE: 208-343-4635 • FAX: 208-343-1858
WWW.CSHQA.COM

200 BROAD STREET
BOISE, ID 83702
PHONE: (208) 343-4635 • FAX: (208) 343-1858
http://www.cshqa.com

BLACK ROCK COFFEE BAR MODULAR
COUNTRY CLUB & SOUTHERN
1050 COUNTRY CLUB DR. MESA, AZ 85210
CSHQA

PERMIT SET

PROJECT 23319.009	DATE 09-20-24
DRAWN LMV	CHECKED JMO

REVISED

SHEET TITLE
RENDERED ELEVATIONS

SHEET
A53
ORIGINAL SHEET SIZE
24" x 36"



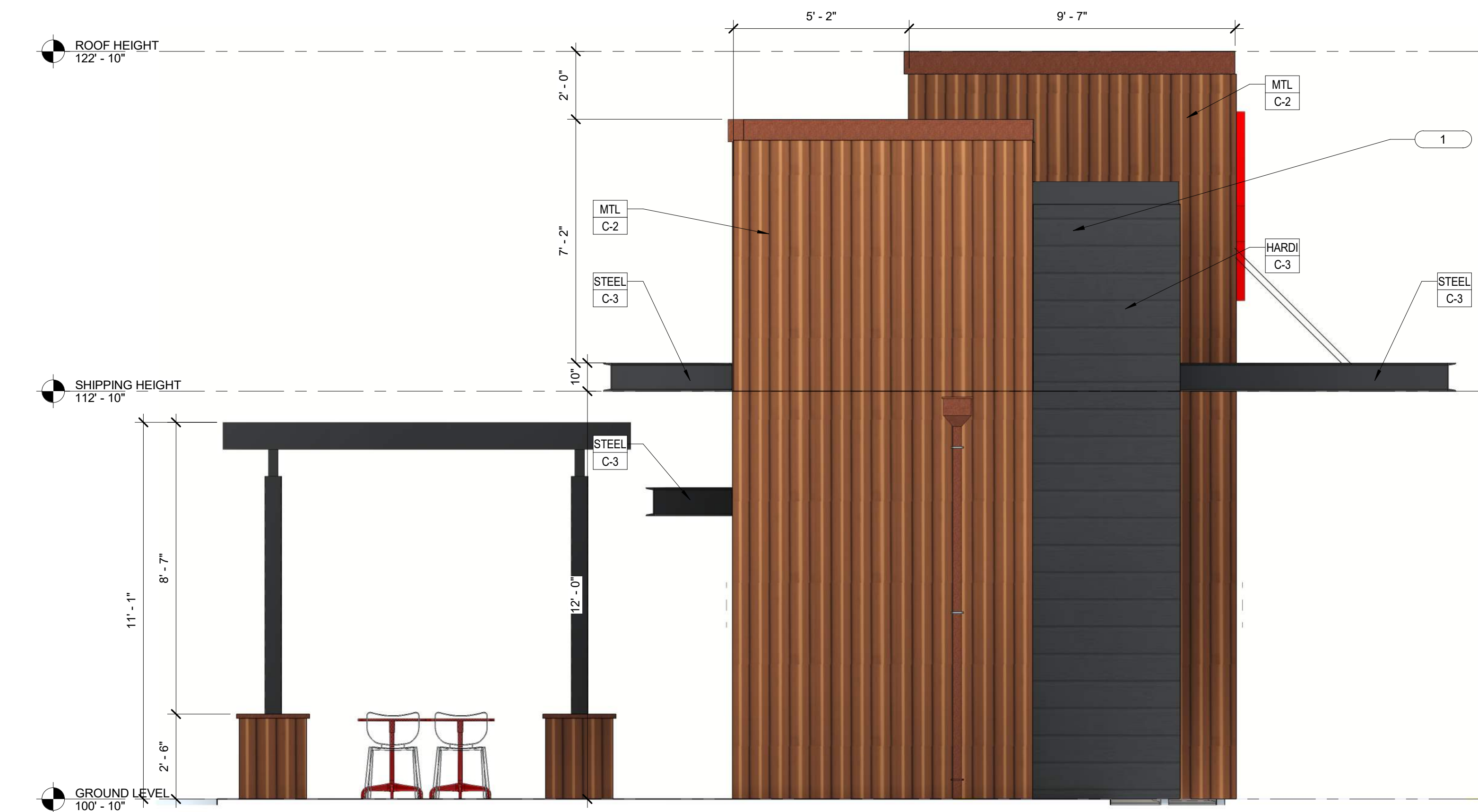
1 SOUTH ELEVATION
3/8" = 1'-0"

MATERIALS & FINISH SCHEDULE:

X	MATERIAL	#	FINISH/COLOR
EIFS	DRYVIT W/ TERRAEO STONE FINISH	C-1	EVEREST BY DRYVIT
MTL	7.2 WESTERN RIB METAL SIDING	C-2	CORTEN AZP RAW (PAINTED)
HARDI	JAMES HARDIE "HARI PLANK" SMOOTH LAP SIDING WITH 8" EXPOSURE AND 3.5" HARDI TRIM AT CORNERS	C-3	PAINTED SHERWIN WILLIAMS SW 6258 TRICORN BLACK WITH SATIN FINISH
STEEL	STEEL I-BEAM		

GENERAL NOTES:

- FINISHES ARE ALSO REQUIRED AT PORTIONS OF UNDERSIDE, INSIDE FACE OF PARAPETS, AND SOFFITS EXPOSED TO PUBLIC VIEW.
- THE REFERENCE ELEVATION MARKED WITH REPRESENTS VERTICAL HEIGHTS RELATIVE TO INTERIOR FLOOR DATUM ASSUMED AT 100'-0", CW/ CIVIL FOR ACTUAL FLOOR ELEVATION.
- ALL MATERIAL SYMBOLS ARE FOR REPRESENTATION ONLY. CONTRACTOR IS RESPONSIBLE FOR DETERMINING PROPER COURSING, ETC.
- LOCATION FOR ADDRESS SIGNAGE TO BE INSTALLED AS REQUIRED AND APPROVED BY THE CITY OF CALDWELL, ID.
- ALL ROOFTOP EQUIPMENT TO BE SCREENED BY WALLS OR EQUIPMENT SCREENS.
- COORDINATE LOCATION OF KNOXBOX WITH FIRE MARSHALL.
- PROVIDE AND INSTALL SEALANT AS NEEDED AT ALL MATERIAL/SURFACE/FINISH JOINTS TO CREATE WEATHER TIGHT SEAL. EXTERIOR CAULK COLOR TO MATCH ADJACENT MATERIAL COLOR.
- PROVIDE CONTINUOUS SEALANT AROUND ALL PENETRATIONS, ELECTRICAL LIGHTING, AND OTHER SURFACE MOUNTED COMPONENTS.



2 WEST ELEVATION
3/8" = 1'-0"

MATERIAL	MATERIAL CALCULATION									
	WEST		SOUTH		EAST		NORTH		TOTAL	
	SF	%	SF	%	SF	%	SF	%	SF	%
TOTAL ELEVATION AREA	325	100%	872	100%	325	100%	872	100%	2394	100%
GLAZED DOORS AND WINDOWS	0	0.0%	0	0.0%	46	14.2%	68	7.8%	114	4.8%
NON-GLAZED DOORS AND WINDOWS	0	0.0%	69	7.9%	0	0.0%	25	2.9%	94	3.9%
TOTAL (GLAZED/NON-GLAZED DOORS AND WINDOWS)	0	0.0%	69	7.9%	46	14.2%	93	10.7%	208	8.7%
EIFS (C-1 EVEREST)	0	0.0%	0	0.0%	74	22.8%	346	39.7%	420	17.5%
WESTERN RIB (C-2 CORTEN AZP RAW)	223	68.6%	398	45.6%	182	56.0%	368	42.2%	1171	48.9%
JAMES HARDIE LAP SIDING(C-3 BLACK)	76	23.4%	348	39.9%	0	0.0%	0	0.0%	424	17.7%
TOTAL (WALL MATERIALS)	299	92.0%	746	85.6%	256	78.8%	714	81.9%	2015	84.2%
PAINTED METAL TRIM (WHITE)	0	0.0%	0	0.0%	3	0.9%	23	2.6%	26	1.1%
PAINTED METAL TRIM (BROWN)	12	3.7%	15	1.7%	10	3.1%	14	1.6%	51	2.1%
PAINTED METAL TRIM (BLACK)	14	4.3%	42	4.8%	10	3.1%	28	3.2%	94	3.9%
TOTAL (PAINTED METAL TRIM)	26	8.0%	57	6.5%	23	7.1%	65	7.5%	171	7.1%

200 BROAD STREET
BOISE, IDAHO
PHONE: 208-343-4635 • FAX: 208-343-1858
WWW.CSHQA.COM

BLACK ROCK COFFEE BAR MODULAR
COUNTRY CLUB & SOUTHERN
1050 COUNTRY CLUB DR. MESA, AZ 85210

200 BROAD STREET
BOISE, IDAHO
PHONE: 208-343-4635 • FAX: 208-343-1858
WWW.CSHQA.COM

CSHQA

PERMIT SET

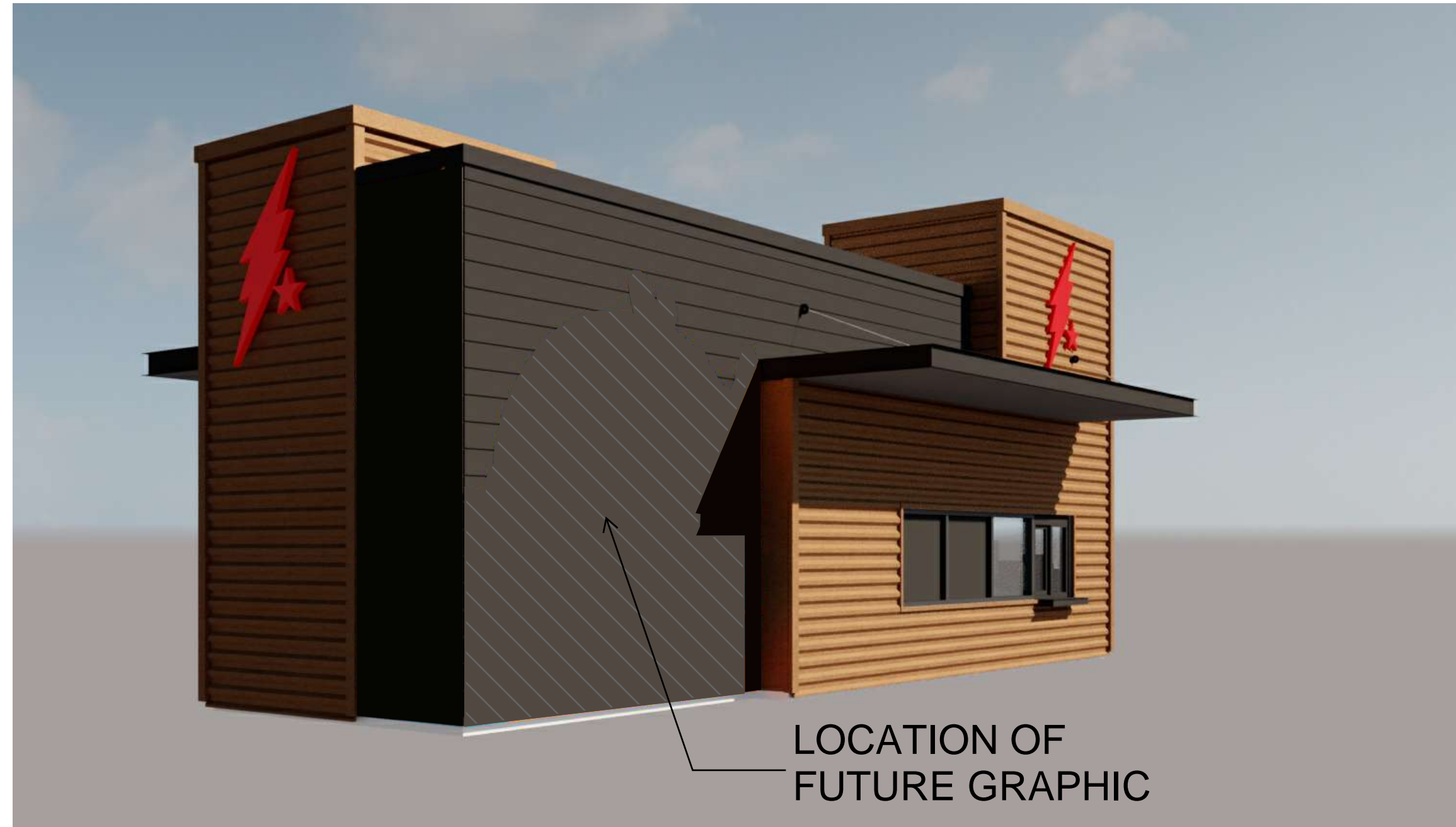
PROJECT 23319.009	DATE 09-20-24
DRAWN LMV	CHECKED JMO

REVISED

SHEET TITLE
RENDERED ELEVATIONS

SHEET

A54
ORIGINAL SHEET SIZE
24" x 36"



LOCATION OF FUTURE GRAPHIC



200 BROAD STREET
BOISE, IDAHO
PHONE: 208-343-4635 • FAX: 208-343-1858
PROPERTY OF THE ARCHITECT/ENGINEER. THESE DRAWINGS AND SPECIFICATIONS SHALL BE THE PROPERTY OF CSHQA AND SHALL REMAIN THE PROPERTY OF CSHQA. NO PART OF THESE DRAWINGS OR SPECIFICATIONS SHALL BE REPRODUCED OR TRANSMITTED IN ANY FORM OR BY ANY MEANS, ELECTRONIC OR MECHANICAL, INCLUDING PHOTOCOPYING, RECORDING, OR BY ANY INFORMATION STORAGE AND RETRIEVAL SYSTEM, WITHOUT THE WRITTEN CONSENT OF CSHQA OR ITS AFFILIATES.
Copyright © 2024

BLACK ROCK COFFEE BAR MODULAR
COUNTRY CLUB & SOUTHERN
1050 COUNTRY CLUB DR. MESA, AZ 85210
200 BROAD STREET
BOISE, ID 83702
(208) 343-4635 • FAX (208) 343-1858
<http://www.cshqa.com>

CSHQA

PERMIT SET

PROJECT 23319.009	DATE 09-20-24
DRAWN LMV	CHECKED JMO

REVISED

SHEET TITLE
RENDERINGS

SHEET
A62
ORIGINAL SHEET SIZE
24" x 36"