



Design Review Board



DRB25-00623

NTT PH10 Pecos



Request

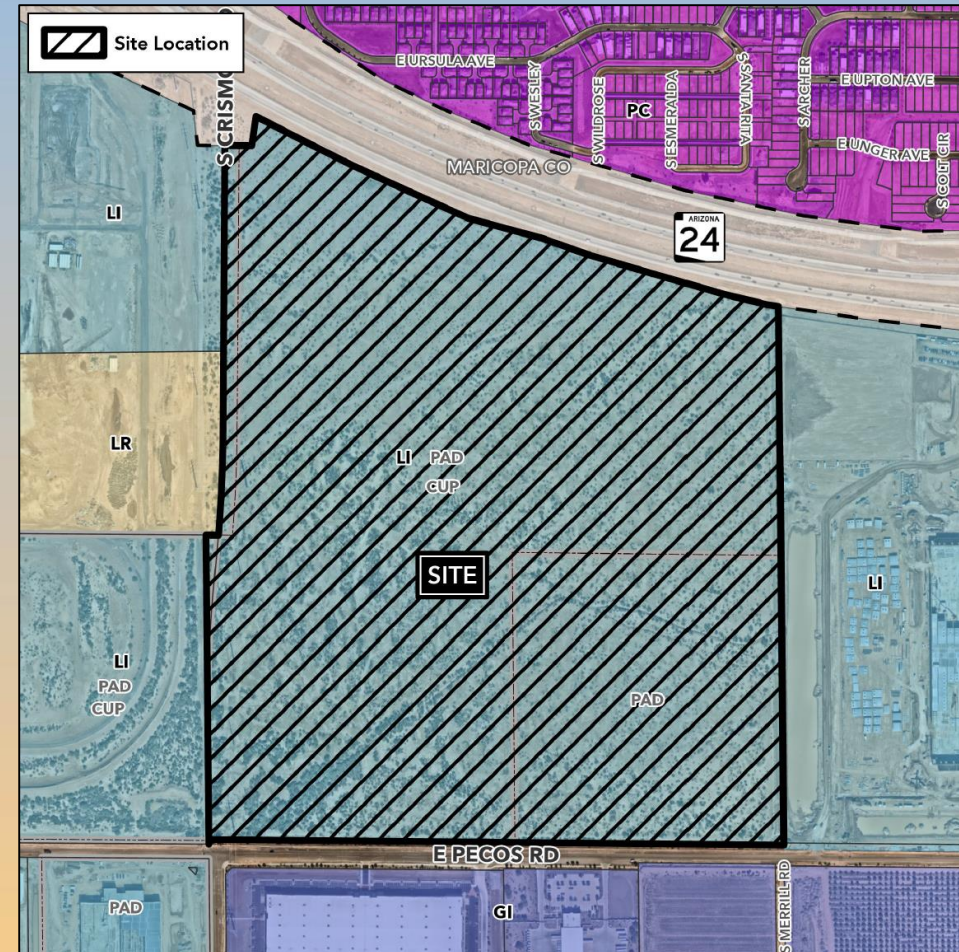
- Design Review
- To allow for a Data Center Campus





Location

- North of Pecos Road
- East of Crismon Road alignment





Site Photo



Looking north from Pecos
Road



Site Photo

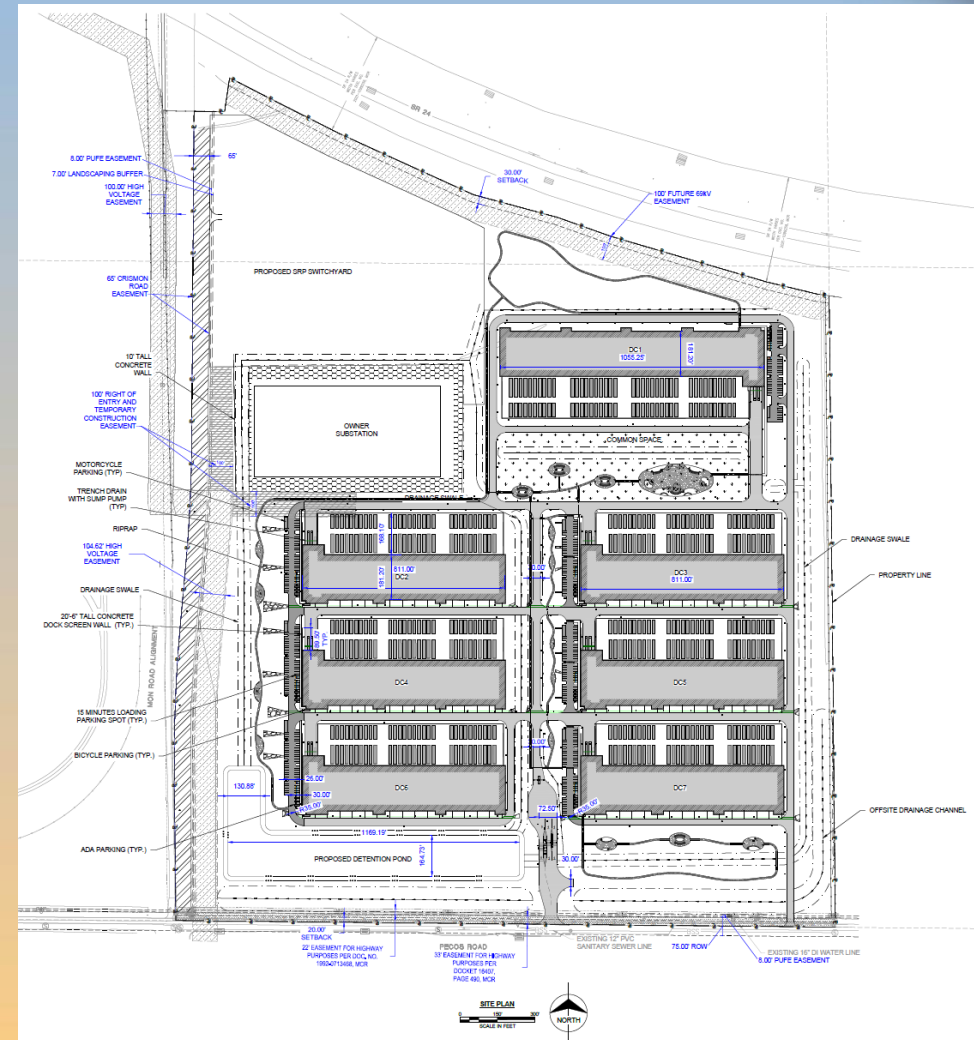


Looking south from SR 24



Site Plan

- Access will only be provided from Pecos Road
- 7 total buildings on site
- 2,257,561 square feet total
- Two Substations; one private, one owned by SRP
- Includes a walking path





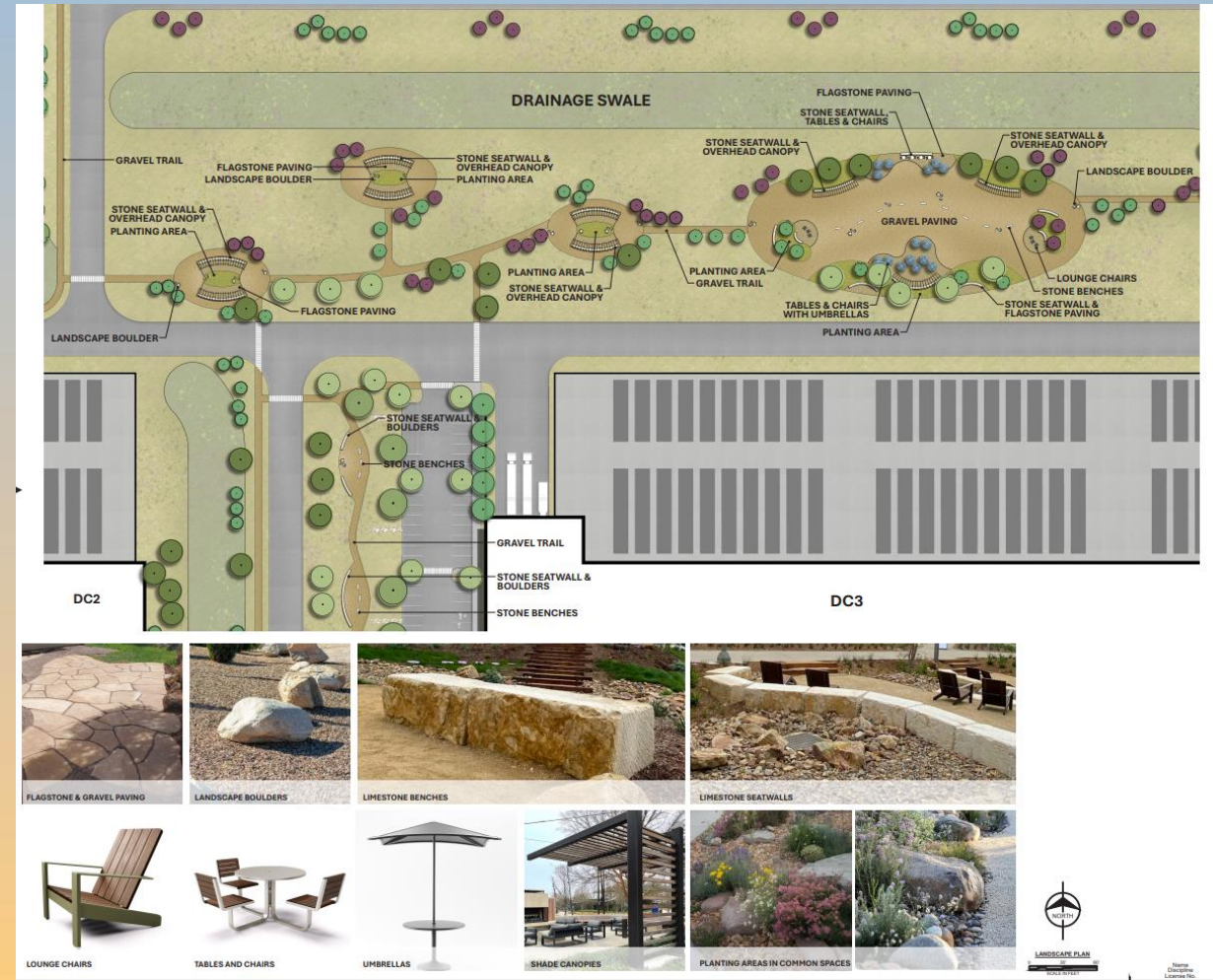
Landscape Plan



BOTANICAL NAME	COMMON NAME	SIZE	CONTAINER	REMARKS
CONIFEROUS TREES				
<i>Cupressus arizonica</i> 'Blue Ice'	Blue Ice Arizona Cypress	5' Ht.	36" Box	
<i>Cupressus sempervirens</i> 'Glaucia'	Blue Italian Cypress	6' Ht.	36" Box	
DECIDUOUS TREES				
<i>Acacia willardiana</i>	Palo Blanco	2" Cal.	24" Box	
<i>Cercis canadensis</i> 'Texas Redbud'	Texas Redbud	6' Ht.	24" Box	Multi-trunked
<i>Chilopsis linearis</i> 'Burgundy Lace'	Burgundy Lace Desert Willow	2" Cal.	24" Box	Multi-trunked
<i>Chilopsis linearis</i> 'MSVNLupar'	Desert Willow	6' Ht.	24" Box	Multi-trunked
<i>Lagerstroemia indica</i> 'Whit II'	Dynamite® Crape Myrtle	20 gal.		Clump
<i>Parkinsonia florida</i>	Blue Palo Verde	2" Cal.	36" Box	Multi-trunked
<i>Parkinsonia</i> x 'Desert Museum'	Desert Museum Palo Verde	6' Ht.	36" Box	Multi-trunked
<i>Pistacia chinensis</i> 'Red Push'	Red Push Chinese Pistache	2" Cal.	36" Box	
<i>Prosopis chilensis</i> 'Thomless'	Thornless Chilean Mesquite	2" Cal.	36" Box	
EVERGREEN TREES				
<i>Acacia aneura</i>	Mulga	2" Cal.	24" Box	
<i>Acacia salicina</i>	Willow Acacia	2" Cal.	24" Box	
<i>Ficus nitida</i>	Weeping Fig	2" Cal.		
<i>Olea europaea</i> 'Wilsoni'	Wilson Olive	2" Cal.		
PALM TREES				
<i>Bismarckia nobilis</i>	Bismarck Palm	10' Ht.	48" Box	Clump
<i>Chamaerops humilis</i>	Mediterranean Fan Palm	10' Ht.	48" Box	
<i>Phoenix canariensis</i>	Canary Island Date Palm	10' Ht.	48" Box	
<i>Phoenix dactylifera</i>	Date Palm	10' Ht.	48" Box	
<i>Washingtonia robusta</i>	Mexican Fan Palm	10' Ht.	48" Box	
SHRUBS				
<i>Calliandra eriophylla</i>	Fairy Duster	5 gal.		
<i>Carissa macrocarpa</i> 'Boxwood Beauty'	Boxwood Beauty Natal Plum	5 gal.		
<i>Encelia farinosa</i>	Brittlebush	5 gal.		
<i>Eremophila hydrophana</i> 'Blue Bells'	Blue Bells Emu Bush	5 gal.		
<i>Eremophila maculata</i> 'Valentine'	Valentine Spotted Emu Bush	5 gal.		
<i>Larrea tridentata</i>	Creosote Bush	5 gal.		
<i>Leucophyllum frutescens</i> 'Green Cloud'	Green Cloud Texas Sage	5 gal.		
<i>Leucophyllum</i> x 'Heavenly Cloud'	Heavenly Cloud Barometerbush	5 gal.		
<i>Myrtus communis</i> 'Boetica'	Boetica Twisted Common Myrtle	5 gal.		
<i>Photinia x fraseri</i>	Red Tip Photinia	5 gal.		
<i>Rhaphiolepis indica</i> 'Ballerina'	Ballerina Indian Hawthorn	5 gal.		
<i>Rhaphiolepis indica</i> 'Pink Lady'	Pink Lady Indian Hawthorn Standard	5 gal.		
<i>Salvia rosmarinus</i> 'Tuscan Blue'	Tuscan Blue Rosemary	5 gal.		
<i>Simmondsia chinensis</i>	Jojiba	5 gal.		
<i>Sophora secundiflora</i>	Texas Mountain Laurel	5 gal.		
FERNS				
<i>Asparagus densiflorus</i> 'Myers'	Myers Asparagus Fern	1 gal.		
GRASSES				
<i>Muhlenbergia capillaris</i> 'Lencal'	Regal Mist® Pink Muhly Grass	1 gal.		
<i>Muhlenbergia lindheimeri</i> 'Lent'	Autumn Glow™ Lindheimer's Muhly	1 gal.		
<i>Muhlenbergia rigens</i>	Deer Grass	1 gal.		
PERENNIALS				
<i>Gaura lindheimeri</i> 'Rosy Jane'	Rosy Jane Gaura	1 gal.		
<i>Salvia greggii</i> 'Raspberry'	Raspberry Autumn Sage	1 gal.		
<i>Zantedeschia elliptica</i>	Golden Calla	Bulb		
SUCCULENTS				
<i>Agave americana</i>	Century Plant	5 gal.		
<i>Agave parryi</i> 'truncata'	Artichoke Parry's Agave	5 gal.		
<i>Agave shawii</i> x 'attenuata' 'Blue Flame'	Blue Flame Agave	5 gal.		
<i>Dasylistron quadrangulatum</i>	Mexican Grass Tree	5 gal.		
<i>Hesperaloe parviflora</i> 'Desert Flamenco'	Desert Flamenco Red Yucca	5 gal.		
<i>Hesperaloe parviflora</i> 'Perla'	Brakelights® Red Yucca	5 gal.		
<i>Nolina microcarpa</i>	Sacahuista	5 gal.		

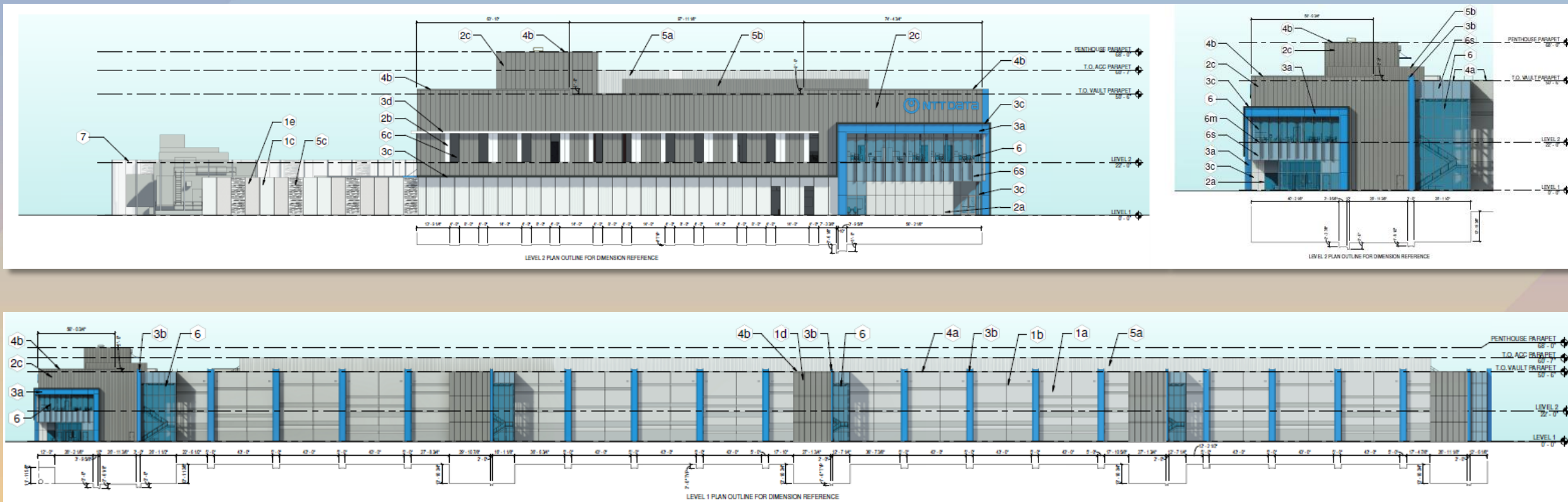


Landscape Plan - Details



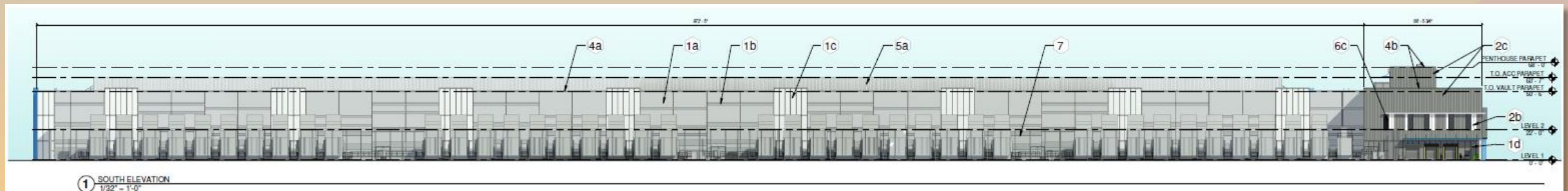


Building Elevations – Building 1



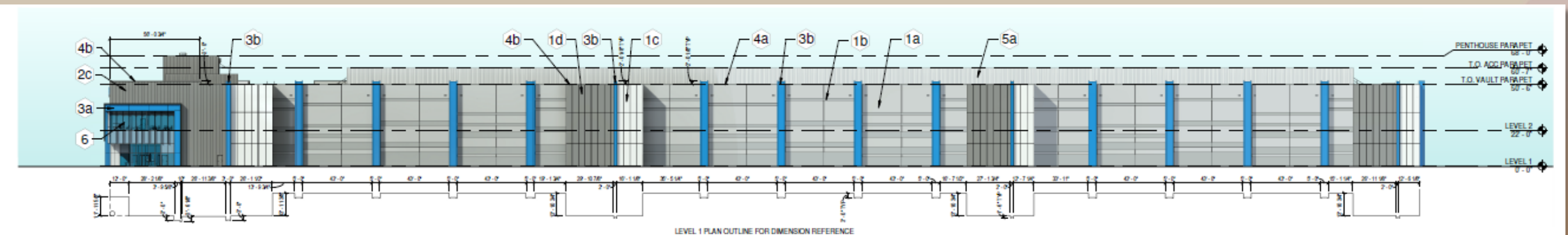
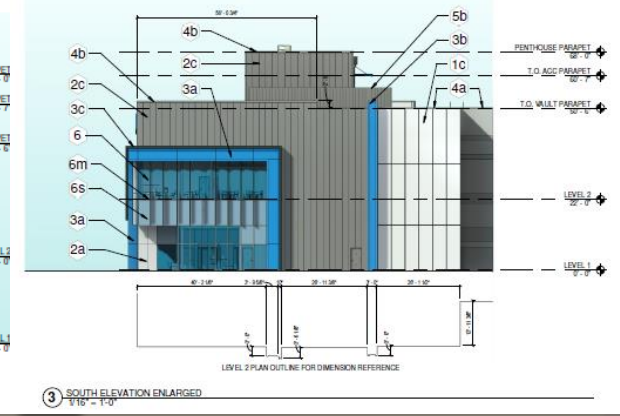
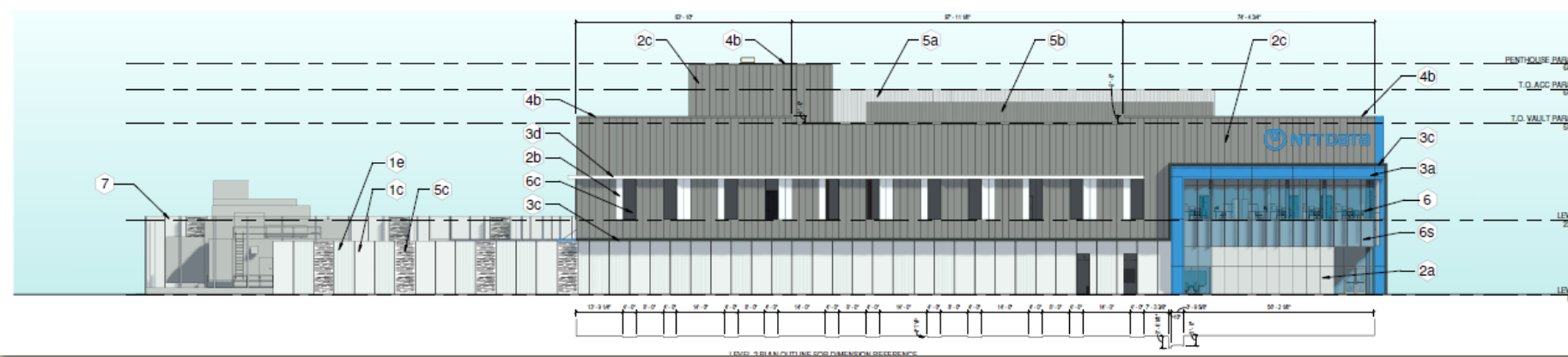


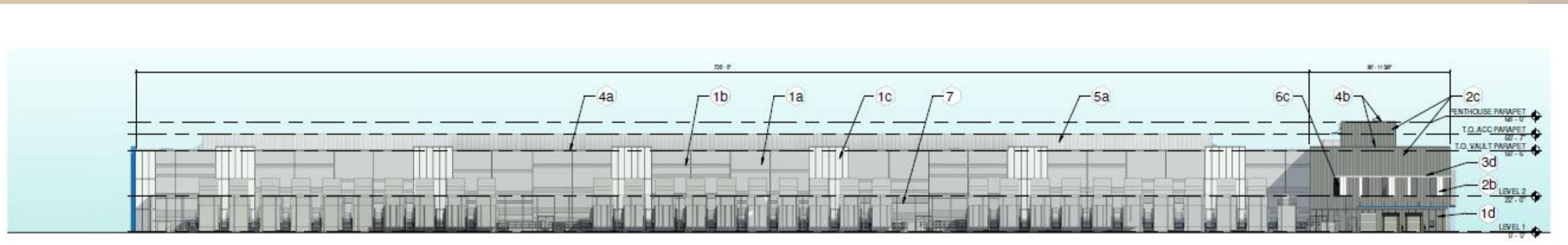
Building Elevations – Building 1





Building Elevations – Building 2-7







Colors and Materials

EXTERIOR ELEVATIONS - MATERIAL LEGEND





PAINTED TILT-UP CONCRETE

- 1a  SILVER POLISH (DE6374)
- 1b  WALRUS (DE6368)
- 1c  IGLOO (DEW379)
- 1d  BOAT ANCHOR (DE6377)
- 1e  IGLOO (DEW379)
FORMLINER - RECKLI, 2/241 HAWAII



INSULATED METAL WALL PANELS

- 2a  SILVER POLISH (DE6374)
- 2b  IGLOO (DEW379)
- 2c  BOAT ANCHOR (DE6377)


METAL COMPOSITE MATERIAL PANEL

- 3a  NTT BLUE PANTONE 285C
- 3b  NTT BLUE PANTONE 285C
VERTICAL FIN / DOWNSPOUT ENCLOSURE
- 3c  RICH BLACK CENTRIA - 9916
EYEBROW
- 3d  IGLOO (DEW379)
EYEBROW






METAL COPING

- 4a  WALRUS (DE6368)
- 4b  BOAT ANCHOR (DE6377)



FORMED METAL PANEL SCREEN WALL

- 5a  SILVER POLISH (DE6374)
- 5b  BOAT ANCHOR (DE6377)
- 5c  IGLOO (DEW379)
PRODUCT - ARTISAN
PANELS INC., 65 - MATRIX
- 5d  SILVER POLISH (DE6374)
PRODUCT - ARTISAN
PANELS INC., 65 - MATRIX

INSULATED GLASS UNIT CURTAIN WALL SYSTEM AND WINDOWS

- 6  BLUE GLASS UNIT
- 6f  RICH BLACK CENTRIA - 9916
MULLION FRAMING
- 6s  BLUE SPANDREL
GLASS UNIT
- 6m  CLEAR ANODIZED
MULLION FRAMING
- 6c  CLEAR GLASS UNIT

EQUIPMENT YARD WALL

- 7  MINI CHAIN LINK
SECURITY FENCE
-  GALVANIZED POSTS



Alternative Compliance

- ✓ Materials. To reduce the apparent massing and scale of buildings, facades shall incorporate at least 3 different and distinct materials.
- ✓ Materials. No more than 50% of the total façade may be covered with one (1) single material.



Findings

Staff is seeking your review and recommendation on the following:

- ✓ Proposed building elevations and landscape plan
- ✓ Proposed alternative compliance

Staff welcomes any feedback



Design Review Board