



Liquor License Map

City of Mesa Tax & Licensing

Requesting Approval:



SHERATON MESA HOTEL AT WRIGLEYVILLE WEST

860 N RIVERVIEW

License Type:

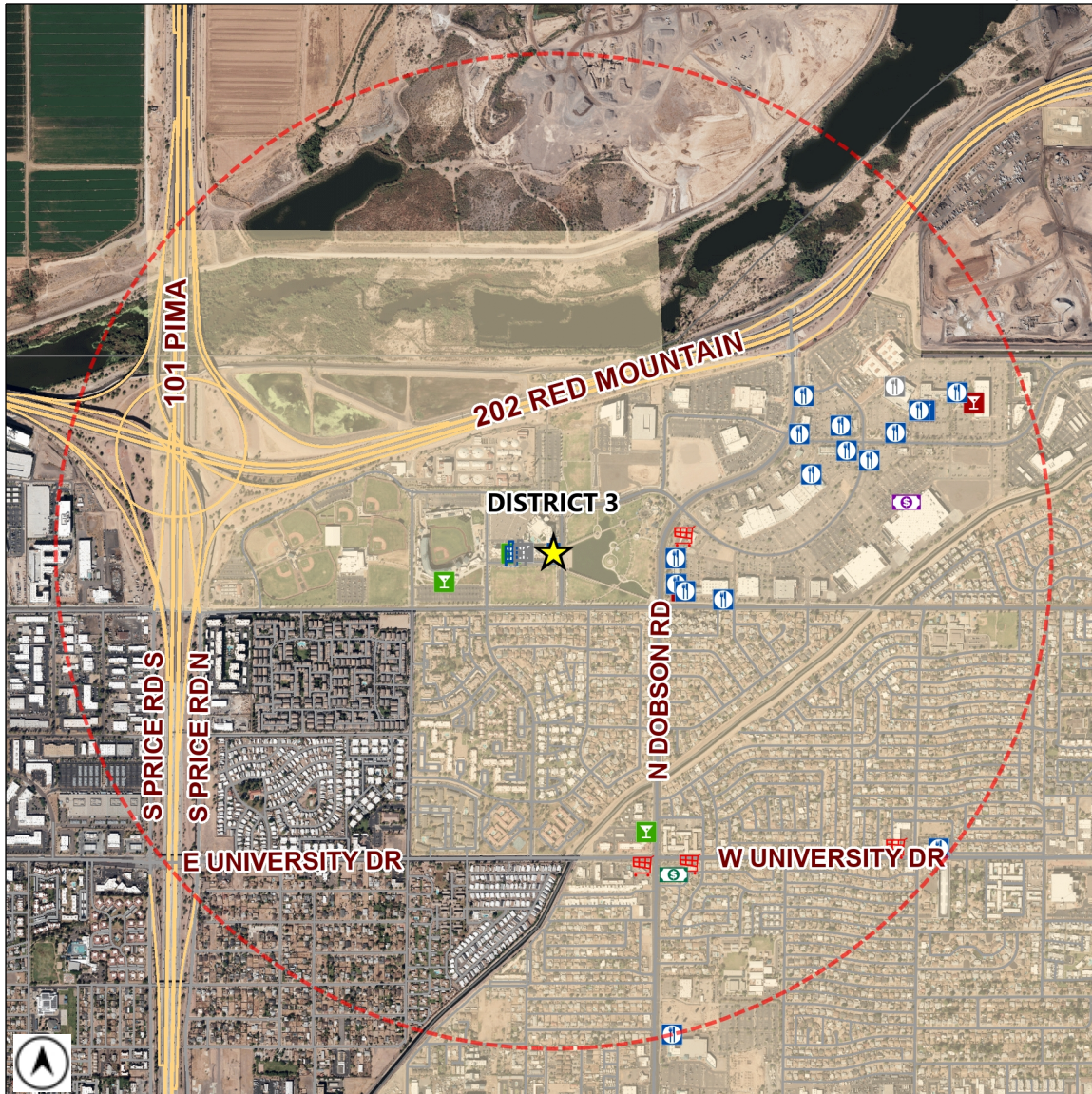
HOTEL-MOTEL (PEND)

License Number:

LICA25-19937

Estimated Population (1 Mile): **10962**

Source: MAG ACS 2013-2017 5 year data



	BAR	3		CLUB	0		HOTEL-MOTEL	2		MICRO-BREWERY	0
	BAR (PEND)	1		CLUB (PEND)	0		HOTEL-MOTEL (PEND)	1		MICRO-BREWERY (PEND)	0
	BEER / WINE BAR	3		CONVEYANCE	0		IN-STATE PRODUCER	0		RESTAURANT	15
	BEER / WINE BAR (PEND)	1		CONVEYANCE (PEND)	0		IN-STATE PRODUCER (PEND)	0		RESTAURANT (PEND)	1
	BEER / WINE STORE	4		DOMESTIC FARM WINERY	0		LIQUOR STORE	1		WHOLESALE	0
	BEER / WINE STORE (PEND)	0		DOMESTIC FARM WINERY (PEND)	0		LIQUOR STORE (PEND)	0		WHOLESALE (PEND)	0
	BEER / WINE STORE / SAMPLING	0		GOVERNMENT	0		LIQUOR STORE / SAMPLING	1			
	BEER / WINE STORE / SAMPLING (PEND)	0		GOVERNMENT (PEND)	0		LIQUOR STORE / SAMPLING (PEND)	0		1 MILE BUFFER	

Total Count: 33 liquor licenses