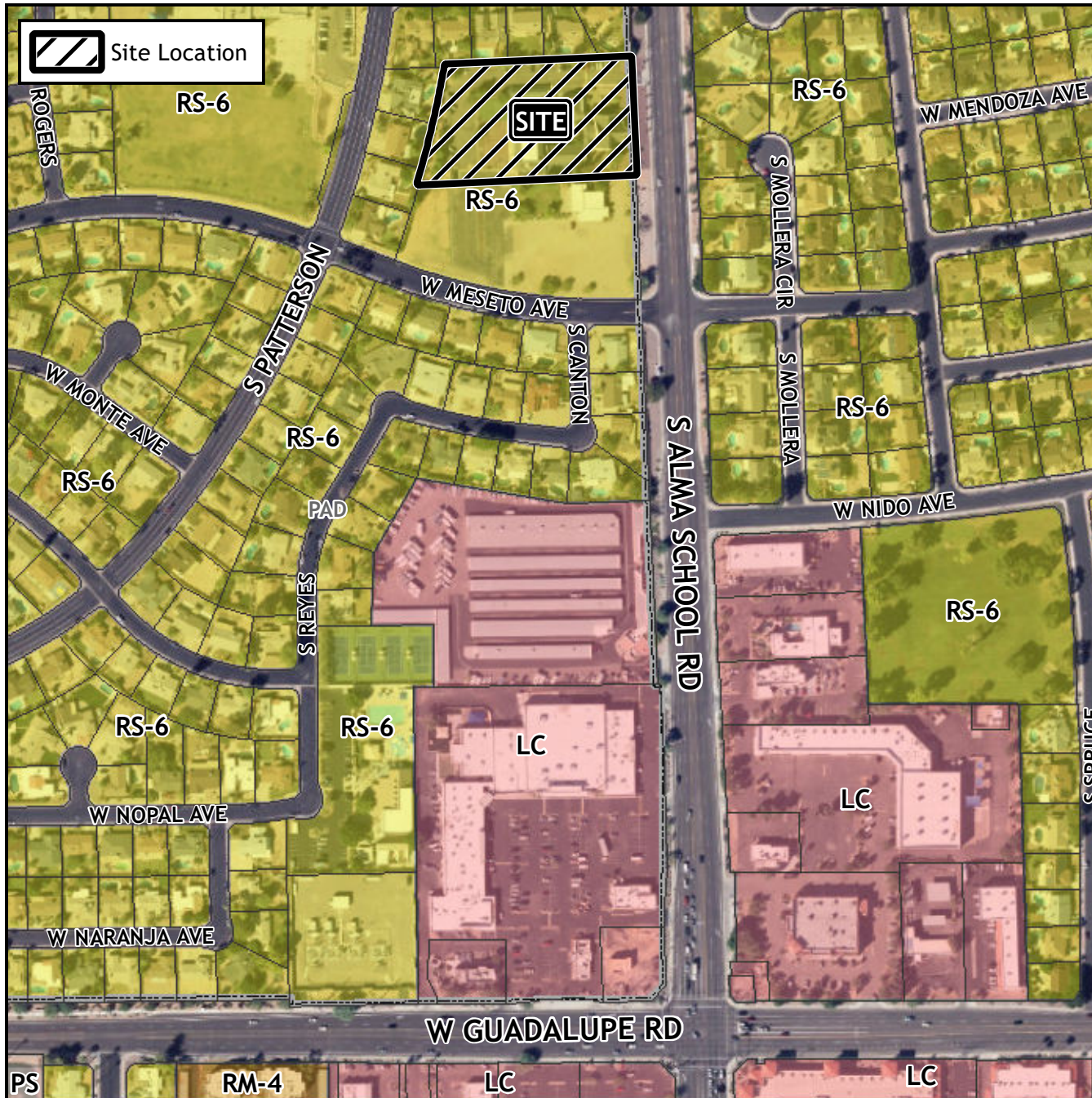


Board of Adjustment Vicinity Map: BOA23-00269

Case Details



Case:

BOA23-00269

Site / Address:

(District 3). 2520 South Alma School Road. Located west of Alma School Road and north of Guadalupe Road (2 ± acres).

Request:

Requesting a Substantial Conformance Incentive Permit (SCIP) to allow deviations from certain development standards in the Single-Residence-6 (RS-6) District.

