

01 Conceptual Front Side (North) Elevation
SCALE: 1/4" = 1'-0"

Material Usage	
01 EIFS Pearl Ash	30.60%
02 EIFS Calahan	9.50%
03 Brick Onix	13.80%
05 Glazing	19.25%
06 Matte Black Metal	27.00%



02 Conceptual Left Side (East) Elevation
SCALE: 1/4" = 1'-0"

Material Usage	
01 EIFS Pearl Ash	30.20%
02 EIFS Calahan	2.00%
03 Brick Onix	11.00%
05 Glazing	15.50%
06 Matte Black Metal	41.20%

Key Notes

- Backlit Branch & Future Tenant Space Metal Logo
- Metal Trellis over the Branch Office windows
- Metal Trellis over the Entrance of the Branch
- Metal Door to the Fire Riser Room
- Screen Metal Door for Refuse enclosure
- WDGE1 LED Architectural Wall Sconce
- LUMINIS SQ602 SYRIOS SQUARE Wall Down Light
- Per Mesa Amended Fire Code Section 505.1, address identification shall be located in this area. See code standards for address identification sign requirements.

FINISH LEGEND

<p>01 EIFS (Exterior Insulation Finishing System) MANUFACTURER : DRYVIT COLOR : 106 PEARL ASH TEXTURE : Sandblast NTX LRV : 35</p>	<p>05 STOREFRONT WINDOW MANUFACTURER : VITRO ARCHITECTURAL GLASS COLOR : SOLARBAN 60 (2) SOLARGRAY + CLEAR GLASS INSULATING GLASS UNIT</p>
<p>02 EIFS (Exterior Insulation Finishing System) MANUFACTURER : DRYVIT COLOR : 451 CALAHAN TEXTURE : Sandblast NTX LRV : 27</p>	<p>06 BRAKE METAL PANEL MANUFACTURER : WESTERN STATES METAL ROOFING COLOR : MATTE BLACK MATERIAL : T-GROOVE NR 1" DEEP CONCEALED FASTENER PANELS</p>
<p>03 BRICK VENEER MANUFACTURER : SUMMIT BRICK COMPANY COLOR : LB817 ONYX TEXTURE : SMOOTH</p>	<p>07 STANDING SEAM ROOF MANUFACTURER : BERRIDGE MANUFACTURING COMPANY COLOR : MATTE BLACK MATERIAL : 24 AND 22" GAUGE STEEL 0.032 ALUMINUM*</p>
<p>04 CMU MASONRY MANUFACTURER : ECHELON COLOR : IRONWOOD TEXTURE : SMOOTH FACE</p>	<p>08 STOREFRONT WINDOW FRAME MANUFACTURER : OLDCASTLE COLOR : BLACK 378X500 MATERIAL : ALUMINUM</p>

NUVISION CREDIT UNION
Longbow Branch

DATE : 07/18/2024

VERSION : Design Review
3rd Submittal

APPROVED BY:



SIGNATURE

DATE



6950 West Morelos Place, Chandler, AZ 85226
P 602.264.7263 | www.dbsi-inc.com



03 Conceptual Rear Side (South) Elevation
SCALE: 1/4" = 1'-0"

Material Usage	
01 EIFS Pearl Ash	25.30%
02 EIFS Calahan	15.70%
03 Brick Onix	19.10%
05 Glazing	5.50%
06 Matte Black Metal	34.30%



04 Conceptual Right Side (West) Elevation
SCALE: 1/4" = 1'-0"

Material Usage	
01 EIFS Pearl Ash	11.40%
02 EIFS Calahan	24.80%
03 Brick Onix	13.70%
05 Glazing	17.60%
06 Matte Black Metal	33.00%

Key Notes

- Backlit Branch & Future Tenant Space Metal Logo
- Metal Trellis over the Branch Office windows
- Metal Trellis over the Entrance of the Branch
- Metal Door to the Fire Riser Room
- Screen Metal Door for Refuge enclosure
- WDGE1 LED Architectural Wall Sconce
- LUMINIS SQ602 SYRIOS SQUARE Wall Down Light
- Per Mesa Amended Fire Code Section 505.1, address identification shall be located in this area. See code standards for address identification sign requirements.

FINISH LEGEND

<p>01 EIFS (Exterior Insulation Finishing System) MANUFACTURER : DRYVIT COLOR : 106 PEARL ASH TEXTURE : Sandblast NTX LRV : 35</p>	<p>05 STOREFRONT WINDOW MANUFACTURER : VITRO ARCHITECTURAL GLASS COLOR : SOLARBAN 60 (2) SOLARGRAY + CLEAR GLASS INSULATING GLASS UNIT</p>
<p>02 EIFS (Exterior Insulation Finishing System) MANUFACTURER : DRYVIT COLOR : 451 CALAHAN TEXTURE : Sandblast NTX LRV : 27</p>	<p>06 BRAKE METAL PANEL MANUFACTURER : WESTERN STATES METAL ROOFING COLOR : MATTE BLACK MATERIAL : T-GROOVE NR 1" DEEP CONCEALED FASTENER PANELS</p>
<p>03 BRICK VENEER MANUFACTURER : SUMMIT BRICK COMPANY COLOR : LB817 ONYX TEXTURE : SMOOTH</p>	<p>07 STANDING SEAM ROOF MANUFACTURER : BERRIDGE MANUFACTURING COMPANY COLOR : MATTE BLACK MATERIAL : 24 AND 22" GAUGE STEEL 0.032 ALUMINUM*</p>
<p>04 CMU MASONRY MANUFACTURER : ECHELON COLOR : IRONWOOD TEXTURE : SMOOTH FACE</p>	<p>08 STOREFRONT WINDOW FRAME MANUFACTURER : OLDCASTLE COLOR : BLACK 378X500 MATERIAL : ALUMINUM</p>

NUVISION CREDIT UNION

LONGBOW BRANCH

DATE : 07/18/2024

VERSION : Design Review
3rd Submittal

APPROVED BY:

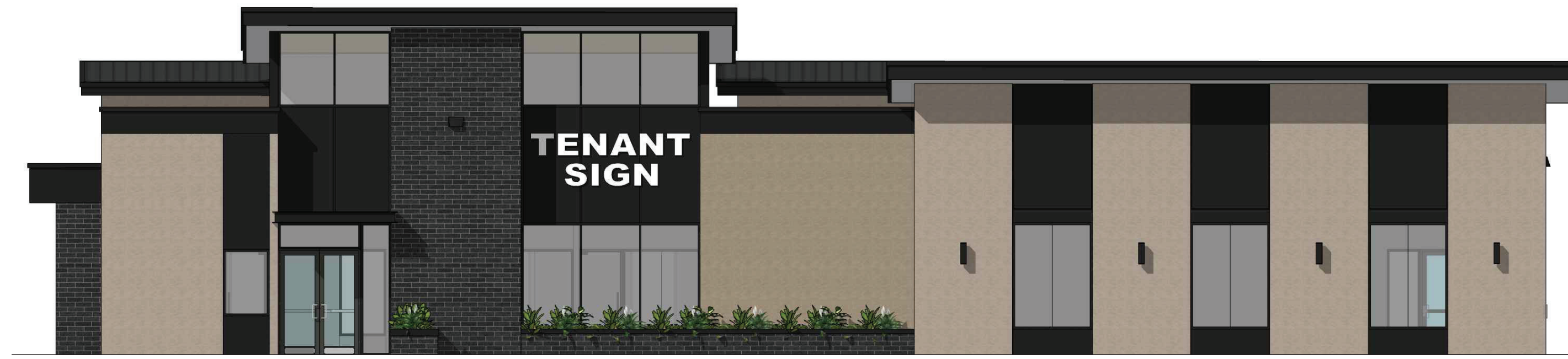


SIGNATURE

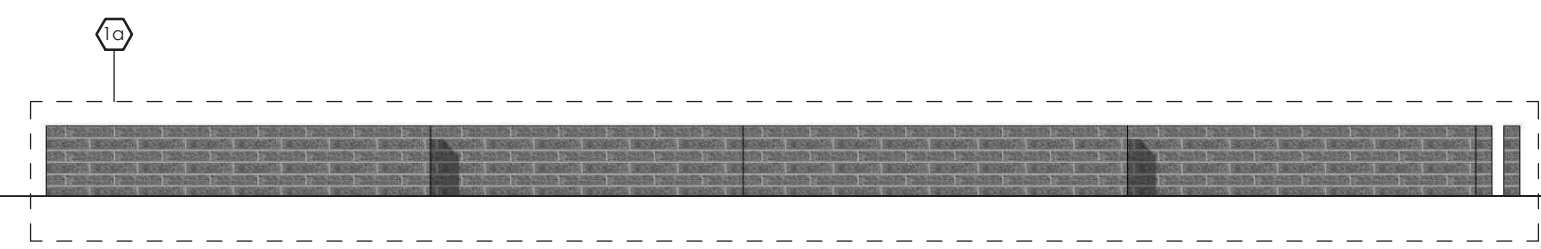
DATE



6950 West Morelos Place, Chandler, AZ 85226
P 602.264.7263 | www.dbsi-inc.com



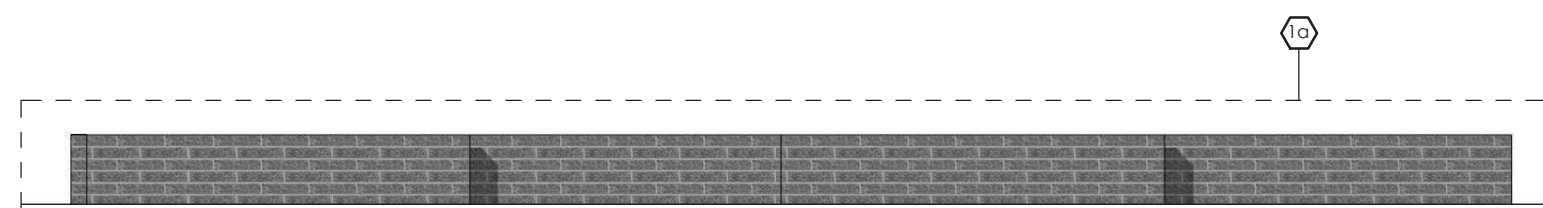
01 Conceptual North Elevation With Site Walls
SCALE: 1/8" = 1'-0"



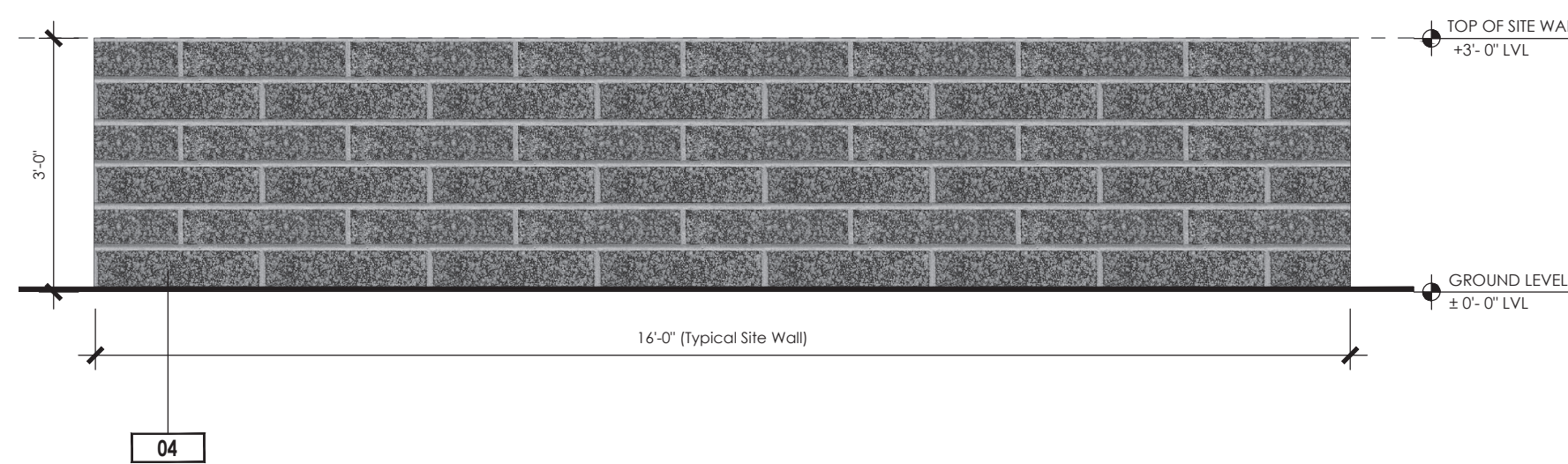
02 Conceptual East Elevation With Site Walls
SCALE: 1/8" = 1'-0"



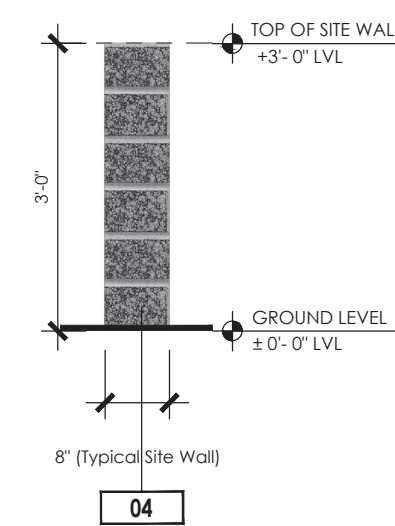
03 Conceptual South Elevation With Site Walls
SCALE: 1/4" = 1'-0"



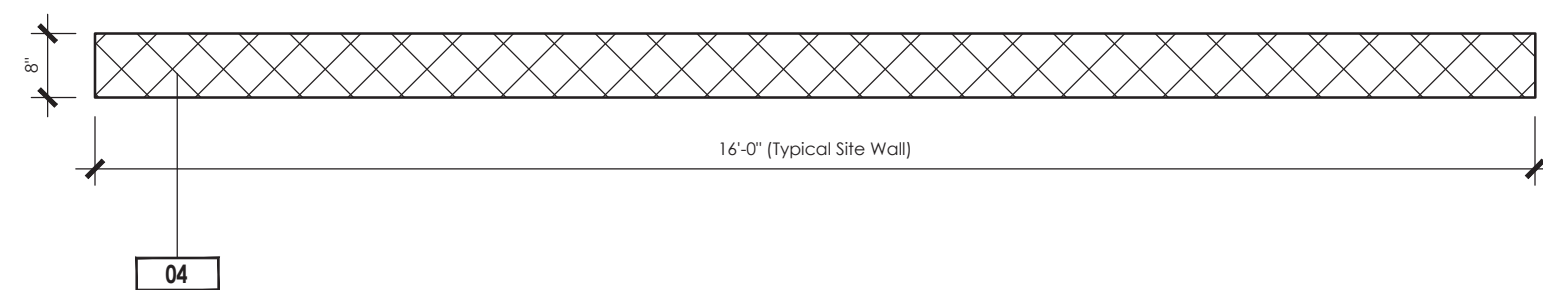
04 Conceptual West Elevation With Site Walls
SCALE: 1/4" = 1'-0"



1a Typical Site Walls - Front
SCALE: 1/2" = 1'-0"



1a Typical Site Walls - Side
SCALE: 1/2" = 1'-0"



1a Typical Site Walls Plan
SCALE: 1/2" = 1'-0"

Key Notes

1. Backlit Branch & Future Tenant Space Metal Logo
2. Metal Trellis over the Branch Office windows
3. Metal Trellis over the Entrance of the Branch
4. Metal Door to the Fire Riser Room
5. Screen Metal Door for Refuse enclosure
6. WEDGE1 LED Architectural Wall Sconce
7. LUMINIS SQ602 SYRIOS SQUARE Wall Down Light

FINISH LEGEND

<p>01 EIFS (Exterior Insulation Finishing System) MANUFACTURER : DRYVIT COLOR : 106 PEARL ASH TEXTURE : Sandblast NTX LRV : 35</p>	<p>05 STOREFRONT WINDOW MANUFACTURER : VITRO ARCHITECTURAL GLASS COLOR : SOLARBAN 60 (2) SOLARGRAY + CLEAR GLASS INSULATING GLASS UNIT</p>
<p>02 EIFS (Exterior Insulation Finishing System) MANUFACTURER : DRYVIT COLOR : 451 CALAHAN TEXTURE : Sandblast NTX LRV : 27</p>	<p>06 BRAKE METAL PANEL MANUFACTURER : WESTERN STATES METAL ROOFING COLOR : MATTE BLACK MATERIAL : T-GROOVE NR 1" DEEP CONCEALED FASTENER PANELS</p>
<p>03 BRICK VENEER MANUFACTURER : SUMMIT BRICK COMPANY COLOR : LB817 ONYX TEXTURE : SMOOTH</p>	<p>07 STANDING SEAM ROOF MANUFACTURER : BERRIDGE MANUFACTURING COMPANY COLOR : MATTE BLACK MATERIAL : 24 AND 22" GAUGE STEEL 0.032 ALUMINUM*</p>
<p>04 CMU MASONRY MANUFACTURER : ECHELON COLOR : IRONWOOD TEXTURE : SMOOTH FACE</p>	<p>08 STOREFRONT WINDOW FRAME MANUFACTURER : OLDCASTLE COLOR : BLACK 378X500 MATERIAL : ALUMINUM</p>

NUVISION CREDIT UNION

LOWBOW BRANCH

DATE : 07/18/2024
VERSION : Design Review
3rd Submittal

APPROVED BY:



SIGNATURE

DATE



6950 West Morelos Place, Chandler, AZ 85226
P 602.264.7263 | www.dbsi-inc.com



NUVISION CREDIT UNION

LONGBOW BRANCH

DATE : 07/18/2024

VERSION : Design Review
3rd Submittal

APPROVED BY:

[Signature Line]

SIGNATURE

DATE



6950 West Morelos Place, Chandler, AZ 85226
P 602.264.7263 | www.dbsi-inc.com



NUVISION CREDIT UNION

LOWBOW BRANCH

DATE : 07/18/2024

VERSION : Design Review
3rd Submittal

APPROVED BY:

[Signature Line]

SIGNATURE

DATE



6950 West Morelos Place, Chandler, AZ 85226
P 602.264.7263 | www.dbsi-inc.com