



CORNER RENDERING BUILDING 9

KEYNOTES

- A** SHERWIN WILLIAMS:
PEPPERCORN - SW 7674
- B** SHERWIN WILLIAMS:
MINDFUL GRAY - SW 7016
- C** CMU
- D** SHERWIN WILLIAMS
BLUE MOSQUE - SW 6789
- E** BLACK ANODIZED ALUMINUM MULLION SYSTEM W/
HIGH PERFORMANCE INSULATED GLAZING - VITRO
OPTIBLUE GLASS



This conceptual design is based upon a preliminary review of entitlement requirements and on unverified and possibly incomplete site and/or building information, and is intended merely to assist in exploring how the project might be developed. Signage shown is for illustrative purposes only and does not necessarily reflect municipal code compliance. All colors shown are for representative purposes only. Refer to material samples for actual color verification.

PERSPECTIVE VIEW W/ MATERIAL REFERENCES TO MAIN INDUSTRIAL BUILDINGS

MESA GATEWAY
MESA, ARIZONA - PHX21-0031-00

WARE MALCOMB

05.30.2023

PAGE
2



This conceptual design is based upon a preliminary review of entitlement requirements and on unverified and possibly incomplete site and/or building information, and is intended merely to assist in exploring how the project might be developed. Signage shown is for illustrative purposes only and does not necessarily reflect municipal code compliance. All colors shown are for representative purposes only. Refer to material samples for actual color verification.

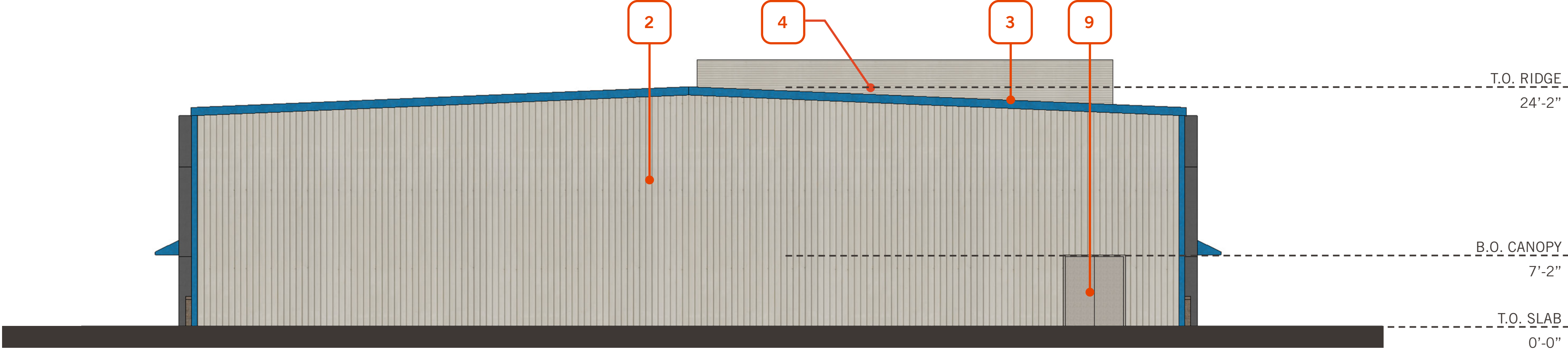
PERSPECTIVE VIEW

MESA GATEWAY
MESA, ARIZONA - PHX21-0031-00

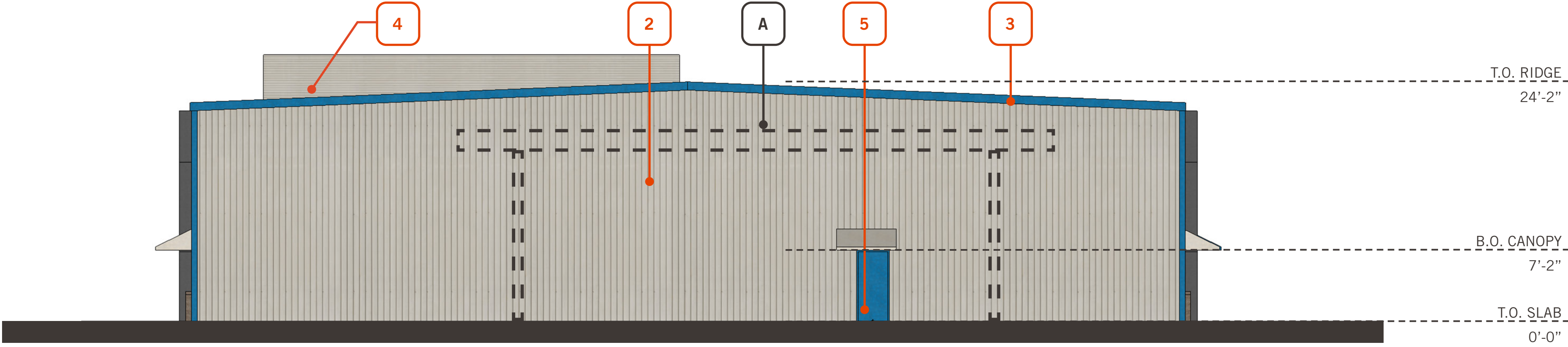
WARE MALCOMB

05.30.2023

PAGE
3



NORTH EXTERIOR ELEVATION | SCALE: 1/8" = 1'-0"

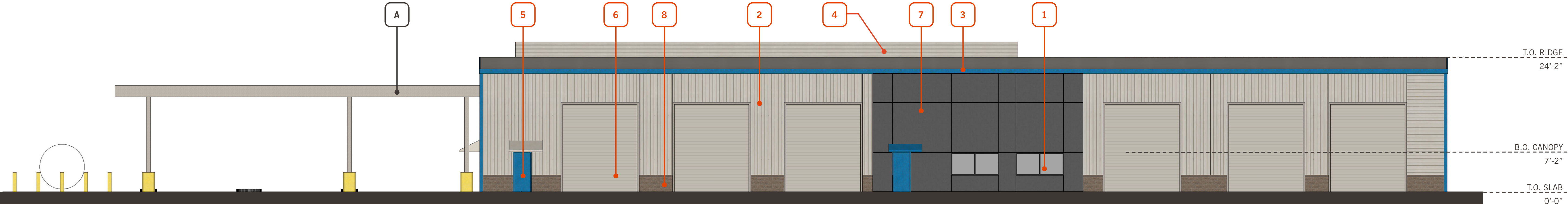


SOUTH EXTERIOR ELEVATION | SCALE: 1/8" = 1'-0"

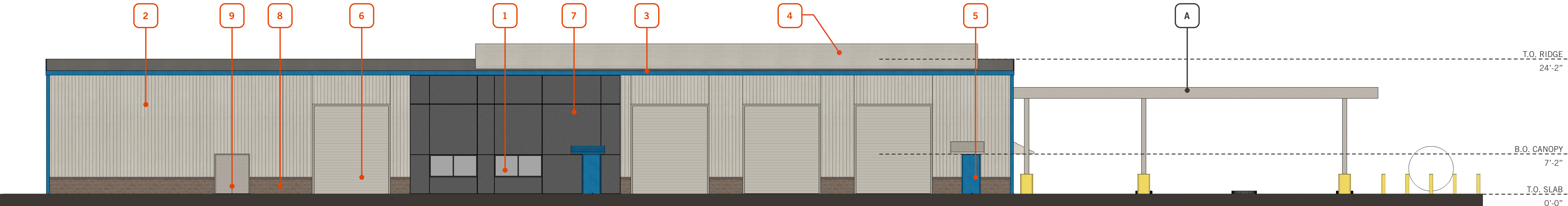
KEYNOTES

1	BLACK ANODIZED ALUMINUM MULLION SYSTEM W/ HIGH PERFORMANCE INSULATED GLAZING - VITRO OPTIBLUE GLASS	4	PRE-FINISHED METAL ROOFING AND MECH SCREEN: COLOR: SW 6182 - ETHEREAL WHITE	7	EIFS: COLOR: SW 7674 - PEPPERCORN	A	CANOPY OUTLINE
2	PRE-FINISHED METAL SIDING: COLOR: SW 7016 - MINDFUL GRAY	5	MAN DOORS TO MATCH COLOR: SW 6789 - BLUE MOSQUE	8	CMU WAINSCOT		
3	PRE-FINISHED METAL TRIM: COLOR: SW 6789 - BLUE MOSQUE	6	ROLL UP DOORS TO MATCH COLOR: SW 7016 - MINDFUL GRAY	9	MAN DOORS TO MATCH COLOR: SW 7016 - MINDFUL GRAY		

This conceptual design is based upon a preliminary review of entitlement requirements and on unverified and possibly incomplete site and/or building information, and is intended merely to assist in exploring how the project might be developed. Signage shown is for illustrative purposes only and does not necessarily reflect municipal code compliance. All colors shown are for representative purposes only. Refer to material samples for actual color verification.



EAST EXTERIOR ELEVATION | SCALE: 1/8" = 1'-0"



WEST EXTERIOR ELEVATION | SCALE: 1/8" = 1'-0"

KEYNOTES

1	BLACK ANODIZED ALUMINUM MULLION SYSTEM W/ HIGH PERFORMANCE INSULATED GLAZING - VITRO OPTIBLUE GLASS	4	PRE-FINISHED METAL ROOFING AND MECH SCREEN: COLOR: SW 6182 - ETHEREAL WHITE	7	EIFS: COLOR: SW 7674 - PEPPERCORN	A	CANOPY OUTLINE
2	PRE-FINISHED METAL SIDING: COLOR: SW 7016 - MINDFUL GRAY	5	MAN DOORS TO MATCH COLOR: SW 6789 - BLUE MOSQUE	8	CMU WAINSCOT		
3	PRE-FINISHED METAL TRIM: COLOR: SW 6789 - BLUE MOSQUE	6	ROLL UP DOORS TO MATCH COLOR: SW 7016 - MINDFUL GRAY	9	MAN DOORS TO MATCH COLOR: SW 7016 - MINDFUL GRAY		

This conceptual design is based upon a preliminary review of entitlement requirements and on unverified and possibly incomplete site and/or building information, and is intended merely to assist in exploring how the project might be developed. Signage shown is for illustrative purposes only and does not necessarily reflect municipal code compliance. All colors shown are for representative purposes only. Refer to material samples for actual color verification.