



Design Review Board



DRB24-00253

CyrusOne Data Center

Cassidy Welch, Senior Planner

July 9, 2024



Request

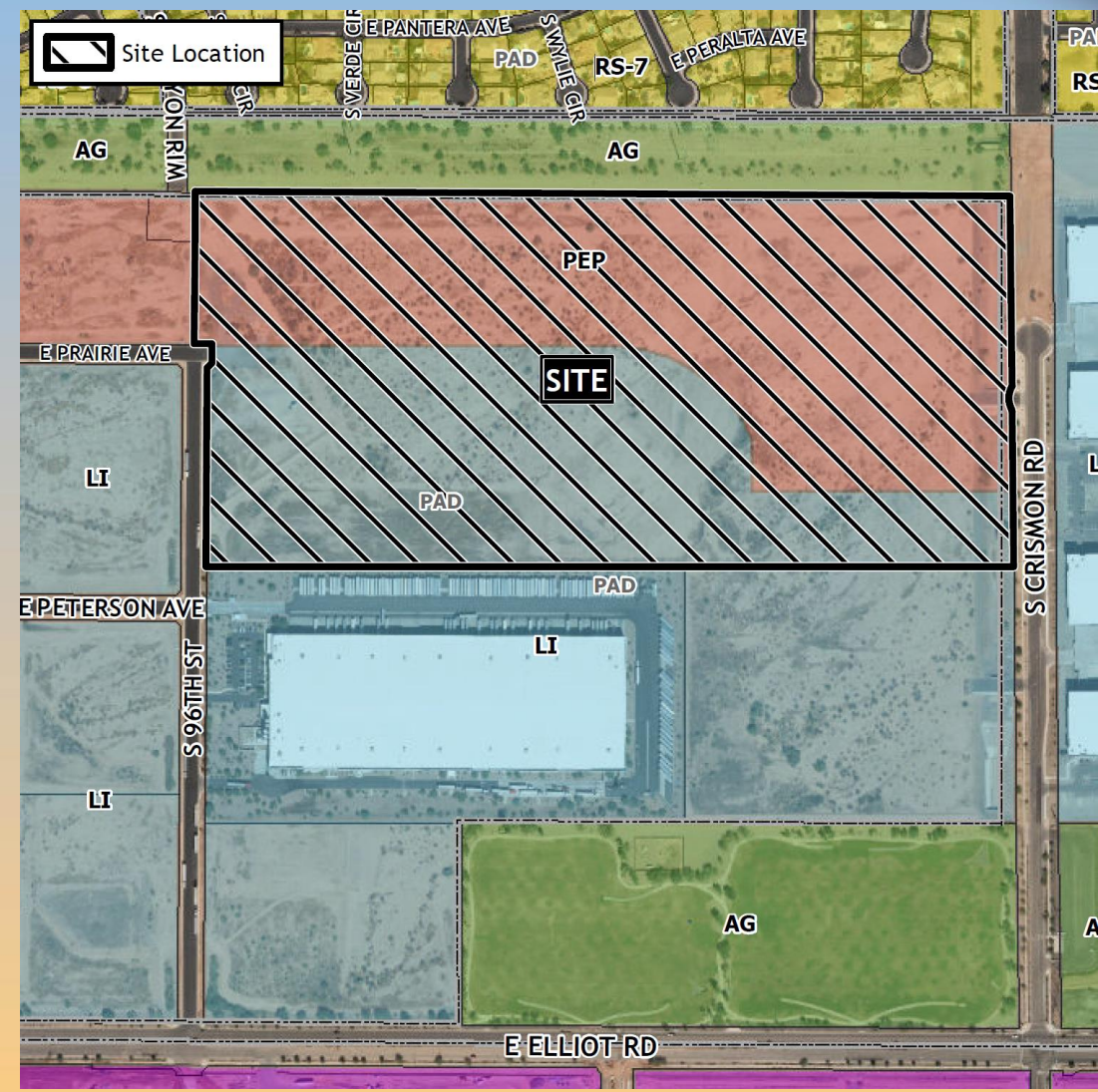
- Design Review
- To allow for a data center





Location

- North of Elliot Road
- West of Crismon Road





Site Photos

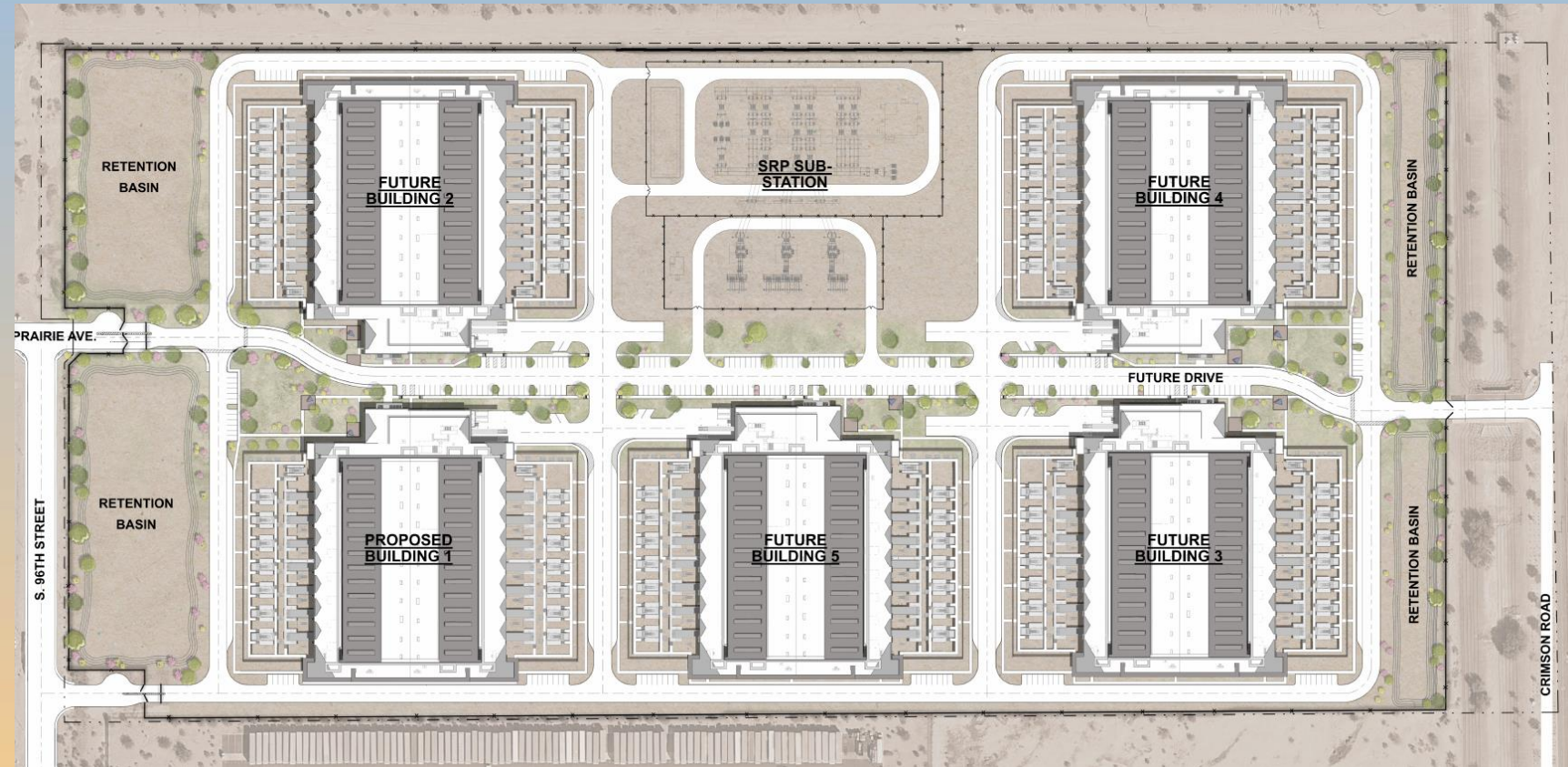


Looking east towards the site



Site Plan

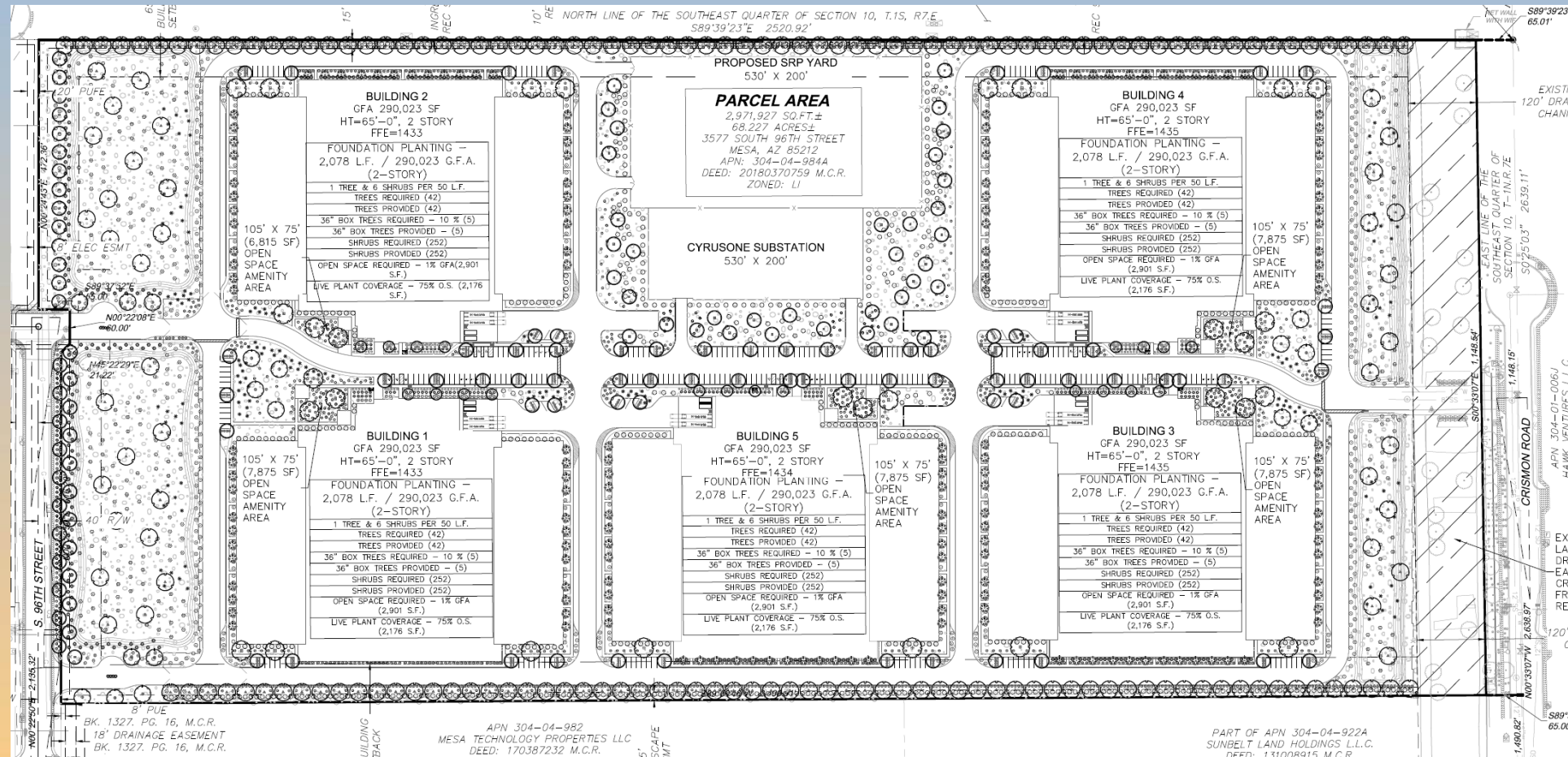
- Five 290,023 SF buildings
- 1,615 spaces required; 281 spaces provided





Landscape Plan

SYMBOL	BOTANICAL / COMMON NAME	QTY
EVERGREEN TREES		
○	PARKINSONIA PRAECOX	73
○	SONORAN PALM VERDE	73
○	PARKINSONIA X 'DESERT MUSEUM'	
○	DESERT MUSEUM PALO VERDE	
○	PROSOPIS X 'AZT SEEDLESS'	180
○	AZT SEEDLESS HYBRID MESQUITE	326
ORNAMENTAL TREES		
○	CAESALPINIA CALACALOE 'SMOOTHIE'	166
○	SMOOTHIE 'THORNLESS CASCALOTE'	
○	X CHITALPA TASHKENTENSIS 'PINK DAWN'	21
○	PINK DAWN CHITALPA	
SHADE TREES		
○	OLIVEA TESOTA	18
○	DESERT IRONWOOD	
○	PITHECELLOBIUM FLEXICAULE	30
○	TEXAS EBONY	48
EVERGREEN GROUNDCOVER		
○	EREMOPHILA GLABRA 'MINGENOW GOLD'	645
○	OUTBACK SUNRISE EMU BUSH	
○	LANTANA CAMARA 'DWARF YELLOW'	188
○	YELLOW BUSH LANTANA	
○	LANTANA MONTEVIDENSIS	899
○	PURPLE TRAILING LANTANA	
LARGE SHRUBS		
○	AGAVE OVATIFOLIA	168
○	WHALE'S TONGUE AGAVE	
○	DASYLIRION WHEELERI	153
○	GREY DESERT SPOON	
○	DODONAEA VISCOSA	86
○	HOPSEED BUSH	
○	HESPERALOE FUNIFERA	307
○	GIANT HESPERALOE	
○	LARREA TRIDENTATA	581
○	CROSETO BUSH	
○	LEUCOPHYLLUM LANGMANIAE 'LYNN'S LEGACY'	97
○	LYNN'S LEGACY LANGMANIAE 'SAGE'	
○	SIMMONDSIA CHINENSIS	272
○	JOJOBA	
○	TEGOMA X 'ORANGE JUBILEE'	235
○	ORANGE JUBILEE YELLOW BELLS	
MEDIUM SHRUBS		
○	CALLIANDRA ERIOPHYLLA	304
○	FAIRY DUSTER	
○	ENCELIA FARINOSA	262
○	BRITTLEBUSH	
○	HESPERALOE PARVIFLORA	68
○	RED YUCCA	
○	MUHLENBERGIA RIGENS	216
○	DEER GRASS	
○	RUPELLIA PENINSULARIS	182
○	DESERT RUPELLIA	
○	YUCCA PALLIDA	67
○	PALE-LEAF YUCCA	
GROUND COVERS		
○	DECOMPOSED GRANITE @ 2" DEPTH	850,219 SF
○	3/4" SCREENED ROCK PROS DESERT GOLD	
SUBTOTAL:		
		850,219 SF



APN 304-04-982
MESA TECHNOLOGY PROPERTIES LLC
DEED: 170387232 M.C.R.

PART OF APN 304-04-922A
SUNBELT LAND HOLDINGS L.L.C.
DEED: 13108815 M.C.R.



Renderings





Renderings



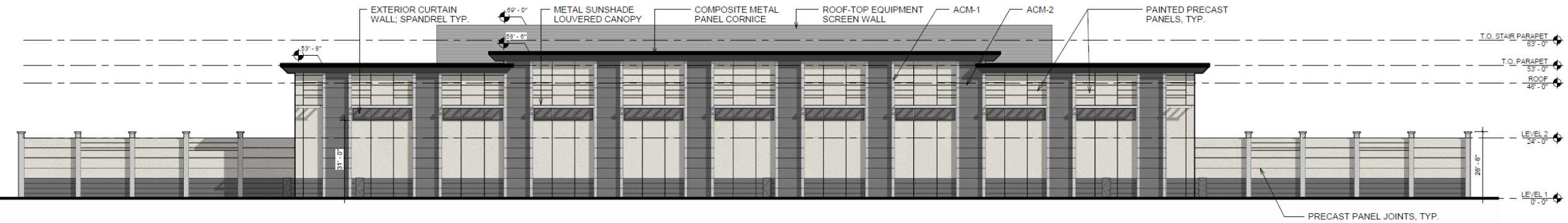


Renderings

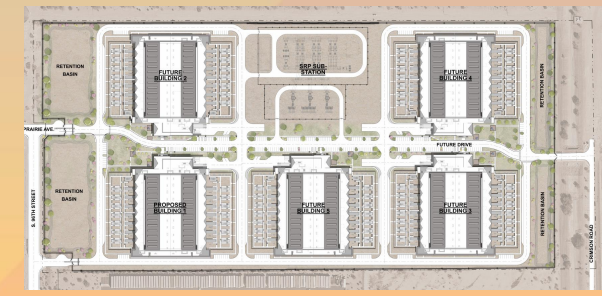




Elevations

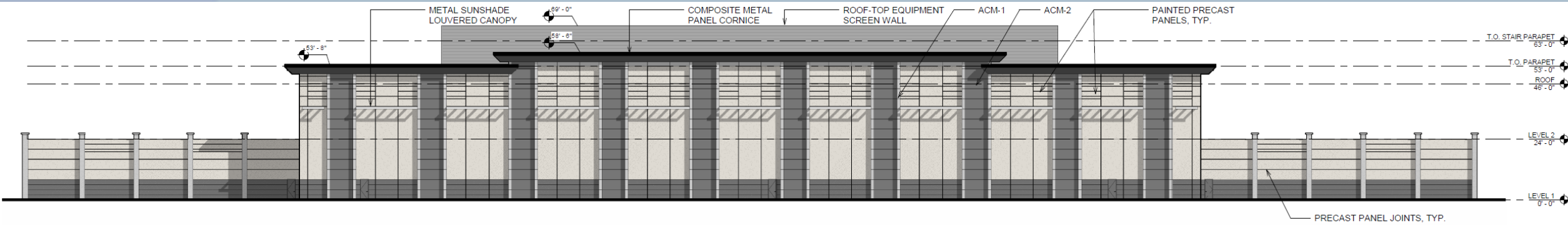


2 EXTERIOR ELEVATION - REAR ELEVATION OF BUILDINGS 2, 4
1" = 20'-0"

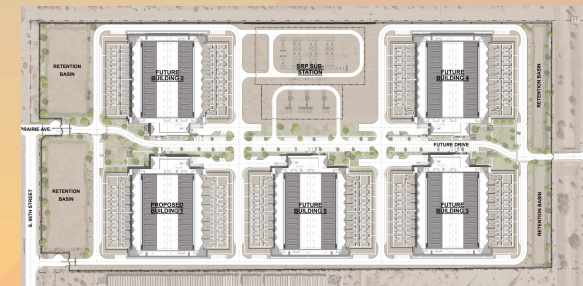




Elevations

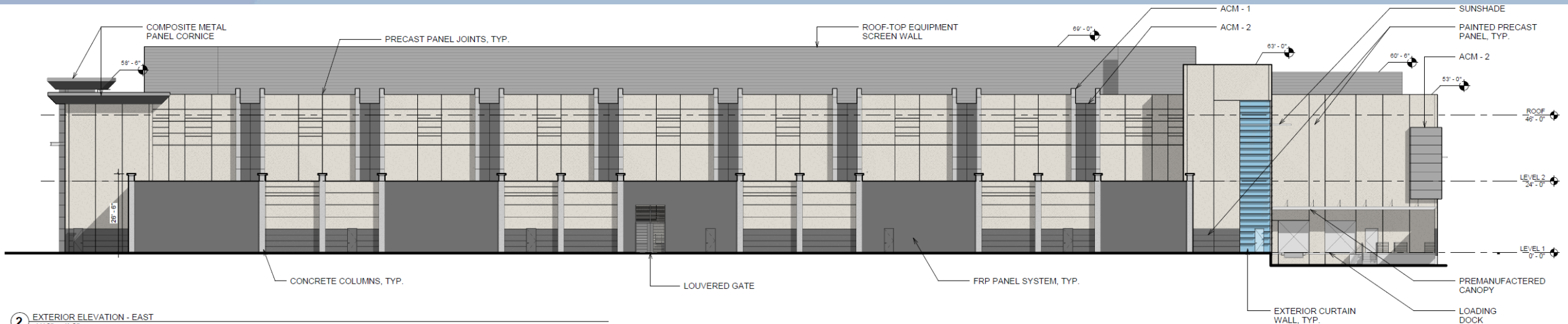


1 EXTERIOR ELEVATION - REAR ELEVATION OF BUILDINGS 1, 3, 5
1" = 20'-0"

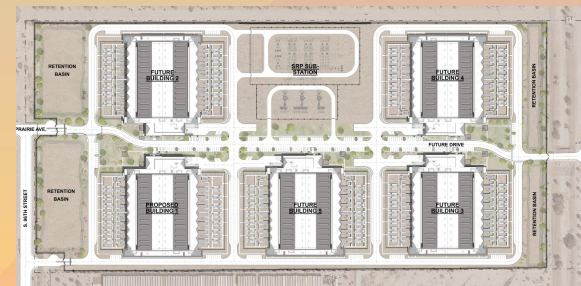




Elevations

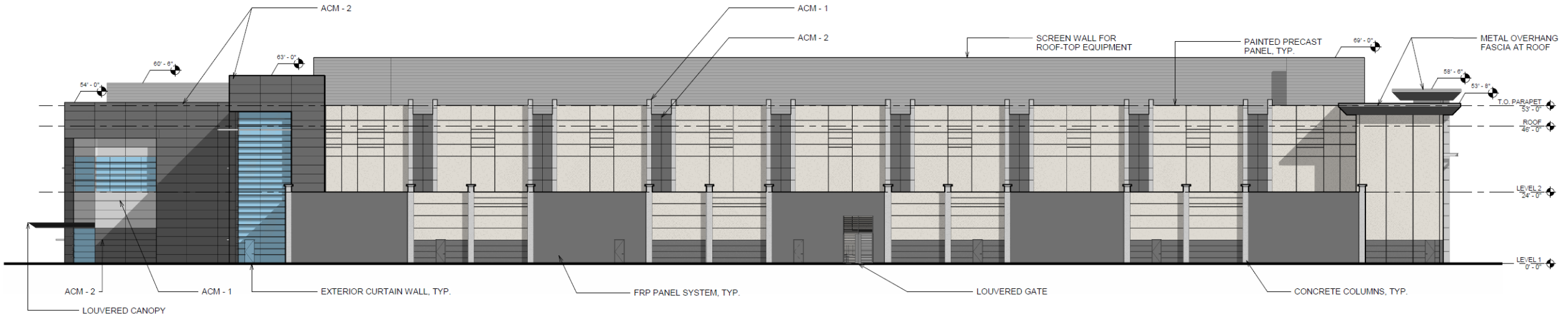


2 EXTERIOR ELEVATION - EAST
1/16" = 1'-0"

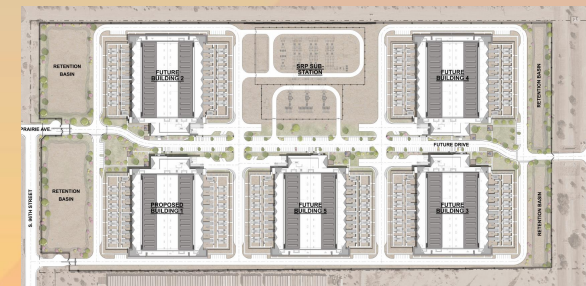




Elevations

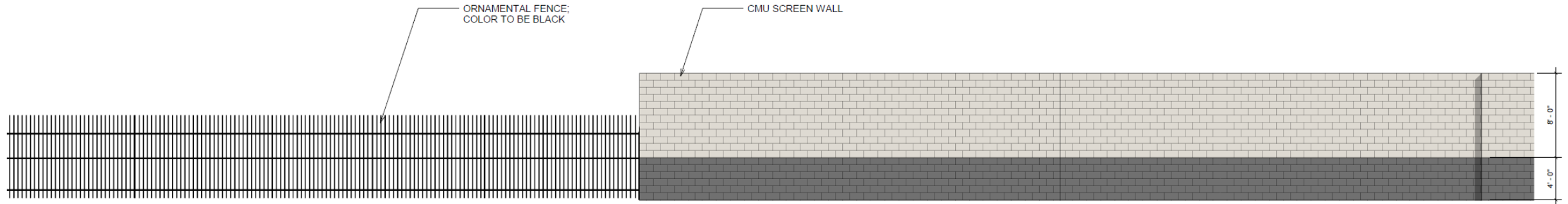


1 EXTERIOR ELEVATION - WEST
1/16" = 1'-0"





Elevations



1 North Perimeter Fence Elevation
3/16" = 1'-0"



Material Board

MISC. MATERIALS:

MFR: ADVANTIC (OR APPROVED EQUAL)
TYPE: PAINTED FRP PANEL
COLOR: SHERWIN WILLIAMS SW7075 WEB GREY



METAL:

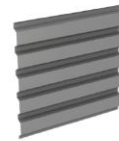
MFR: MITSUBISHI CHEMICAL COMPOSITES
TYPE: ALPOLIC COMPOSITE METAL PANELS
COLOR: KYNAR SILVER (OR SIMILAR)



MFR: MITSUBISHI CHEMICAL COMPOSITES
TYPE: ALPOLIC COMPOSITE METAL PANELS
COLOR: MZG MICA GREY



MFR: CENTRIA (OR APPROVED EQUAL)
TYPE: CORRUGATED B.DECK (ROOF SCREENING MATERIAL)
COLOR: WEB GREY (OR SIMILAR)



GLAZING:

MFR: VIRACON (OR APPROVED EQUAL)
TYPE: 1" INSULATED HIGH PERFORMANCE
COLOR: VS26-08 SOLAR BLUE



Reflected Color



Transmitted Color

MFR: VIRACON – SPANDREL (OR APPROVED EQUAL)
TYPE: 1" INSULATED HIGH PERF. REFLECTIVE
COLOR: VS26-08 INSULATING SPANDREL
V957 SUBDUED GRAY ON #4 SURFACE



V957
Subdued Gray

PRECAST CONCRETE:

MFR: CORESLAB
TYPE: PAINTED PRECAST CONCRETE
COLOR: SHERWIN WILLIAMS SW7075 WEB GREY
COATING: ELASTOMETRIC



MFR: CORESLAB
TYPE: PAINTED PRECAST CONCRETE
COLOR: BENJAMIN MOORE 2121-40 SILVER HALF DOLLAR
COATING: ELASTOMETRIC





Findings

Staff is seeking your review and recommendation on the following:

- ✓ Proposed building elevations and landscape design

Staff welcomes any feedback



Design Review Board