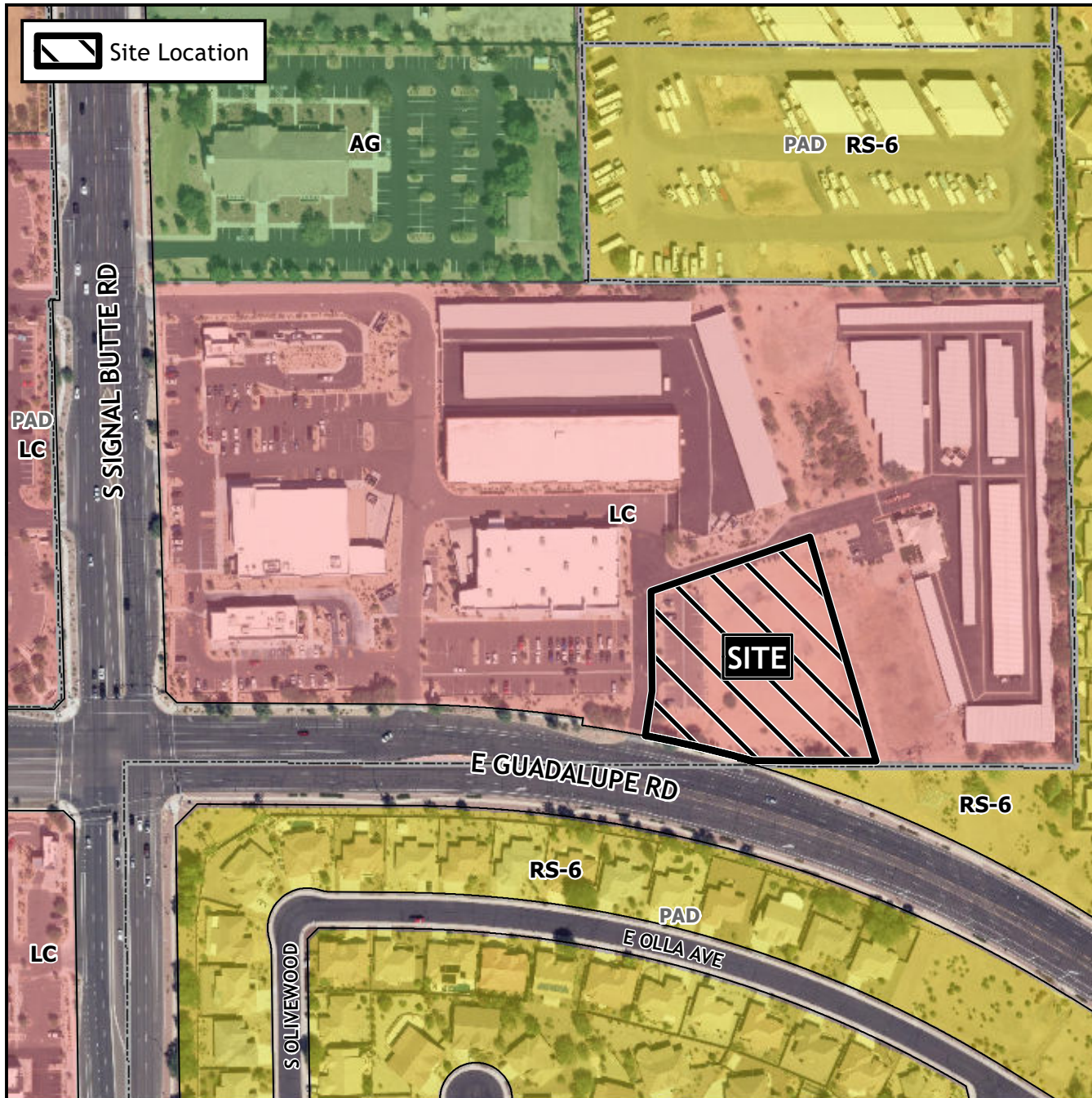


# Design Review Vicinity Map: DRB23-00335

# Case Details



## Case:

DRB23-00335

## Site / Address:

(District 6). Within the 10900 block of East Guadalupe Road (north side). Located east of Signal Butte Road on the north side of Guadalupe Road. (1.64 ± acres).

## Request:

Design review for a day care facility.

