

phillip r. ryan
 landscape architect p.c.
 landscape architecture & planning
 4916 s. quiet way
 gilbert, arizona 85298
 (480) 246-9681
 mail@ryanassociatesonline.net

Sketch
 Architecture Company
 2454 East Southern Avenue, Mesa, Arizona 85205, ph: 480.668.8215, fax: 480.668.8232

MESA ARIZONA EASTMARK GRANGER 250-4SC
 THE CHURCH OF JESUS CHRIST OF LATTER-DAY SAINTS
 MESA AZ EASTMARK STAKE
 10621 E. WILLIAMSFIELD RD., MESA, AZ 85212
 OWNER'S PROPERTY NO. 50144272010101



Project Number
 2023-29

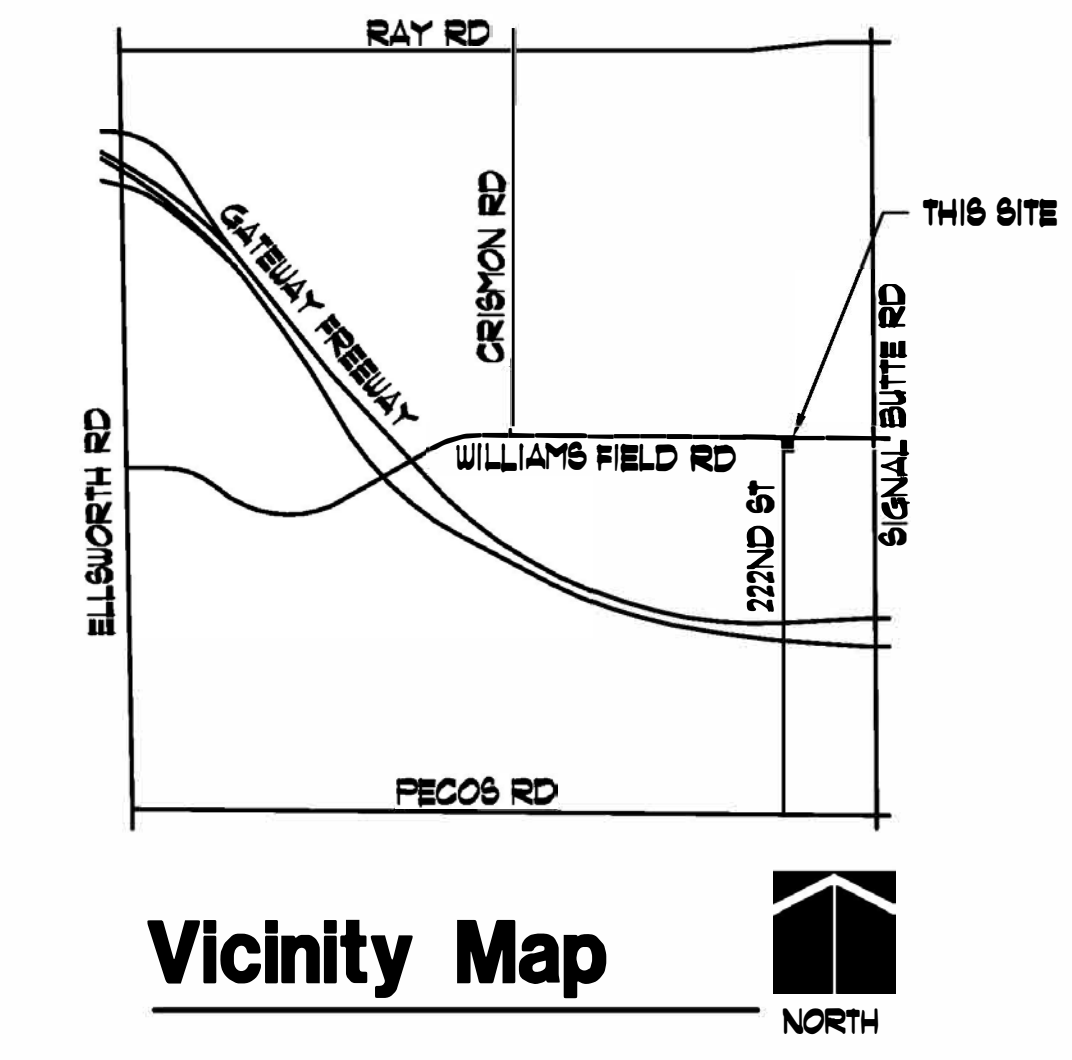
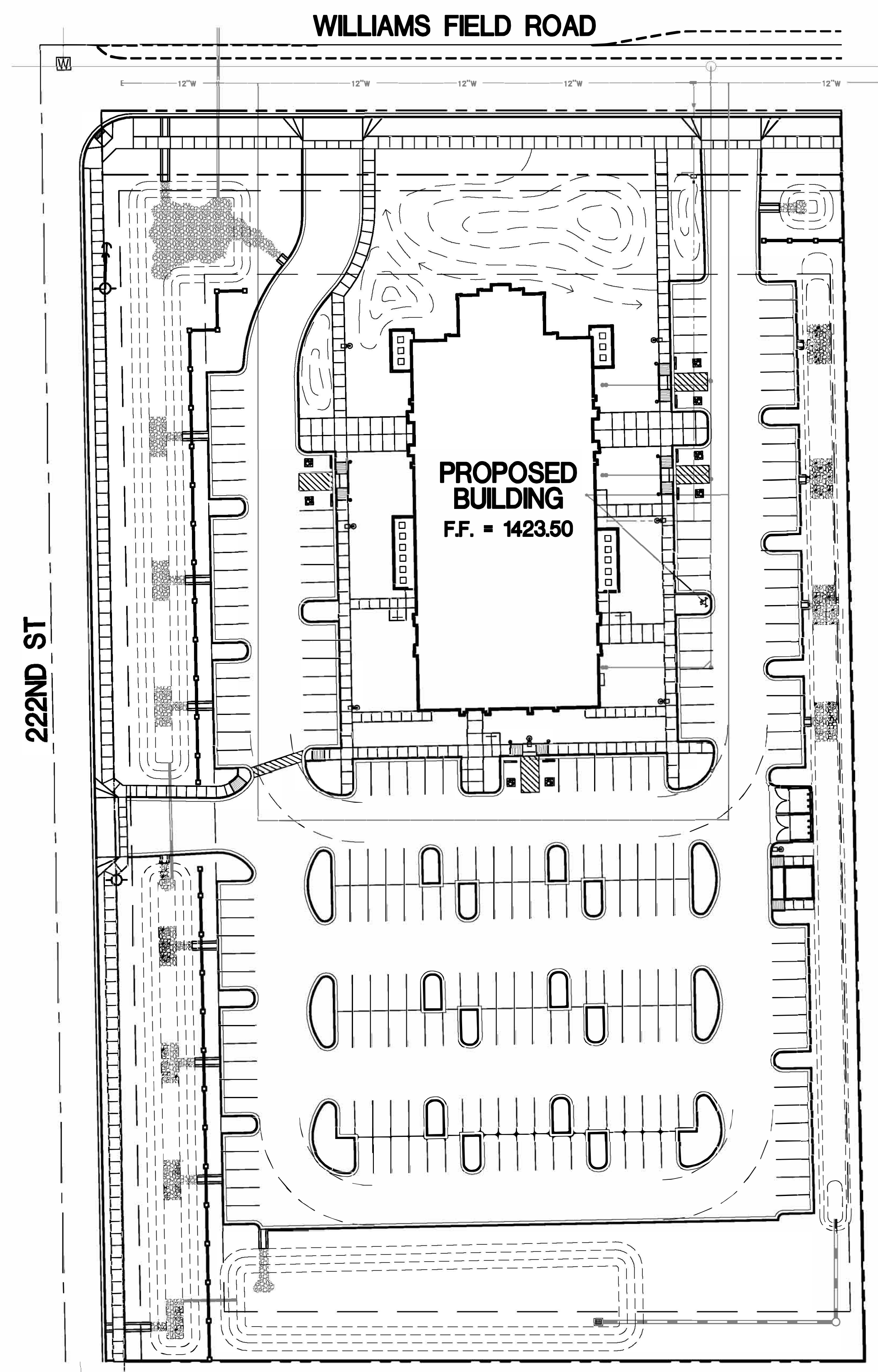
COVER SHEET

L-1

LANDSCAPE CALCULATIONS CHART									
AREA	FORMULA	REQUIRED				PROVIDED			
		36" BOX TREES	24" BOX TREES	15 GAL. TREES	SHRUBS	36" BOX TREES	24" BOX TREES	15 GAL. TREES	SHRUBS
WILLIAMS FIELD RD (370 L.F.)	(1 TREE AND 6 SHRUBS/ 25 L.F. OF FRONTAGE) (25% 36" BOX, 50% 24" BOX, 25% 15 GAL. MIN.)	3	9	3	89	3	9	3	91
PARKING LOT ((31) 15' ISLANDS) ((6) 30' ISLANDS)	15' ISLAND: (1) TREE AND (3) SHRUBS 30' ISLAND: (2) TREES AND (6) SHRUBS (MIN. 10% OF REQ'D. TREES TO BE 36" BOX- BALANCE OF TREES TO BE 24" BOX)	5	38	0	129	30	13	0	135
SOUTH FOUNDATION BASE (90 L.F.)	(1) TREE/ 50 L.F. (10% OF REQ'D. TREES TO BE 36" BOX- BALANCE OF TREES TO BE 24" BOX)	0	2	0	N.A.	0	3	0	N.A.
NORTH FOUNDATION BASE (90 L.F.)	(1) TREE/ 50 L.F. (10% OF REQ'D. TREES TO BE 36" BOX- BALANCE OF TREES TO BE 24" BOX)	0	2	0	N.A.	0	2	0	N.A.
WEST FOUNDATION BASE (185 L.F.)	(1) TREE/ 50 L.F. (10% OF REQ'D. TREES TO BE 36" BOX- BALANCE OF TREES TO BE 24" BOX)	1	3	0	N.A.	5	0	0	N.A.
EAST FOUNDATION BASE (185 L.F.)	(1) TREE/ 50 L.F. (10% OF REQ'D. TREES TO BE 36" BOX- BALANCE OF TREES TO BE 24" BOX)	1	3	0	N.A.	4	0	1	N.A.
222ND ST (626 L.F.)	(1 TREE AND 6 SHRUBS/ 25 L.F. OF FRONTAGE) (25% 36" BOX, 50% 24" BOX, 25% 15 GAL. MIN.)	6	13	6	50	6	16	2	201
SOUTH PERIMETER (370 L.F.)	(3 TREES AND 20 SHRUBS/ 100 L.F.) (100% 24" BOX)	0	12	0	80	0	13	0	80
EAST PERIMETER (626 L.F.)	(3 TREES AND 20 SHRUBS/ 100 L.F.) (100% 24" BOX)	0	21	0	140	0	28	0	140

GENERAL NOTES:

- TREE HEIGHTS AND CALIPERS WILL COMPLY WITH 'ARIZONA NURSERY ASSOCIATION SPECIFICATIONS' FOR THAT TYPE AND SIZE OF TREE.
- LANDSCAPING IN RIGHT-OF-WAY REQUIRED, MUST BE INORGANIC OR CONFORMANCE WITH LOW WATER USING PLANT LIST AVAILABLE FROM THE CITY OF MESA, PUBLIC WORKS ADMINISTRATION. SEPARATE ENGINEERING PERMIT REQUIRED FOR LANDSCAPING WITHIN RIGHT-OF-WAY.
- MAXIMUM SLOPE OF RETENTION BASIN ADJACENT TO PUBLIC RIGHT-OF-WAY IS 1:6 (BOTH SIDES OF BASIN) AND 1:4 ON INTERIOR PROPERTY LINES.
- MAXIMUM GRADE CHANGE AT PROPERTY LINE IS 2 FEET.
- THE REQUIRED BACKFLOW PREVENTION ASSEMBLY SHALL BE MANUFACTURER AND MODEL DESIGNATED IN THE CURRENT 'LIST OF APPROVED BACKFLOW PREVENTION ASSEMBLIES' AS PUBLISHED BY THE FOUNDATION FOR CROSS-CONNECTION CONTROL AND HYDRAULIC RESEARCH, UNIVERSITY OF SOUTHERN CALIFORNIA.
- THE BACKFLOW PREVENTION ASSEMBLY SHALL BE TESTED AND APPROVED BY A CERTIFIED TECHNICIAN DESIGNATED IN THE CURRENT CITY OF MESA LIST OF APPROVED INSPECTORS PRIOR TO THE REQUEST FOR FINAL INSPECTION.
- INSTALL A REDUCED PRESSURE PRINCIPLE BACKFLOW PREVENTION ASSEMBLY PER CITY OF MESA STANDARD DETAIL M-313.
- WATER SERVICE INSTALLATION FOR WATER METER SHALL BE INSTALLED PER CITY OF MESA STD. DETAIL M-49.14 M-49.2.
- TREES SHALL BE PLANTED AT LEAST 20 FEET AWAY FROM ANY STREET LIGHT POLE OR LIGHTING CONTROL CABINET(LCC). SHRUB SHALL BE PLANTED AT LEAST 7 FEET AWAY FROM ANY STREET LIGHT POLE OR LCC. SEE SECTION 92.37 IN THE CITY OF MESA ENGINEERING PROCEDURE MANUAL.
- ALL LANDSCAPE MATERIAL INSTALLED SHALL BE MAINTAINED BY OWNER OR LESSEE IN ACCORDANCE WITH THE APPROVED LANDSCAPE PLAN.
- ALL TREES AND SHRUBS LOCATED IN THE LINE-OF-SIGHT WILL BE MAINTAINED FOR A CLEAR AREA BETWEEN 3' AND 7' FROM PAVED SURFACE WHERE SIGHT LINE OCCURS. SEE LANDSCAPE PLAN FOR SIGHT LINE.
- THERE ARE EXISTING OVERHEAD POWER LINES ON THIS PROJECT SITE.
- BACKFLOW DEVICES (OR PROTECTIVE CAGE) TO BE PAINTED TAN TO MATCH DECOMPOSED GRANITE IN COLOR TO DISCOURAGE THEFT.
- SIGNAGE REQUIRED A SEPARATE SIGN PERMIT.



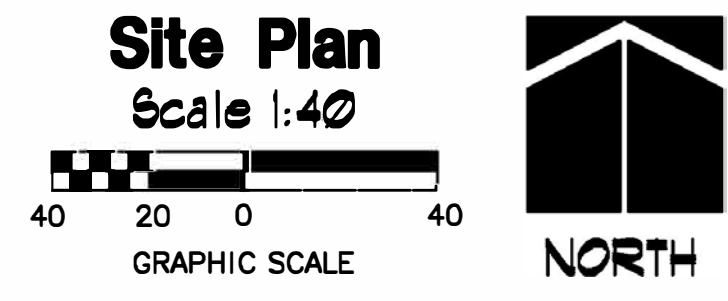
PROJECT TEAM:

PROPERTY OWNER: THE CHURCH OF JESUS CHRIST OF LATTER-DAY SAINTS

ARCHITECT: SKETCH ARCHITECTURE COMPANY
 2454 E. SOUTHERN AVE.
 MESA, ARIZONA 85205
 CONTACT: RANDY CARTER
 PHONE: (480) 668-8015
 E-MAIL: RANDY@SKETCHARCHITECTURECOMPANY.COM

LANDSCAPE ARCHITECT: PHILLIP R. RYAN, LANDSCAPE ARCHITECT P.C.
 4916 S. QUIET WAY
 GILBERT, ARIZONA 85298
 CONTACT: PHIL RYAN
 PHONE: (480) 246-9681
 E-MAIL: MAIL@RYANASSOCIATESONLINE.NET

CIVIL ENGINEER: BABBITT SMITH ENGINEERING
 1140 E. GREENWAY, SUITE 2
 MESA, ARIZONA 85203
 CONTACT: DARREN SMITH
 PHONE: (480) 751-8021
 E-MAIL: DARREN@BABBITTSMITH.COM



SHEET INDEX:

- L-1 COVER SHEET
- L8-1 NATIVE TREE SALVAGE PLAN
- L-2 LANDSCAPE PLAN
- L-3 IRRIGATION PLAN
- L-4 LANDSCAPE & IRRIGATION DETAILS
- L-5 LANDSCAPE & IRRIGATION DETAILS
- L-6 LANDSCAPE & IRRIGATION DETAILS
- L-7 LANDSCAPE & IRRIGATION DETAILS

ORIGINAL DATE OF SHEET: ALL RIGHTS RESERVED. THIS DOCUMENT IS THE PROPERTY OF PHILLIP R. RYAN, LANDSCAPE ARCHITECT P.C. AND IS NOT TO BE REPRODUCED OR TRANSMITTED IN ANY FORM OR BY ANY MEANS, ELECTRONIC OR MECHANICAL, INCLUDING PHOTOCOPYING, RECORDING, OR BY ANY INFORMATION STORAGE AND RETRIEVAL SYSTEM, WITHOUT THE WRITTEN PERMISSION OF PHILLIP R. RYAN, LANDSCAPE ARCHITECT P.C.

PLANT SCHEDULE: (FOR THIS SHEET ONLY)

PLANT NAME	SIZE	QUANTITY	ALLOWABLE AREA PER TABLE 11-33-21E
EXISTING TREE	SALVAGED MESQUITE TREE FROM ON SITE OR 48" BOX NATIVE MESQUITE	4 TOTAL	100 SQ. FT.
PISTACHIA CH. 'RED FUSH'	36" BOX MINIMUM	31 TOTAL	100 SQ. FT.
RED FUSH PISTACHIA	11' HT, 6' SP, 2-1/2" CAL.		
QUERCUS VIRGINIANA SOUTHERN LIVE OAK	36" BOX MINIMUM	12 TOTAL	100 SQ. FT.
QUERCUS VIRGINIANA SOUTHERN LIVE OAK	12' HT, 6' SP, 2 1/2" CAL.		
CHITALPA TASHKENSIS CHITALPA	24" BOX MINIMUM	21 TOTAL	100 SQ. FT.
CHITALPA TASHKENSIS CHITALPA	9' HT, 4.5' SP, 1 1/4" CAL.		
CAESALPINIA MEXICANA MEXICAN BIRD OF PARADISE	24" BOX MINIMUM	5 TOTAL	25 SQ. FT.
CAESALPINIA MEXICANA MEXICAN BIRD OF PARADISE	8' HT, 4.5' SP, 1 1/4" CAL.		
ACACIA MILGA MULGA TREE	15 GALLON TREE FORM	7 TOTAL	25 SQ. FT.
ACACIA MILGA MULGA TREE	24" BOX MINIMUM	22 TOTAL	100 SQ. FT.
ACACIA MILGA MULGA TREE	8' HT, 4' SP, 1 1/2" CAL.		
PROSOPIA VELLUTINA NATIVE MESQUITE	24" BOX MINIMUM MULTI-TRUNK (7' HT, 4.5' SP.)	26 TOTAL	100 SQ. FT.
CERCIDIUM FLORIDUM BLUE PALO VERDE	24" BOX MINIMUM MULTI-TRUNK (7' HT, 4.5' SP.)	7 TOTAL	100 SQ. FT.
CERCIDIUM FLORIDUM BLUE PALO VERDE	36" BOX MINIMUM MULTI-TRUNK (10' HT, 6' SP.)	5 TOTAL	100 SQ. FT.
CAESALPINIA FULCHERRIMA RED BIRD OF PARADISE	5 GALLON	44 TOTAL	50 SQ. FT.
LEUCOPHYLLUM LANGMANIAE RIO BRAVO SAGE	5 GALLON FULL, PAST CAN	170 TOTAL	50 SQ. FT.
HEPERALOE X 'PERFU' (PINK PARADE) PINK PARADE	5 GALLON FULL, PAST CAN	52 TOTAL	10 SQ. FT.
RUELLIA BRITTONIANA CALIFORNICA RUELLIA	5 GALLON FULL, PAST CAN	18 TOTAL	50 SQ. FT.
LEUCOPHYLLUM LAEVIGATUM CHIHUAHUA SAGE	5 GALLON FULL, PAST CAN	160 TOTAL	50 SQ. FT.
SIMMONDSIA CHINENSIS 'VISTA' DWARF JOJOBA	5 GALLON FULL, PAST CAN	66 TOTAL	50 SQ. FT.
CASSIA STURTII GREEN DESERT CASSIA	5 GALLON FULL, PAST CAN	88 TOTAL	50 SQ. FT.
TECOMA STANS V. ORANGE JUBILEE ORANGE JUBILEE	5 GALLON FULL, PAST CAN	23 TOTAL	50 SQ. FT.
ACACIA REDOLENS 'D.C.' DESERT CARPET HYBRID REDOLENS	5 GALLON FULL, PAST CAN	130 TOTAL	25 SQ. FT.
MUHLENBERGIA CAPILLARIS 'REGAL MIST' PINK MUHLY	5 GALLON FULL, PAST CAN	18 TOTAL	10 SQ. FT.
EREMOPHYLLA GLABRA OUTBACK SUNRISE	5 GALLON FULL, PAST CAN	149 TOTAL	25 SQ. FT.
LANTANA SELLOUIANA 'T.P.' TRAILING PURPLE LANTANA	5 GALLON FULL, PAST CAN	214 TOTAL	10 SQ. FT.
DECOMPOSED GRANITE	1/2" SCREENED APACHE BROWN	99,305 SF.	3' DEEP
GRANITE COBBLE	4"-8" DIA SANTA FE GOLD	4,165 SF.	

NOTE: PLANT COVERAGE SHALL EQUAL 50% OF 97,505 SF. OF LANDSCAPE AREA USING THE ALLOWABLE AREA SHOWN IN SCHEDULE PER TABLE 11-33-21E, THE PLANT COVERAGE PROVIDED IS 49,375 SF. AND THE PLANT COVERAGE REQUIRED IS 48,752.5 SF.

BOULDER SCHEDULE:

- ⓐ 4'x4'x3" DEEP SELECT GRADE GRANITE SURFACE BOULDER (BURY 12")
- ⓑ 3'x3'x30" DEEP SELECT GRADE GRANITE SURFACE BOULDER (BURY 12")
- ⓒ 2'x2'x18" DEEP SELECT GRADE GRANITE SURFACE BOULDER (BURY 6")

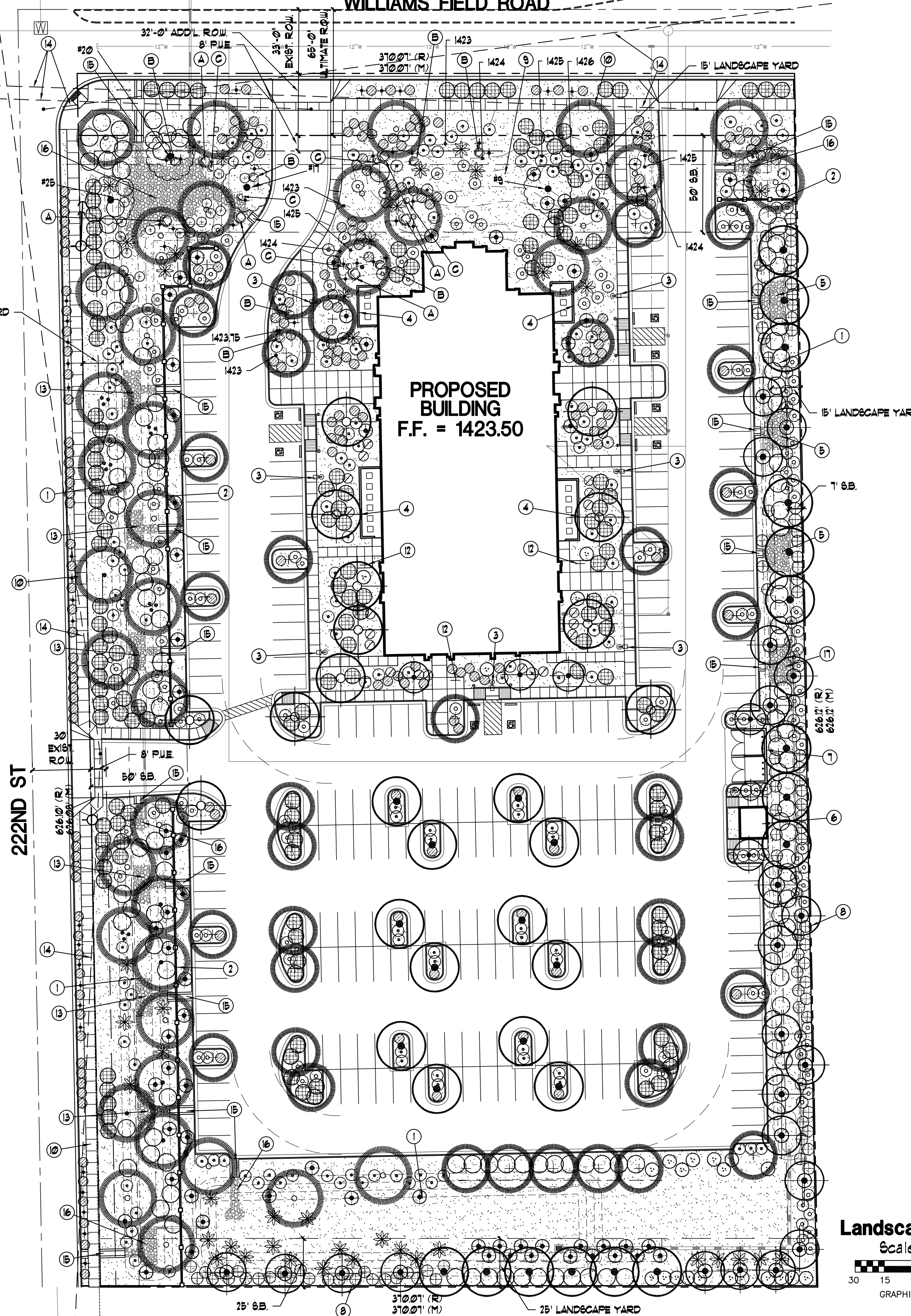
PLANTING NOTE:

DO NOT PLANT SHRUBS AND GROUNDCOVERS WITHIN 5' OF BUILDING WALLS AND EQUIPMENT ENCLOSURES.

PLAN KEY NOTES:

- ① RETENTION BASIN (SEE CIVIL DUGS.)
- ② PARKING SCREEN WALL (SEE ARCH. DUGS.)
- ③ SITE LIGHT (SEE ELECTRICAL DUGS.)
- ④ MECHANICAL ENCLOSURE
- ⑤ INSTALL AN 11'-4"x20" GRANITE COBBLE AT END OF SCUPPER IN BOTTOM OF BASIN (4'-8" DIA. SANTA FE GOLD COBBLE)
- ⑥ MAINTENANCE BUILDING
- ⑦ TRASH ENCLOSURE (SEE ARCH. DUGS.)
- ⑧ 6' HIGH MASONRY WALL (SEE ARCH. DUGS.)
- ⑨ MOUNDING TO GRADES SHOWN
- ⑩ 6' WIDE SIDEWALK
- ⑪ SELECT GRADE GRANITE SURFACE BOULDERS (SEE SCHEDULE FOR SIZES)
- ⑫ BIKE RACK (SEE ARCH. DUGS.)
- ⑬ INSTALL AN 8'-6"x20" GRANITE COBBLE AT END OF SCUPPER IN BOTTOM OF BASIN (4'-8" DIA. SANTA FE GOLD COBBLE)
- ⑭ SIGHT VISIBILITY LINE (NO SHRUBS TALLER THAN 36" IN HT. AND TREES TRIMMED UP TO 1' ABOVE FINISH GRADE) (WILLIAMS FIELD ROAD: 50 MPH, 222ND ST: 40 MPH)
- ⑮ DRAINAGE SCUPPER (SEE CIVIL DUGS.)
- ⑯ INSTALL GRANITE COBBLE AT END OF SCUPPER IN BOTTOM OF BASIN (4'-8" DIA. SANTA FE GOLD COBBLE)

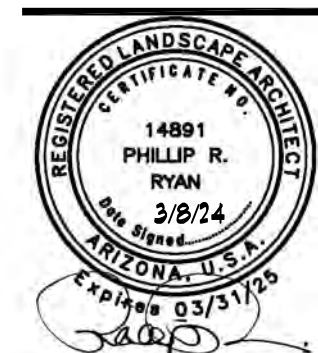
WILLIAMS FIELD ROAD



phillip r. ryan
landscape architect p.c.
landscape architecture & planning
4916 s. quiet way
gilbert, arizona 85298
(480) 246-9681
mail@ryanassociatesonline.net

Sketch
Architecture Company
2454 East Southern Avenue, Mesa, Arizona 85205, ph: 480.668.8015, fax: 480.668.8032

MESA ARIZONA EASTMARK GRANGER 250-4SC
THE CHURCH OF JESUS CHRIST OF LATTER-DAY SAINTS
MESA AZ EASTMARK STAKE
10621 E. WILLIAMSFIELD RD., MESA, AZ 85212
OWNERS PROPERTY NO. 50144272010101



Project Number
2023-29

LANDSCAPE
PLAN

Landscape Plan
Scale 1:30
30 15 0 30
GRAPHIC SCALE



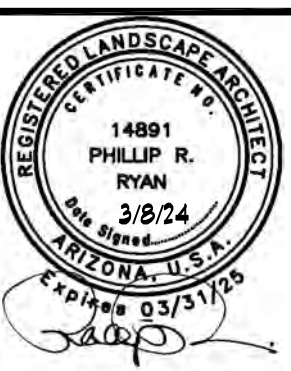
L-2

WILLIAMS FIELD ROAD

phillip r. ryan
 landscape architect p.c.
 landscape architecture & planning
 4916 s. quiet way
 gilbert, arizona 85298
 (480) 246-9681
 mail@ryanassociatesonline.net

Sketch
 Architecture Company
 2454 East Southern Avenue, Mesa, Arizona 85205, ph: 480.668.8016, fax: 480.668.8032

MESA ARIZONA EASTMARK GRANGER 250-4SC
 THE CHURCH OF JESUS CHRIST OF LATTER-DAY SAINTS
 MESA AZ EASTMARK STAKE
 10621 E. WILLIAMSFIELD RD., MESA, AZ 85212
 OWNER'S PROPERTY NO. 50144272010101



Project Number
 2023-29

IRRIGATION
 PLAN

L-3

IRRIGATION SCHEDULE: (FOR THIS SHEET ONLY)

EMITTERS:

- 6ALVAGE TREES: 2 EACH BOWSMITH ML-220 EMITTER PER TREE W/ 8 PORTS OPEN (16 G.P.H.), DETAIL 20
- 36" BOX TREES: 1 EACH BOWSMITH ML-220 EMITTER PER TREE W/ 6 PORTS OPEN (12 G.P.H.), DETAIL 20
- 24" BOX TREES: 1 EACH BOWSMITH ML-220 EMITTER PER TREE W/ 4 PORTS OPEN (8 G.P.H.), DETAIL 20
- 15 GALLON TREES: 1 EACH BOWSMITH ML-220 EMITTER PER TREE W/ 3 PORTS OPEN (6 G.P.H.), DETAIL 20
- 5 AND 1 GALLON SHRUBS: 1 EA. BOWSMITH 68-10 EMITTER PER PLANT (1 G.P.H.), DETAILS 21 & 22

VALVES, CONTROLLERS, AND ACCESSORIES

- ▲ HUNTER 10Z-101 DRIP VALVE ASSEMBLY, DETAIL 14
- ▲ HUNTER 12C-800M 8-STATION BASE CONTROLLER W/ (1) 1CM-400 OUTPUT MODULE FOR 12 STATIONS TOTAL (WALL MOUNT- HARD WIRE), DETAILS 18 & 19
- AG PRODUCTS MANUAL FLUSH VALVE DETAIL 23
- 1" FEBCO 825YA REDUCED PRESSURE BACKFLOW PREVENTION UNIT, DETAIL 17
- HUNTER 10V-101G REMOTE CONTROL VALVE, DETAIL 14, 61M.
- RAINBIRD 3RC-3/4" QUICK COUPLING VALVE (INCLUDE (1) ONE 33DK-3/4" NPT DOUBLE LUG GCV VALVE KEY AND 6HO-5H HOSE SWIVEL- 3/4" FEMALE PIPE X 3/4" MALE HOSE THREAD, DETAIL 12

PIPING:

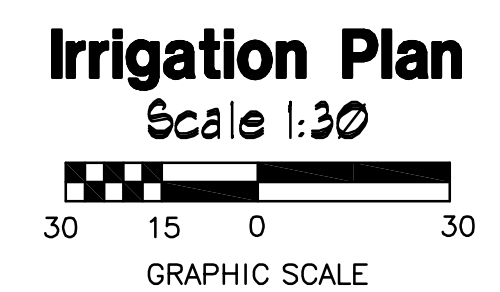
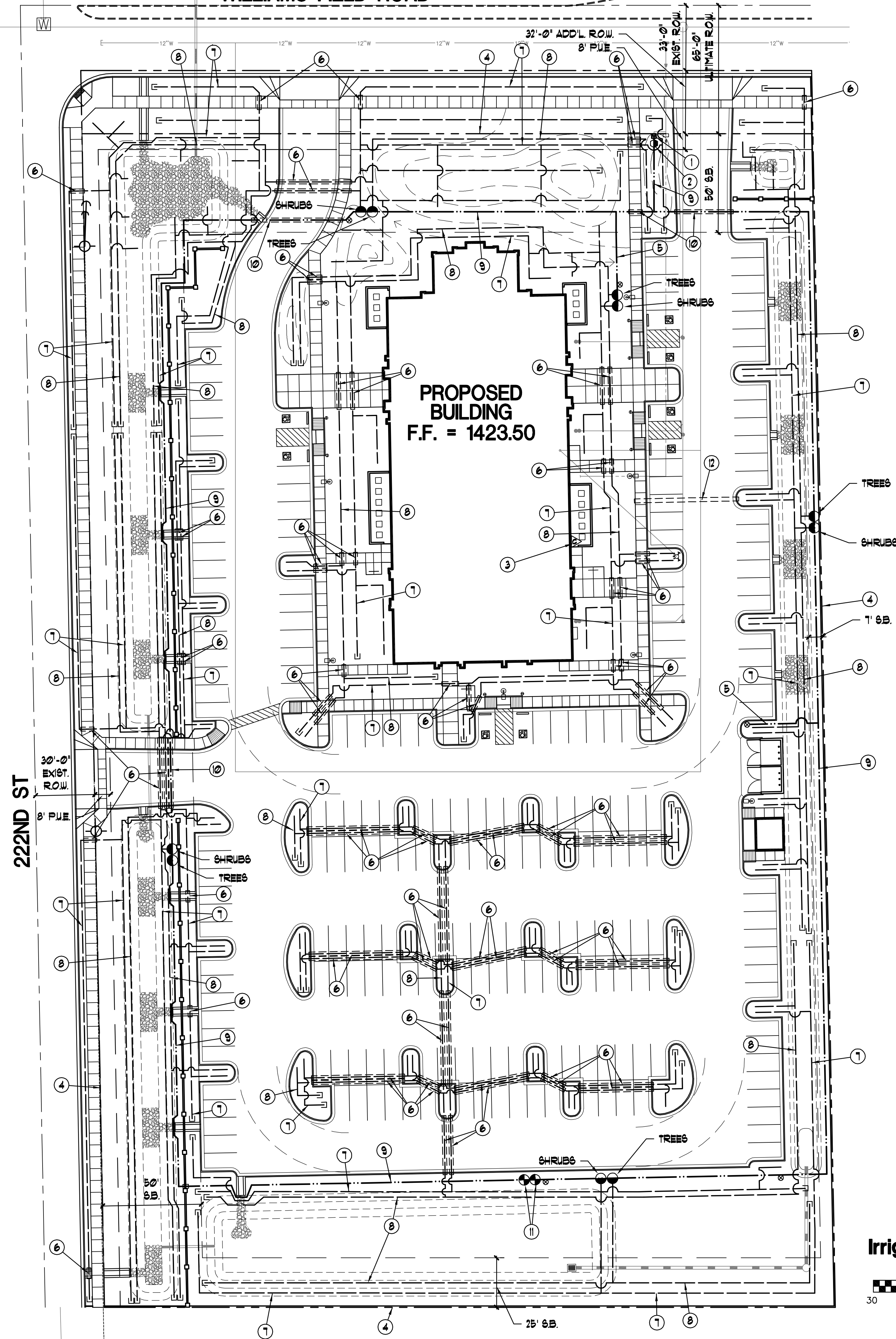
- MAINLINE (SCHEDULE 40 PVC- SEE PLAN FOR SIZE), DETAIL 10
- - - SCHEDULE 40 PVC SLEEVE UNDER DRIVEWAYS AND CLASS 200 PVC SLEEVES UNDER SIDEWALKS (SIZE PER PLAN), DETAIL 9
- 6CH. 40 PVC LATERALS (3/4" SCH. 40 PVC FOR EMITTER DISTRIBUTION LINE), DETAIL 10

PLAN KEY NOTES: (FOR THIS SHEET ONLY)

- ① 1" WATER METER FOR IRRIGATION SYSTEM
- ② 1" BACKFLOW PREVENTION UNIT FOR LANDSCAPE IRRIGATION
- ③ INSTALL HUNTER 12 STATION CONTROLLER ON WALL & COORDINATE POWER TO CONTROLLER W/ GENERAL BLDG. CONTRACTOR (SEE IRRIGATION SCHEDULE)
- ④ PROPERTY LINE
- ⑤ 1" SCH. 40 PVC MAINLINE
- ⑥ 2" CLASS 200 PVC SLEEVE UNDER SIDEWALKS
- ⑦ 3/4" SCH. 40 PVC EMITTER DISTRIBUTION LINE FOR SHRUBS
- ⑧ 3/4" SCH. 40 PVC EMITTER DISTRIBUTION LINE FOR TREES
- ⑨ 1 1/2" SCH. 40 PVC MAINLINE
- ⑩ 3" SCH. 40 PVC SLEEVE FOR MAINLINE & 3" SCH. 40 PVC SLEEVE FOR VALVE CABLE
- ⑪ INSTALL (2) TWO HUNTER 10V-101G REMOTE CONTROL VALVES FOR FUTURE LAWN AREA, DETAIL 14, 61M. (PROVIDE CABLE FROM CONTROLLER TO VALVES)
- ⑫ 3" SCH. 40 PVC SLEEVE FOR VALVE CABLE

GENERAL NOTES:

- A. ALL VALVE WIRING SHALL BE UP UL DIRECT BURIAL, SOLID COPPER VALVE WIRING WILL BE A 2-WIRE SYSTEM.
- B. CONTRACTOR SHALL INSTALL ALL VALVE WIRING FROM CONTROLLER TO ALL VALVES IN MAINLINE TRENCH. IF WIRING LEAVES MAINLINE TRENCH, ENCLOSE INSIDE SCHEDULE 40 PVC PIPE.
- C. UNLESS SPECIFIED ON PLANS FOR REMOVAL, THE CONTRACTOR SHALL BE RESPONSIBLE FOR:
 - 1. DAMAGE TO UTILITIES CAUSED AS A RESULT OF HIS WORK
 - 2. FROM DAMAGES TO EXISTING WALKS, WALLS, DRIVES, CURBS, ETC.
 - 3. INSPECTING THE SITE IN ORDER TO BE FULLY AWARE OF EXISTING CONDITIONS PRIOR TO SUBMITTING HIS BID
- D. THE CONTRACTOR SHALL MAINTAIN UNCOVERED, ALL EXISTING UTILITY COVERS, BOXES, LIDS AND MANHOLES.
- E. ALL EQUIPMENT AND MATERIALS NOT SHOWN OR SPECIFIED IN THE PLANS OR IN THE SPECIFICATIONS WHICH ARE REQUIRED TO COMPLETE THE INSTALLATION, SHALL BE SUPPLIED BY THE CONTRACTOR AS PART OF HIS CONTRACT WORK.
- F. INDIVIDUAL EMITTERS ARE NOT SHOWN ON PLAN FOR CLARITY. COORDINATE WITH PLACEMENT OF TREES AND SHRUBS AND INSTALL EMITTERS TO PLANTS AS SPECIFIED IN IRRIGATION SCHEDULE.
- G. SEE SHEETS L-4, L-5, L-6 & L-7 FOR IRRIGATION DETAILS.
- H. SEE CONTRACT MANUAL FOR IRRIGATION SPECIFICATIONS.



phillip r. ryan
 landscape architect p.c.
 landscape architecture & planning
 4916 s. quiet way
 gilbert, arizona 85298
 (480) 246-9681
 mail@ryanassociatesonline.net

Sketch
 Architecture Company
 2454 East Southern Avenue, Mesa, Arizona 85205, ph: 480.668.8015 fax: 480.668.8022

MESA ARIZONA EASTMARK GRANGER 250-4SC
 THE CHURCH OF JESUS CHRIST OF LATTER-DAY SAINTS
 MESA AZ EASTMARK STAKE
 10621 E. WILLIAMSFIELD RD., MESA, AZ 85212
 OWNER'S PROPERTY NO. 50144272010101



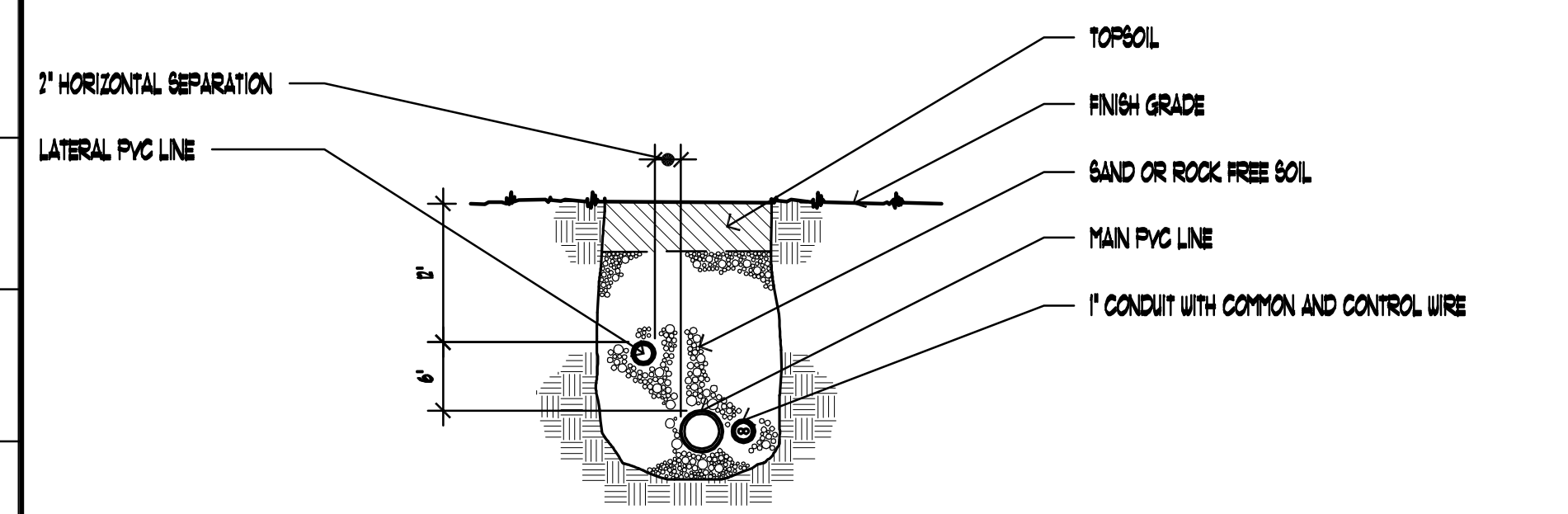
Project Number
 2023-29

LANDSCAPE &
 IRRIGATION
 DETAILS

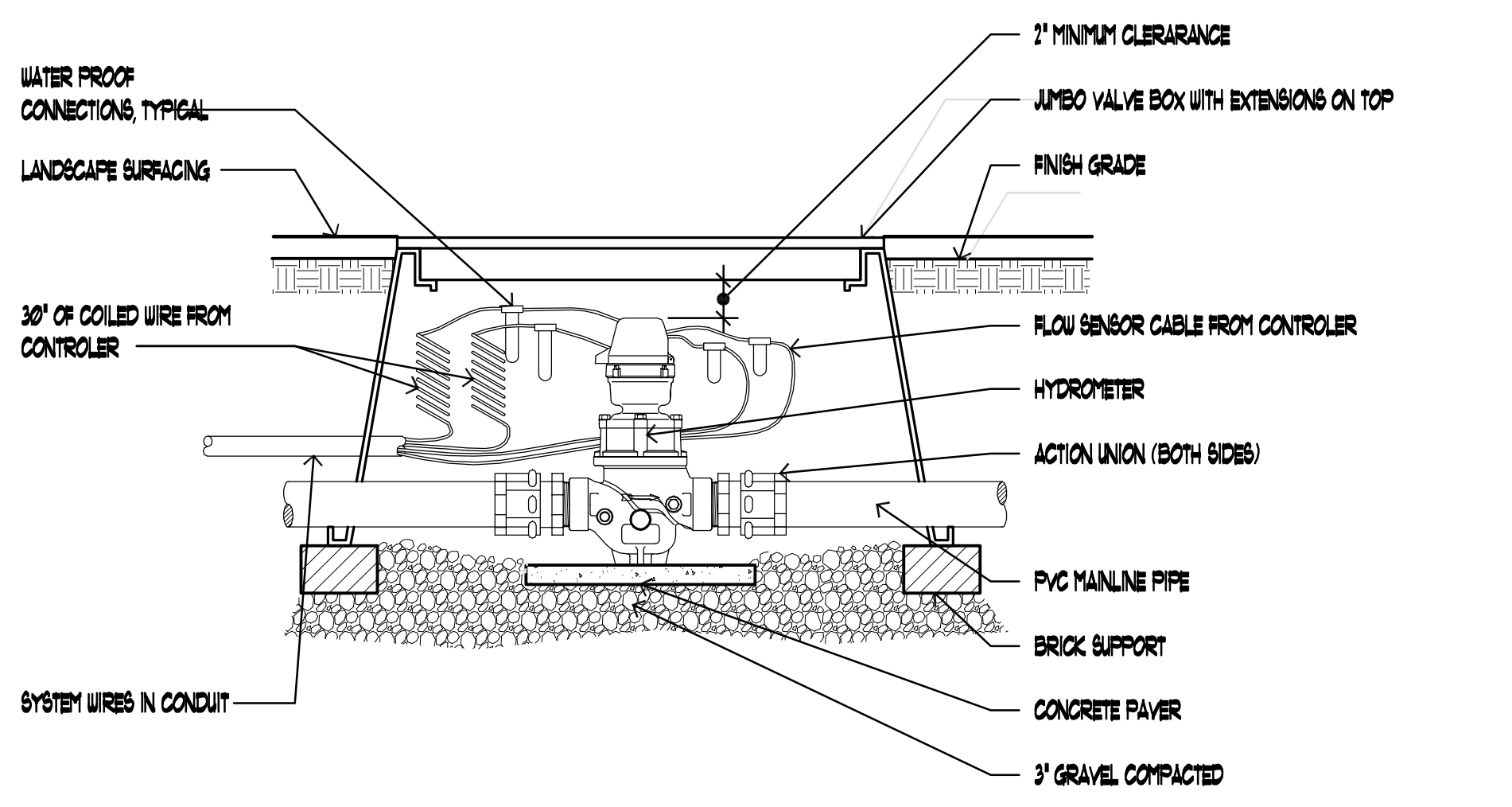
L-5

32 31 30 29 28 27 26 25 24 23 22 21 20 19 18 17 16 15 14 13 12 11 10 9 8 7 6 5 4 3

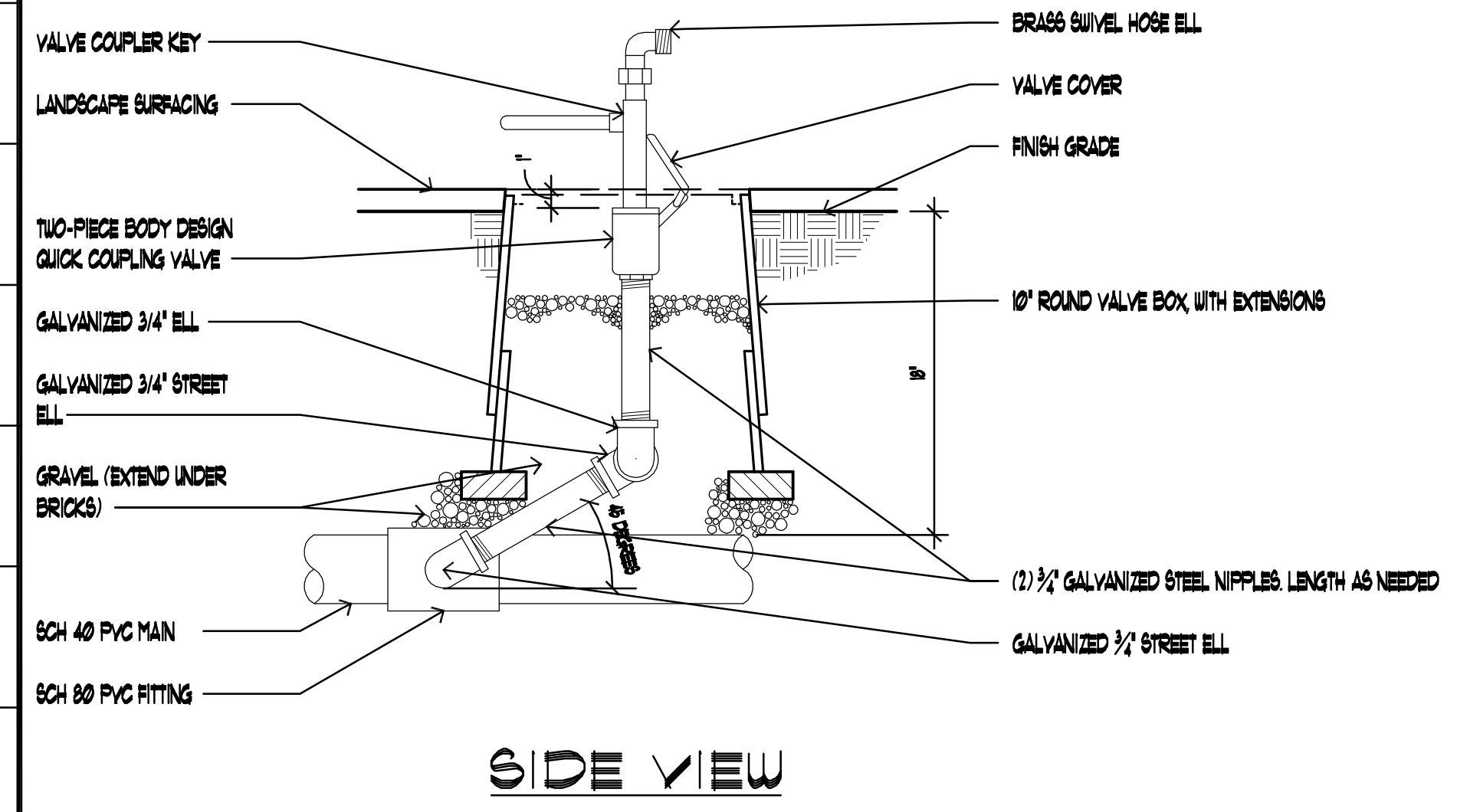
A B C D E F G H I J K L M N O P Q R S T U V W X



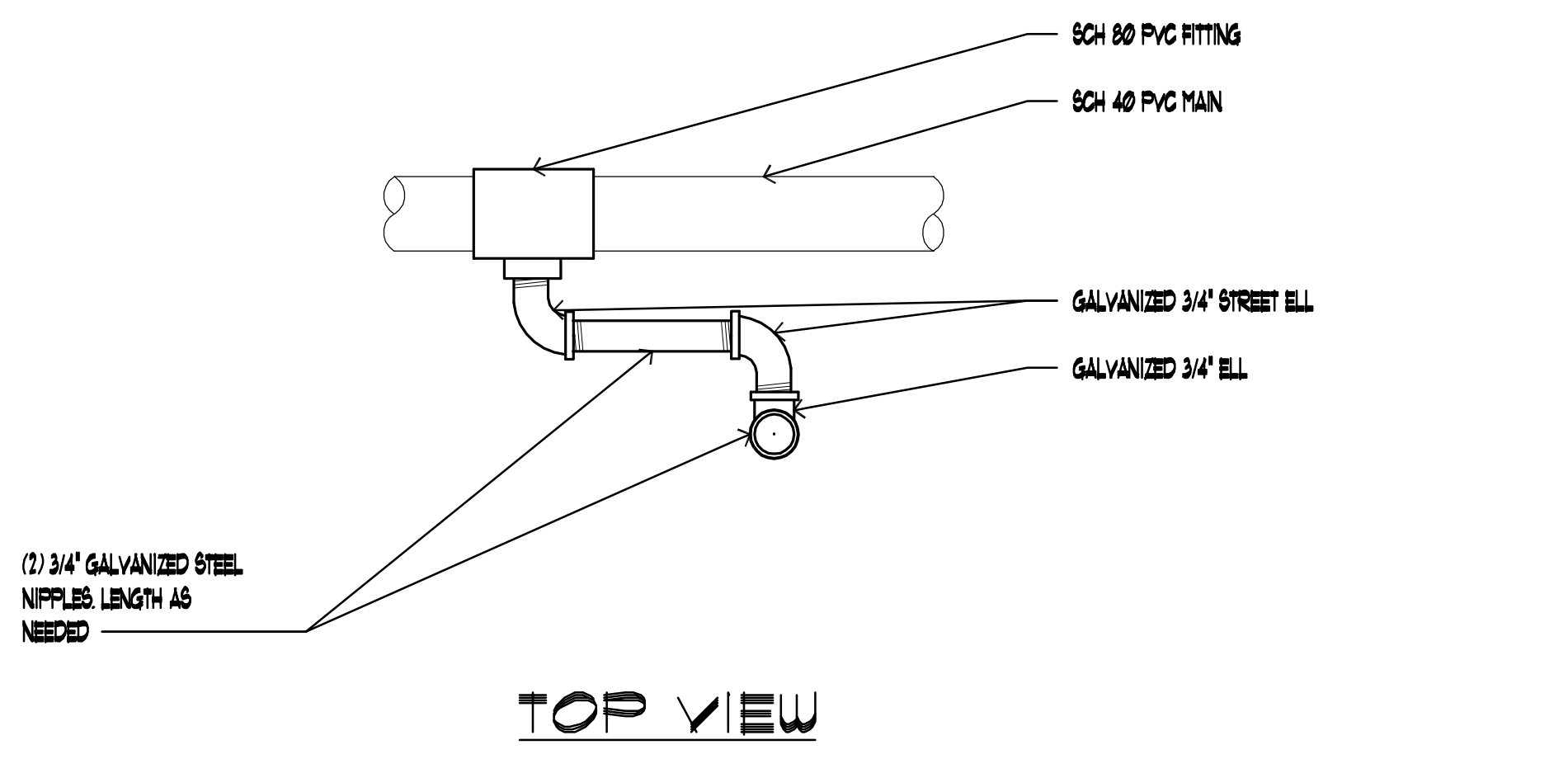
10 TRENCH SECTION
 TWO WIRE SYSTEM SCALE: N.T.S.



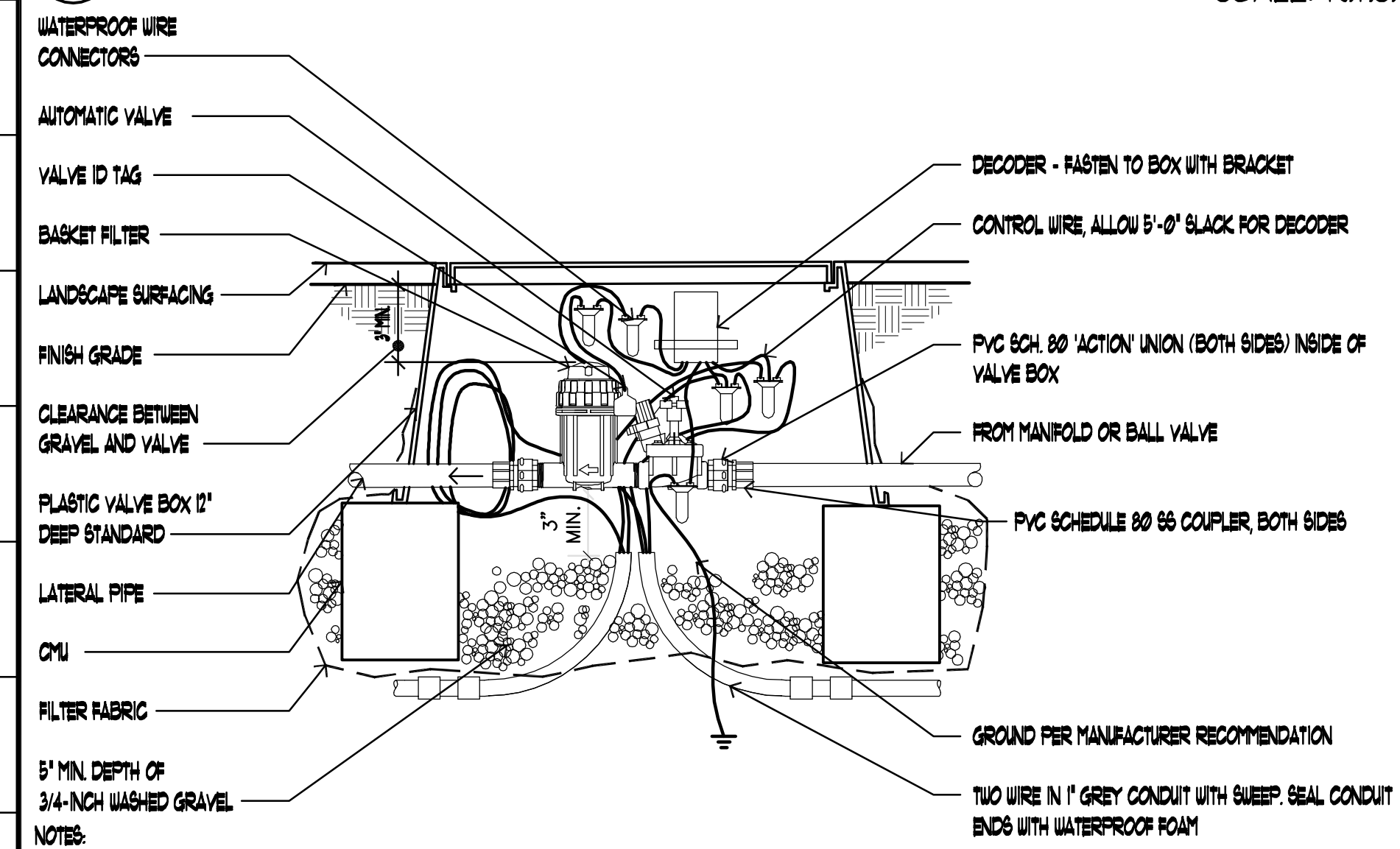
11 HYDROMETER SCALE: N.T.S.



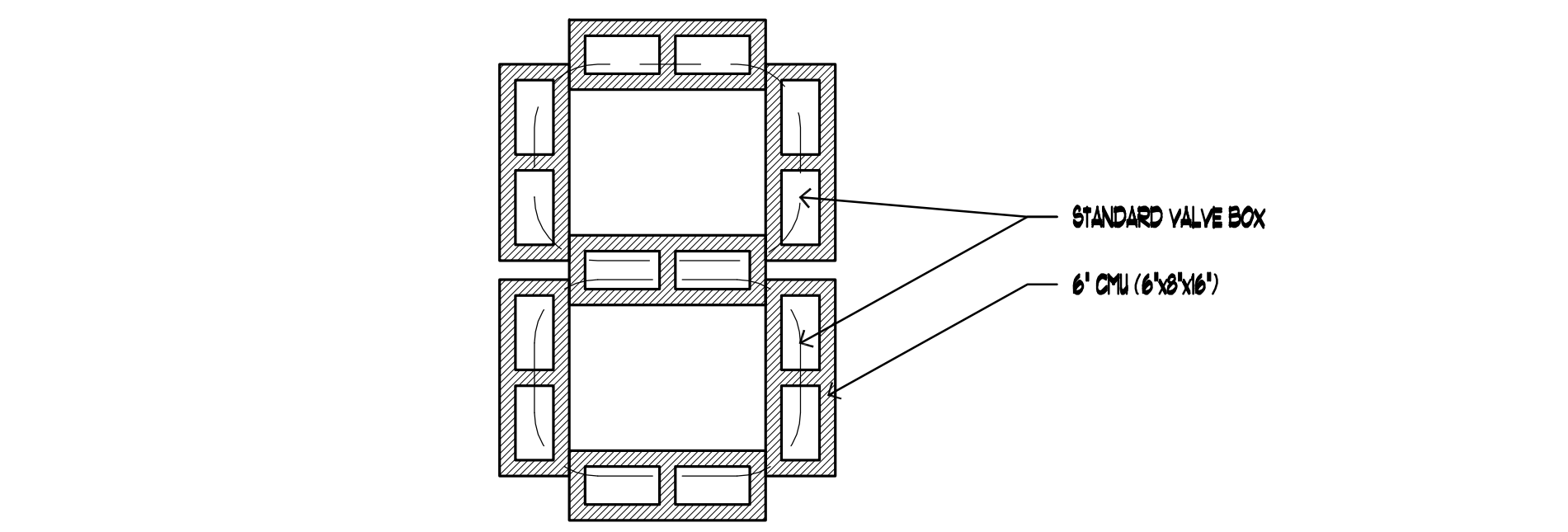
12 QUICK COUPLING VALVE SCALE: N.T.S.



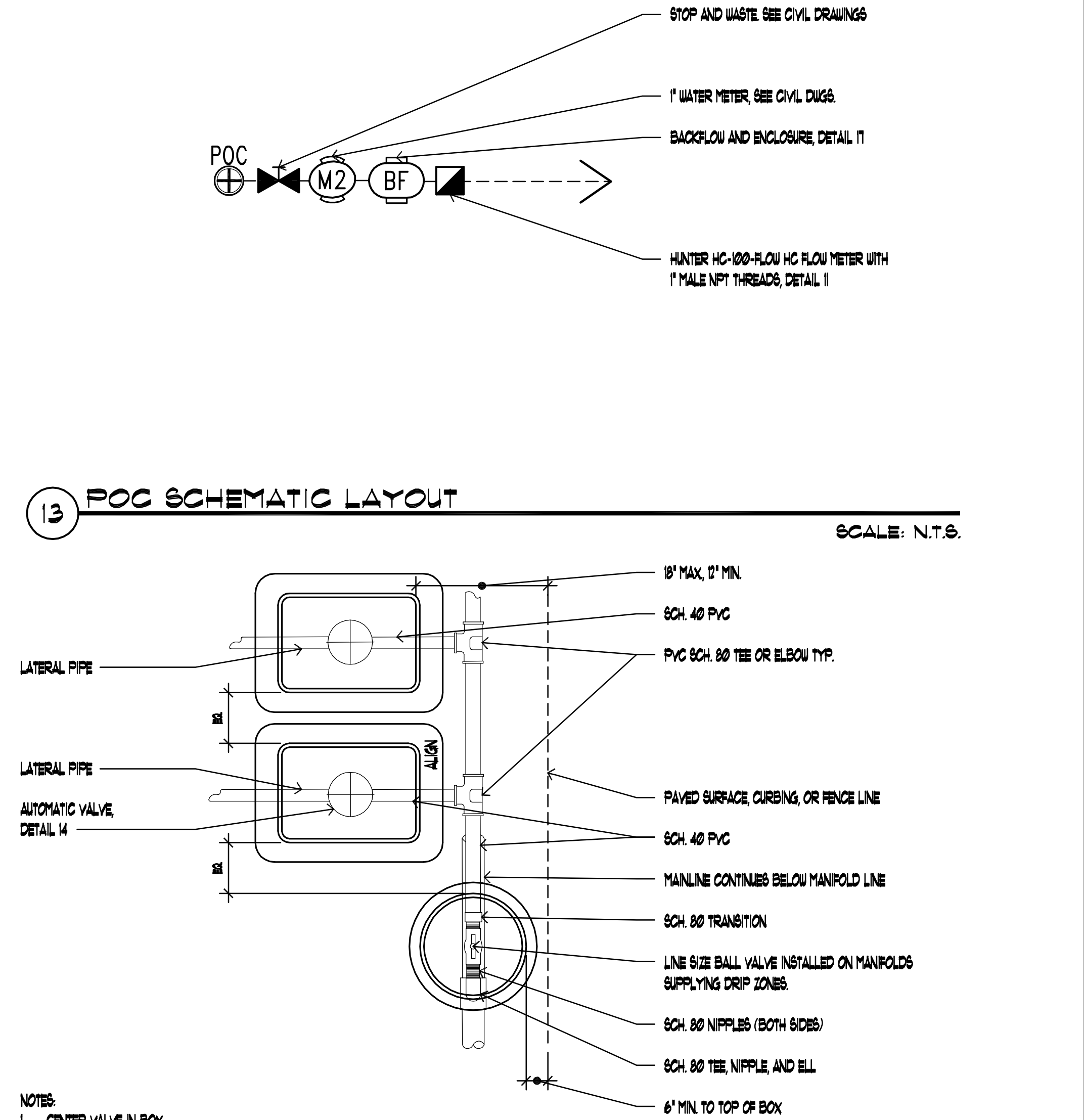
13 POC SCHEMATIC LAYOUT SCALE: N.T.S.



14 DRIP VALVE ASSEMBLY - SECTION
 TWO WIRE SYSTEM SCALE: N.T.S.



15 CMU PLACEMENT SCALE: N.T.S.

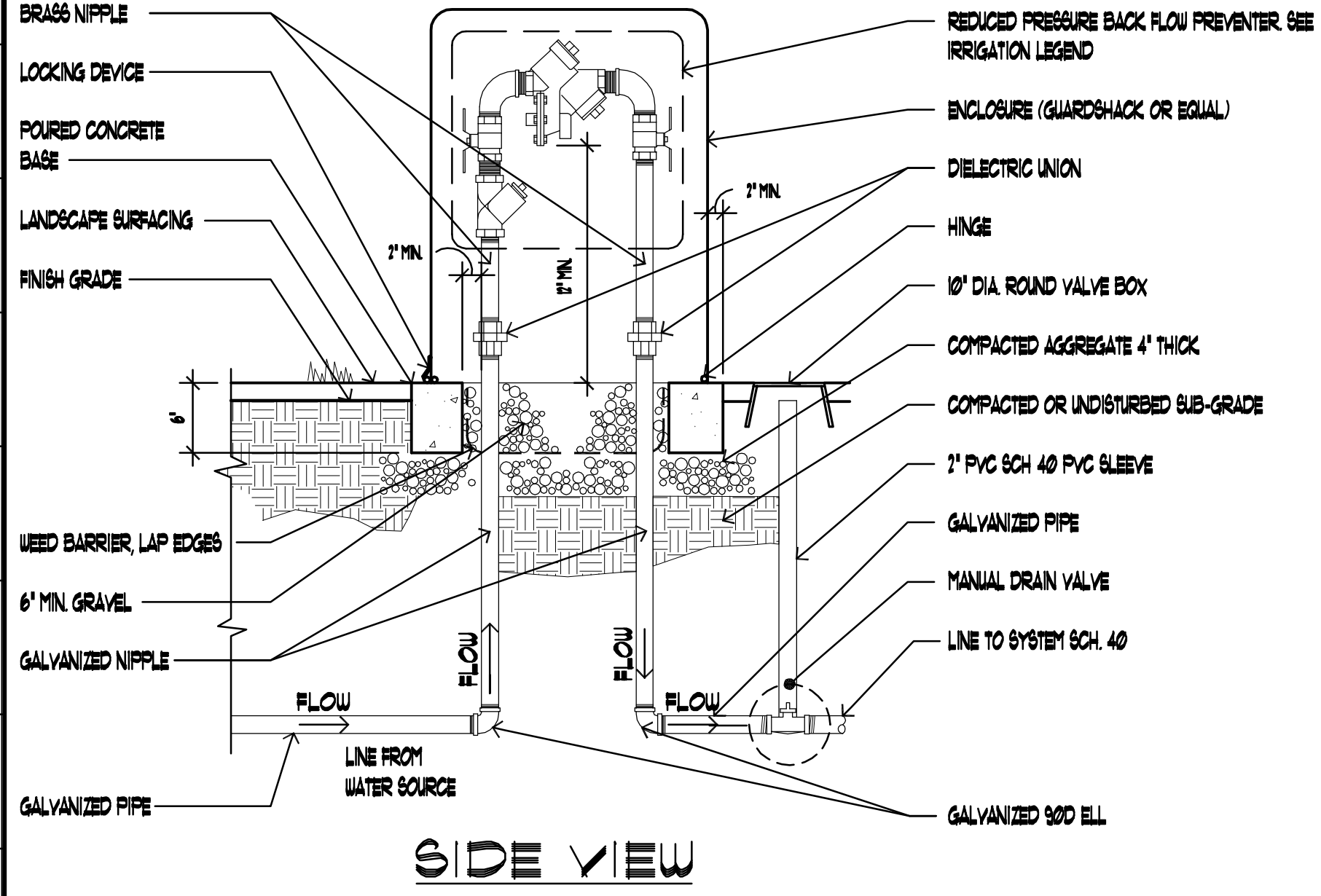


16 MANIFOLD AND VALVE ASSEMBLY SCALE: N.T.S.

NOTES:
 1. VALVE BOX TO REST ON (4) CMU BLOCKS (ONE FOR EACH SIDE).
 2. CLUSTERED VALVE BOXES MAY SHARE A CMU BLOCK.

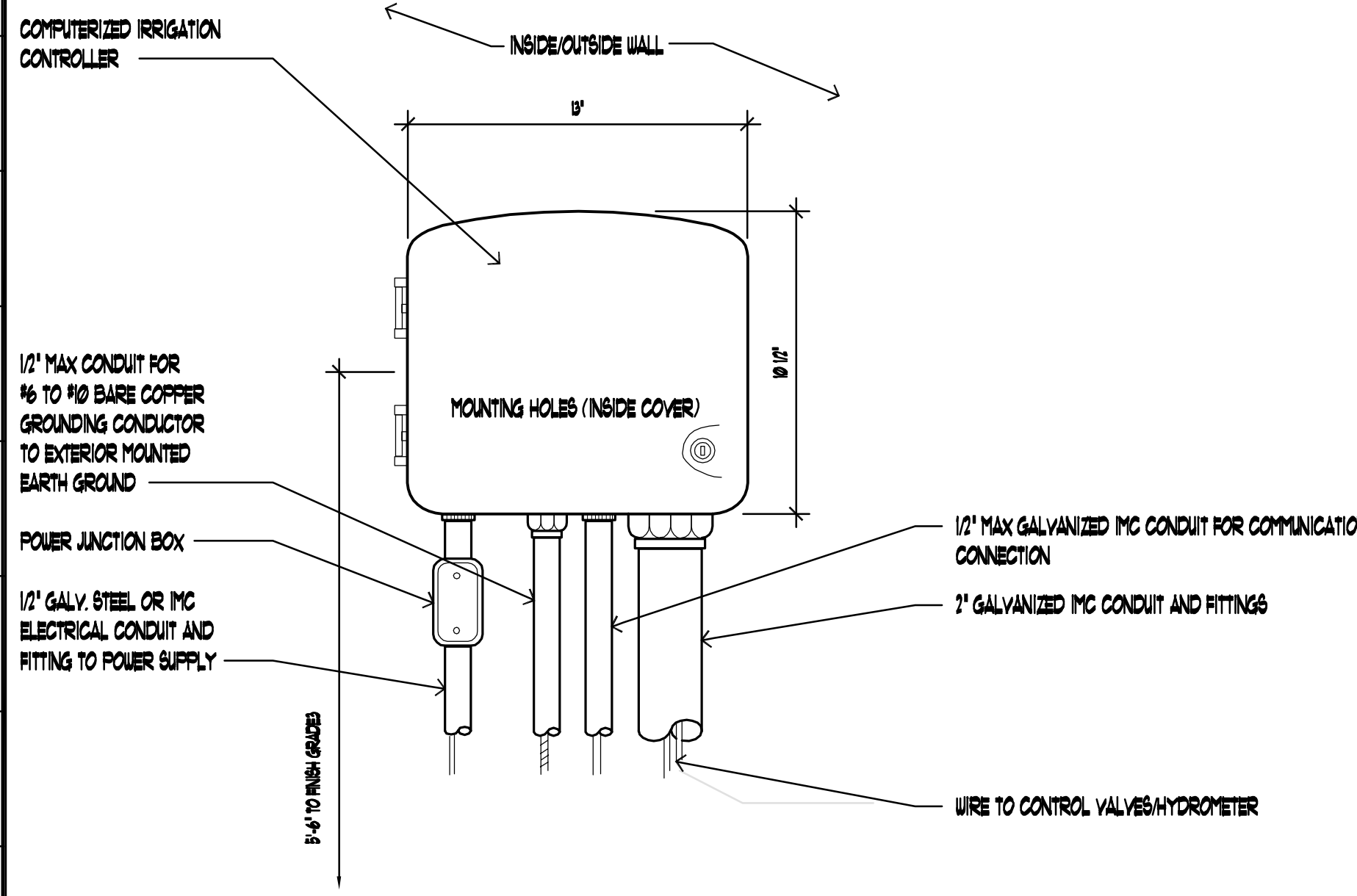
NOTES:
 1. CENTER VALVE IN BOX.
 2. WIRING NOT SHOWN. INSTALL AS PER CONVENTIONAL OR TWO-WIRE AUTOMATIC VALVE SECTIONS (GL501 & FL504).

COMPANY OF ARCHITECTS OF ARIZONA, A LICENSED PROFESSIONAL SERVICE PROVIDER, HAS REVIEWED THIS DOCUMENT AND CONFIRMS THAT THE INFORMATION CONTAINED HEREIN IS THE PROPERTY OF PHILLIP R. RYAN, LANDSCAPE ARCHITECT P.C. AND IS NOT TO BE REPRODUCED OR TRANSMITTED IN ANY FORM OR BY ANY MEANS, ELECTRONIC OR MECHANICAL, INCLUDING PHOTOCOPYING, RECORDING, OR BY ANY INFORMATION STORAGE AND RETRIEVAL SYSTEM, WITHOUT THE WRITTEN PERMISSION OF PHILLIP R. RYAN, LANDSCAPE ARCHITECT P.C.

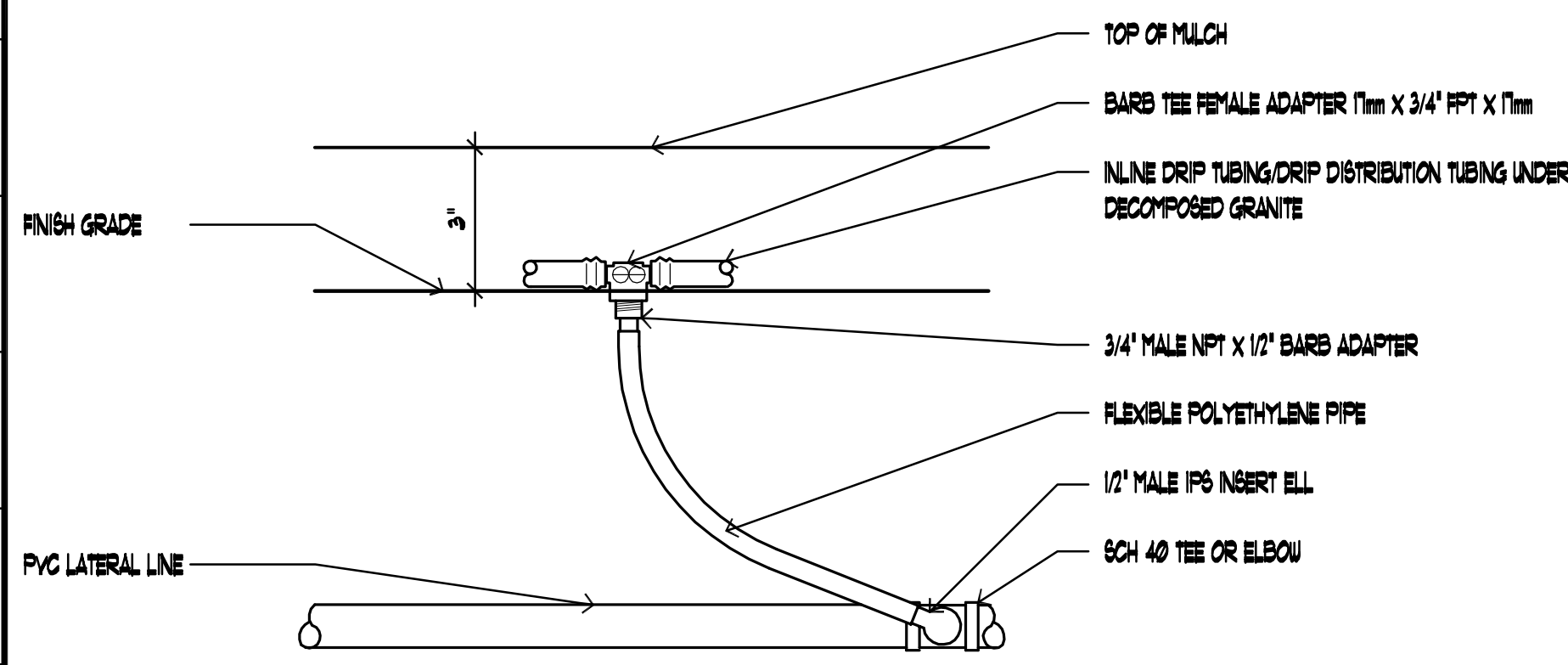


SIDE VIEW

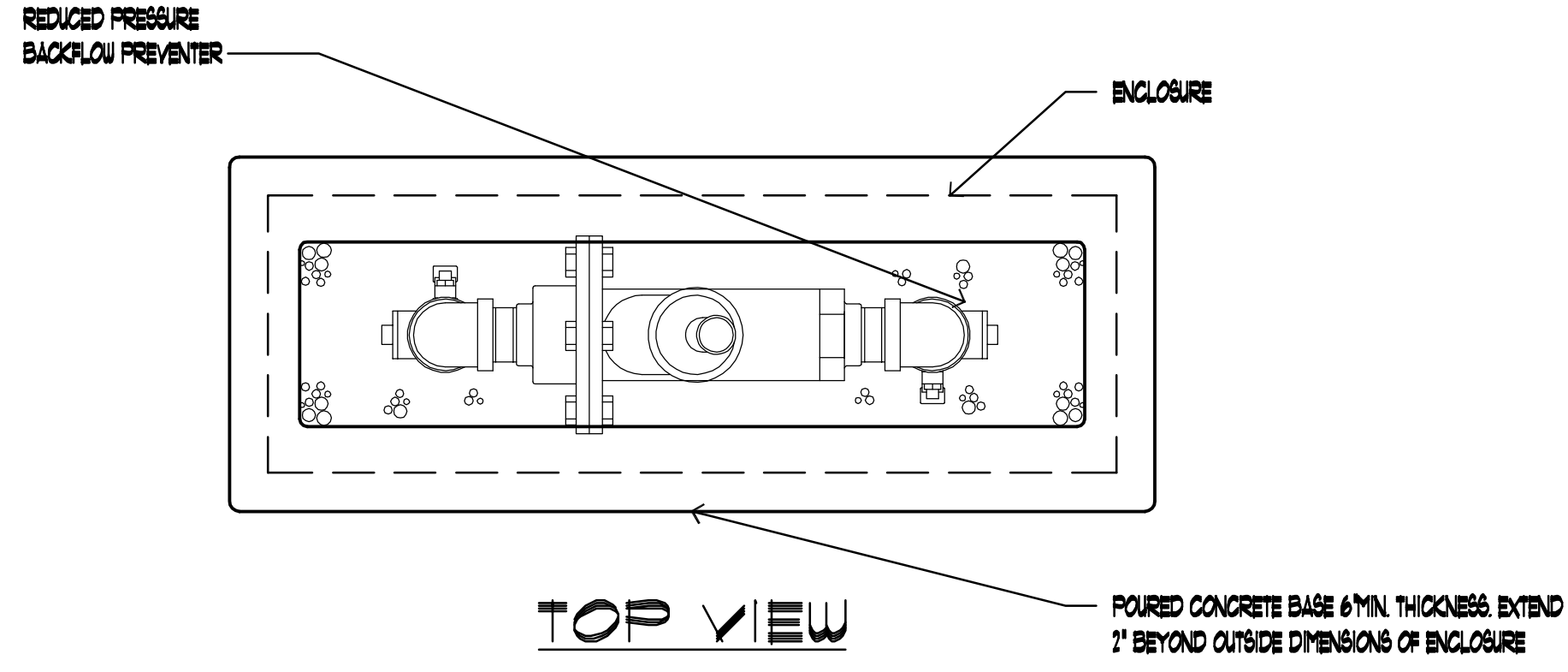
17 REDUCED PRESSURE BACKFLOW PREVENTOR
INSTALLATION SHALL BE IN ACCORDANCE WITH C.O.M. SCALE: N.T.S.



19 SMART CONTROLLER
SCALE: N.T.S.

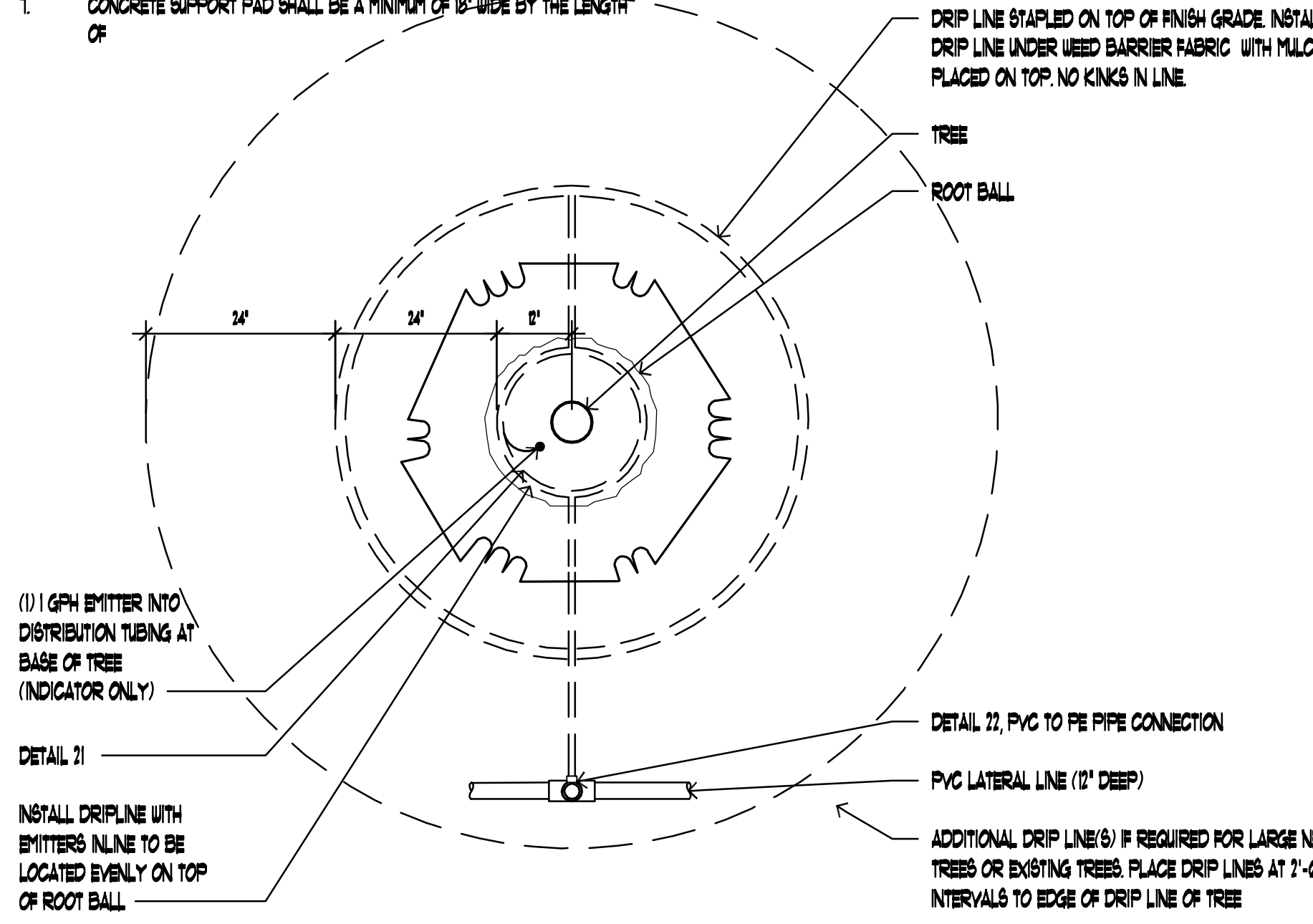


22 PVC TO PE PIPE CONNECTION
SCALE: N.T.S.

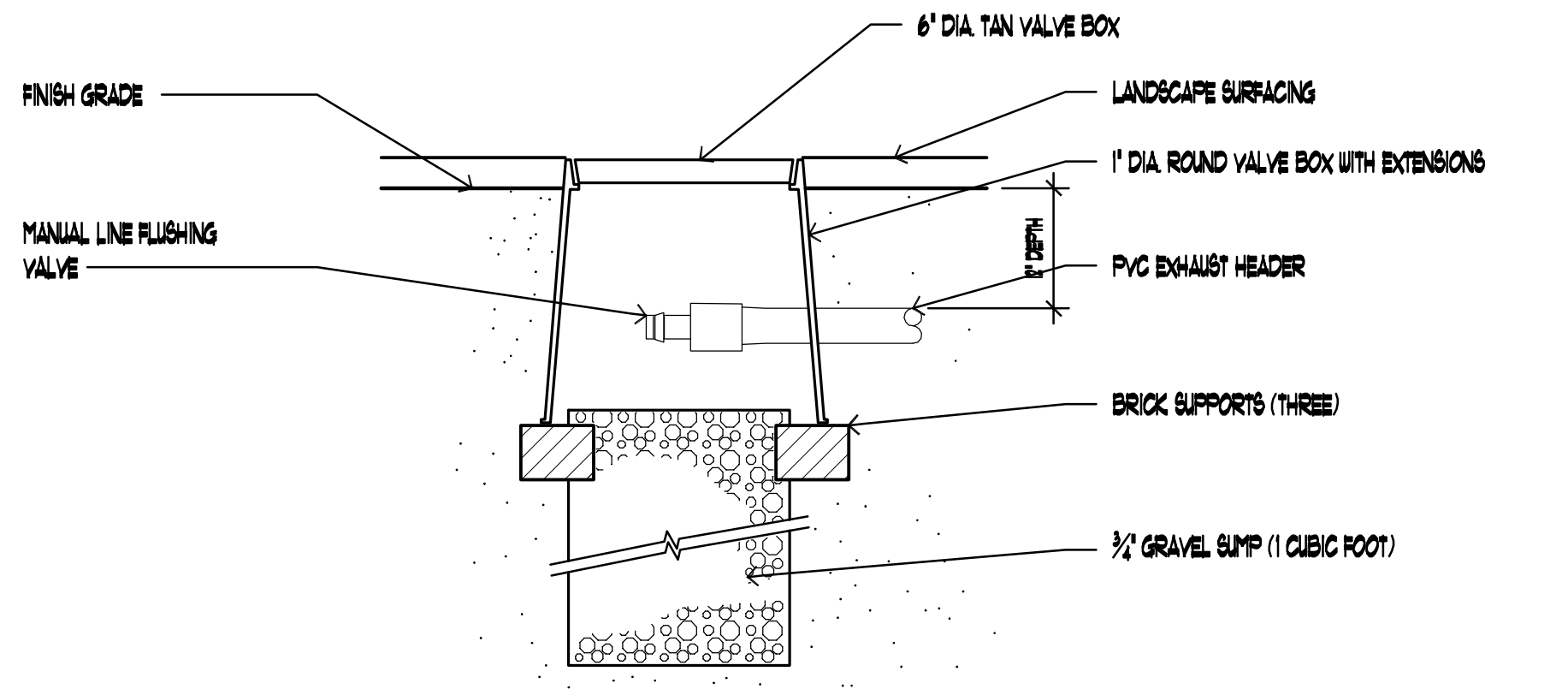


TOP VIEW

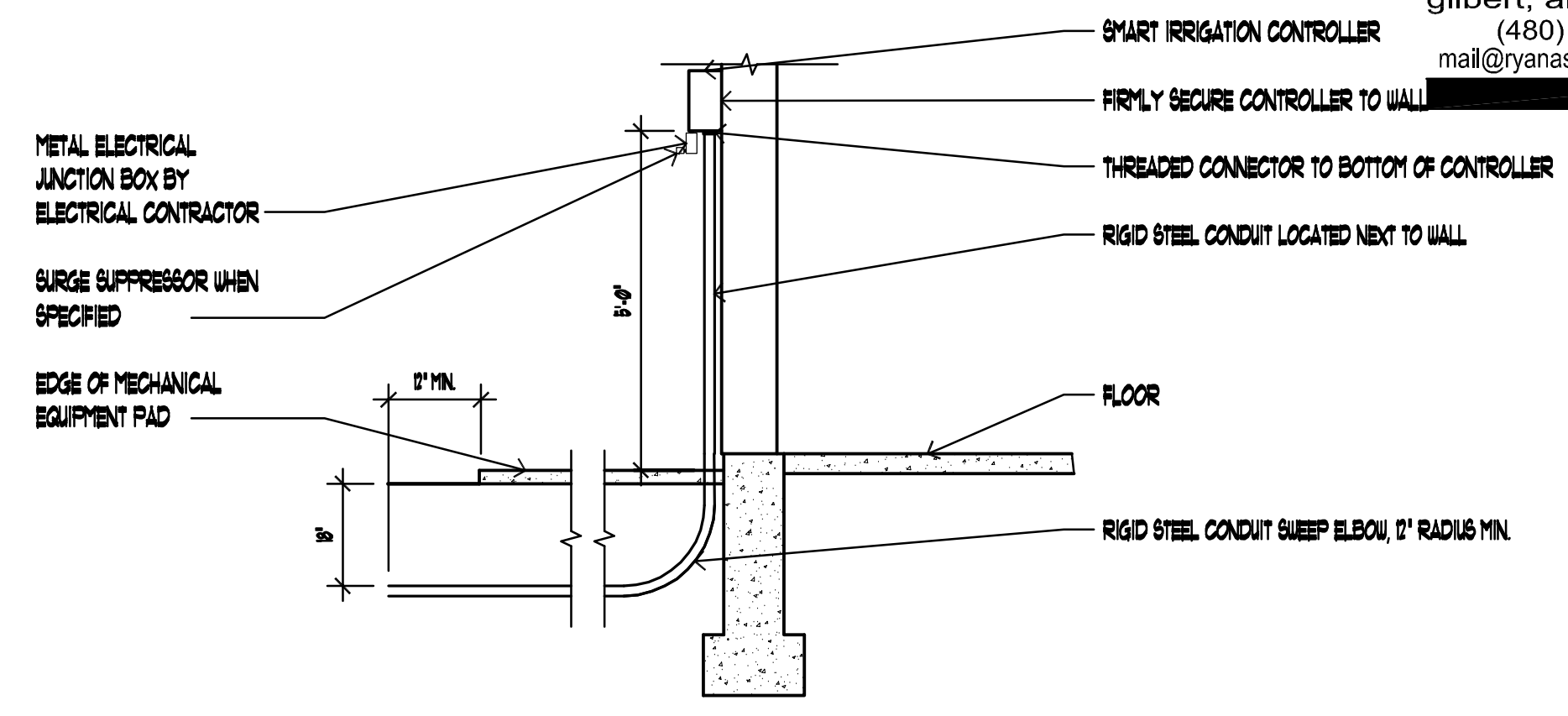
- GENERAL NOTES**
- CONTACT THE TOWN OF GILBERT BACKFLOW PREVENTION DEPARTMENT FOR THE MOST CURRENT LIST OF APPROVED BACKFLOW PREVENTION ASSEMBLIES. ASSEMBLY SHALL BE APPROVED BY U.S.C. FOUNDATION FOR CROSS CONNECTION AND HYDRAULIC RESEARCH.
 - ABOVE GROUND INSTALLATIONS SHALL BE PROTECTED BY GUARD POSTS, AS REQUIRED. SEE TOWN OF GILBERT DETAIL 83-B.
 - ASSEMBLY SHALL BE INSTALLED LEVEL AND NOT IN A FLOOD PLAIN.
 - ASSEMBLY SHALL BE TESTED PRIOR TO BEING ACCEPTED. (CONTACT THE TOWN OF GILBERT BACKFLOW PREVENTION DEPARTMENT FOR A LIST OF CERTIFIED TESTERS.)
 - ASSEMBLY SHALL NOT BE INSTALLED ANY CLOSER THAN 24" FROM A WALL OR OBSTRUCTION (IF TEST COCKS FACE THE WALL) OR 12" FROM A WALL (IF TEST COCKS FACE AWAY).
 - CONCRETE SUPPORT PAD SHALL BE A MINIMUM OF 18" WIDE BY THE LENGTH OF THE PRESSURE ASSEMBLY.
 - FINISH GRADE UNDERNEATH THE ASSEMBLY SHALL BE AT 85% COMPACTION.
 - ASSEMBLY SHALL NOT BE PLACED FURTHER THAN 2' FROM THE WATER METER.
 - PIPE CONNECTIONS BETWEEN THE BACKFLOW ASSEMBLY AND THE METER SHALL BE OF TYPE "K" COPPER.
 - NO LESS THAN 36" OF COPPER SHALL EXIST DOWNSTREAM OF BACKFLOW.
 - EPA - SDCA SECTION 141 (G), AMENDED 1-4-2014: ALL (NET) DOMESTIC BRASS PLUMBING FIXTURES NOT LIMITED TO BACKFLOW PREVENTION ASSEMBLIES SHALL CONTAIN NO GREATER THAN 0.03% TOTAL LEAD CONTENT.



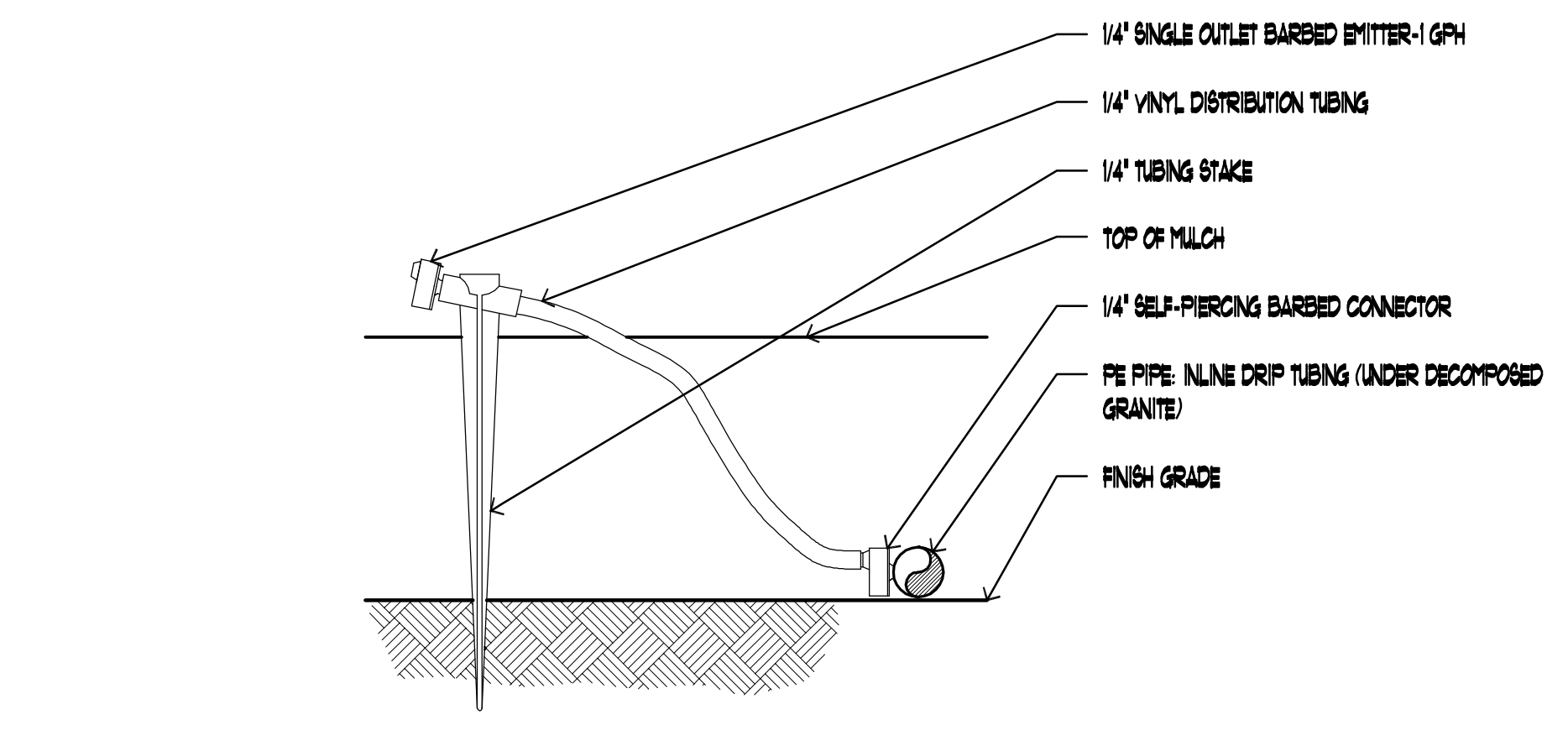
20 TREE DRIP - PLAN VIEW (PLANTER AREAS)
SCALE: N.T.S.



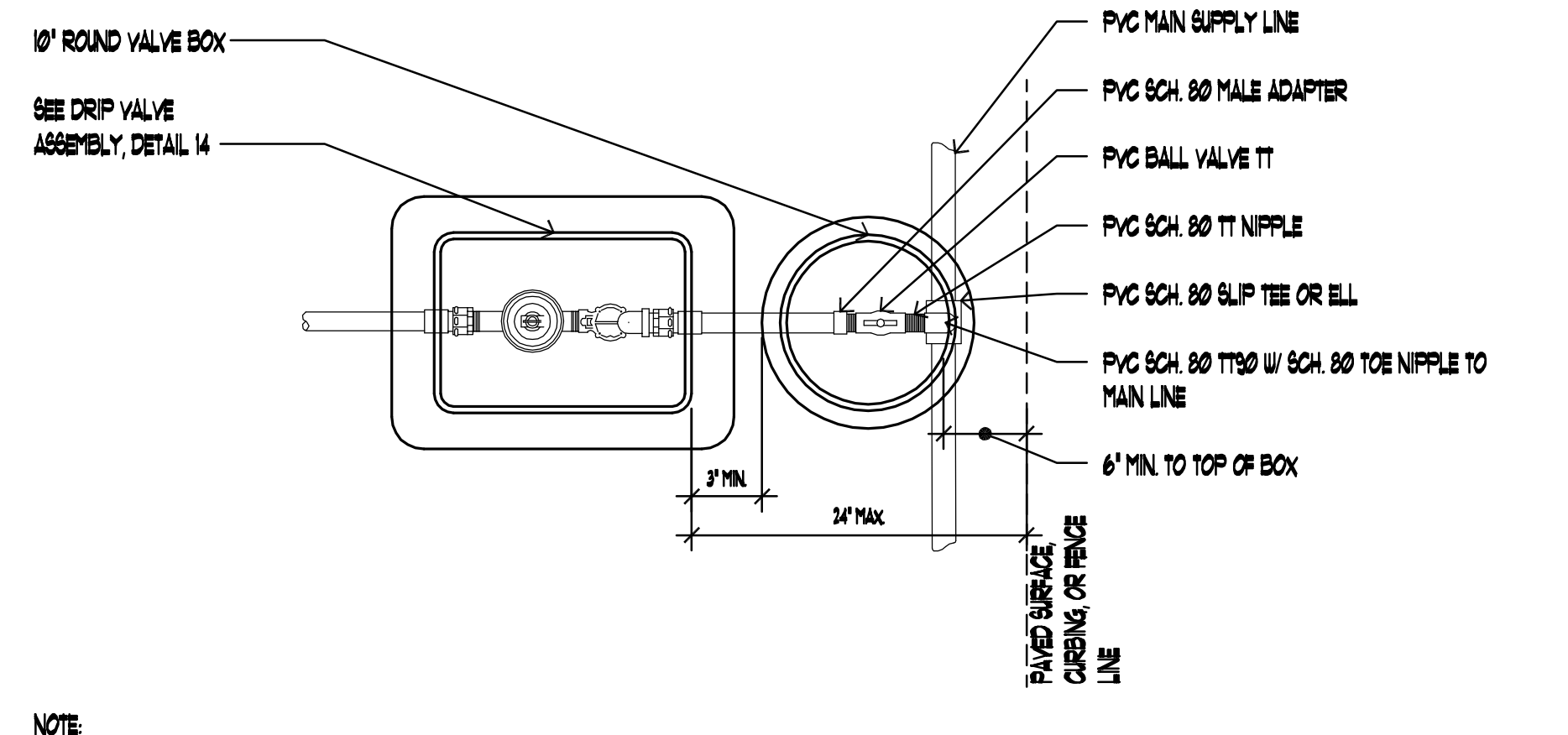
23 INLINE DRIP FLUSH VALVE
SCALE: N.T.S.



18 IRRIGATION CONTROLLER EXTERIOR MOUNT
SCALE: N.T.S.



21 EMITTER INTO DISTRIBUTION TUBING
SCALE: N.T.S.



24 DRIP VALVE ASSEMBLY
SCALE: N.T.S.

phillip r. ryan
landscape architect p.c.
landscape architecture & planning
4916 s. quiet way
gilbert, arizona 85298
(480) 246-9681
mail@ryanassociatesonline.net

Sketch
Architecture Company
2424 East Southern Avenue, Mesa, Arizona 85205, ph: 480.668.8115 fax: 480.668.8122

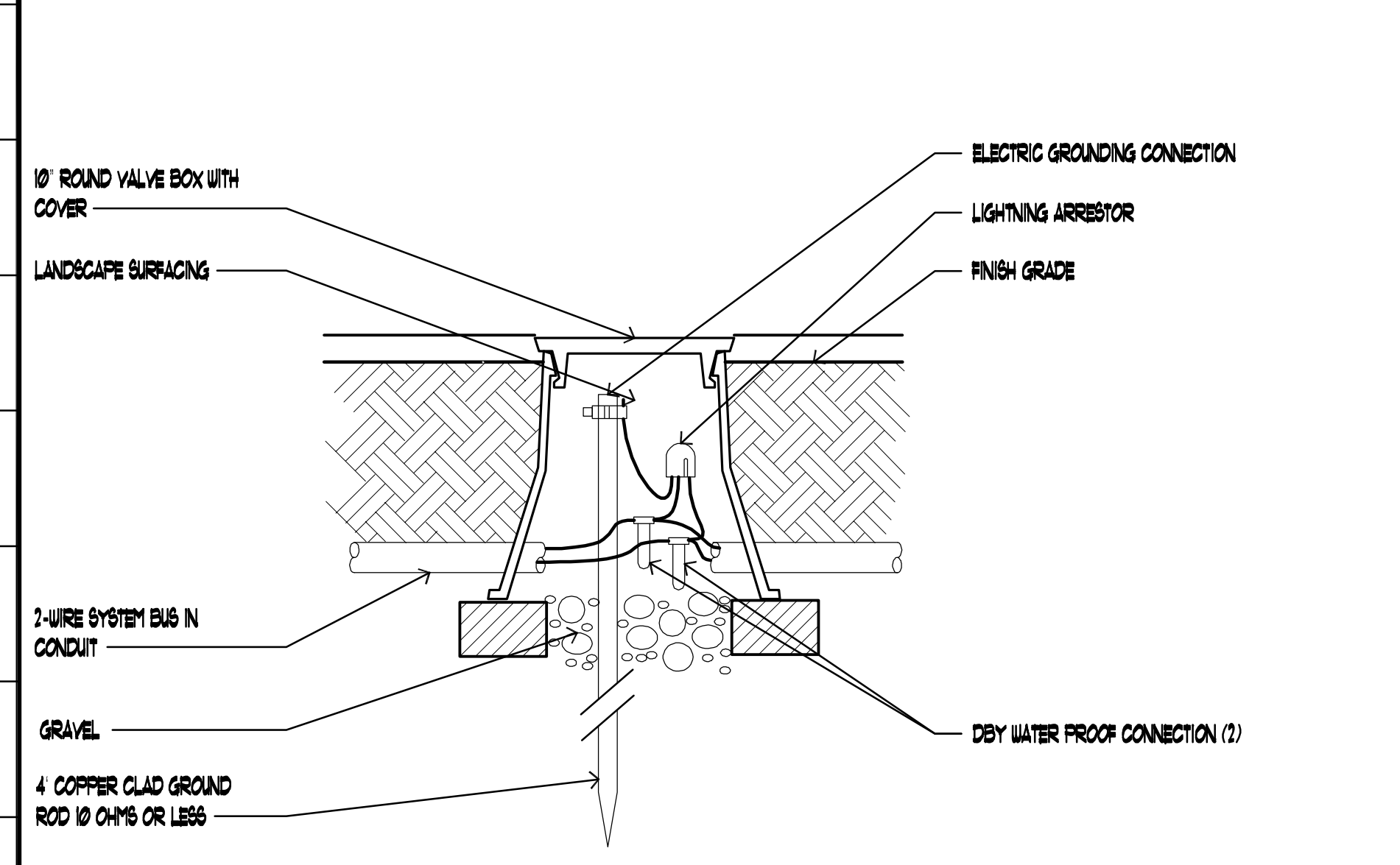
MESA ARIZONA EASTMARK GRANGER 250-45C
THE CHURCH OF JESUS CHRIST OF LATTER-DAY SAINTS
MESA AZ EASTMARK STAKE
10621 E. WILLIAMSFIELD RD., MESA, AZ 85212
OWNER'S PROPERTY NO. 50144272010101



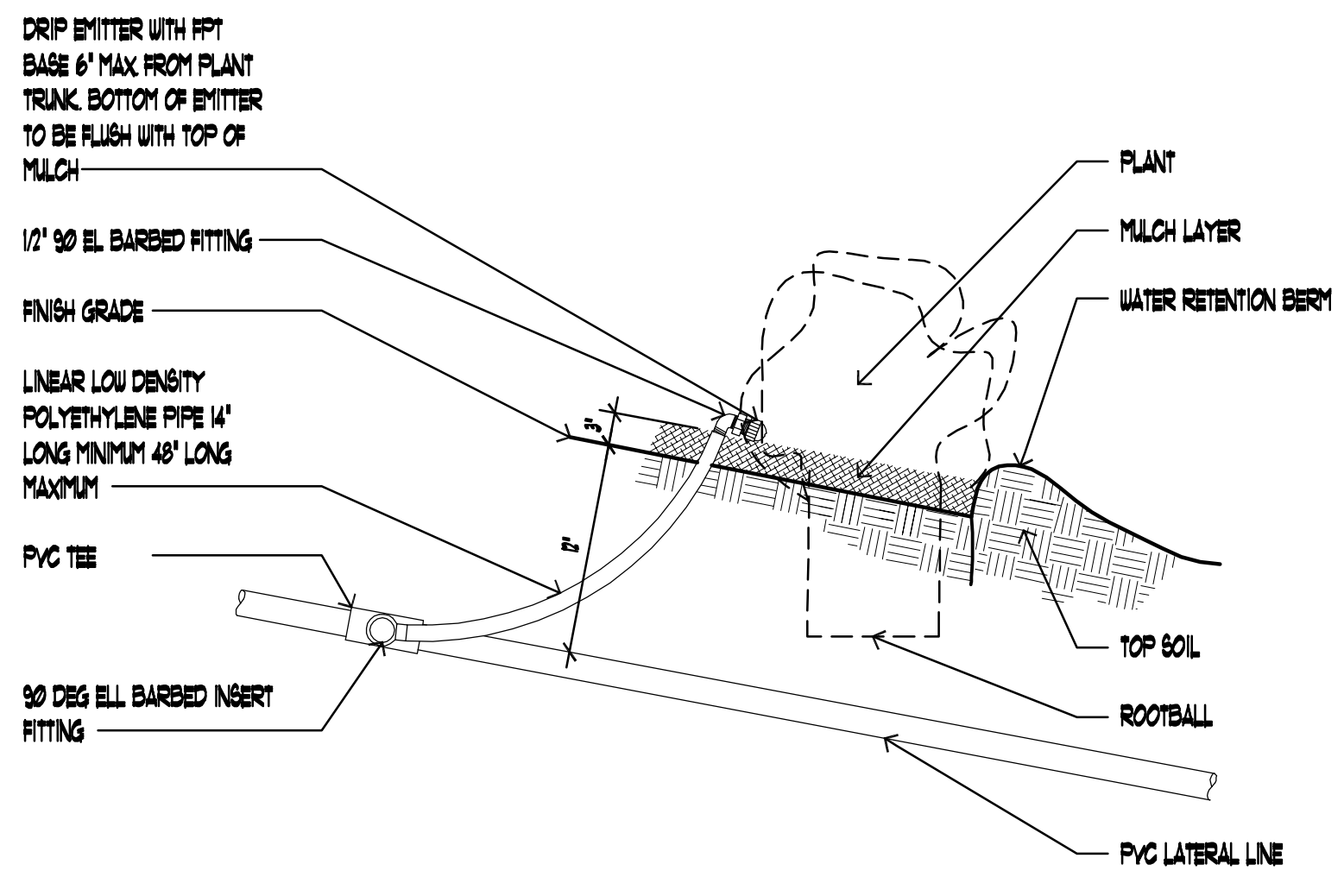
Project Number
2023-29

L-6

COMPANY OF ARCHITECTS OF ARIZONA, A LICENSED PROFESSIONAL CORPORATION, HAS REVIEWED THIS DOCUMENT AND THE REVISIONS THEREON TO THE EXTENT OF SERVICE PROVIDED BY ARCHITECT. ALL WORK SHOWN ON THESE DRAWINGS IS THE PROPERTY OF PHILLIP R. RYAN LANDSCAPE ARCHITECTURE & PLANNING, P.C. ANY REVISIONS TO THESE DRAWINGS SHALL BE MADE BY PHILLIP R. RYAN LANDSCAPE ARCHITECTURE & PLANNING, P.C. ANY REVISIONS TO THESE DRAWINGS SHALL BE MADE BY PHILLIP R. RYAN LANDSCAPE ARCHITECTURE & PLANNING, P.C. ANY REVISIONS TO THESE DRAWINGS SHALL BE MADE BY PHILLIP R. RYAN LANDSCAPE ARCHITECTURE & PLANNING, P.C.

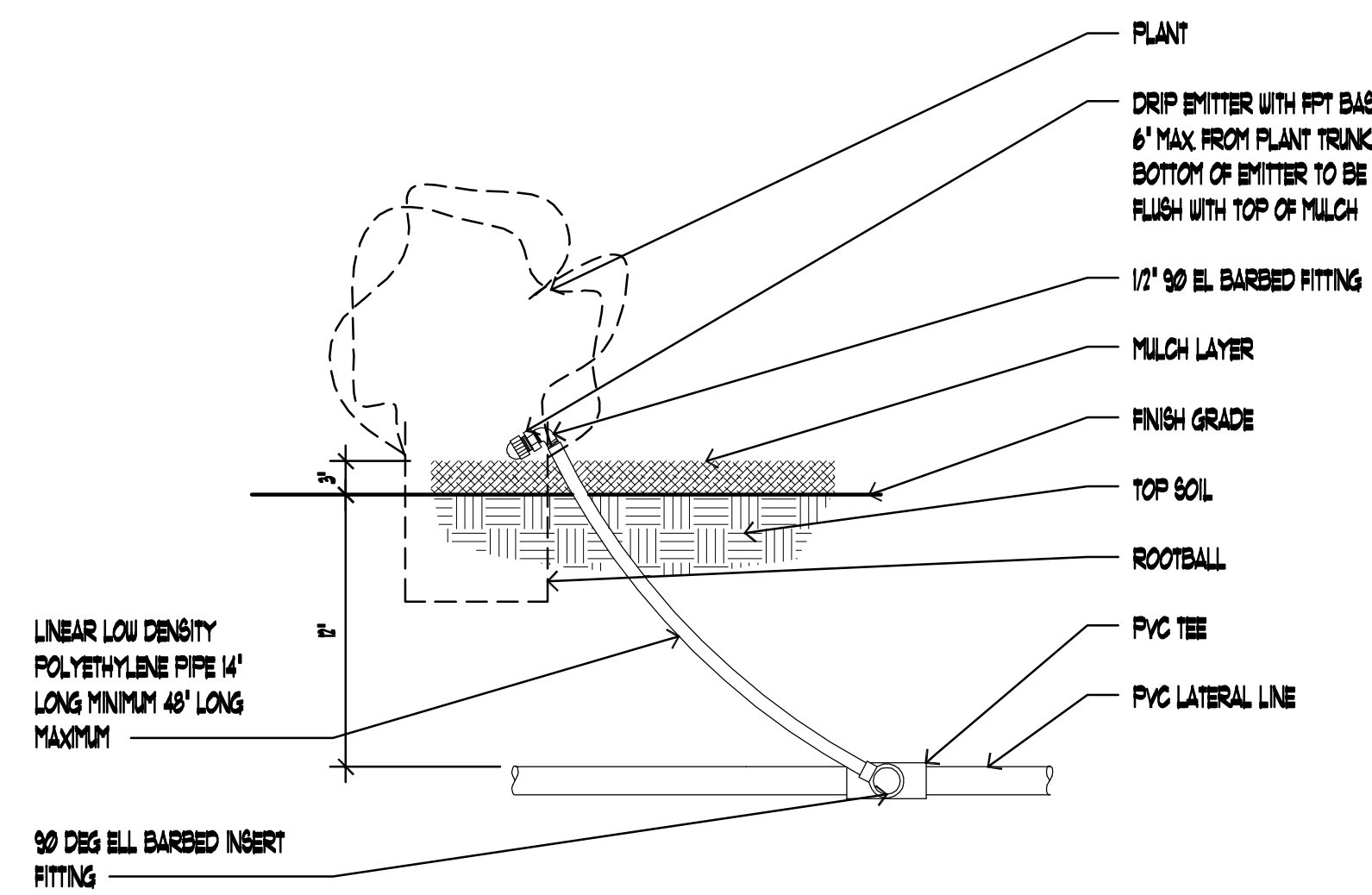


25 LIGHTING ARRESTOR SCALE: N.T.S.



26 DRIP EMITTER SCALE: N.T.S.

NOTE:
ON SLOPES, LOCATE EMITTER ON THE UPHILL SIDE OF PLANT OR TREE



27 DRIP EMITTER SCALE: N.T.S.

NOTE:
LOCATE EMITTER ON BUILDING OR FENCE SIDE OF PLANT

phillip r. ryan
 landscape architect p.c.
 landscape architecture & planning
 4916 s. quiet way
 gilbert, arizona 85298
 (480) 246-9681
 mail@ryanassociatesonline.net

Sketch
 Architecture Company
 2454 East Southern Avenue, Mesa, Arizona 85205, ph: 480.668.8015 fax: 480.668.8022

MESA ARIZONA EASTMARK GRANGER 250-45C
 THE CHURCH OF JESUS CHRIST OF LATTER-DAY SAINTS
 MESA AZ EASTMARK STAKE
 10621 E. WILLIAMSFIELD RD., MESA, AZ 85212
 OWNER'S PROPERTY NO. 50144272010101



Project Number 2023-29

LANDSCAPE & IRRIGATION DETAILS

L-7

EXISTING PLANT INVENTORY

PLANT NO.	PLANT NAME	SIZE	PLANT CONDITION	INTENDED DESIGNATION
01	PROSOPIA CHILENSIS (MESQUITE TREE)	6' CAL. X 12' HT. X 8' SP.	POOR, VANDALIZED	REMOVE
02	PROSOPIA CHILENSIS (MESQUITE TREE)	6' CAL. X 10' HT. X 10' SP.	POOR, VANDALIZED	REMOVE
03	PROSOPIA CHILENSIS (MESQUITE TREE)	6' CAL. X 10' HT. X 10' SP.	POOR, VANDALIZED	REMOVE
04	PROSOPIA CHILENSIS (MESQUITE TREE)	5' CAL. X 8' HT. X 8' SP.	POOR STATURE, LEANING	REMOVE
05	PROSOPIA CHILENSIS (MESQUITE TREE)	8' CAL. X 12' HT. X 8' SP.	POOR, VANDALIZED	REMOVE
06	PROSOPIA CHILENSIS (MESQUITE TREE)	5' CAL. X 10' HT. X 6' SP.	POOR, VANDALIZED	REMOVE
07	PROSOPIA CHILENSIS (MESQUITE TREE)	8' CAL. X 8' HT. X 8' SP.	POOR, DISEASED	REMOVE
08	PROSOPIA CHILENSIS (MESQUITE TREE)	13' CAL. X 14' HT. X 14' SP.	POOR, SPLIT TRUNK, DISEASED	REMOVE
09	PROSOPIA CHILENSIS (MESQUITE TREE)	12' CAL. X 10' HT. X 12' SP.	HEALTHY	TO BE RELOCATED
10	PROSOPIA CHILENSIS (MESQUITE TREE)	4' CAL. X 6' HT. X 6' SP.	POOR UNHEALTHY	REMOVE
11	PROSOPIA CHILENSIS (MESQUITE TREE)	4' CAL. X 7' HT. X 6' SP.	POOR UNHEALTHY	REMOVE
12	PROSOPIA CHILENSIS (MESQUITE TREE)	12' CAL. X 14' HT. X 14' SP.	POOR, STRESSED	REMOVE
13	PROSOPIA CHILENSIS (MESQUITE TREE)	16' CAL. X 15' HT. X 15' SP.	POOR DEAD WOOD, STRESSED	REMOVE
14	PROSOPIA CHILENSIS (MESQUITE TREE)	4' CAL. X 8' HT. X 6' SP.	POOR, DISEASED TRUNK	REMOVE
15	PROSOPIA CHILENSIS (MESQUITE TREE)	30' CAL. X 4' HT. X 8' SP.	POOR, CLUMP	REMOVE
16	PROSOPIA CHILENSIS (MESQUITE TREE)	4' CAL. X 7' HT. X 5' SP.	POOR DYING, STRESSED	REMOVE
17	PROSOPIA CHILENSIS (MESQUITE TREE)	4' CAL. X 8' HT. X 10' SP.	HEALTHY	TO BE RELOCATED
18	PROSOPIA CHILENSIS (MESQUITE TREE)	24' CAL. X 12' HT. X 18' SP.	POOR, DISEASED TRUNK	REMOVE
19	PROSOPIA CHILENSIS (MESQUITE TREE)	4' CAL. X 8' HT. X 8' SP.	POOR, DISEASED TRUNK	REMOVE
20	PROSOPIA CHILENSIS (MESQUITE TREE)	8' CAL. X 10' HT. X 10' SP.	HEALTHY	TO BE RELOCATED
21	PROSOPIA CHILENSIS (MESQUITE TREE)	8' CAL. X 8' HT. X 8' SP.	POOR, DISEASED TRUNK	REMOVE
22	PROSOPIA CHILENSIS (MESQUITE TREE)	5' CAL. X 8' HT. X 14' SP.	POOR DEAD WOOD, STRESSED	REMOVE
23	PROSOPIA CHILENSIS (MESQUITE TREE)	16' CAL. X 10' HT. X 20' SP.	POOR UNHEALTHY, DISEASED	REMOVE
24	PROSOPIA CHILENSIS (MESQUITE TREE)	4' CAL. X 6' HT. X 12' SP.	POOR UNHEALTHY, DISEASED	REMOVE
25	PROSOPIA CHILENSIS (MESQUITE TREE)	8' CAL. X 10' HT. X 12' SP.	HEALTHY	TO BE RELOCATED

phillip r. ryan
 landscape architect p.c.
 landscape architecture & planning
 4916 s. quiet way
 gilbert, arizona 85298
 (480) 246-9681
 mail@ryanassociatesonline.net



MESA ARIZONA EASTMARK GRANGER 250-4SC
 THE CHURCH OF JESUS CHRIST OF LATTER-DAY SAINTS
 MESA AZ EASTMARK STAKE
 10621 E. WILLIAMSFIELD RD., MESA, AZ 85212
 OWNER'S PROPERTY NO. 501442720101



Project Number
2023-29
LANDSCAPE INVENTORY/SALVAGE PLAN
LSI-1

GENERAL INVENTORY/SALVAGE NOTES:

THE GENERAL NOTES ARE THE ONLY NOTES APPROVED ON THIS PLAN. ADDITIONAL GENERAL NOTES GENERATED BY THE SEALANT AND PLACED ON THE PLANS ARE NOT APPROVED AS PART OF THIS PLAN AND ARE NOTED AS SUCH ON THE PLANS.

PLANT MATERIALS MUST BE INDIVIDUALLY TAGGED IN THE FIELD AT THE TIME THE INVENTORY PLANS ARE SUBMITTED. TAGGED MATERIAL MUST BE CLEARLY MARKED WITH WATERPROOF INK AND INCLUDE THE NUMBER WHICH CORRESPONDS TO THE NUMBER SHOWN ON THE PLAN. A FIELD REVIEW WILL NOT OCCUR UNTIL CLEARLY MARKED TAGS ARE IN PLACE ON EACH PLANT TO BE INCLUDED IN THE INVENTORY.

TAGS MUST BE ATTACHED SO THAT THEY WILL REMAIN ON THE PLANT FOR THE DURATION OF THE SALVAGE AND NURSERY STORAGE PERIOD. PLANT MATERIALS WITHOUT NUMBERED TAGS IN THE NURSERY WILL NOT BE COUNTED TOWARD THE TOTAL REQUIREMENT FOR THE PROJECT.

ALL SALVAGEABLE MATERIAL IS TO BE CLEARLY FLAGGED WITH TAPE OR PLASTIC TAGS VISIBLE FROM ALL DIRECTIONS. TAGS SHALL BE NUMBERED TO CORRESPOND WITH THE PLANT INVENTORY PLAN AND LEGEND. COLOR CODE AS FOLLOWS:

- RED - SALVAGE AND RELOCATE
- WHITE - PRESERVE AND PROTECT IN PLACE
- BLUE - DESTROY, NOT SALVAGEABLE AND CANNOT REMAIN IN PLACE

CONTACT THE PARKS & RECREATION DEPARTMENT TO VERIFY OWNERSHIP OF ANY PLANT MATERIAL IN THE PUBLIC ROW. PRIOR TO ANY PLANT RE-LOCATIONS OR REMOVALS. OBTAIN WRITTEN PERMISSION FROM THE PARKS AND RECREATION DEPARTMENT PRIOR TO THE RE-LOCATION OR REMOVAL OF ANY CITY PLANT MATERIAL OR EQUIPMENT.

CONTACT THE STREET TRANSPORTATION DEPARTMENT PRIOR TO THE RE-LOCATION OR REMOVAL OF EXISTING PLANT MATERIAL IN THE A.DOT. ROW THAT IS ON THE CITY'S SIDE OF THE SOUND WALL. OBTAIN WRITTEN PERMISSION FROM THE STREET TRANSPORTATION DEPARTMENT PRIOR TO THE RE-LOCATION OR REMOVAL OF ANY PLANT MATERIAL OR EQUIPMENT.

A SALVAGE PERMIT SHALL BE OBTAINED AND COMPLETED PRIOR TO THE GRADING AND DRAINAGE PERMIT BEING ISSUED. NO CLEARING OR GRUBBING MAY OCCUR PRIOR TO THE PURCHASE OF THE SALVAGE PERMIT, FIELD APPROVAL OF THE CONSTRUCTION FENCE, AND ALL SALVAGED PLANTS PLACED IN THE NURSERY AND FIELD INSPECTED.

ALL PROTECTIVE FENCING SHALL BE IN PLACE BEFORE ANY EARTH MOVING EQUIPMENT IS MOVED ONTO THE SITE AND BEFORE ANY SALVAGE, CLEARING OR GRUBBING TAKES PLACE. SCHEDULE AN INSPECTION OF CONSTRUCTION FENCE.

ALL MATERIAL TO BE SALVAGED SHALL BE REMOVED AND PLACED IN THE DESIGNATED NURSERY AREA BEFORE ANY CLEARING OR GRADING TAKES PLACE. SCHEDULE AN INSPECTION AFTER SALVAGE IS COMPLETED.

ALL TAGGED MATERIALS MUST REMAIN IN NURSERY OR ON-SITE UNTIL NURSERY CHECK IS APPROVED.

NO NAILS, WIRES OR OTHER OBJECTS THAT DAMAGE THE CAMBIUM OR CAUSE INJURY TO THE TREE MAY BE USED DURING THE SALVAGE PROCESS. ALL EFFORTS SHALL BE TAKEN BY USING PADDING OR OTHER METHODS TO PRESERVE THE INTEGRITY OF THE BARK.

TREES AND PROTECTED PLANT MATERIAL OR MATERIAL NOTED FOR SALVAGE THAT ARE DESTROYED OR DIE DURING THE SALVAGE, RELOCATION, OR MAINTENANCE PERIOD WILL BE REPLACED WITH A PLANT OF EQUAL OR GREATER SIZE AND TYPE BY THE RESPONSIBLE PARTY A MINIMUM OF 90 DAYS BEFORE THE COMPLETION OF THE PROJECT. NO CERTIFICATES OF OCCUPANCY WILL BE ISSUED BEFORE ALL REQUIRED MATERIAL HAS BEEN REPLACED. ALL REPLACEMENT MATERIAL SHALL BE APPROVED BY THE PLANNING & DEVELOPMENT LANDSCAPE ARCHITECT. A MAXIMUM OF 10% OF THE SALVAGEABLE PLANT MATERIAL WILL NOT BE REQUIRED TO BE REPLACED IF LOST.

ALL REQUIREMENTS OF THE STATE OF ARIZONA, INCLUDING THE 'NOTICE OF INTENT TO CLEAR LAND,' SHALL BE MET NOTWITHSTANDING ANY APPROVALS BY THE CITY OF SCOTTSDALE.

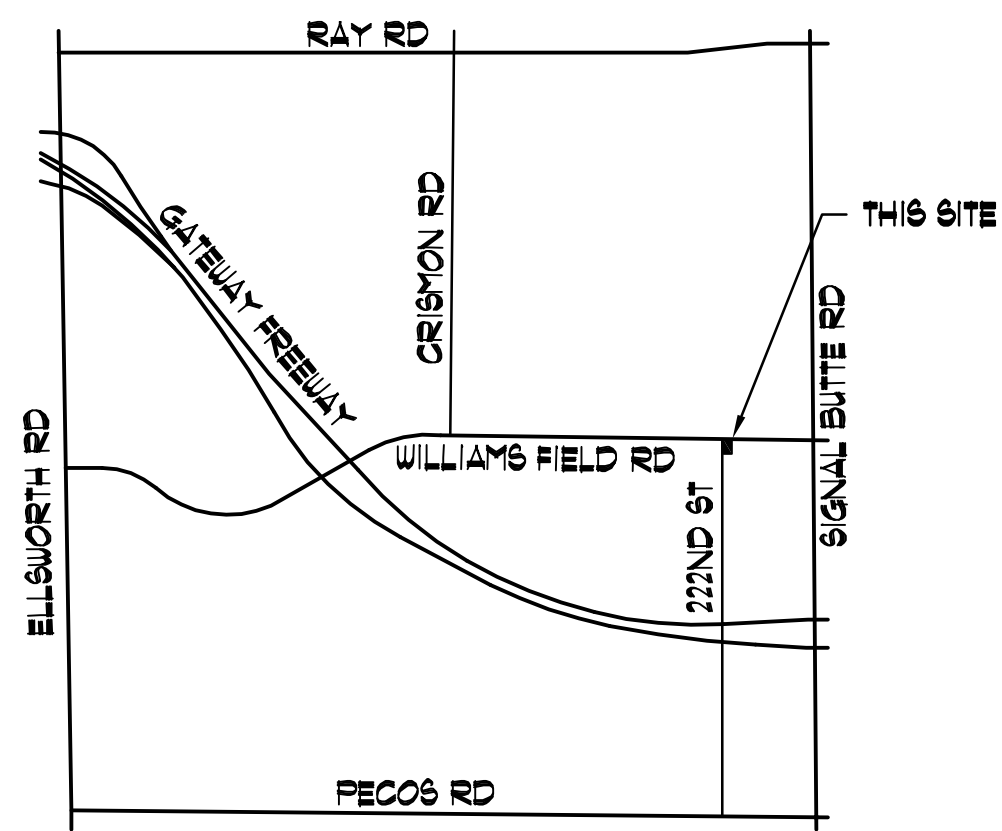
FILE NOTICE OF INTENT (NOI) TO CLEAR LAND WITH THE STATE OF ARIZONA, 602-542-6408. PROVIDE A COPY OF THE NOI PERMIT TO THE INSPECTOR. [HTTP://WWW.AZD.GOV/ESD/CLEARLAND.PDF](http://www.azd.gov/esd/clearland.pdf)

PROVIDE A COPY OF THE COUNTY DUST CONTROL PERMIT TO THE INSPECTOR.

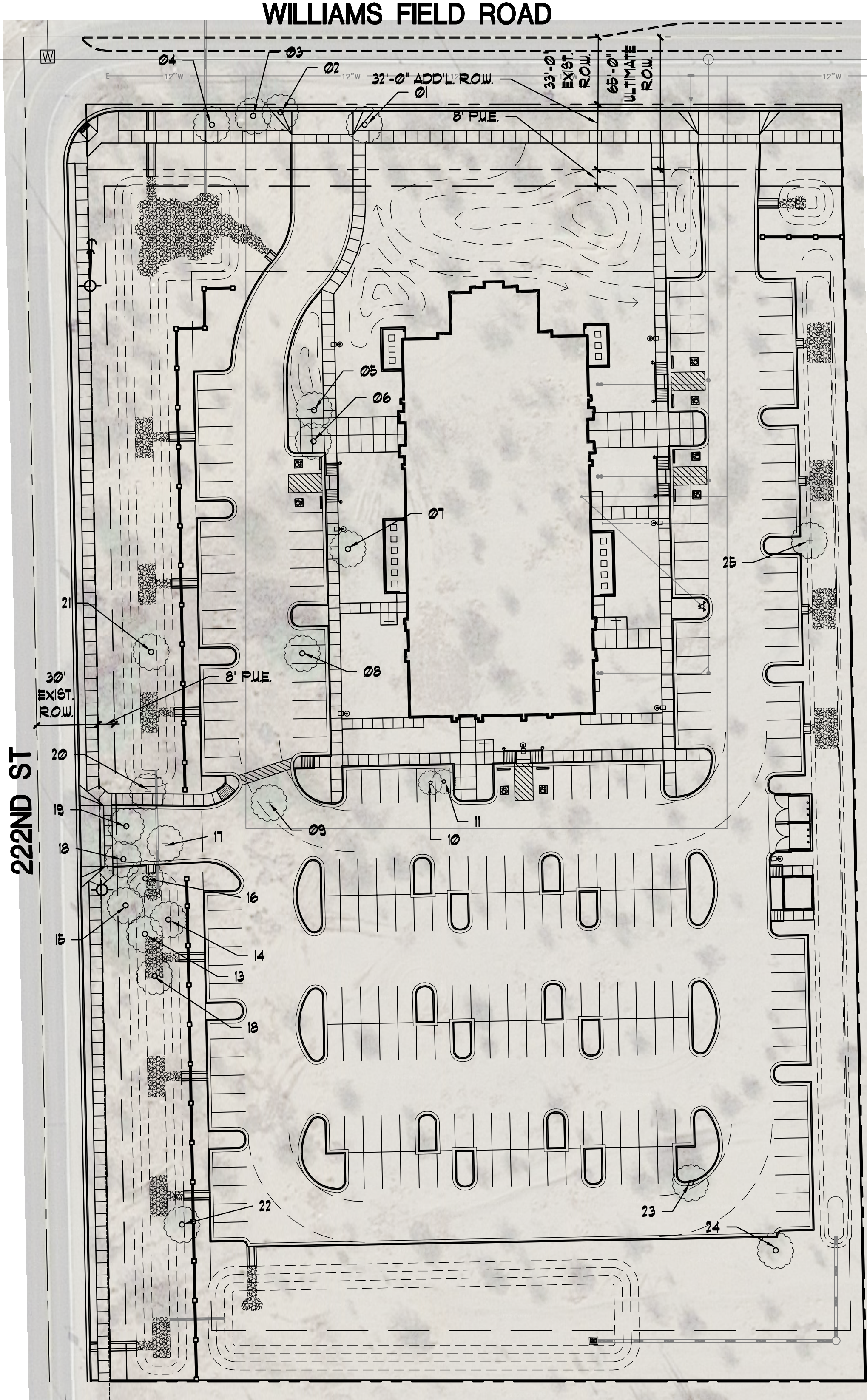
NO SALVAGE MATERIAL SHALL BE REMOVED FROM THE SITE WITHOUT PLANNING & DEVELOPMENT LANDSCAPE ARCHITECT APPROVAL.

KNOWINGLY OR NEGLIGENTLY PROVIDING FALSE OR MISLEADING INFORMATION TO THE CITY OF SCOTTSDALE REGARDING SALVAGEABLE MATERIALS MAY RESULT IN DELAYS AND/OR SUSPENSION OF PERMITS AND INSPECTIONS.

PLAN APPROVAL IS VALID FOR 180 DAYS. PRIOR TO PLAN APPROVAL EXPIRATION, ALL ASSOCIATED PERMITS SHALL BE PURCHASED OR THE PLANS SHALL BE RESUBMITTED FOR EXTENSION OF PLAN APPROVAL. THE EXPIRATION, EXTENSION, AND REINSTATEMENT OF INVENTORY/SALVAGE COMBINATION PLANS AND PERMITS SHALL FOLLOW THE SAME GUIDELINES AS THOSE INDICATED IN THE SCOTTSDALE BUILDING CONSTRUCTION CODE FOR BUILDING PERMITS.



Vicinity Map



NOTE: ALL EXISTING SHRUBS TO BE REMOVED

PLANT SCHEDULE:

- EXISTING TREE TO BE RELOCATED 4 TOTAL
- EXISTING TREE TO BE REMOVED 21 TOTAL

**Landscape Inventory/
Salvage Plan**
 Scale 1:40
 GRAPHIC SCALE
 NORTH