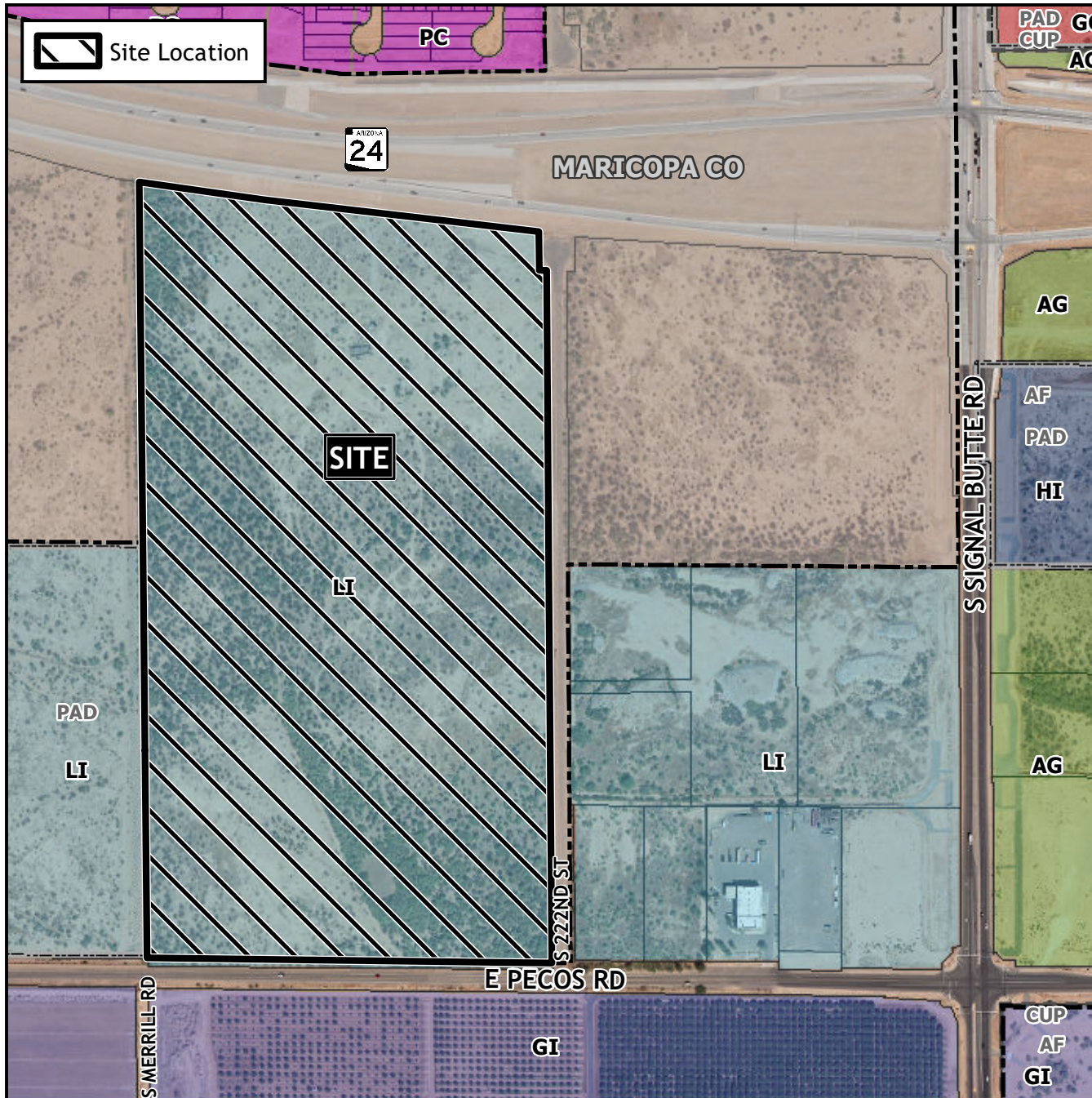


Design Review Vicinity Map: DRB24-00018

Case Details



Case:
DRB24-00018

Site / Address:
(District 6). Within the 10400 to 10600 blocks of East Pecos Road (north side) and within the 6000 to 7000 blocks of South 222nd Street (west side). Located east of Signal Butte Road on the north side of Pecos Road (71± acres).

Request:
Design Review for an industrial development.

