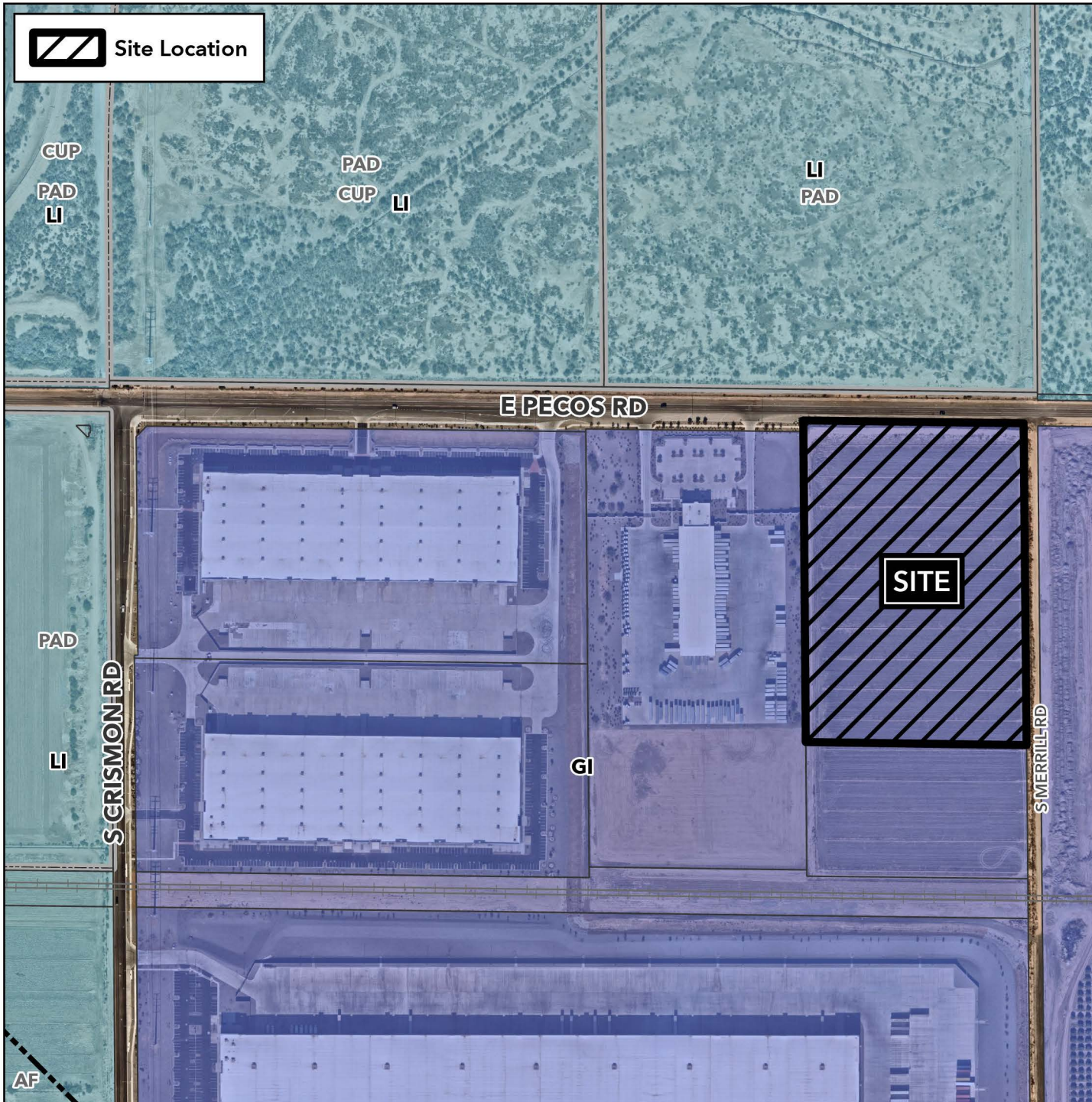


# Planning and Zoning Vicinity Map: ZON24-00548

## Case Details

 Site Location



### Case:

ZON24-00548

### Site / Address:

(District 6). 13± acres located approximately 2,600 feet west of the southwest corner of East Pecos Road and South Signal Butte Road.

### Request:

Site Plan Review for the development of an approximately 49,747± square foot freight/truck terminal and warehouse.

