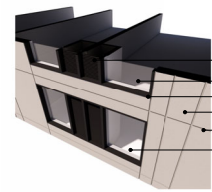




SOUTH ELEVATION
SCALE: 1/8" = 1'-0"



WEST ELEVATION
SCALE: 1/8" = 1'-0"



HVAC UNIT LOUVER SYSTEM
SCALE: 1/2" = 1'-0"

- BASIS OF DESIGN**
- POWDER COATED FFS ARCHITECTURAL, CHARCOAL - SRSL7407
 - VIRACONAL VINC-402
 - POWDER COATED FFS ARCHITECTURAL, CHARCOAL - SRSL7407
 - SMOOTH FINISH LIGHT (EIFS-5)
 - SMOOTH FINISH LIGHT (EIFS-5)
 - POWDER COATED KAWNEER PERAWADAT, CHARCOAL

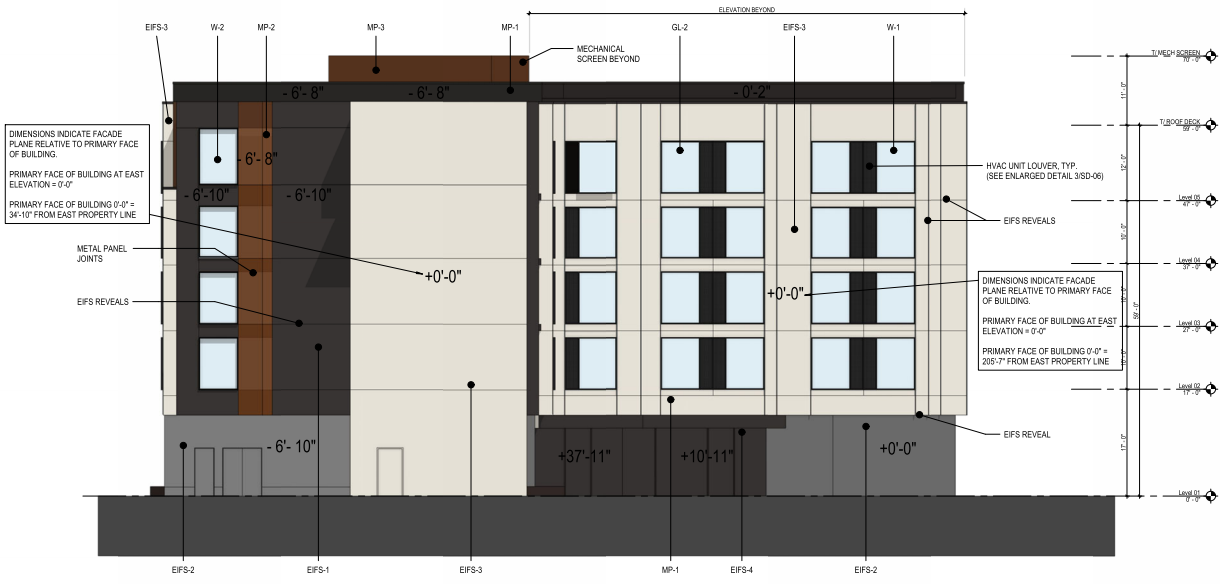
- EXTERIOR MATERIAL LEGEND**
- (SEE SHEET SD-10 FOR EXTERIOR MATERIAL BOARD)
- MP-1 METAL PANEL SYSTEM
 - MP-2 PERFORATED METAL PANEL ACCENT
 - MP-3 PERFORATED METAL FOR ROOF MECH. SCREEN
 - MP-4 PERFORATED METAL SCREEN
 - W-1 ALUMINUM WINDOW WITH INTEGRAL HVAC ALUMINUM LOUVER
 - W-2 ALUMINUM WINDOW
 - SF-1 ALUMINUM STOREFRONT
 - GL-1 CLEAR INSULATED GLAZING (AT GROUND FLOOR PUBLIC AREAS)
 - GL-2 TINTED INSULATED GLAZING (AT TYP. FLOORS 02-05)
 - EIFS-1 EXTERIOR INSULATED FINISH SYSTEM, SMOOTH FINISH, DARK
 - EIFS-2 EXTERIOR INSULATED FINISH SYSTEM, SMOOTH FINISH, MEDIUM
 - EIFS-3 EXTERIOR INSULATED FINISH SYSTEM, SMOOTH FINISH, LIGHT
 - EIFS-4 EXTERIOR INSULATED FINISH SYSTEM, BLENDED COLORS

- NOTE**
- ALL RAIN LEADERS TO BE INTERNALIZED
 - SEE SHEETS SD-08 AND SD-09 FOR CONCEPT EXTERIOR RENDERINGS.
 - SEE SHEET SD-10 FOR EXTERIOR MATERIAL BOARD

DIMENSIONS INDICATE FACADE PLANE RELATIVE TO PRIMARY FACE OF BUILDING.
 PRIMARY FACE OF BUILDING AT NORTH ELEVATION = 0'-0"
 PRIMARY FACE OF BUILDING 0'-0" = 79'-3" FROM NORTH PROPERTY LINE



NORTH ELEVATION
 SCALE: 1/8" = 1'-0"



EAST ELEVATION
 SCALE: 1/8" = 1'-0"

EXTERIOR MATERIAL LEGEND

- (SEE SHEET SD-10 FOR EXTERIOR MATERIAL BOARD)
- MP-1 METAL PANEL SYSTEM
 - MP-2 FORMED METAL PANEL ACCENT
 - MP-3 PERFORATED METAL FOR ROOF MECH. SCREEN
 - MP-4 PERFORATED METAL SCREEN
 - W-1 ALUMINUM WINDOW WITH INTEGRAL VITAC ALUMINUM LOUVER
 - W-2 ALUMINUM WINDOW
 - SF-1 ALUMINUM STOREFRONT
 - GL-1 CLEAR INSULATED GLAZING (AT GROUND FLOOR PUBLIC AREAS)
 - GL-2 TINTED INSULATED GLAZING (AT TYP. FLOORS (2-05))
 - EIFS-1 EXTERIOR INSULATED FINISH SYSTEM, SMOOTH FINISH, DARK
 - EIFS-2 EXTERIOR INSULATED FINISH SYSTEM, SMOOTH FINISH, MEDIUM
 - EIFS-3 EXTERIOR INSULATED FINISH SYSTEM, SMOOTH FINISH, LIGHT
 - EIFS-4 EXTERIOR INSULATED FINISH SYSTEM, BLENDED COLORS

NOTE

1. ALL RAIN LEADERS TO BE INTERNALIZED
2. SEE SHEETS SD-09 AND SD-10 FOR CONCEPT EXTERIOR RENDERINGS
3. SEE SHEET SD-10 FOR EXTERIOR MATERIALS BOARD



01 NORTH-WEST



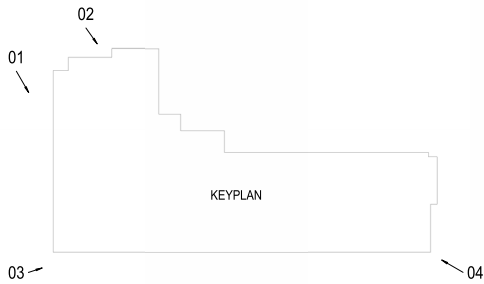
03 SOUTH-WEST



02 NORTH-WEST

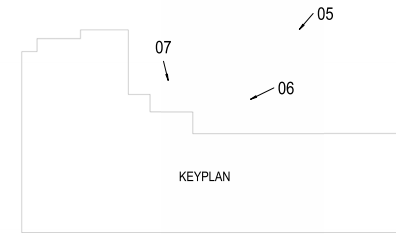


04 SOUTH-EAST





05 AERIAL VIEW INNER NORTH-EAST

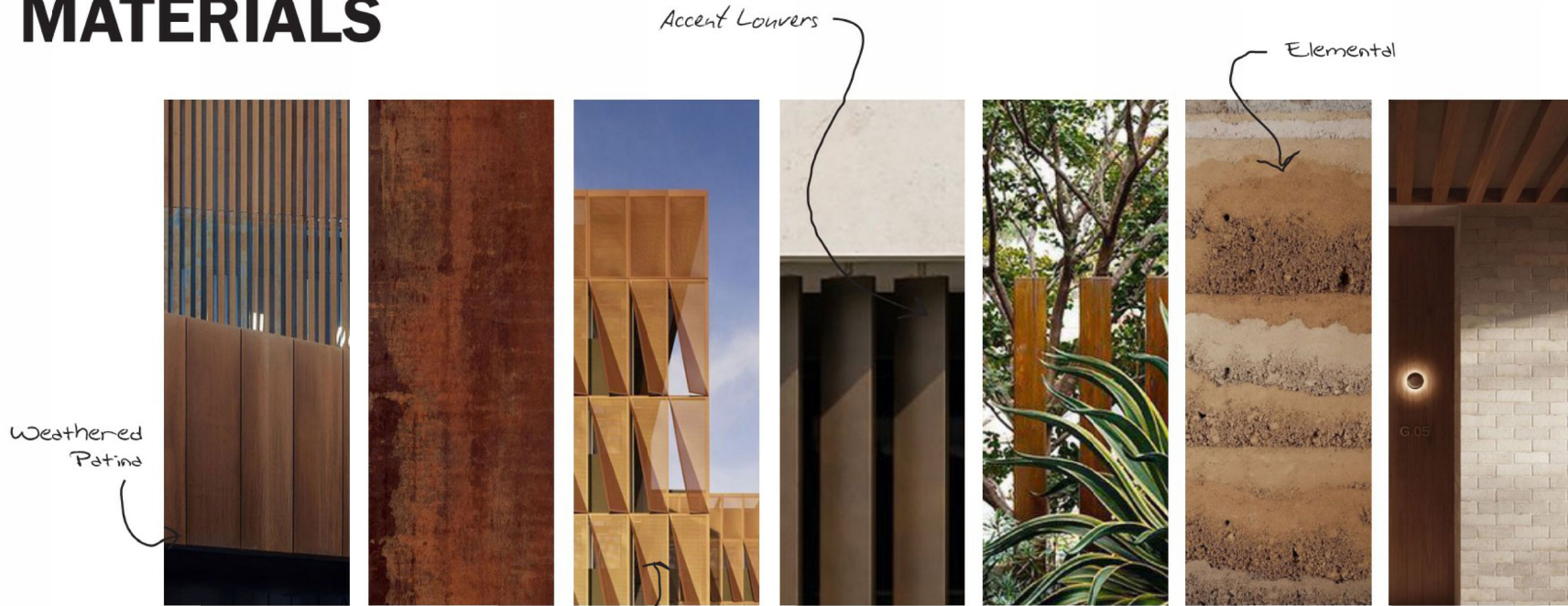


06 INNER NORTH-EAST



07 INNER NORTH-EAST AT POOL

PROPOSED MATERIALS

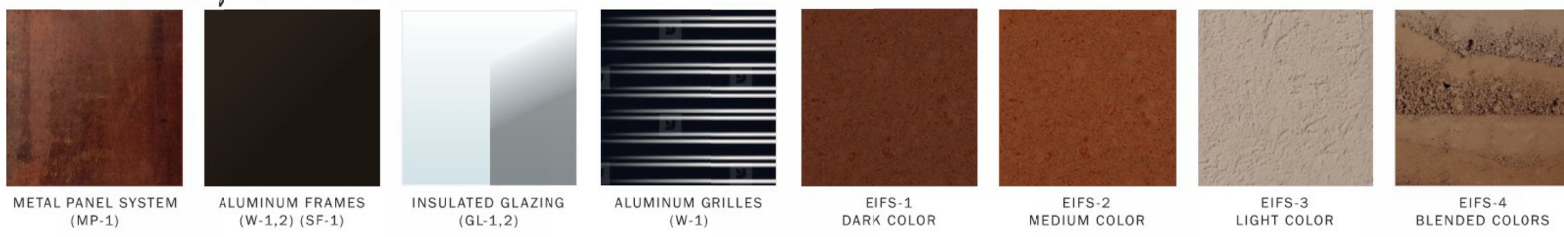


Weathered Patina

Accent Louvers

Elemental

Formed Plaster Panels to Add Depth and Shadow



METAL PANEL SYSTEM (MP-1) ALUMINUM FRAMES (W-1,2) (SF-1) INSULATED GLAZING (GL-1,2) ALUMINUM GRILLES (W-1) EIFS-1 DARK COLOR EIFS-2 MEDIUM COLOR EIFS-3 LIGHT COLOR EIFS-4 BLENDED COLORS

Exterior Material Board

Informed by the brand, inspired by the storytelling.
 (SEE SHEET SD-06 AND SD-07 FOR EXTERIOR ELEVATIONS AND PROPOSED MATERIAL LOCATIONS)