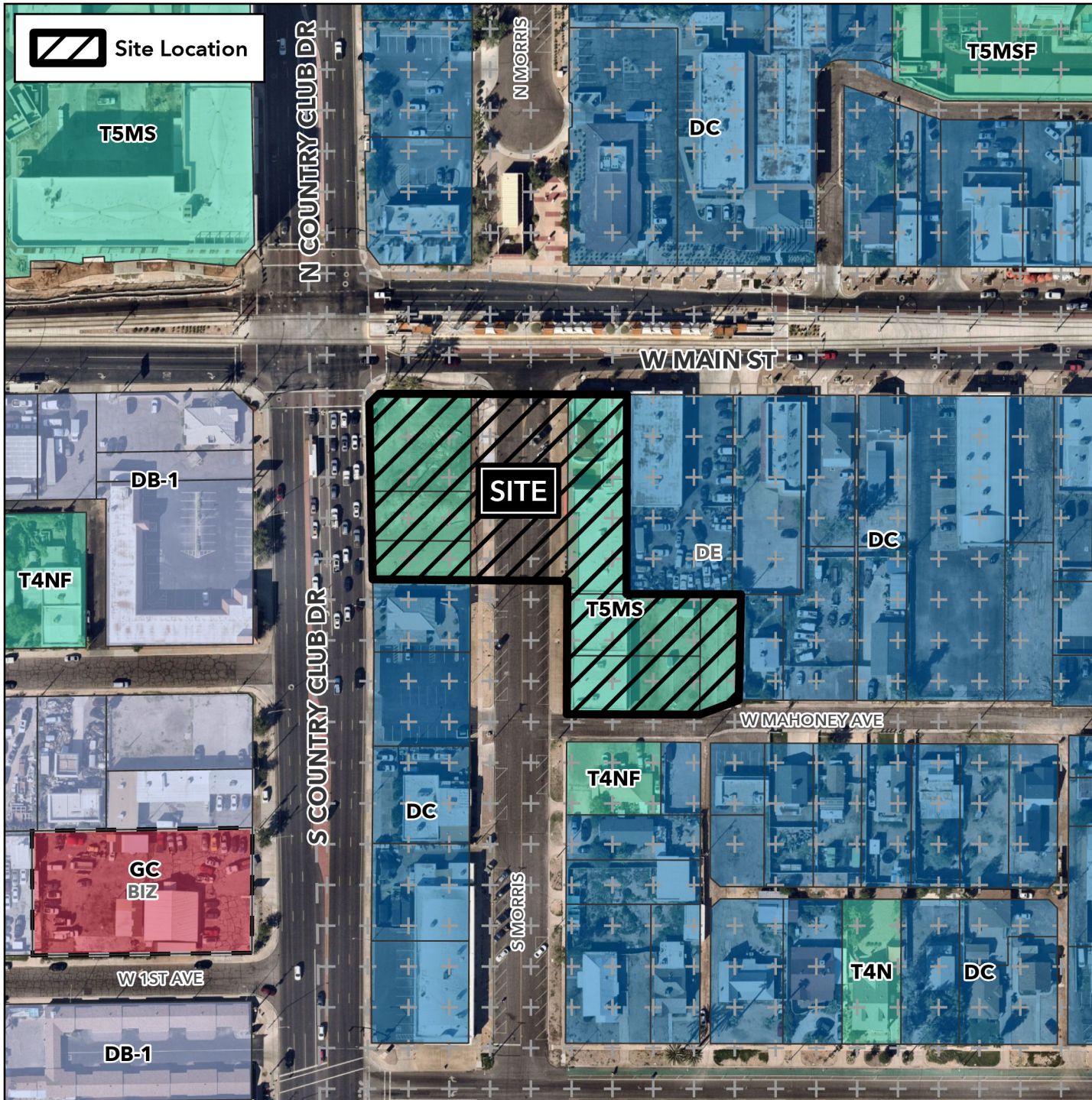


Board of Adjustment Vicinity Map: BOA25-00840

Case Details



Site Location



Case:

BOA25-00840

Site / Address:

1.7± acres located at the southeast corner of South Country Club Drive and West Main Street, the southeast corner of South Morris and West Main Street and the northeast corner of South Morris and West Mahoney Avenue. (District 4)

Request:

Requesting an extension to approved Variances in the Transect 5 Main Street (T5MS) District.

