



# Design Review Board



# DRB24-00483

## Fire Station 223

Josh Grandlienard, Senior Planner

July 9, 2024



# Request

- Design Review
- To allow for a new Fire Station

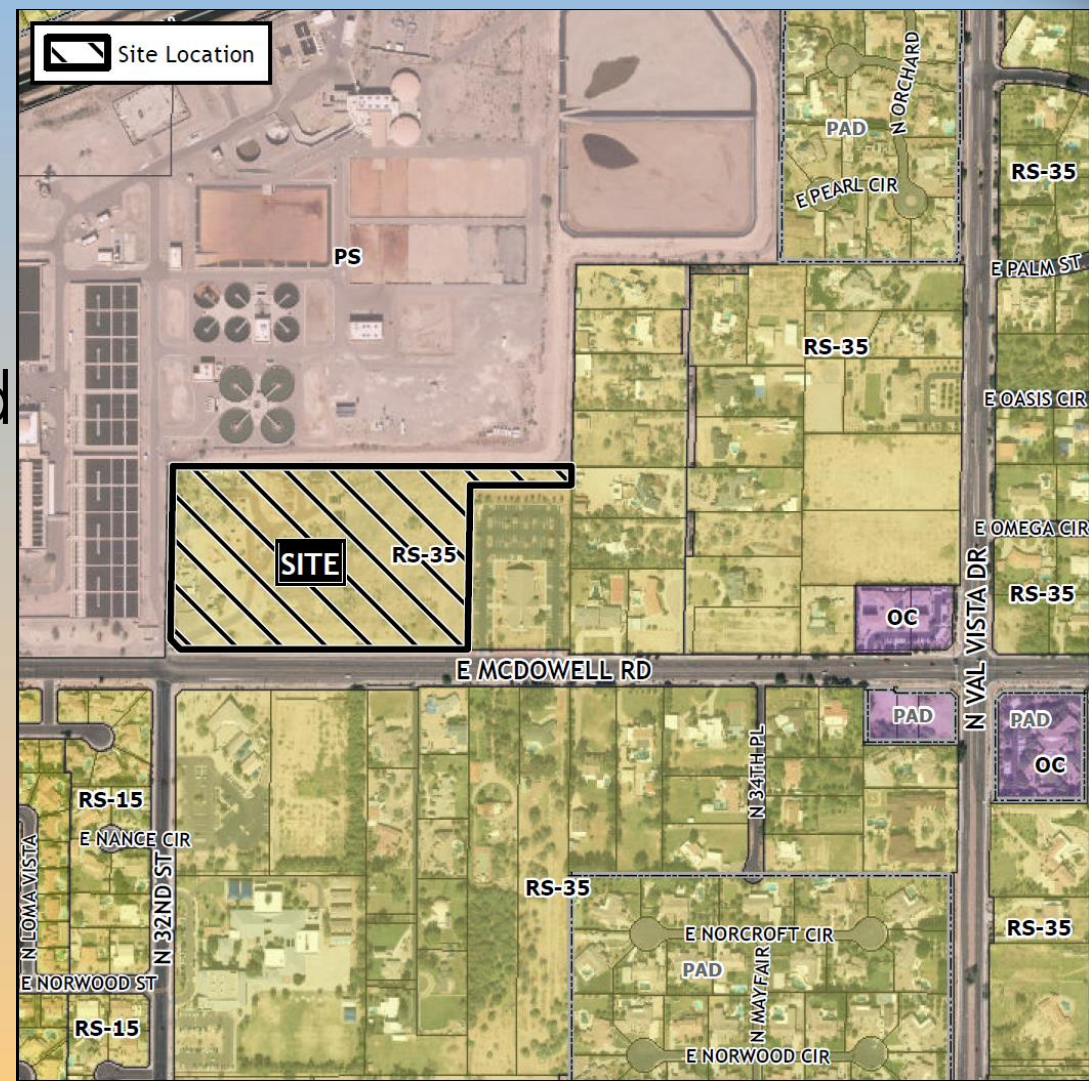






# Location

- West of Val Vista Road
- North of McDowell Road







# Site Photo



Looking north from McDowell Road



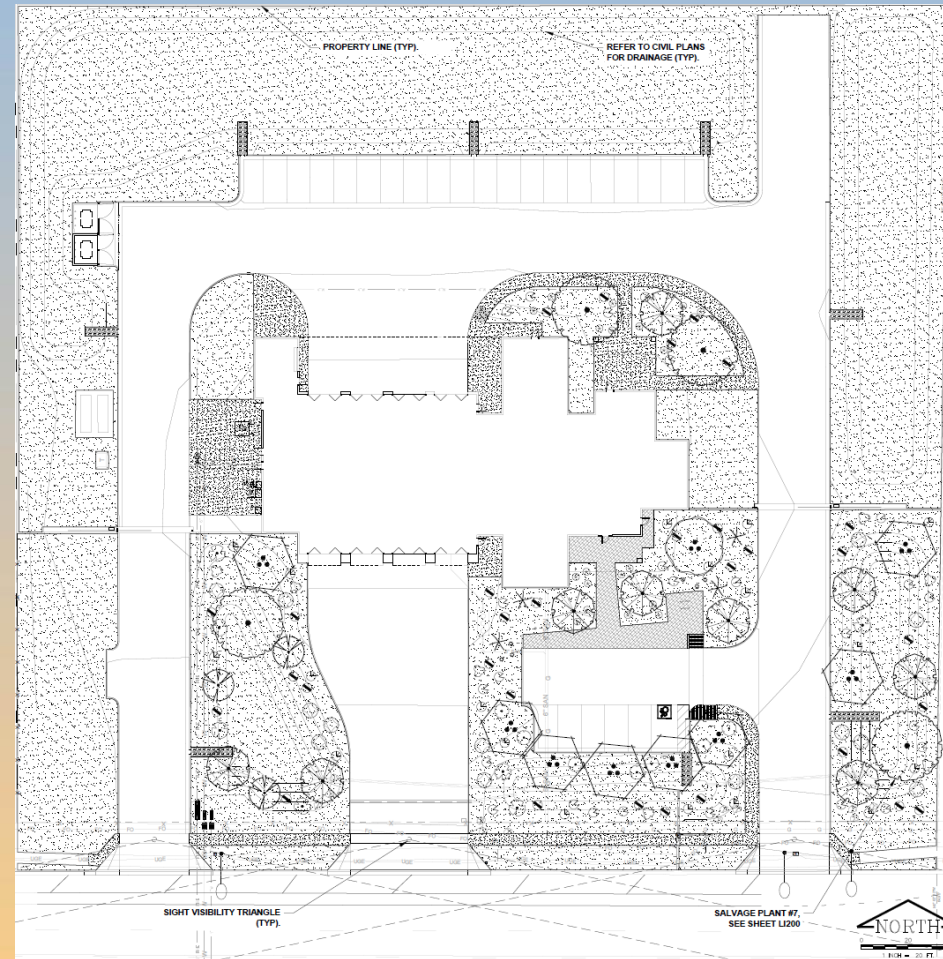




# Landscape Plan

## LANDSCAPE SCHEDULE

SYMBOL	BOTANICAL NAME	COMMON NAME	CONT.	GAL.	QTY.
<b>TREES</b>					
	CAESALPINIA CACALACO 'SMOOTHIE'™ TM	SMOOTHIE CASCALOTE	24" BOX		4
	CERCIDIUM MICROPHYLLUM	LITTLE LEAF PALO VERDE	B & B		4
	CHILOPSIS LINEARIS	DESERT WILLOW	24" BOX		10
	OLNEYA TESOTA	IRONWOOD	24" BOX	MULTI-TRUNK	2
	PROSOPIS VELUTINA	VELVET MESQUITE	24" BOX	MULTI-TRUNK	9
<b>SHRUBS</b>					
	AMBROSIA DELTOIDEA	TRIANGLELEAF BURSAGE	1 GAL		1
	ENCELIA FARINOSA	BRITTLEBUSH	1 GAL		32
	ERICAMERIA LARICIFOLIA	TURPENTINE BUSH	5 GAL		20
	LARREA TRIDENTATA	CREOSOTE BUSH	5 GAL		14
	LEUCOPHYLLUM FRUTESCENS	TEXAS RANGER	5 GAL		8
	SIMMONDSIA CHINENSIS	JOJOBA	5 GAL		8
	SPHAERALCEA AMBIGUA	GLOBEMALLOW	5 GAL		28
<b>ACCENTS</b>					
	FEROCACTUS CYLINDRACEUS	COMPASS BARREL	5 GAL		7
	FOUQUIERIA SPLENDENS	OCOTILLO	15 GAL		5
	HESPERALOE PARVIFLORA 'BRAKELIGHTS'™ TM	BRAKELIGHTS RED HESPERALOE	3 GAL		20
	OPUNTIA SANTA-RITA	PURPLE PRICKLY PEAR	5 GAL		8
<b>GROUNDCOVERS</b>					
	GLANDULARIA GOODDINGII	GOODDING'S VERBENA	1 GAL		1
<b>INSERT MATERIALS</b>					
	DG	DECOMPOSED GRANITE			74,564 SF.
	BOULDER	SURFACE SELECT BOULDER PER DETAIL X LS300			12 EA.





# Building Elevations



① EXTERIOR ELEVATION - NORTH  
1" = 10'-0"

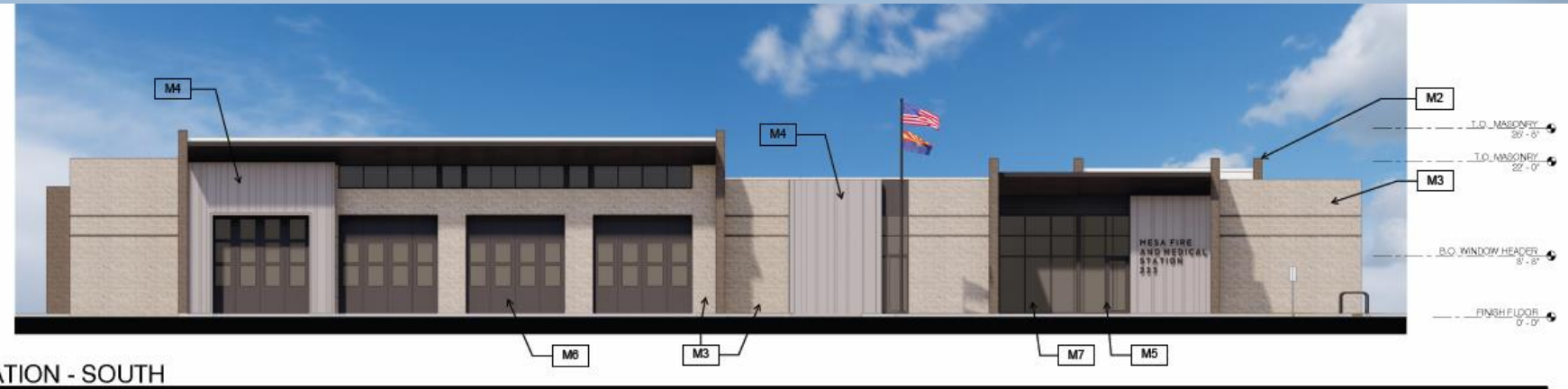


② EXTERIOR ELEVATION - EAST  
1" = 10'-0"





# Building Elevations



3 EXTERIOR ELEVATION - SOUTH  
1" = 10'-0"



4 EXTERIOR ELEVATION - WEST  
1" = 10'-0"



# Site Rendering







# Site Rendering





# Site Rendering







# Site Rendering





# Colors and Materials

**Material Legend**

1	M1	METAL ROOFING MANF. ATAS COLOR: 29 CHAR BROWN
2	M2	CONCRETE MASONRY UNIT - TRENDSTONE MANF. SUPERLITE COLOR: BLACK MOUNTAIN
3	M3	CONCRETE MASONRY UNIT - MESASTONE MANF. SUPERLITE COLOR: PEARL WHITE
4	M4	METAL CLADDING MANF. ATAS COLOR: ST ANCHOR GREY
5	M5	DOOR WINDOW FRAME MANF. TED COLOR: TO MATCH 29 CHAR BROWN
6	M6	APPARATUS BAY DOORS MANF. TIGER DRYLAC POWDER COATINGS COLOR: TO MATCH 29 CHAR BROWN
7	M7	GLAZING MANF. PRG COLOR: SOLARBAN 70 SOLARGRAY

M1 M2 M3 M4

M5 M6 M7

FS  
223





# Alternative Compliance

- ✓ Materials. Facades shall incorporate at least 3 different materials
- ✓ Materials. No more than 50% of the façade may be covered with one single material



# Findings

Staff is seeking your review and recommendation on the following:

- ✓ Proposed building elevations and landscape design
- ✓ Alternative Compliance for building materials

***Staff welcomes any feedback***





# Design Review Board