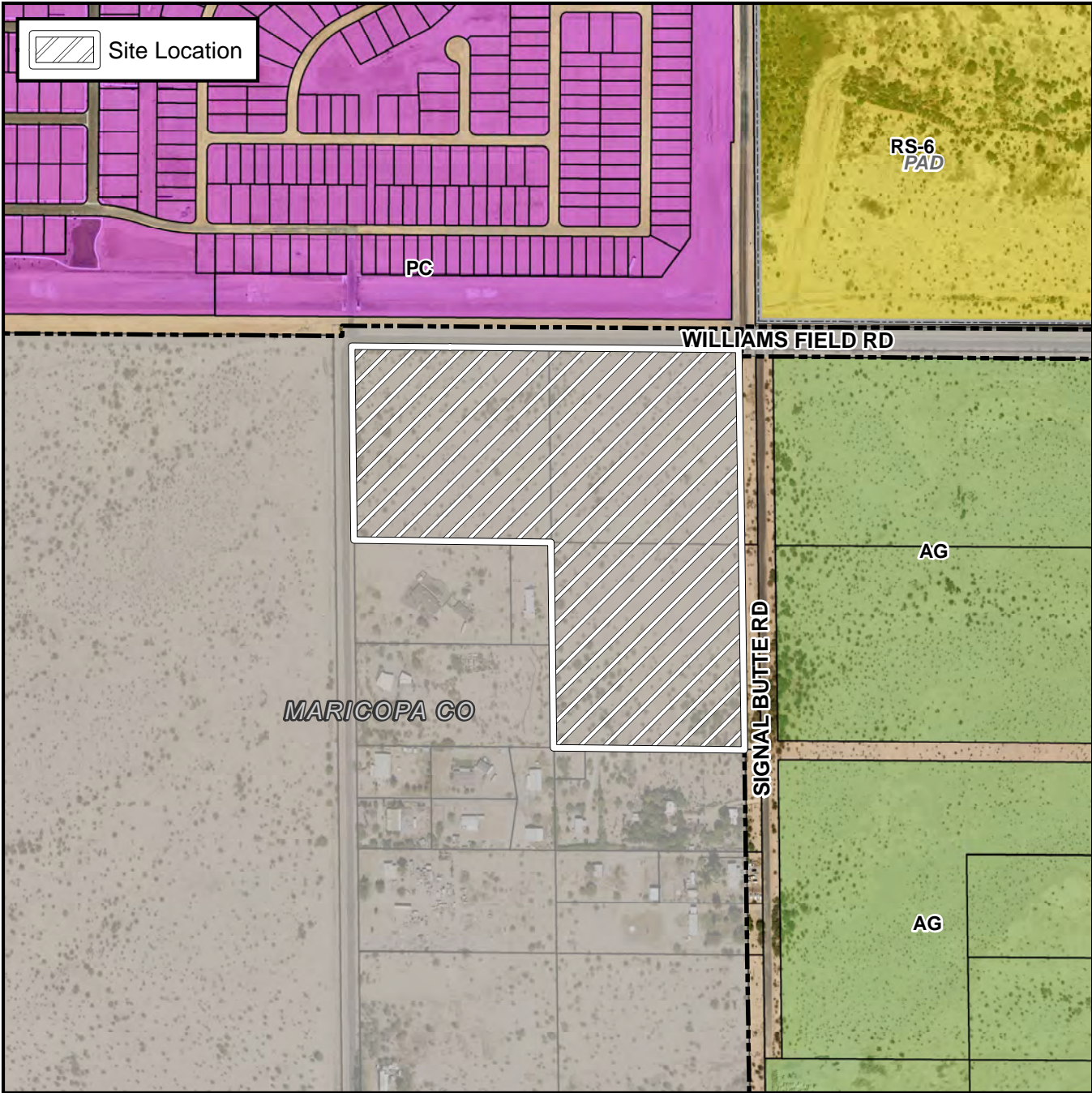


# Planning and Zoning Vicinity Map: ZON18-00143

# Case Details



**CASE:** ZON18-00143      **PRE-PLAT :**

**SITE / ADDRESS:**  
The 10600 through 10800 blocks of East Williams Field (south side) and the 6000 through 6200 blocks of South Signal Butte Road (west side). Located south of Williams Field Road and west of Signal Butte Road (27.12± acres) - District 6

**REQUEST:**  
Rezone from Maricopa County RU-43 to City of Mesa AG. This request will establish city zoning on recently annexed property.

